

O.D.O.T. DISTRICT 2 SURVEY OFFICE (USE ONLY)

PERSONNEL

REFERENCE NO. 7 B

SHEET 12 OF 56

NOTES RHOADES

DATE 10/31/23

ROUTE SR 4

H.C. AUBLE

WEATHER CLOUDY

COUNTY SENECA

R.C. ASTON

TEMP. 40°

TOWNSHIP VENICE

NIESE

SECTION 15

DWG BY RHOADES

PID 101241

T 1 N R 17 E

TYPE MONUMENT D.N.F. P.K./SHINNER

ON SURFACE - ~~BELOW~~ ON

OFFSET C PAVEMENT 0.5' LT : ~~RT~~

9.3' TO LT EDGE PAVEMENT

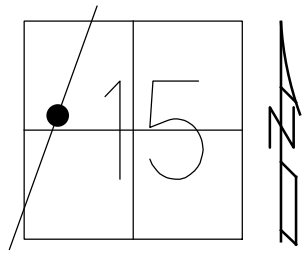
STATION: 191+05.35

HORZ.DATUM: _____

GEOID: _____

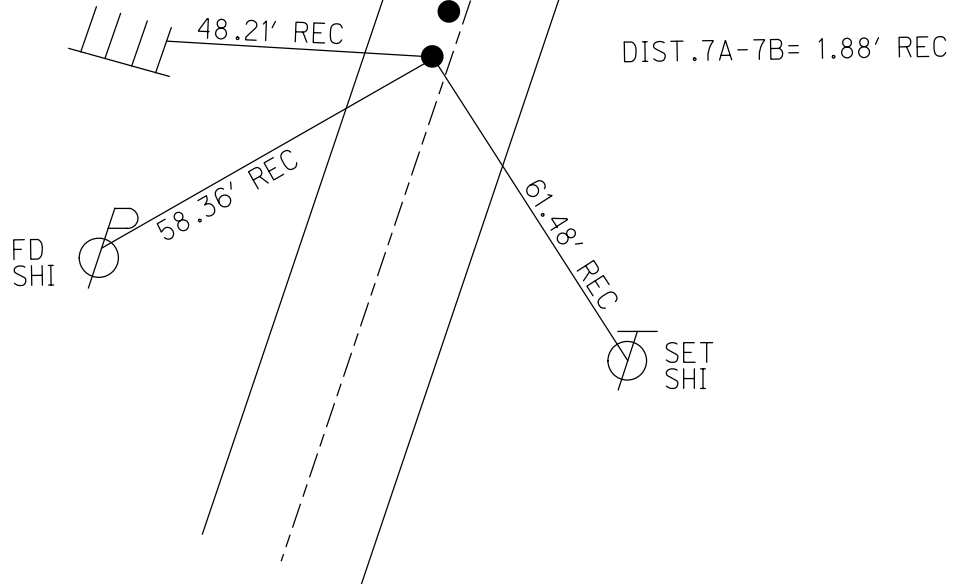
GRID: NORTHING: _____

EASTING: _____



RECORD:
 FD P.K./SHINNER
 12/20/1974
 D.N.F.
 7/26/1993
 9/3/09, KPM
 8/11/10, JMH
 9/14/21, DSA
 2/8/22, JFO
 7/13/23, JMR
 10/31/23, DSA

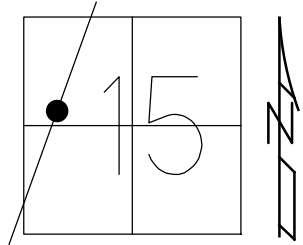
1ST ANGLE IRON
 BILLBOARD



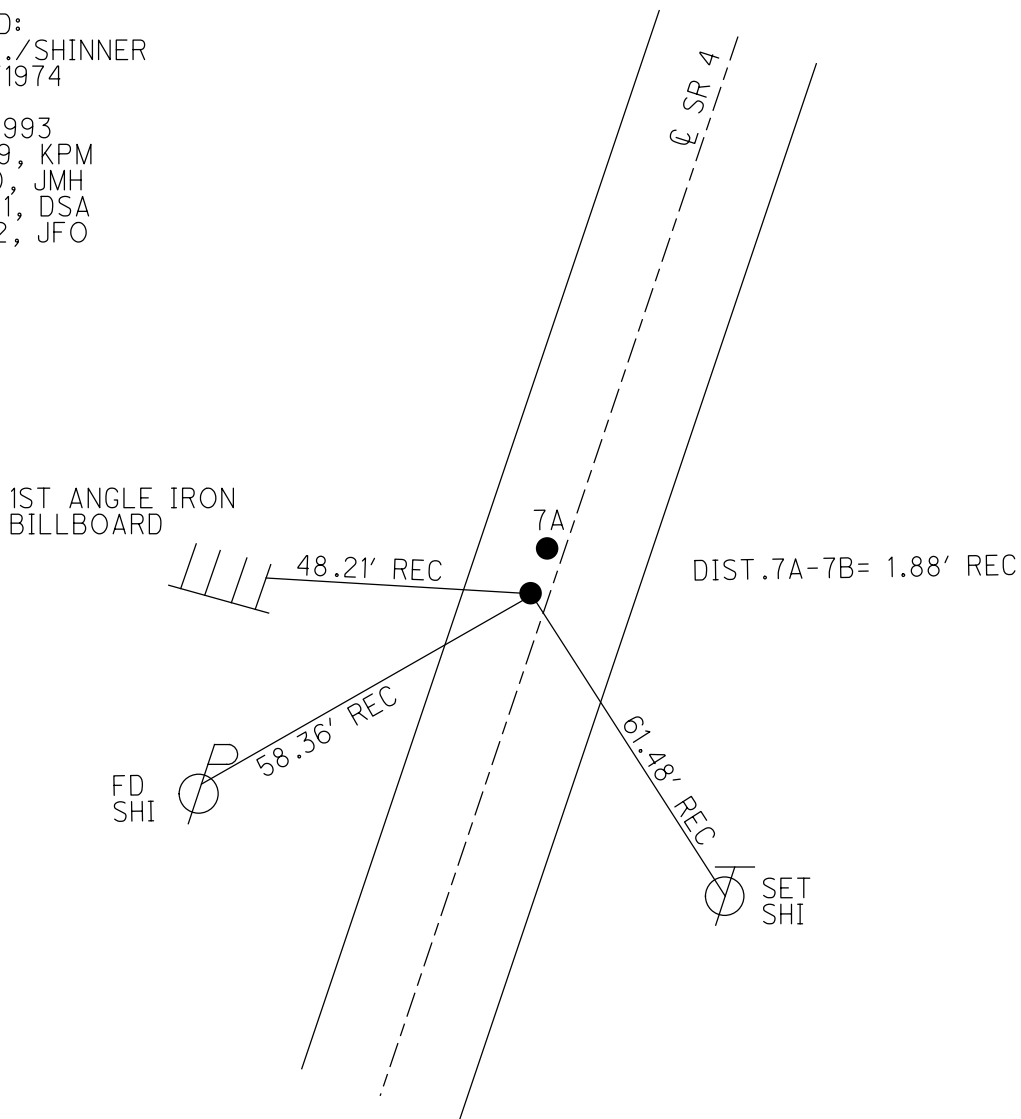
O.D.O.T. DISTRICT 2 SURVEY OFFICE (USE ONLY)

PERSONNEL _____ REFERENCE NO. 7 B SHEET 12 OF 41
 NOTES NIESE DATE 9/14/21 ROUTE SR 4
 H.C. AUBLE WEATHER WINDY COUNTY SENECA
 R.C. NIESE TEMP. 80° TOWNSHIP VENICE
 DWG BY RHOADES PID PVTRAIN SECTION 15
 T 1 N R 17 E

TYPE MONUMENT D.N.F. P.K./SHINNER
 ON SURFACE - ~~BELOW~~ ON
 OFFSET ☐ PAVEMENT 0.5' LT : ~~RT~~
9.3' TO LT EDGE PAVEMENT
 STATION: 191+05.35
 HORZ.DATUM: _____ GEOID: _____
 GRID: NORTHING: _____ EASTING: _____



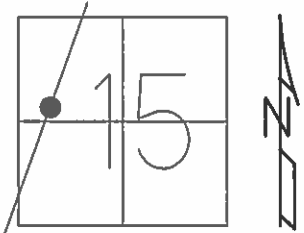
RECORD:
 FD P.K./SHINNER
 12/20/1974
 D.N.F.
 7/26/1993
 9/3/09, KPM
 8/11/10, JMH
 9/14/21, DSA
 2/8/22, JFO



O.D.O.T. DISTRICT 2 SURVEY OFFICE (USE ONLY)

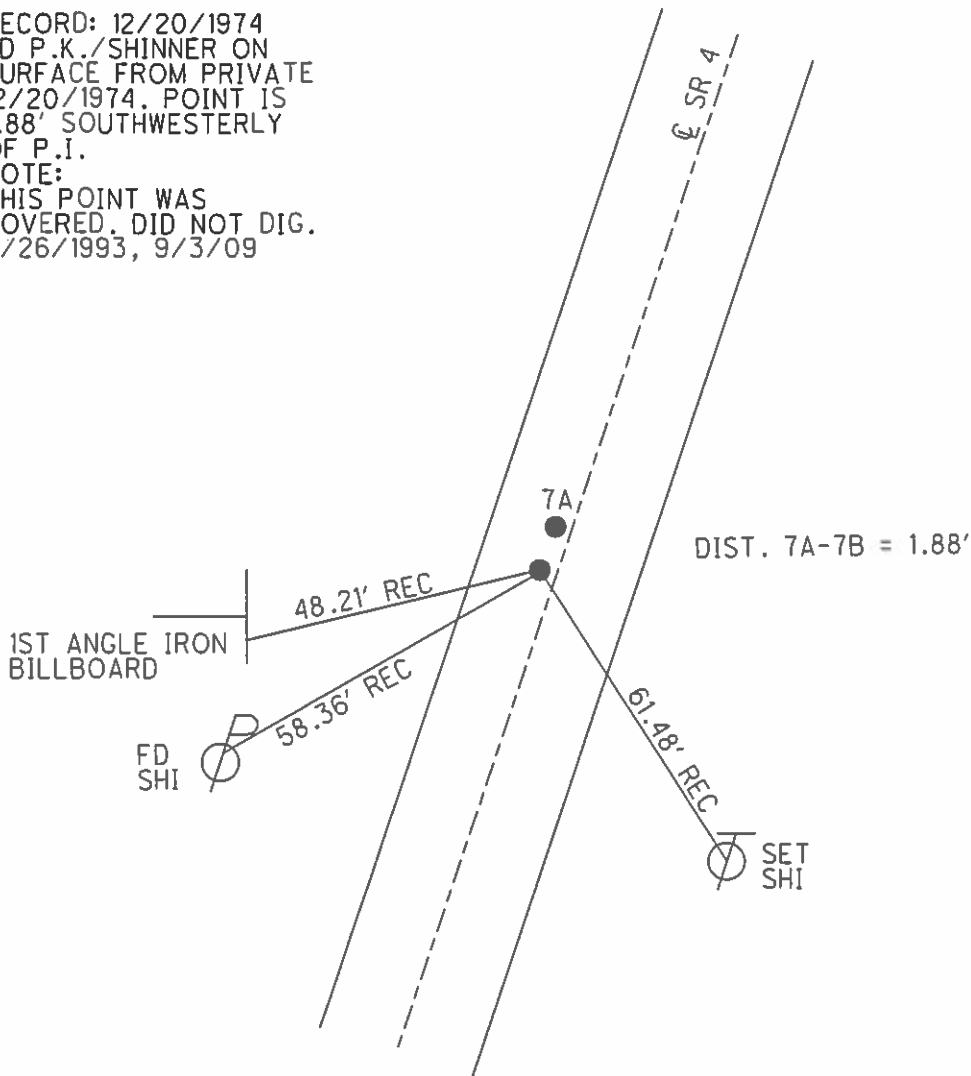
PERSONNEL _____ REFERENCE NO. 7 B SHEET 12 OF 41
 NOTES FINTEL DATE 8/11/10 ROUTE SR 4
 H.C. HARBAUGH WEATHER FAIR COUNTY SENECA
 R.C. FINTEL TEMP. 87° TOWNSHIP VENICE
 _____ SECTION 15
 _____ T 1 N R 17 E

TYPE MONUMENT P.K./SHINNER
 ON SURFACE - ~~BELOW~~ ON
 LEFT - C PAV'T - ~~RIGHT~~ 0.5'
9.3' TO LT EDGE PAVEMENT
 S.L.M. 191+05.35



GRID: NORTHING: _____ EASTING: _____

RECORD: 12/20/1974
 FD P.K./SHINNER ON
 SURFACE FROM PRIVATE
 12/20/1974. POINT IS
 1.88' SOUTHWESTERLY
 OF P.I.
 NOTE:
 THIS POINT WAS
 COVERED. DID NOT DIG.
 7/26/1993, 9/3/09



O.D.O.T. DISTRICT 2 SURVEY OFFICE

PERSONNEL

REFERENCE NO. 7-A

SHEET 11 OF 50

NOTES CHENEY

H.C. RIPPLE

DATE 7-26-1993

ROUTE S.R.#4

R.C. BARBOUR

WEATHER FAIR

COUNTY SENECA

GEYMAN

TEMP. 85°

TOWNSHIP VENICE

SECTION 15

T1 N R 17 E

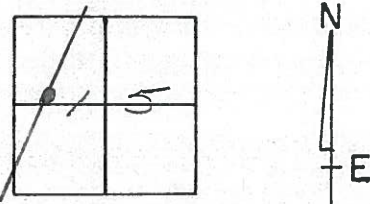
TYPE MONUMENT R.R. SPK.

~~ON~~ SURFACE - BELOW 2"±

LEFT-CL PAV'T. - ~~RIGHT~~ 0.5'

10' TO LT. EDGE PAVEMENT

S.L.M. 191+51



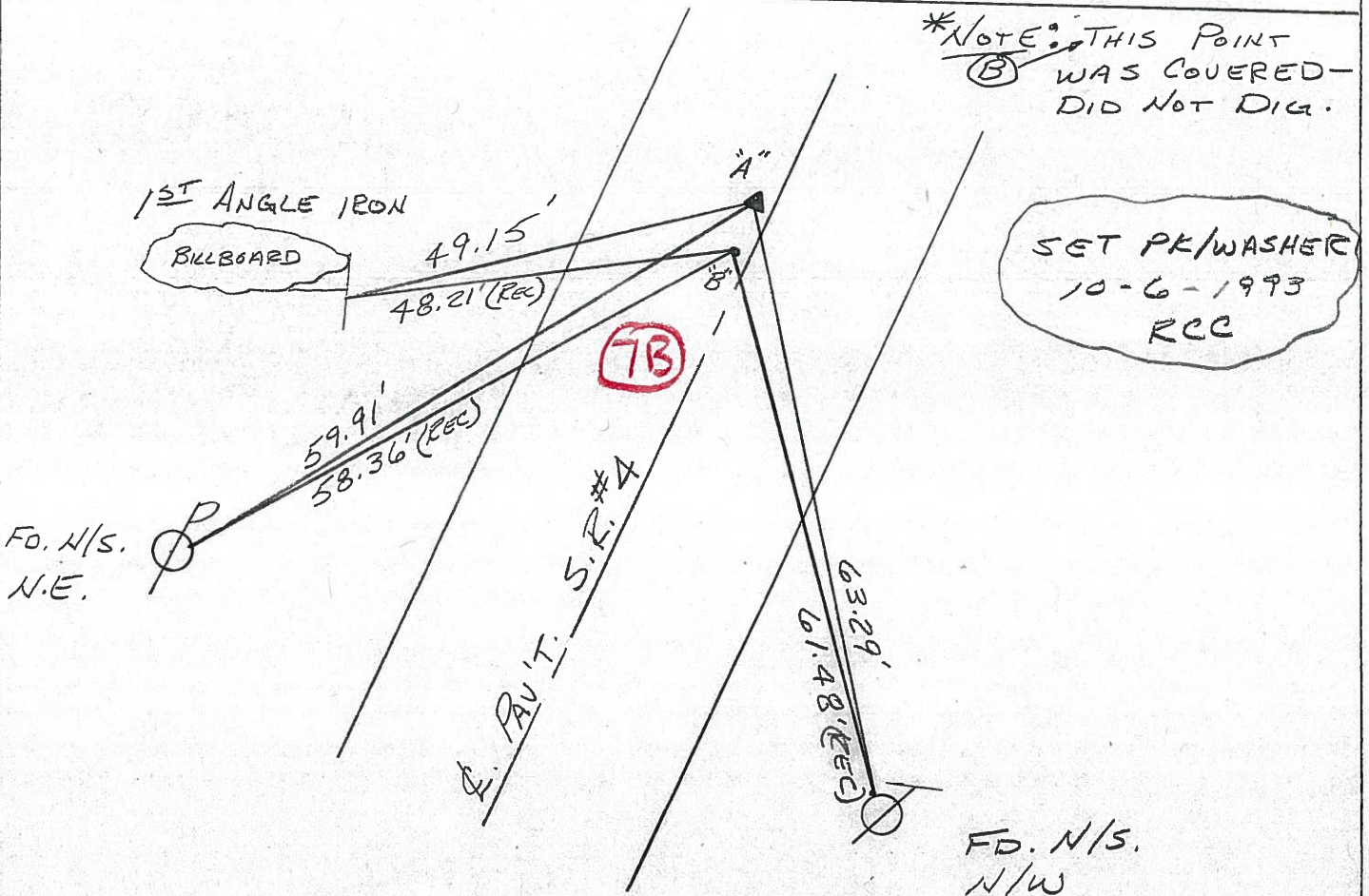
RECORD: 12-13-1974

Ⓐ P.I. STA. 191+08.59
SET P.K./WASHER ATOP
RR. SPK. 11-12-1974

RECORD: 12-20-1974

Ⓑ FD. P.K./SHINER ON SURFACE
FROM PRIVATE SURVEY
12-20-1974. POINT IS 1.88'
SOUTHWESTERLY OF P.I.

*NOTE: THIS POINT
Ⓑ WAS COVERED -
DID NOT DIG.



PERSONNEL	TITLE	PERSONNEL	TITLE	COUNTY	DATE	WEATHER	TEMP.
Cronin		Schneider		Seneca	12/13/74	overcast-rain	34°
Ash		Mosser		S. R. #4			
Ripple		Ripple		SEC. Crawford Co. Line-North			
Geyman							

DESCRIPTION Ties for Control Points JOB NO. _____

