

O.D.O.T. DISTRICT 2 SURVEY OFFICE (USE ONLY)

PERSONNEL

REFERENCE NO. 7 A

SHEET 11 OF 56

NOTES RHOADES

DATE 10/31/23

ROUTE SR 4

H.C. AUBLE

WEATHER CLOUDY

COUNTY SENECA

R.C. ASTON

TEMP. 40°

TOWNSHIP VENICE

NIESE

DWG BY RHOADES

PID 101241

SECTION 15

T 1 N R 17 E

TYPE MONUMENT MAG/WASHER

ON SURFACE - ~~BELOW~~ ON

OFFSET Q PAVEMENT 0.5' LT : ~~RT~~

9.3' TO LT EDGE PAVEMENT

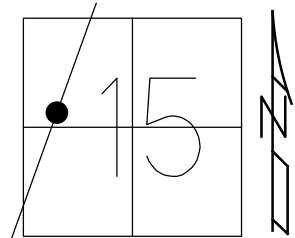
STATION: 191+05.35

HORZ.DATUM: NAD83(2011)

GEOID: NAVD88 2018

GRID: NORTHING: 501591.134

EASTING: 1858570.389



RECORD: P.I.  
 STA. 191+08.59  
 SET P.K./WASHER  
 ATOP R.R.SPIKE  
 11/12/74  
 SET P.K./WASHER  
 10/6/1993, RCC  
 FD P.K./WASHER  
 SV109  
 9/15/09  
 SET P.K./WASHER  
 FIN 109  
 10/19/10, KPM  
 FD P.K./WASHER  
 9/14/21, DSA  
 REFA7  
 2/8/22, JFO  
 7/13/23, JMR  
 SET MAG/WASHER  
 10/31/23, DSA

BOLT FOR  
 1ST ANGLE IRON  
 BILLBOARD

FD  
 SHI

49.21'

59.88'

7B

DIST.7A-7B= 1.88' REC

62.93'

92.99'

FD  
 SHI

FD  
 SHI

Q SR 4

O.D.O.T. DISTRICT 2 SURVEY OFFICE (USE ONLY)

PERSONNEL

REFERENCE NO. 7 A

SHEET 11 OF 41

NOTES NIESE

DATE 9/14/21

ROUTE SR 4

H.C. AUBLE

WEATHER WINDY

COUNTY SENECA

R.C. NIESE

TEMP. 80°

TOWNSHIP VENICE

SECTION 15

DWG BY RHOADES PID PVTRAIN

T 1 N R 17 E

TYPE MONUMENT P.K./WASHER

ON SURFACE - ~~BELOW~~ ON

OFFSET 0.5'  $\text{C}$  PAVEMENT LT : ~~RT~~

9.3' TO LT EDGE PAVEMENT

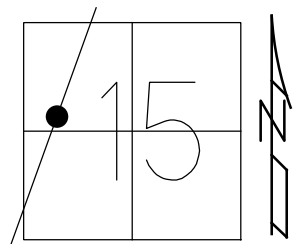
STATION: 191+05.35

HORZ. DATUM: NAD83(2011)

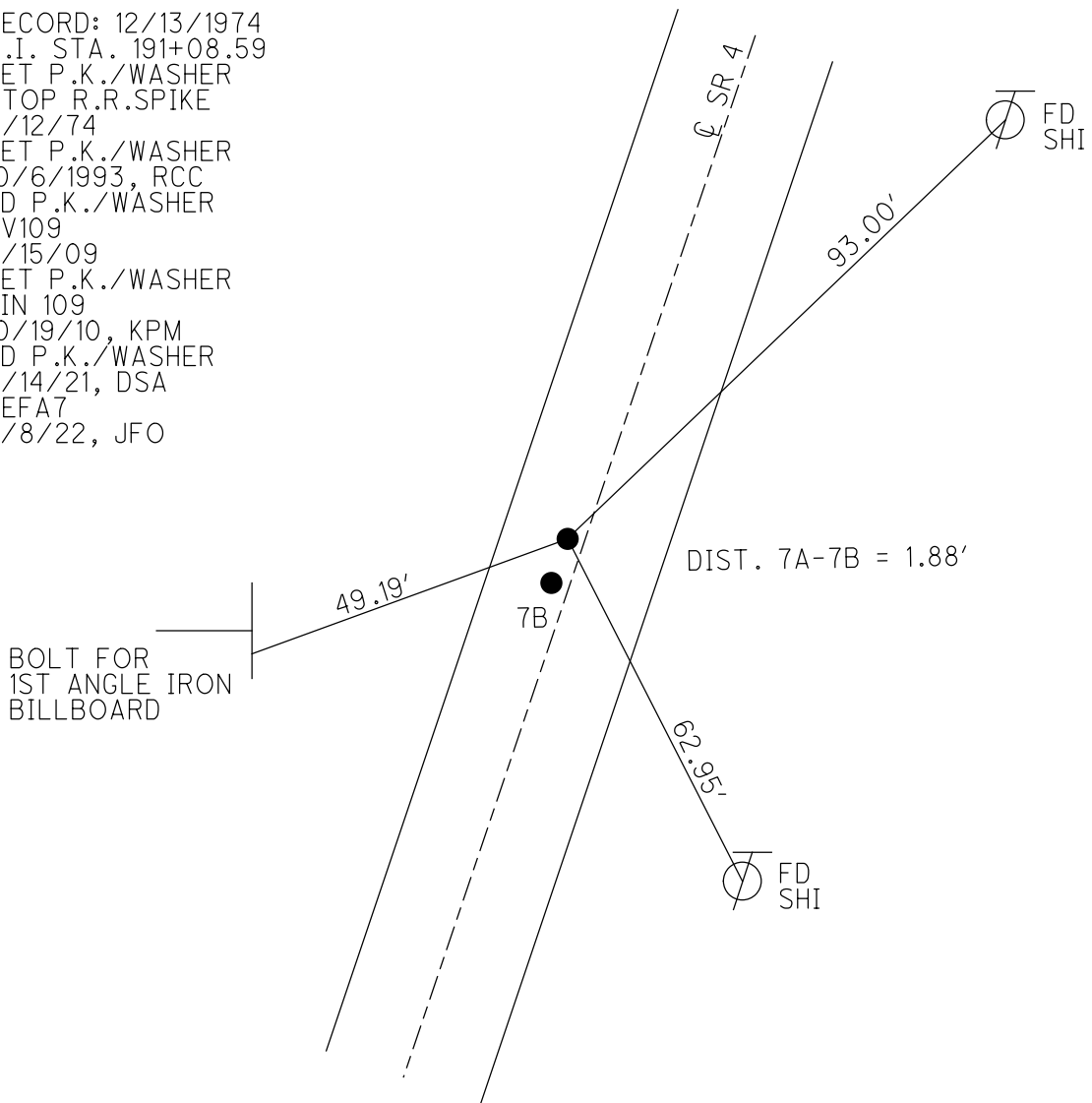
GEOID: NAVD88 2018

GRID: NORTHING: 501591.131

EASTING: 1858570.342



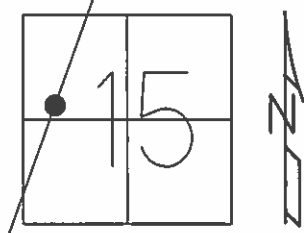
RECORD: 12/13/1974  
 P.I. STA. 191+08.59  
 SET P.K./WASHER  
 ATOP R.R.SPIKE  
 11/12/74  
 SET P.K./WASHER  
 10/6/1993, RCC  
 FD P.K./WASHER  
 SV109  
 9/15/09  
 SET P.K./WASHER  
 FIN 109  
 10/19/10, KPM  
 FD P.K./WASHER  
 9/14/21, DSA  
 REFA7  
 2/8/22, JFO



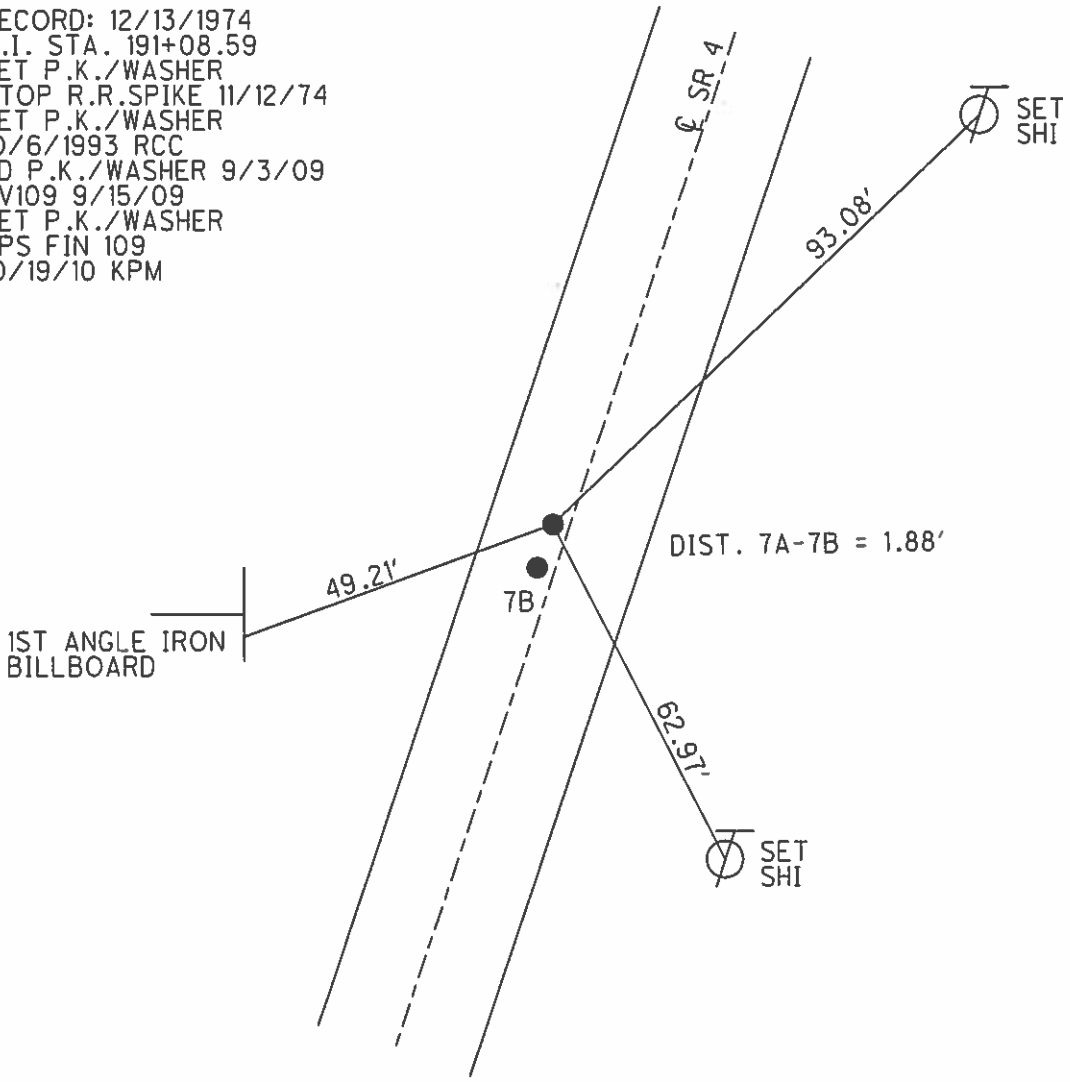
O.D.O.T. DISTRICT 2 SURVEY OFFICE (USE ONLY)

PERSONNEL \_\_\_\_\_ REFERENCE NO. 7 A SHEET 11 OF 41  
 NOTES FINTEL DATE 8/11/10 ROUTE SR 4  
 H.C. HARBAUGH WEATHER FAIR COUNTY SENECA  
 R.C. FINTEL TEMP. 87° TOWNSHIP VENICE  
 \_\_\_\_\_ SECTION 15  
 \_\_\_\_\_ T 1 N R 17 E

TYPE MONUMENT P.K./WASHER  
 ON SURFACE - ~~BELOW~~ ON  
 LEFT - ☉ PAV'T - ~~RIGHT~~ 0.5'  
9.3' TO LT EDGE PAVEMENT  
 S.L.M. 191+05.35  
 GRID: NORTHING: 501591.131 EASTING: 1858570.342



RECORD: 12/13/1974  
 P.I. STA. 191+08.59  
 SET P.K./WASHER  
 ATOP R.R.SPIKE 11/12/74  
 SET P.K./WASHER  
 10/6/1993 RCC  
 FD P.K./WASHER 9/3/09  
 SV109 9/15/09  
 SET P.K./WASHER  
 GPS FIN 109  
 10/19/10 KPM



# O.D.O.T. DISTRICT 2 SURVEY OFFICE

PERSONNEL

REFERENCE NO. 7-A

SHEET 11 OF 50

NOTES CHENEY

H.C. RIPPLE

R.C. BARBOUR

GEYMAN

DATE 7-26-1993

WEATHER FAIR

TEMP. 85°

ROUTE S.R. #4

COUNTY SENECA

TOWNSHIP VENICE

SECTION 15

T1 N R 17 E

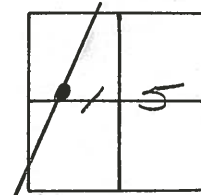
TYPE MONUMENT RR. SPK.

~~ON~~ SURFACE - BELOW 2"±

LEFT - CL. PAV'T. - RIGHT 0.5'

10' TO LT. EDGE PAVEMENT

S.L.M. 191451

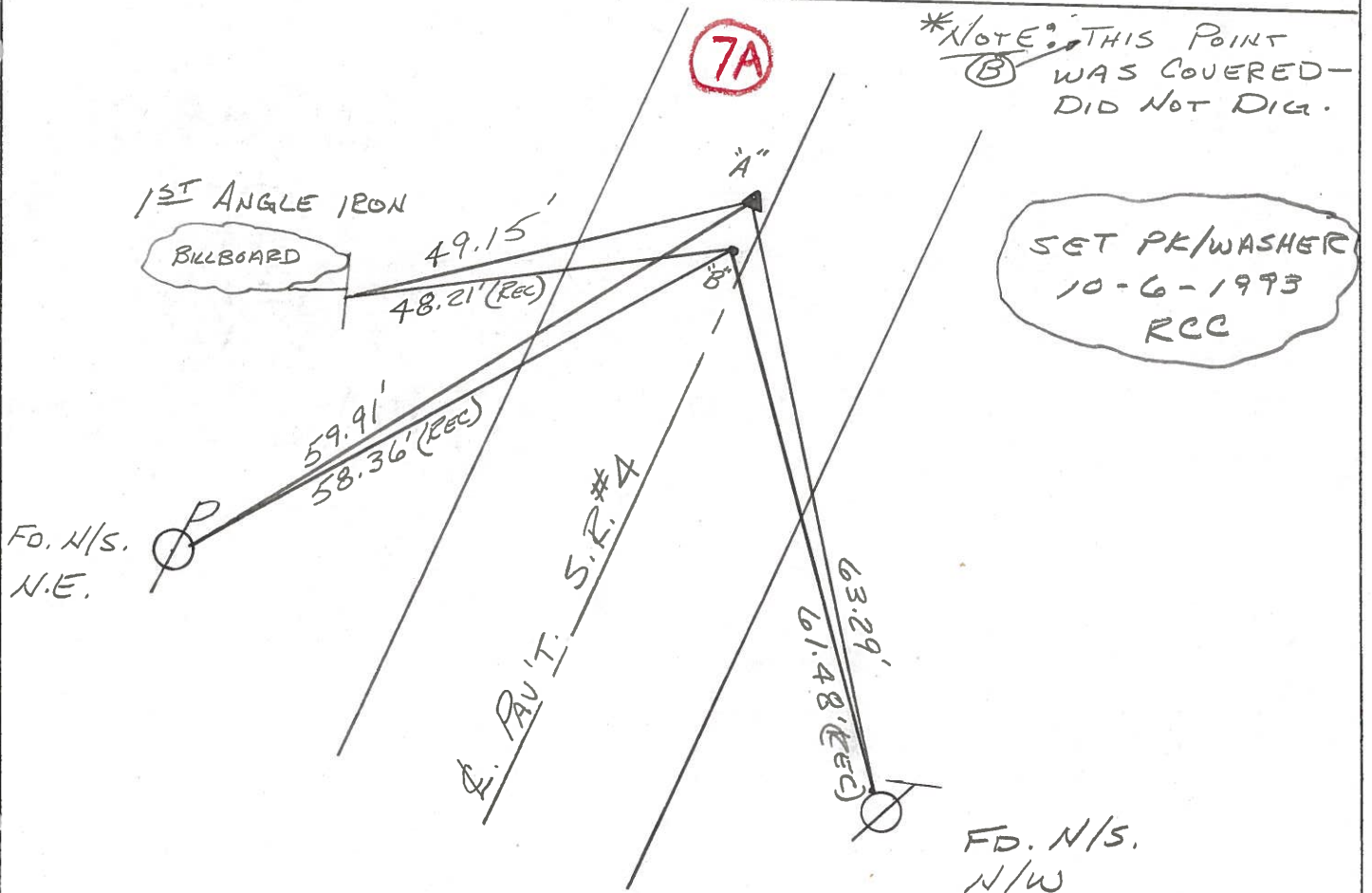


RECORD: 12-13-1974

Ⓐ P.I. STA. 191408.59  
SET P.K./WASHER ATOP  
RR. SPK. 11-12-1974

RECORD: 12-20-1974

Ⓑ FD. P.K./SHINER ON SURFACE  
FROM PRIVATE SURVEY  
12-20-1974. POINT IS 1.88'  
SOUTHWESTERLY OF P.I.



PERSONNEL TITLE PERSONNEL TITLE

Cronin Schneider

Ash Mosser

Ripple Ripple

Geyman

COUNTY Seneca

DATE 12/13/74

S. R. # 4

WEATHER overcast-rain

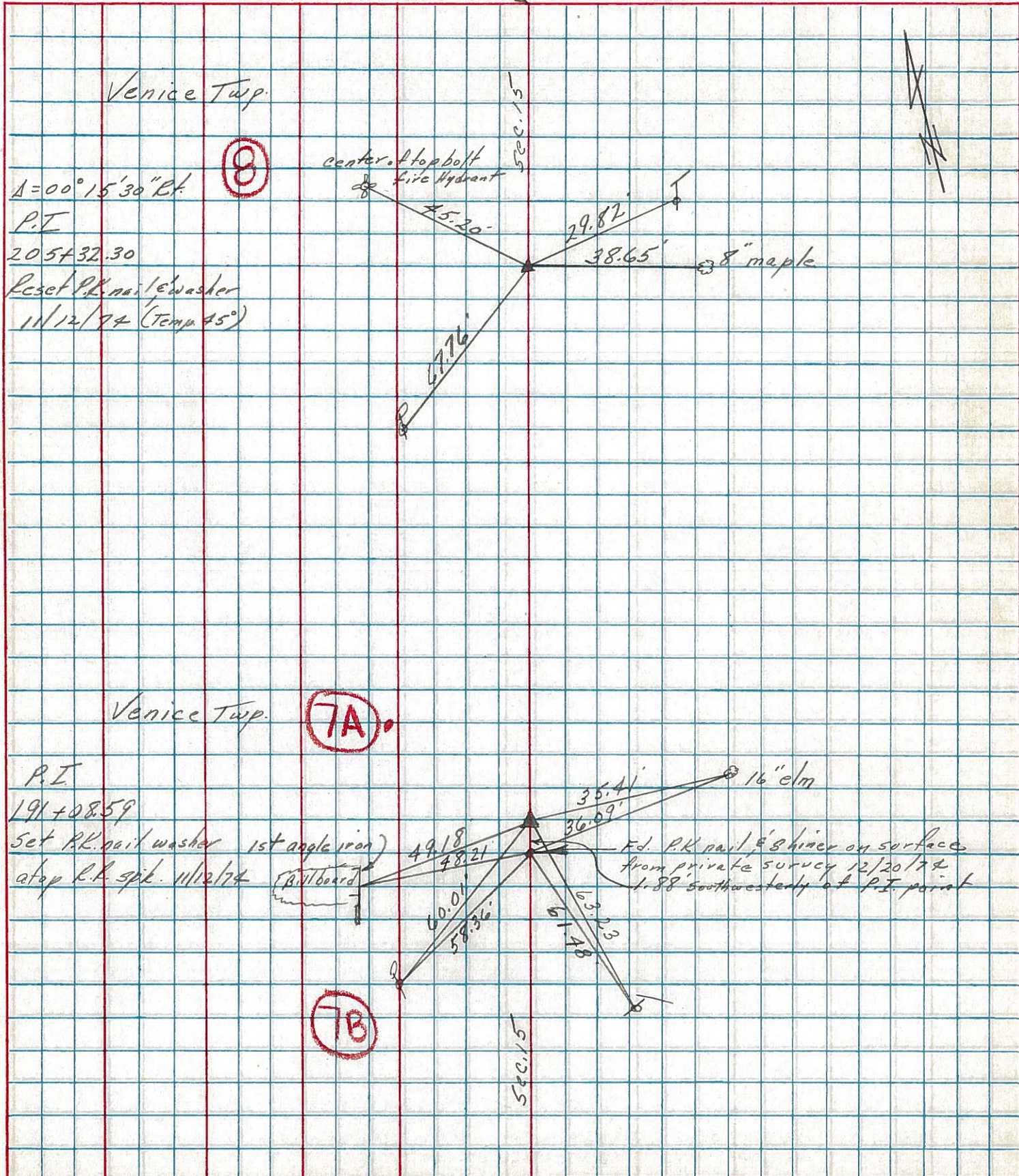
SEC. Crawford Co. Line-North

TEMP. 34°

DESCRIPTION Ties For Control Points

JOB NO.

LEFT CENTER LINE RIGHT



PERSONNEL TITLE PERSONNEL TITLE

Schneider Potts  
Mosser  
Barbour  
Redding

COUNTY Seneca DATE 9-27-68

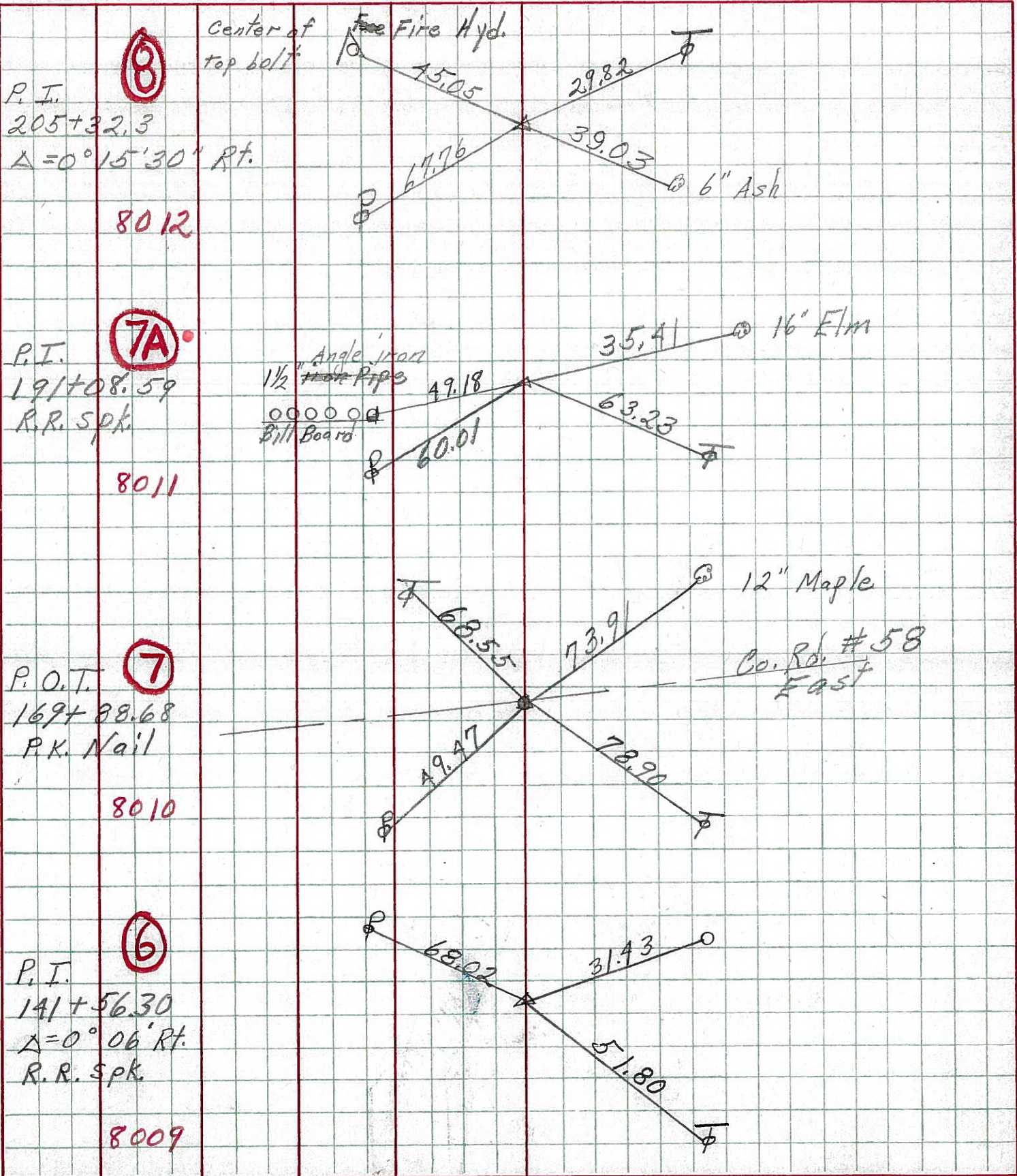
S. R. 4 WEATHER Fair

SEC Crawford Co. Line North TEMP. 70°

DESCRIPTION Ties for Control Points

LEFT CENTER LINE RIGHT

JOB NO.



PERSONNEL TITLE PERSONNEL TITLE COUNTY Seneca DATE 7-27-18  
 Massey \_\_\_\_\_ S. R. 4 WEATHER Fair  
 Barbour \_\_\_\_\_ SEC. Crawford Co. Line North TEMP. 70°  
 Redding \_\_\_\_\_  
 DESCRIPTION Ties for Control Points

LEFT	CENTER LINE	RIGHT	JOB NO.
Reset PK P.I. 11/12/74 205+32.3 $\Delta = 0^\circ 15' 30''$ Rt. 8012	Center of Fire Hydr. top bolt 4.520 4.505 67.76 17.76	29.82 38.65' 39.03 6" Ash	
Reset PK 11/12/74 P.I. 191+08.59 R.R. Spk. 8011	Angle iron 1/2" Pipe 000000 Bill Beard 49.18 60.01	35.41 16" Elm 63.23	$\begin{array}{r} 191+08.59 \\ 169+88.68 \\ \hline 22+19.91 \end{array}$
Reset PK 11/12/74 P.O.T. 169+88.68 P.K. Nail 8010	temp 45° 10 9' 44" 15" Maples 02/11/86 49.97 68.55	73.91 12" Maple 79.03 88.90 Co. Rd. #58 EAST New	
Dup. Did not reset 11/12/74 P.I. 141+56.30 $\Delta = 0^\circ 06'$ Rt. R.R. Spk. 8009	67.89 68.02 30.77	107.74 51.80	

PERSONNEL TITLE PERSONNEL TITLE COUNTY Seneca DATE  
 Krabill \_\_\_\_\_  
 Kowaleski \_\_\_\_\_ S. R. H WEATHER  
 Brooks \_\_\_\_\_ SEC. \_\_\_\_\_ TEMP.

DESCRIPTION LEFT CENTER LINE RIGHT JOB NO.

127+01.32  
 P.I.  $\Delta = 0^{\circ}16'00''$  RT  
 X in conc. opp slab

5A

# 8



1-16-64

141+56.30  
 P.I.  $\Delta = 0^{\circ}06'00''$  RT  
 P.K. nail

6

# 9

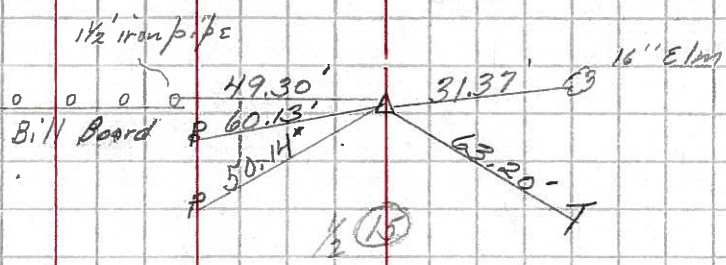


1-16-64

191+08.84  
 P.I.  $\Delta = 0^{\circ}03'00''$  RT  
 P.K. nail

7A

# 10

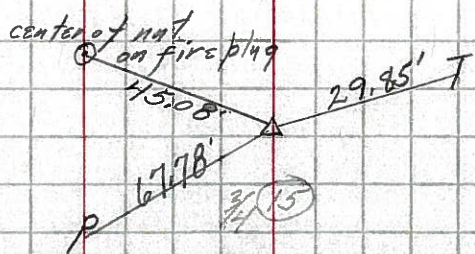


1-16-64

205+32.9  
 P.I.  $\Delta = 0^{\circ}15'30''$  RT  
 P.K. nail

8

# 11





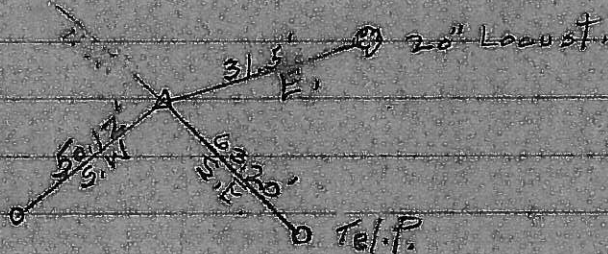
# 240

(7A)

242

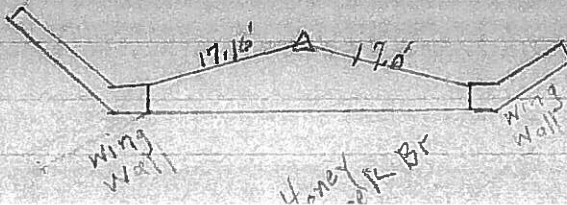
Could Not Locate  
Ties Gene

PPole



# 246

(10)



S.R.#4 North of Attic

# 253

(16)

3/4\"/>

30.01'

W.

90.56'

N.E.

Tel.P.

45.09'

S.E.

Tel.P.

506+17  
078+14  
58 03