

O.D.O.T. DISTRICT 2 SURVEY OFFICE (USE ONLY)

PERSONNEL

REFERENCE NO. 9 AB

SHEET 17 OF 56

NOTES RHOADES

DATE 11/1/23

ROUTE SR 4

H.C. AUBLE

WEATHER SUNNY

COUNTY SENECA

R.C. MILLER

TEMP. 36°

TOWNSHIP VENICE

SECTION 15

DWG BY RHOADES

PID 101241

T 1 N R 17 E

TYPE MONUMENT MAG/WASHER

ON SURFACE - ~~BELOW~~ ON

OFFSET ☑ PAVEMENT 1.0' LT : ~~RT~~

9.0' TO LT EDGE PAVEMENT

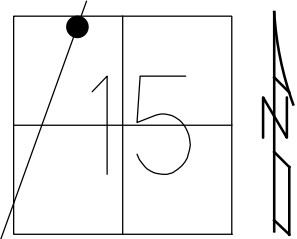
STATION: 224+55

HORZ. DATUM: NAD83(2011)

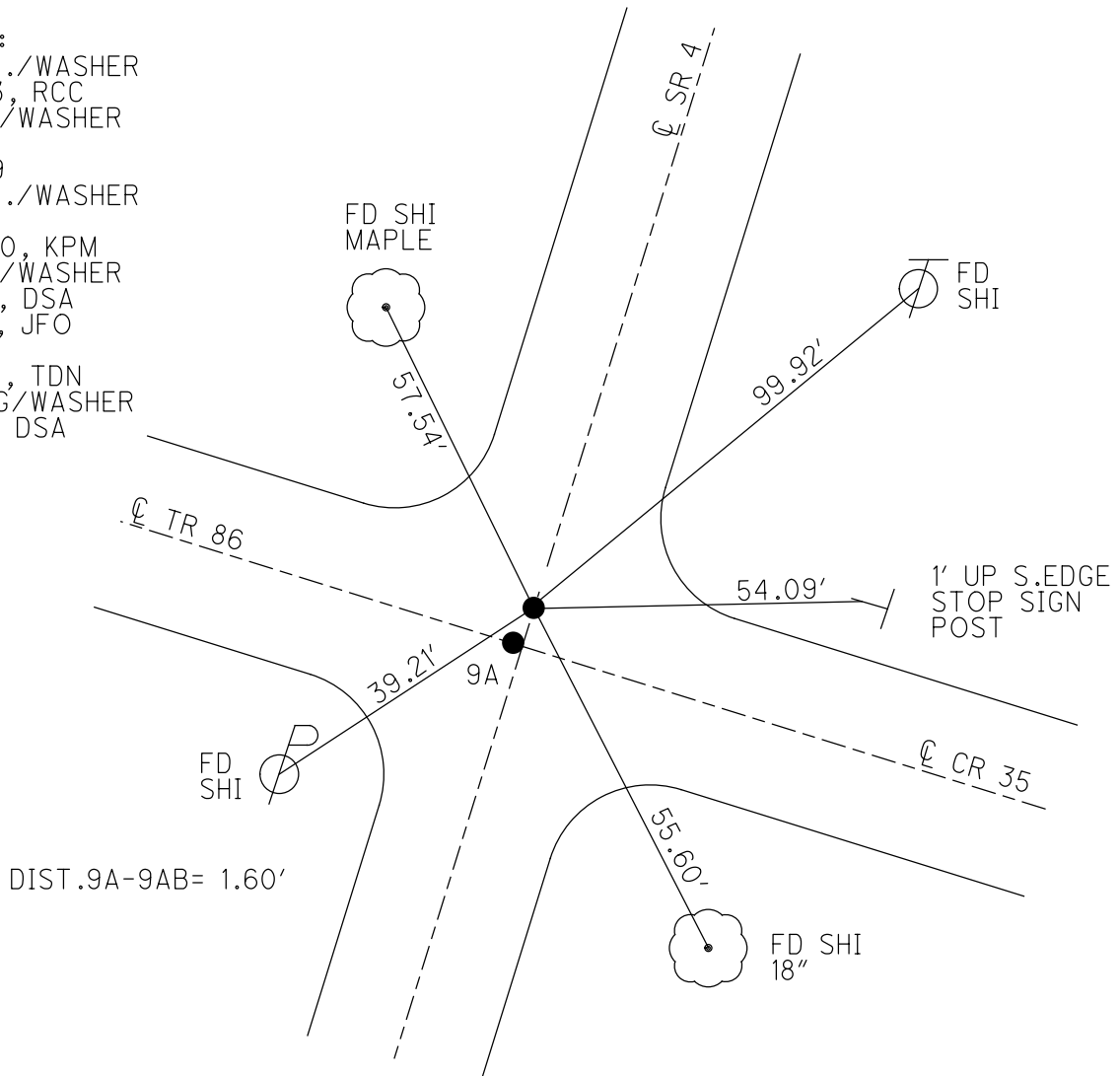
GEOID: NAVD88 2018

GRID: NORTHING: 504700.663

EASTING: 1859814.453



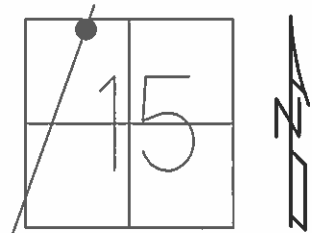
RECORD:
 SET P.K./WASHER
 10/7/93, RCC
 FD P.K./WASHER
 SV115
 9/15/09
 SET P.K./WASHER
 FIN 115
 10/20/10, KPM
 FD P.K./WASHER
 9/15/21, DSA
 2/8/22, JFO
 REF9AB
 7/17/23, TDN
 SET MAG/WASHER
 11/1/23, DSA



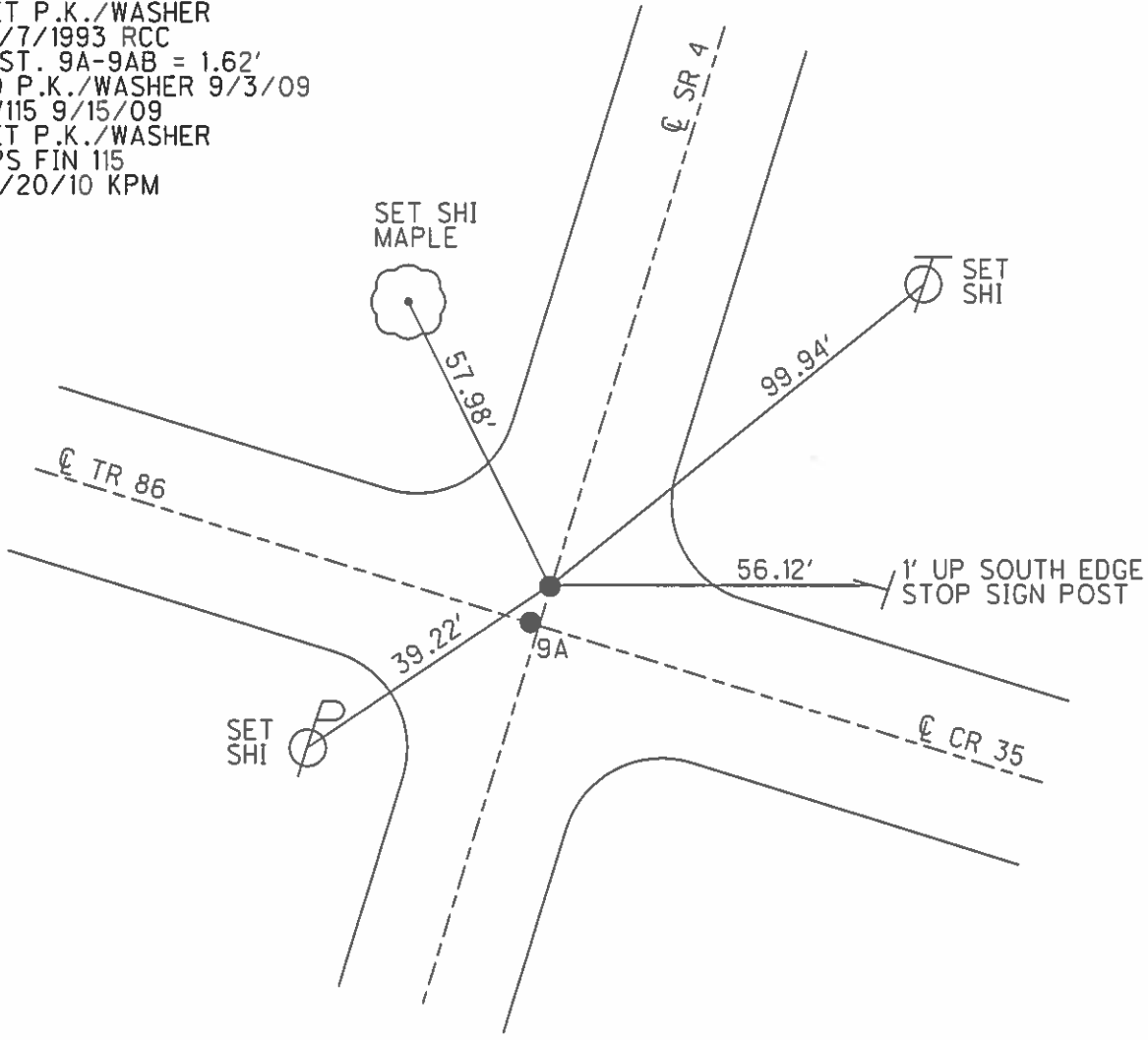
O.D.O.T. DISTRICT 2 SURVEY OFFICE (USE ONLY)

PERSONNEL _____ REFERENCE NO. 9 AB SHEET 17 OF 41
 NOTES FINTEL DATE 8/11/10 ROUTE SR 4
 H.C. HARBAUGH WEATHER CLOUDY COUNTY SENECA
 R.C. FINTEL TEMP. 90° TOWNSHIP VENICE
 _____ SECTION 15
 _____ T 1 N R 17 E

TYPE MONUMENT P.K./WASHER
 ON SURFACE - ~~BELOW~~ ON
 LEFT - ☉ PAV'T - ~~RIGHT~~ 0.3'
9.0' TO LT EDGE PAVEMENT
 S.L.M. 224+55
 GRID: NORTHING: 504700.671 EASTING: 1859814.400



RECORD:
 SET P.K./WASHER
 10/7/1993 RCC
 DIST. 9A-9AB = 1.62'
 FD P.K./WASHER 9/3/09
 SV115 9/15/09
 SET P.K./WASHER
 GPS FIN 115
 10/20/10 KPM



O.D.O.T. DISTRICT 2 SURVEY OFFICE

PERSONNEL

REFERENCE NO. 9-A

SHEET 15 OF 50

NOTES CHENEY

H.C. FIPPLE

R.C. BARBOUR

GEYMAN

DATE 7-26-1993

WEATHER FAIR

TEMP. 90°

ROUTE SR. #4

COUNTY SENECA

TOWNSHIP VENICE

SECTION 15

T 1 N R 17 E

TYPE MONUMENT

"A" PK/WASHER

"B" PK NAIL

ON SURFACE - BELOW

ON

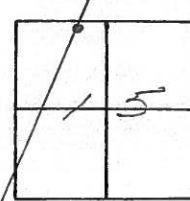
LEFT - PAV'T. - RIGHT

"A" 0.5 LT.

"B" ONE

TO EDGE PAVEMENT

S.L.M. "A" 225+08



RECORD: 12-17-1974 "A"
 P.I. STA. 224+88.58
 $\Delta = 00^{\circ} 19' R$.
 SET SMALL SPK/WASHER

*NOTE: PK/WASHER SET
 12-18-1974 ATOP FD.
 NAIL SPIKE.
DID NOT FIND IN 1993.
 RCC

SET PK'S/WASHERS
 10-7-1993
 RCC

1.60' (M) BETWEEN
 PTS. "A" & "B"

