

O.D.O.T. DISTRICT 2 SURVEY OFFICE (USE ONLY)

PERSONNEL

REFERENCE NO. 9 C

SHEET 19 OF 56

NOTES RHOADES DATE 11/1/23
 H.C. AUBLE WEATHER SUNNY
 R.C. MILLER TEMP. 36°

ROUTE SR 4
 COUNTY SENECA
 TOWNSHIP VENICE
 SECTION 10
 T 1 N R 17 E

DWG BY RHOADES PID 101241

TYPE MONUMENT MAG/WASHER

ON SURFACE - ~~BELOW~~ ON

OFFSET Q PAVEMENT ON LT : RT

10' TO RT EDGE PAVEMENT

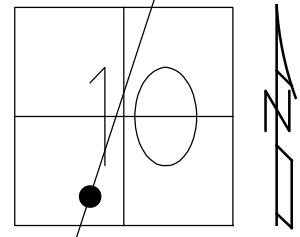
STATION: 229+93

HORZ.DATUM: NAD83(2011)

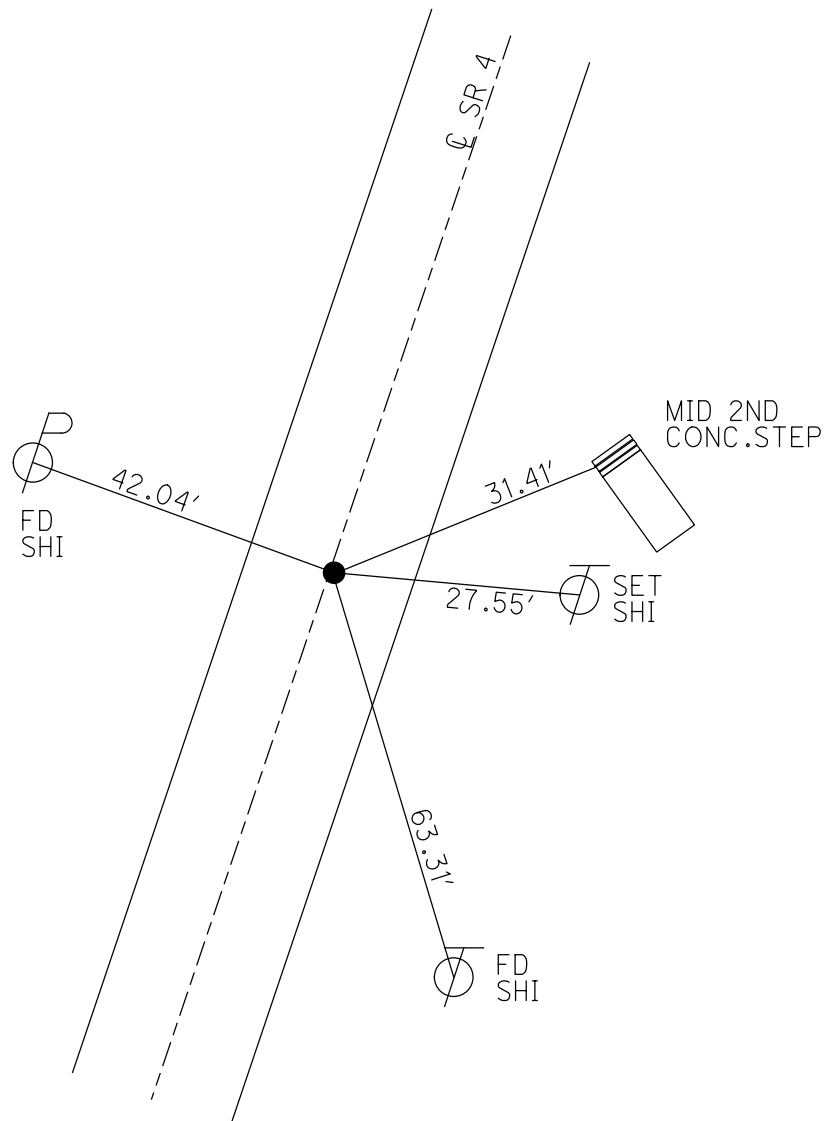
GEOID: NAVD88 2018

GRID: NORTHING: 505186.001

EASTING: 1860038.971



RECORD: P.C.
 STA. 229+96.76
 SET P.K./WASHER
 13/15/83
 FD P.K./WASHER
 SV117
 9/15/09
 SET P.K./WASHER
 FIN 117
 10/20/10 KPM
 FD P.K./WASHER
 9/15/21, DSA
 2/8/22, JFO
 REF9C
 7/17/23, TDN
 SET MAG/WASHER
 11/1/23, DSA



O.D.O.T. DISTRICT 2 SURVEY OFFICE (USE ONLY)

PERSONNEL

REFERENCE NO. 9 C

SHEET 19 OF 41

NOTES NIESE

DATE 9/15/21

ROUTE SR 4

H.C. AUBLE

WEATHER OVERCAST

COUNTY SENECA

R.C. NIESE

TEMP. 66°

TOWNSHIP VENICE

SECTION 10

DWG BY RHOADES PID PVTRAIN

T 1 N R 17 E

TYPE MONUMENT P.K./WASHER

ON SURFACE - ~~BELOW~~ ON

OFFSET ☉ PAVEMENT 0.5' ~~±~~ : RT

10' TO RT EDGE PAVEMENT

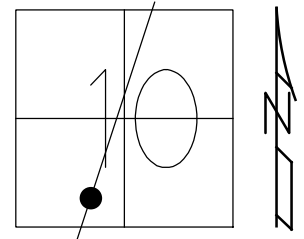
STATION: 229+93

HORIZ.DATUM: NAD83(2011)

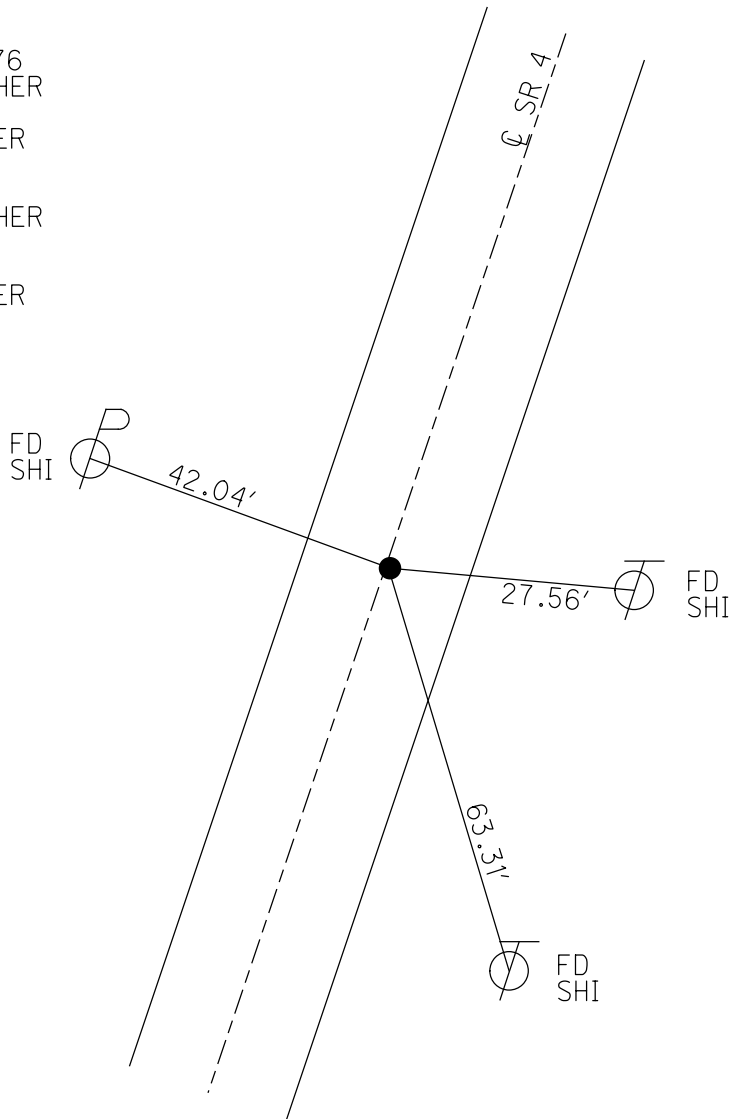
GEOID: NAVD88 2012A

GRID: NORTHING: 505186.097

EASTING: 1860038.935



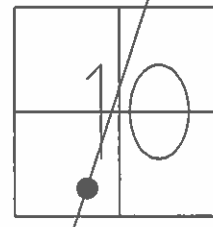
RECORD: P.C.
 STA. 229+96.76
 SET P.K./WASHER
 13/15/83
 FD P.K./WASHER
 SV117
 9/15/09
 SET P.K./WASHER
 FIN 117
 10/20/10 KPM
 FD P.K./WASHER
 9/15/21, DSA
 2/8/22, JFO



O.D.O.T. DISTRICT 2 SURVEY OFFICE (USE ONLY)

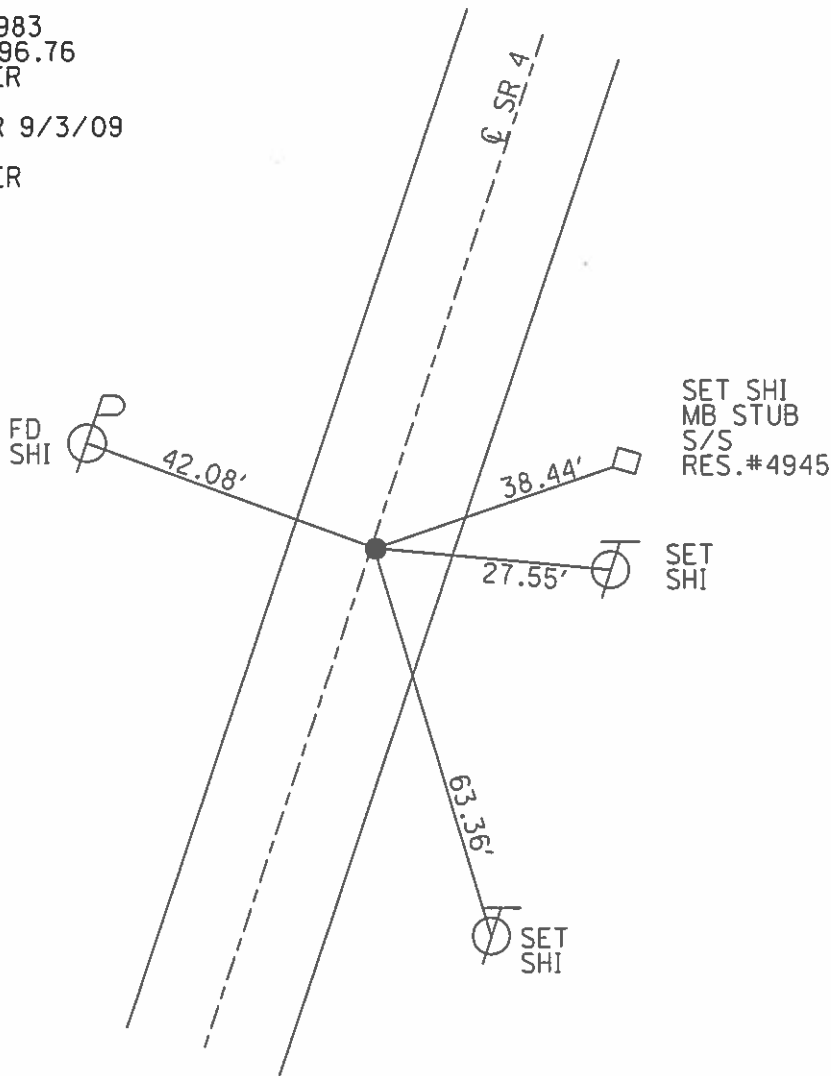
PERSONNEL	REFERENCE NO.	<u>9 C</u>	SHEET	<u>19</u>	OF	<u>41</u>
NOTES	DATE	<u>8/11/10</u>	ROUTE	<u>SR 4</u>		
H.C.	WEATHER	<u>CLOUDY</u>	COUNTY	<u>SENECA</u>		
R.C.	TEMP.	<u>85°</u>	TOWNSHIP	<u>VENICE</u>		
			SECTION	<u>10</u>		
			T	<u>1</u>	N	R
					<u>17</u>	E

TYPE MONUMENT P.K./WASHER
 ON SURFACE - ~~BELOW~~ ON
~~LEFT~~ - CL PAV'T - RIGHT 0.5'
10' TO RT EDGE PAVEMENT
 S.L.M. 228+90.03



GRID: NORTHING: 505186.097 EASTING: 1860038.935

RECORD: 3/15/1983
 P.C. STA. 229+96.76
 SET P.K./WASHER
 1.5' RT OF CL
 FD P.K./WASHER 9/3/09
 SV117 9/15/09
 SET P.K./WASHER
 GPS FIN 117
 10/20/10 KPM



O.D.O.T. DISTRICT 2 SURVEY OFFICE

PERSONNEL

REFERENCE NO. 9-C

SHEET OF

NOTES BARNHISEL

H.C. CORDES

DATE 11-14-96

ROUTE 4

R.C. CANTERBURY

WEATHER SUNNY

COUNTY Seneca

HUSS

TEMP. +25°

TOWNSHIP VENICE

SECTION 10

T. 1 N. R 17 E

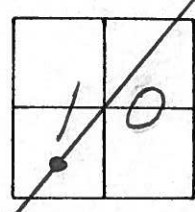
TYPE MONUMENT PK & WASHER

ON SURFACE - ~~BELOW~~ yes

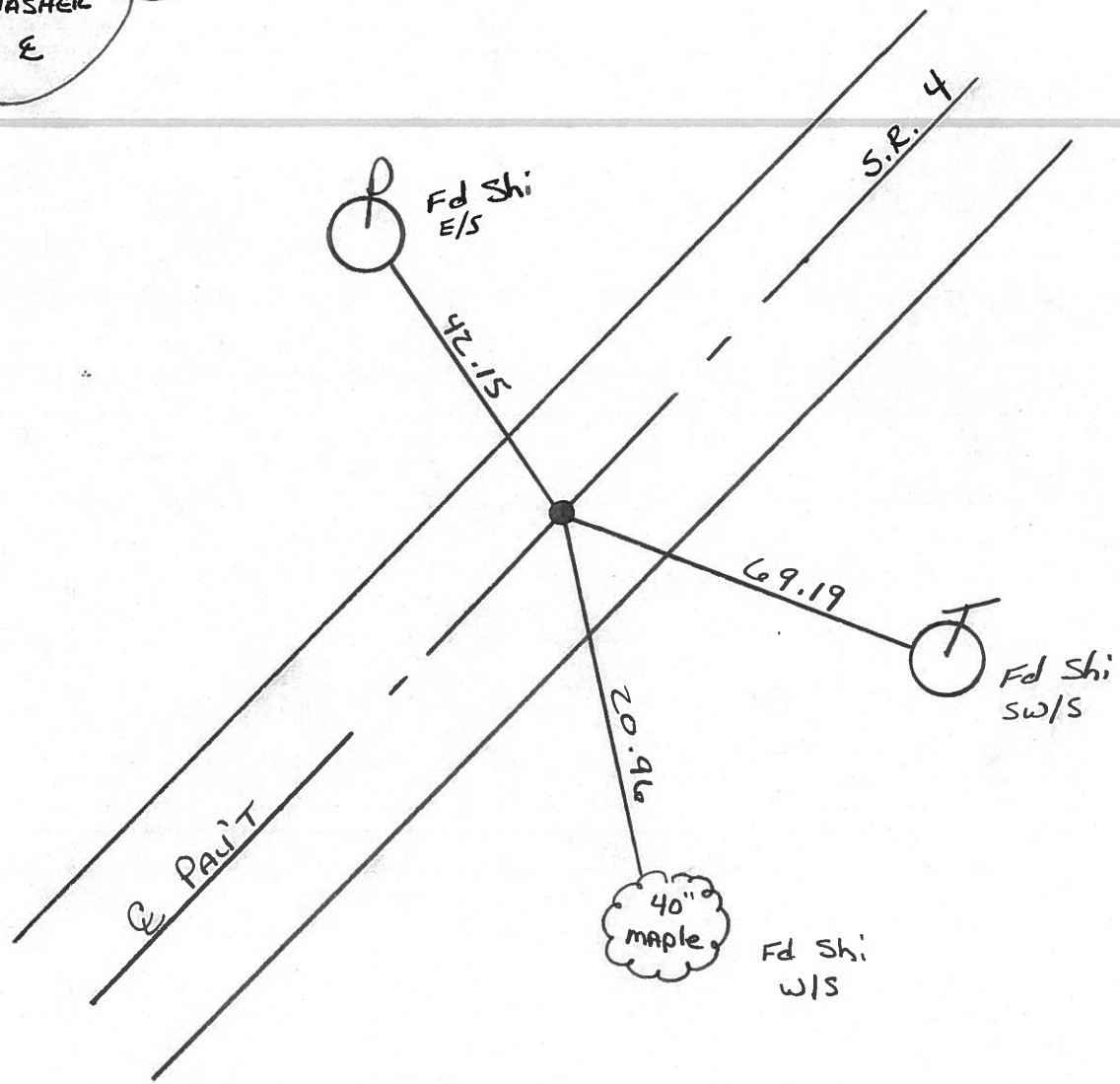
~~LEFT~~ - & PAV'T. - ~~RIGHT~~ yes

11.0 TO LT EDGE PAVEMENT

S.L.M. 230+46



RECORD: 3-15-1983
 P.C. STA: 229+96.76
 SET PK & WASHER
 1.5' RT OF E



O.D.O.T. DISTRICT 2 SURVEY OFFICE

PERSONNEL

REFERENCE NO. 9-C

SHEET 17 OF 50

NOTES CHENEY

H.C. RIPPLE

R.C. BARBOUR

GEYMAN

DATE 7-26-1993

WEATHER FAIR

TEMP. 90°

ROUTE 4

COUNTY SENECA

TOWNSHIP VENICE

SECTION 10

T. IN R. 17E

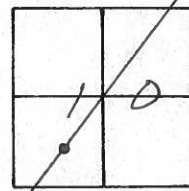
TYPE MONUMENT PK/WASHER

ON SURFACE - BELOW ON

~~LEFT~~ - PAV'T. - ~~RIGHT~~ ON

11' TO LT. EDGE PAVEMENT

S.L.M. 230 + 46



RECORD: 3-15-1983

P.C. STA. 229 + 96.76

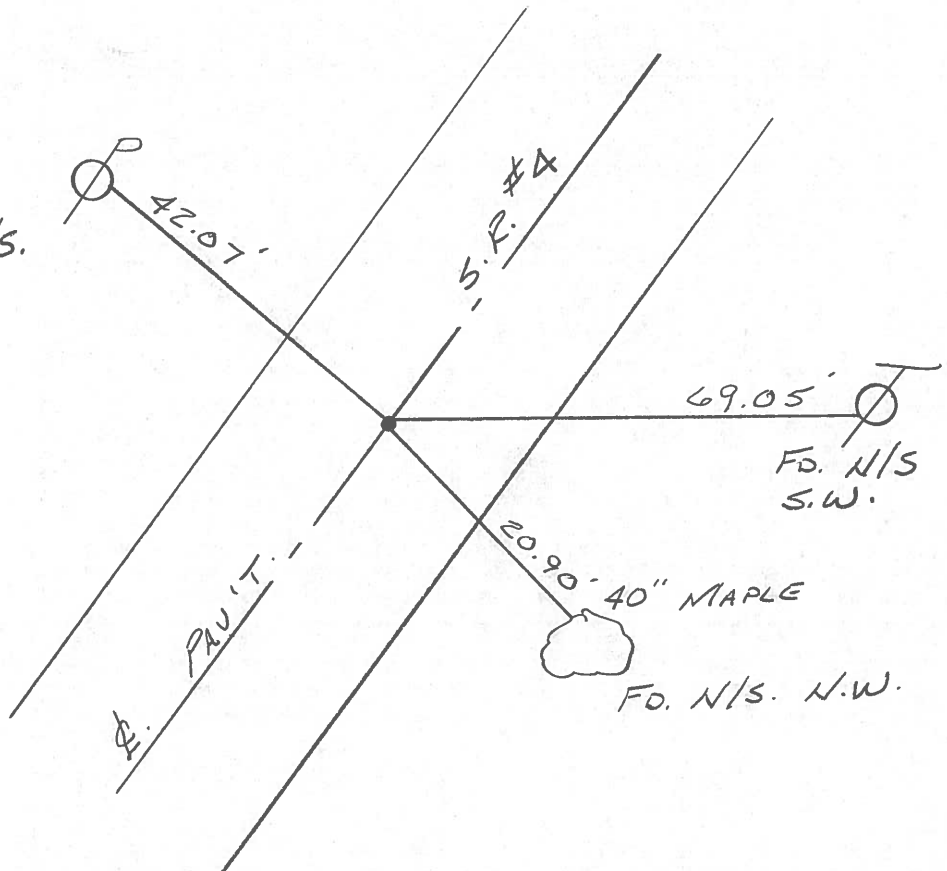
SET PK/WASHER

1.5' RT. & PAV'T.

SET PK/WASHER
10-7-1993
RCC

FD. & REDRAWN
3-16-1992

FD. N/S.
E.



69.05'

FD. N/S
S.W.

FD. N/S. N.W.

O.D.O.T. DISTRICT 2 SURVEY OFFICE

PERSONNEL _____

REFERENCE NO. _____

SHEET 2 OF 4

NOTES VAN DUSEN PC

H.C. LUCE ∇

DATE MARCH 16, 1997

ROUTE 4

R.C. BARNHISEL T

WEATHER NICE

COUNTY SENECA

LONG $\$$

TEMP. 32° F

TOWNSHIP VENICE

ROMETO $\$$

SECTION 10

T 1 N R 17 E

TYPE MONUMENT PK

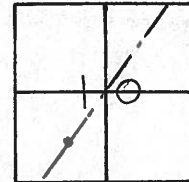
ON SURFACE - BELOW SURFACE

LEFT - \odot PAV'T. - RIGHT E

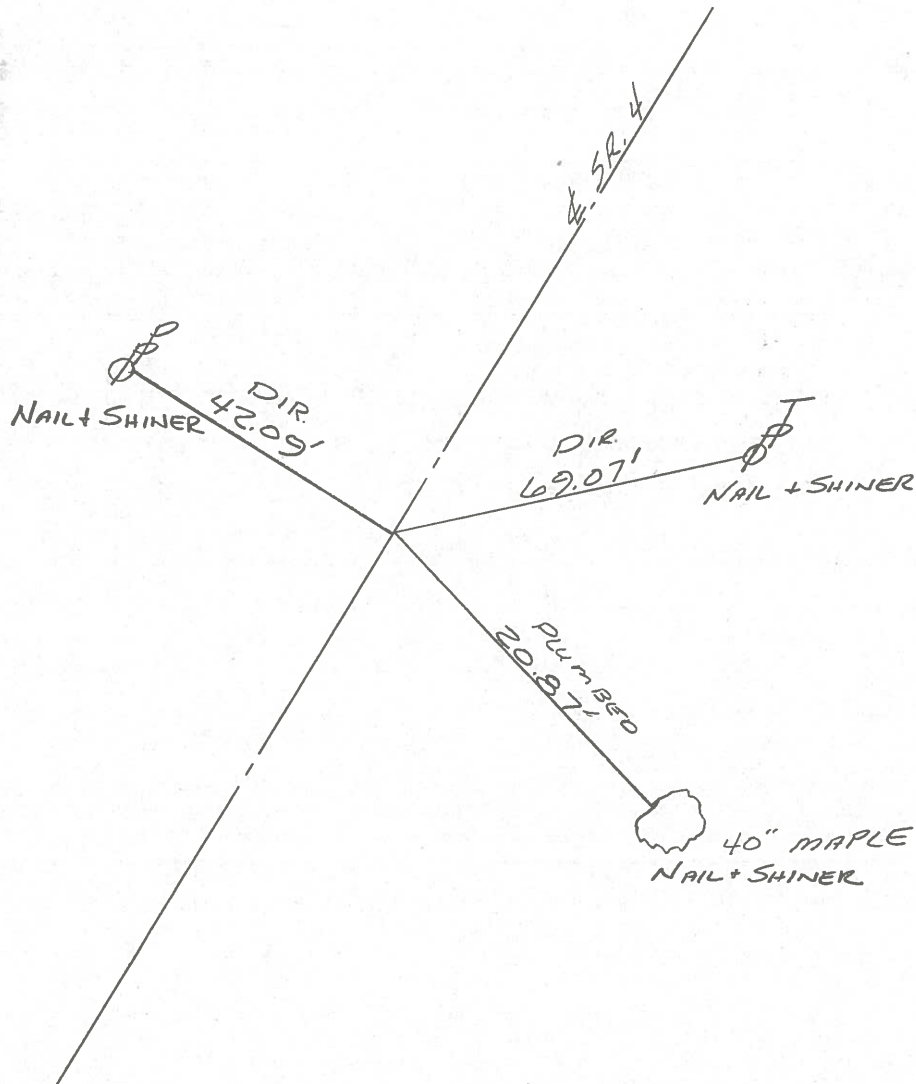
TO EDGE PAVEMENT

S.L.M. PC 229+96.76

96



FD. PK. NAIL



O.D.O.T. DISTRICT 2 SURVEY OFFICE

PERSONNEL _____

REFERENCE NO. _____

SHEET 2 OF 5

NOTES CHENEY

H.C. RIPPLE

R.C. CHENEY

DATE 9-25-1991

WEATHER SUNNY

TEMP. 65°

ROUTE 4

COUNTY SENECA

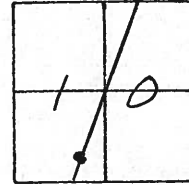
TOWNSHIP VENICE

SECTION 10

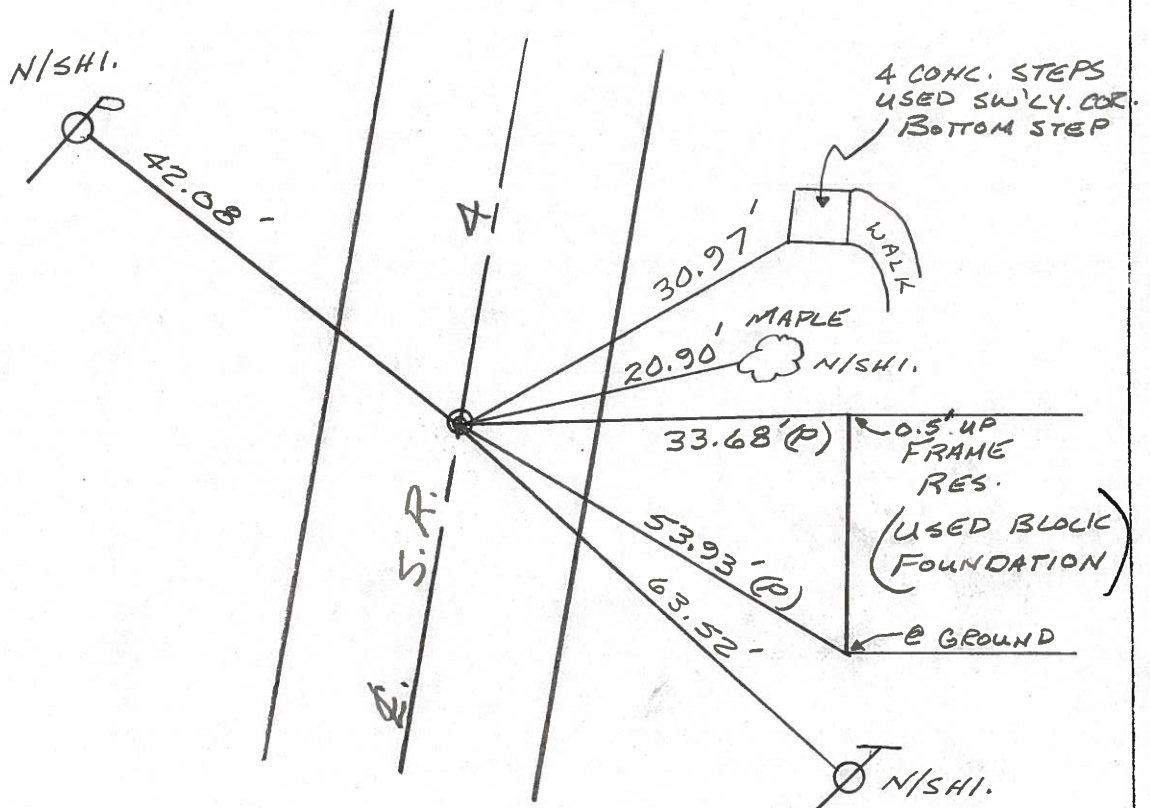
TIN RIBE

TYPE MONUMENT ^{FD.} PK/WASHER
 ON SURFACE - BELOW
 LEFT - & PAV'T. - RIGHT
TO EDGE PAVEMENT
 S.L.M. 229+96.76

96



P.C.



PERSONNEL TITLE PERSONNEL TITLE

Cronin

COUNTY Seneca

DATE 3/15/83

Ripple

S. R. # 4

WEATHER sunny

Geyman

Barbour

SEC. Bridge - Sen. 4-0441

TEMP. 38°

DESCRIPTION Ties for Control Points

JOB NO. _____

