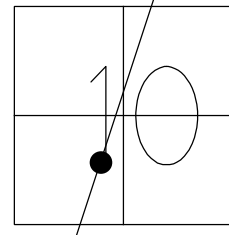


O.D.O.T. DISTRICT 2 SURVEY OFFICE (USE ONLY)

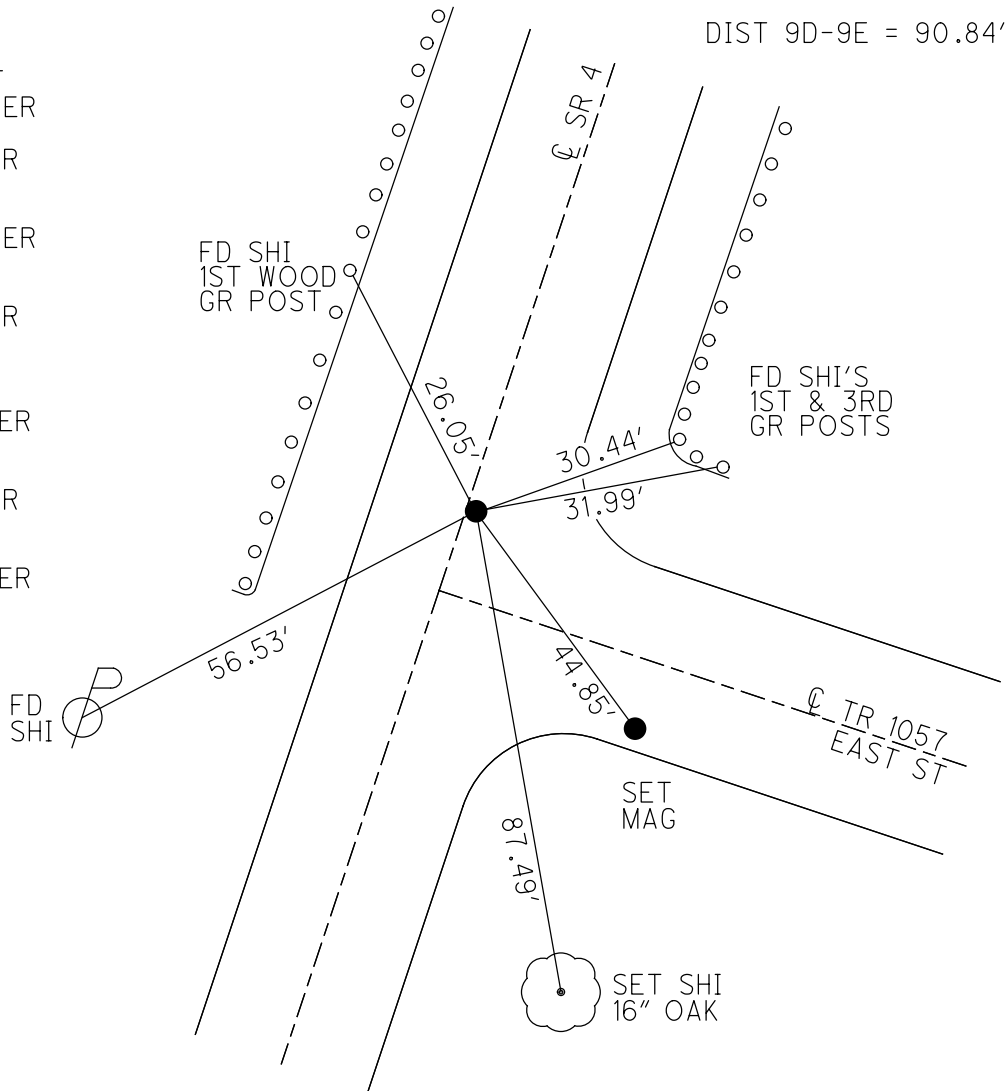
PERSONNEL	REFERENCE NO. <u>9 D</u>	SHEET <u>20</u> OF <u>56</u>
NOTES <u>RHOADES</u>	DATE <u>11/1/23</u>	ROUTE <u>SR 4</u>
H.C. <u>AUBLE</u>	WEATHER <u>SUNNY</u>	COUNTY <u>SENECA</u>
R.C. <u>MILLER</u>	TEMP. <u>36°</u>	TOWNSHIP <u>VENICE</u>
DWG BY <u>RHOADES</u>	PID <u>101241</u>	SECTION <u>10</u>
		T <u>1</u> N R <u>17</u> E

TYPE MONUMENT MAG/WASHER  
 ON SURFACE - ~~BELOW~~ ON  
 OFFSET  $\odot$  PAVEMENT 2.6' LT : RT  
8.4' TO RT EDGE PAVEMENT  
 STATION: 231+89.51



HORZ.DATUM: NAD83(2011) GEOID: NAVD88 2018  
 GRID: NORTHING: 505364.969 EASTING: 1860127.231

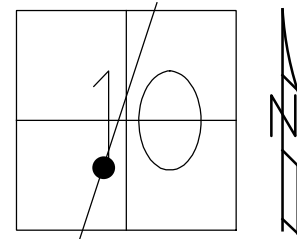
RECORD: P.I.  
 STA. 231+95.16  
 $\Delta = 03^\circ 49' \text{ LT}$   
 SET P.K./WASHER  
 12/18/1974  
 FD P.K./WASHER  
 SV118  
 9/15/09  
 SET P.K./WASHER  
 FIN 118  
 10/18/10 KPM  
 FD P.K./WASHER  
 9/15/21, DSA  
 D.N.F  
 2/8/22, JFO  
 SET MAG/WASHER  
 NEWREFD9  
 7/25/22, DSA  
 FD P.K./WASHER  
 REF9D  
 7/17/23, TDN  
 SET MAG/WASHER  
 11/1/23, DSA



O.D.O.T. DISTRICT 2 SURVEY OFFICE (USE ONLY)

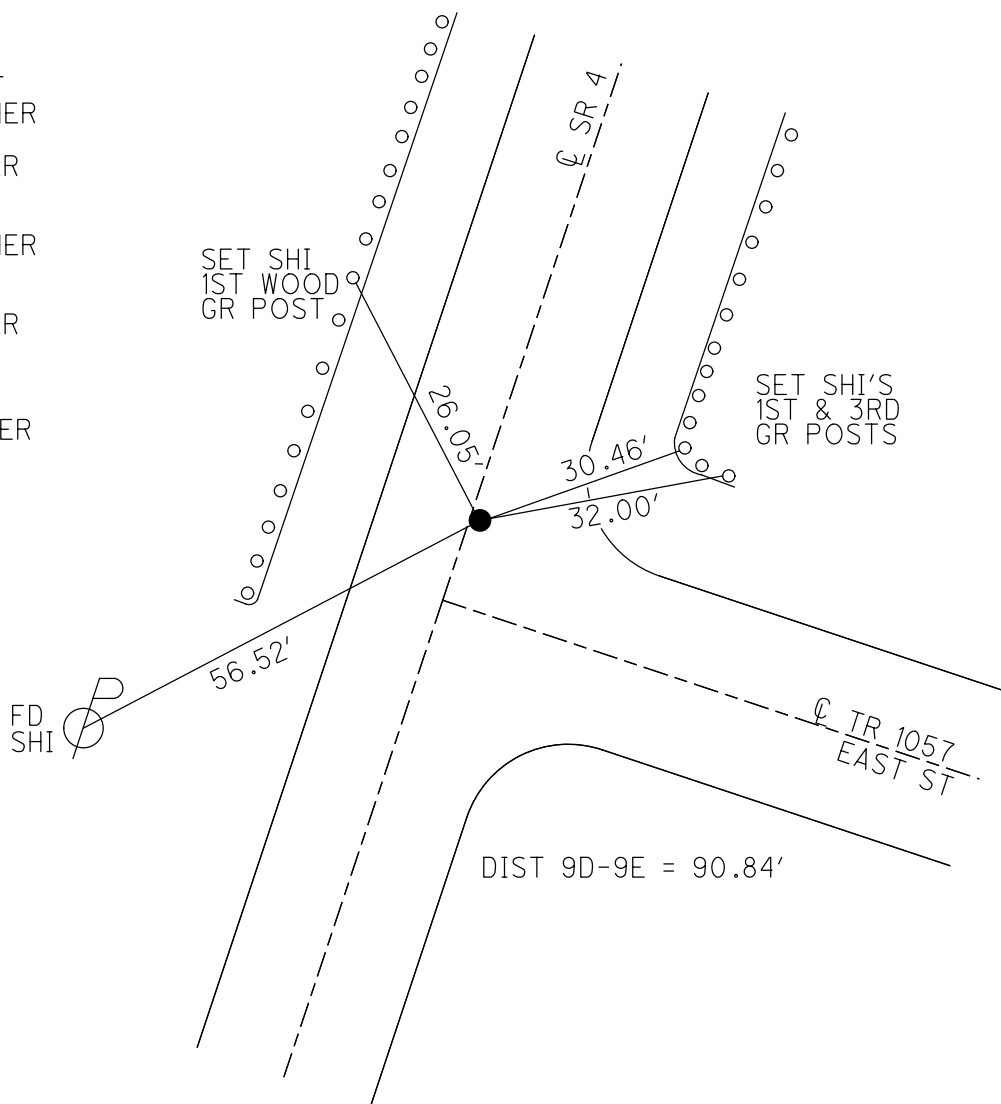
PERSONNEL \_\_\_\_\_ REFERENCE NO. 9 D SHEET 20 OF 41  
 NOTES NIESE DATE 9/15/21 ROUTE SR 4  
 H.C. AUBLE WEATHER OVERCAST COUNTY SENECA  
 R.C. NIESE TEMP. 66° TOWNSHIP VENICE  
 DWG BY WHITAKER PID PVTRN SECTION 10  
 T 1 N R 17 E

TYPE MONUMENT P.K./WASHER  
 ON SURFACE - ~~BELOW~~ ON  
 OFFSET 2.6' LT : RT  
8.4' TO RT EDGE PAVEMENT  
 STATION: 231+89.51



HORZ.DATUM: NAD83(2011) GEOID: NAVD88 2012A  
 GRID: NORTHING: 505364.952 EASTING: 1860127.200

RECORD: P.I.  
 STA. 231+95.16  
 $\Delta = 03^\circ 49' \text{ LT}$   
 SET P.K./WASHER  
 12/18/1974  
 FD P.K./WASHER  
 SV118  
 9/15/09  
 SET P.K./WASHER  
 FIN 118  
 10/18/10 KPM  
 FD P.K./WASHER  
 9/15/21, DSA  
 D.N.F.  
 2/8/22, JFO  
 SET MAG/WASHER  
 NEWREFD9  
 7/25/22, DSA



O.D.O.T. DISTRICT 2 SURVEY OFFICE (USE ONLY)

PERSONNEL

REFERENCE NO. 9 D

SHEET 20 OF 41

NOTES NIESE

DATE 8/11/10

ROUTE SR 4

H.C. AUBLE

WEATHER CLOUDY

COUNTY SENECA

R.C. NIESE

TEMP. 85°

TOWNSHIP VENICE

DWG BY RHOADES

PID 85242

SECTION 10

T 1 N R 17 E

TYPE MONUMENT P.K./WASHER

ON SURFACE - ~~BELOW~~ ON

OFFSET  $\text{C}$  PAVEMENT 2.6' ~~RT~~ : RT

8.4' TO RT EDGE PAVEMENT

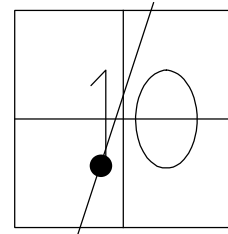
STATION: 231+89.51

HORZ.DATUM: NAD83(2011)

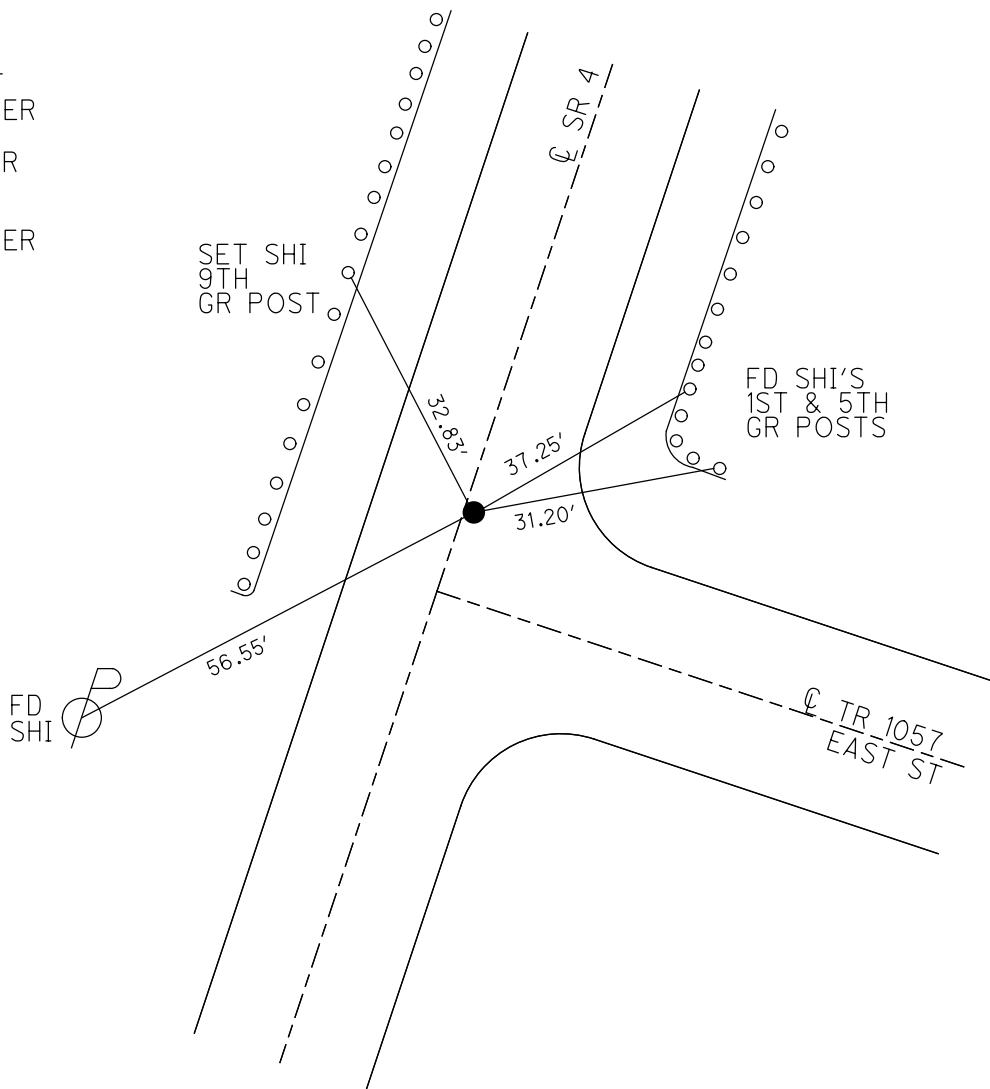
GEOID: NAVD88 2012A

GRID: NORTHING: 505364.952

EASTING: 1860127.200



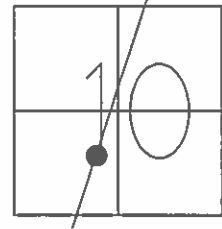
RECORD: P.I.  
 STA. 231+95.16  
 $\Delta = 03^\circ 49' \text{ LT}$   
 SET P.K./WASHER  
 12/18/1974  
 FD P.K./WASHER  
 SV118  
 9/15/09  
 SET P.K./WASHER  
 FIN 118  
 10/18/10 KPM



O.D.O.T. DISTRICT 2 SURVEY OFFICE (USE ONLY)

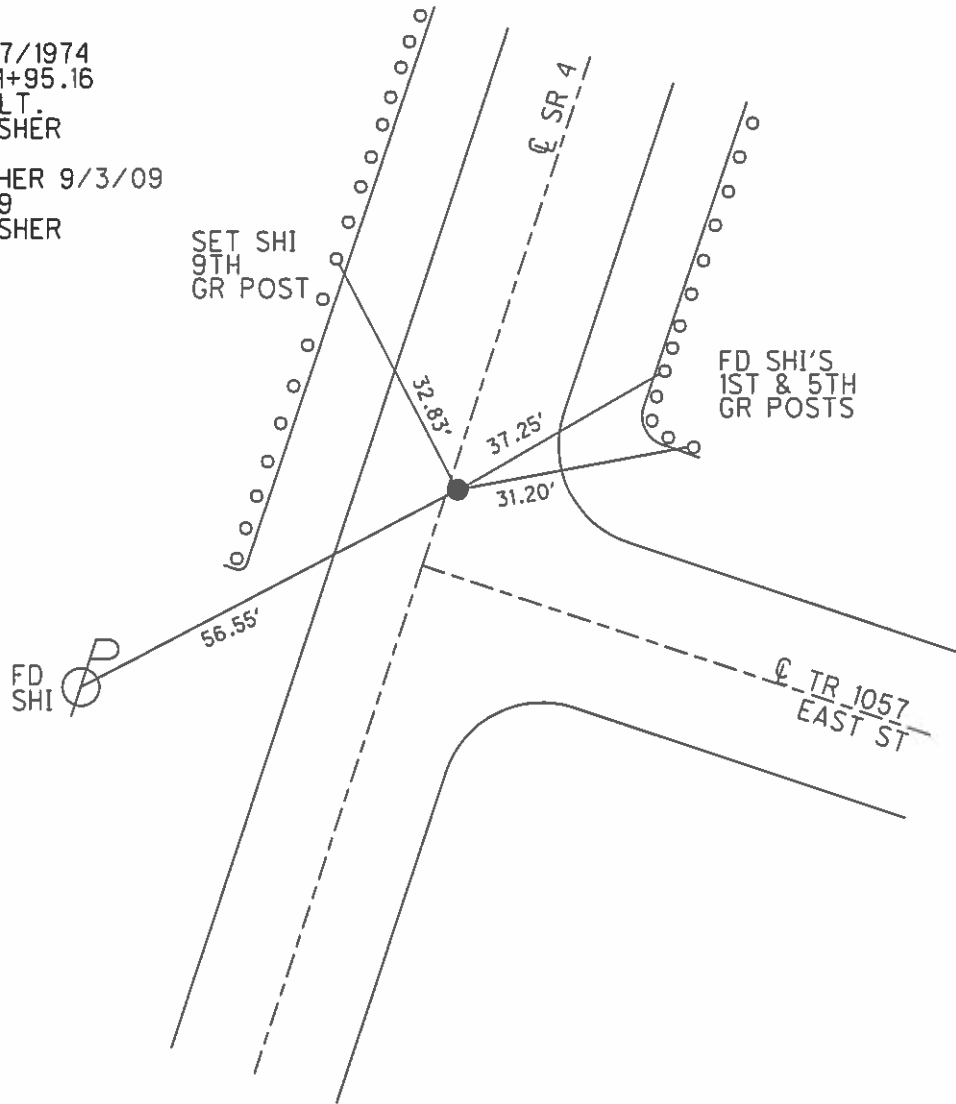
PERSONNEL	REFERENCE NO.	<u>9 D</u>	SHEET	<u>20</u>	OF	<u>41</u>
NOTES	FINTEL	DATE	<u>8/11/10</u>	ROUTE	<u>SR 4</u>	
H.C.	<u>HARBAUGH</u>	WEATHER	<u>CLOUDY</u>	COUNTY	<u>SENECA</u>	
R.C.	<u>FINTEL</u>	TEMP.	<u>85°</u>	TOWNSHIP	<u>VENICE</u>	
				SECTION	<u>10</u>	
				T	<u>1</u>	R
					<u>N</u>	<u>17</u>
					<u>E</u>	

TYPE MONUMENT P.K./WASHER  
 ON SURFACE - ~~BELOW~~ ON  
~~LEFT~~ - CL PAV'T - RIGHT 2.6'  
8.4' TO RT EDGE PAVEMENT  
 S.L.M. 231+89.51



GRID: NORTHING: 505364.952 EASTING: 1860127.200

RECORD: 12/17/1974  
 P.I. STA. 231+95.16  
 $\Delta = 03^\circ 49' \text{ LT.}$   
 SET P.K./WASHER  
 12/18/1974  
 FD P.K./WASHER 9/3/09  
 SV118 9/15/09  
 SET P.K./WASHER  
 GPS FIN 118  
 10/18/10 KPM



# O.D.O.T. DISTRICT 2 SURVEY OFFICE

PERSONNEL

REFERENCE NO. 9-D SHEET      OF     

NOTES BARNHISEL

H.C. CORDES

R.C. CANTERBURY

HUSS

DATE 11-14-96

WEATHER SUNNY

TEMP. +25°

ROUTE 4

COUNTY Seneca

TOWNSHIP VENICE

SECTION 10

T. 1 N. R. 17 E.

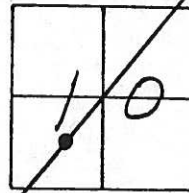
TYPE MONUMENT PK & WASHER

ON SURFACE - ~~BELOW~~ yes

~~LEFT~~ - & PAV'T. - RIGHT 2.2

13.1 TO LT EDGE PAVEMENT

S.L.M. 232+45



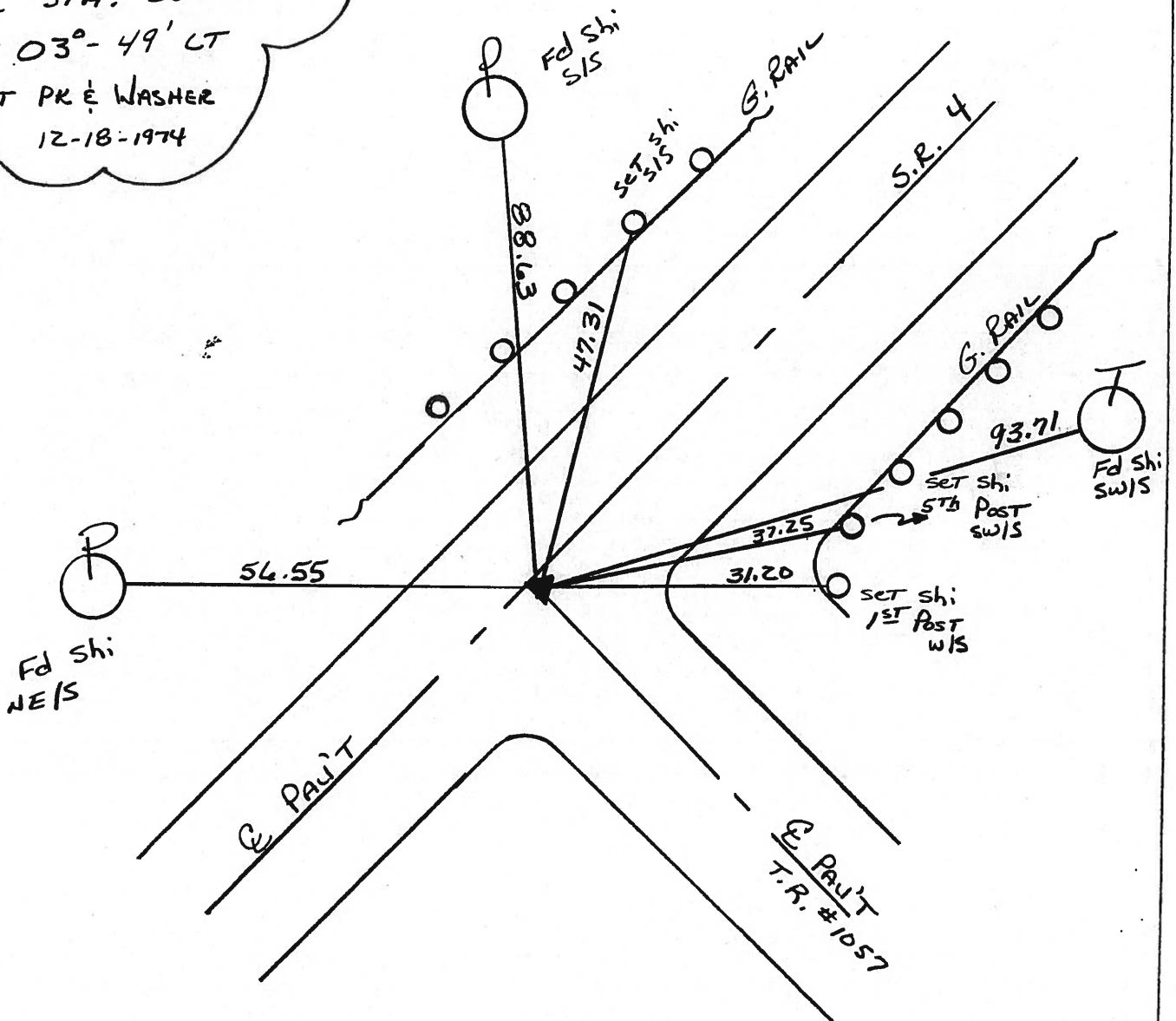
RECORD: 12-17-1974

PI STA: 231+95.16

$\Delta = 03^\circ - 49' \text{ LT}$

SET PK & WASHER

12-18-1974



# O.D.O.T. DISTRICT 2 SURVEY OFFICE

PERSONNEL

REFERENCE NO. 9-D

SHEET 18 OF 50

NOTES CHENEY

H.C. RIPPLE

R.C. BARBOUR

GREYMAN

DATE 7-26-1993

WEATHER FAIR

TEMP. 90°

ROUTE 4

COUNTY SENECA

TOWNSHIP VENICE

SECTION 10

T.H.R. 17E

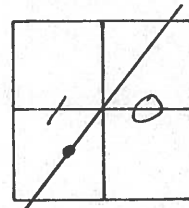
TYPE MONUMENT BROKEN-P.K.

~~ON~~ SURFACE - BELOW 4" ± BELOW

~~LEFT~~ - CL PAV'T. - RIGHT 1'

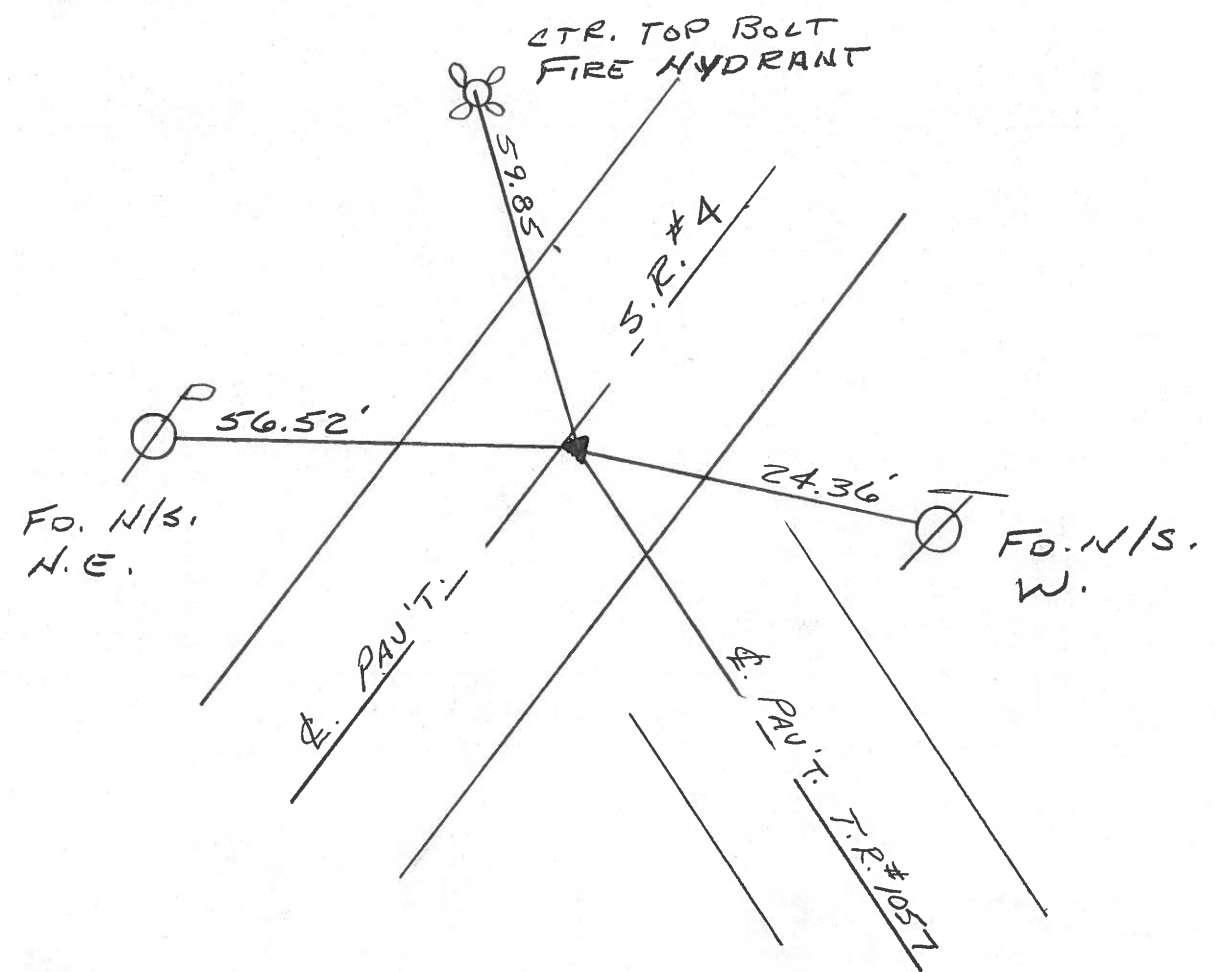
11.5' TO LT. EDGE PAVEMENT

S.L.M. 232+45



SET PK/WASHER  
 10-7-1993  
 RCC

RECORD: 12-17-1974  
P.I. STA. 231+95.16  
Δ = 03° 49' LT.  
(SET PK/WASHER)  
12-18-1974



PERSONNEL	TITLE	PERSONNEL	TITLE	COUNTY	DATE	WEATHER
Cronin				Seneca	12/17/74	overcast-snow
Ash				S. R. #4		
Ripple				SEC. Crawford Co. Line - North		TEMP. 32°
Geyman						

DESCRIPTION Ties for Control Points JOB NO. \_\_\_\_\_

