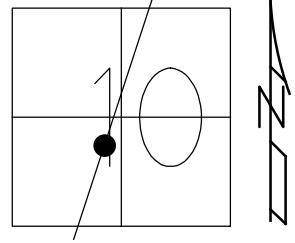


O.D.O.T. DISTRICT 2 SURVEY OFFICE (USE ONLY)

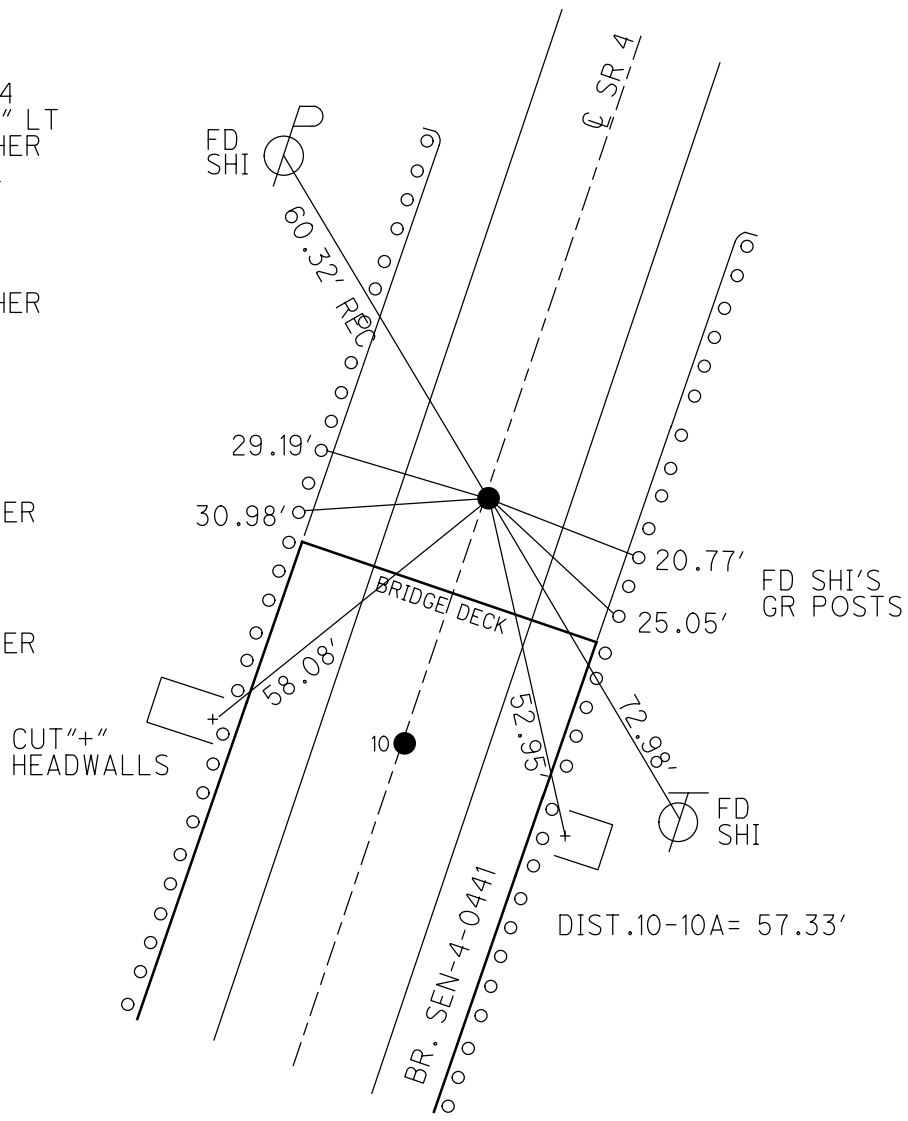
PERSONNEL _____ REFERENCE NO. 10 A SHEET 23 OF 56
 NOTES RHOADES DATE 11/1/23 ROUTE SR 4
 H.C. AUBLE WEATHER SUNNY COUNTY SENECA
 R.C. MILLER TEMP. 36° TOWNSHIP VENICE
 DWG BY RHOADES PID 101241 SECTION 10
 T 1 N R 17 E

TYPE MONUMENT MAG/WASHER
 ON SURFACE - ~~BELOW~~ ON _____
 OFFSET \odot PAVEMENT 1.9' \pm : RT
9.0' TO RT EDGE PAVEMENT
 STATION: 234+67.44



HORZ.DATUM: NAD83(2011) GEOID: NAVD88 2018
 GRID: NORTHING: 505620.792 EASTING: 1860233.533

RECORD: P.I.
 STA: 234+72+14
 $\Delta = 02^\circ 26' 12''$ LT
 SET P.K./WASHER
 ATOP P.K.NAIL
 12/18/74
 FD P.K.SHANK
 SV121
 9/15/09
 SET P.K./WASHER
 FIN 121
 10/18/10, KPM
 FD P.K. SHANK
 REFA10
 9/15/21, DSA
 D.N.F
 2/8/22, JFO
 SET MAG/WASHER
 REFA10
 7/25/22, DSA
 REF10A
 7/17/23, TDN
 SET MAG/WASHER
 11/1/23, DSA



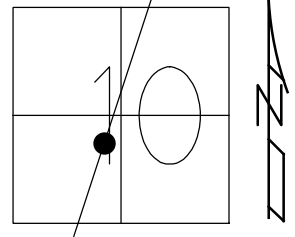
DIST.10-10A= 57.33'

O.D.O.T. DISTRICT 2 SURVEY OFFICE (USE ONLY)

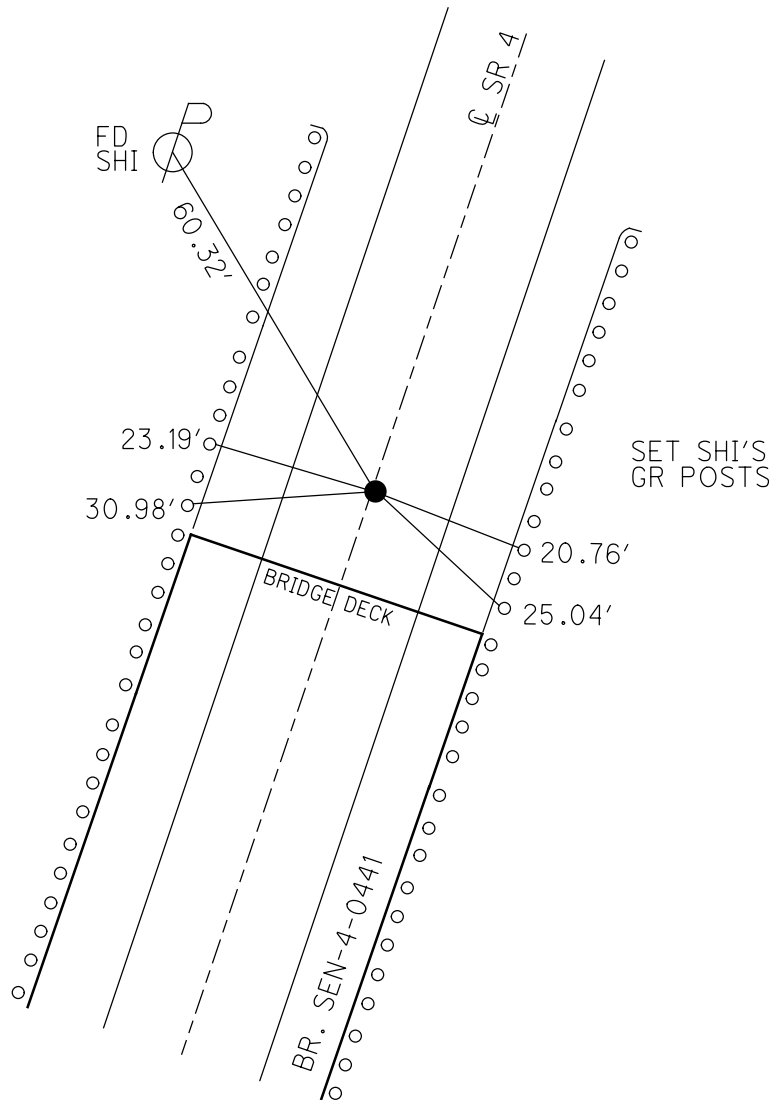
PERSONNEL _____ REFERENCE NO. 10 A SHEET 23 OF 41
 NOTES NIESE DATE 9/15/21 ROUTE SR 4
 H.C. AUBLE WEATHER OVERCAST COUNTY SENECA
 R.C. NIESE TEMP. 66° TOWNSHIP VENICE
 DWG BY WHITAKER PID PVTRN SECTION 10
 T 1 N R 17 E

TYPE MONUMENT P.K. SHANK
 ON SURFACE - ~~BELOW~~ ON
 OFFSET ☉ PAVEMENT 1.1' ~~±~~ : RT
9.0' TO RT EDGE PAVEMENT
 STATION: 234+67.44

HORZ. DATUM: NAD83(2011) GEOID: NAVD88 2012A
 GRID: NORTHING: 505620.802 EASTING: 1860233.532



RECORD: P.I.
 STA: 234+72+14
 $\Delta = 02^\circ 26' 12''$ LT
 SET P.K./WASHER
 ATOP P.K.NAIL
 12/18/74
 FD P.K.SHANK
 SV121
 9/15/09
 SET P.K./WASHER
 FIN 121
 10/18/10, KPM
 FD P.K. SHANK
 REFA10
 9/15/21, DSA
 D.N.F
 2/8/22, JFO
 SET MAG/WASHER
 REFA10
 7/25/22, DSA

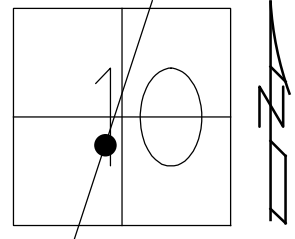


O.D.O.T. DISTRICT 2 SURVEY OFFICE (USE ONLY)

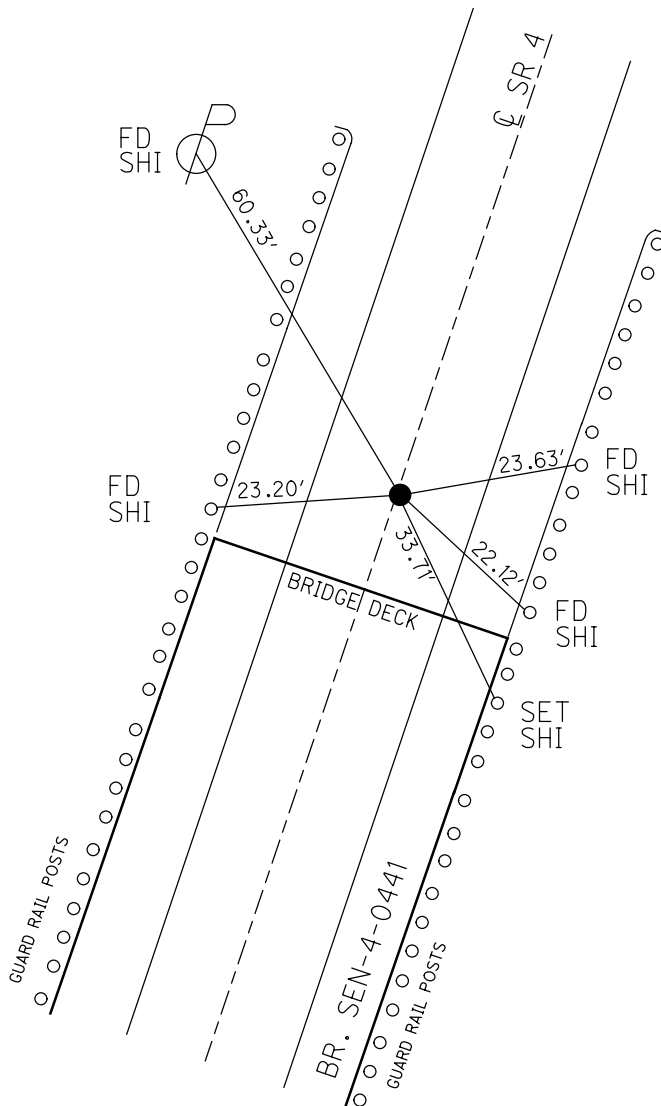
PERSONNEL _____ REFERENCE NO. 10 A SHEET 23 OF 41
 NOTES FINTEL DATE 8/12/10 ROUTE SR 4
 H.C. GOLDBERG WEATHER SUNNY COUNTY SENECA
 R.C. HARBAUGH TEMP. 83° TOWNSHIP VENICE
 DWG BY RHOADES PID 85242 SECTION 10
 T 1 N R 17 E

TYPE MONUMENT P.K./WASHER
 ON SURFACE - ~~BELOW~~ ON
 OFFSET Q PAVEMENT 1.1' ~~LT~~ : RT
9.0' TO RT EDGE PAVEMENT
 STATION: 234+67.44

HORZ.DATUM: NAD83(2011) GEOID: NAVD88 2012A
 GRID: NORTHING: 505620.802 EASTING: 1860233.532



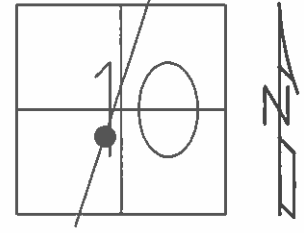
RECORD: P.I.
 STA: 234+72+14
 $\Delta = 02^\circ 26' 12''$ LT
 SET P.K./WASHER
 ATOP P.K.NAIL
 12/18/74
 FD P.K.SHANK
 SV121
 9/15/09
 SET P.K./WASHER
 FIN 121
 10/18/10, KPM



O.D.O.T. DISTRICT 2 SURVEY OFFICE (USE ONLY)

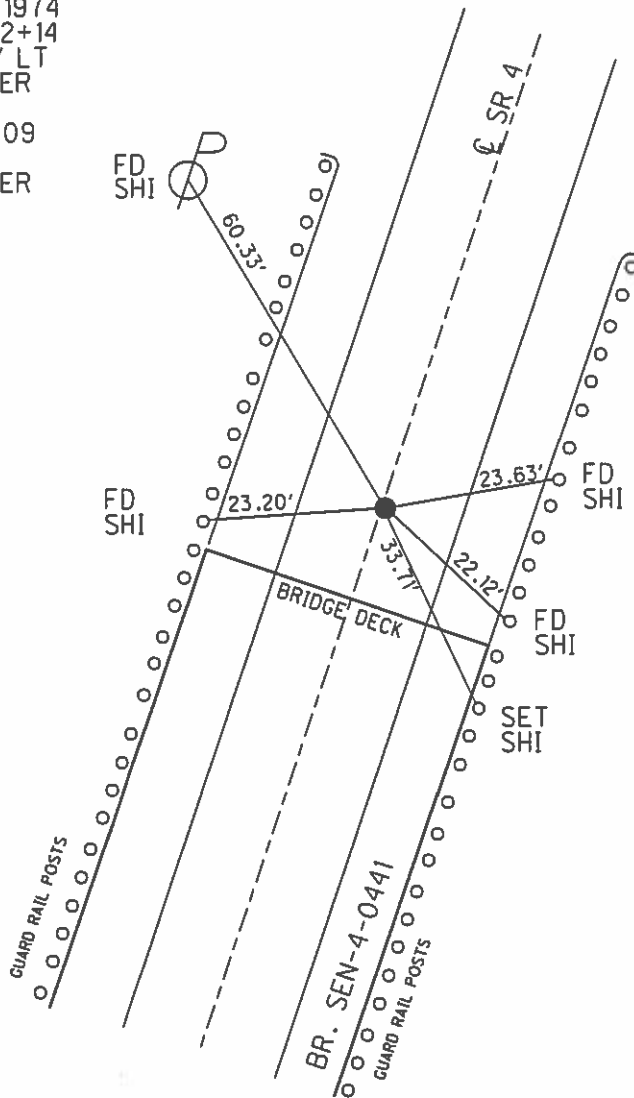
PERSONNEL	REFERENCE NO.	10 A	SHEET	23	OF	41
NOTES	DATE	8/12/10	ROUTE	SR 4		
H.C.	WEATHER	SUNNY	COUNTY	SENECA		
R.C.	TEMP.	83°	TOWNSHIP	VENICE		
			SECTION	10		
			T	1	N	R
					17	E

TYPE MONUMENT P.K./WASHER
 ON SURFACE - ~~BELOW~~ ON
~~LEFT~~ - C PAV'T - RIGHT 1.1'
9.0' TO RT EDGE PAVEMENT
 S.L.M. 234+67.44



GRID: NORTHING: 505620.802 EASTING: 1860233.532

RECORD: 12/18/1974
 P.I. STA: 234+72+14
 $\Delta = 02^\circ 26' 12''$ LT
 SET P.K./WASHER
 ATOP P.K.NAIL
 FD SHANK 9/3/09
 SV121 9/15/09
 SET P.K./WASHER
 GPS FIN 121
 10/18/10 KPM



O.D.O.T. DISTRICT 2 SURVEY OFFICE

PERSONNEL _____

REFERENCE NO. 10-A

SHEET _____ OF _____

NOTES BARNHISEL

H.C. CORDES

DATE 11-14-96

ROUTE 4

R.C. CANTERBURY

WEATHER SUNNY

COUNTY Seneca

HUSS

TEMP. +25°

TOWNSHIP VENICE

SECTION 10

T. 1 N. 17 E.

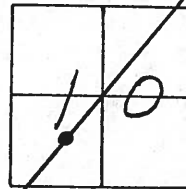
TYPE MONUMENT PK & WASHER

ON SURFACE - ~~BELOW~~ yes

~~SEE~~ - E PAV'T. - RIGHT 1.6

9.4 TO RT EDGE PAVEMENT

S.L.M. 235+23



Record: 12-18-1974
 P.I. STA: 234+72.14
 Δ = 02° 26' - 12" LT
 SET PK / WASHER
 ATOP PK NAIL



O.D.O.T. DISTRICT 2 SURVEY OFFICE

PERSONNEL

REFERENCE NO. 10-A

SHEET 21 OF 50

NOTES CHENEY

H.C. RIPPLE

R.C. BARBOUR

GEYMAN

DATE 7-27-1993

WEATHER FAIR

TEMP. 80°

ROUTE 4

COUNTY SENECA

TOWNSHIP VENICE

SECTION 10

T I N R I T E

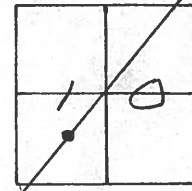
TYPE MONUMENT P.K. NAIL

~~ON~~ SURFACE - BELOW 3" ±

~~LEFT~~ - ~~Q~~ PAV'T. - RIGHT 1'

11' TO LT. EDGE PAVEMENT

S.L.M. 235+23



RECORD: 12-18-1974

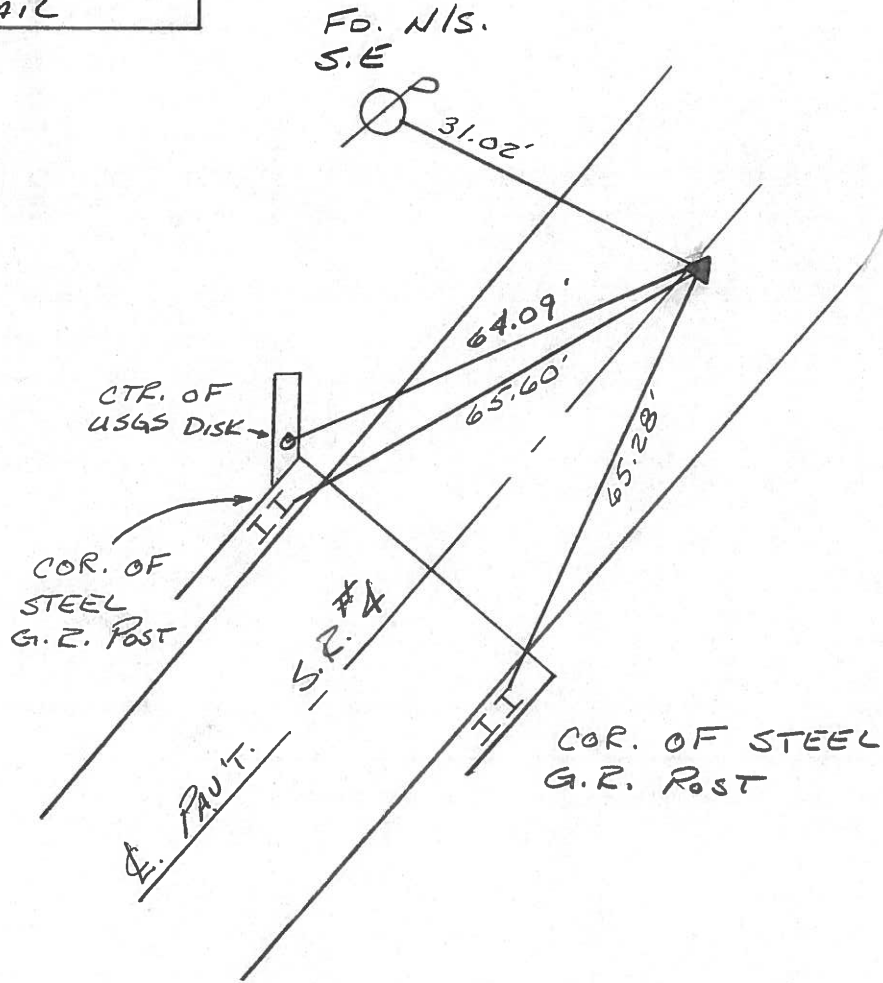
P.I. STA. 234+72.14

$\Delta = 02^{\circ} 26' 12''$ LT.

SET PK/WASHER

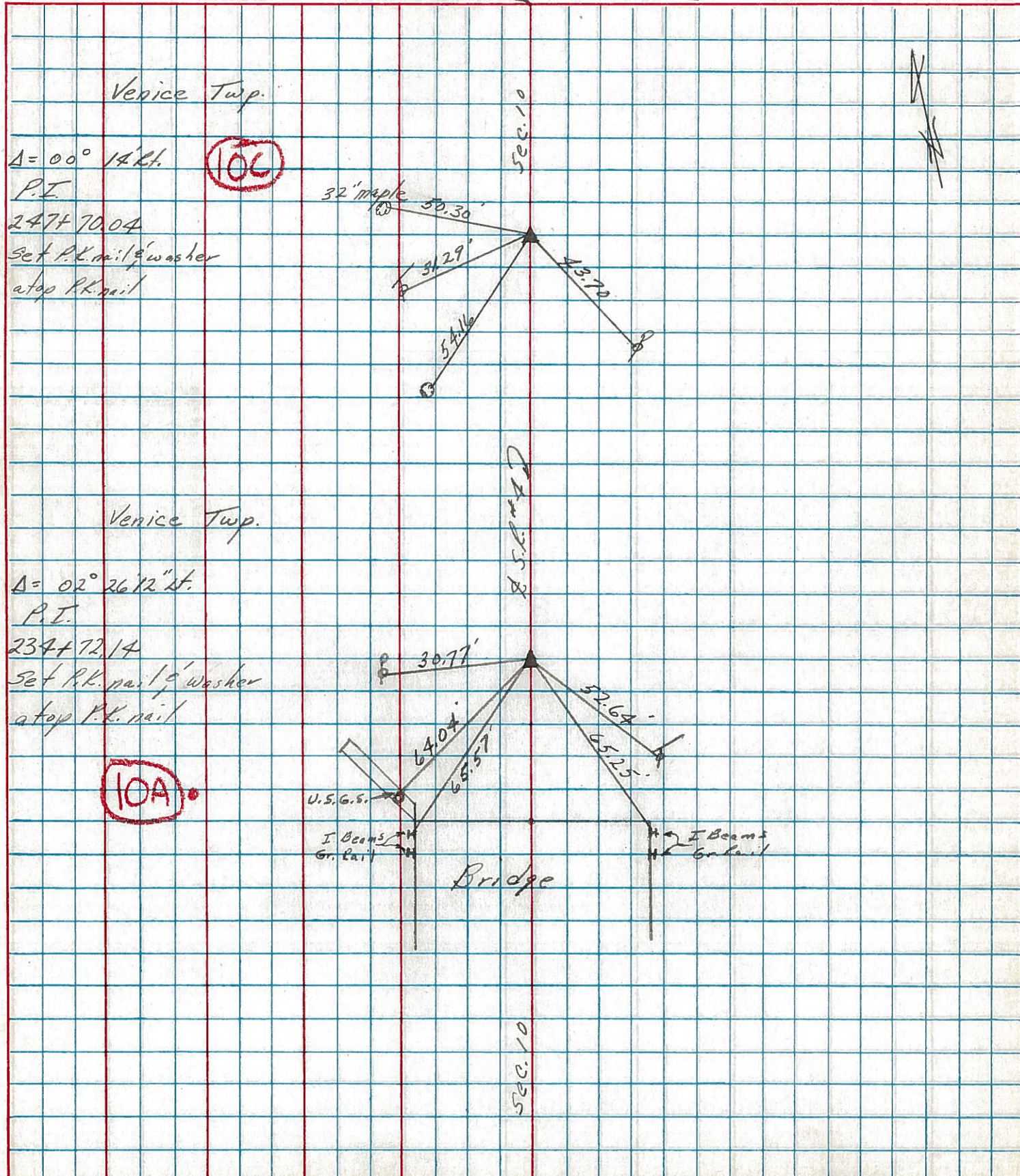
ATOP P.K. NAIL

SET PK/WASHER
 10-7-1993
 R.C.C



PERSONNEL	TITLE	PERSONNEL	TITLE	COUNTY	Seneca	DATE	12/18/74
Cronin		Schneider		S. R. #	4	WEATHER	overcast
Ash		Mosser		SEC.	Crawford Co. Line-North	TEMP.	25°
Ripple		Barbour					
Geyman							

DESCRIPTION Ties for Control Points JOB NO. _____



PERSONNEL TITLE PERSONNEL TITLE

Schneider Potts

COUNTY Seneca DATE 10-1-68

Mosser

S. R. 4 WEATHER Fair

Barbour

SEC. _____ TEMP. 70°

Redding

DESCRIPTION Ties for Control Points JOB NO. _____

LEFT

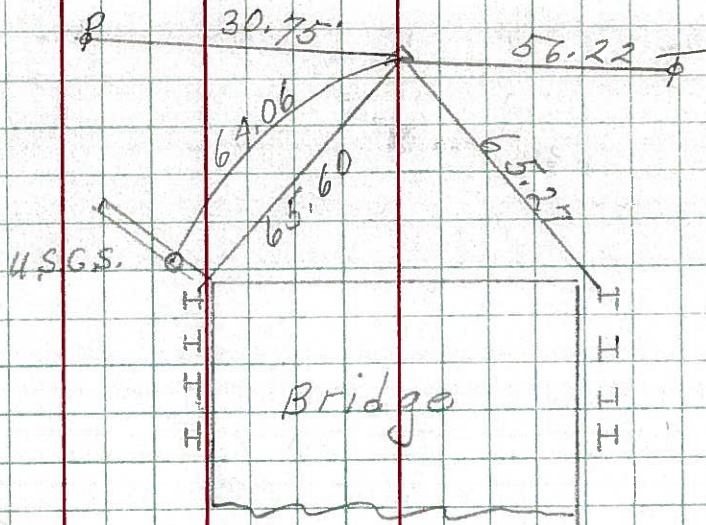
CENTER LINE

RIGHT

10A

234+72.14
 $\Delta = 2^{\circ} 26' 12''$ Lt
 P. K. Nail

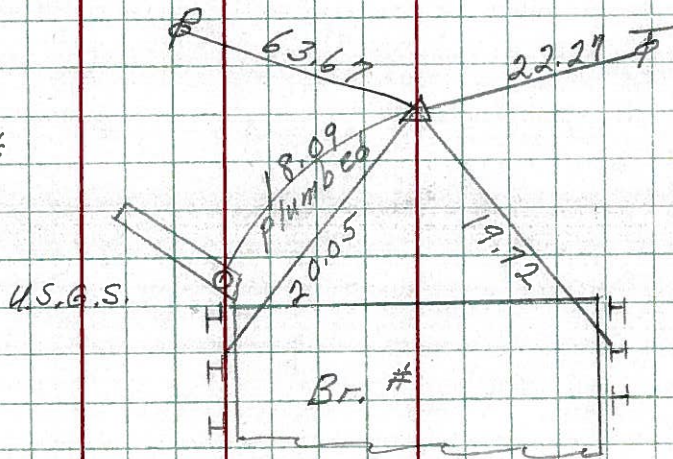
8019



10

234+14.95
 $\Delta = 0^{\circ} 02' 18''$ Lt
 P. K. Nail

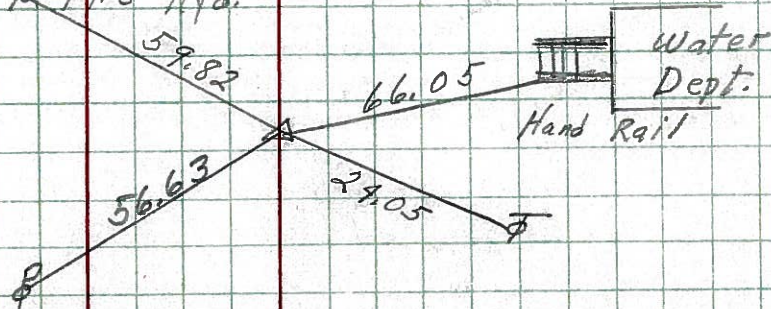
8018



center top bolt
 A Fire Hyd.

231+95.16
 $\Delta = 3^{\circ} 49' 14''$ Lt
 P. K. Nail

8017



PERSONNEL TITLE PERSONNEL TITLE
 Schneider _____ Potts _____
 Mosser _____
 Barbour _____
 Redding _____

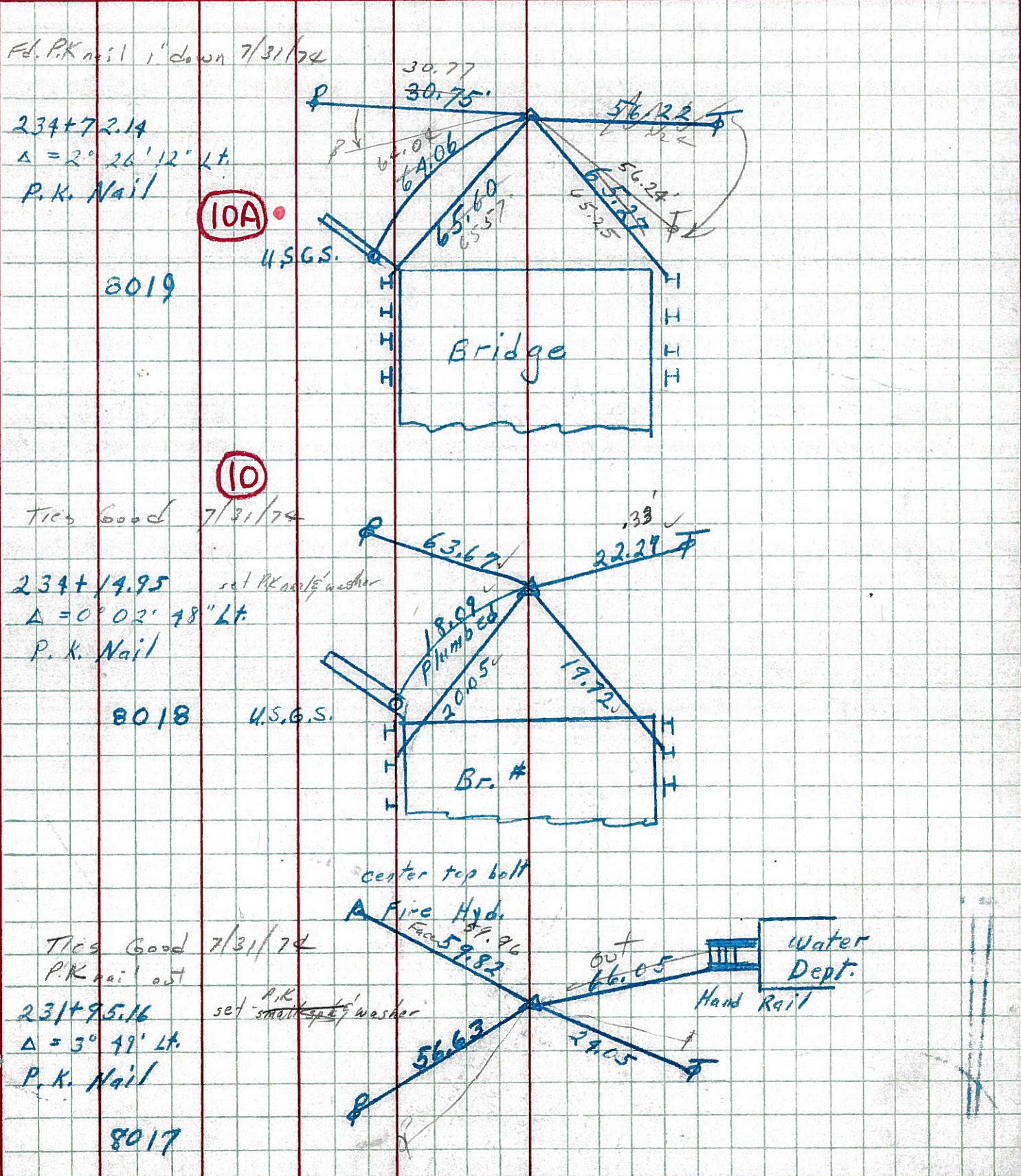
COUNTY Seneca DATE 10-1-68

S. R. 4 WEATHER Fair

SEC. _____ TEMP. 70°

DESCRIPTION Ties for Control Points JOB NO. _____

LEFT CENTER LINE RIGHT



PERSONNEL	TITLE	PERSONNEL	TITLE	COUNTY	DATE
KrABILL				Seneca	
Kowaleski				S. R. 4	WEATHER
Brooks				SEC.	TEMP.

DESCRIPTION	LEFT	CENTER LINE	RIGHT	JOB NO.
-------------	------	-------------	-------	---------

