

O.D.O.T. DISTRICT 2 SURVEY OFFICE (USE ONLY)

PERSONNEL

REFERENCE NO. 10 B

SHEET 24 OF 56

NOTES RHOADES

DATE 11/1/23

ROUTE SR 4

H.C. AUBLE

WEATHER SUNNY

COUNTY SENECA

R.C. MILLER

TEMP. 36°

TOWNSHIP VENICE

SECTION 10

DWG BY RHOADES

PID 101241

T 1 N R 17 E

TYPE MONUMENT MAG/WASHER

ON SURFACE - ~~BELOW~~ ON

OFFSET C PAVEMENT 0.6' ~~LT~~ : RT

11.9' TO LT EDGE PAVEMENT

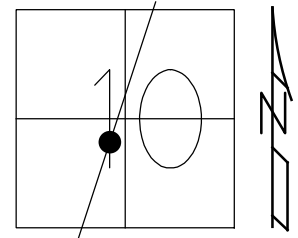
STATION: 235+70.89

HORZ.DATUM: NAD83(2011)

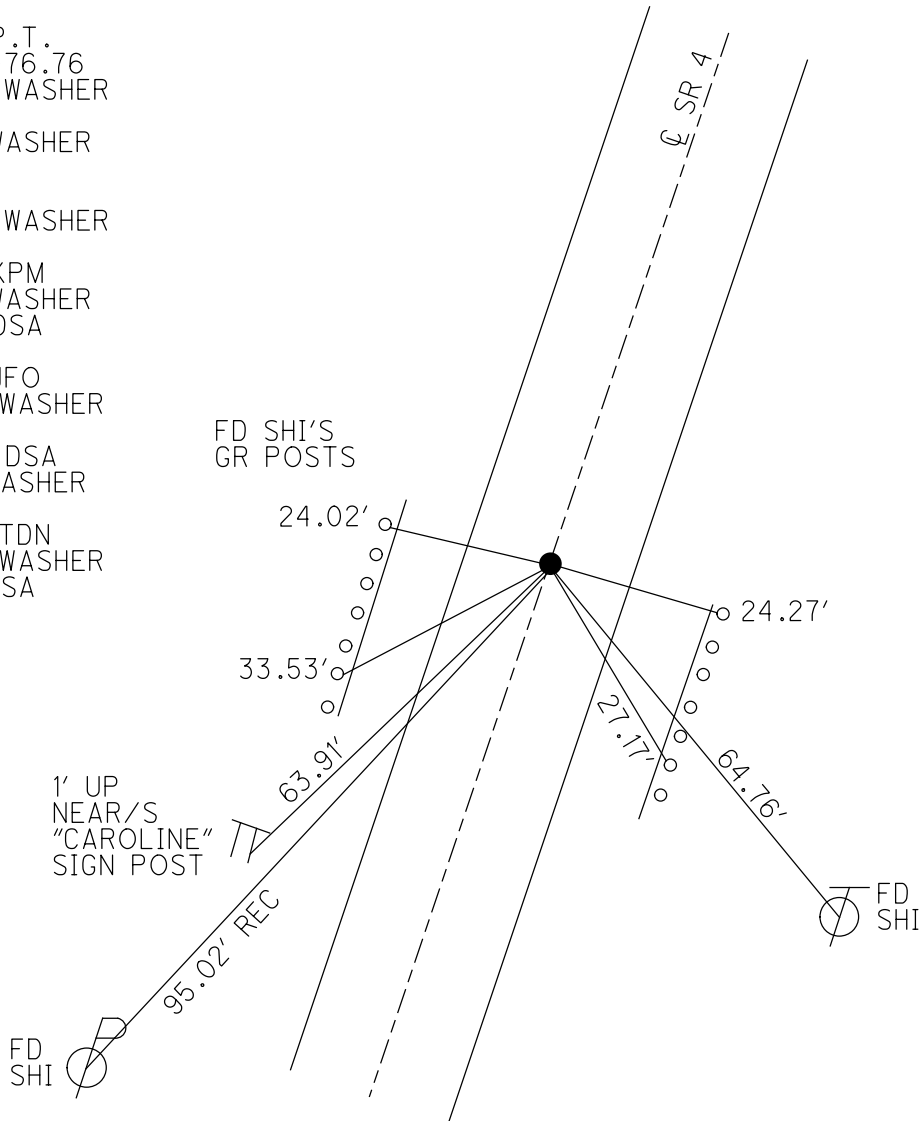
GEOID: NAVD88 2018

GRID: NORTHING: 505718.236

EASTING: 1860268.198



RECORD: P.T.
 STA: 235+76.76
 SET P.K./WASHER
 3/16/92
 FD P.K./WASHER
 SV122
 9/15/09
 SET P.K./WASHER
 FIN 122
 10/18/10 KPM
 FD P.K./WASHER
 9/15/21, DSA
 D.N.F
 2/8/22, JFO
 SET MAG/WASHER
 REFB10
 7/25/22, DSA
 FD MAG/WASHER
 REF10B
 7/17/23, TDN
 SET MAG/WASHER
 11/1/23, DSA



O.D.O.T. DISTRICT 2 SURVEY OFFICE (USE ONLY)

PERSONNEL

REFERENCE NO. 10 B

SHEET 24 OF 41

NOTES NIESE

DATE 9/15/21

ROUTE SR 4

H.C. AUBLE

WEATHER OVERCAST

COUNTY SENECA

R.C. NIESE

TEMP. 66°

TOWNSHIP VENICE

SECTION 10

DWG BY WHITAKER

PID PVTRN

T 1 N R 17 E

TYPE MONUMENT P.K./WASHER

ON SURFACE - ~~BELOW~~ ON

OFFSET ☉ PAVEMENT ON LT : RT

11.9' TO LT EDGE PAVEMENT

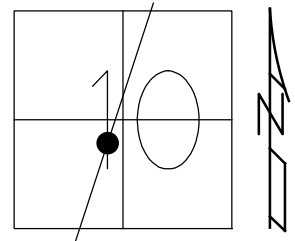
STATION: 235+70.89

HORZ.DATUM: NAD83(2011)

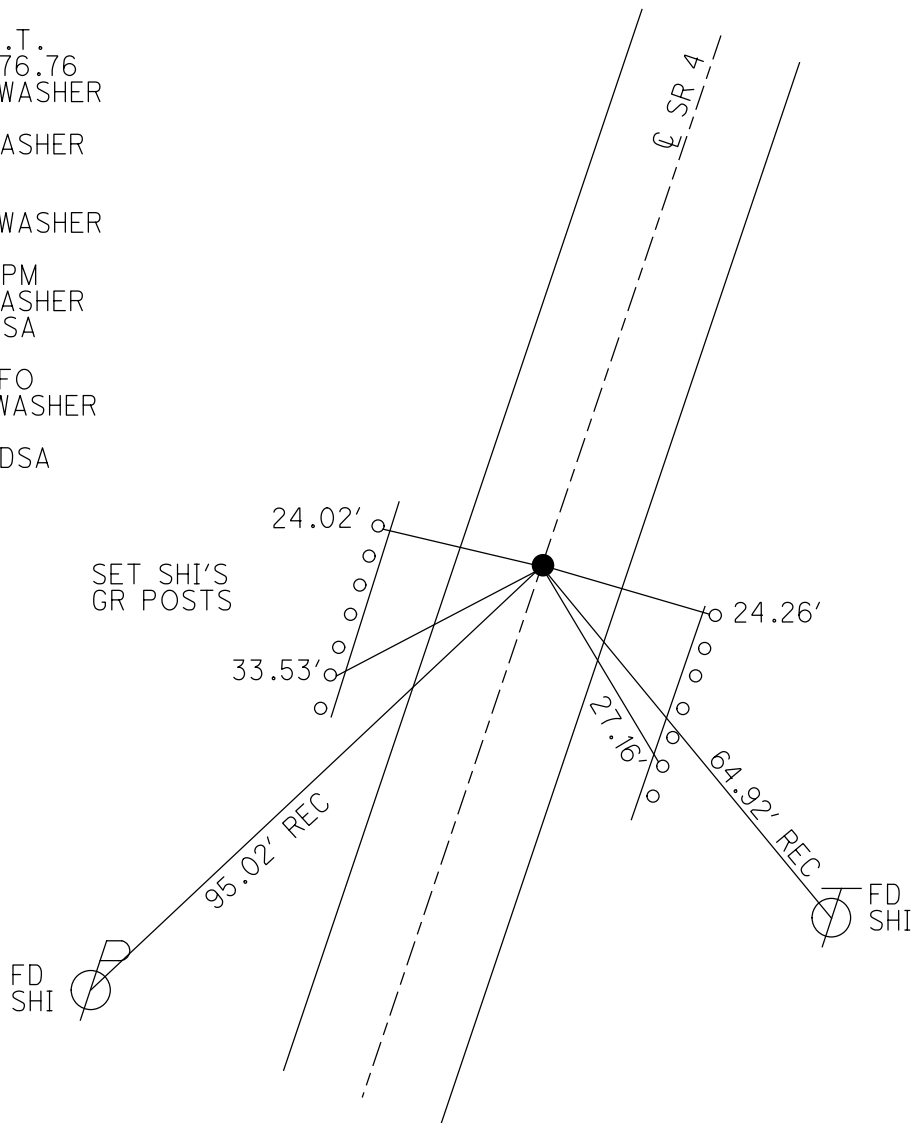
GEOID: NAVD88 2012A

GRID: NORTHING: 505718.296

EASTING: 1860268.148



RECORD: P.T.
 STA: 235+76.76
 SET P.K./WASHER
 3/16/92
 FD P.K./WASHER
 SV122
 9/15/09
 SET P.K./WASHER
 FIN 122
 10/18/10 KPM
 FD P.K./WASHER
 9/15/21, DSA
 D.N.F
 2/8/22, JFO
 SET MAG/WASHER
 REFB10
 7/25/22, DSA



O.D.O.T. DISTRICT 2 SURVEY OFFICE (USE ONLY)

PERSONNEL

REFERENCE NO. 10 B

SHEET 24 OF 41

NOTES FINTEL

DATE 8/12/10

ROUTE SR 4

H.C. GOLDBERG

WEATHER SUNNY

COUNTY SENECA

R.C. HARBAUGH

TEMP. 83°

TOWNSHIP VENICE

DWG BY RHOADES PID 85242

SECTION 10

T 1 N R 17 E

TYPE MONUMENT P.K./WASHER

ON SURFACE - ~~BELOW~~ ON

OFFSET Q PAVEMENT ON LT : RT

11.9' TO LT EDGE PAVEMENT

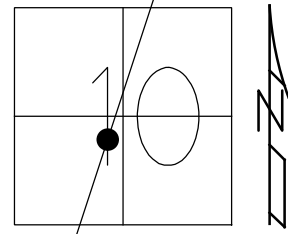
STATION: 235+70.89

HORZ.DATUM: NAD83(2011)

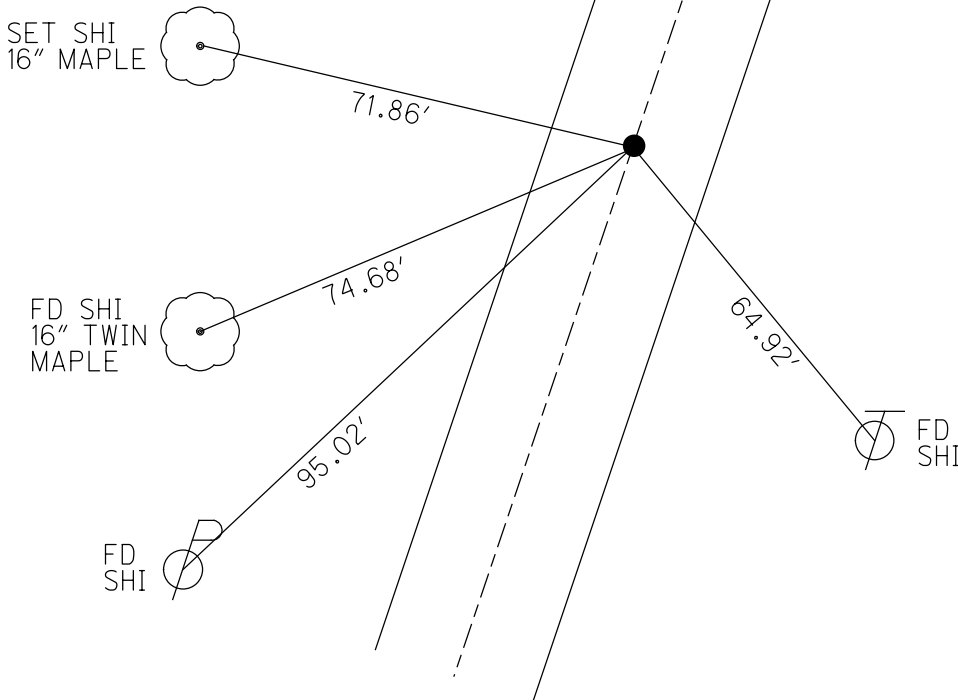
GEOID: NAVD88 2012A

GRID: NORTHING: 505718.296

EASTING: 1860268.148



RECORD: P.T.
STA: 235+76.76
SET P.K./WASHER
3/16/92
FD P.K./WASHER
SV122
9/15/09
SET P.K./WASHER
FIN 122
10/18/10 KPM

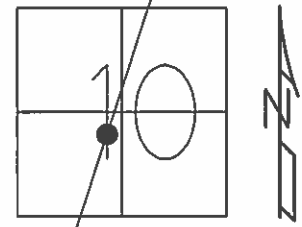


O.D.O.T. DISTRICT 2 SURVEY OFFICE (USE ONLY)

PERSONNEL _____ REFERENCE NO. 10 B SHEET 24 OF 41

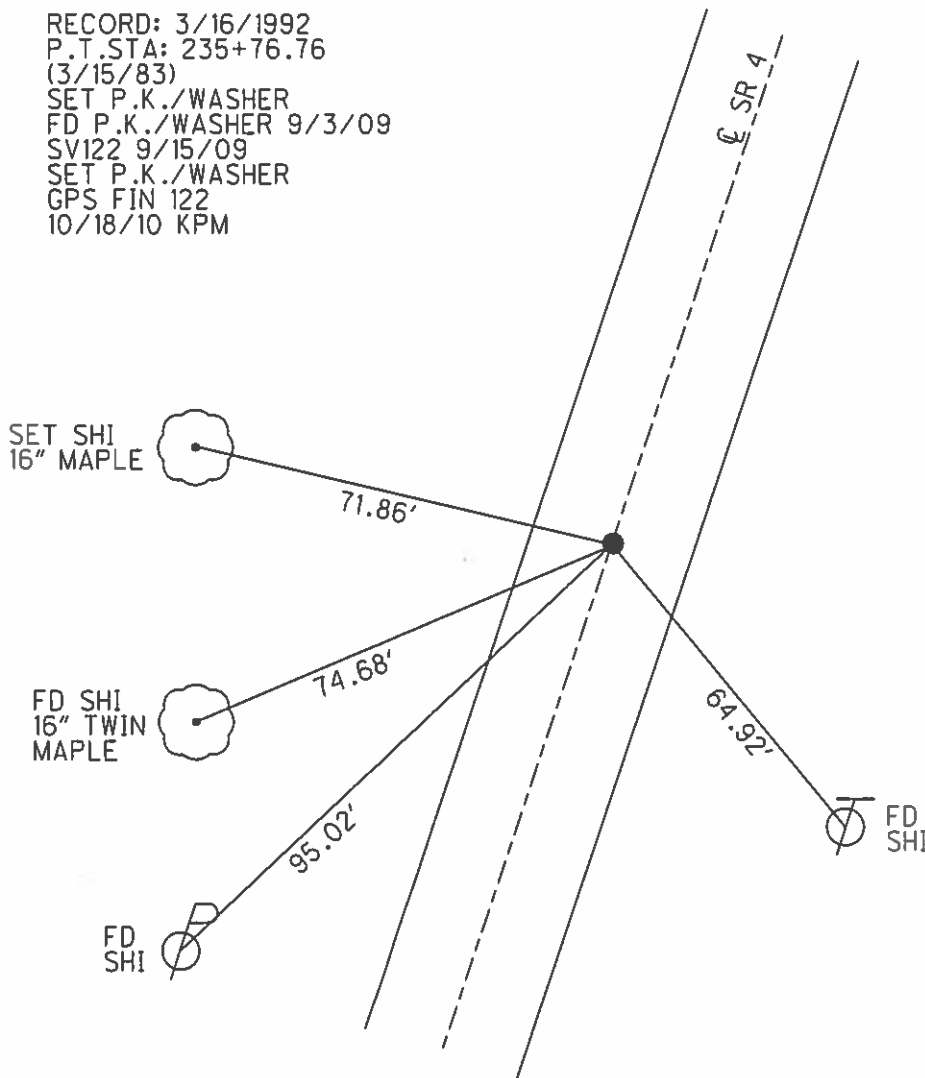
NOTES FINTEL DATE 8/12/10 ROUTE SR 4
 H.C. GOLDBERG WEATHER SUNNY COUNTY SENECA
 R.C. HARBAUGH TEMP. 83° TOWNSHIP VENICE
 _____ SECTION 10
 _____ T 1 N R 17 E

TYPE MONUMENT P.K./WASHER
 ON SURFACE - ~~BELOW~~ ON
 LEFT - ☉ PAV'T - RIGHT ON
11.9' TO LT EDGE PAVEMENT
 S.L.M. 235+70.89



GRID: NORTHING: 505718.296 EASTING: 1860268.148

RECORD: 3/16/1992
 P.T. STA: 235+76.76
 (3/15/83)
 SET P.K./WASHER
 FD P.K./WASHER 9/3/09
 SV122 9/15/09
 SET P.K./WASHER
 GPS FIN 122
 10/18/10 KPM



O.D.O.T. DISTRICT 2 SURVEY OFFICE

PERSONNEL _____

REFERENCE NO. _____

SHEET 4 OF 4

NOTES VAN DUSEN PC

H.C. LUCE

DATE MARCH 16, 1997

ROUTE 4

R.C. BARNHISEL

WEATHER NICE

COUNTY SENECA

LONG

TEMP. 32°F

TOWNSHIP VENICE

ROMETO

SECTION 10

T. 1 N. R 17 E

TYPE MONUMENT PK

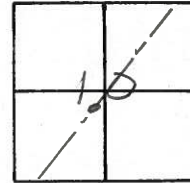
ON SURFACE - BELOW SURFACE

LEFT - & PAV'T. - RIGHT E

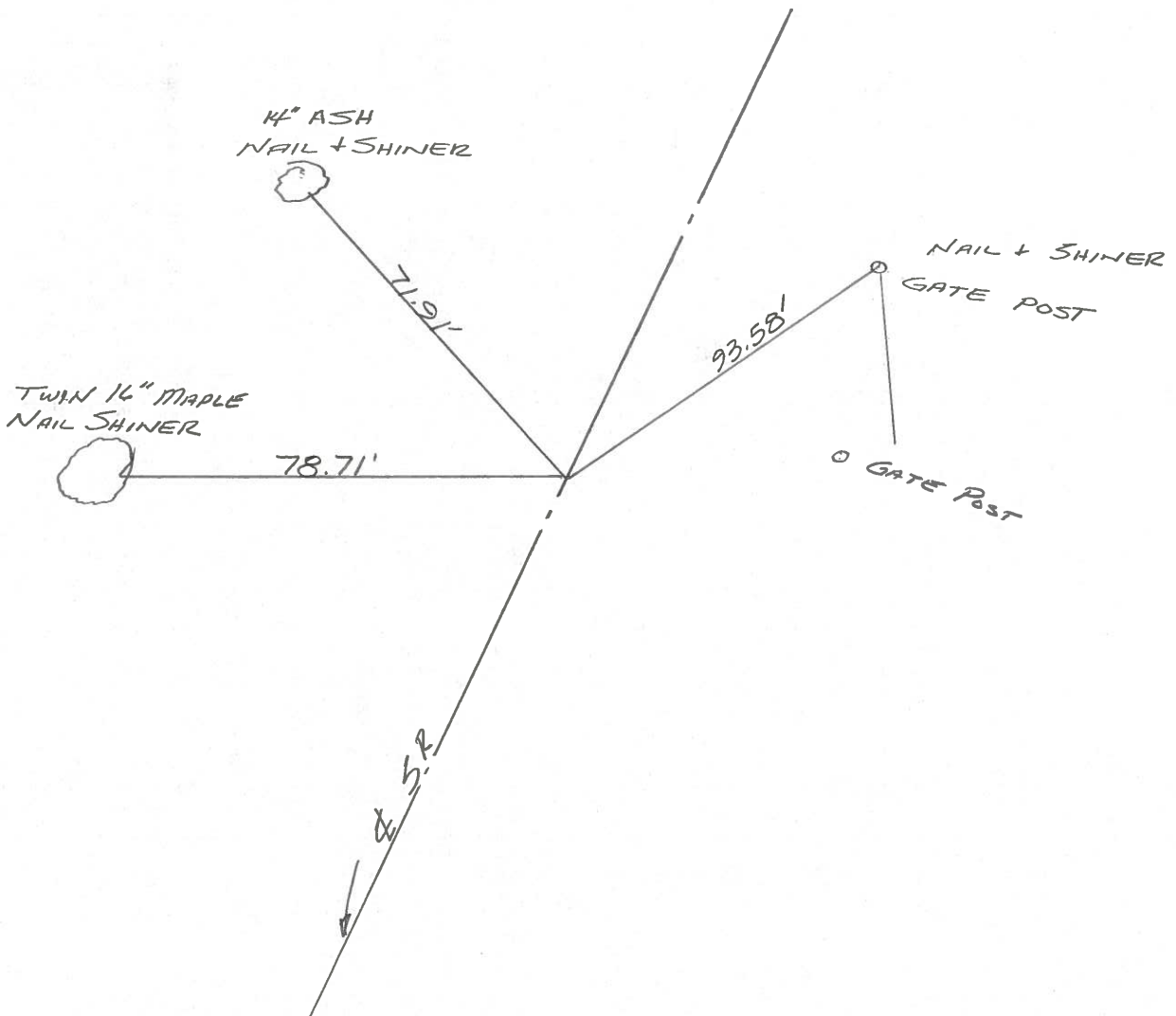
TO EDGE PAVEMENT

S.L.M. PT R35+76.76

10B



FD. PK



O.D.O.T. DISTRICT 2 SURVEY OFFICE

PERSONNEL

REFERENCE NO. 10-B

SHEET _____ OF _____

NOTES BARNHISEL

H.C. CORDES

DATE 11-14-96

ROUTE 4

R.C. CANTERBURY

WEATHER SUNNY

COUNTY Seneca

HUSS

TEMP. +25°

TOWNSHIP VENICE

SECTION 10

T. 1 N. R 17 E

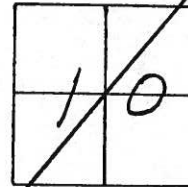
TYPE MONUMENT PK & WASHER

ON SURFACE - ~~BELOW~~ yes

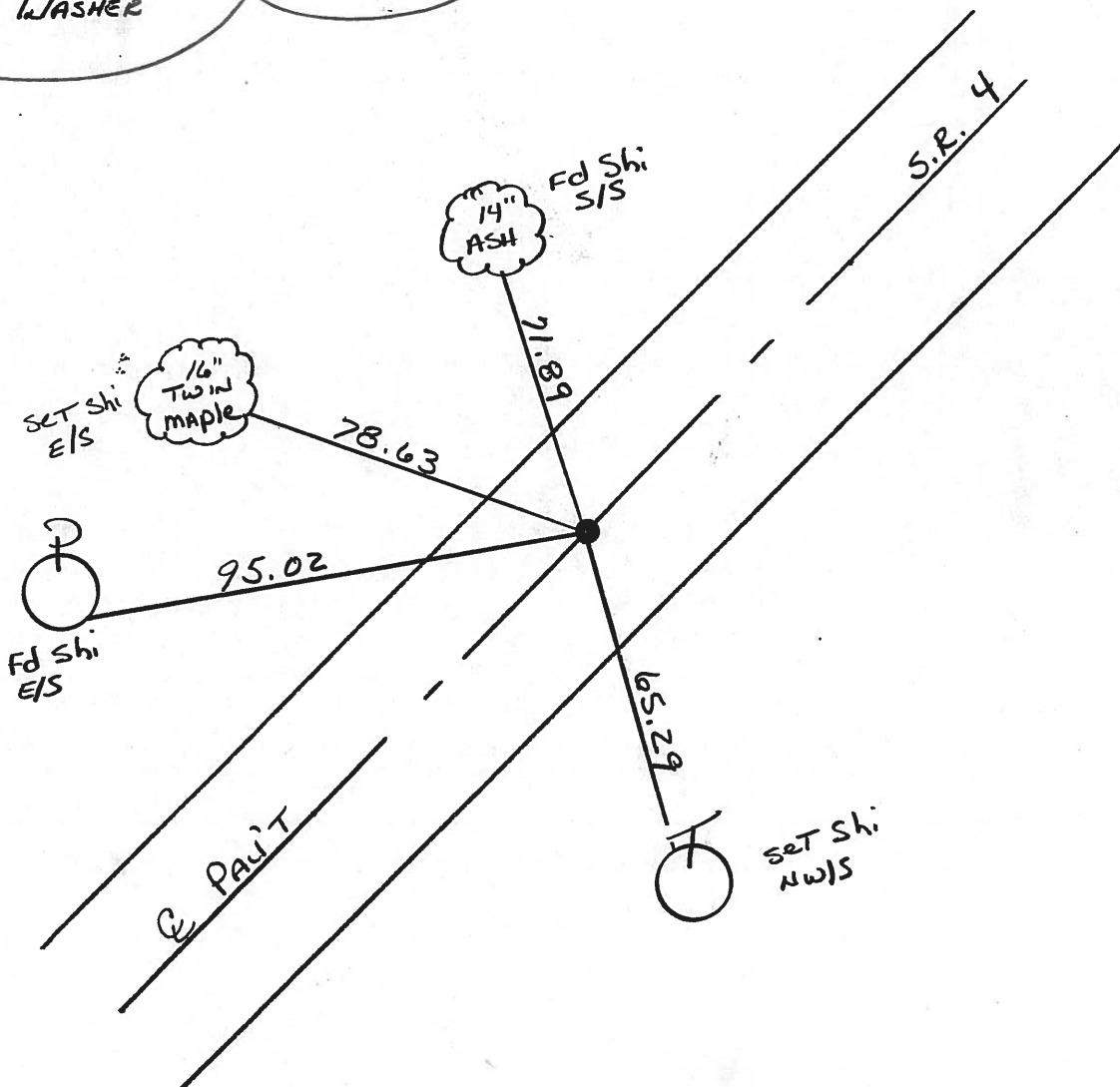
~~LEFT~~ - RIGHT PAV'T. - yes

10.0 TO LT EDGE PAVEMENT

S.L.M. 236+27



Record : 3-16-1992
 P.T. STA 235+76.76 (3-15-1983)
 SET PK & WASHER



O.D.O.T. DISTRICT 2 SURVEY OFFICE

PERSONNEL

REFERENCE NO. 10-B

SHEET 22 OF 50

NOTES CHENEY

H.C. RIPPLE

R.C. BARBOUR

GEYMAI

DATE 7-26-1993

WEATHER FAIR

TEMP. 90°

ROUTE #4

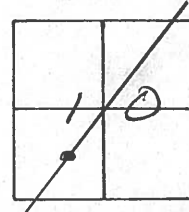
COUNTY SENECA

TOWNSHIP VENICE

SECTION 10

T I N R I T E

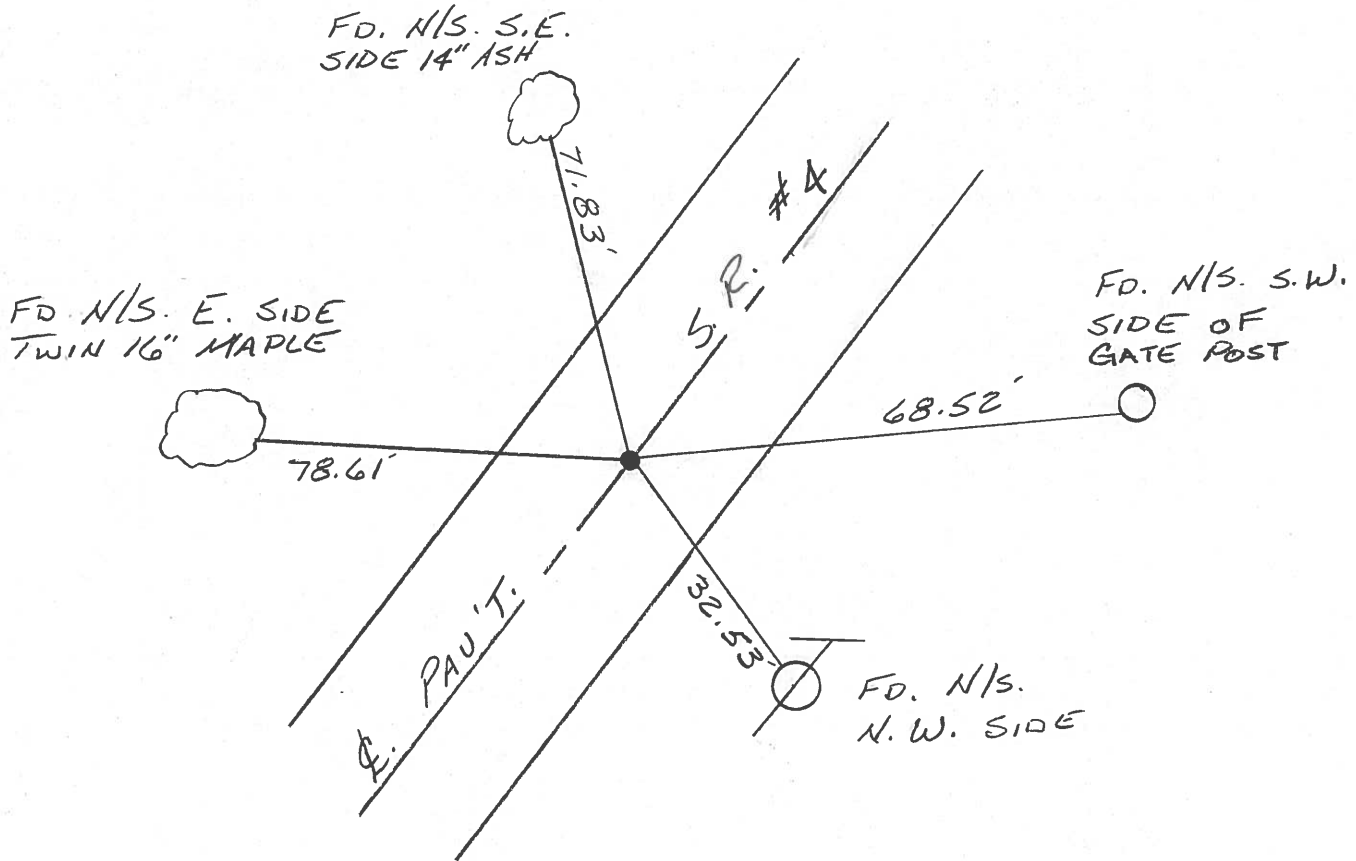
TYPE MONUMENT PK/WASHER
 ON SURFACE - ~~BELOW~~ ON
~~LEFT~~ - RIGHT PAV'T. - ON
10' TO LT. EDGE PAVEMENT
 S.L.M. 236+27



RECORDED: 3-16-1992

P.T. STA. 235+76.76 (3-15-1983)
 SET PK/WASHER
 FD. P.K.

SET PK/WASHER
 10-7-1993
 RCC



O.D.O.T. DISTRICT 2 SURVEY OFFICE

PERSONNEL _____

REFERENCE NO. _____

SHEET 4 OF 5

NOTES CHENEY

H.C. RIPPLE

R.C. CHENEY

DATE 9-25-1991

WEATHER SUNNY

TEMP. 65°

ROUTE 4

COUNTY SENECA

TOWNSHIP VENICE

SECTION 10

TIN R18E

TYPE MONUMENT ^{FD.} PK/WASHER

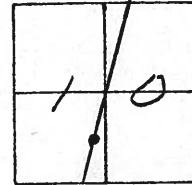
ON SURFACE - ~~BELOW~~ _____

~~LEFT~~ - C PAV'T. - RIGHT _____

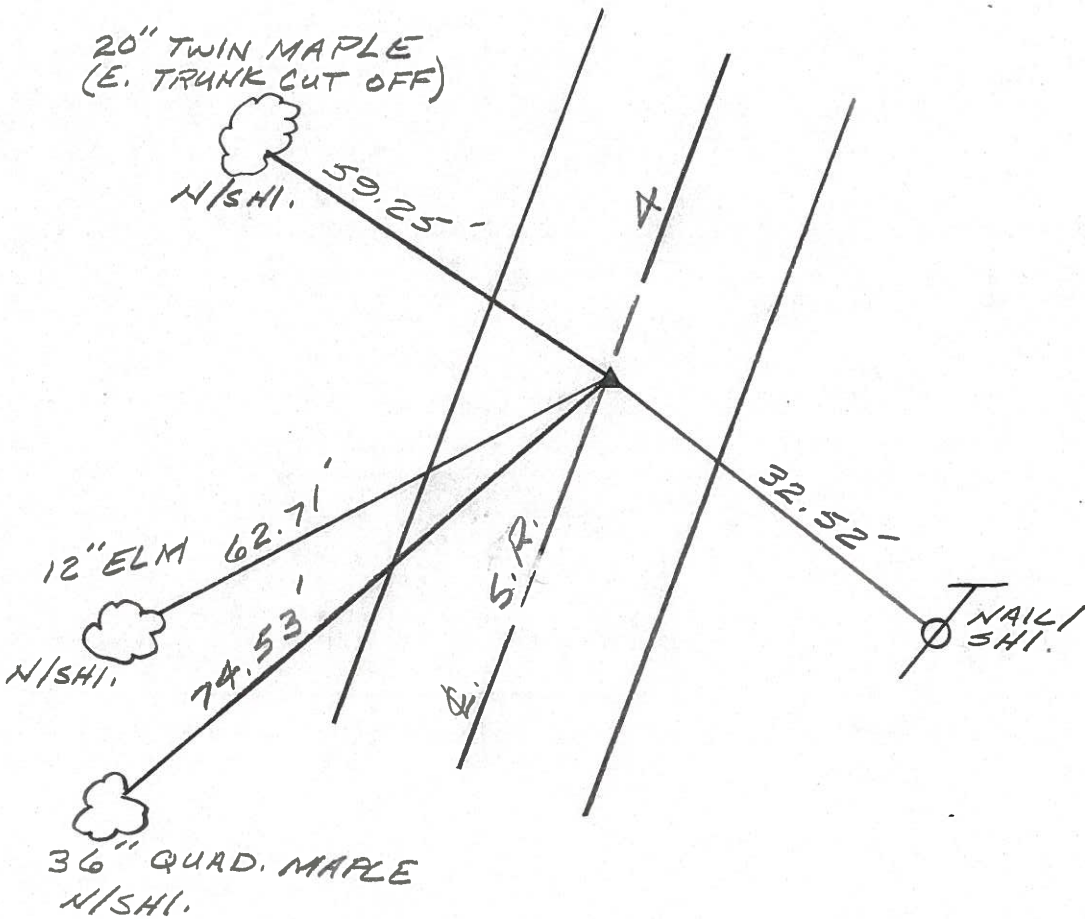
TO _____ EDGE PAVEMENT

S.L.M. 235+76.76

103



P.T.



PERSONNEL	TITLE	PERSONNEL	TITLE
<u>Cronin</u>			
<u>Ripple</u>			
<u>Geyman</u>			
<u>Barbour</u>			

COUNTY Seneca DATE 3/15/83
 S. R. # 4 WEATHER SUNNY
 SEC. Bridge - Sen. 4-0441 TEMP 38°

DESCRIPTION Ties for Control Points JOB NO. _____

