

O.D.O.T. DISTRICT 2 SURVEY OFFICE (USE ONLY)

PERSONNEL

REFERENCE NO. 10 C

SHEET 25 OF 56

NOTES RHOADES

DATE 11/1/23

ROUTE SR 4

H.C. AUBLE

WEATHER SUNNY

COUNTY SENECA

R.C. MILLER

TEMP. 36°

TOWNSHIP VENICE

DWG BY RHOADES

PID 101241

SECTION 10

T 1 N R 17 E

TYPE MONUMENT MAG/WASHER

ON SURFACE - ~~BELOW~~ ON

OFFSET Q PAVEMENT 1.0' LT : ~~RT~~

10.8' TO RT EDGE PAVEMENT

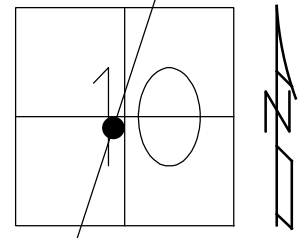
STATION: 247+66.20

HORZ. DATUM: NAD83(2011)

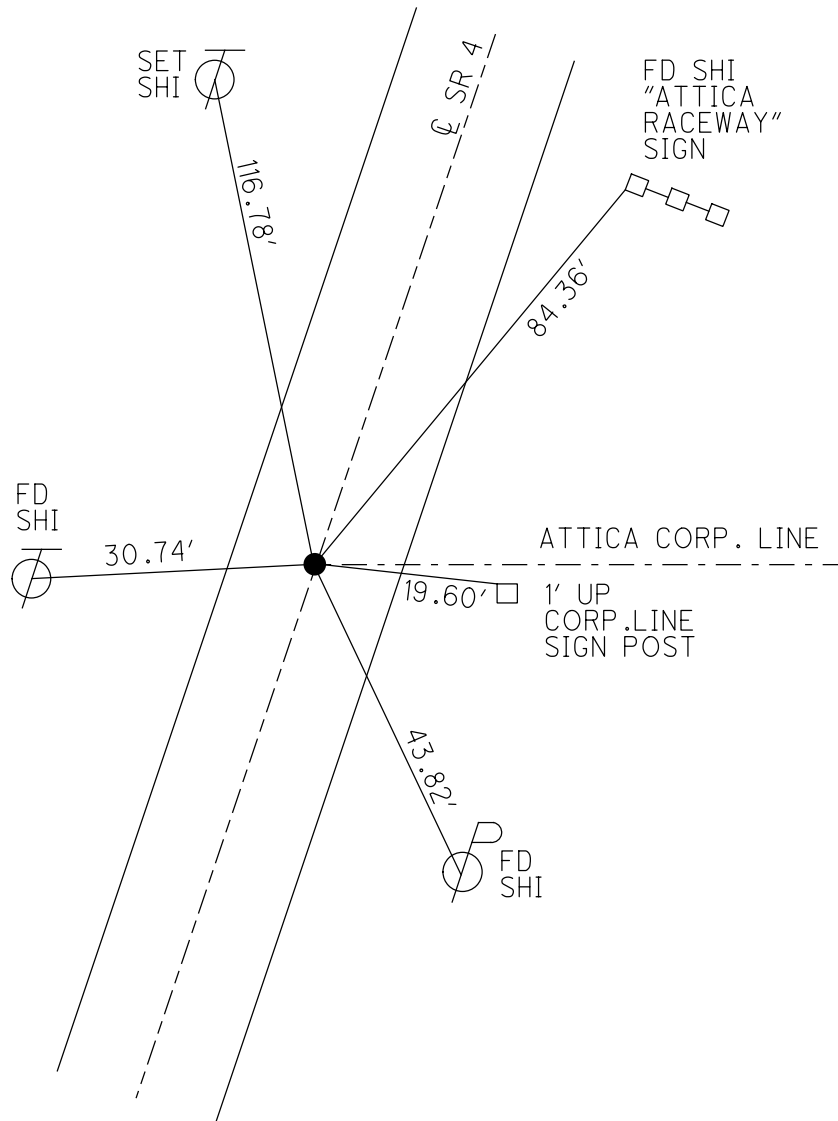
GEOID: NAVD88 2018

GRID: NORTHING: 506843.960

EASTING: 1860670.152



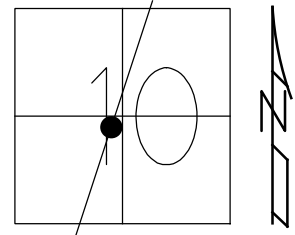
RECORD: P.I.  
 STA: 247+70.04  
 $\Delta = 00^\circ 14' RT$   
 SET P.K./WASHER  
 ATOP P.K.NAIL  
 12/18/74  
 FD P.K./WASHER  
 9/26/1991  
 FD P.K./WASHER  
 SV122  
 9/15/09  
 SET P.K./WASHER  
 FIN 122  
 10/18/10 KPM  
 FD P.K./WASHER  
 9/15/21, DSA  
 D.N.F.  
 2/28/22, JFO  
 SET MAG/WASHER  
 REFC10  
 7/25/22, DSA  
 FD MAG/WASHER  
 REF10C  
 7/17/23, TDN  
 SET MAG/WASHER  
 11/1/23, DSA



O.D.O.T. DISTRICT 2 SURVEY OFFICE (USE ONLY)

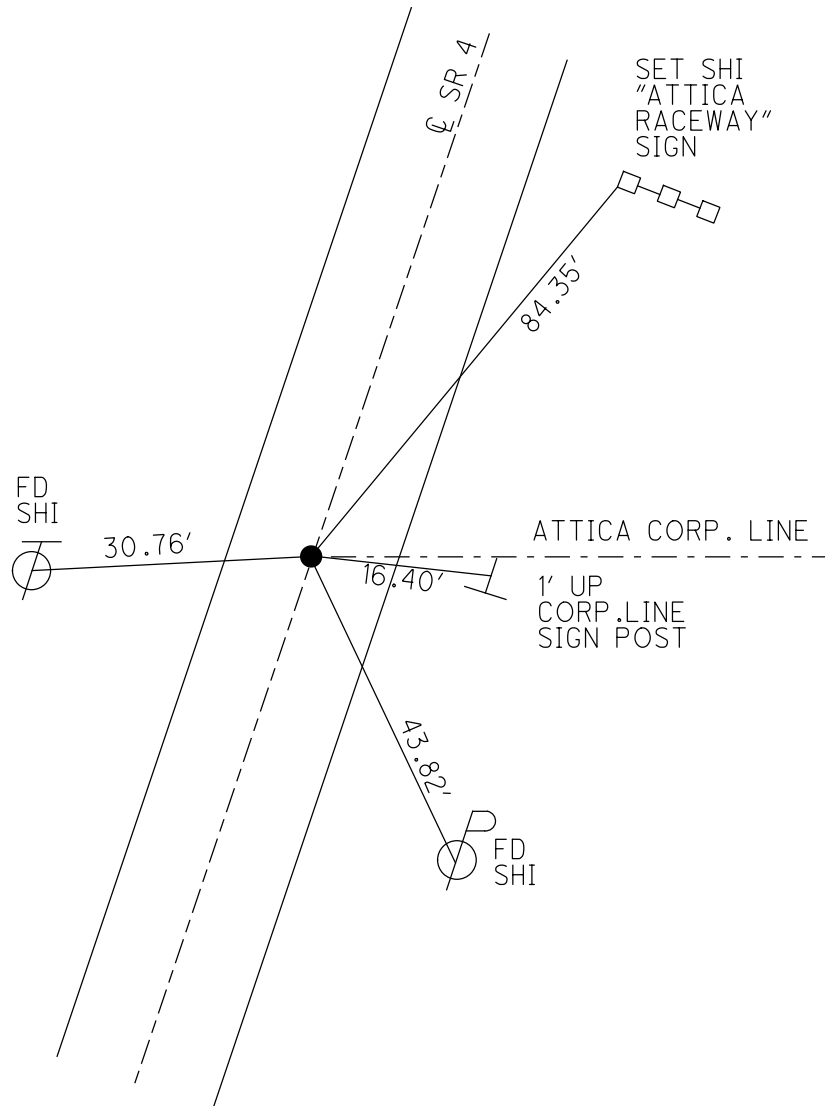
PERSONNEL	REFERENCE NO. <u>10 C</u>	SHEET <u>25</u> OF <u>41</u>
NOTES <u>NIESE</u>	DATE <u>9/15/21</u>	ROUTE <u>SR 4</u>
H.C. <u>AUBLE</u>	WEATHER <u>OVERCAST</u>	COUNTY <u>SENECA</u>
R.C. <u>NIESE</u>	TEMP. <u>70°</u>	TOWNSHIP <u>VENICE</u>
		SECTION <u>10</u>
DWG BY <u>WHITAKER</u>	PID <u>85242</u>	T <u>1</u> N R <u>17</u> E

TYPE MONUMENT P.K./WASHER  
 ON SURFACE - ~~BELOW~~ ON  
 OFFSET  $\odot$  PAVEMENT 0.5' LT : ~~RT~~  
10.8' TO RT EDGE PAVEMENT  
 STATION: 247+66.20



HORZ.DATUM: NAD83(2011) GEOID: NAVD88 2012A  
 GRID: NORTHING: 506843.951 EASTING: 1860670.084

RECORD: P.I.  
 STA: 247+70.04  
 $\Delta = 00^\circ 14' RT$   
 SET P.K./WASHER  
 ATOP P.K.NAIL  
 12/18/74  
 FD P.K./WASHER  
 9/26/1991  
 FD P.K./WASHER  
 SV122  
 9/15/09  
 SET P.K./WASHER  
 FIN 122  
 10/18/10 KPM  
 FD P.K./WASHER  
 9/15/21, DSA  
 D.N.F.  
 2/28/22, JFO  
 SET MAG/WASHER  
 REFC10  
 7/25/22, DSA



O.D.O.T. DISTRICT 2 SURVEY OFFICE (USE ONLY)

PERSONNEL

REFERENCE NO. 10 C

SHEET 25 OF 41

NOTES FINTEL

DATE 8/12/10

ROUTE SR 4

H.C. GOLDBERG

WEATHER SUNNY

COUNTY SENECA

R.C. HARBAUGH

TEMP. 85°

TOWNSHIP VENICE

SECTION 10

DWG BY RHOADES PID 85242

T 1 N R 17 E

TYPE MONUMENT P.K./WASHER

ON SURFACE - ~~BELOW~~ ON

OFFSET Q PAVEMENT ON LT : RT

10.8' TO RT EDGE PAVEMENT

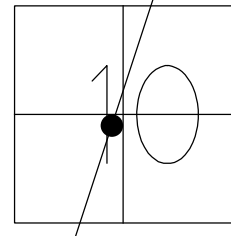
STATION: 247+66.20

HORZ.DATUM: NAD83(2011)

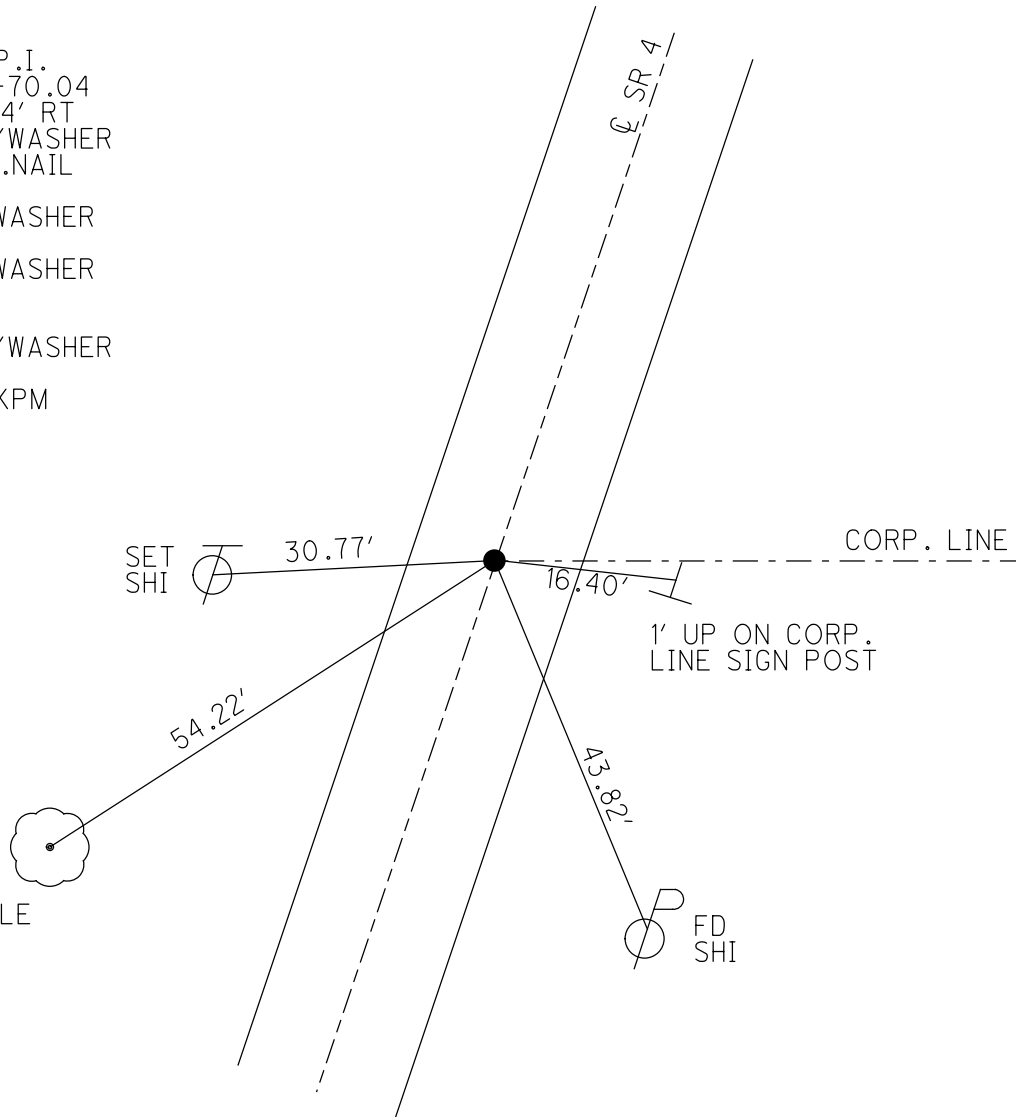
GEOID: NAVD88 2012A

GRID: NORTHING: 506843.951

EASTING: 1860670.084



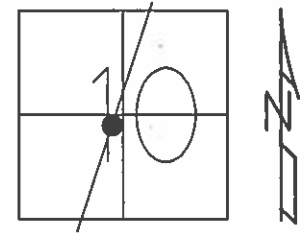
RECORD: P.I.  
 STA: 247+70.04  
 $\Delta = 00^\circ 14' RT$   
 SET P.K./WASHER  
 ATOP P.K.NAIL  
 12/18/74  
 FD P.K./WASHER  
 9/26/1991  
 FD P.K./WASHER  
 SV122  
 9/15/09  
 SET P.K./WASHER  
 FIN 122  
 10/18/10 KPM



O.D.O.T. DISTRICT 2 SURVEY OFFICE (USE ONLY)

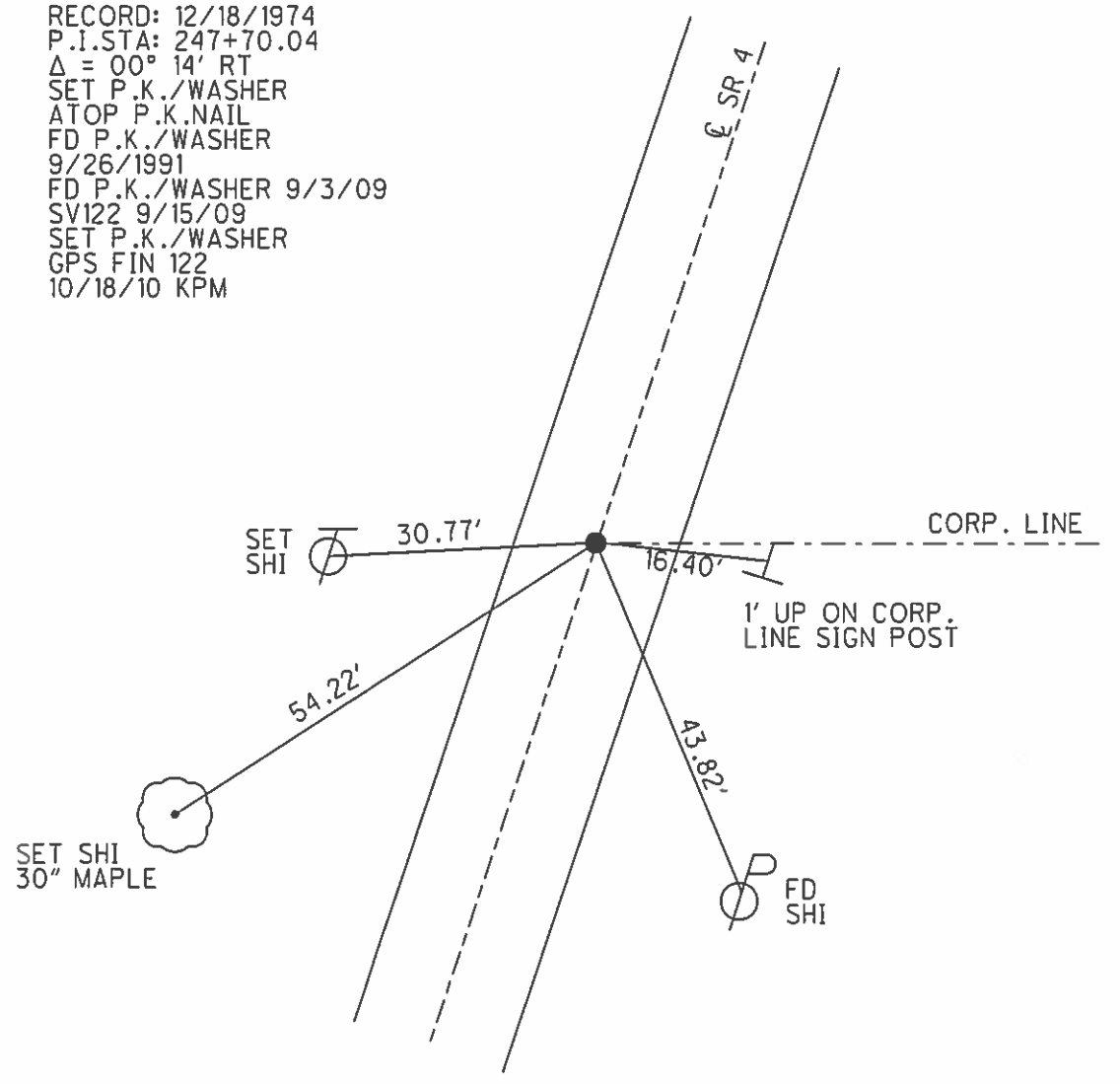
PERSONNEL \_\_\_\_\_ REFERENCE NO. 10 C SHEET 25 OF 41  
 NOTES FINTEL DATE 8/12/10 ROUTE SR 4  
 H.C. GOLDBERG WEATHER SUNNY COUNTY SENECA  
 R.C. HARBAUGH TEMP. 85° TOWNSHIP VENICE  
 \_\_\_\_\_ SECTION 10  
 \_\_\_\_\_ T 1 N R 17 E

TYPE MONUMENT P.K./WASHER  
 ON SURFACE - ~~BELOW~~ ON  
 LEFT - ☉ PAV'T - RIGHT ON  
10.8' TO RT EDGE PAVEMENT  
 S.L.M. 247+66.20



GRID: NORTHING: 506843.951 EASTING: 1860670.084

RECORD: 12/18/1974  
 P.I. STA: 247+70.04  
 $\Delta = 00^\circ 14' RT$   
 SET P.K./WASHER  
 ATOP P.K.NAIL  
 FD P.K./WASHER  
 9/26/1991  
 FD P.K./WASHER 9/3/09  
 SV122 9/15/09  
 SET P.K./WASHER  
 GPS FIN 122  
 10/18/10 KPM



O.D.O.T. DISTRICT 2 SURVEY OFFICE

PERSONNEL

REFERENCE NO. 10-C

SHEET 23 OF 50

NOTES CHENEY

H.C. RIPPLE

DATE 7-27-1993

ROUTE # 4

R.C. BARBOUR

WEATHER FAIR

COUNTY SENECA

GEYMAN

TEMP. 85°

TOWNSHIP VENICE

SECTION 10

T1N R18E

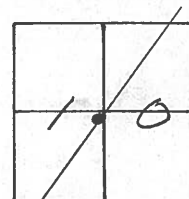
TYPE MONUMENT PK/WASHER

ON SURFACE - ~~BELOW~~ ON

~~LEFT - C. PAV'T.~~ - ~~RIGHT~~ ON

10' TO LT. EDGE PAVEMENT

S.L.M. 248+25



RECORD: 12-18-1974

P.I. STA. 247+70.04

$\Delta = 00^{\circ} 14'$  RT.

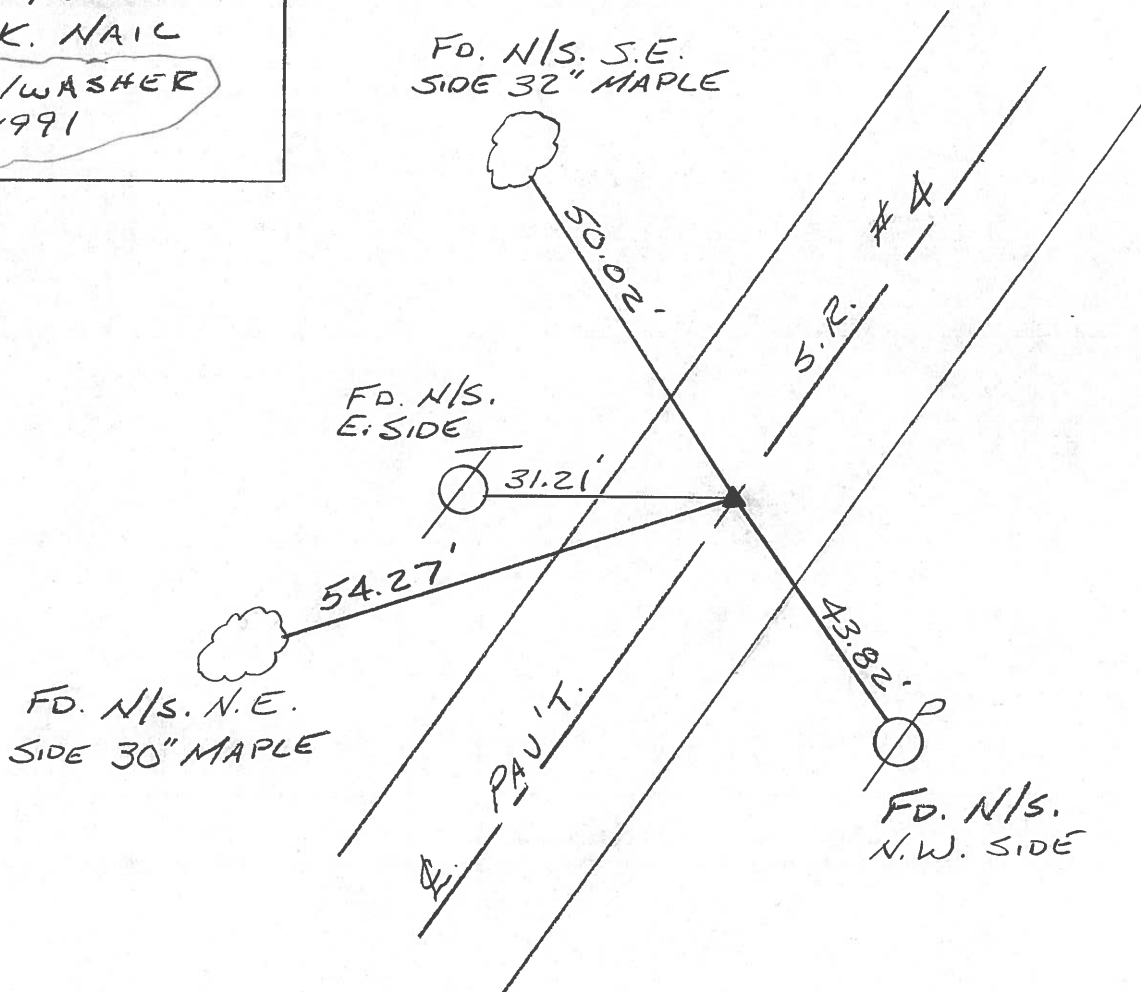
SET PK/WASHER

ATOP P.K. NAIL

FD. PK/WASHER

9-26-1991

SET PK/WASHER  
10-7-1993  
RCC



O.D.O.T. DISTRICT 2 SURVEY OFFICE

PERSONNEL \_\_\_\_\_

REFERENCE NO. \_\_\_\_\_

SHEET 5 OF 5

NOTES CHENEY

H.C. VANDUSEN

DATE 9-26-1991

ROUTE 4

R.C. LONG

WEATHER PARTLY SUNNY

COUNTY SENECA

TEMP. 55°

TOWNSHIP VENICE

SECTION \_\_\_\_\_

T 1 N R 18 E

TYPE MONUMENT FD. PK/WASHER

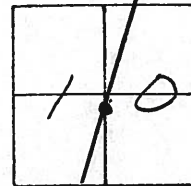
ON SURFACE - ~~BELOW~~ \_\_\_\_\_

LEFT- & PAV'T. - RIGHT \_\_\_\_\_

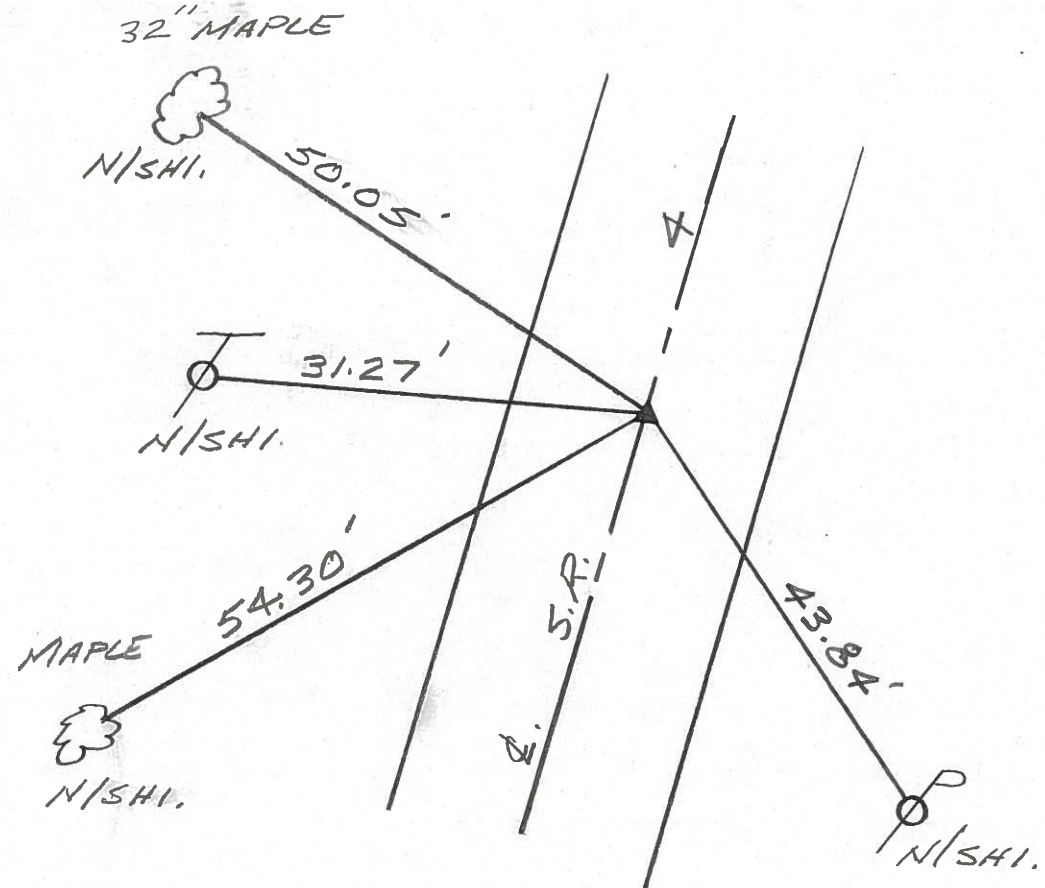
TO \_\_\_\_\_ EDGE PAVEMENT

S.L.M. 247+70.04

**100**

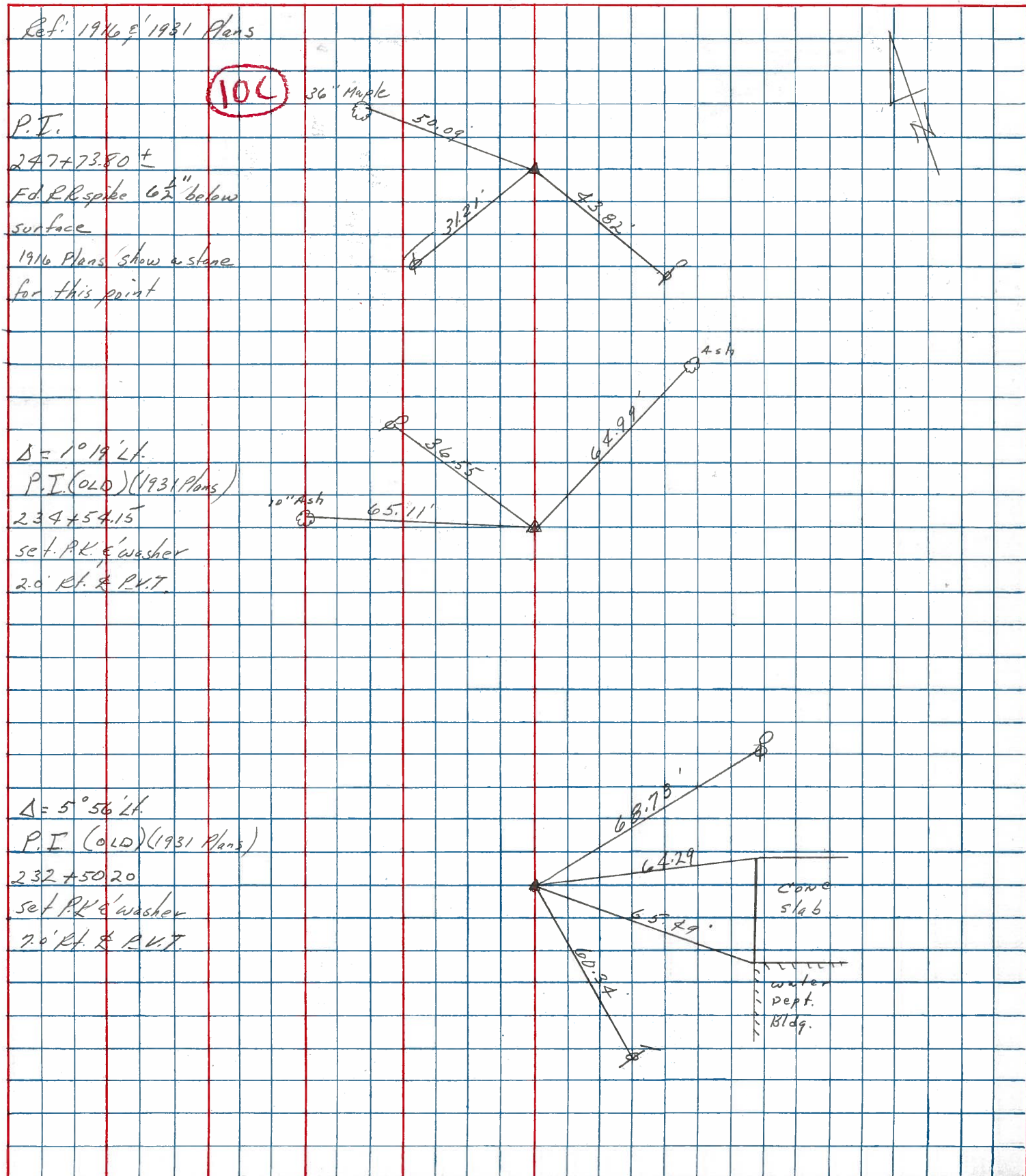


P.I.  
 $\Delta$  RECORD =  $0^{\circ}14'$  RT.  
 PREVIOUS MONUMENT:  
 P.K. NAIL



PERSONNEL	TITLE	PERSONNEL	TITLE	COUNTY	DATE	WEATHER	TEMP.
<u>Cronin</u>				<u>Seneca</u>	<u>3/15/83</u>	<u>SUNNY</u>	<u>38°</u>
<u>Ripple</u>				S. R. <u># 4</u>			
<u>Geyman</u>				SEC. <u>Bridge-Sen. 4-04.41</u>			
<u>Barbour</u>							

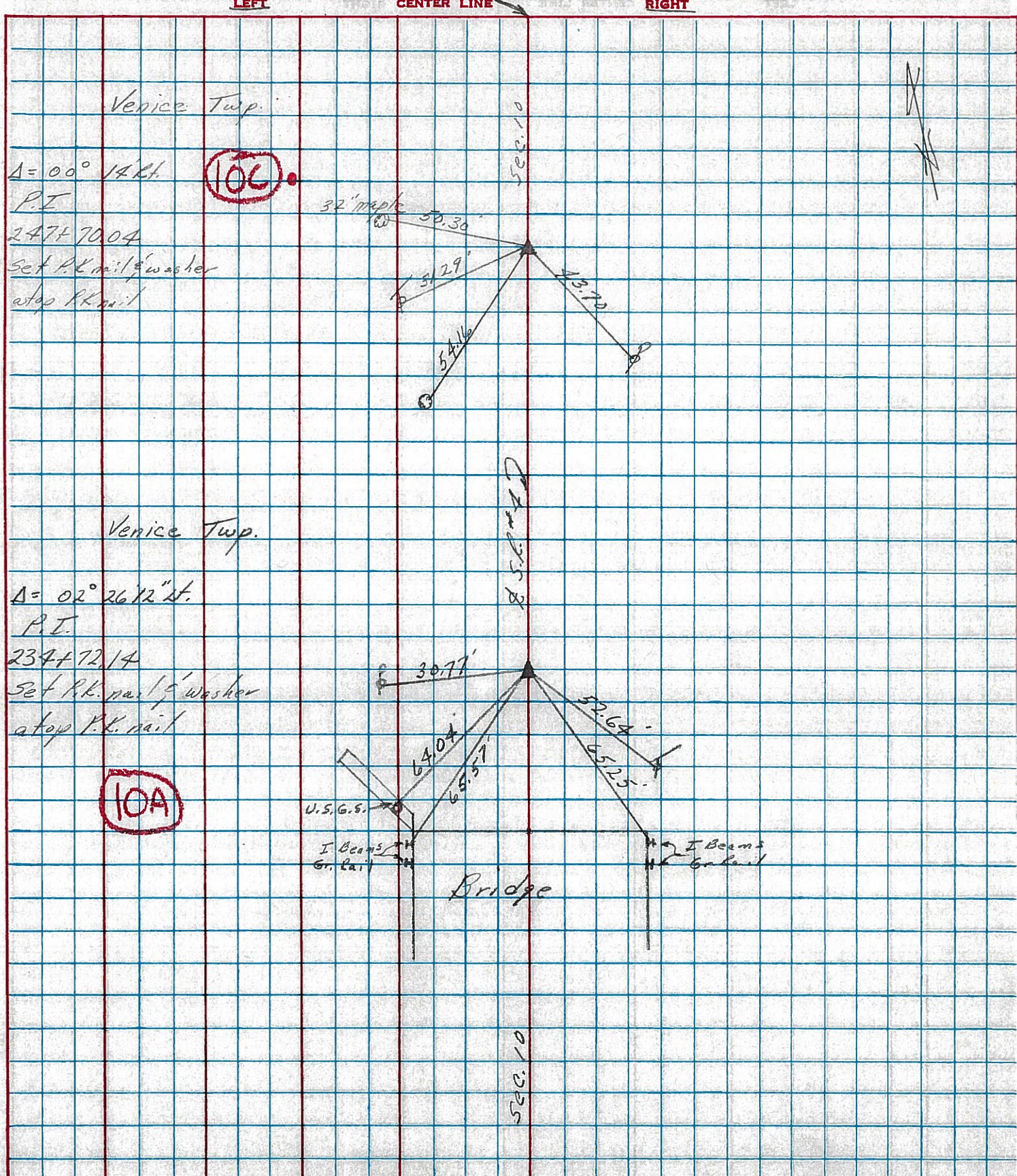
DESCRIPTION Ties for Control Points JOB NO. \_\_\_\_\_





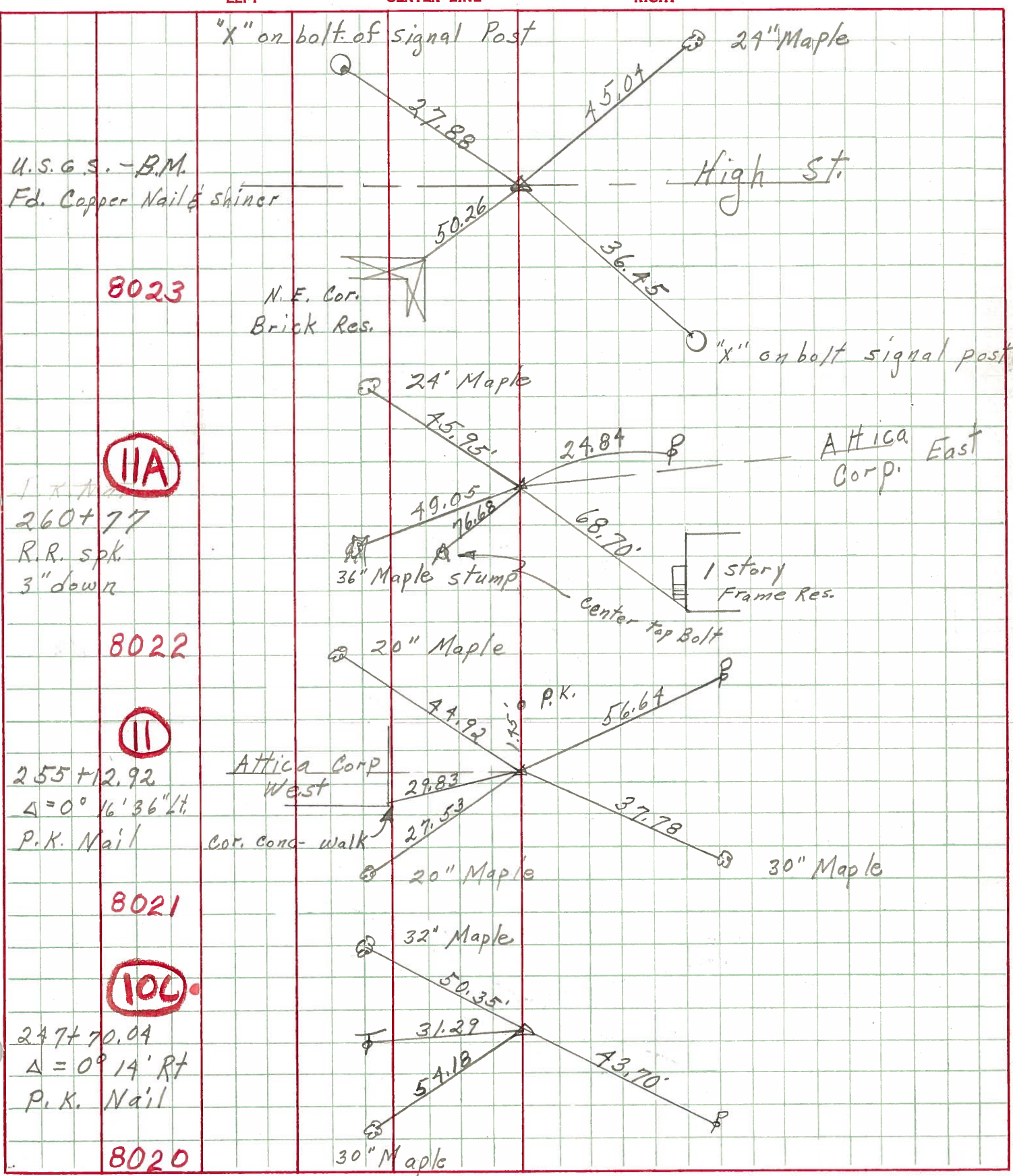
PERSONNEL	TITLE	PERSONNEL	TITLE	COUNTY	DATE
Cronin		Schneider		Seneca	12/18/74
Ash		Mosser		S. R. # 4	WEATHER overcast
Ripple		Barbour		SEC Crawford Co. Line-North	TEMP 25°
Geyman					

DESCRIPTION Ties for Control Points JOB NO. \_\_\_\_\_





PERSONNEL TITLE PERSONNEL TITLE COUNTY Seneca DATE 10-1-68  
 Schneider \_\_\_\_\_ Potts \_\_\_\_\_  
 Mosser \_\_\_\_\_ S. R. 4 WEATHER Fair  
 Barbour \_\_\_\_\_ SEC. \_\_\_\_\_ TEMP. 75°  
 Redding \_\_\_\_\_  
 DESCRIPTION Ties for Control Points JOB NO. \_\_\_\_\_



8023

IIA

1 x nail  
 260+77  
 R.R. spk.  
 3" down

8022

II

255+12.92  
 $\Delta = 0^\circ 16' 36''$   
 P.K. Nail

8021

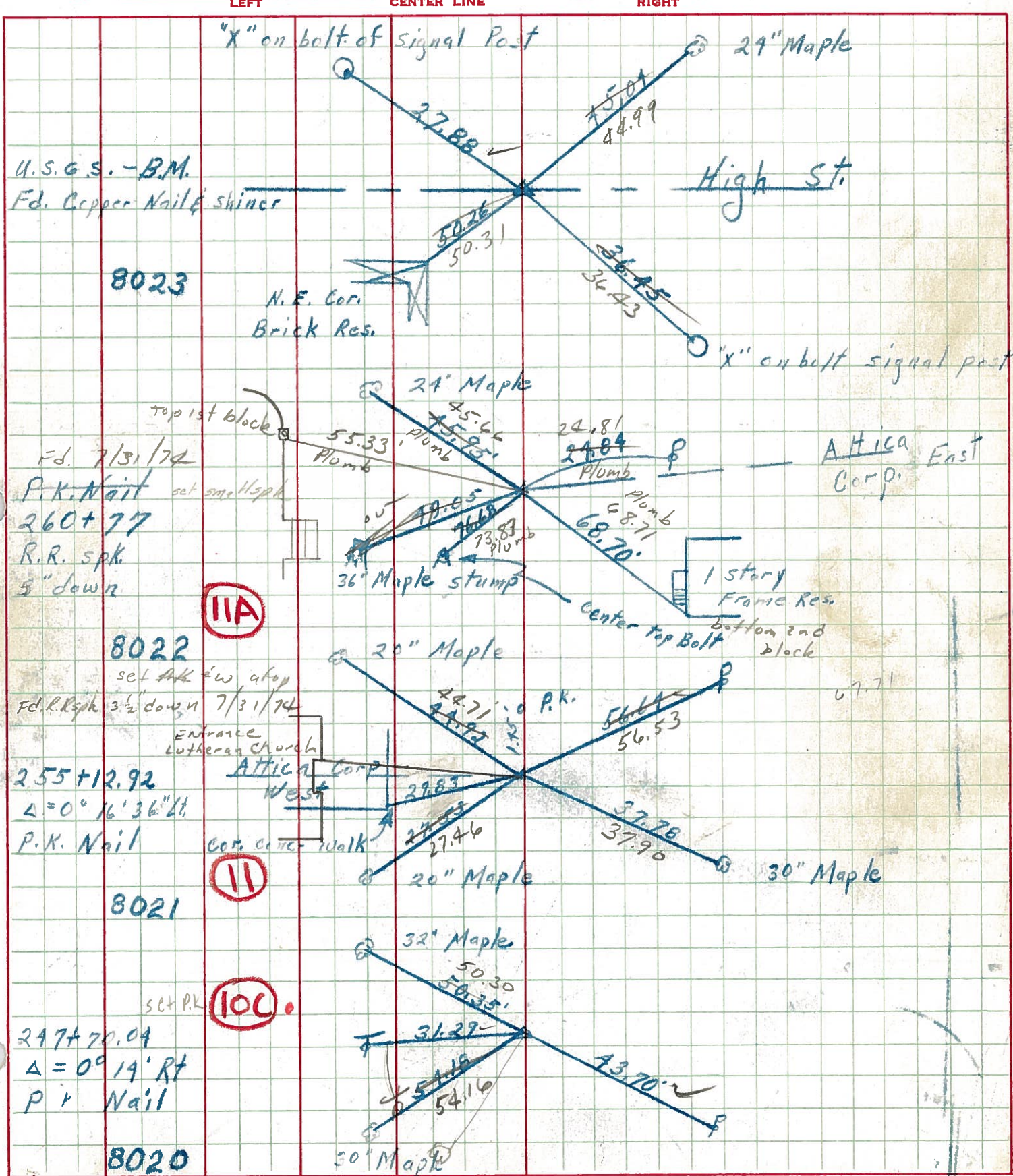
100

247+70.04  
 $\Delta = 0^\circ 14' RT$   
 P.K. Nail

8020



PERSONNEL	TITLE	PERSONNEL	TITLE	COUNTY	Seneca	DATE	10-1-68
Schneider		Potts		S. R.	4	WEATHER	Fair
Mosser				SEC.		TEMP.	75°
Barbour				DESCRIPTION <u>Ties for Control Points</u>			
Redding				JOB NO.			





PERSONNEL	TITLE	PERSONNEL	TITLE	COUNTY	DATE
KrABILL				Seneca	
Kowaleski				S. R. 4	WEATHER
Brooks				SEC.	TEMP.

DESCRIPTION	LEFT	CENTER LINE	RIGHT	JOB NO.
-------------	------	-------------	-------	---------

