

O.D.O.T. DISTRICT 2 SURVEY OFFICE (USE ONLY)

PERSONNEL

REFERENCE NO. 11

SHEET 26 OF 56

NOTES RHOADES

DATE 11/1/23

ROUTE SR 4

H.C. AUBLE

WEATHER SUNNY

COUNTY SENECA

R.C. MILLER

TEMP. 36°

TOWNSHIP VENICE

SECTION 10

DWG BY RHOADES PID 101241

T 1 N R 17 E

TYPE MONUMENT MAG/WASHER

ON SURFACE - ~~BELOW~~ ON

OFFSET Q PAVEMENT 1.1' ~~LT~~ : RT

9.1' TO RT EDGE PAVEMENT

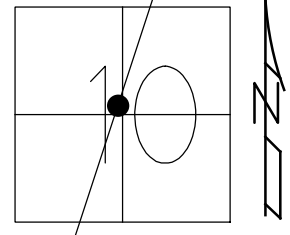
STATION: 255+07

HORZ.DATUM: NAD83(2011)

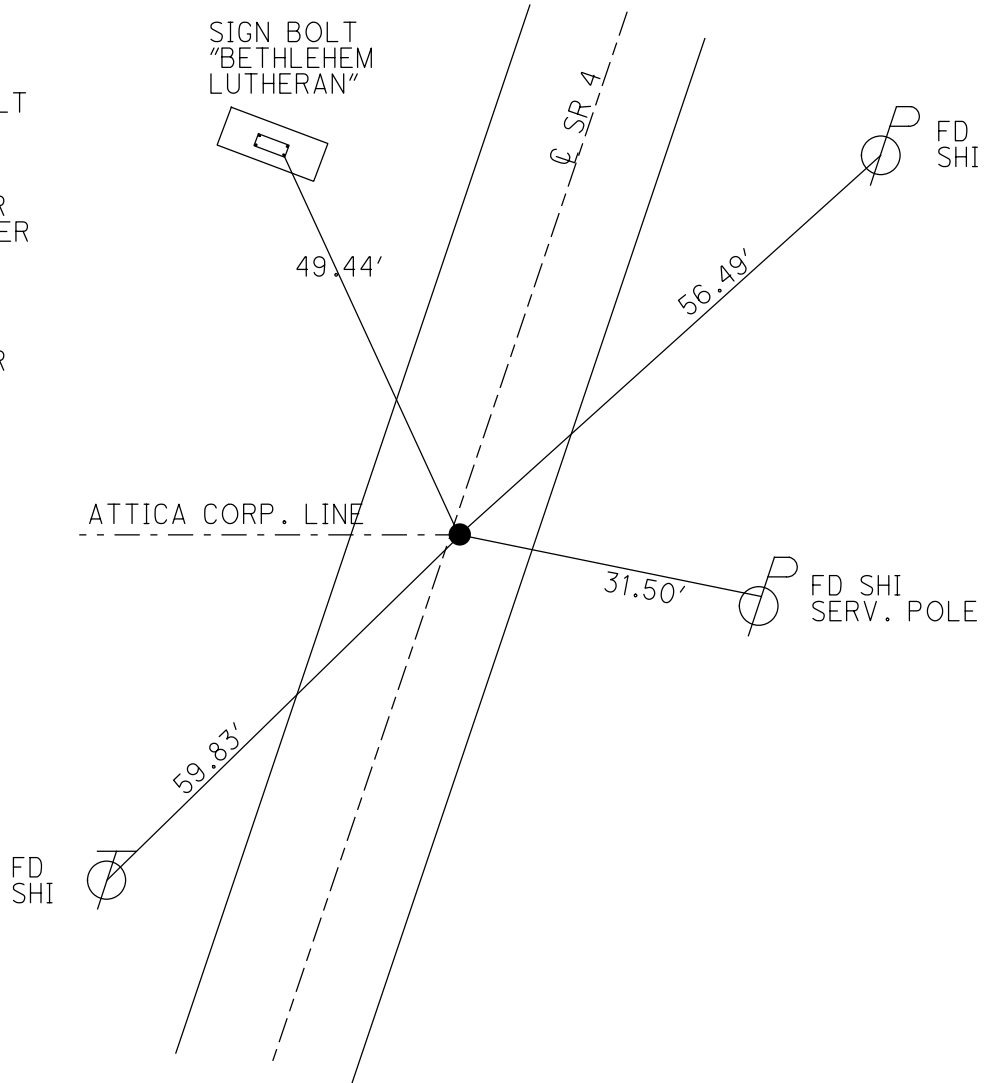
GEOID: NAVD88 2018

GRID: NORTHING: 507540.191

EASTING: 1860922.916



RECORD: P.I.
 STA: 255+12.92
 $\Delta = 00^\circ 16' 36''$ LT
 FD R.R.SPIKE
 3.5" DOWN
 7/31/1974
 SET P.K./WASHER
 ATOP P.K./WASHER
 10/7/1993, RCC
 FD P.K./WASHER
 SV124
 9/15/09
 SET P.K./WASHER
 FIN 124
 10/21/10, KPM
 FD P.K./WASHER
 9/15/21, DSA
 2/8/22, JFO
 REF11
 7/17/23, TDN
 SET MAG/WASHER
 11/1/23, DSA

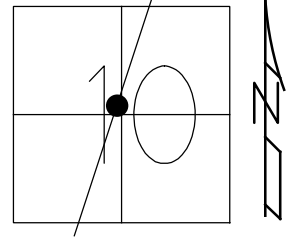


O.D.O.T. DISTRICT 2 SURVEY OFFICE (USE ONLY)

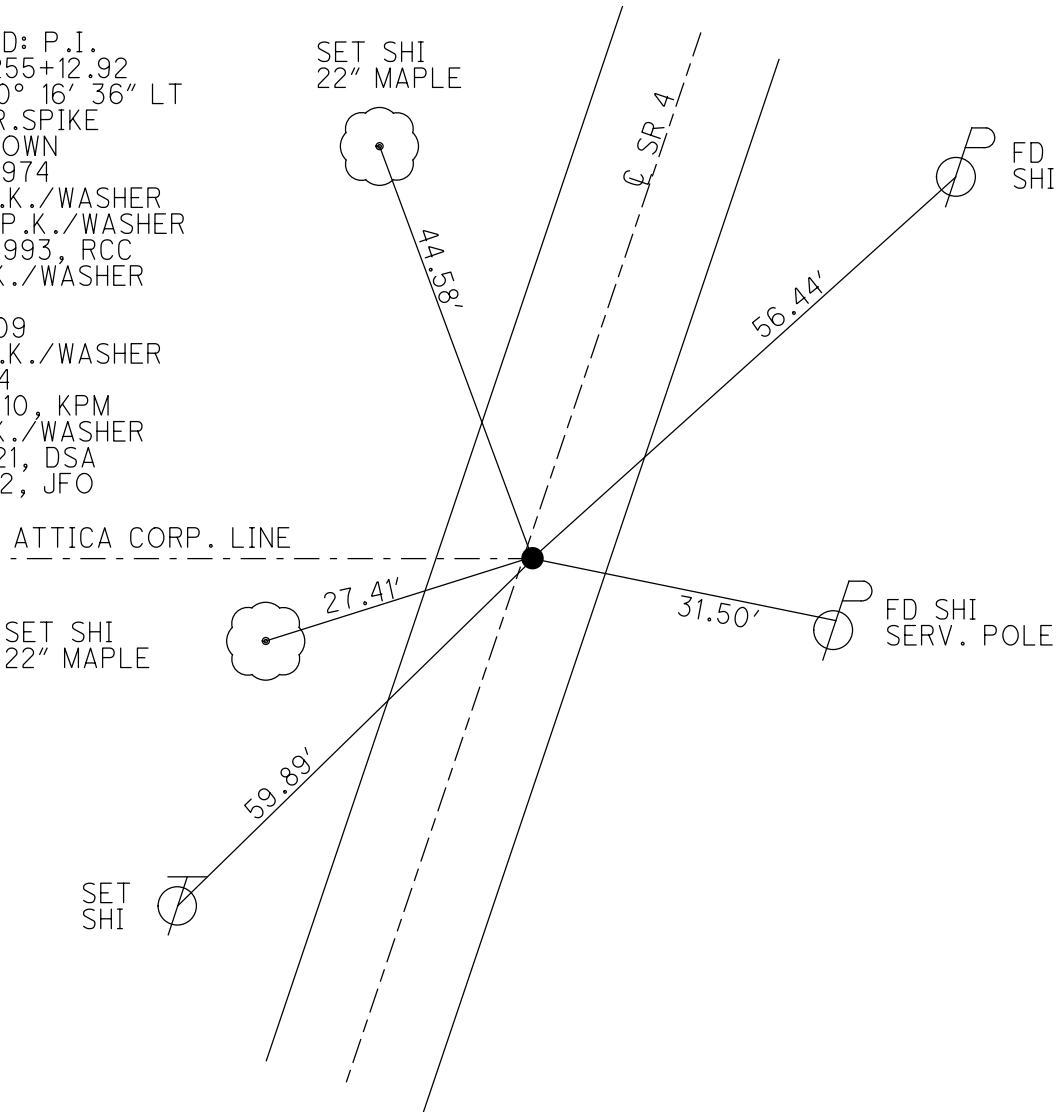
PERSONNEL _____ REFERENCE NO. 11 SHEET 26 OF 41
 NOTES NIESE DATE 9/14/21 ROUTE SR 4
 H.C. AUBLE WEATHER WINDY COUNTY SENECA
 R.C. NIESE TEMP. 80° TOWNSHIP VENICE
 DWG BY RHOADES PID PVTRAIN SECTION 10
 T 1 N R 17 E

TYPE MONUMENT P.K./WASHER
 ON SURFACE - ~~BELOW~~ ON _____
 OFFSET \odot PAVEMENT 1.1' ~~LT~~ : RT
9.1' TO RT EDGE PAVEMENT
 STATION: 255+07

HORZ.DATUM: NAD83(2011) GEOID: NAVD88 2018
 GRID: NORTHING: 507540.258 EASTING: 1860922.881



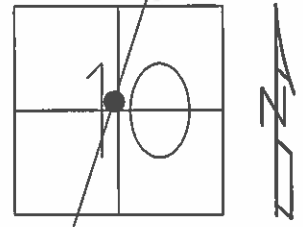
RECORD: P.I.
 STA: 255+12.92
 $\Delta = 00^\circ 16' 36''$ LT
 FD R.R.SPIKE
 3.5" DOWN
 7/31/1974
 SET P.K./WASHER
 ATOP P.K./WASHER
 10/7/1993, RCC
 FD P.K./WASHER
 SV124
 9/15/09
 SET P.K./WASHER
 FIN 124
 10/21/10, KPM
 FD P.K./WASHER
 9/15/21, DSA
 2/8/22, JFO



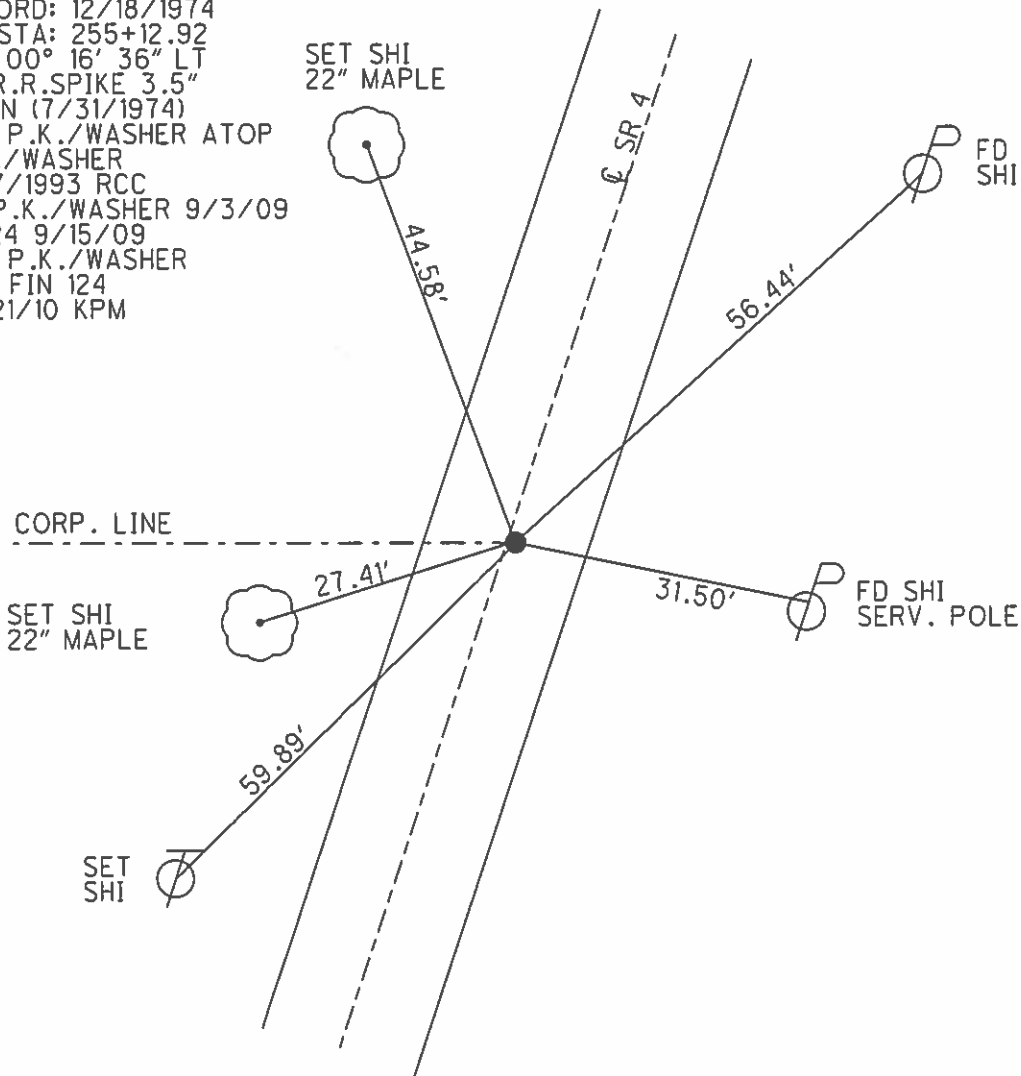
O.D.O.T. DISTRICT 2 SURVEY OFFICE (USE ONLY)

PERSONNEL	REFERENCE NO.	<u>11</u>	SHEET	<u>26</u>	OF	<u>41</u>
NOTES	FINTEL	DATE	<u>8/12/10</u>	ROUTE	<u>SR 4</u>	
H.C.	<u>GOLDBERG</u>	WEATHER	<u>SUNNY</u>	COUNTY	<u>SENECA</u>	
R.C.	<u>HARBAUGH</u>	TEMP.	<u>85°</u>	TOWNSHIP	<u>VENICE</u>	
				SECTION	<u>10</u>	
				T	<u>1</u>	R
					<u>N</u>	<u>17</u>
				E		

TYPE MONUMENT P.K./WASHER
 ON SURFACE - ~~BELOW~~ ON
~~LEFT~~ - C PAV'T - RIGHT 1.1'
9.1' TO RT EDGE PAVEMENT
 S.L.M. 255+07.00 (ATTICA CORP. LINE WEST)
 GRID: NORTHING: 507540.258 EASTING: 1860922.881



RECORD: 12/18/1974
 P.I. STA: 255+12.92
 $\Delta = 00^\circ 16' 36''$ LT
 FD R.R. SPIKE 3.5"
 DOWN (7/31/1974)
 SET P.K./WASHER ATOP
 P.K./WASHER
 10/7/1993 RCC
 FD P.K./WASHER 9/3/09
 SV124 9/15/09
 SET P.K./WASHER
 GPS FIN 124
 10/21/10 KPM



O.D.O.T. DISTRICT 2 SURVEY OFFICE

PERSONNEL

REFERENCE NO. 11

SHEET 24 OF 50

NOTES CHENEY

H.C. RIPPLE

DATE 7-27-1993

ROUTE #4

R.C. BARBOUR

WEATHER FAIR

COUNTY SENECA

GEYMAN

TEMP. 85°

TOWNSHIP VENICE

SECTION 10

T1N R18E

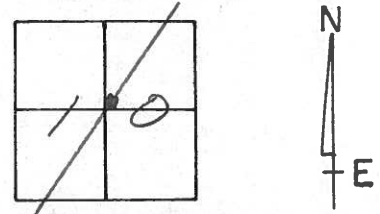
TYPE MONUMENT R.P. SPK.

ON SURFACE - ~~BELOW~~ ON

~~10'~~ - CL PAV'T. - RIGHT 1.5'

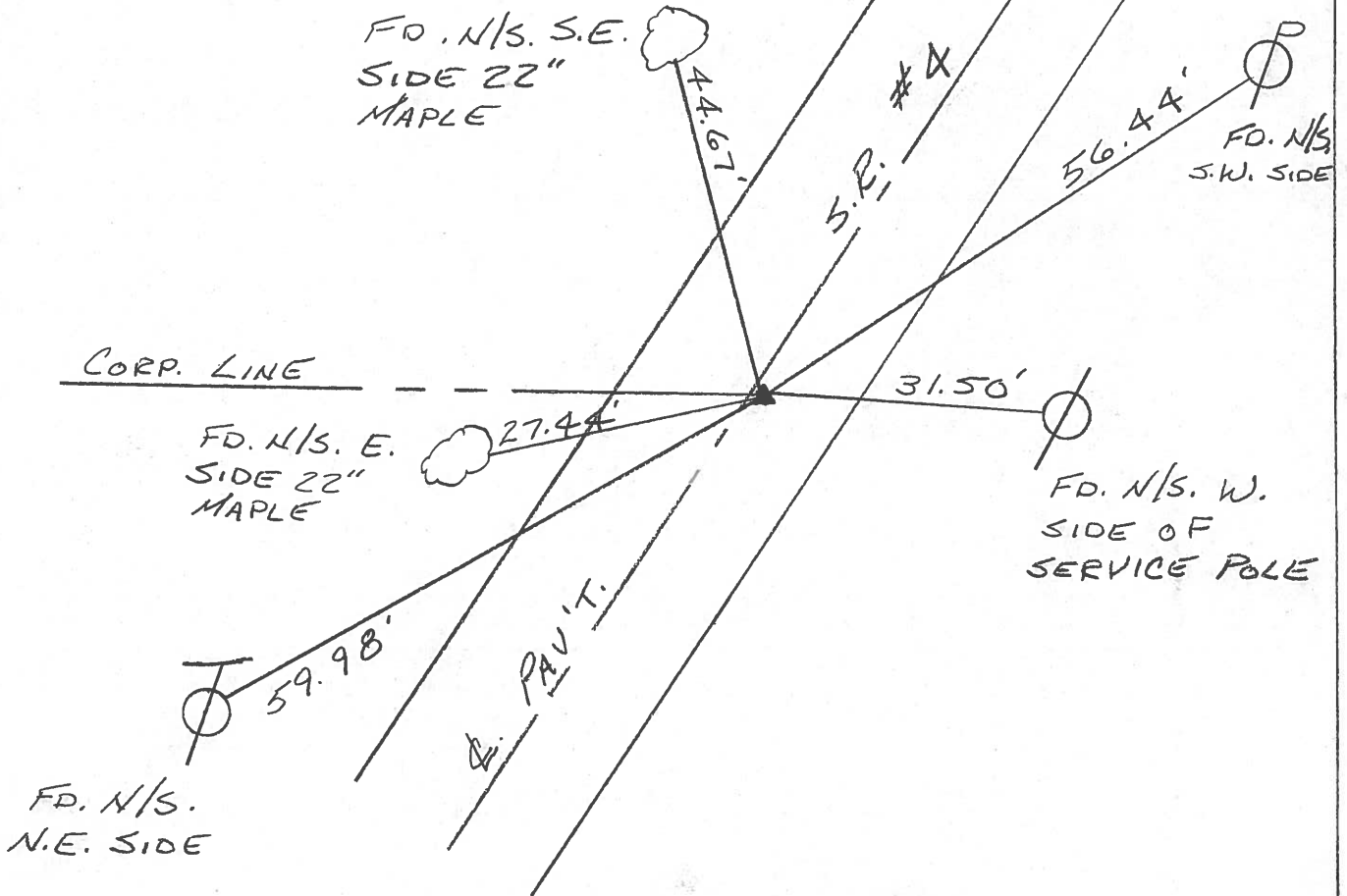
10' TO RT. EDGE PAVEMENT

S.L.M. 255+88 (ATICA CORP. LINE WEST)



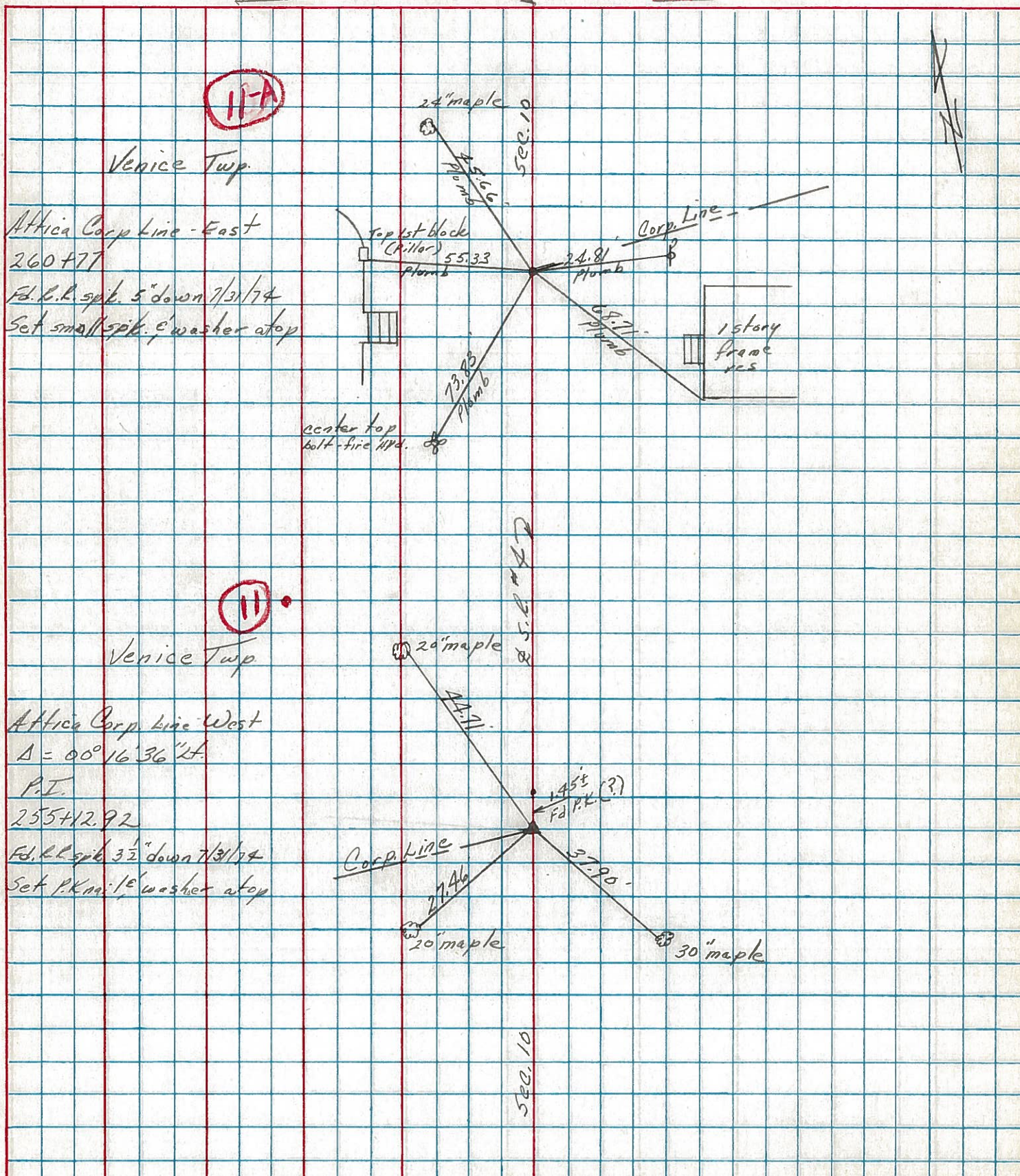
RECORD: 12-18-1974
 P.I. STA. 255+12.92
 $\Delta = 00^{\circ}16'36''$ LT.
 FD. R.R. SPK. 3.5" Down (7-31-74)
 SET PK/WASHER ATOP

SET PK/WASHER
10-7-1993
RCC

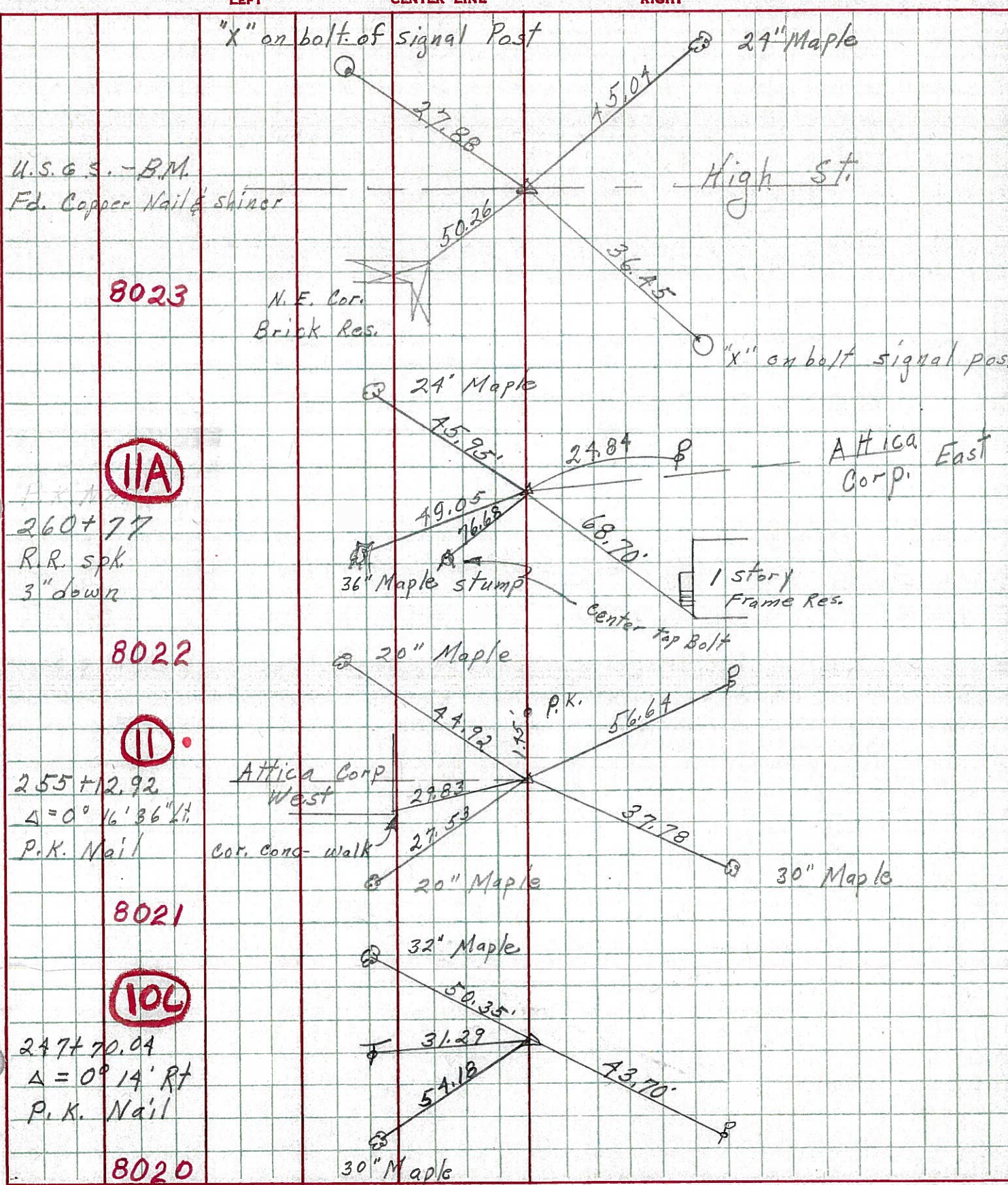


PERSONNEL	TITLE	PERSONNEL	TITLE	COUNTY	DATE
Cronin		Schneider		Seneca	12/18/74
Ash		Messer		S. R. # 4	WEATHER overcast
Ripple		Barbour		SEC. Crawford Co. Line-North	TEMP. 25°
Geyman					

DESCRIPTION Ties for Control Points JOB NO. _____

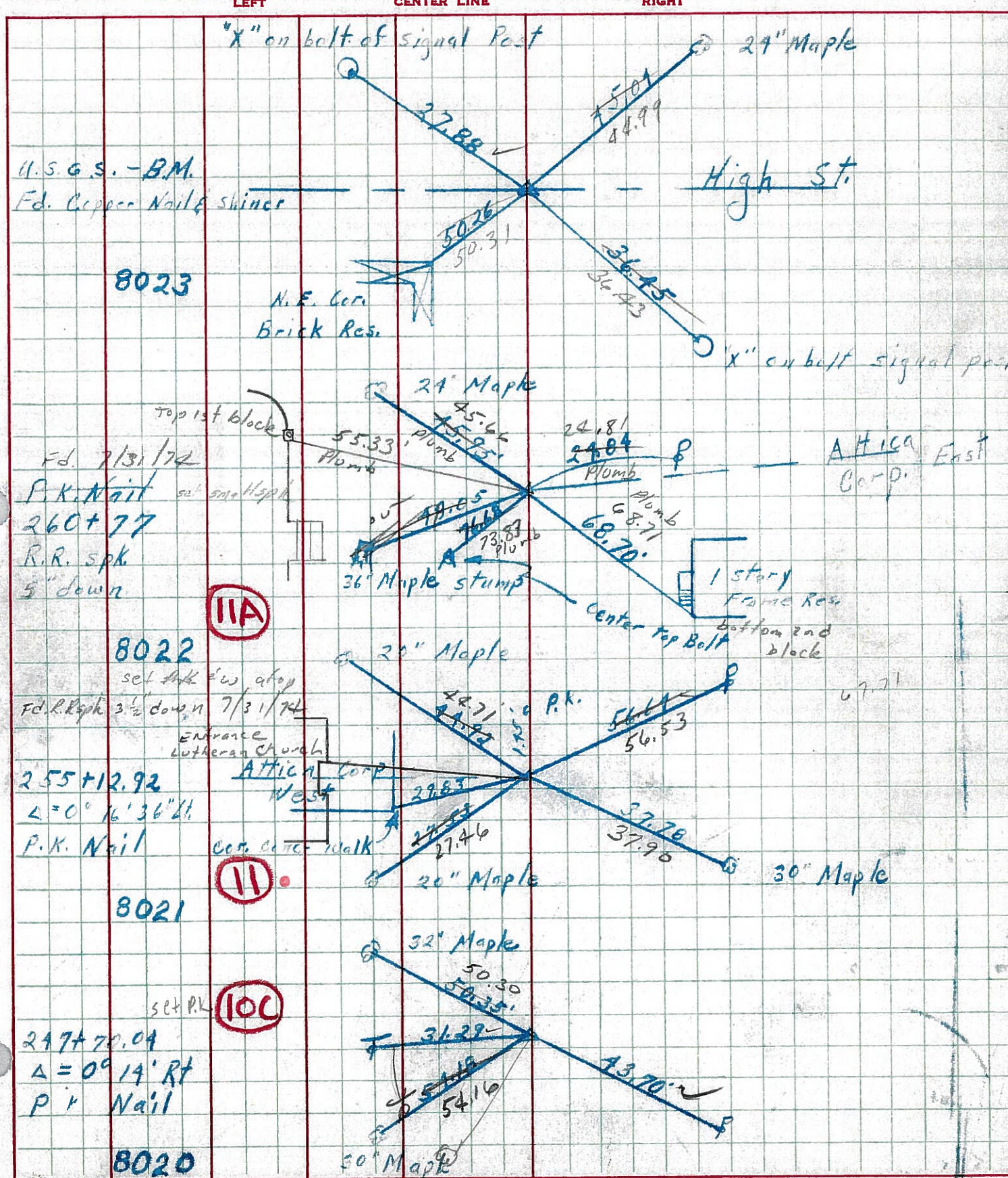


PERSONNEL TITLE PERSONNEL TITLE COUNTY Seneca DATE 10-1-68
 Schneider Potts
 Mosser
 Barbour S. R. 4 WEATHER Fair
 Redding SEC. TEMP 75°
 DESCRIPTION Ties for Control Points JOB NO.



PERSONNEL	TITLE	PERSONNEL	TITLE	COUNTY	DATE
Schneider		Potts		Seneca	10-1-68
Mosser				S. R. 4	WEATHER Fair
Barbour				SEC.	TEMP 75°
Redding					

DESCRIPTION Ties for Control Points JOB NO. _____



PERSONNEL	TITLE	PERSONNEL	TITLE	COUNTY	DATE	WEATHER	TEMP.
KyrBill				Seneca			
Kowaleski				S. R. 4			
Brooks							

DESCRIPTION	LEFT	CENTER LINE	RIGHT	JOB NO.
-------------	------	-------------	-------	---------

