

O.D.O.T. DISTRICT 2 SURVEY OFFICE (USE ONLY)

PERSONNEL

REFERENCE NO. 11 A

SHEET 27 OF 56

NOTES RHOADES

DATE 10/18/23

ROUTE SR 4

H.C. AUBLE

WEATHER CLOUDY

COUNTY SENECA

R.C. ASTON

TEMP. 59°

TOWNSHIP VENICE

NIESE

SECTION 10

DWG BY RHOADES

PID 101241

T 1 N R 17 E

TYPE MONUMENT MAG/WASHER

ON SURFACE - ~~BELOW~~ ON

OFFSET CL PAVEMENT 1' ~~LT~~ : RT

9.5' TO RT EDGE PAVEMENT

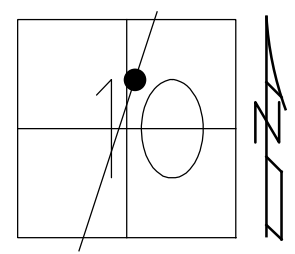
STATION: 260+70.77

HORZ.DATUM: NAD83 2011

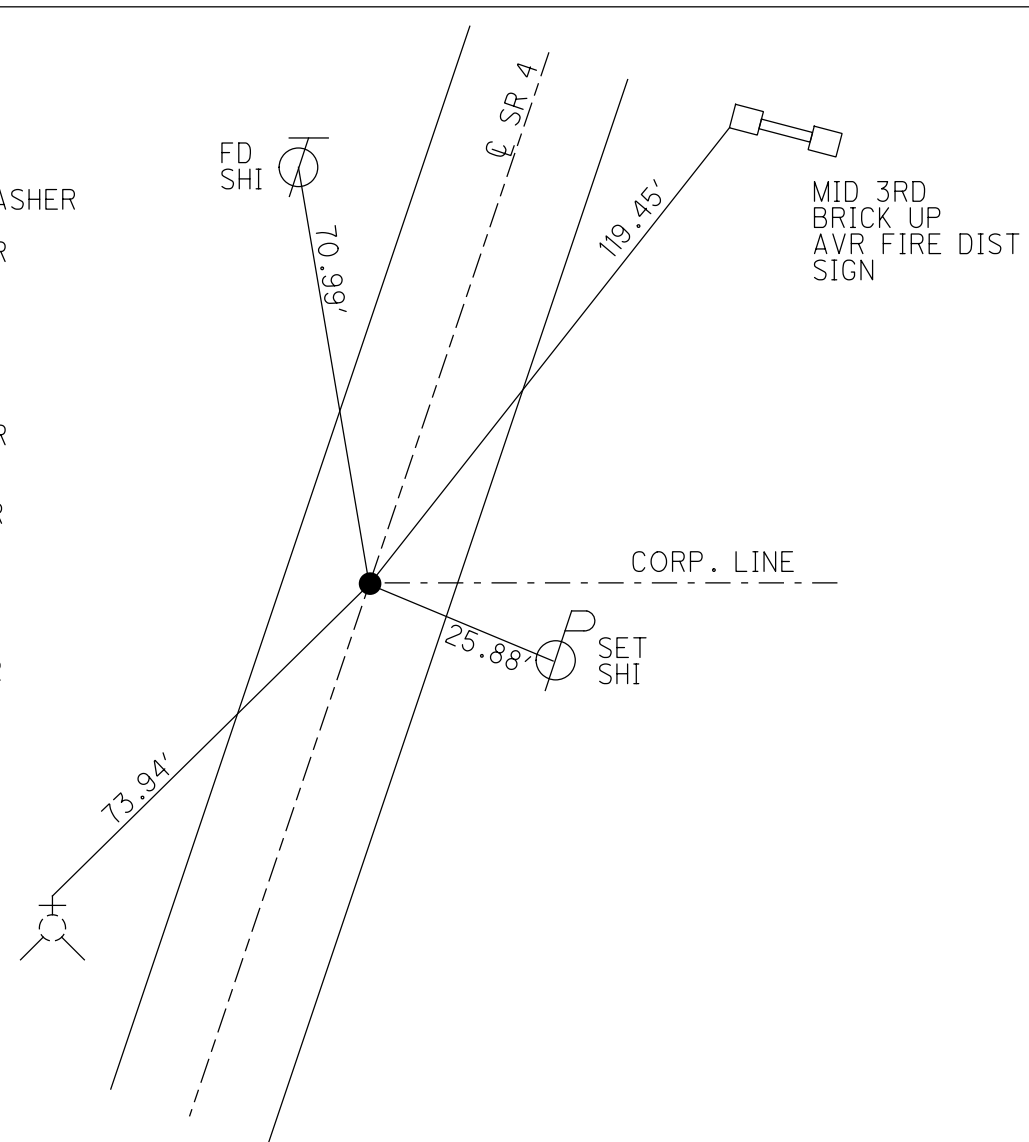
GEOID: NAVD88 2018

GRID: NORTHING: 508071.065

EASTING: 1861113.090



- RECORD:  
 STA: 260+77  
 FD R.R.SPIKE  
 5" DOWN  
 7/31/1974  
 SET SM.SPIKE/WASHER  
 ATOP  
 SET P.K./WASHER  
 10/7/93, RCC  
 FD P.K./WASHER  
 SV125  
 9/15/09  
 FD P.K./WASHER  
 8/12/10, KPM  
 SET P.K./WASHER  
 FIN125  
 10/21/10 KPM  
 FD P.K./ WASHER  
 REFA11  
 4/18/19, JFO  
 8/19/19, JFO  
 REF11A  
 7/17/23, TDN  
 SET MAG/WASHER  
 10/18/23, DSA

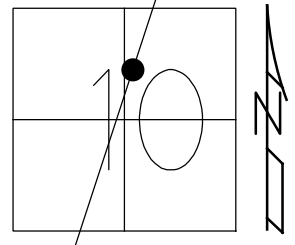


O.D.O.T. DISTRICT 2 SURVEY OFFICE (USE ONLY)

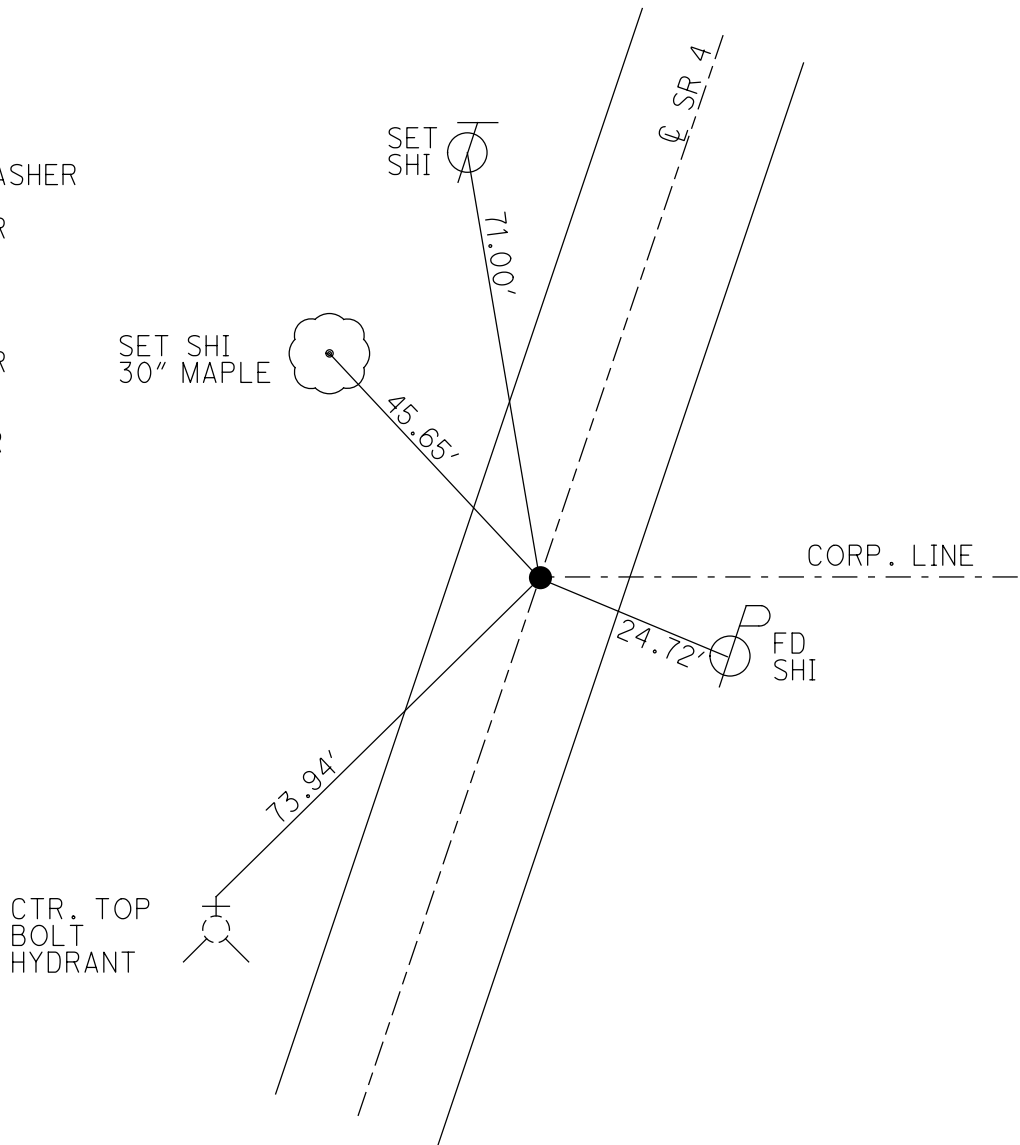
PERSONNEL \_\_\_\_\_ REFERENCE NO. 11 A SHEET 27 OF 41  
 NOTES FINTEL DATE 8/12/10 ROUTE SR 4  
 H.C. GOLDBERG WEATHER SUNNY COUNTY SENECA  
 R.C. HARBAUGH TEMP. 85° TOWNSHIP VENICE  
 \_\_\_\_\_ SECTION 10  
 DWG BY NASON PID 107060 T 1 N R 17 E

TYPE MONUMENT P.K./WASHER  
 ON SURFACE - ~~BELOW~~ ON  
 OFFSET  $\odot$  PAVEMENT 1' ~~LT~~ : RT  
9.5' TO RT EDGE PAVEMENT  
 STATION: 260+70.77

HORZ.DATUM: NAD83 2011 GEOID: 2012A  
 GRID: NORTHING: 508071.042 EASTING: 1861113.056



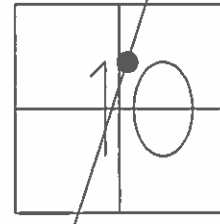
RECORD:  
 STA: 260+77  
 FD R.R.SPIKE  
 5" DOWN  
 7/31/1974  
 SET SM.SPIKE/WASHER  
 ATOP  
 SET P.K./WASHER  
 10/7/93, RCC  
 FD P.K./WASHER  
 SV125  
 9/15/09  
 SET P.K./WASHER  
 FIN125  
 10/21/10 KPM  
 FD P.K./ WASHER  
 REFA11  
 4/18/19, JFO  
 8/19/19, JFO



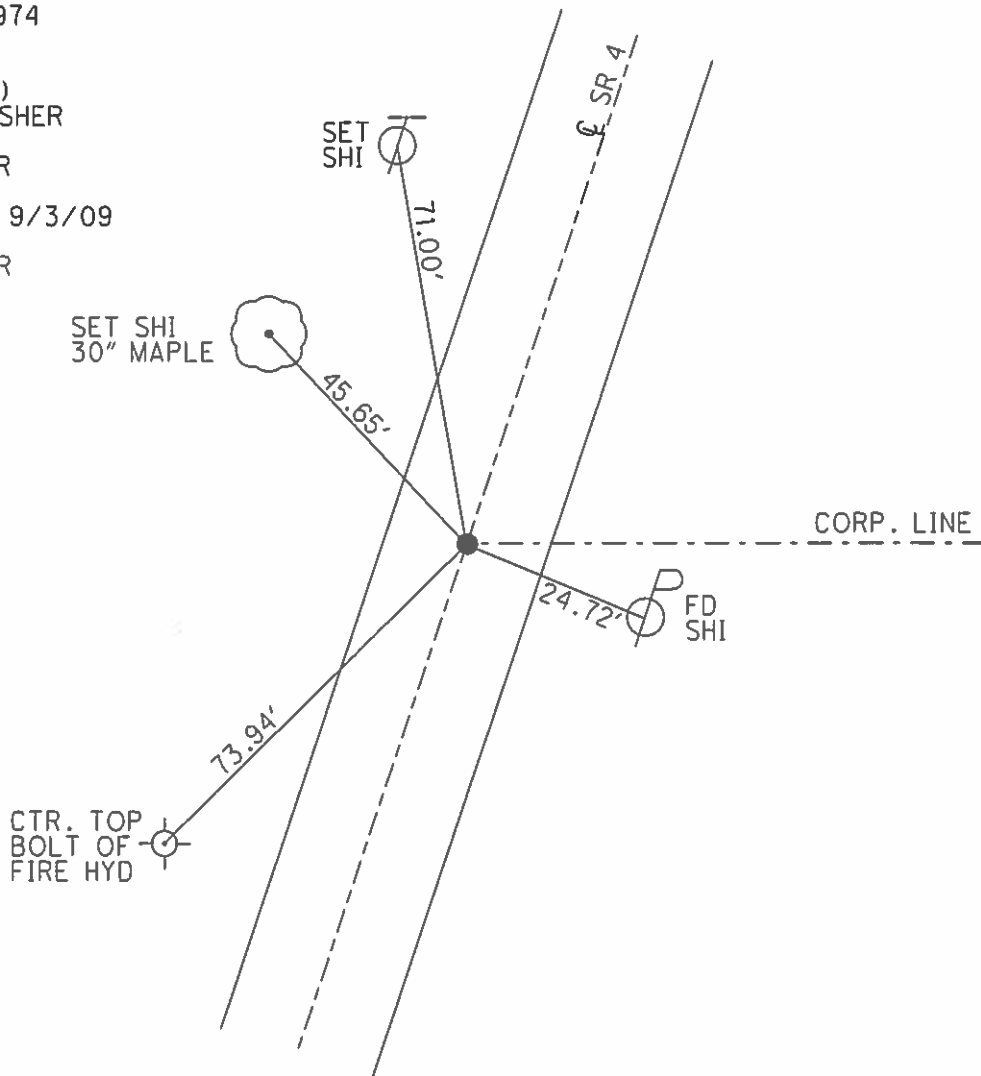
O.D.O.T. DISTRICT 2 SURVEY OFFICE (USE ONLY)

PERSONNEL	REFERENCE NO.	<u>11 A</u>	SHEET	<u>27</u>	OF	<u>41</u>
NOTES	<u>FINTEL</u>	DATE	<u>8/12/10</u>	ROUTE	<u>SR 4</u>	
H.C.	<u>GOLDBERG</u>	WEATHER	<u>SUNNY</u>	COUNTY	<u>SENECA</u>	
R.C.	<u>HARBAUGH</u>	TEMP.	<u>85°</u>	TOWNSHIP	<u>VENICE</u>	
				SECTION	<u>10</u>	
				T	<u>1</u>	R
					<u>17</u>	<u>E</u>

TYPE MONUMENT P.K./WASHER  
 ON SURFACE - ~~BELOW~~ ON  
~~LEFT~~ - C PAV'T - RIGHT 1'  
9.5' TO RT EDGE PAVEMENT  
 S.L.M. 260+70.77 (ATTICA CORP.LINE EAST)  
 GRID: NORTHING: 508071.088 EASTING: 186113.025



RECORD: 12/18/1974  
 STA: 260+77  
 FD R.R.SPIKE 5"  
 DOWN (7/31/1974)  
 SET SM.SPK./WASHER  
 ATOP  
 SET P.K./WASHER  
 10/7/1993 RCC  
 FD P.K./WASHER 9/3/09  
 SV125 9/15/09  
 SET P.K./WASHER  
 GPS FIN 125  
 10/21/10 KPM



# O.D.O.T. DISTRICT 2 SURVEY OFFICE

PERSONNEL

REFERENCE NO. 11A

SHEET 25 OF 50

NOTES CHENEY

H.C. RIPPLE

R.C. SARBOUR

GEYMAN

DATE 7-27-1993

WEATHER FAIR

TEMP. 85°

ROUTE #4

COUNTY SENECA

TOWNSHIP VENICE

SECTION 10

T. IN R. 18E

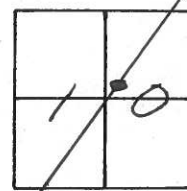
TYPE MONUMENT R.P. SPK.

ON SURFACE - ~~BELOW~~ ON

~~15' TO LT. EDGE PAV'T.~~ ON

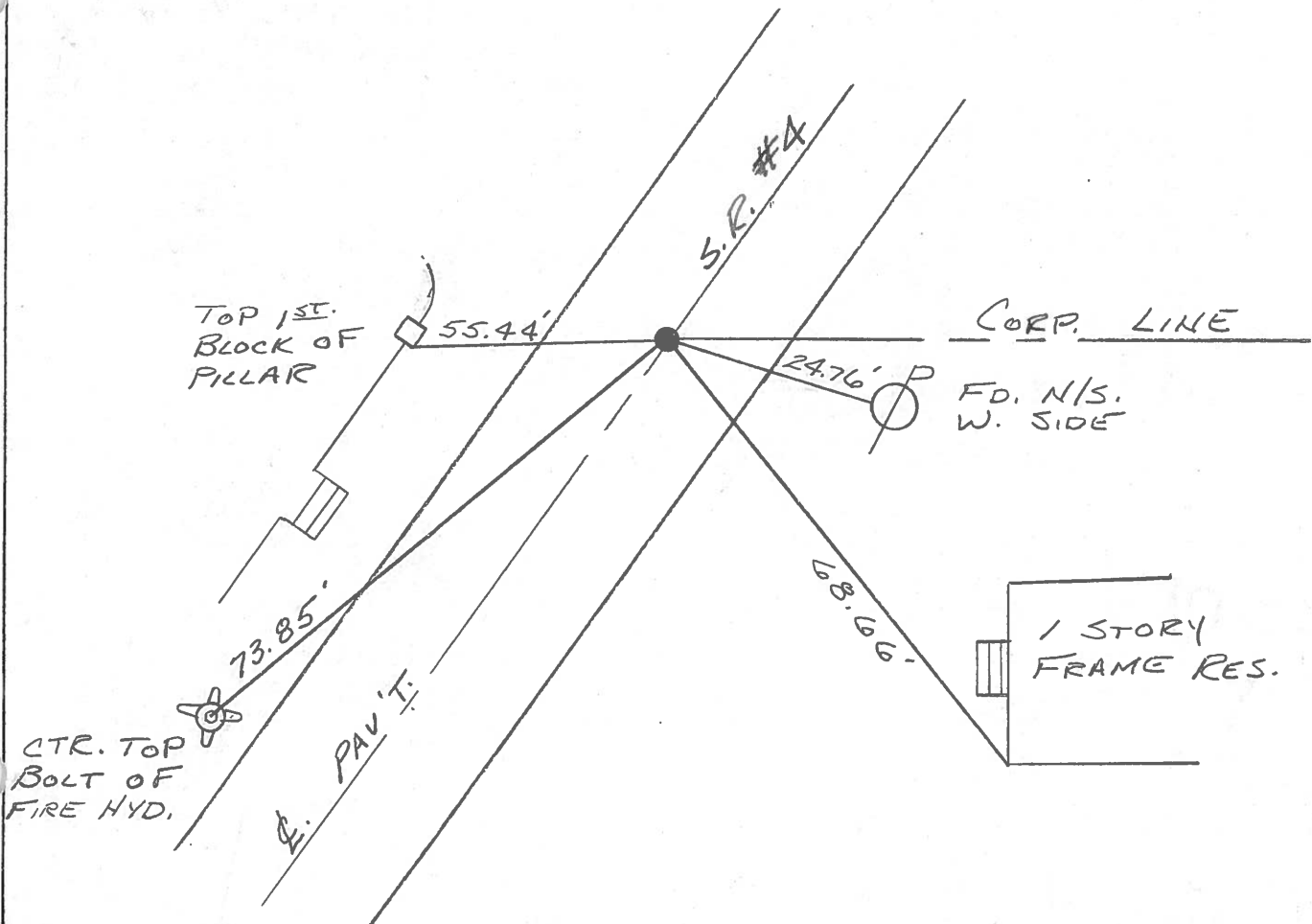
15' TO LT. EDGE PAVEMENT

S.L.M. 261+34 (ATTICA CORP. LINE EAST)



RECORD: 12-18-1974  
 STA. 260+77  
 FD. R.P. SPK. 5" DOWN (7-31-74)  
 SET SMALL SPK/WASHER ATOP

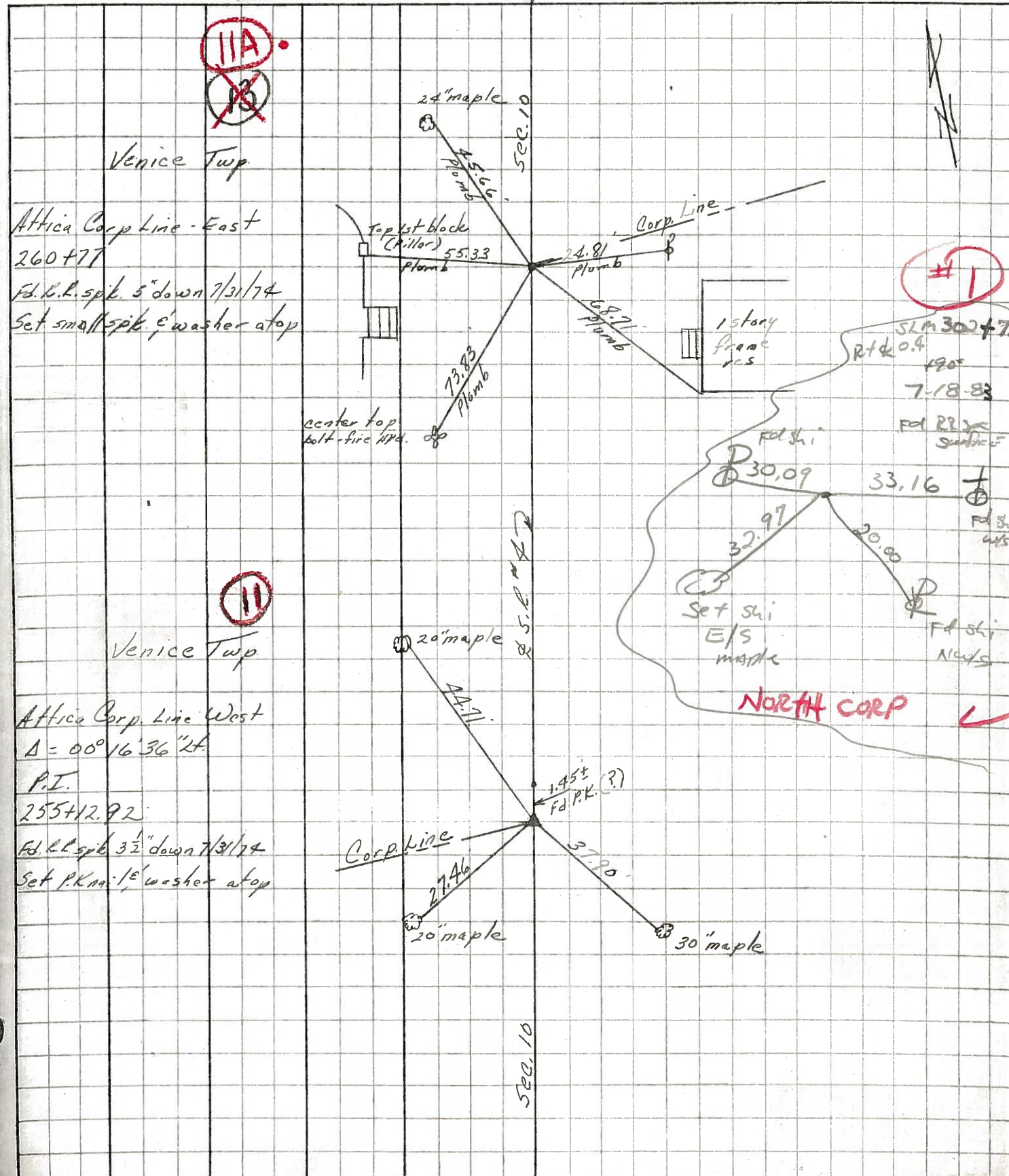
SET PK/WASHER  
 10-7-1993  
 RCC



PERSONNEL	TITLE	PERSONNEL	TITLE
Cronin		Schneider	
Ash		Messer	
Ripple		Barbour	
Geymer			

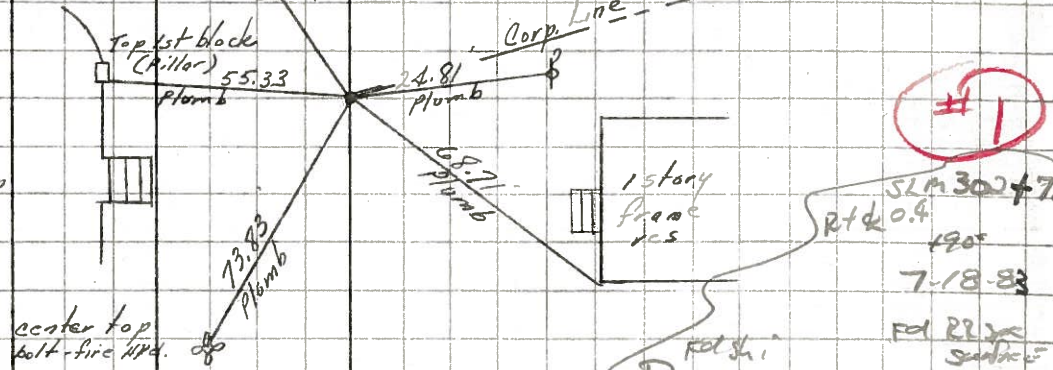
COUNTY Seneca DATE 12/18/74  
 S. R. # 4 WEATHER overcast  
 SEC. Crawford Co Line-North TEMP. 25°

DESCRIPTION Ties for Control Points LEFT CENTER LINE RIGHT JOB NO.



Venice Twp

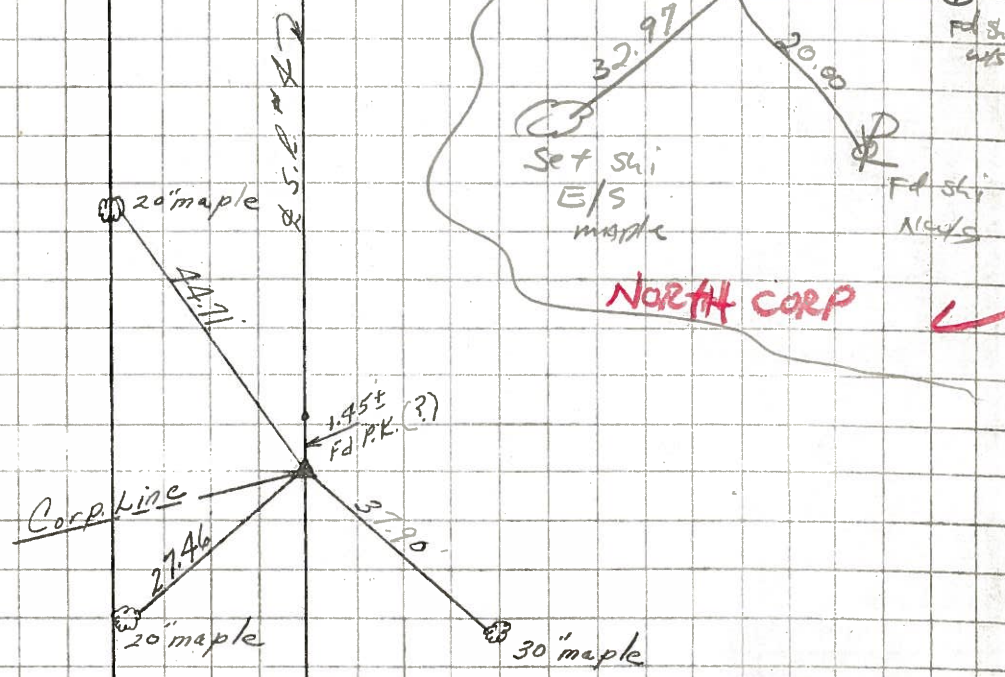
Attica Corp Line - East  
 260+77  
 Fd. L.L. spike 5" down 7/31/74  
 Set small spike & washer atop



#1  
 SLM 300+7  
 Rtd 0.4  
 120°  
 7-18-83  
 Fd. P.K. surface

Venice Twp

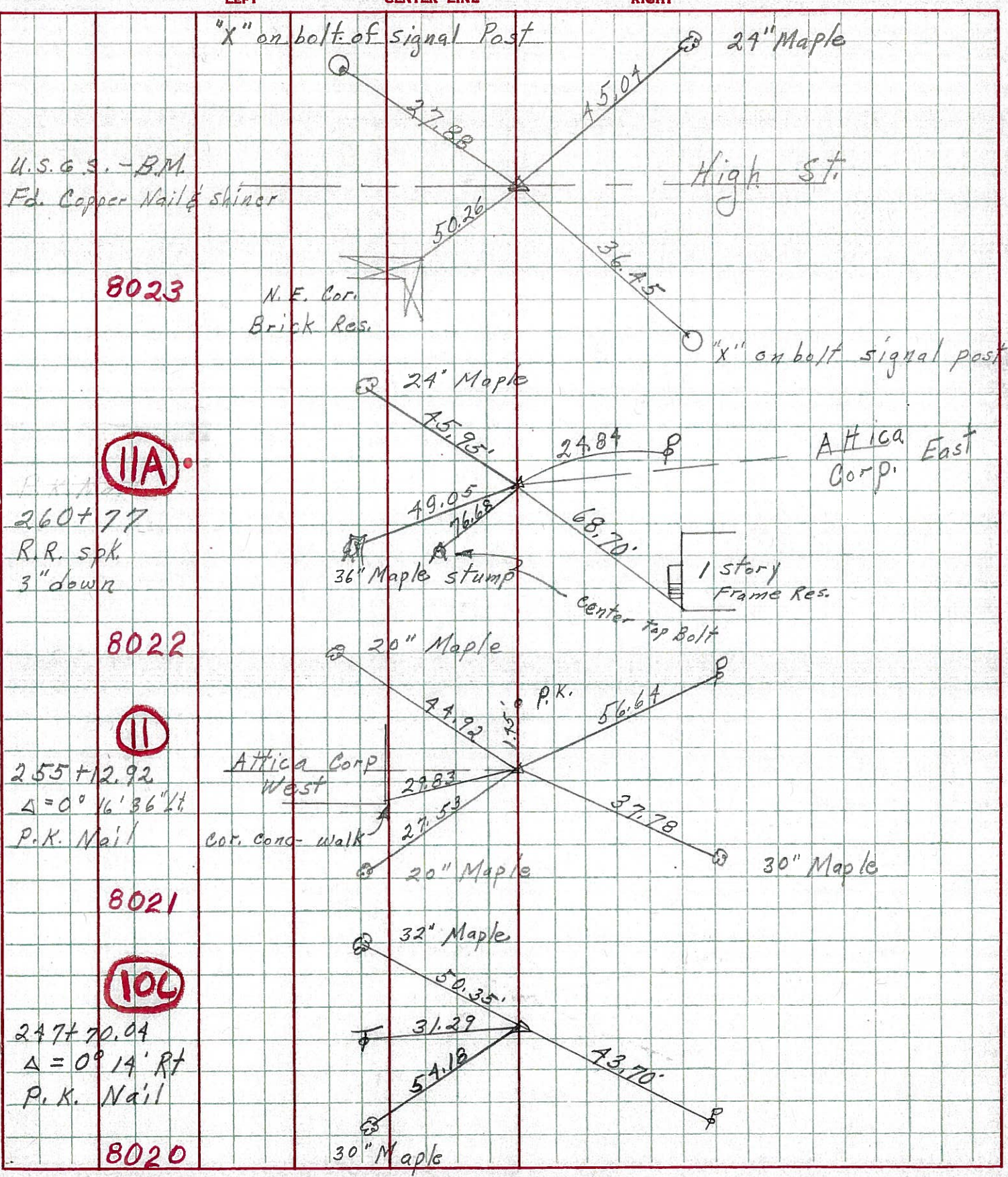
Attica Corp. Line West  
 $\Delta = 00^\circ 16' 36''$  Lt.  
 P.I.  
 255+12.92  
 Fd. L.L. spike 3 1/2" down 7/31/74  
 Set P.K. with 1" washer atop



NORTH CORP

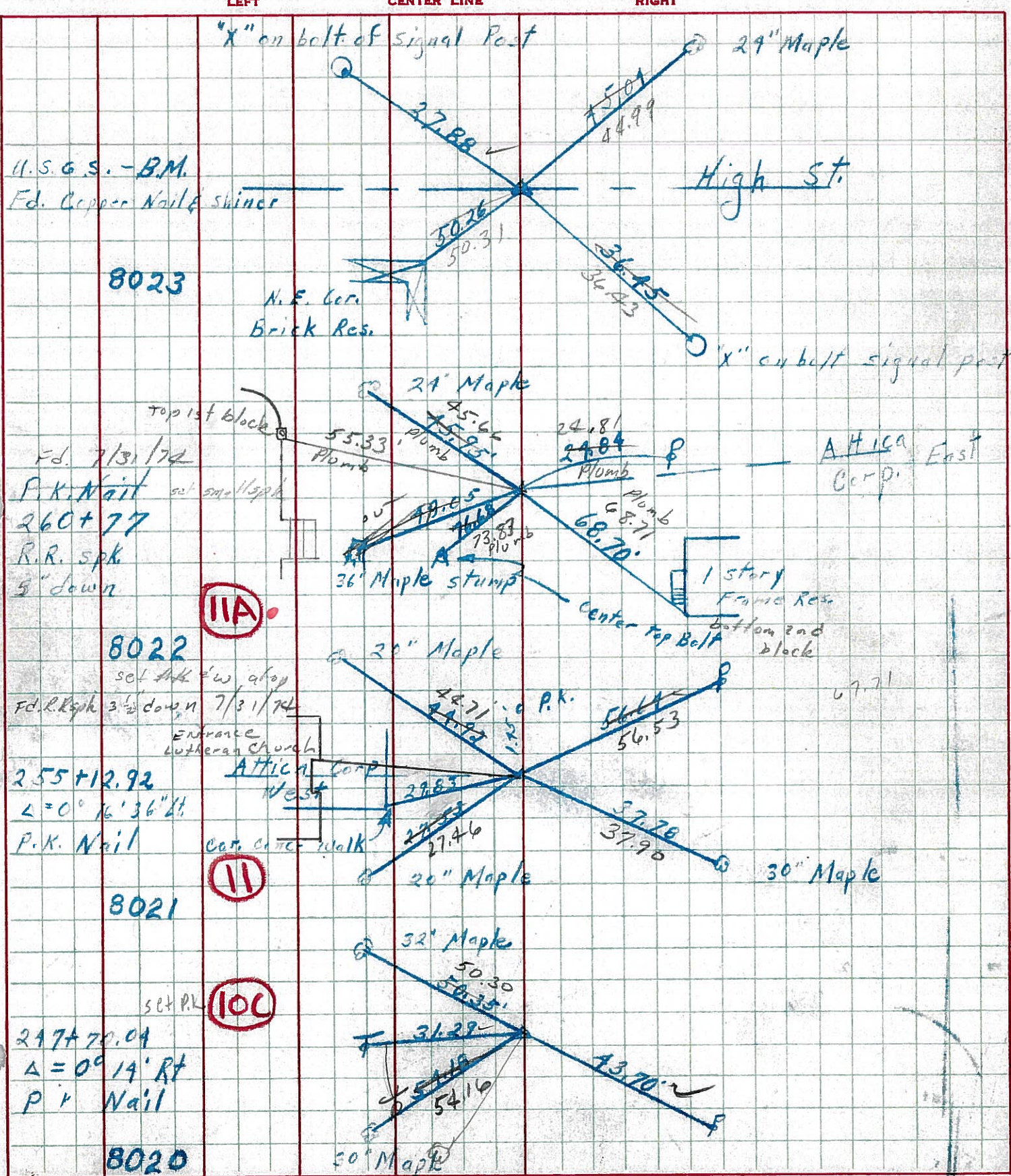
500.10

PERSONNEL TITLE PERSONNEL TITLE COUNTY Seneca DATE 10-1-68  
 Mosser \_\_\_\_\_ S. R. 4 WEATHER Fair  
 Barbour \_\_\_\_\_ SEC. \_\_\_\_\_ TEMP. 75°  
 Redding \_\_\_\_\_ DESCRIPTION Ties for Control Points JOB NO. \_\_\_\_\_



PERSONNEL	TITLE	PERSONNEL	TITLE	COUNTY	DATE
Schneider		Potts		Seneca	10-1-68
Mosser				S. R. 4	WEATHER Fair
Barbour				SEC.	TEMP 75°
Redding					

DESCRIPTION Ties for Control Points JOB NO. \_\_\_\_\_



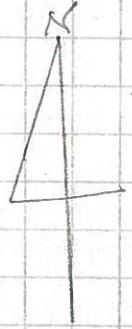
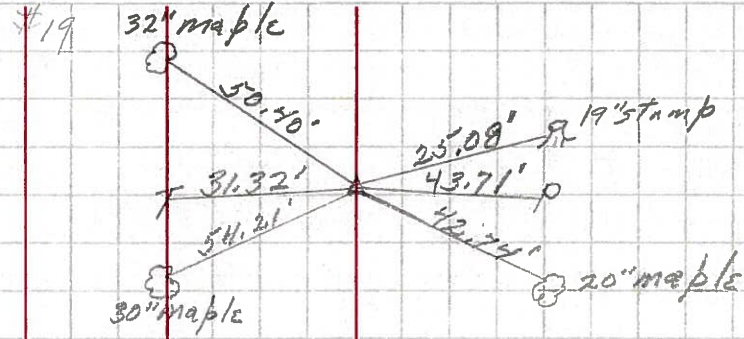
PERSONNEL	TITLE	PERSONNEL	TITLE	COUNTY	DATE
KrABILL				Seneca	
Kowaleski				S. R. 4	WEATHER
Brooks				SEC.	TEMP.

DESCRIPTION	LEFT	CENTER LINE	RIGHT	JOB NO.
-------------	------	-------------	-------	---------

247+70.04  
 P.I.  $\Delta = 0^{\circ}14'00''$  RT  
 P.K. nail

**IOG**

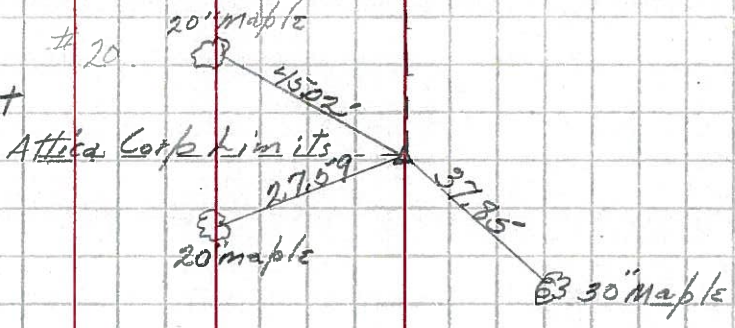
1-17-64



255+12.92  
 P.I.  $\Delta = 0^{\circ}16'36''$  RT  
 P.K. nail

**II**

1-17-64



260+77

P.K. nail

**IIA**

1-17-64

