

O.D.O.T. DISTRICT 2 SURVEY OFFICE (USE ONLY)

PERSONNEL

REFERENCE NO. 13

SHEET 29 OF 56

NOTES RHOADES
 H.C. AUBLE
 R.C. ASTON
NIESE

DATE 10/18/23
 WEATHER CLOUDY
 TEMP. 59°

ROUTE SR 4
 COUNTY SENECA
 TOWNSHIP VENICE
 SECTION 3
 T 1 N R 17 E

DWG BY RHOADES PID 101241

TYPE MONUMENT MAG/WASHER

ON SURFACE - ~~BELOW~~ ON

OFFSET Q PAVEMENT ON LT : RT

11.0' TO RT EDGE PAVEMENT

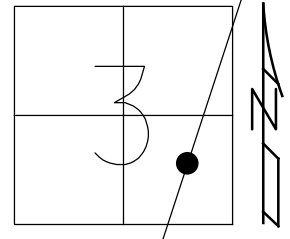
STATION: 302+35.63 (OLD CORP. LINE)

HORZ. DATUM: NAD83 2011

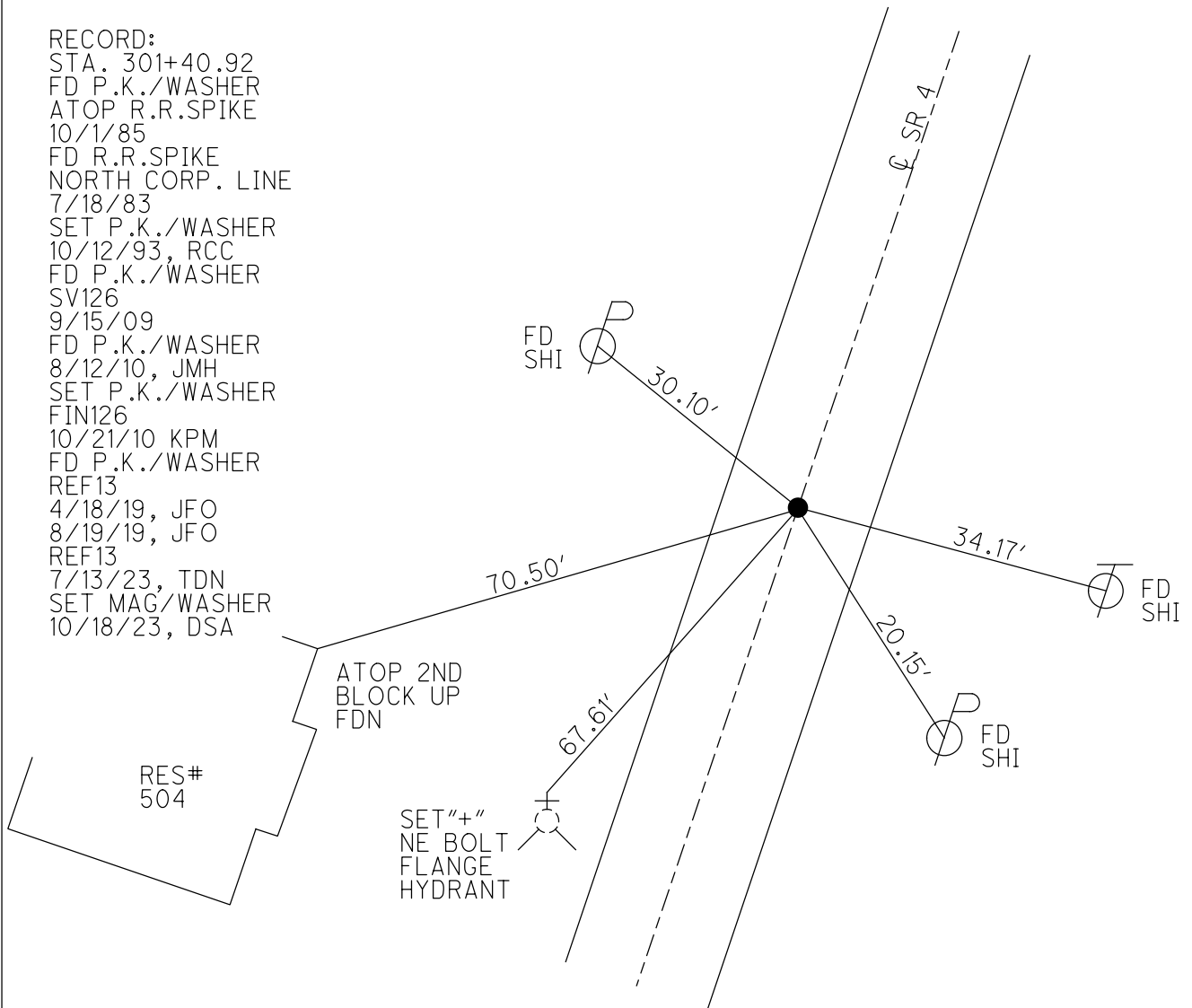
GEOID: NAVD88 2018

GRID: NORTHING: 511992.688

EASTING: 1862515.586



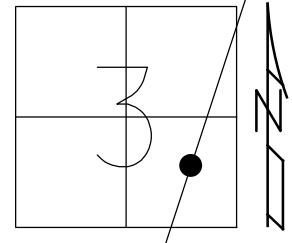
RECORD:
 STA. 301+40.92
 FD P.K./WASHER
 ATOP R.R.SPIKE
 10/1/85
 FD R.R.SPIKE
 NORTH CORP. LINE
 7/18/83
 SET P.K./WASHER
 10/12/93, RCC
 FD P.K./WASHER
 SV126
 9/15/09
 FD P.K./WASHER
 8/12/10, JMH
 SET P.K./WASHER
 FIN126
 10/21/10 KPM
 FD P.K./WASHER
 REF13
 4/18/19, JFO
 8/19/19, JFO
 REF13
 7/13/23, TDN
 SET MAG/WASHER
 10/18/23, DSA



O.D.O.T. DISTRICT 2 SURVEY OFFICE (USE ONLY)

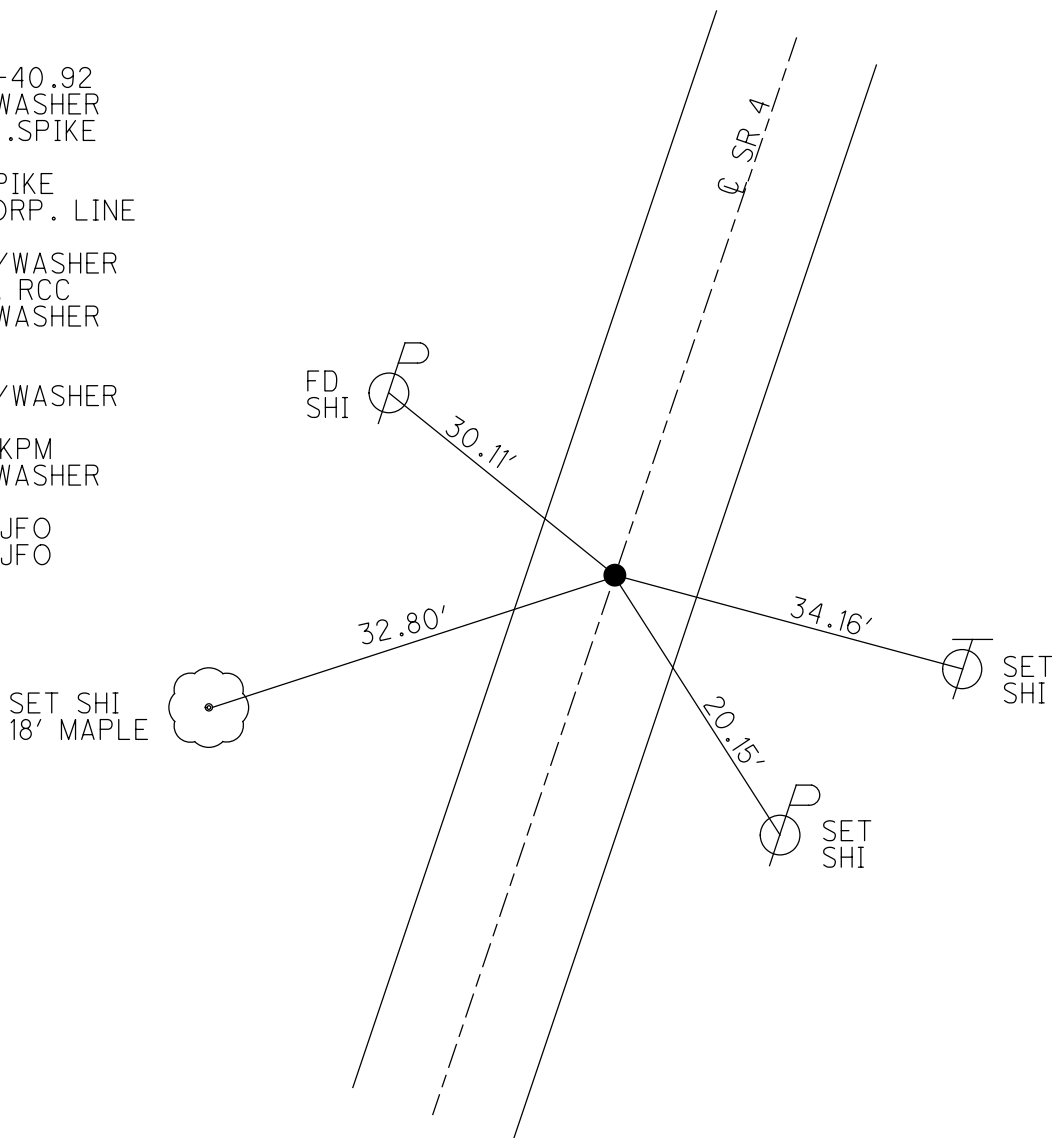
PERSONNEL _____ REFERENCE NO. 13 SHEET 29 OF 41
 NOTES FINTEL DATE 8/12/10 ROUTE SR 4
 H.C. GOLDBERG WEATHER CLOUDY COUNTY SENECA
 R.C. HARDBAUGH TEMP. 87° TOWNSHIP VENICE
 DWG BY NASON PID 107060 SECTION 3
 T 1 N R 17 E

TYPE MONUMENT P.K./WASHER
 ON SURFACE - ~~BELOW~~ ON
 OFFSET Q PAVEMENT ON LT : RT
11.0' TO RT EDGE PAVEMENT
 STATION: 302+35.63 (OLD CORP. LINE)



HORIZ.DATUM: NAD83 2011 GEOID: 2012A
 GRID: NORTHING: 511992.679 EASTING: 1862515.572

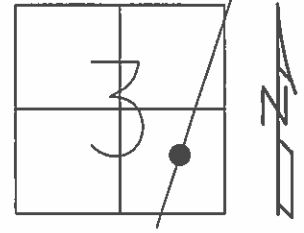
RECORD:
 STA. 301+40.92
 FD P.K./WASHER
 ATOP R.R.SPIKE
 10/1/85
 FD R.R.SPIKE
 NORTH CORP. LINE
 7/18/83
 SET P.K./WASHER
 10/12/93, RCC
 FD P.K./WASHER
 SV126
 9/15/09
 SET P.K./WASHER
 FIN126
 10/21/10 KPM
 FD P.K./WASHER
 REF13
 4/18/19, JFO
 8/19/19, JFO



O.D.O.T. DISTRICT 2 SURVEY OFFICE (USE ONLY)

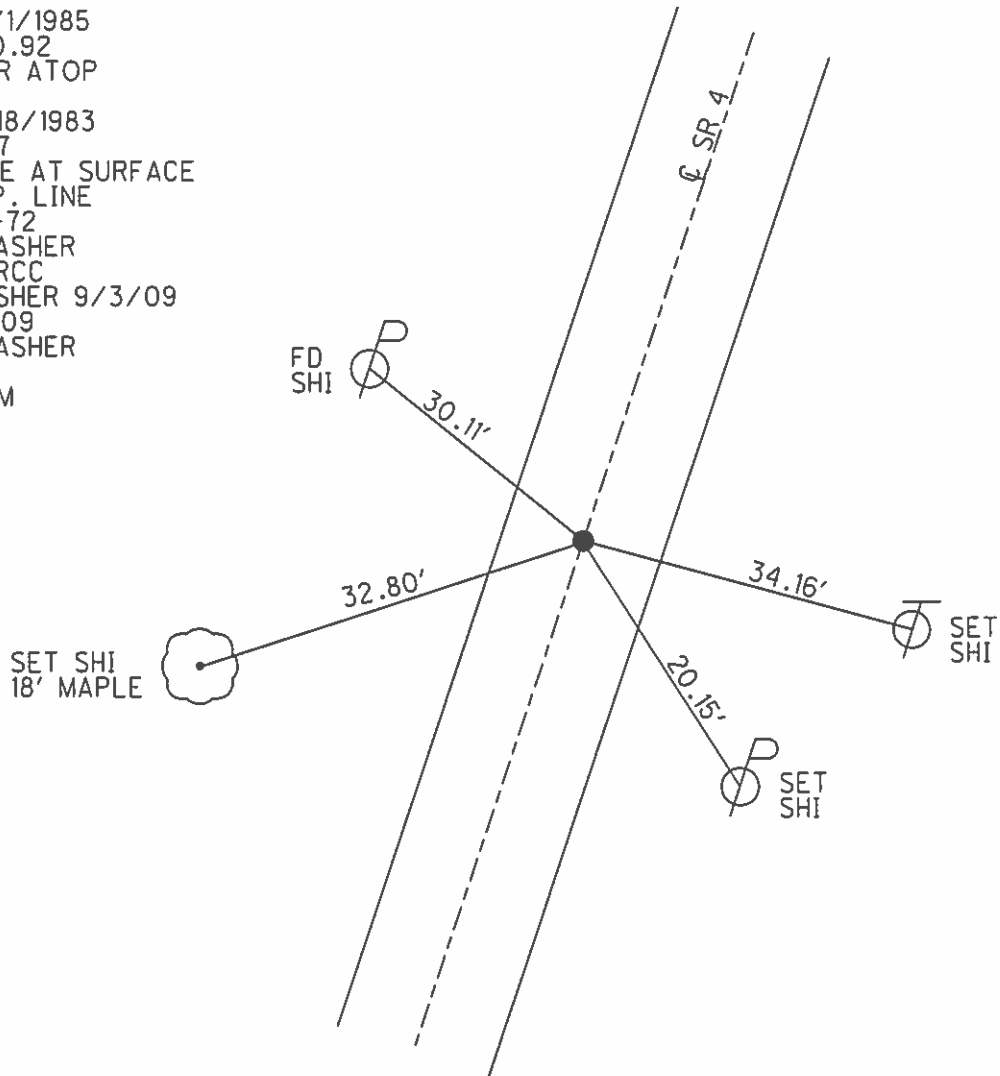
PERSONNEL _____ REFERENCE NO. 13 SHEET 29 OF 41
 NOTES FINTEL DATE 8/12/10 ROUTE SR 4
 H.C. GOLDBERG WEATHER CLOUDY COUNTY SENECA
 R.C. HARBAUGH TEMP. 87° TOWNSHIP VENICE
 _____ SECTION 3
 _____ T 1 N R 17 E

TYPE MONUMENT P.K./WASHER
 ON SURFACE - ~~BELOW~~ ON _____
 LEFT - ☉ PAV'T - RIGHT ON _____
11.0' TO RT EDGE PAVEMENT
 S.L.M. 302+35.63 (OLD CORP. LINE)



GRID: NORTHING: 511992.717 EASTING: 1862515.453

RECORD: 10/1/1985
 STA. 301+40.92
 P.K./WASHER ATOP
 R.R.SPIKE
 RECORD: 7/18/1983
 STA. 260+77
 FD R.R.SPIKE AT SURFACE
 NORTH CORP. LINE
 S.L.M. 302+72
 SET P.K./WASHER
 10/12/1993 RCC
 FD P.K./WASHER 9/3/09
 SV126 9/15/09
 SET P.K./WASHER
 GPS FIN 126
 10/21/10 KPM



O.D.O.T. DISTRICT 2 SURVEY OFFICE

PERSONNEL

REFERENCE NO. 13

SHEET 26 OF 50

NOTES CHENEY

H.C. RIPPLE

DATE 10-21-1992

ROUTE #4

R.C. BARBOUR

WEATHER CLOUDY

COUNTY SENECA

GEYMAN

TEMP. 40°

TOWNSHIP VENICE

SECTION 3

T1 N R 17 E

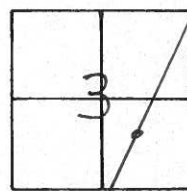
TYPE MONUMENT PK/WASHER

ON SURFACE - ~~BELOW~~ ON

~~LEFT~~ - PAV'T. - RIGHT 0.5'

10.5' TO RT. EDGE PAVEMENT

S.L.M. 303+19 (OLD CORP. LINE)



RECORD: 10-1-1985

STA. 301+40.92

PK/WASHER ATOP R.R. SPK.

RECORD: 7-18-1983

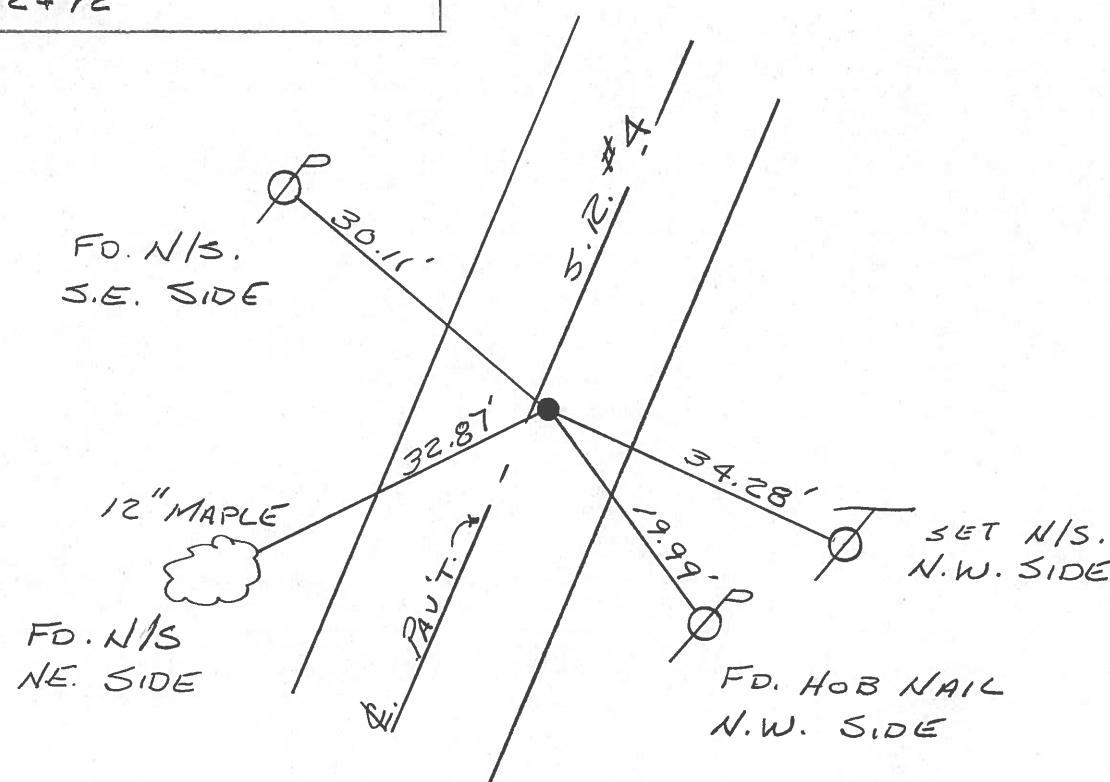
STA. 260+77

FD. R.R. SPK. @ SURFACE

NORTH CORP. LINE

SLM. 302+72

SET PK/WASHER
 10-12-1993
 RCC



O.D.O.T. DISTRICT 2 SURVEY OFFICE

PERSONNEL _____

REFERENCE NO. 13

SHEET 1 OF _____

NOTES CROWN

H.C. RIPPLE

R.C. BARBOUR

GEYMAN

DATE 10/1/85

WEATHER OVERCAST

TEMP. 40

ROUTE #4

COUNTY SENECA

TOWNSHIP VENICE

SECTION 3

T. 1 N. R. 17 E.

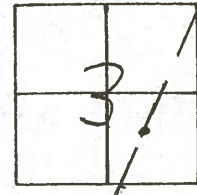
TYPE MONUMENT P.K. WASHER AT OP. R.R. S.P.A.K.E.

ON SURFACE - BELOW ON SURFACE

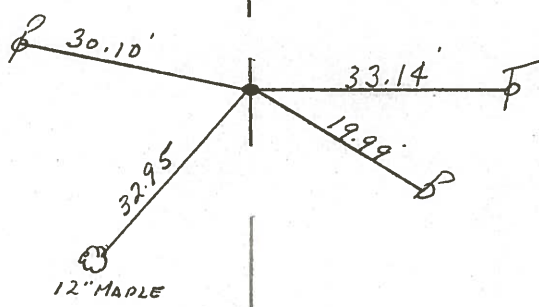
LEFT - € PAV'T. - RIGHT 0.5' RT. & Pav't.

TO _____ EDGE PAVEMENT

S.L.M. _____



301 + 40.92



R. S.P. #4

County SENECA S.R. 4

Date 7-18-83

Township VENICE

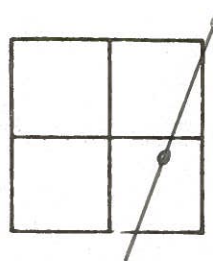
Weather HAZY

Section 3

Temp. +90°

T N, R E

Personnel HOFFMAN



HOUSEHOLDER

LO ENRKE

BARNHISEL

#13

NORTH CORP. LINE ATTICA

260+77

FD. R.R. SPIKE @ SURFACE

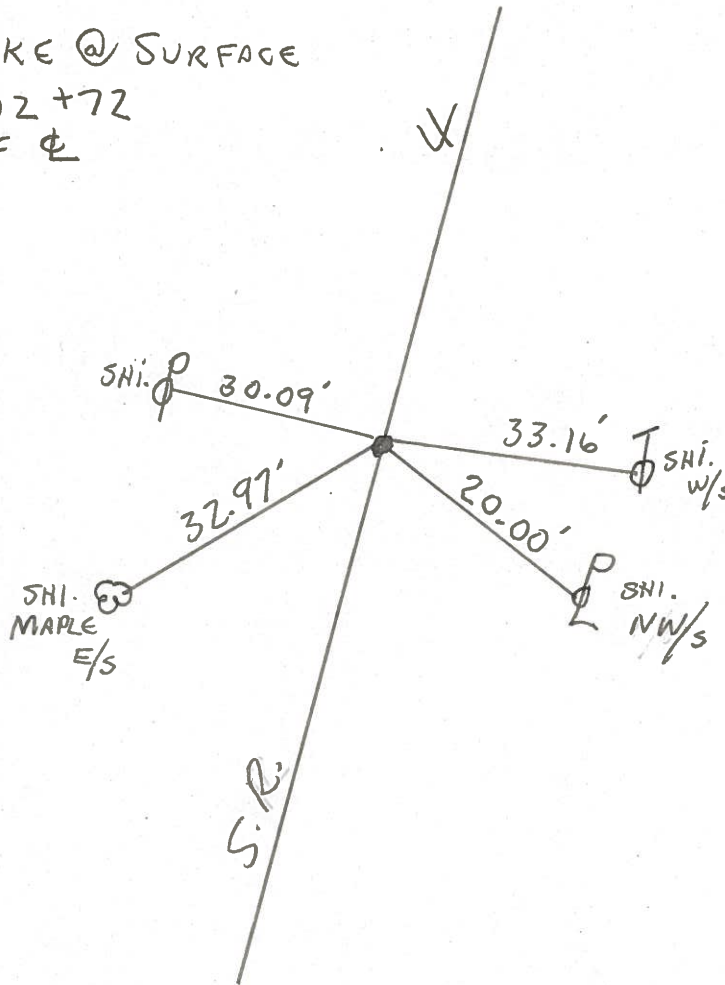
S.L.M. 302+72

0.4' RT. OF Φ

SET P.K./WASHER

11-8-83

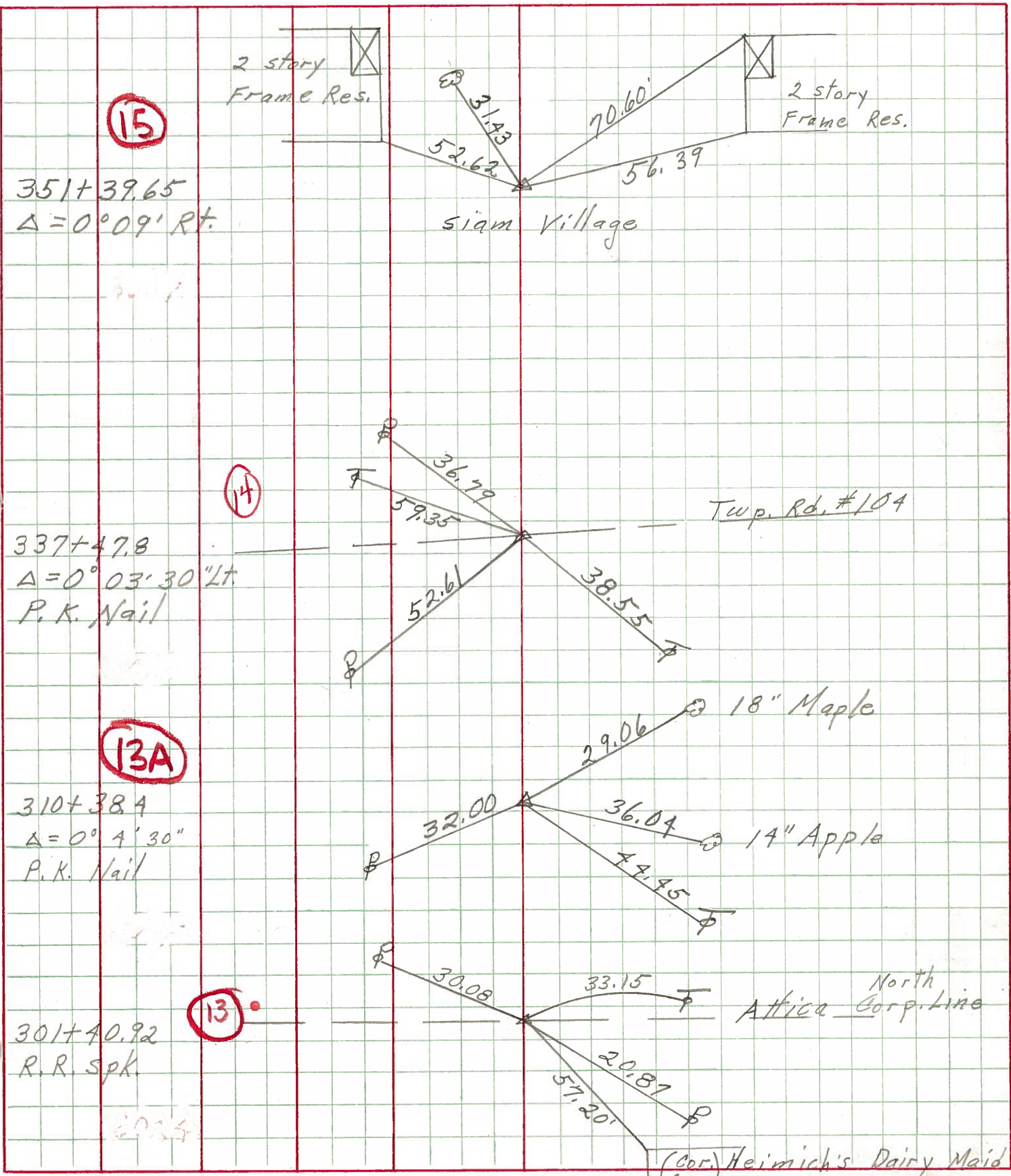
S.W.H.



PERSONNEL TITLE PERSONNEL TITLE
 Schneider _____ Potts _____
 Mosser _____ _____
 Barbour _____ _____
 Redding _____ _____

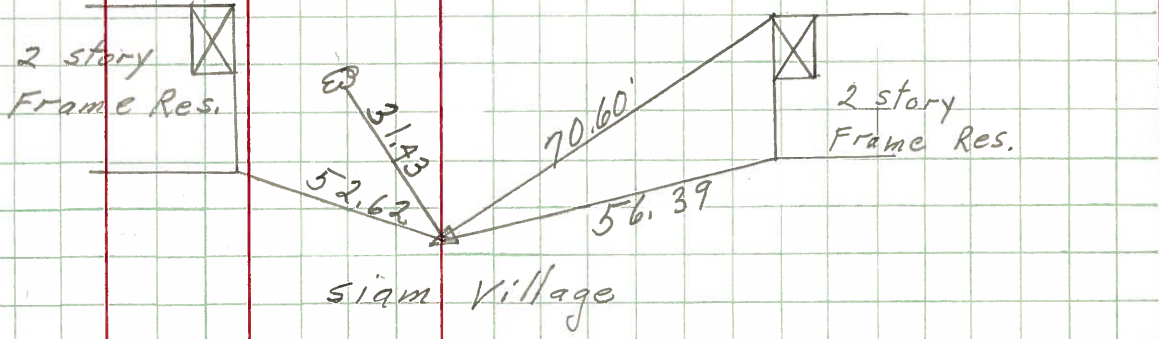
COUNTY Seneca DATE 10-1-68
 S. R. 4 WEATHER Fair
 SEC. Attica TEMP. 70°

DESCRIPTION Ties for Control Points JOB NO. _____



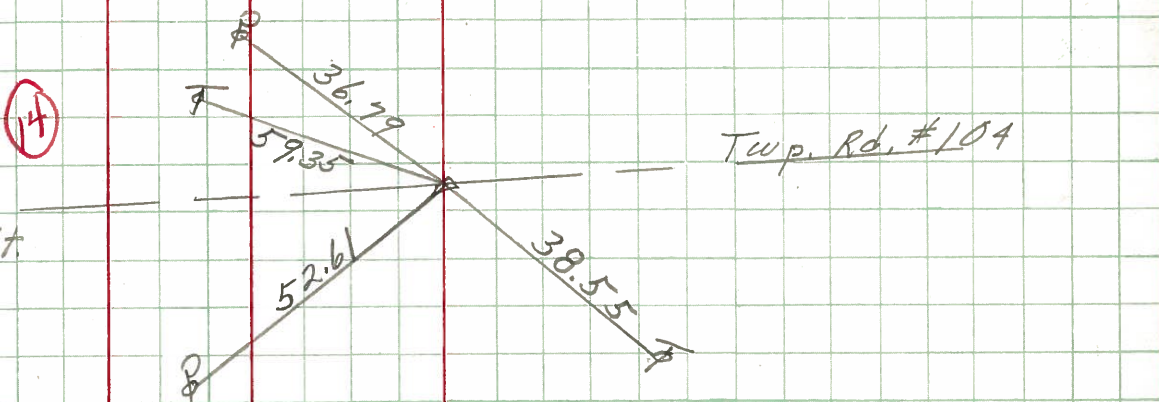
15

351+39.65
 $\Delta = 0^{\circ} 09' \text{ Rt.}$



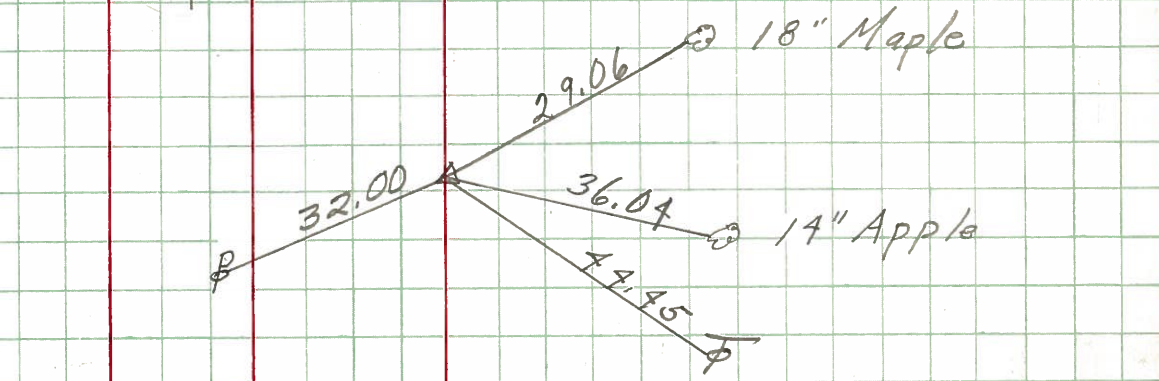
14

337+47.8
 $\Delta = 0^{\circ} 03' 30'' \text{ Lt.}$
 P.K. Nail



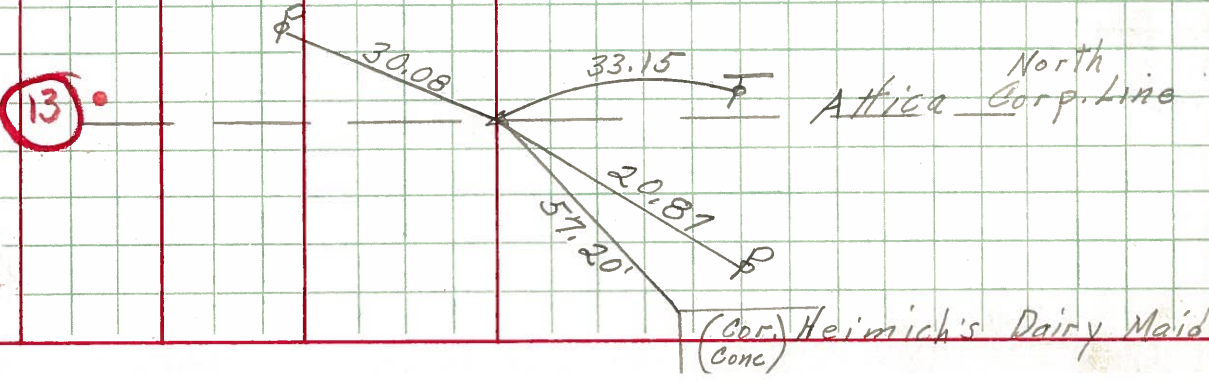
13A

310+38.4
 $\Delta = 0^{\circ} 4' 30''$
 P.K. Nail

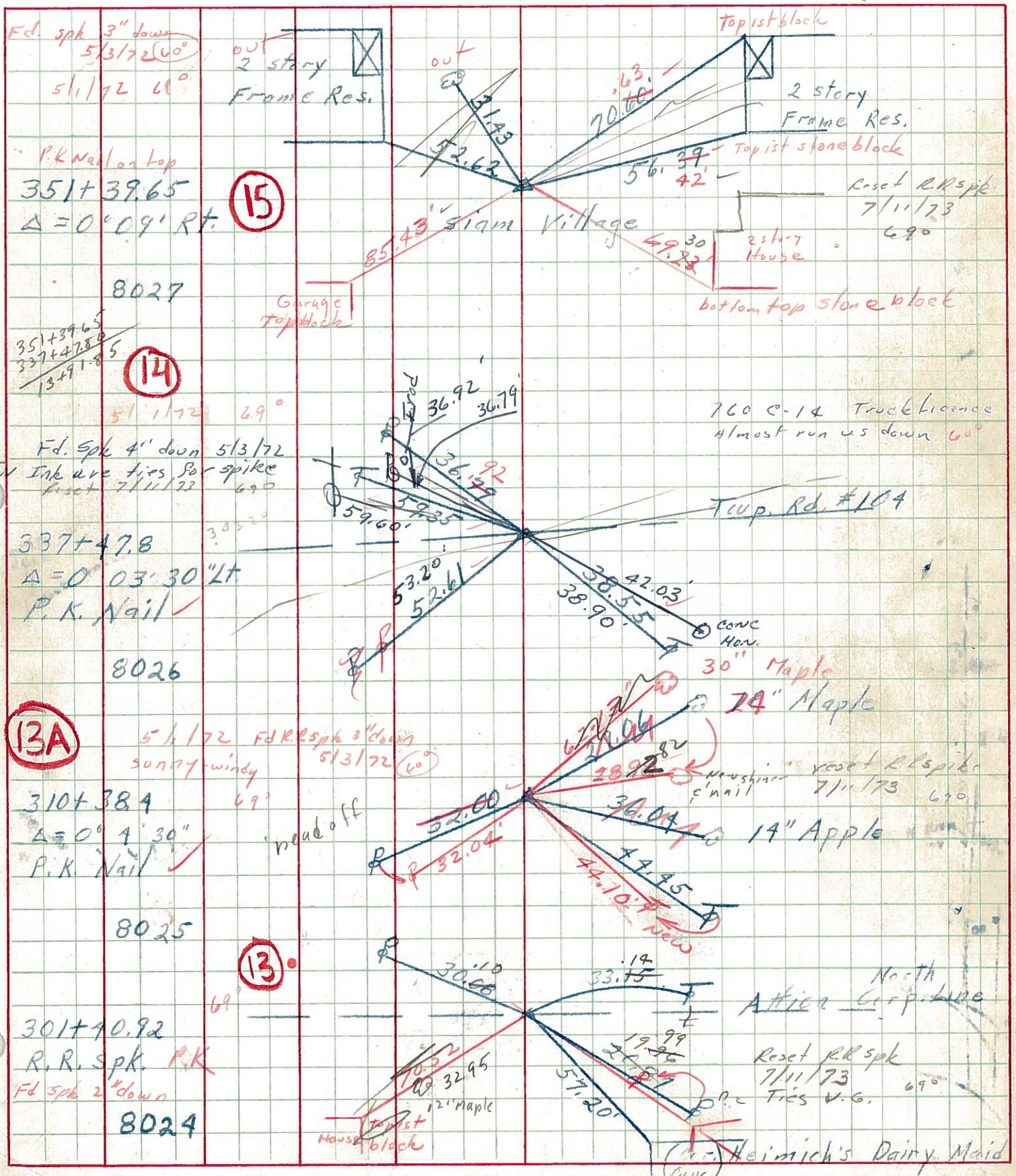


13

301+40.92
 R.R. Spk

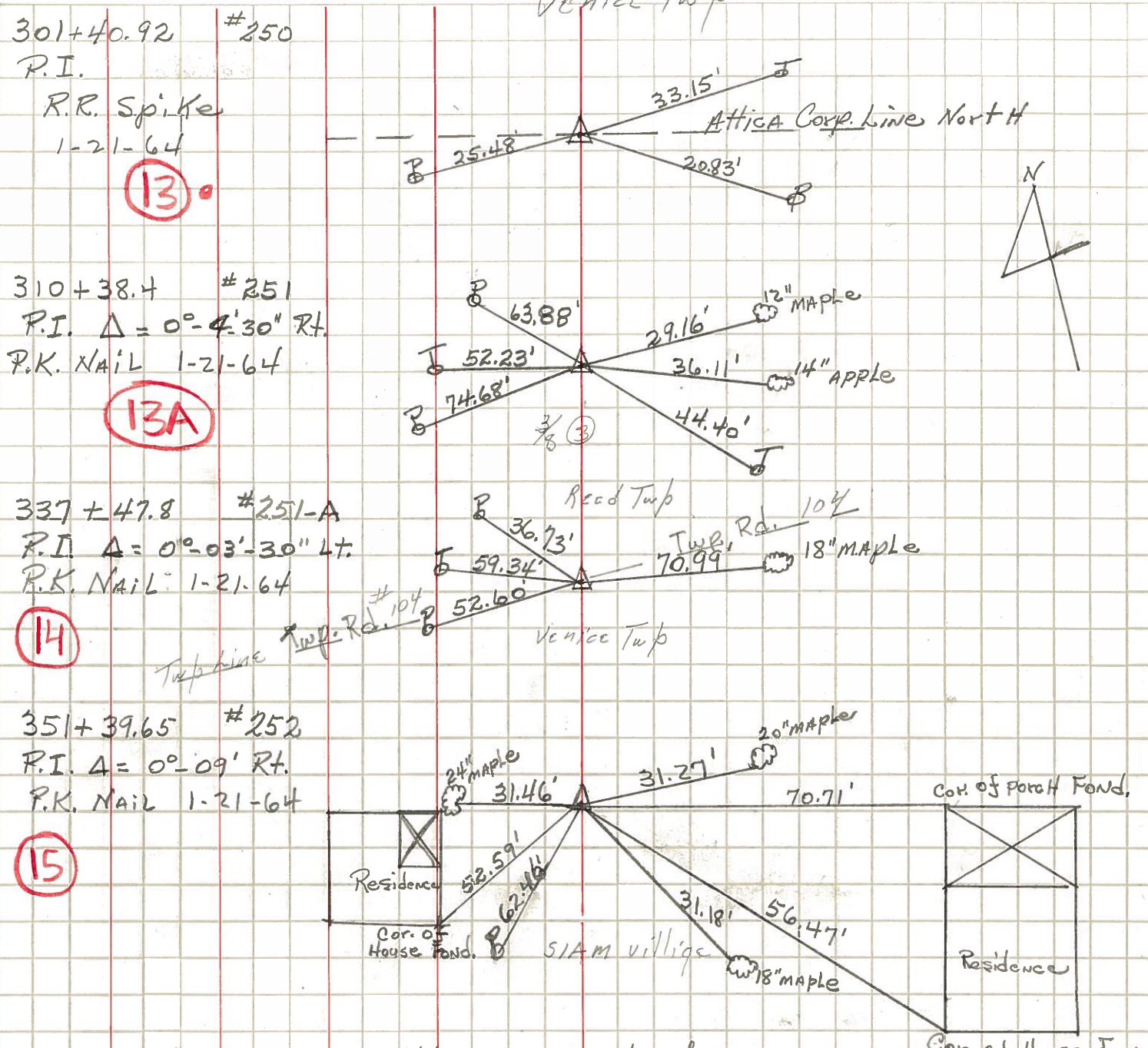


PERSONNEL TITLE PERSONNEL TITLE COUNTY Seneca DATE 10-1-68
 Schneider _____ Potts _____ S. R. 4 WEATHER Fair
 Mosser _____ _____ SEC. Attica TEMP. 70°
 Barbour _____ _____ DESCRIPTION Ties for Control Points JOB NO. _____
 Redding _____ _____



PERSONNEL	TITLE	PERSONNEL	TITLE	COUNTY	DATE
KrabiLL				Seneca	
Kowaleski				S. R. 4	WEATHER
Brooks				SEC.	TEMP.

DESCRIPTION _____ LEFT _____ CENTER LINE _____ RIGHT _____ JOB NO. _____



ALL measurements for this point only are Plumbed.