

O.D.O.T. DISTRICT 2 SURVEY OFFICE (USE ONLY)

PERSONNEL

REFERENCE NO. 13 A

SHEET 30 OF 56

NOTES RHOADES DATE 10/18/23
 H.C. AUBLE WEATHER CLOUDY
 R.C. ASTON TEMP. 59°
NIESE

ROUTE SR 4
 COUNTY SENECA
 TOWNSHIP VENICE
 SECTION 3
 T 1 N R 17 E

DWG BY RHOADES PID 101241

TYPE MONUMENT MAG/WASHER

ON SURFACE - ~~BELOW~~ ON

OFFSET \varnothing PAVEMENT ON LT : RT

10.8' TO RT EDGE PAVEMENT

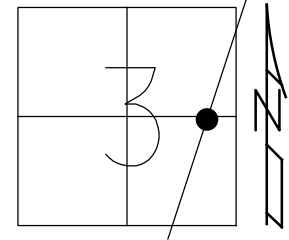
STATION: 311+32.69

HORZ.DATUM: NAD83 2011

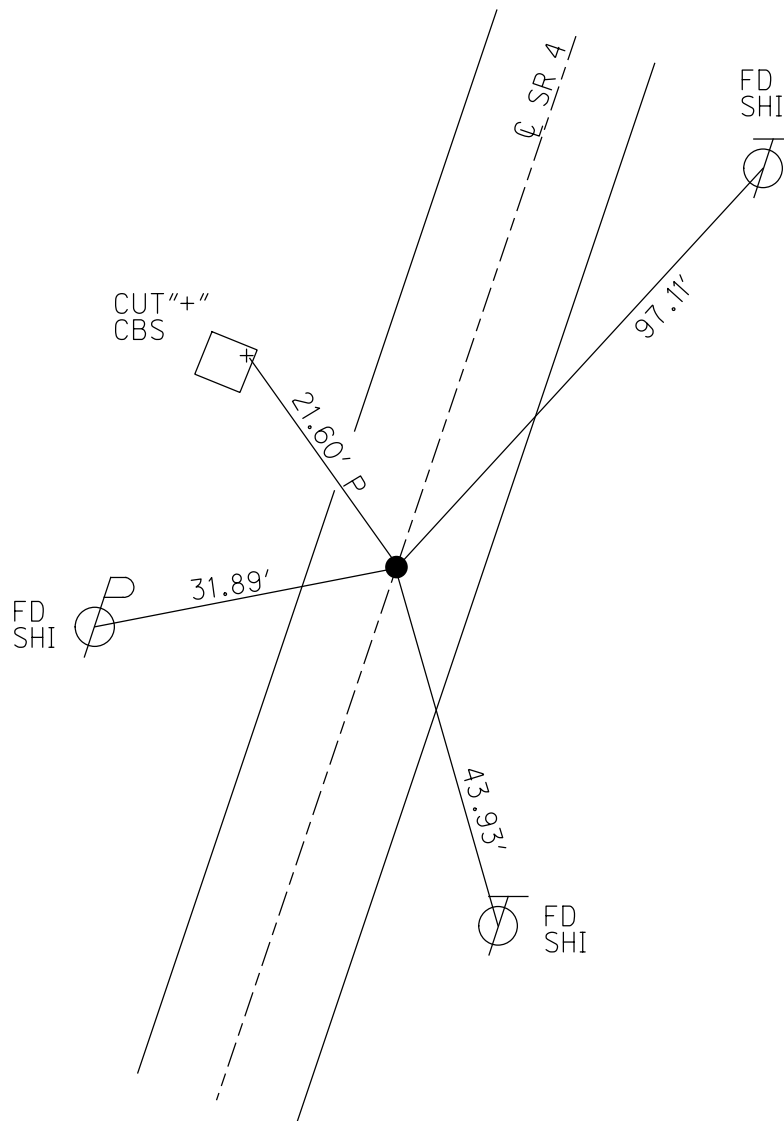
GEOID: NAVD88 2018

GRID: NORTHING: 512837.175

EASTING: 1862818.250



RECORD: P.I.
 STA. 301+38.40
 $\Delta = 0^\circ 04' 30''$ RT
 1/16/64 DATUM
 FD P.K.NAIL
 ATOP P.K.NAIL
 ATOP R.R.SPIKE
 10/1/85
 SET P.K./WASHER
 10/12/1993 RCC
 FD P.K./WASHER
 SV127
 9/15/09
 FD P.K./WASHER
 8/12/10, JMH
 SET P.K./WASHER
 FIN127
 10/21/10, KPM
 FD P.K./WASHER
 REFA13
 4/18/19, JFO
 8/19/19, JFO
 REF13A
 7/13/23, TDN
 SET MAG/WASHER
 10/18/23, DSA



O.D.O.T. DISTRICT 2 SURVEY OFFICE (USE ONLY)

PERSONNEL

REFERENCE NO. 13 A

SHEET 30 OF 41

NOTES FINTEL

DATE 8/12/10

ROUTE SR 4

H.C. GOLDBERG

WEATHER CLOUDY

COUNTY SENECA

R.C. HARDBAUGH

TEMP. 87°

TOWNSHIP VENICE

SECTION 3

DWG BY NASON

PID 107060

T 1 N R 17 E

TYPE MONUMENT P.K./WASHER

ON SURFACE - ~~BELOW~~ ON

OFFSET 0 PAVEMENT ON LT : RT

10.8' TO RT EDGE PAVEMENT

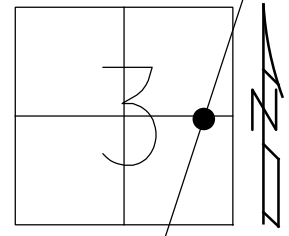
STATION: 311+32.69

HORIZ.DATUM: NAD83 2011

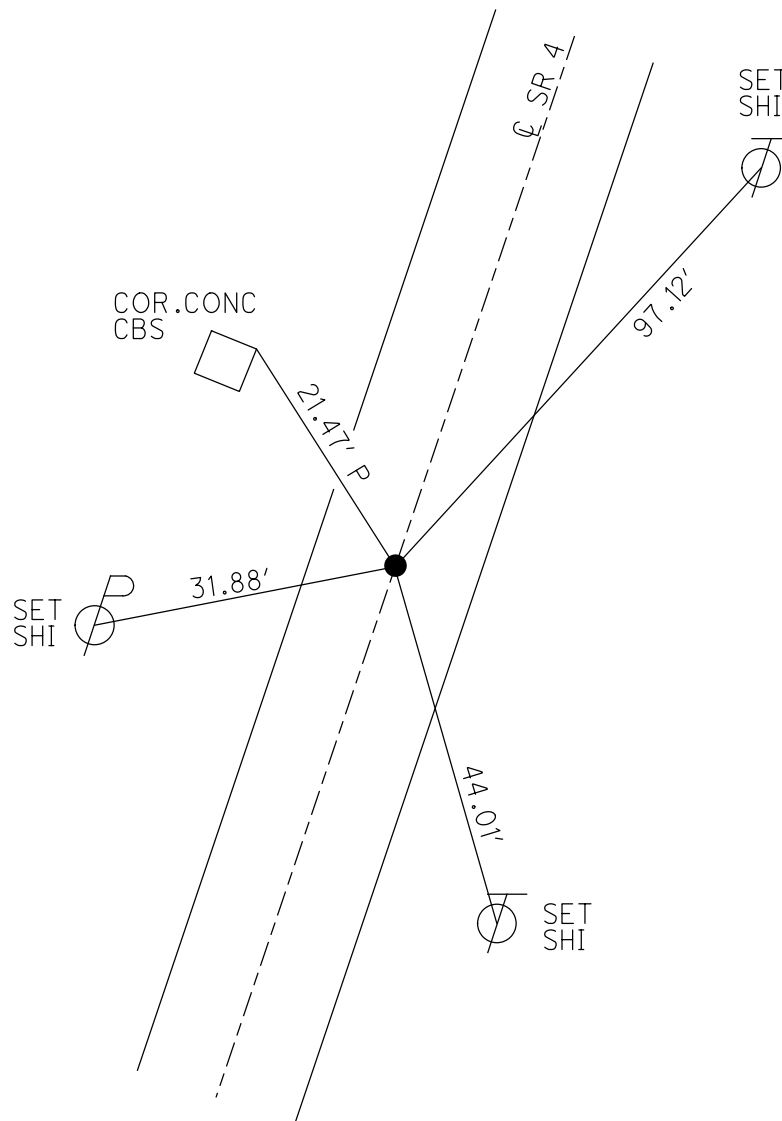
GEOID: 2012A

GRID: NORTHING: 512837.152

EASTING: 1862818.257



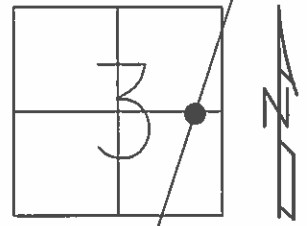
RECORD: P.I.
 STA. 301+38.40
 $\Delta = 00^{\circ} 04' 30''$ RT
 1/16/64 DATUM
 FD P.K.NAIL
 ATOP P.K.NAIL
 ATOP R.R.SPIKE
 10/1/85
 SET P.K./WASHER
 10/12/1993 RCC
 FD P.K./WASHER
 SV127
 9/15/09
 SET P.K./WASHER
 FIN127
 10/21/10, KPM
 FD P.K./WASHER
 REFA13
 4/18/19, JFO
 8/19/19, JFO



O.D.O.T. DISTRICT 2 SURVEY OFFICE (USE ONLY)

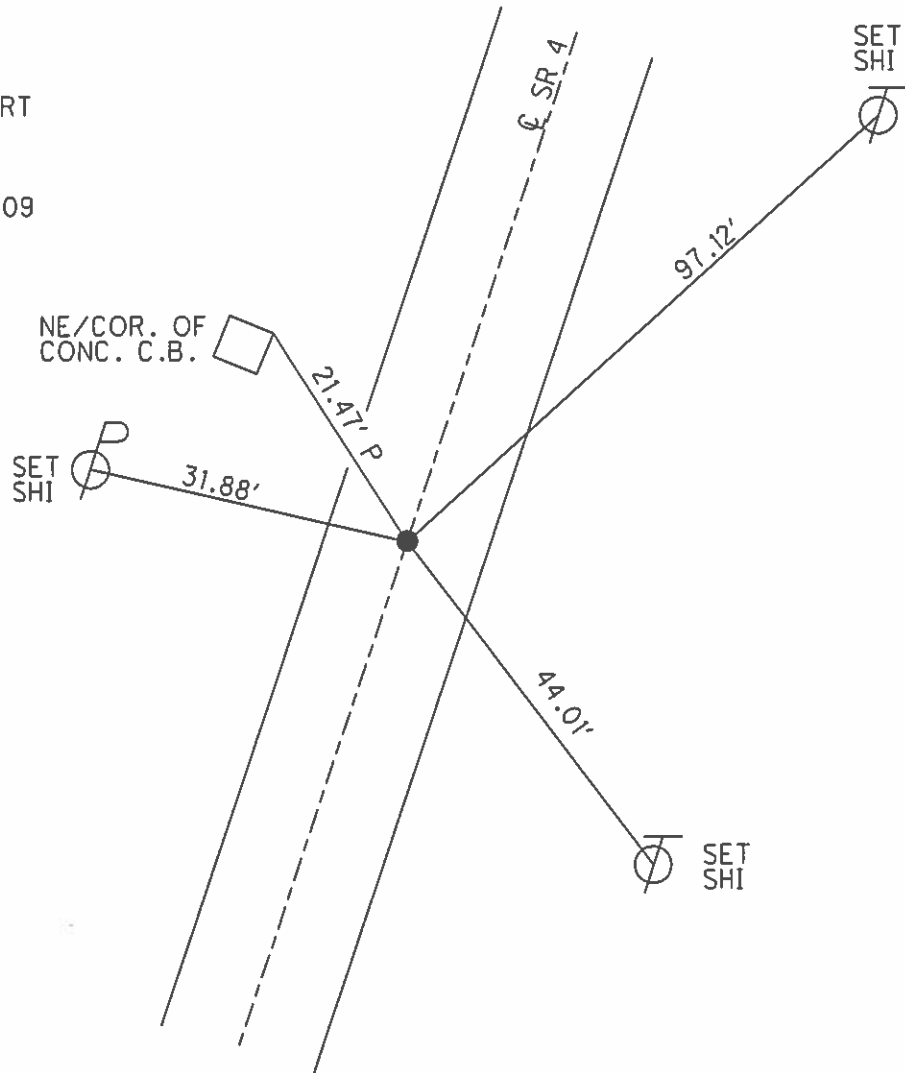
PERSONNEL _____ REFERENCE NO. 13 A SHEET 30 OF 41
 NOTES FINTEL DATE 8/12/10 ROUTE SR 4
 H.C. GOLDBERG WEATHER SUNNY COUNTY SENECA
 R.C. HARBAUGH TEMP. 87° TOWNSHIP VENICE
 _____ SECTION 3
 _____ T 1 N R 17 E

TYPE MONUMENT P.K./WASHER
 ON SURFACE - ~~BELOW~~ ON
 LEFT - ☉ PAV'T - RIGHT ON
10.8' TO RT EDGE PAVEMENT
 S.L.M. 311+32.69



GRID: NORTHING: 512837.154 EASTING: 1862818.197

RECORD: 10/1/1985
 STA. 301+38.40
 P.K. ATOP P.K. ATOP
 R.R.SPIKE
 P.I. Δ = 00° 04' 30" RT
 1/16/64 DATUM
 SET P.K./WASHER
 10/12/1993 RCC
 FD P.K./WASHER 9/3/09
 SV127 9/15/09
 SET P.K./WASHER
 GPS FIN 127
 10/21/10 KPM



O.D.O.T. DISTRICT 2 SURVEY OFFICE

PERSONNEL

REFERENCE NO. 13-A

SHEET 27 OF 50

NOTES CHENEY

H.C. RIPPLE

R.C. BARBOUR

GEYMAN

DATE 10-21-1992

WEATHER CLOUDY

TEMP. 40°

ROUTE #4

COUNTY SENECA

TOWNSHIP VENICE

SECTION 3

T / N R I T E

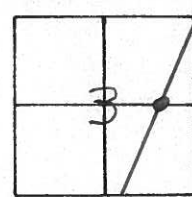
TYPE MONUMENT P.K. GONE - RAISED PAV'T. MARKER

ON SURFACE - BELOW _____

~~LEFT~~ - & PAV'T. - ~~RIGHT~~ ON _____

11' TO RT. EDGE PAVEMENT

S.L.M. 312+17



RECORD: 10-1-1985

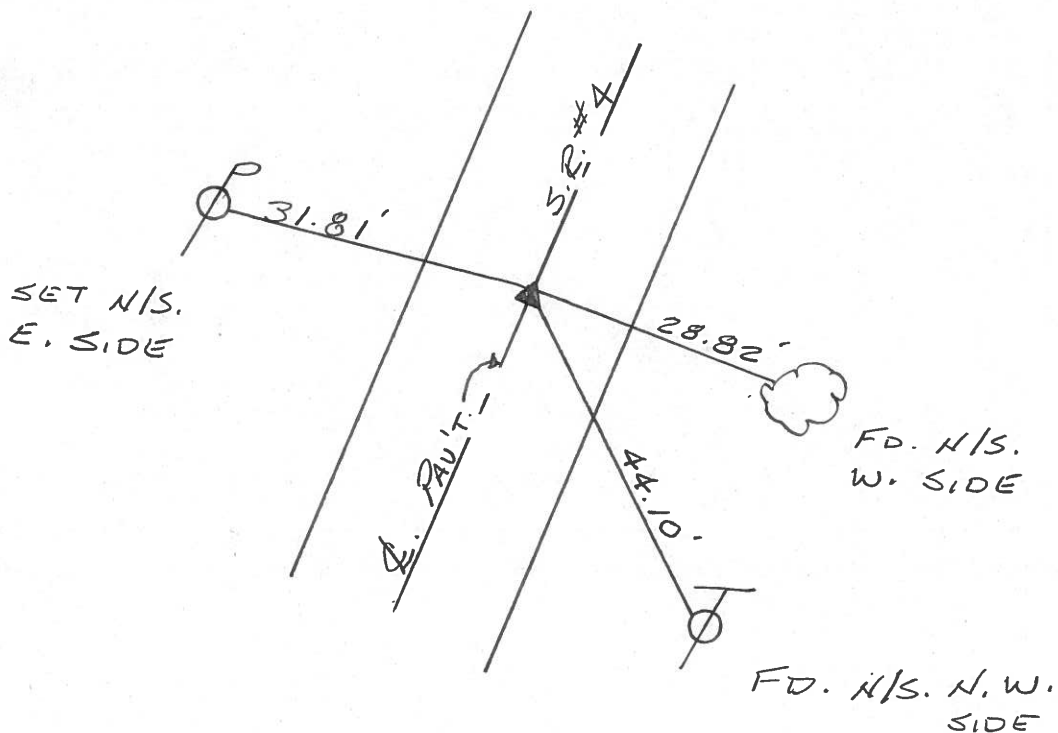
STA. 310+38.40

P.K. ATOP P.K. ATOP P.R. SPK.

P.I. $\Delta = 00^{\circ}04'30''$ (LT. OR RT.?)

*NOTE: OLD TIES CROSS
ON R.P.M.
10-21-1992

SET PK/WASHER
10-12-1993
RCC



O.D.O.T. DISTRICT 2 SURVEY OFFICE

PERSONNEL _____

REFERENCE NO. _____

SHEET 2 OF _____

NOTES CRONIN

H.C. RIPPLE

R.C. BARBOUR

GEYMAN

DATE 10/1/85

WEATHER OVERCAST

TEMP. 40

ROUTE # 4

COUNTY SENECA

TOWNSHIP VENICE

SECTION 3

T 1 N R 17 E

TYPE MONUMENT P.K. ATOP P.K. ATOP RR. SPIKE

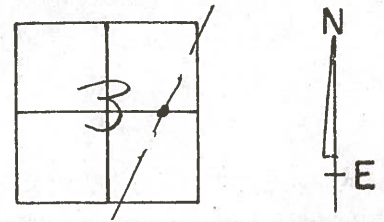
ON SURFACE - BELOW ON SURFACE

LEFT - ☉ PAV'T. - RIGHT ☉ PAV'T.

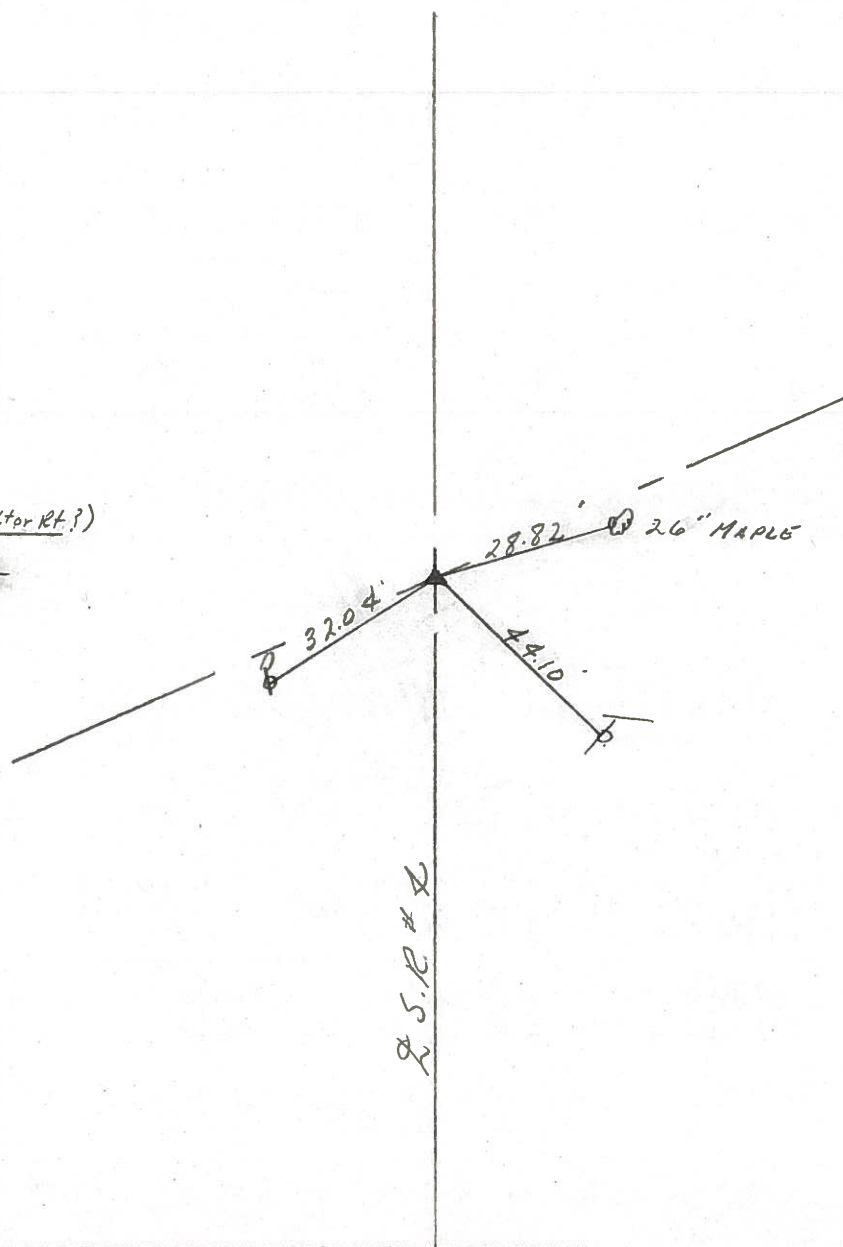
TO _____ EDGE PAVEMENT

S.L.M. _____

13A

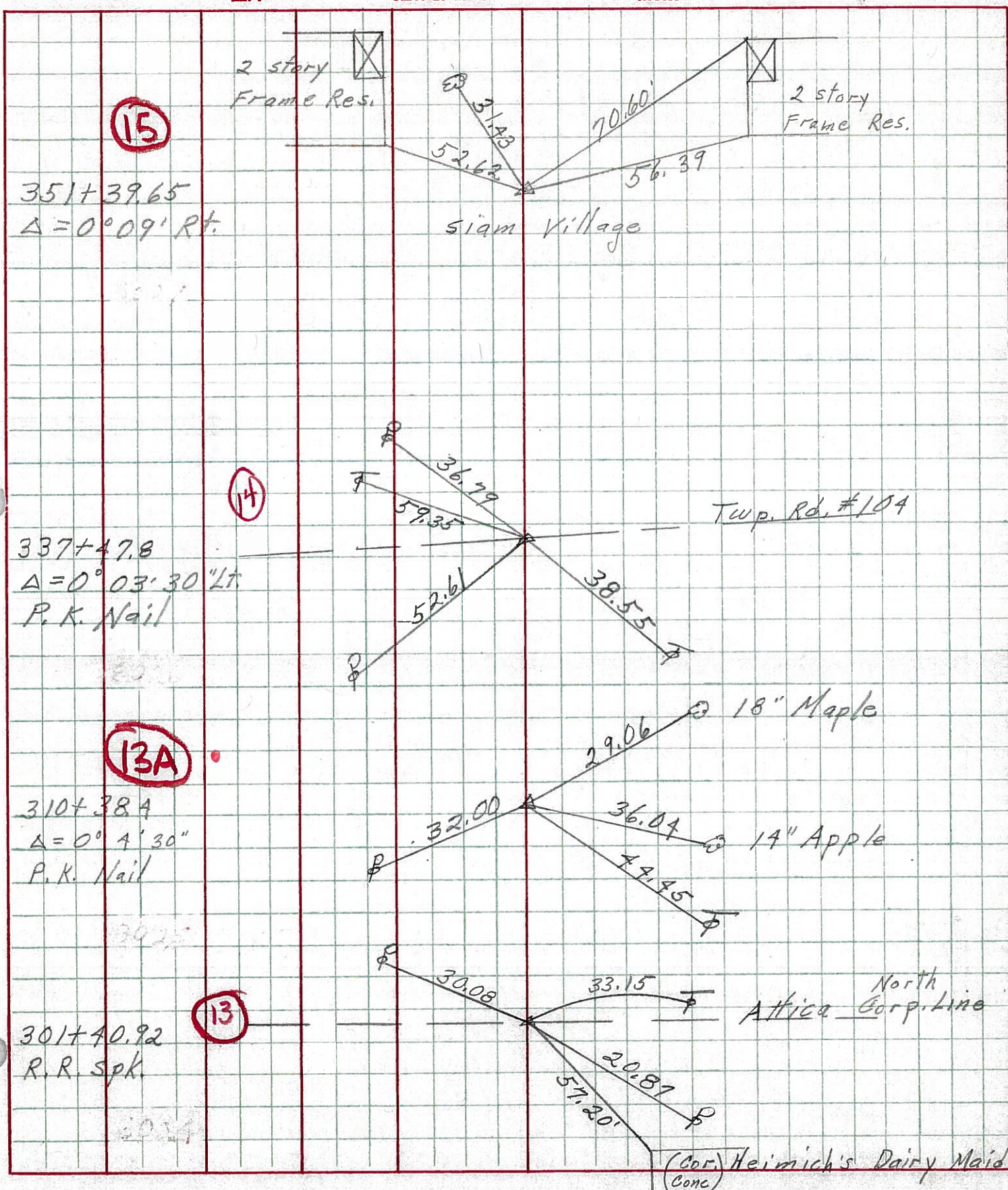


P.I. $\delta = 00^{\circ} 04' 30''$ (L or R?)
310 + 38.40



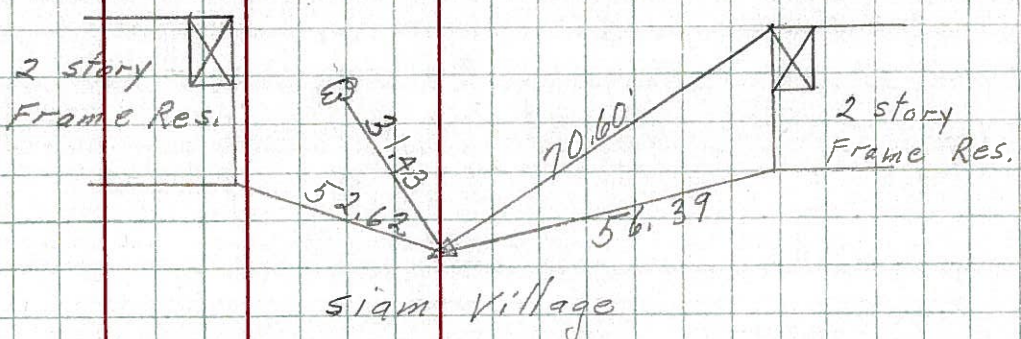
PERSONNEL	TITLE	PERSONNEL	TITLE	COUNTY	DATE
Schneider		Potts		Seneca	10-1-68
Mosser				S. R. 4	WEATHER Fair
Barbour				SEC. Attica	TEMP. 70°
Redding					

DESCRIPTION Ties for Control Points JOB NO. _____



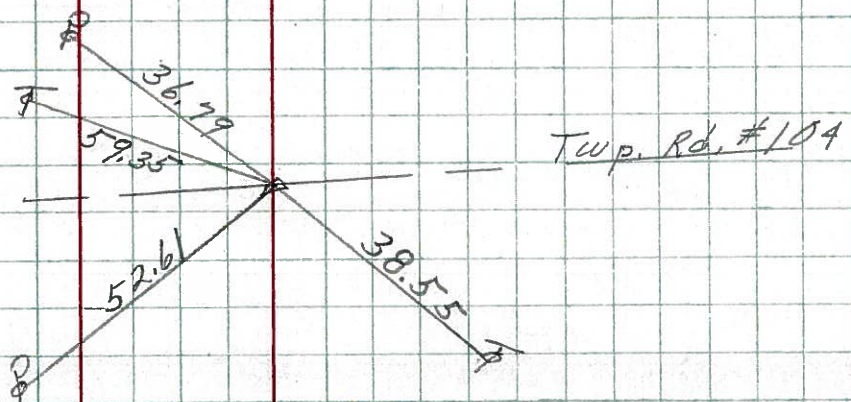
15

351+39.65
Δ = 0° 09' Rt.



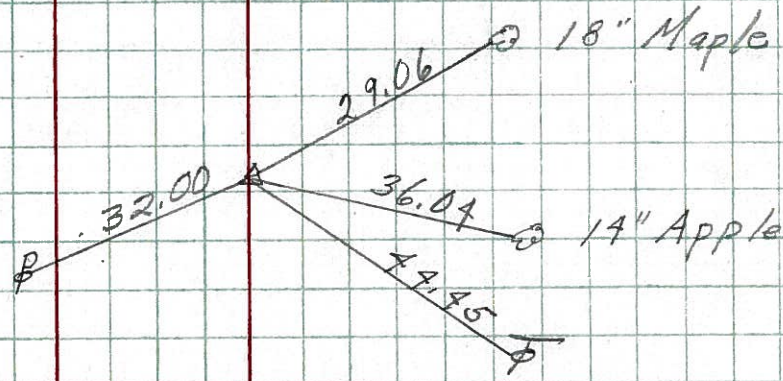
14

337+47.8
Δ = 0° 03' 30" Lt
P. K. Nail



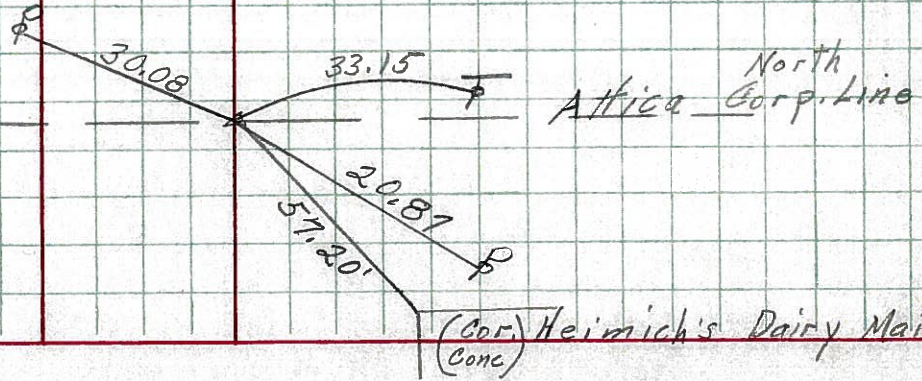
13A

310+38.4
Δ = 0° 4' 30"
P. K. Nail

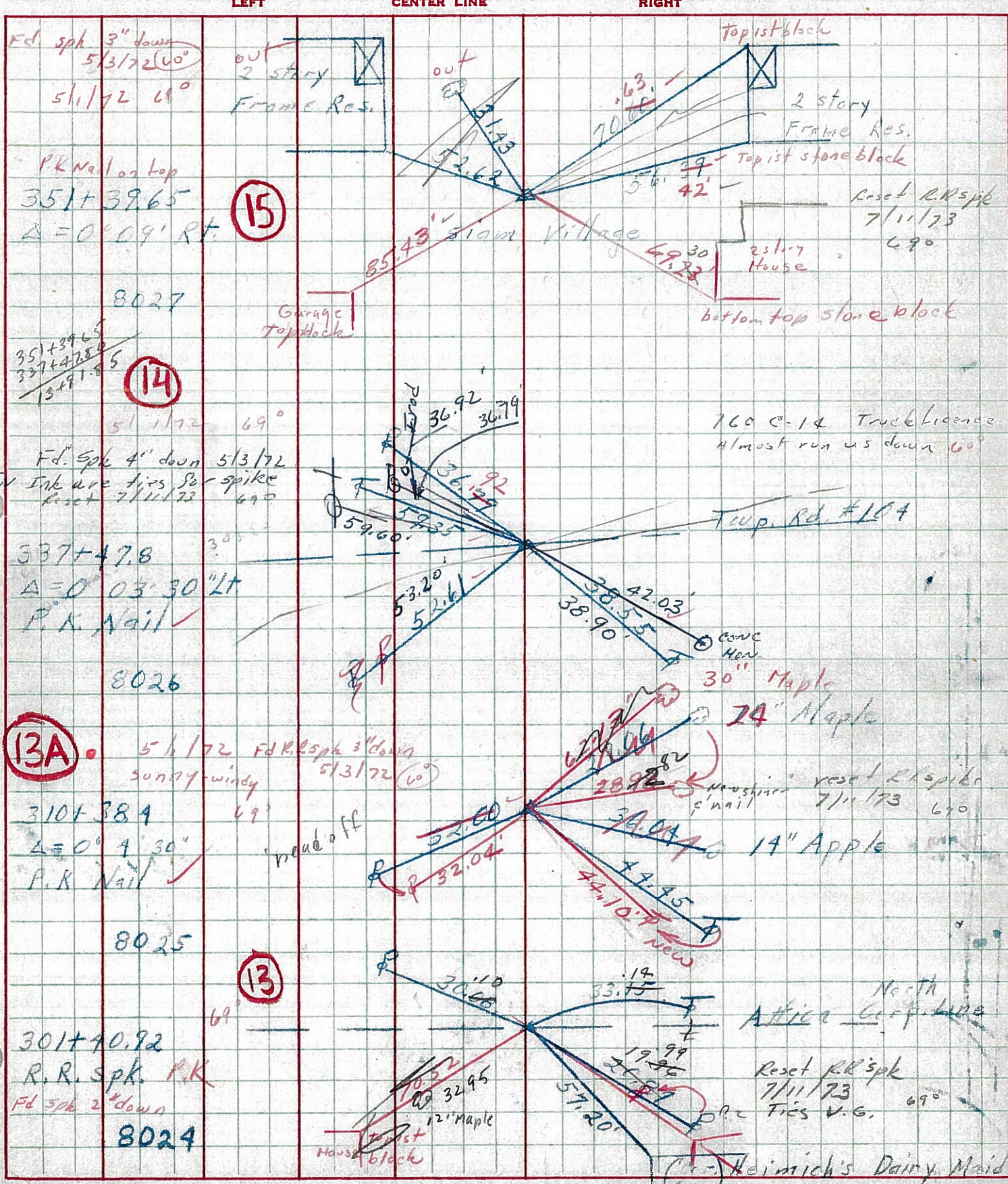


13

301+40.92
R. R. Spk.



PERSONNEL TITLE PERSONNEL TITLE COUNTY Seneca DATE 10-1-68
Schneider _____ Potts _____ S. R. 4 WEATHER Fair
Musser _____ _____ SEC. Attica TEMP. 70°
Barbour _____ _____
Redding _____ _____
 DESCRIPTION Ties for Control Points JOB NO. _____



F.d. spk 3" down
 5/3/72 (60°)
 5/1/72 69°
 P.K. Nail on top
 351+39.65
 Δ = 0° 09' Rt.
 8027

15

351+39.65
 337+47.8
 13+91.95
 5/1/72 69°
 F.d. Spk 4' down 5/3/72
 Inv Ink are ties for spike
 Reset 7/11/73
 30°
 537+47.8
 Δ = 0° 03' 30" Lt.
 P.K. Nail ✓
 8026

14

13A
 5/1/72 F.d. R.R. spk 3" down
 sunny windy 5/3/72 (60°)
 310+38.9
 Δ = 0° 4' 30"
 P.K. Nail ✓
 8025

13

301+40.92
 R.R. spk P.K.
 F.d. Spk 2" down
 8024

160 C-14 Truck License
 Almost run us down 60°

Reset R.R. spike
 7/11/73 69°

Reset P.K. spike
 7/11/73
 P.K. Ties V.G. 69°

Heimich's Dairy Maid
 (Cone)

PERSONNEL	TITLE	PERSONNEL	TITLE	COUNTY	DATE
KrabiLL				Seneca	
Kowaleski				S. R. 4	WEATHER
Brooks				SEC	TEMP

DESCRIPTION	LEFT	CENTER LINE	RIGHT	JOB NO.
-------------	------	-------------	-------	---------

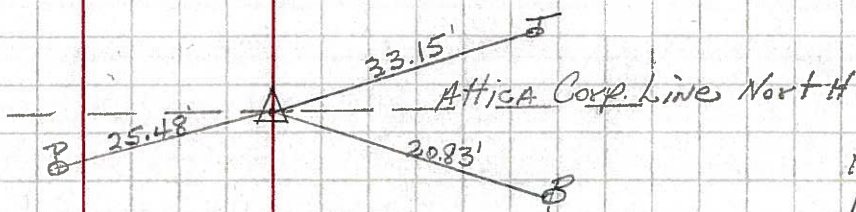
301+40.92 #250

R.I.

R.R. Spike

1-21-64

13

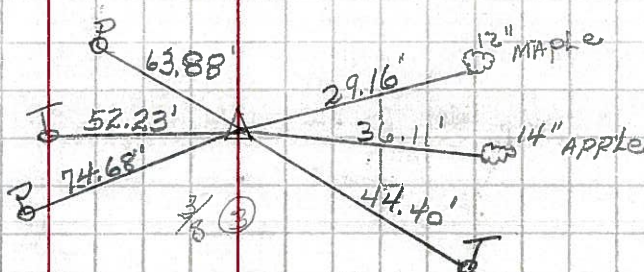


310+38.4 #251

R.I. Δ = 0°-4'-30" Rt.

P.K. NAIL 1-21-64

13A

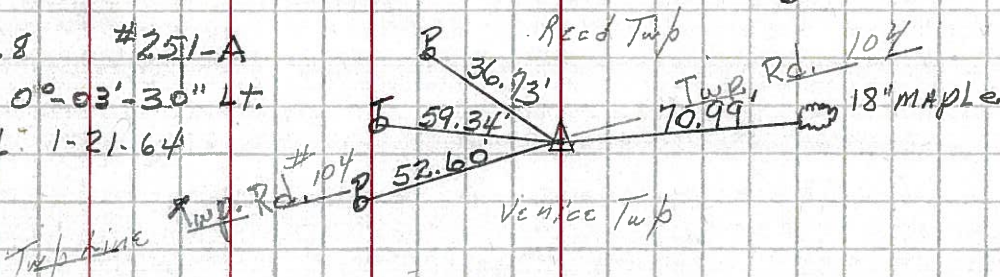


337+47.8 #251-A

R.I. Δ = 0°-03'-30" Lt.

P.K. NAIL 1-21-64

14

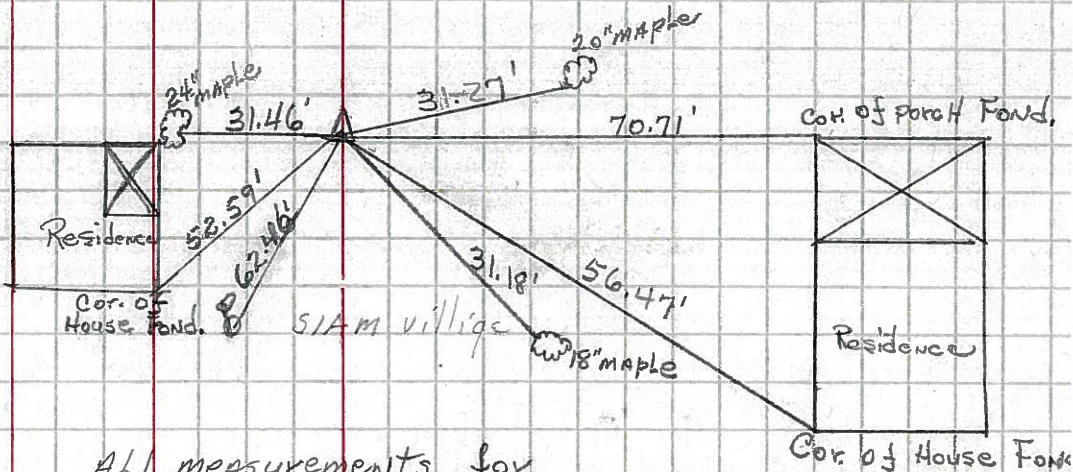


351+39.65 #252

R.I. Δ = 0°-09' Rt.

P.K. NAIL 1-21-64

15



ALL measurements for this point only are Plumbbed.