

O.D.O.T. DISTRICT 2 SURVEY OFFICE (USE ONLY)

PERSONNEL

REFERENCE NO. 14

SHEET 31 OF 56

NOTES RHOADES
 H.C. AUBLE
 R.C. MILLER

DATE 11/1/23
 WEATHER SUNNY
 TEMP. 37°

ROUTE SR 4
 COUNTY SENECA
 TOWNSHIP VENICE
 SECTION 2
 T 1 N R 17 E

DWG BY RHOADES PID 101241

TYPE MONUMENT MAG/WASHER

ON SURFACE - ~~BELOW~~ ON

OFFSET \varnothing PAVEMENT 1.1' ~~LT~~ : RT
9.3' TO RT EDGE PAVEMENT

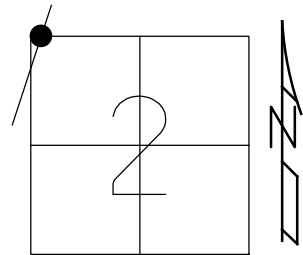
STATION: 338+42.35

HORZ.DATUM: NAD83(2011)

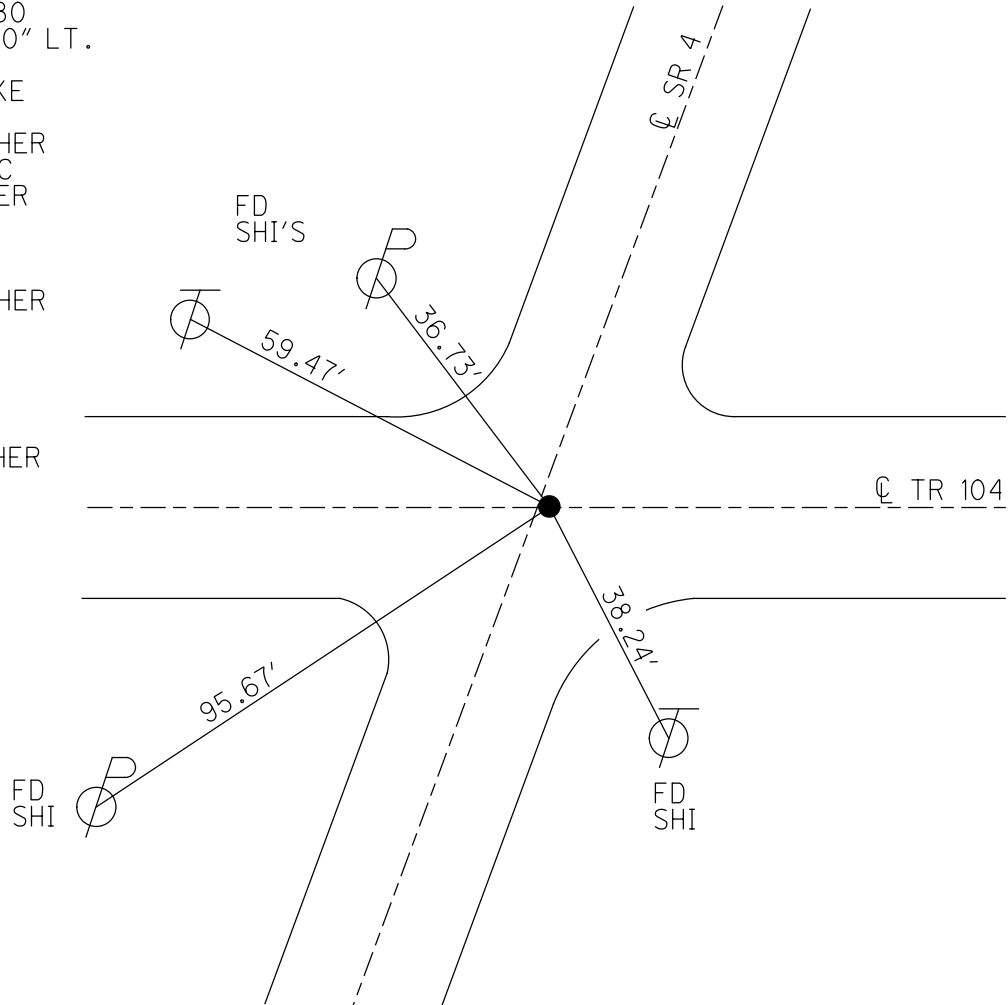
GEOID: NAVD88 2018

GRID: NORTHING: 515387.365

EASTING: 1863734.005



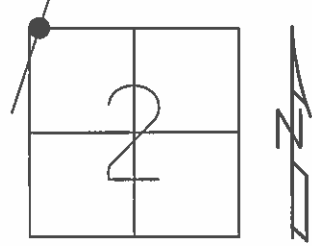
RECORD: P.I.
 STA. 337+47.80
 $\Delta = 00^\circ 03' 30''$ LT.
 P.K./WASHER
 ATOP R.R.SPIKE
 10/1/85
 SET P.K./WASHER
 10/12/1993 RCC
 FD P.K./WASHER
 SV128
 9/15/09
 8/12/10, JMH
 SET P.K./WASHER
 FIN 128
 10/21/10 KPM
 FD P.K.NAIL
 REF14
 7/13/23, TDN
 SET MAG/WASHER
 11/1/23, DSA



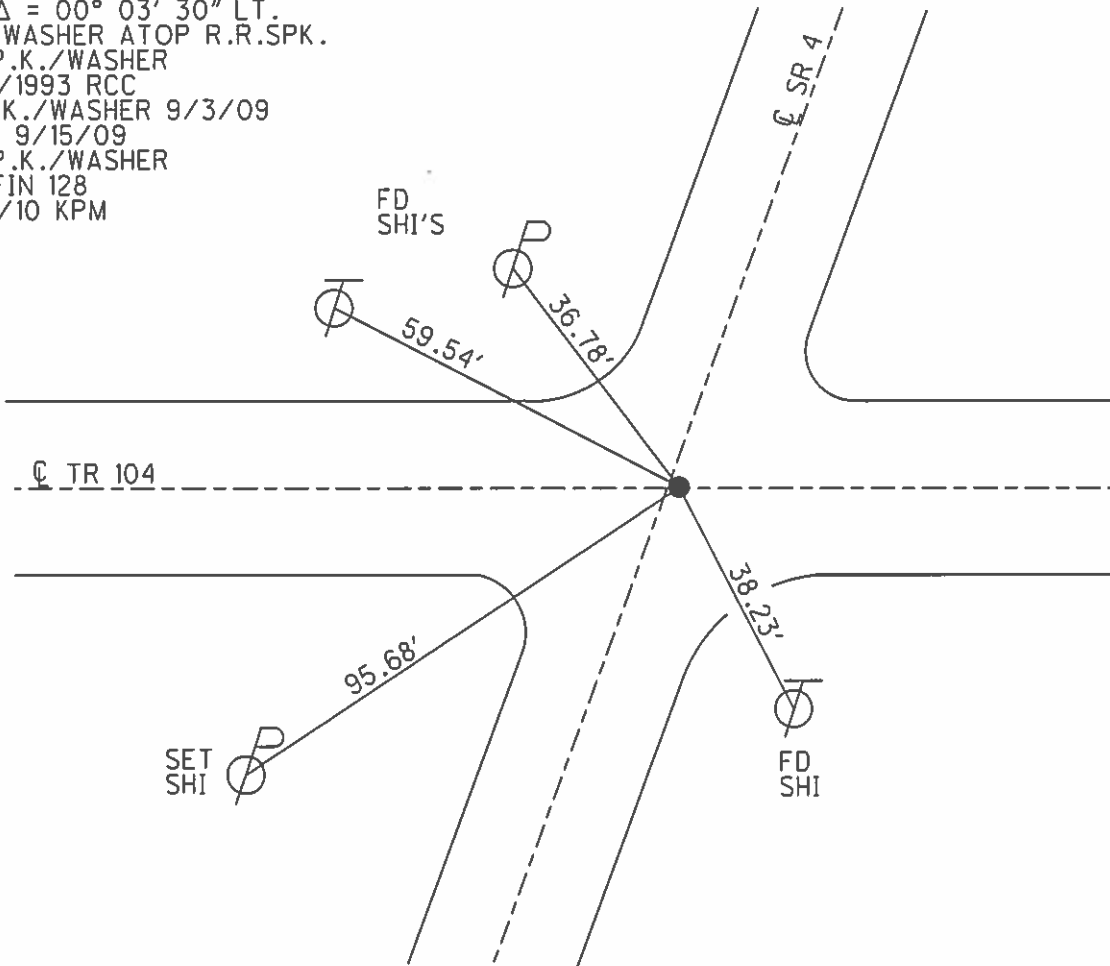
O.D.O.T. DISTRICT 2 SURVEY OFFICE (USE ONLY)

PERSONNEL _____ REFERENCE NO. 14 SHEET 31 OF 41
 NOTES FINTEL DATE 8/12/10 ROUTE SR 4
 H.C. GOLDBERG WEATHER SUNNY COUNTY SENECA
 R.C. HARBAUGH TEMP. 87° TOWNSHIP VENICE
 _____ SECTION 2
 T 1 N R 17 E

TYPE MONUMENT P.K./WASHER
 ON SURFACE - ~~BELOW~~ ON
~~LEFT~~ - CL PAV'T - RIGHT 0.5'
9.3' TO RT. EDGE PAVEMENT
 S.L.M. 338+42.35
 GRID: NORTHING: 515387.348 EASTING: 1863733.954



RECORD: 10/1/1985
 STA. 337+47.80
 P.I. Δ = 00° 03' 30" LT.
 P.K./WASHER ATOP R.R.SPK.
 SET P.K./WASHER
 10/12/1993 RCC
 FD P.K./WASHER 9/3/09
 SV128 9/15/09
 SET P.K./WASHER
 GPS FIN 128
 10/21/10 KPM



O.D.O.T. DISTRICT 2 SURVEY OFFICE

PERSONNEL

REFERENCE NO. 14

SHEET 28 OF 50

NOTES CHENEY

H.C. RIPPLE

DATE 10-21-1992

ROUTE #4

R.C. BARBOUR

WEATHER CLOUDY

COUNTY SENECA

GEYMAN

TEMP. 40°

TOWNSHIP VENICE

SECTION 2

T/L N R 17 E

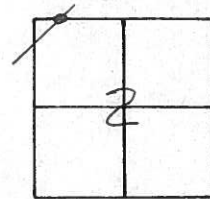
TYPE MONUMENT PK/WASHER

ON SURFACE - ~~BELOW~~ ON

~~LEFT~~ - Q PAV'T. - RIGHT 1'

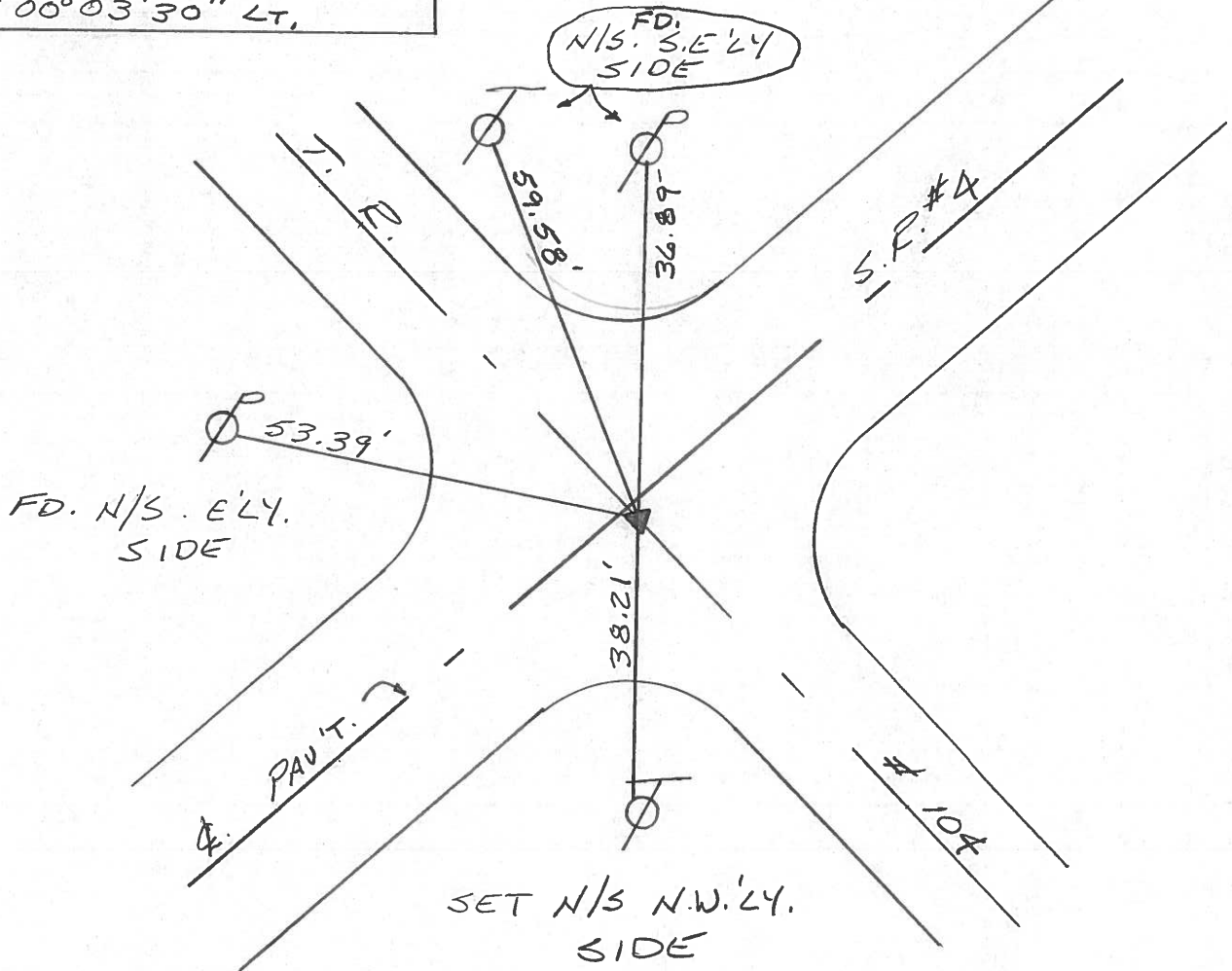
10' TO R.T. EDGE PAVEMENT

S.L.M. 339426



RECORD: 10-1-1985
 STA. 337+47.80
 PK/WASHER ATOP R.P. SPK.
 P.I. Δ = 00°03'30" LT.

SET PK/WASHER
 10-12-1993
 RCC



O.D.O.T. DISTRICT 2 SURVEY OFFICE

PERSONNEL

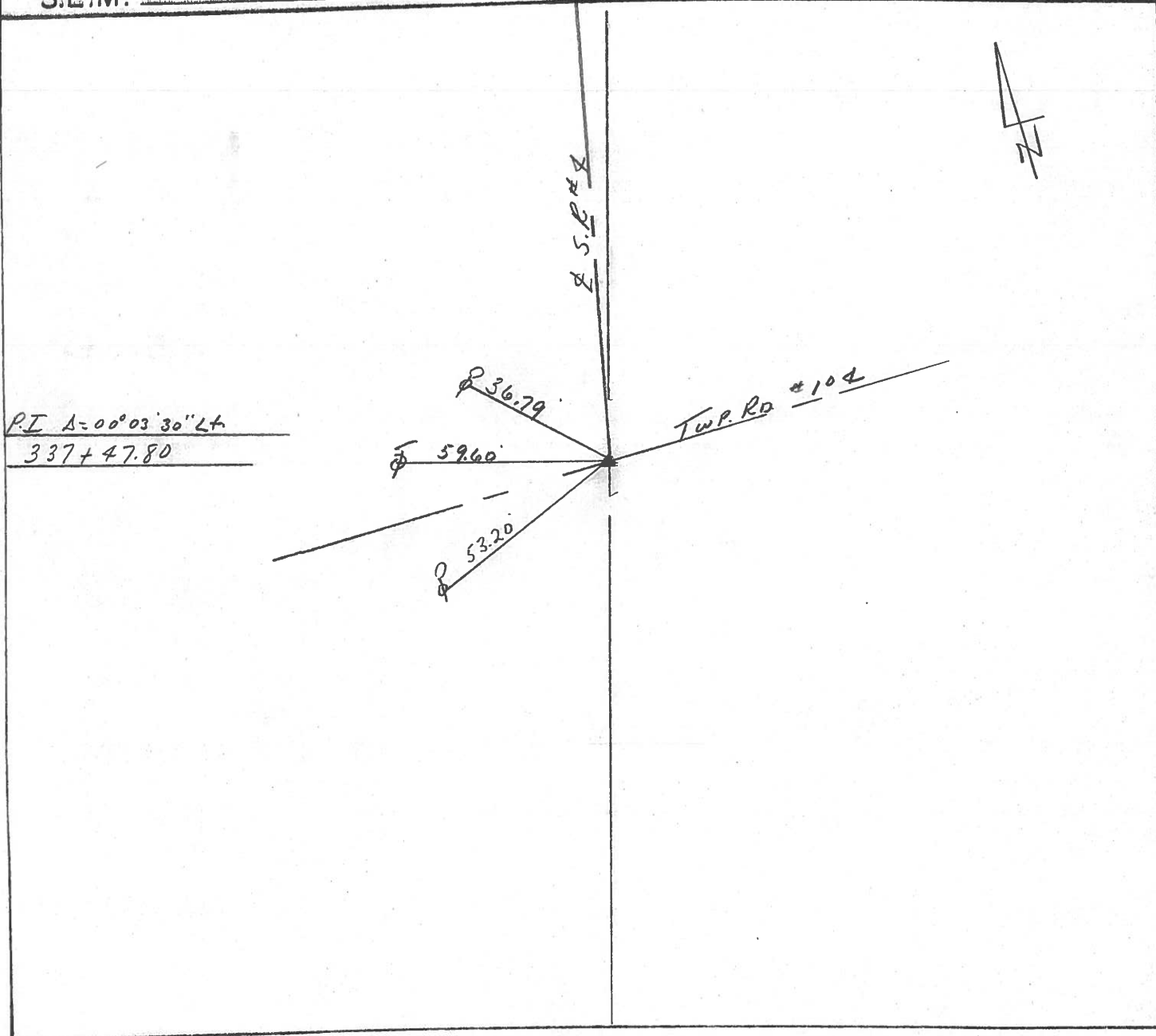
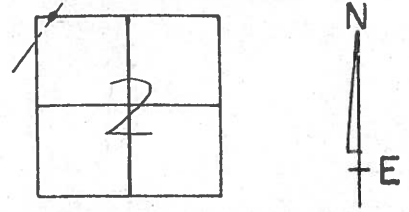
REFERENCE NO. 14 SHEET 3 OF

NOTES CRONIN
H.C. RIPPLE
R.C. BARBOUR
GEYMAN

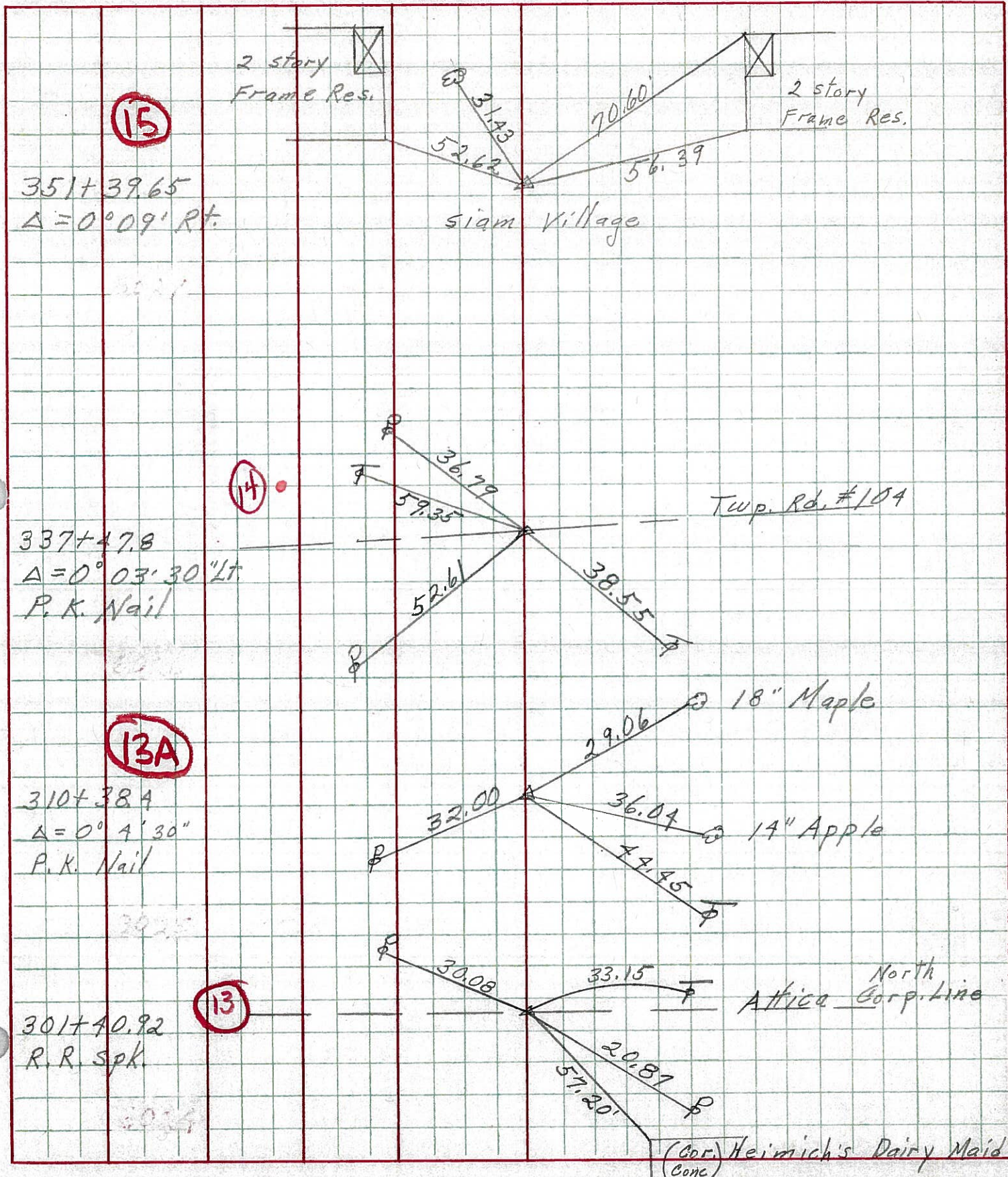
DATE 10/1/85
WEATHER CLOUDY-WINDY
TEMP. 44°

ROUTE # 4
COUNTY SENECA
TOWNSHIP VENICE
SECTION 2
T 1 N R 17 E

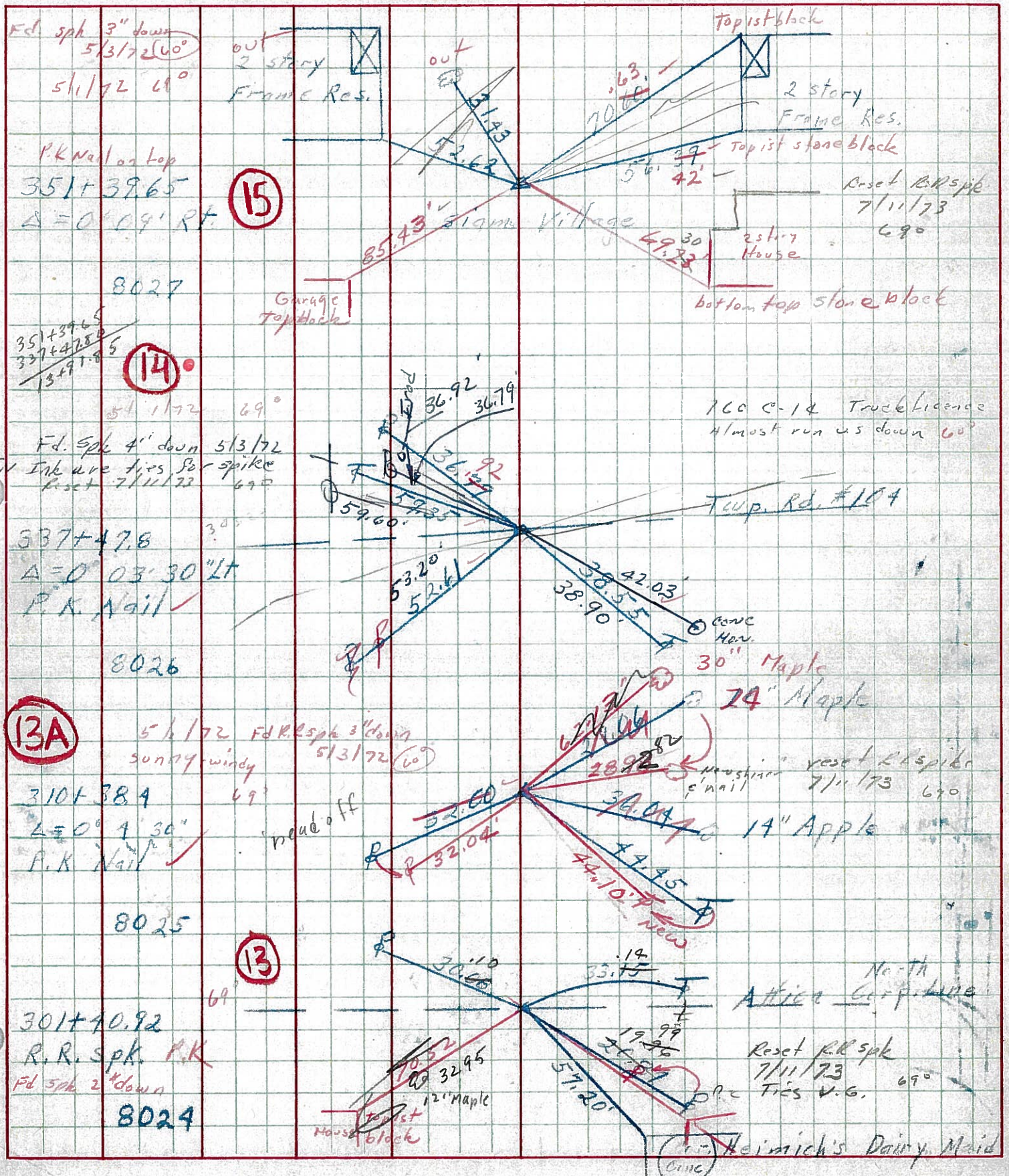
TYPE MONUMENT P.K. & WASHER ATOP R.R. SPK
ON SURFACE - BELOW O.N. SURFACE
LEFT - & PAVT. - RIGHT & PAVT.
TO EDGE PAVEMENT
S.L.M.



PERSONNEL	TITLE	PERSONNEL	TITLE	COUNTY	Seneca	DATE	10-1-68
Schneider		Potts		S. R.	4	WEATHER	Fair
Mosser				SEC.	Attica	TEMP.	70°
Barbour							
Redding							
DESCRIPTION	Ties for Control Points			JOB NO.			



PERSONNEL	TITLE	PERSONNEL	TITLE	COUNTY	DATE
Schneider		Potts		Scheneca	10-1-68
Musser				S. R.	4
Barbour				WEATHER	Fair
Redding				SEC.	Attica
DESCRIPTION	Ties for Control Points			TEMP.	76°
	LEFT	CENTER LINE	RIGHT	JOB NO.	



Fd. spk 3" down
 5/3/72 (40°)
 5/1/72 69°
 P.K. Nail on top
 351 + 39.65
 Δ = 0° 09' RT

15

8027
 351 + 39.65
 337 + 47.85
 13 + 91.85
 5/1/72 69°

14

Fd. spk 4" down 5/3/72
 In Ink are ties for spike
 Reset 7/11/73
 537 + 47.8
 Δ = 0° 03' 30" LT
 P.K. Nail
 8026

13A
 5/1/72 sunny windy
 Fd. R. spk 3" down
 5/3/72 (60°)
 310 + 38.4
 Δ = 0° 4' 30"
 P.K. Nail
 8025

13

301 + 40.92
 R. R. spk P.K.
 Fd. spk 2" down
 8024

Heinrich's Dairy Maid (one)

PERSONNEL	TITLE	PERSONNEL	TITLE	COUNTY	DATE
KrabiLL				Seneca	
Kowaleski				S. R. 4	WEATHER
Brooks				SEC.	TEMP.

DESCRIPTION	LEFT	CENTER LINE	RIGHT	JOB NO.
-------------	------	-------------	-------	---------

301+40.92 #250

P.I.

R.R. Spike

1-21-64

13

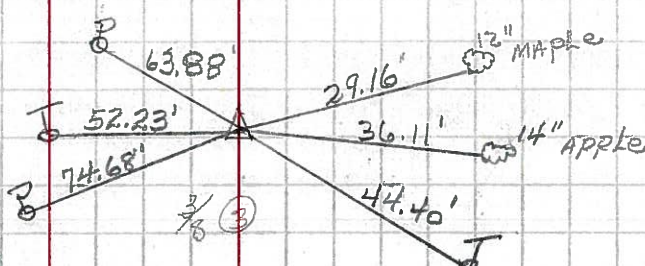


310+38.4 #251

P.I. Δ = 0°-4'-30" Rt.

P.K. NAIL 1-21-64

13A

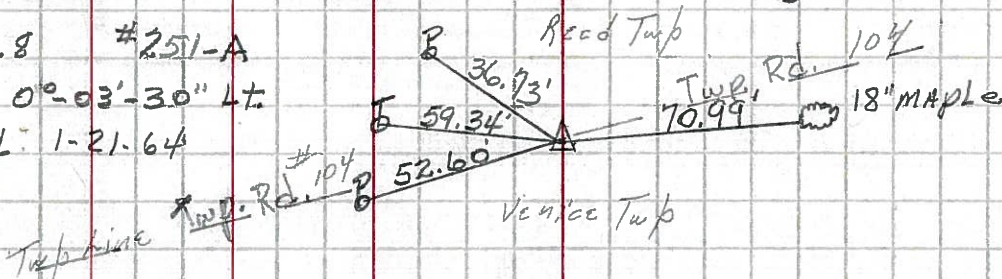


337+47.8 #251-A

P.I. Δ = 0°-03'-30" Lt.

P.K. NAIL 1-21-64

14

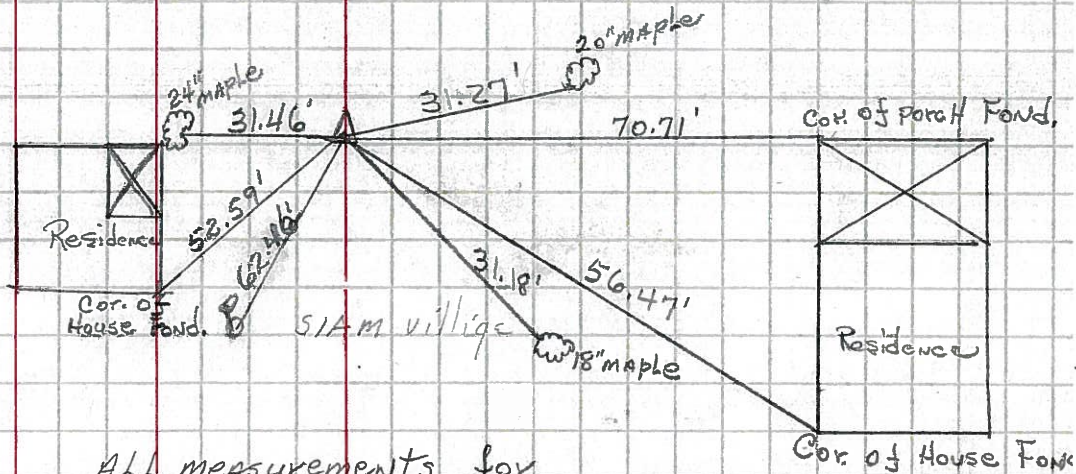


351+39.65 #252

P.I. Δ = 0°-09' Rt.

P.K. NAIL 1-21-64

15



ALL measurements for this point only are Plumbed.