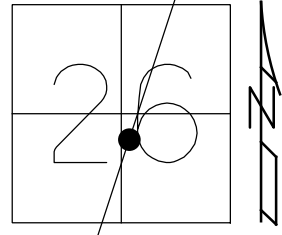


O.D.O.T. DISTRICT 2 SURVEY OFFICE (USE ONLY)

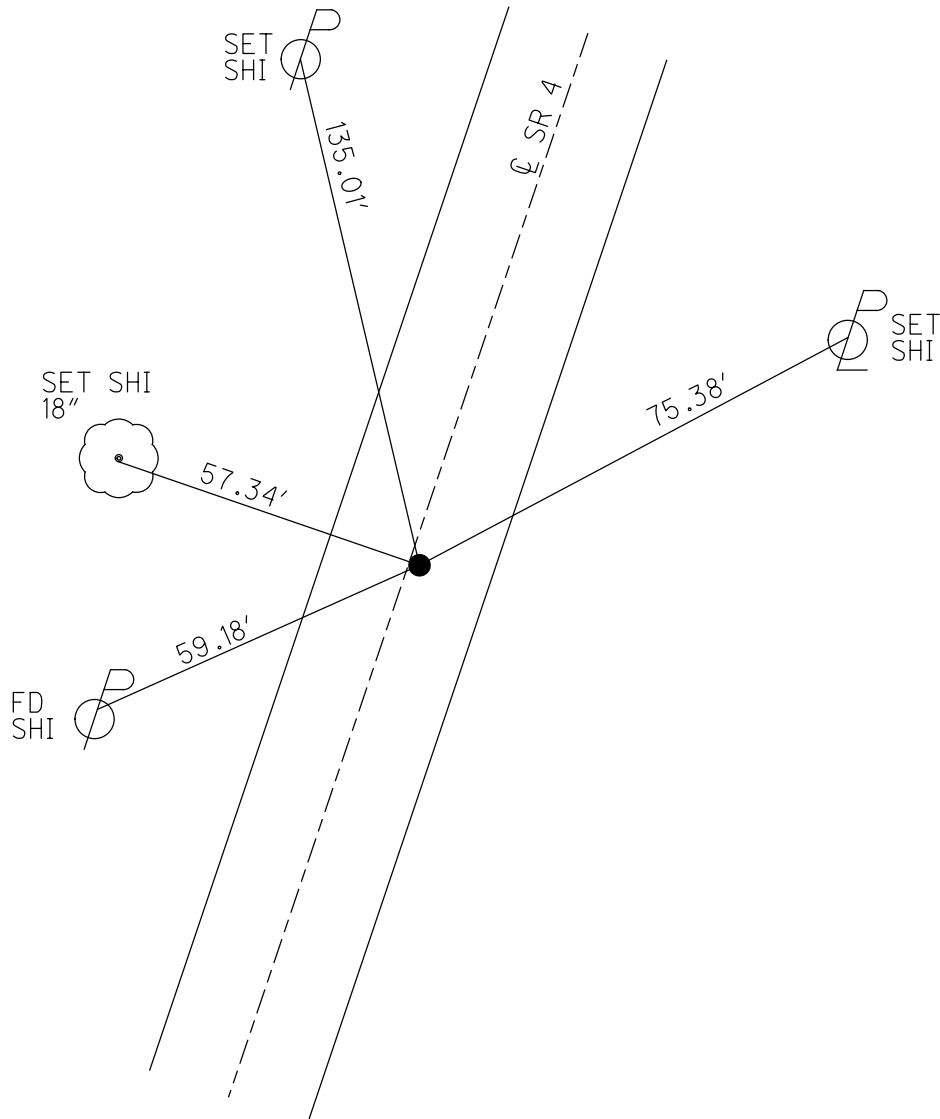
PERSONNEL \_\_\_\_\_ REFERENCE NO. 17 SHEET 36 OF 56  
 NOTES ASTON DATE 7/13/23 ROUTE SR 4  
 H.C. AUBLE WEATHER SUNNY COUNTY SENECA  
 R.C. NIESE TEMP. 85° TOWNSHIP REED  
           RHOADES SECTION 26  
 DWG BY RHOADES PID 101241 T 2 N R 17 E

TYPE MONUMENT LG.R.R.SPIKE  
~~ON SURFACE~~ - BELOW 6"  
 OFFSET CL PAVEMENT 0.6' ~~LT~~ : RT  
10' TO RT EDGE PAVEMENT  
 STATION: 411+82.43



HORZ.DATUM: NAD83 2011 GEOID: NAVD88 2018  
 GRID: NORTHING: 522294.302 EASTING: 1866218.755

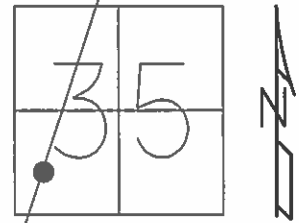
RECORD: P.I.  
 STA. 410+90.54  
 $\Delta = 0^\circ 03' 00''$  LT  
 P.K./WASHER  
 ATOP R.R.SPIKE  
 10/1/85  
 SET P.K./WASHER  
 7/2/01, BWC  
 FD P.K./WASHER  
 SV131  
 9/15/09  
 8/13/10, KPM  
 FD P.K.NAIL  
 REF17  
 4/18/19  
 8/19/19, JFO  
 FD LG.R.R.SPIKE  
 6" DOWN  
 REF17  
 7/17/23, TDN



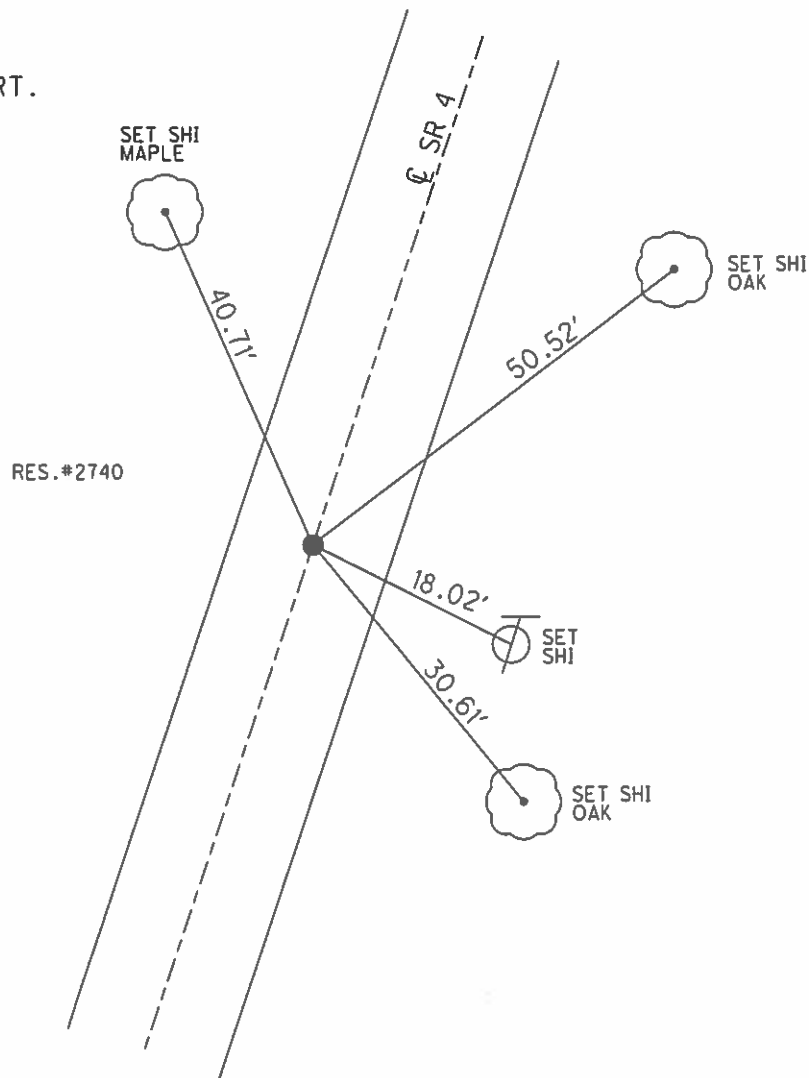
O.D.O.T. DISTRICT 2 SURVEY OFFICE (USE ONLY)

PERSONNEL \_\_\_\_\_ REFERENCE NO. 15 SHEET 32 OF 41  
 NOTES FINTEL DATE 8/12/10 ROUTE SR 4  
 H.C. GOLDBERG WEATHER SUNNY COUNTY SENECA  
 R.C. HARBAUGH TEMP. 87° TOWNSHIP REED  
 \_\_\_\_\_ SECTION 35  
 \_\_\_\_\_ T 2 N R 17 E

TYPE MONUMENT P.K./WASHER  
 ON SURFACE - ~~BELOW~~ ON  
 LEFT - ☉ PAV'T - RIGHT ON  
10' TO RT EDGE PAVEMENT  
 S.L.M. 352+33.45  
 GRID: NORTHING: 516697.374 EASTING: 1864202.051



RECORD: 10/1/1985  
 STA. 351+39.65  
 P.I. Δ = 00° 09' RT.  
 P.K./WASHER  
 ATOP R.R.SPK.  
 SET P.K./WASHER  
 10/12/1993 RCC  
 FD P.K./WASHER  
 SV129 9/15/09  
 SET P.K./WASHER  
 GPS FIN 129  
 10/21/10 KPM



O.D.O.T. DISTRICT 2 SURVEY OFFICE

PERSONNEL

REFERENCE NO. 15

SHEET 29 OF 50

NOTES CHENEY

H.C. RIPPLE

R.C. BARBOUR

GEYMAN

DATE 10-21-1992

WEATHER CLOUDY

TEMP. 40°

ROUTE #4

COUNTY SENECA

TOWNSHIP REED

SECTION 35

T2N R17E

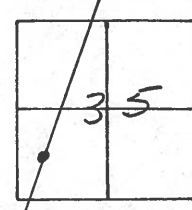
TYPE MONUMENT PK/WASHER

ON SURFACE - ~~BELOW~~ ON

~~LEFT - C. PAV'T.~~ - RIGHT ON

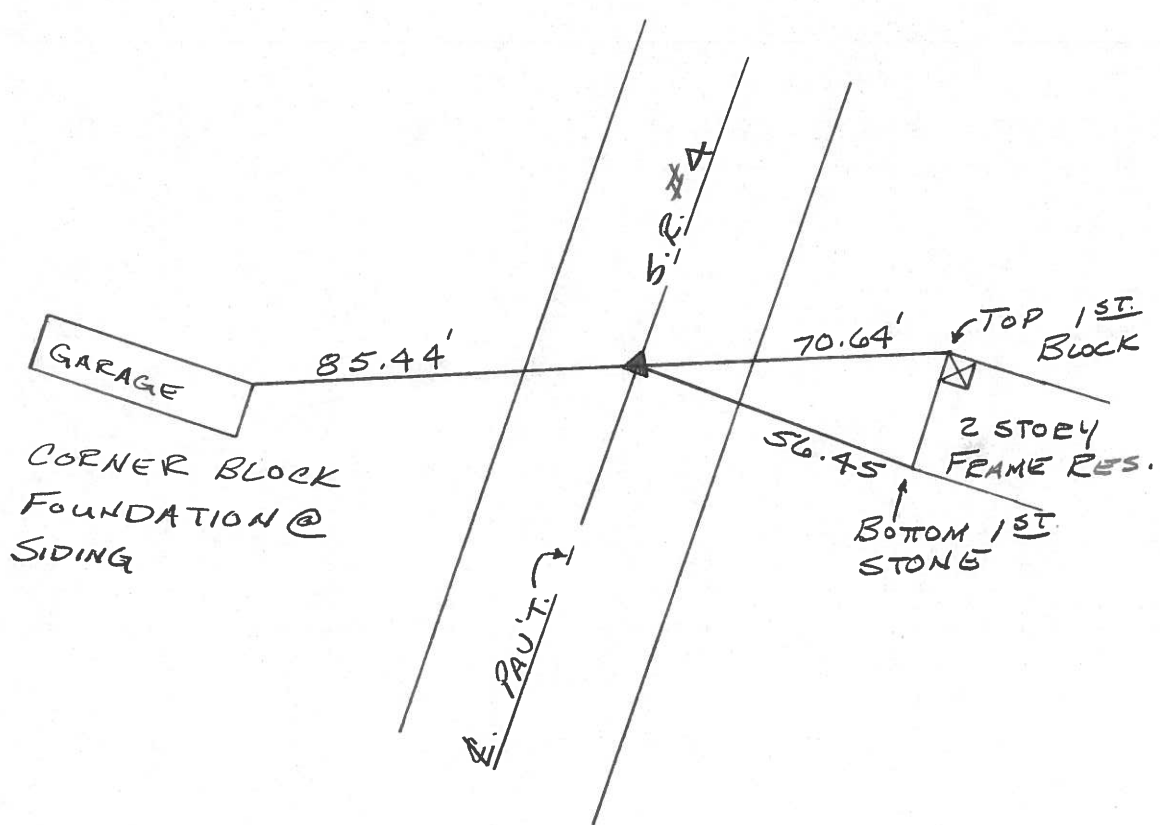
11' TO FT. EDGE PAVEMENT

S.L.M. 3534 34



RECORD: 10-1-1985  
 STA. 351+39.65  
 PK/WASHER ATOP R.R. SPK.  
 P.I. Δ = 00°09'00" RT.

SET PK/WASHER  
 10-12-1993  
 RCC



# O.D.O.T. DISTRICT 2 SURVEY OFFICE

PERSONNEL

REFERENCE NO. \_\_\_\_\_

SHEET 4 OF \_\_\_\_\_

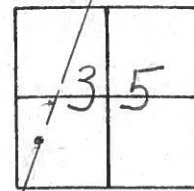
NOTES CRONIN  
H.C. RIPPLE  
R.C. BARBOUR  
GEYMAN

DATE 10/1/05  
WEATHER CLOUDY-WINDY  
TEMP. 47°

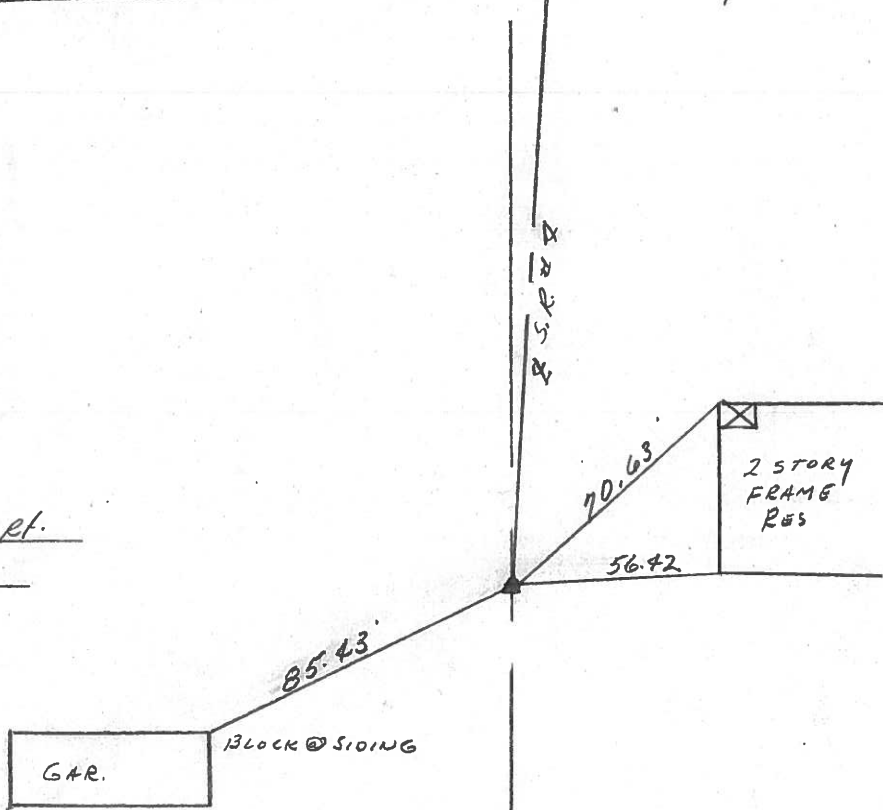
ROUTE #4  
COUNTY SENECA  
TOWNSHIP REED  
SECTION 35  
T 2 N R 17 E

TYPE MONUMENT PL WASHER ATOP RR SPIKE  
ON SURFACE - BELOW ON SURFACE  
LEFT - ℄ PAV'T. - RIGHT ℄ PAVT  
TO EDGE PAVEMENT  
S.L.M. \_\_\_\_\_

(15)



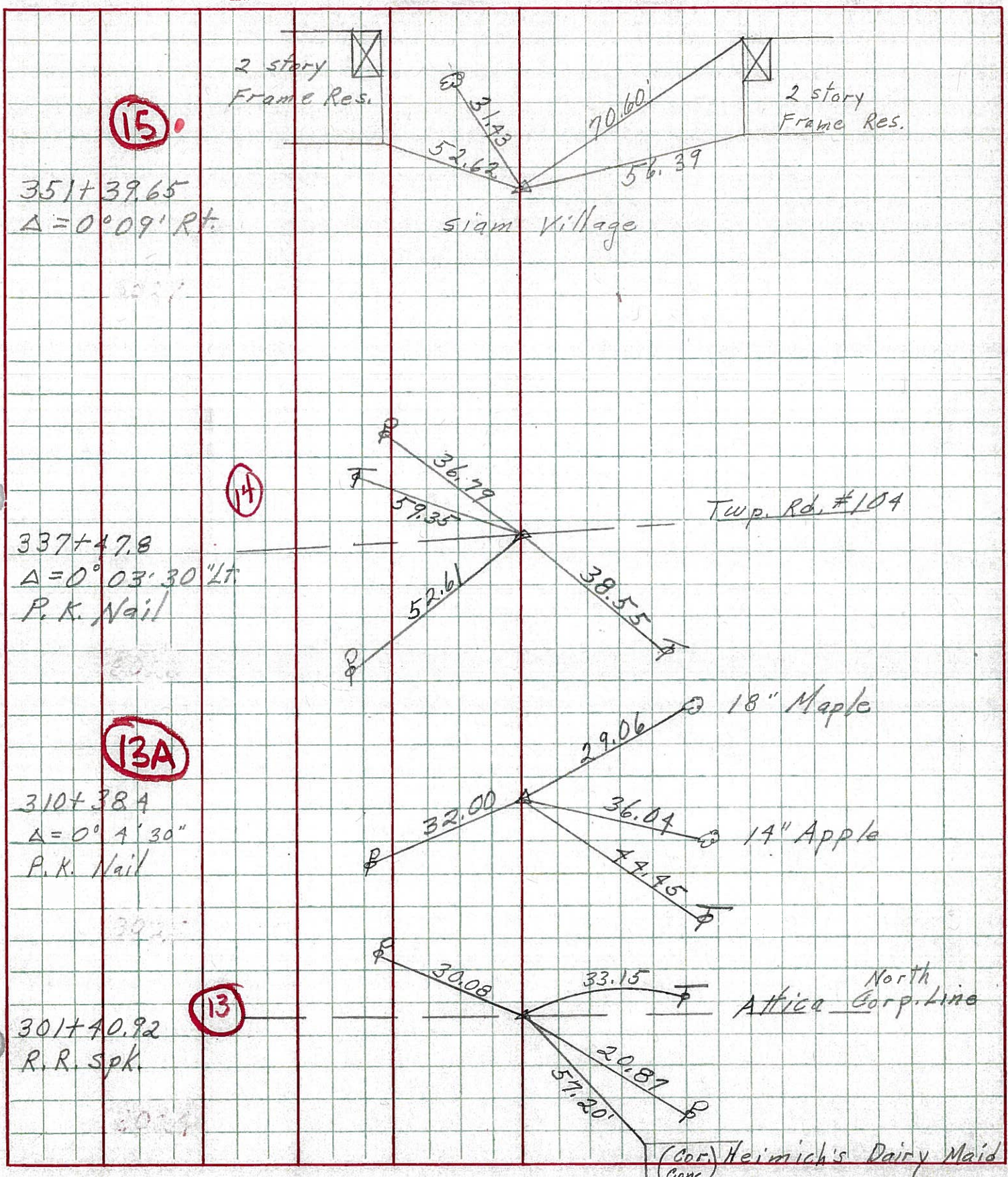
P.I.  $\Delta = 00^{\circ}09'00''$  Rt.  
351+39.65





PERSONNEL	TITLE	PERSONNEL	TITLE	COUNTY	DATE
Schneider		Potts		Seneca	10-1-68
Mosser				S. R. 4	WEATHER Fair
Barbour				SEC. Attica	TEMP. 70°
Redding					

DESCRIPTION Ties for Control Points JOB NO. \_\_\_\_\_





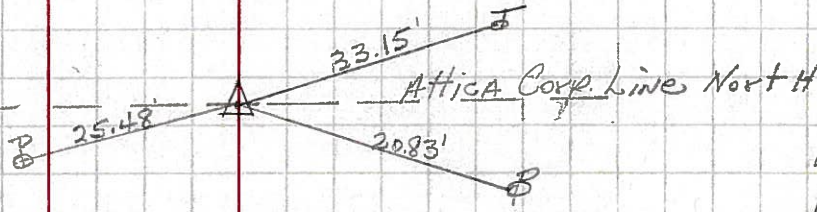




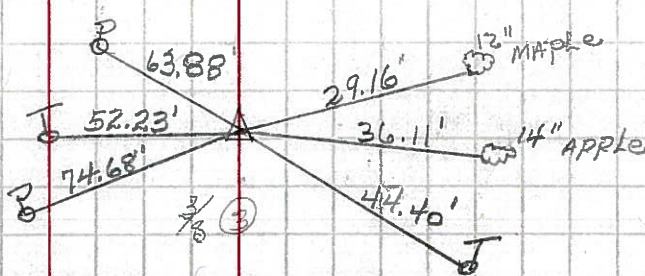
PERSONNEL	TITLE	PERSONNEL	TITLE	COUNTY	DATE
KrBILL				Seneca	
Kowaleski				S. R. 4	WEATHER
Brooks				SEC.	TEMP.

DESCRIPTION	LEFT	CENTER LINE	RIGHT	JOB NO.
-------------	------	-------------	-------	---------

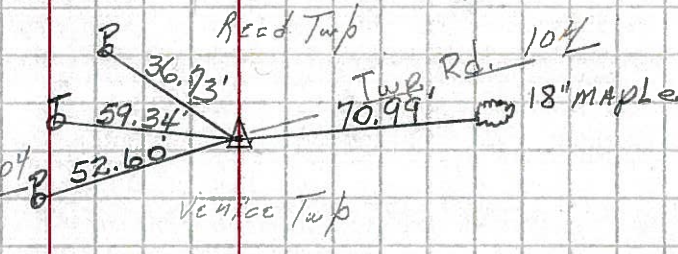
301+40.92 #250  
 R.I.  
 R.R. Spike  
 1-21-64  
 (13)



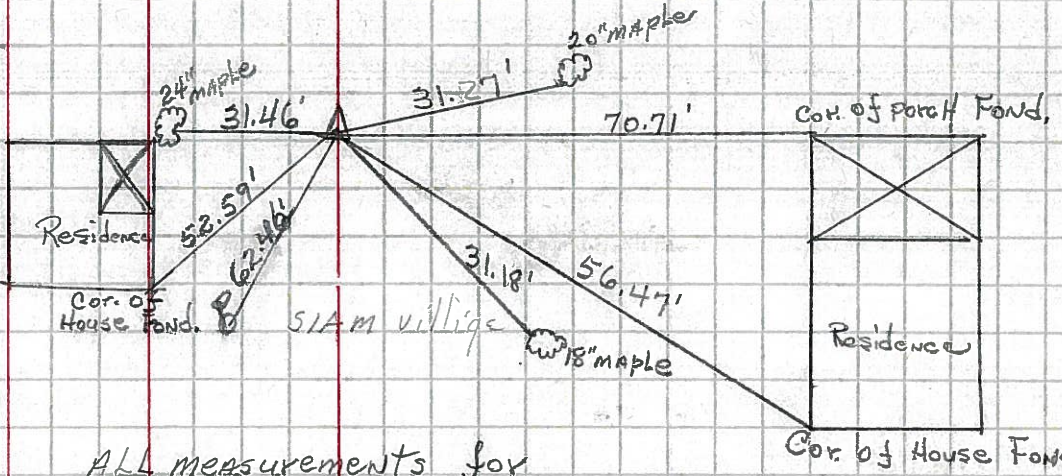
310+38.4 #251  
 R.I. Δ = 0°-4'-30" Rt.  
 P.K. NAIL 1-21-64  
 (13A)



337+47.8 #251-A  
 R.I. Δ = 0°-03'-30" Lt.  
 P.K. NAIL 1-21-64  
 (14)



351+39.65 #252  
 R.I. Δ = 0°-09' Rt.  
 P.K. NAIL 1-21-64  
 (15)



ALL measurements for  
 this point only are Plumbed.