

O.D.O.T. DISTRICT 2 SURVEY OFFICE (USE ONLY)

PERSONNEL

REFERENCE NO. 16

SHEET 33 OF 56

NOTES RHOADES

DATE 11/1/23

ROUTE SR 4

H.C. AUBLE

WEATHER SUNNY

COUNTY SENECA

R.C. MILLER

TEMP. 37°

TOWNSHIP VENICE

SECTION 35

DWG BY RHOADES

PID 101241

T 2 N R 17 E

TYPE MONUMENT MAG/WASHER

ON SURFACE - ~~BELOW~~ ON

OFFSET 0 PAVEMENT ON LT : RT

10.3' TO RT EDGE PAVEMENT

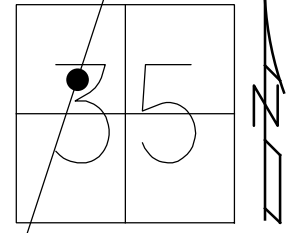
STATION: 352+33.45

HORZ.DATUM: NAD83(2011)

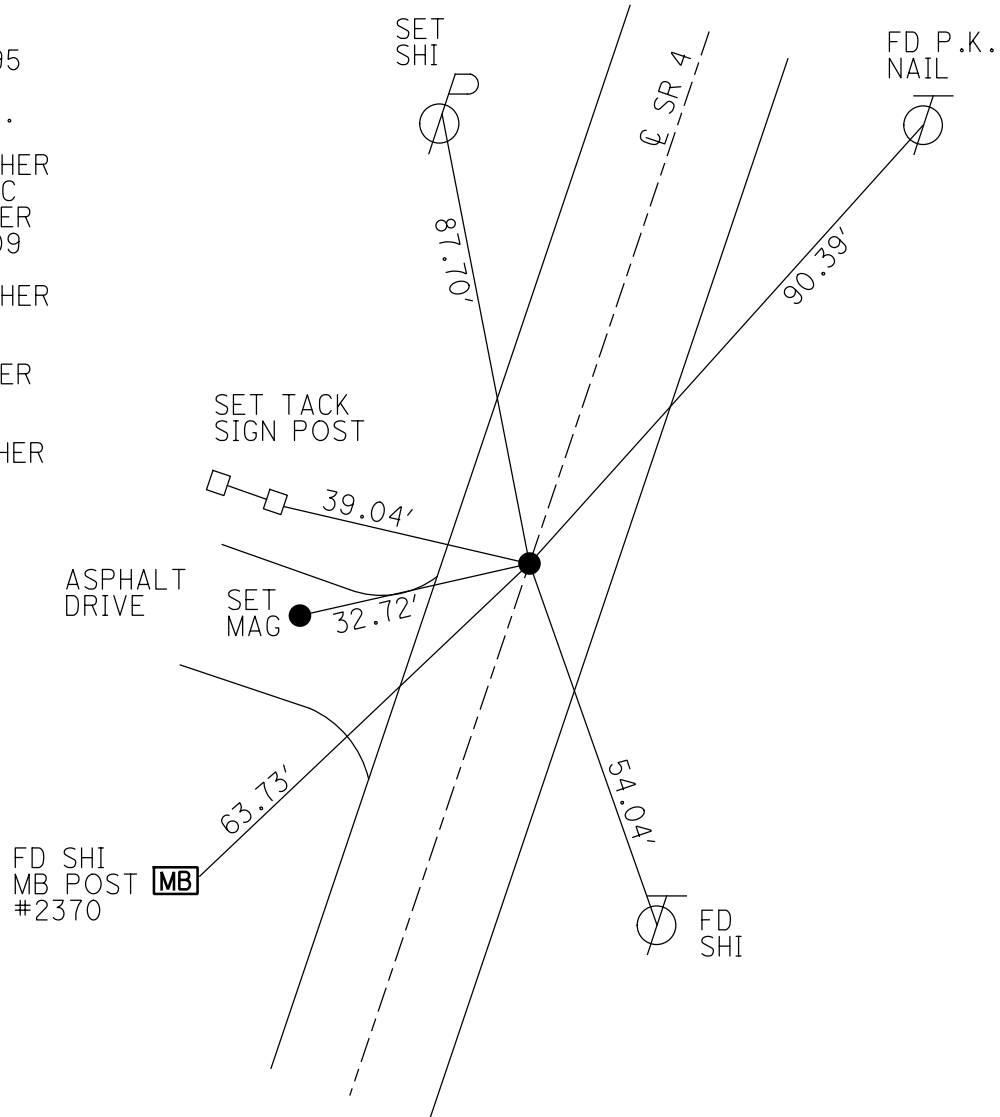
GEOID: NAVD88 2018

GRID: NORTHING: 518744.241

EASTING: 1864939.412



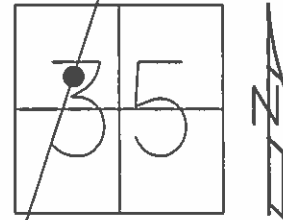
RECORD:
 STA. 373+15.95
 P.K./WASHER
 ATOP R.R.SPK.
 10/1/85
 SET P.K./WASHER
 10/12/1993 RCC
 FD P.K./WASHER
 SV130, 9/15/09
 8/12/10, JMH
 SET P.K./WASHER
 FIN130
 10/21/10 KPM
 FD P.K./WASHER
 REF16
 7/13/23, TDN
 SET MAG/WASHER
 11/1/23, DSA



O.D.O.T. DISTRICT 2 SURVEY OFFICE (USE ONLY)

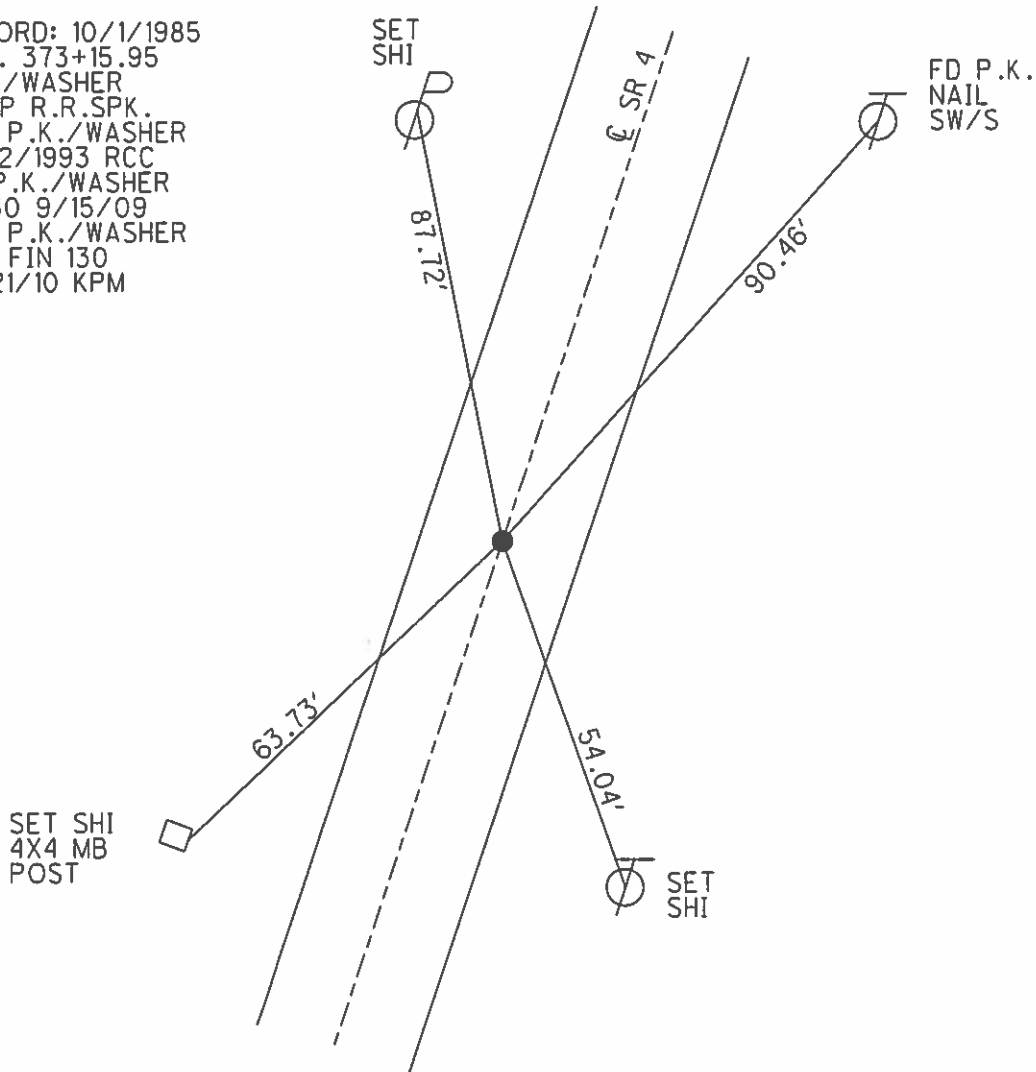
PERSONNEL _____ REFERENCE NO. 16 SHEET 33 OF 41
 NOTES FINTEL DATE 8/12/10 ROUTE SR 4
 H.C. GOLDBERG WEATHER SUNNY COUNTY SENECA
 R.C. HARBAUGH TEMP. 90° TOWNSHIP REED
 _____ SECTION 35
 _____ T 2 N R 17 E

TYPE MONUMENT P.K./WASHER
 ON SURFACE - ~~BELOW~~ ON
 LEFT - ☉ PAV'T - RIGHT ON
10.3' TO RT EDGE PAVEMENT
 S.L.M. 374+09.10



GRID: NORTHING: 518744.241 EASTING: 1864939.349

RECORD: 10/1/1985
 STA. 373+15.95
 P.K./WASHER
 ATOP R.R.SPK.
 SET P.K./WASHER
 10/12/1993 RCC
 FD P.K./WASHER
 SV130 9/15/09
 SET P.K./WASHER
 GPS FIN 130
 10/21/10 KPM



O.D.O.T. DISTRICT 2 SURVEY OFFICE

PERSONNEL

REFERENCE NO. 16

SHEET 30 OF 50

NOTES CHENEY

H.C. RIPPLE

R.C. BARBOUR

GEYMAN

DATE 10-21-1992

WEATHER CLOUDY

TEMP. 40°

ROUTE #4

COUNTY SENECA

TOWNSHIP REED

SECTION 35

T2 N R 17 E

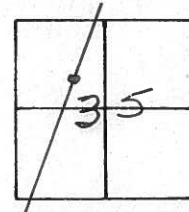
TYPE MONUMENT PK/WASHER

ON SURFACE - ~~BELOW~~ ON

~~LEFT~~ Q. PAV'T. - ~~RIGHT~~ ON

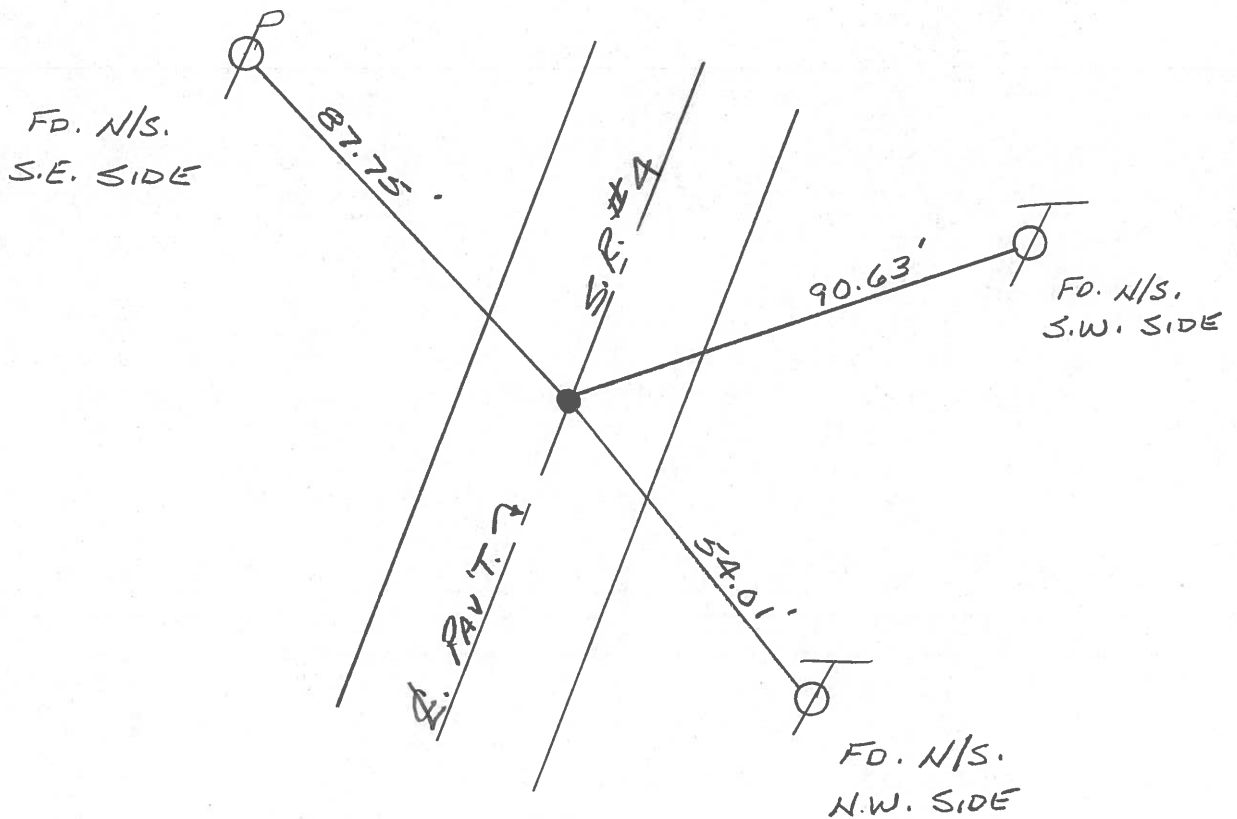
11' TO Rt. EDGE PAVEMENT

S.L.M. 375+10



RECORD: 10-1-1985
 STA. 373+15.95
 PK/WASHER ATOP R.R. SPK.

SET PK/WASHER
 10-12-1993
 R.C.C.



O.D.O.T. DISTRICT 2 SURVEY OFFICE

PERSONNEL

REFERENCE NO. _____

SHEET 5 OF _____

NOTES CROWN

H.C. RIPPLE

R.C. BARBOUR

GEYMAN

DATE 10/1/05

WEATHER SUNNY - WINDY

TEMP. 47°

ROUTE #4

COUNTY SENECA

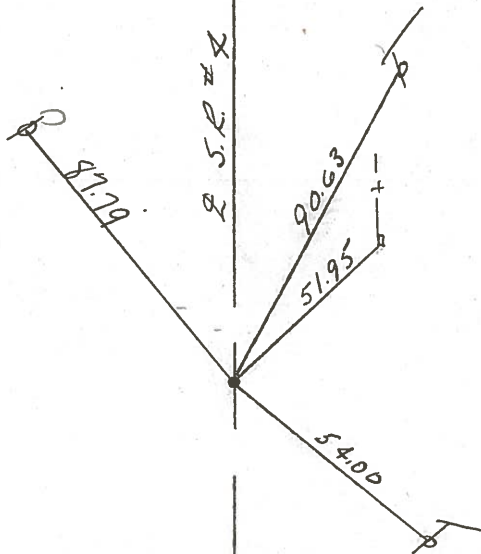
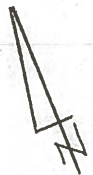
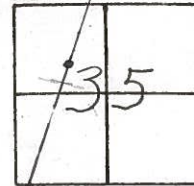
TOWNSHIP REED

SECTION 35

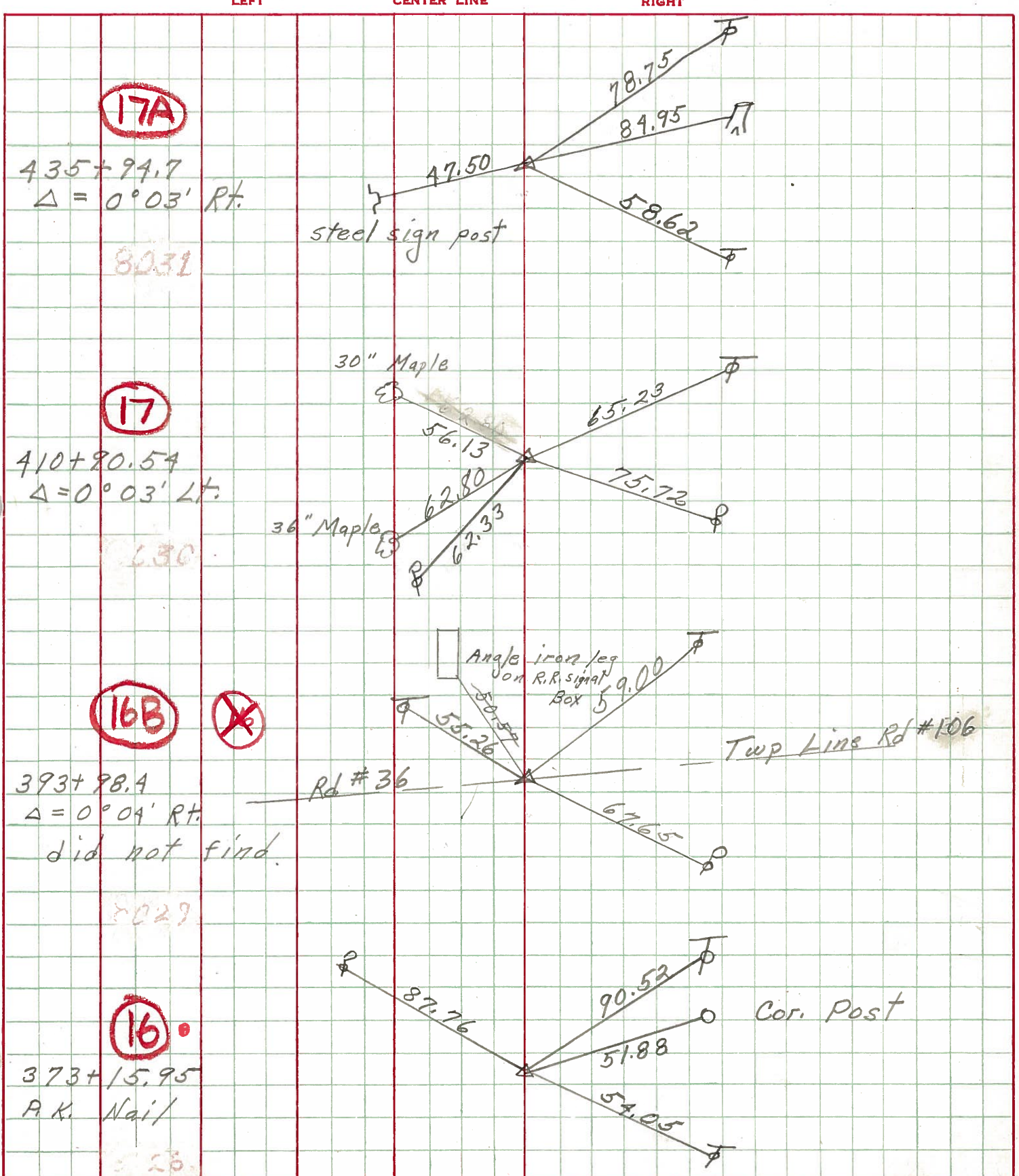
T2 N R 17 E

TYPE MONUMENT P.K. WASHER ATOP R.R. SPIKE
ON SURFACE - BELOW ON SURFACE
LEFT - Q PAV'T. - RIGHT Q PAVT
TO EDGE PAVEMENT
S.L.M. _____

(16)



| | | | | | |
|-------------|-------------------------|-----------|-------|---------|----------------|
| PERSONNEL | TITLE | PERSONNEL | TITLE | COUNTY | DATE |
| Schneider | | Potts | | Seneca | 10-2-68 |
| Mosser | | | | S. R. | 4 |
| Barbour | | | | WEATHER | Cloudy - windy |
| Redding | | | | SEC. | |
| | | | | TEMP. | 65° |
| DESCRIPTION | Ties for control points | | | JOB NO. | |



17A

435 + 94.7
 $\Delta = 0^{\circ}03'$ Rt.
 8031

47.50
 steel sign post

17

410 + 80.54
 $\Delta = 0^{\circ}03'$ Lt.
 630

30" Maple
 56.13
 36" Maple
 62.80
 62.33
 65.23
 75.72

16B



393 + 98.4
 $\Delta = 0^{\circ}04'$ Rt.
 did not find.
 8029

Angle iron leg on R.R. signal Box 5
 59.00
 55.26
 67.65
 Rd # 36
 Twp Line Rd # 106

16

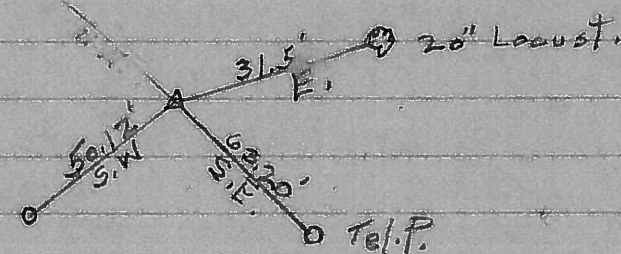
373 + 15.95
 P.K. Nail
 823

87.76
 90.52
 51.88
 54.05
 Cor. Post

240

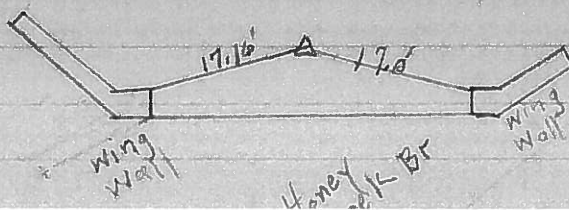
(7A)

242 Could not locate T.P. Pole
Ties gone



246

(10)

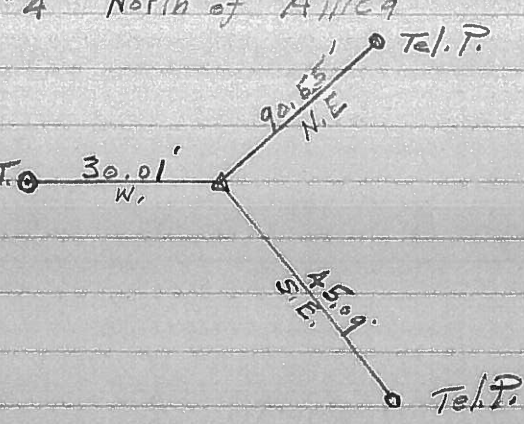


S.R.#4 North of Attic

(16)

253

3/4" Steel Rod in 6" F.T. 30.01'



206+17
078+14
28 03