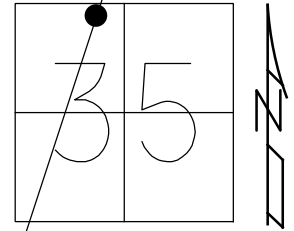


O.D.O.T. DISTRICT 2 SURVEY OFFICE (USE ONLY)

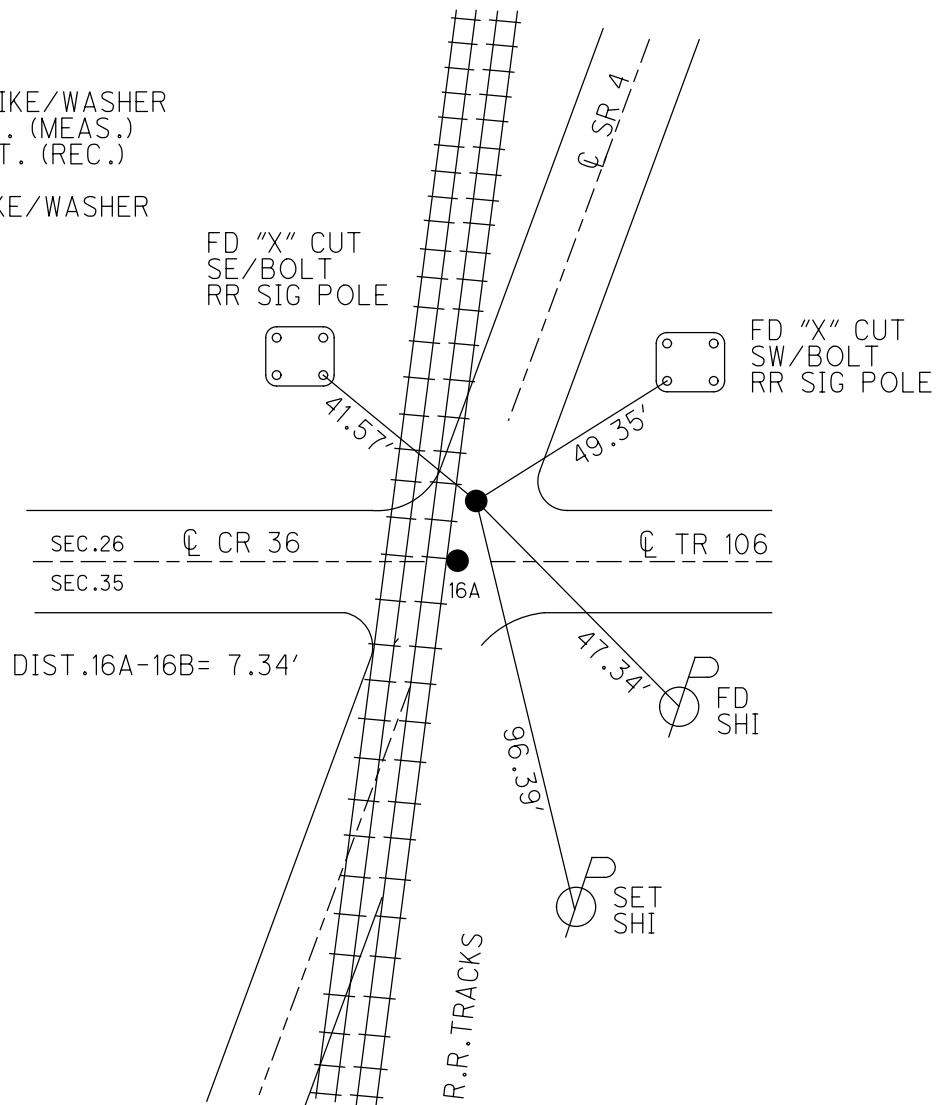
PERSONNEL _____ REFERENCE NO. 16 B SHEET 35 OF 56
 NOTES NIESE DATE 7/13/23 ROUTE SR 4
 H.C. AUBLE WEATHER CLOUDY COUNTY SENECA
 R.C. NIESE TEMP. 75° TOWNSHIP REED
 DWG BY RHOADES PID 101241 SECTION 35
 T 2 N R 17 E

TYPE MONUMENT MAG/WASHER
 ON SURFACE - ~~BELOW~~ ON
 OFFSET 0 PAVEMENT ON LT : RT
- TO - EDGE PAVEMENT
 STATION: 394+94.82



HORZ. DATUM: NAD83 2011 GEOID: NAVD88 2018
 GRID: NORTHING: 520703.401 EASTING: 1865644.971

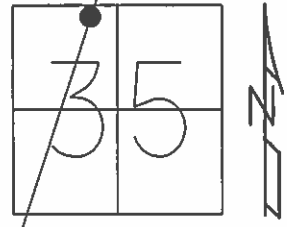
RECORD: P.I.
 STA. 393+99.30
 SET SQ. HEADED SPIKE/WASHER
 $\Delta = 00^\circ 01' 23''$ RT. (MEAS.)
 $\Delta = 00^\circ 02' 00''$ RT. (REC.)
 8/17/88
 FD SQ. HEADED SPIKE/WASHER
 10/13/1993 RCC
 DNF 5/30/01, BWC
 DNF 9/15/09, KPM
 SET P.K./WASHER
 3/03/2011, RJL
 W/STATE PLANE
 COORDINATES
 SET MAG/WASHER
 REF 16A
 7/13/23, DSA



O.D.O.T. DISTRICT 2 SURVEY OFFICE (USE ONLY)

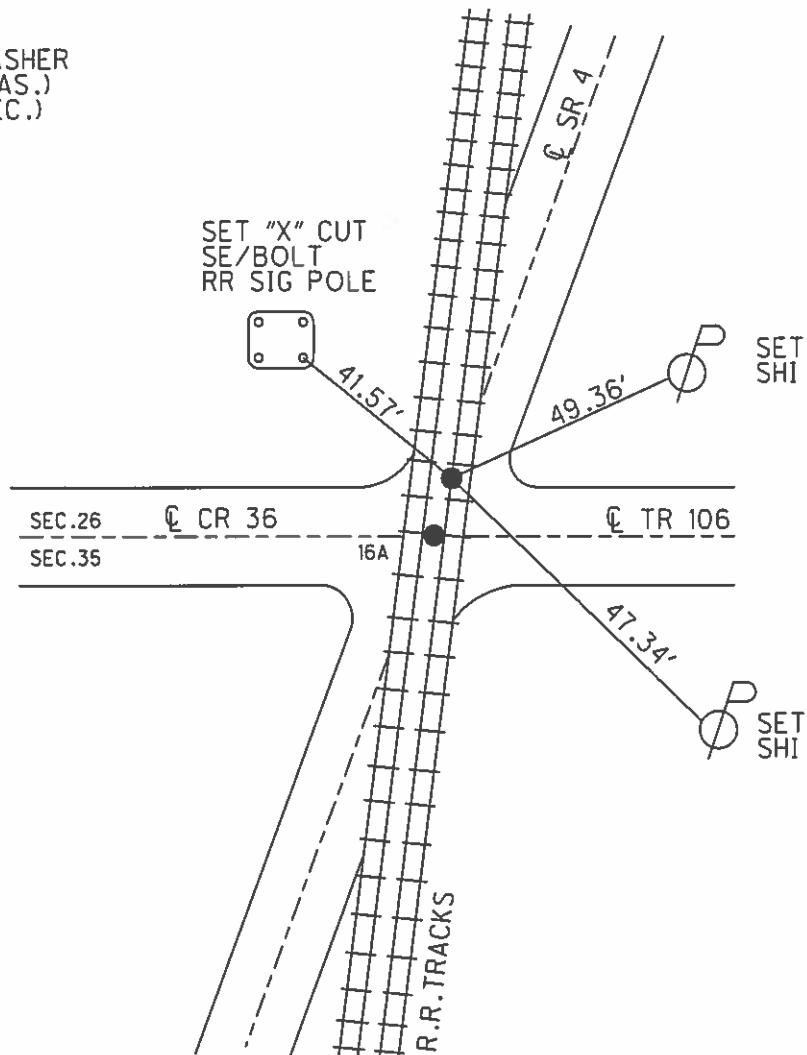
PERSONNEL _____ REFERENCE NO. 16 B SHEET 35 OF 41
 NOTES LUMBREZER DATE 3/3/11 ROUTE SR 4
 H.C. MOSER WEATHER SUNNY COUNTY SENECA
 R.C. LUMBREZER TEMP. 30° TOWNSHIP REED
 _____ SECTION 35
 _____ T 2 N R 17 E

TYPE MONUMENT P.K./WASHER
 ON SURFACE - ~~BELOW~~ ON
 LEFT - ☉ PAV'T - RIGHT ON
 - TO - EDGE PAVEMENT
 S.L.M. 394+94.82



GRID: NORTHING: 520703.402 EASTING: 1865644.993

RECORD: 8/17/1988
 STA. 393+99.30
 SET SQ. HEADED SPK./WASHER
 $\Delta = 00^\circ 01' 23''$ RT. (MEAS.)
 $\Delta = 00^\circ 02' 00''$ RT. (REC.)
 DIST. 16A-16B = 7.33'
 NOTE:
 NOT PAVED-PAINTED
 10/13/1993 RCC
 DNF 5/30/01 BWC
 DNF 9/15/09 KPM
 NEWER R.R. CROSSING
 PAVEMENT, TIES AND
 POINT GONE.
 REESTABLISHED
 3/03/2011, RJL
 W/STATE PLANE
 COORDINATES



O.D.O.T. DISTRICT 2 SURVEY OFFICE

PERSONNEL

REFERENCE NO. 16A

SHEET 31 OF 50

NOTES CHENEY

H.C. RIPPLE

R.C. BAEBOUR

GREYMAN

DATE 10-21-1992

WEATHER CLOUDY

TEMP. 40°

ROUTE #4

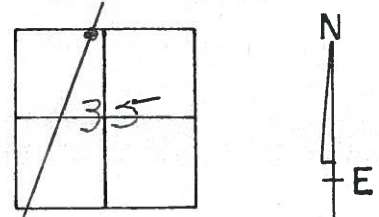
COUNTY SENECA

TOWNSHIP REED

SECTION 35

T2N R17E

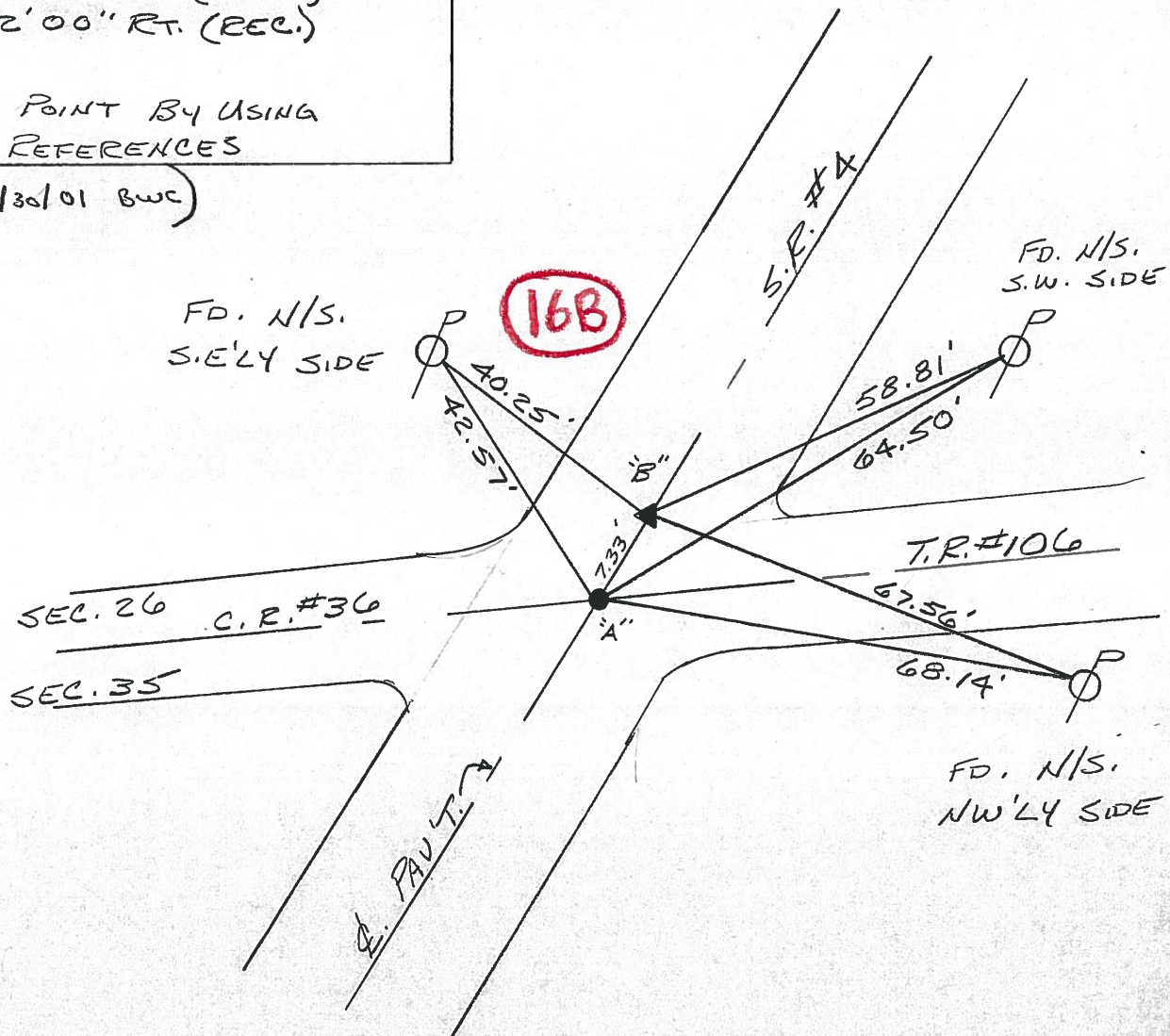
TYPE MONUMENT PK/WASHERS A & B
 ON SURFACE - ~~BELOW~~ ON A & B
~~LEFT~~ RIGHT ON A & B
TO EDGE PAVEMENT
 S.L.M. 395+93



NOT PAVED - PAINTED
10-13-1993
RCC

RECORDED: 8-17-1988
 B" = STA. 393+99.30
 SET SQ. HEADED SPK./WASHER
 $\Delta = 00^{\circ}01'30''$ RT. (MEAS.)
 $\Delta = 00^{\circ}02'00''$ RT. (REC.)
 A" SET POINT BY USING
 COUNTY REFERENCES

(DNF 5/30/01 BWC)



O.D.O.T. DISTRICT 2 SURVEY OFFICE

PERSONNEL _____

REFERENCE NO. _____

SHEET _____ OF _____

NOTES CROWN

H.C. RIPPLE

R.G. BARBOUR

GEYMAN

DATE 8/17/88

WEATHER SUNNY

TEMP. 83°

ROUTE # 4

COUNTY SENECA

TOWNSHIP REED

SECTION 35

T 2 N R 17 E

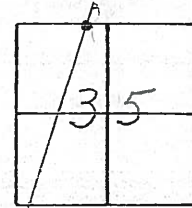
TYPE MONUMENT SET SQ. HEADED SPK & WASHER

ON SURFACE - BELOW _____

LEFT - CL PAV'T. - RIGHT _____

TO _____ EDGE PAVEMENT

S.L.M. _____



P.I.

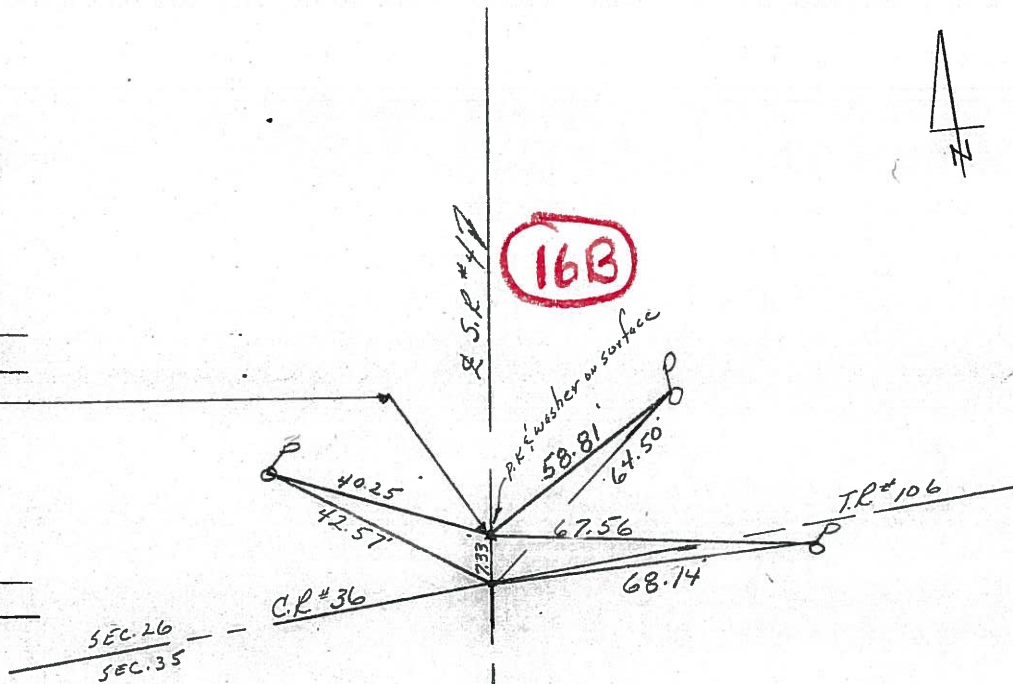
$\Delta = 00^{\circ} 01' 30''$ Rt. MEAS

$\Delta = 00^{\circ} 02' 00''$ Rt. Loc.

Sta. 393+99.30

SET POINT by Using County

REFERENCES



O.D.O.T. DISTRICT 2 SURVEY OFFICE

PERSONNEL _____

REFERENCE NO. 16

SHEET 6 OF _____

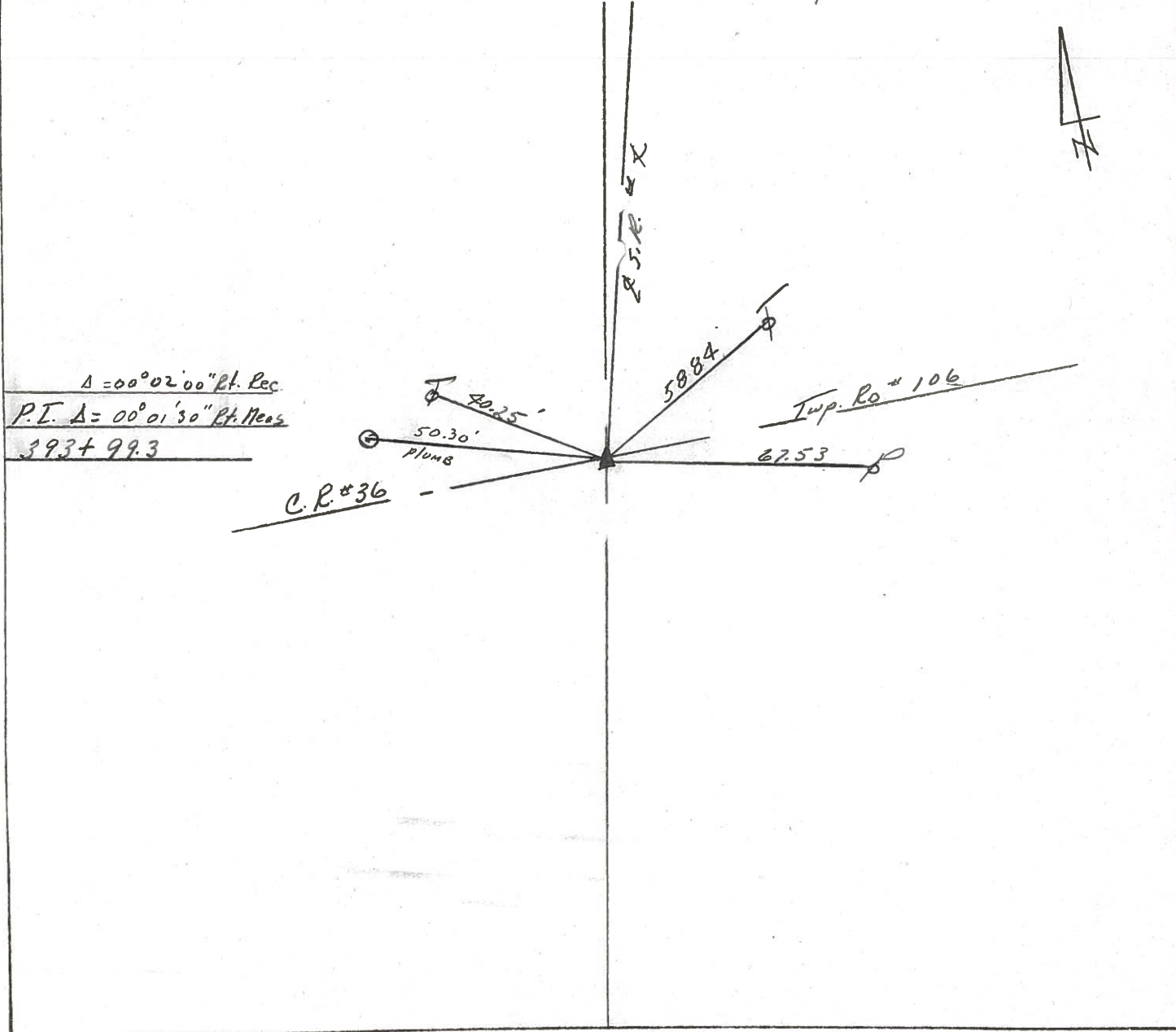
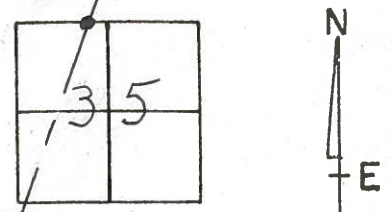
NOTES CRONIN
 H.C. RIPPLE
 R.C. BARBOUR
GEYMAN

DATE 10/85
 WEATHER SUNNY-WINDY
 TEMP. 78°

ROUTE 44
 COUNTY JENECA
 TOWNSHIP LEED
 SECTION 35
T 2 N R 17 E

TYPE MONUMENT P.K. WASHNER AT TOP HARLOW
ON SURFACE - BELOW TOUTH (19" BELOW SURFACE)
LEFT - & PAV'T. - RIGHT & PAUT
TO EDGE PAVEMENT
 S.L.M. _____

16B



PERSONNEL TITLE PERSONNEL TITLE

COUNTY Seneca DATE 10-2-68

Schneider

Potts

S. R. 4 WEATHER Cloudy - windy

Mosser

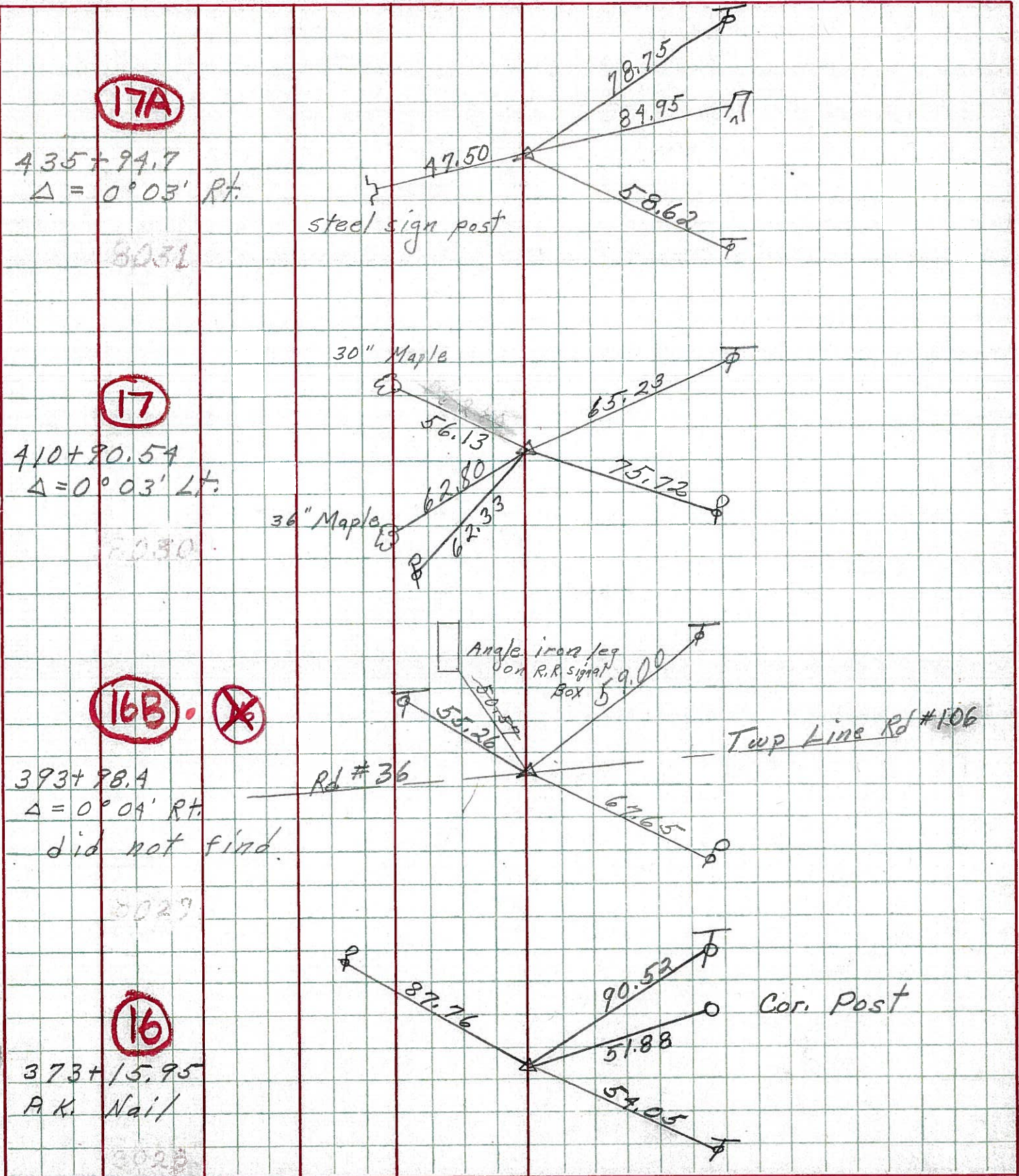
SEC. TEMP. 65°

Barbour

Redding

DESCRIPTION Ties for control Points JOB NO.

LEFT CENTER LINE RIGHT



PERSONNEL TITLE PERSONNEL TITLE

COUNTY Seneca

DATE 10-2-68

Schneider
Mason
Barbour
Redding

S. R. 4

WEATHER Cloudy - Windy

SEC.

TEMP 65°

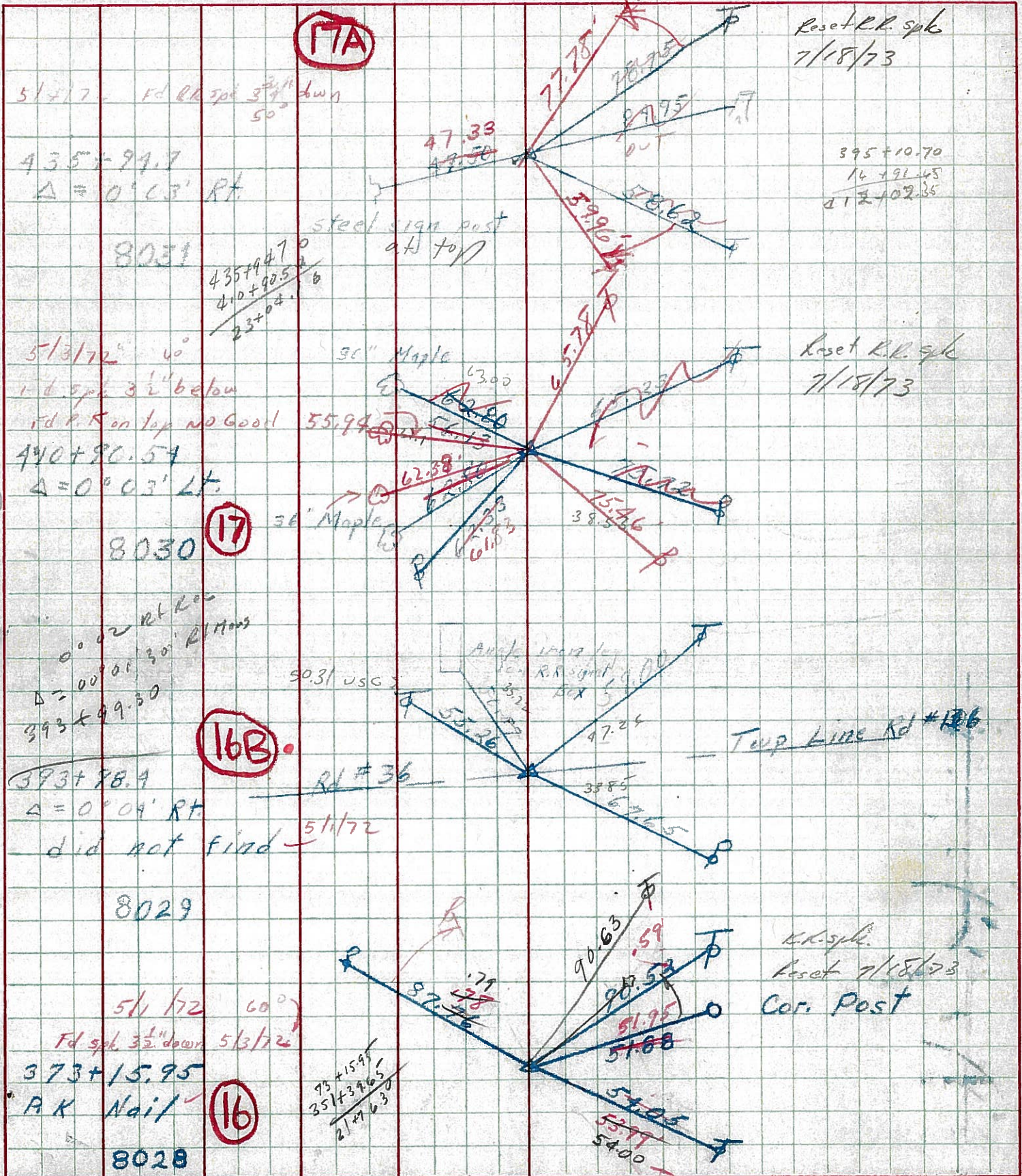
DESCRIPTION Ties for Control Points

JOB NO.

LEFT

CENTER LINE

RIGHT



PERSONNEL TITLE PERSONNEL TITLE

COUNTY Seneca DATE

Kowaleski
KraBill
Brooks

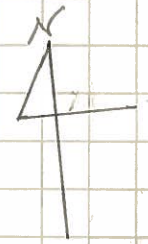
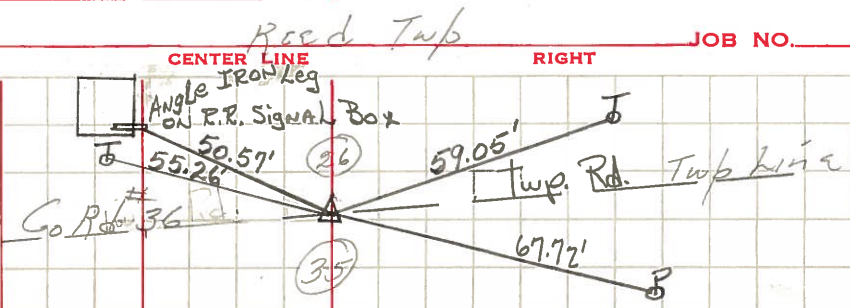
S. R. 4 WEATHER

SEC. TEMP.

DESCRIPTION LEFT CENTER LINE RIGHT JOB NO.

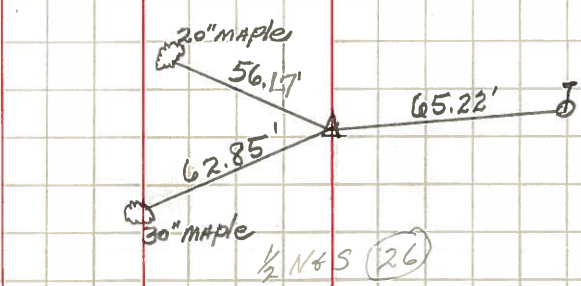
393+98.4 #254
P.K. NAIL 1-21-64
P.I. Δ = 0°-04' RT.

16B



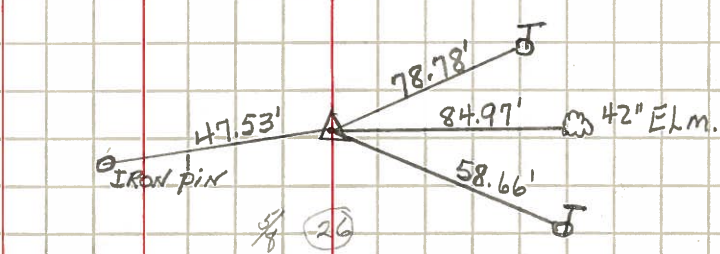
410+90.54 #255
P.I. Δ = 0°-03' LT.
P.K. NAIL 1-21-64

17



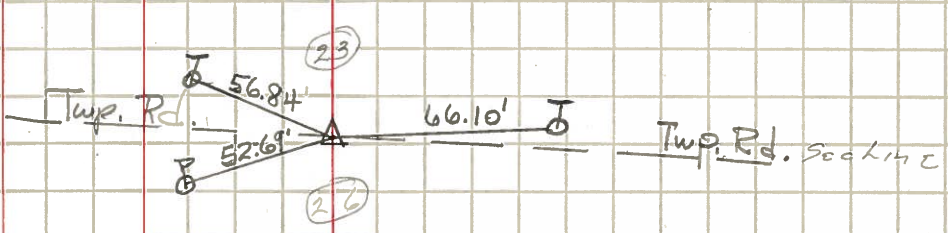
435+94.7 #256
P.I. Δ = 0°-03' RT.
P.K. NAIL 1-21-64

17A



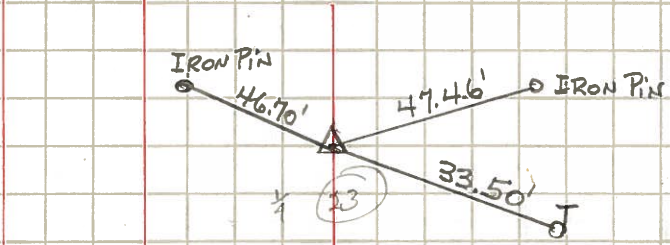
450+02.80 #257
P.I. Δ = 0°-10'-30" LT.
P.K. NAIL 1-21-64

18



466+97.65 257-A
P.I. Δ = 0°-11'-30" Lt.
P.K. NAIL 1-21-64

18A



ALL MEASUREMENTS FOR THIS POINT ONLY ARE PLUMBED.