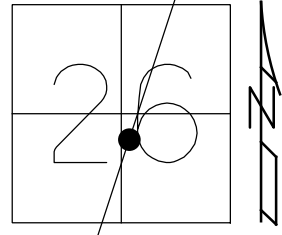


O.D.O.T. DISTRICT 2 SURVEY OFFICE (USE ONLY)

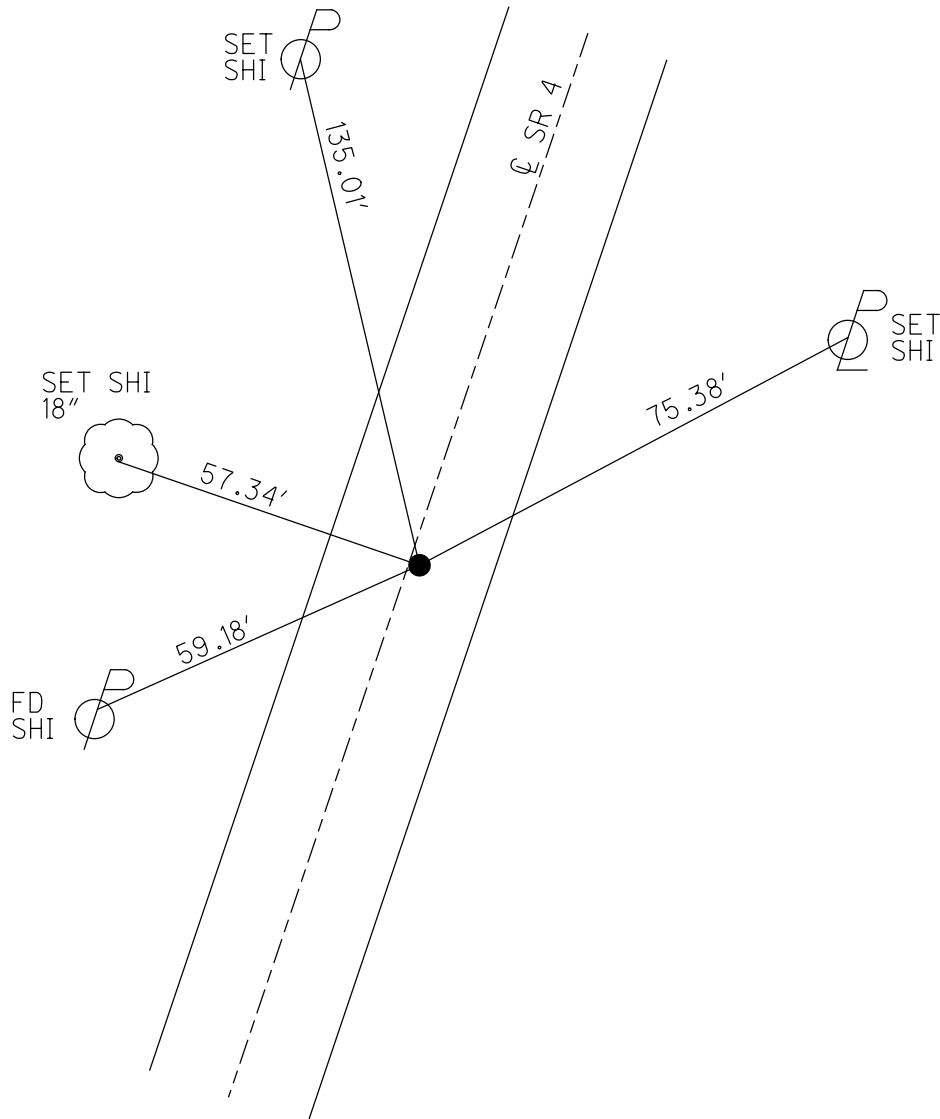
PERSONNEL _____ REFERENCE NO. 17 SHEET 36 OF 56
 NOTES ASTON DATE 7/13/23 ROUTE SR 4
 H.C. AUBLE WEATHER SUNNY COUNTY SENECA
 R.C. NIESE TEMP. 85° TOWNSHIP REED
 RHOADES SECTION 26
 DWG BY RHOADES PID 101241 T 2 N R 17 E

TYPE MONUMENT LG.R.R.SPIKE
~~ON SURFACE~~ - BELOW 6"
 OFFSET CL PAVEMENT 0.6' ~~LT~~ : RT
10' TO RT EDGE PAVEMENT
 STATION: 411+82.43



HORZ.DATUM: NAD83 2011 GEOID: NAVD88 2018
 GRID: NORTHING: 522294.302 EASTING: 1866218.755

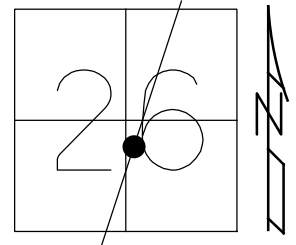
RECORD: P.I.
 STA. 410+90.54
 $\Delta = 0^\circ 03' 00''$ LT
 P.K./WASHER
 ATOP R.R.SPIKE
 10/1/85
 SET P.K./WASHER
 7/2/01, BWC
 FD P.K./WASHER
 SV131
 9/15/09
 8/13/10, KPM
 FD P.K.NAIL
 REF17
 4/18/19
 8/19/19, JFO
 FD LG.R.R.SPIKE
 6" DOWN
 REF17
 7/17/23, TDN



O.D.O.T. DISTRICT 2 SURVEY OFFICE (USE ONLY)

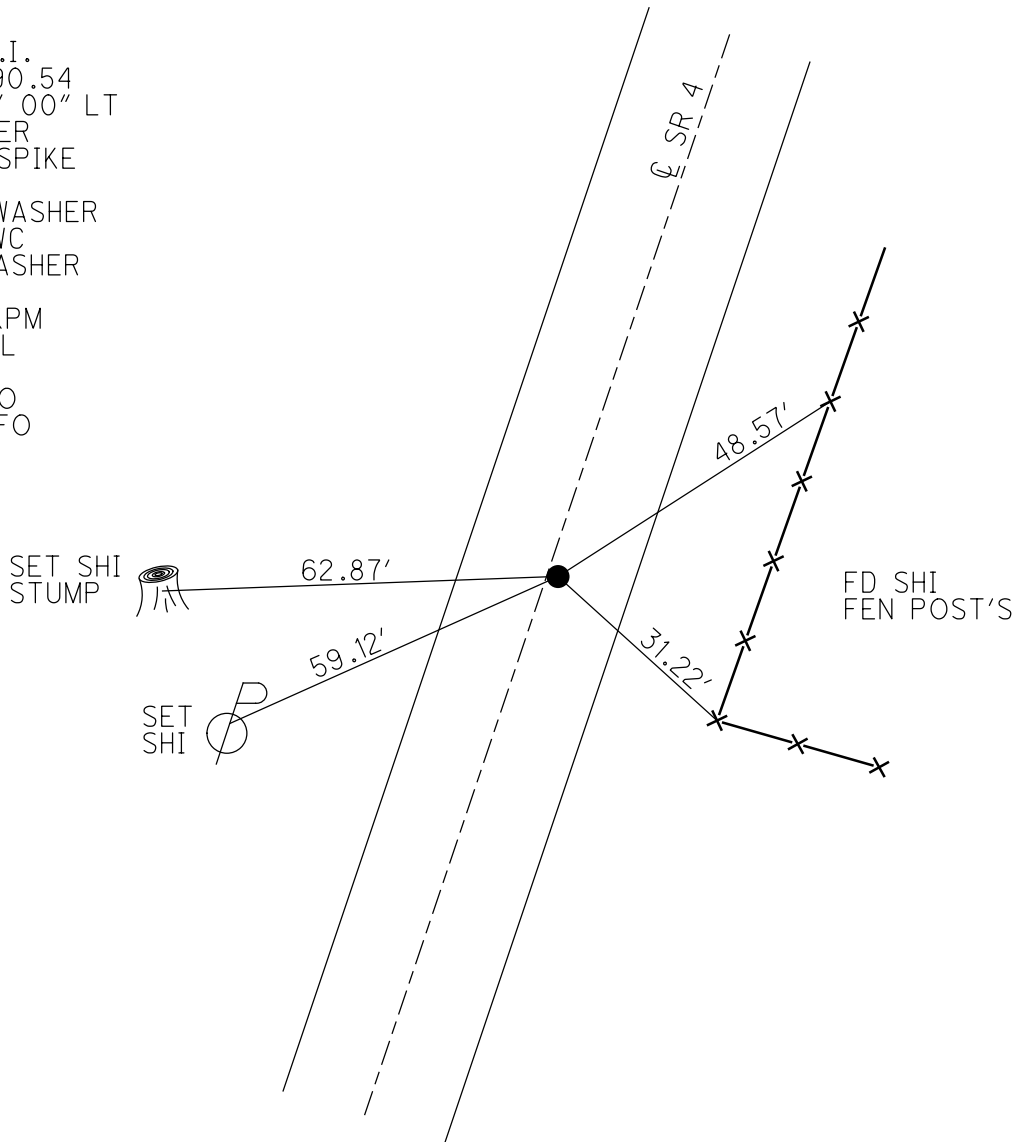
PERSONNEL _____ REFERENCE NO. 17 SHEET 36 OF 41
 NOTES MOSE DATE 8/13/10 ROUTE SR 4
 H.C. GOLDBERG WEATHER SUNNY COUNTY SENECA
 R.C. FINTEL TEMP. 85° TOWNSHIP REED
 DWG BY NASON PID 107060 SECTION 26
 T 2 N R 17 E

TYPE MONUMENT P.K./WASHER
 ON SURFACE - ~~BELOW~~ ON
 OFFSET 0.6' LT : RT
10' TO RT EDGE PAVEMENT
 STATION: 411+82.43



HORIZ.DATUM: NAD83 2011 GEOID: 2012A
 GRID: NORTHING: 522294.088 EASTING: 1866218.728

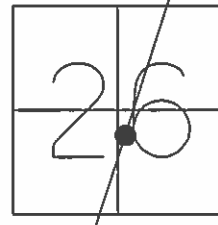
RECORD: P.I.
 STA. 410+90.54
 $\Delta = 00^{\circ}03' 00''$ LT
 P.K./WASHER
 ATOP R.R.SPIKE
 10/1/85
 SET P.K./WASHER
 7/2/01, BWC
 FD P.K./WASHER
 SV131
 9/15/09, KPM
 FD P.K.NAIL
 REF17
 4/18/19, JFO
 8/19/19, JFO



O.D.O.T. DISTRICT 2 SURVEY OFFICE (USE ONLY)

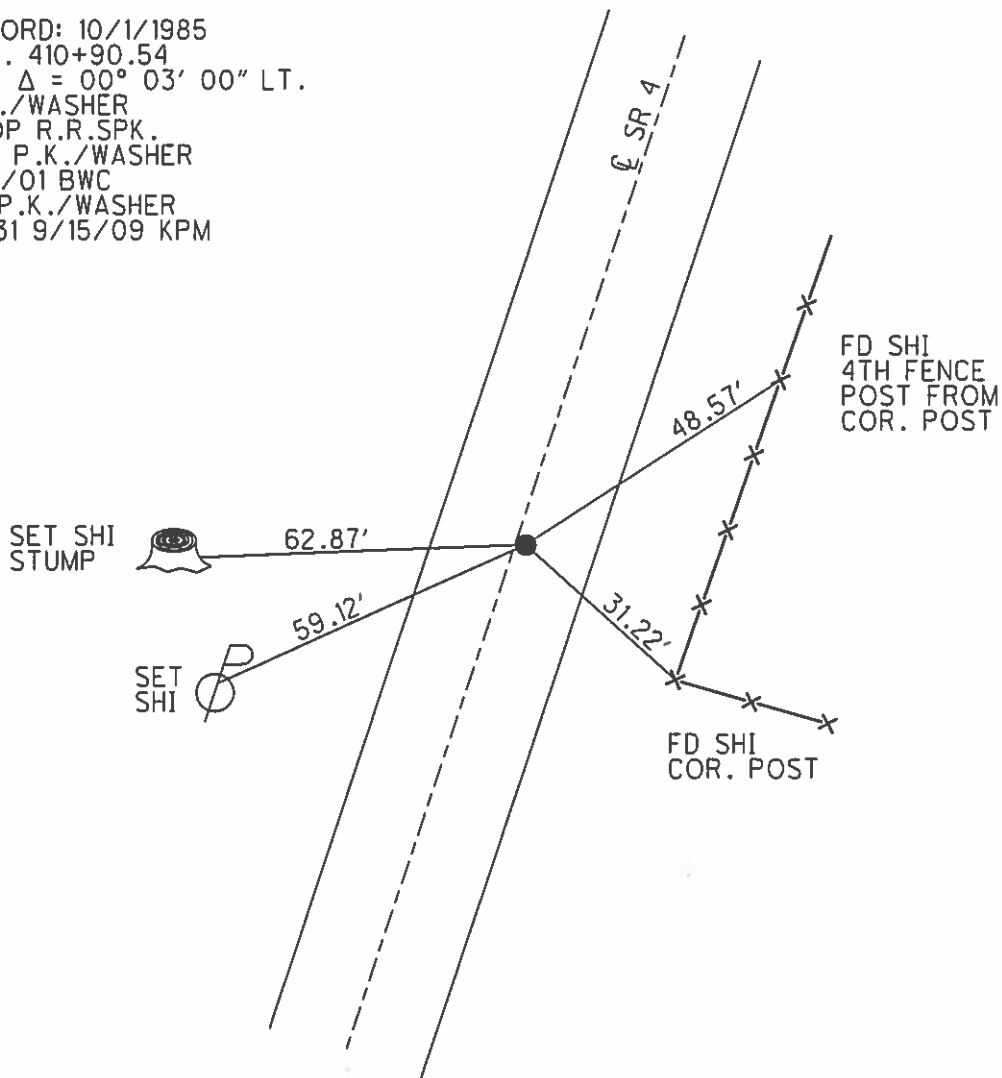
PERSONNEL	REFERENCE NO.	<u>17</u>	SHEET	<u>36</u>	OF	<u>41</u>
NOTES	<u>MOSER</u>	DATE	<u>8/13/10</u>	ROUTE	<u>SR 4</u>	
H.C.	<u>GOLDBERG</u>	WEATHER	<u>SUNNY</u>	COUNTY	<u>SENECA</u>	
R.C.	<u>FINTEL</u>	TEMP.	<u>85°</u>	TOWNSHIP	<u>REED</u>	
				SECTION	<u>26</u>	
				T	<u>2</u>	N
				R	<u>17</u>	E

TYPE MONUMENT P.K./WASHER
 ON SURFACE - ~~BELOW~~ ON
~~LEFT~~ - CL PAV'T - RIGHT 0.6'
10' TO RT EDGE PAVEMENT
 S.L.M. 411+82.43



GRID: NORTHING: 522294.1492 EASTING: 1866218.6387

RECORD: 10/1/1985
 STA. 410+90.54
 P.I. Δ = 00° 03' 00" LT.
 P.K./WASHER
 ATOP R.R.SPK.
 SET P.K./WASHER
 7/2/01 BWC
 FD P.K./WASHER
 SV131 9/15/09 KPM



O.D.O.T. DISTRICT 2 SURVEY OFFICE

PERSONNEL

REFERENCE NO. 17

SHEET 1 OF 19

NOTES Cordes

H.C. Brown

DATE 5-31-01

ROUTE 4

R.C. Homan

WEATHER Sunny

COUNTY Seneca

TEMP. 62°

TOWNSHIP Reed

SECTION 26

T2 N R17 E

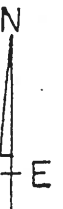
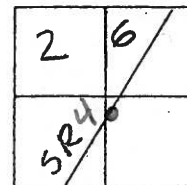
TYPE MONUMENT PK/Washer

ON SURFACE - ~~BELOW~~ on

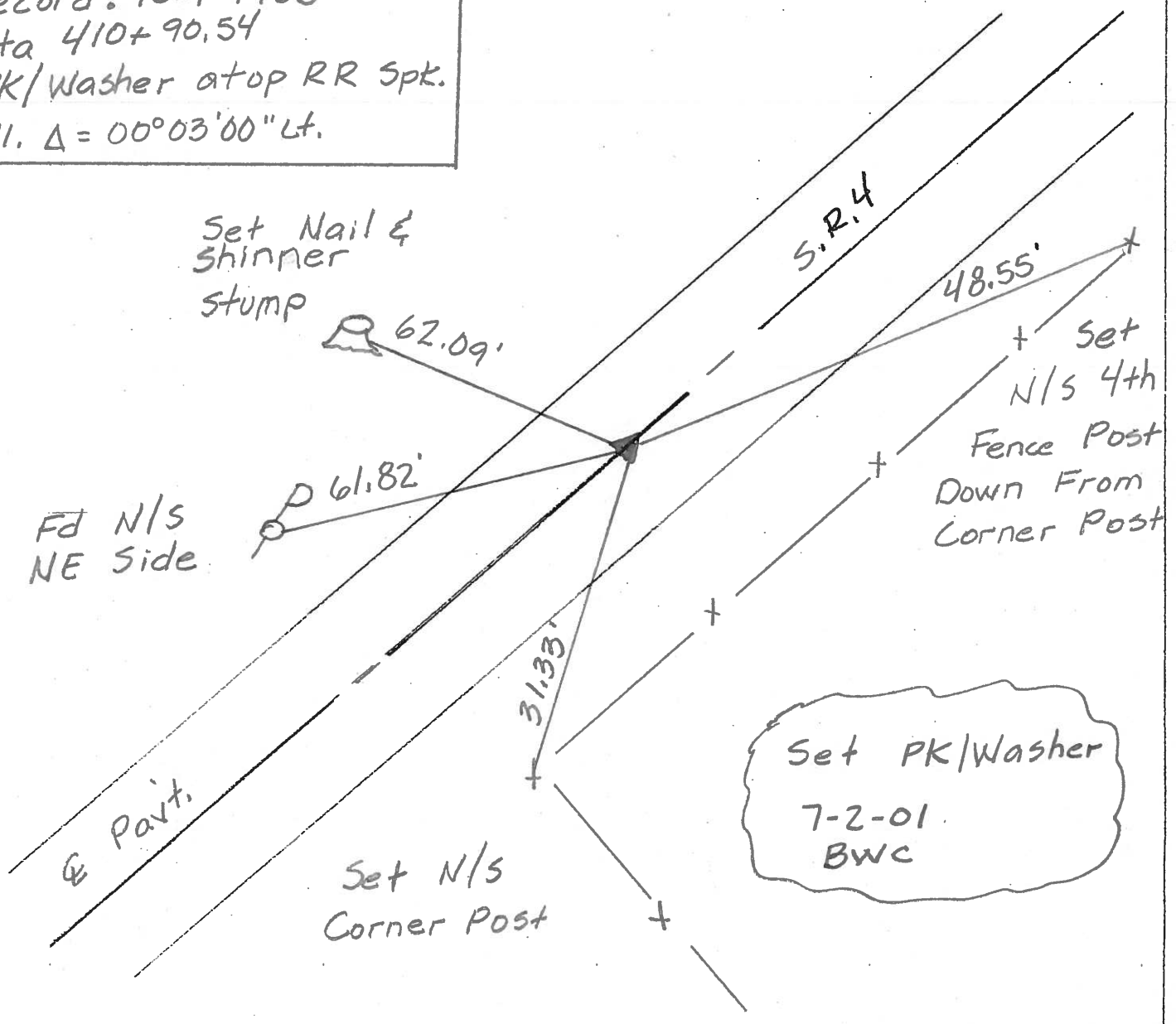
~~LEFT~~ - & PAVT. - RIGHT 1'

10' TO R+ EDGE PAVEMENT

S.L.M. 412+84



Record: 10-1-1985
 Sta 410+90.54
 PK/Washer atop RR Spt.
 P.I. Δ = 00°03'00" Lt.



Resurfaced 2001

O.D.O.T. DISTRICT 2 SURVEY OFFICE

PERSONNEL

REFERENCE NO. 17

SHEET 32 OF 50

NOTES CHENEY

H.C. RIPPLE

R.C. BARBOUR

GEYMAN

DATE 10-21-1992

WEATHER Cloudy

TEMP. 45°

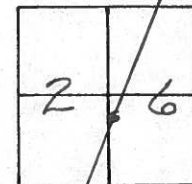
ROUTE #4

COUNTY SENECA

TOWNSHIP REED

SECTION 26

T2 N R 17 E



TYPE MONUMENT PK/WASHER

ON SURFACE - ~~BELOW~~ ON

~~11' - C~~ PAV'T. - RIGHT 1'

10' TO R. EDGE PAVEMENT

S.L.M. 412+84

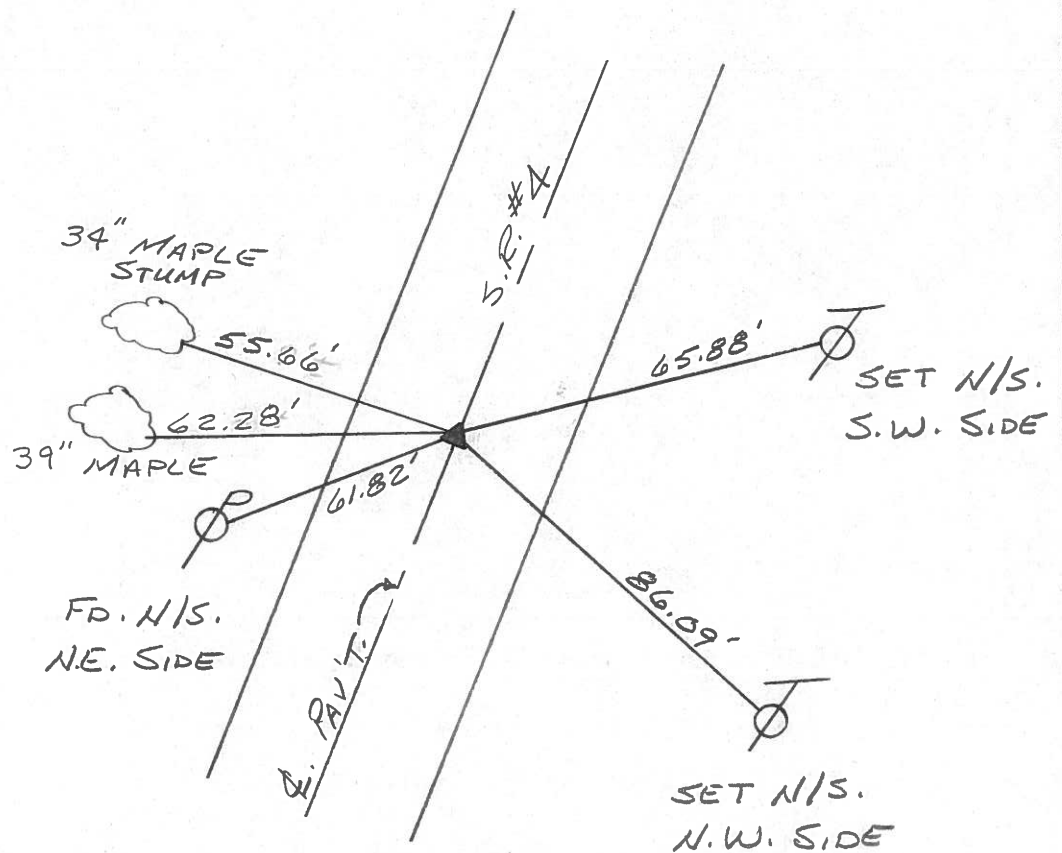
RECORD: 10-1-1985

STA. 410+90.54

PK/WASHER ATOP RR. SPK.

P.I. $\Delta = 00^{\circ}03'00''$ LT.

SET PK/WASHER
10-13-1993
RCC



O.D.O.T. DISTRICT 2 SURVEY OFFICE

PERSONNEL _____

REFERENCE NO. _____

SHEET 7 OF _____

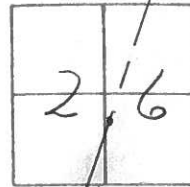
NOTES CRONIN
 H.C. RIPPLE
 R.C. BARBOUR
GEYMAN

DATE 10/1/85
 WEATHER SUNNY - WINDY
 TEMP. 49°

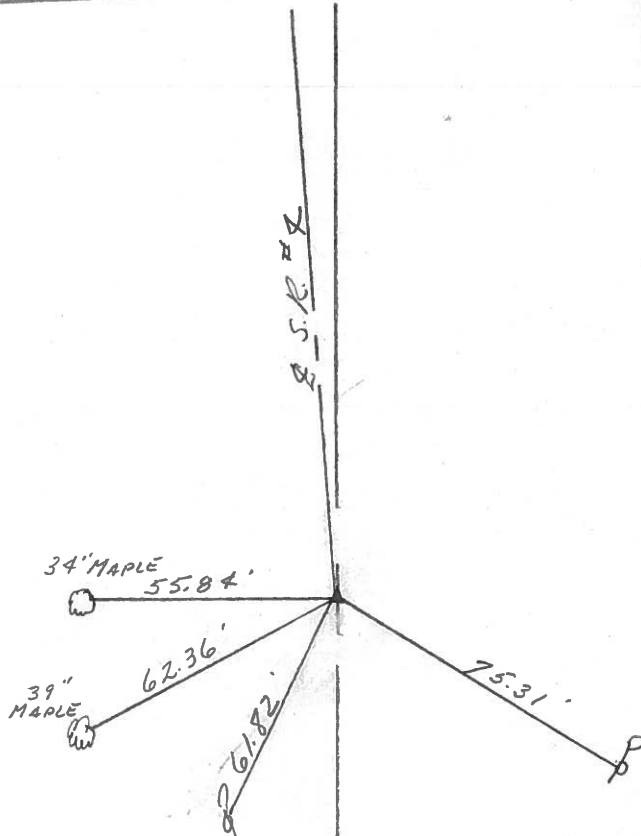
ROUTE #4
 COUNTY SENECA
 TOWNSHIP REED
 SECTION 26
 T 2 N R 17 E

TYPE MONUMENT P.K. WASHER AT TOP R.R. SPIKE
 ON SURFACE - BELOW ON SURFACE
 LEFT - Q PAW'T. - RIGHT Q PAUT
 TO EDGE PAVEMENT
 S.L.M. _____

17



P.I. $\Delta = 00^{\circ}03'00''$ Lt.
410 + 90.54



PERSONNEL TITLE PERSONNEL TITLE

COUNTY Seneca DATE 10-2-68

Schneider _____ Potts _____

S. R. 4 WEATHER Cloudy - windy

Mosser _____ _____

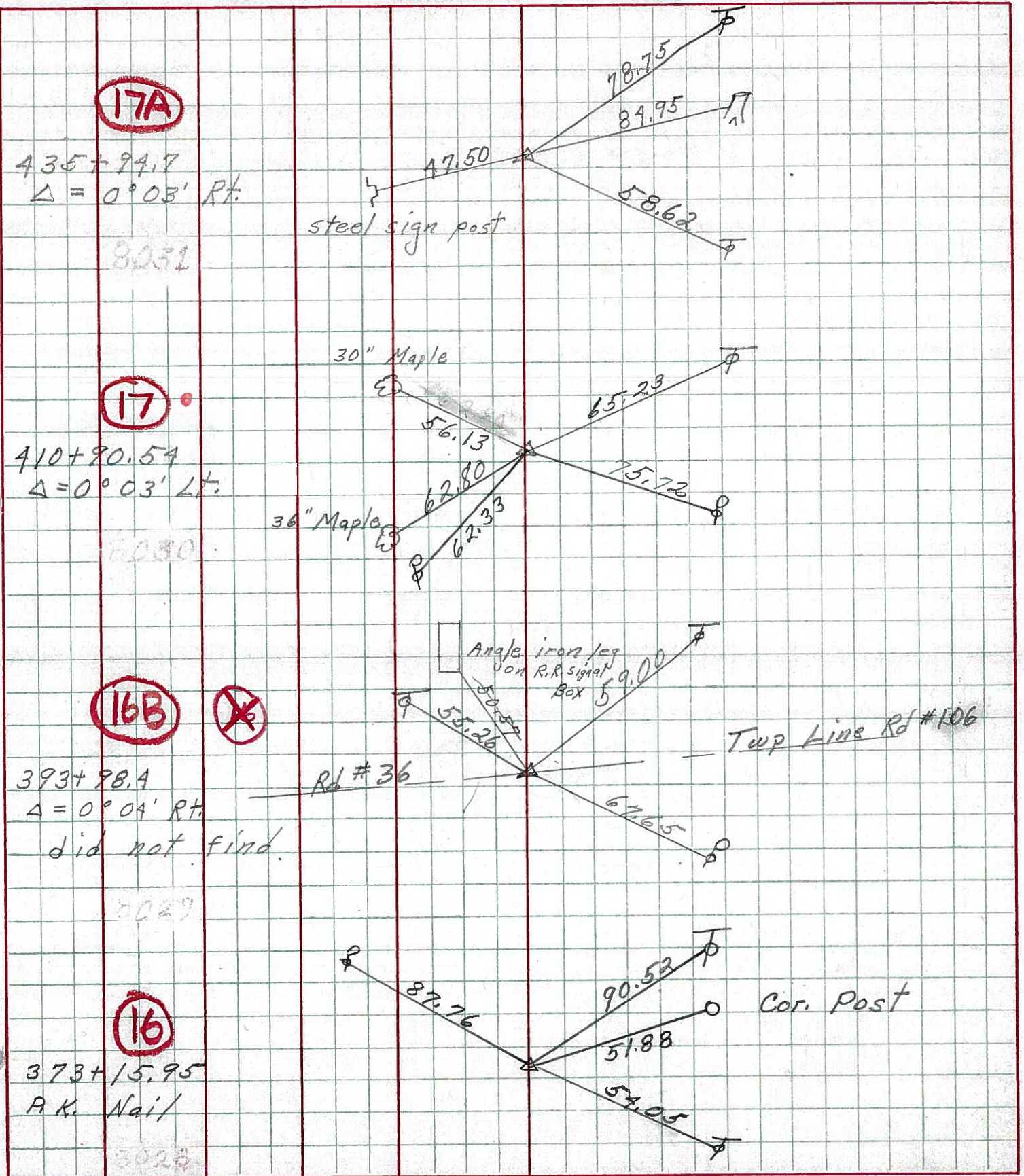
SEC. _____ TEMP. 65°

Barbour _____ _____

Redding _____ _____

DESCRIPTION Ties for control Points JOB NO. _____

LEFT CENTER LINE RIGHT



17A

435+94.7
Δ = 0°03' Rt.

8031

47.50
steel sign post

78.75

84.95

58.62

17

410+80.54
Δ = 0°03' Lt.

8030

30" Maple

56.13

62.80

62.33

65.23

75.72

36" Maple

16B

~~16~~

393+98.4
Δ = 0°04' Rt.

did not find

8029

Angle iron leg
on R.R. signal
Box 5

55.26

9.00

67.65

Rd #36

Top Line Rd #106

16

373+15.95
A.K. Nail

8028

87.76

90.53

51.88

54.05

Cor. Post

PERSONNEL TITLE PERSONNEL TITLE

COUNTY Seneca DATE 10-2-68

Schneider _____ Potts _____

S. R. 4 WEATHER cloudy - sun

Mosser _____

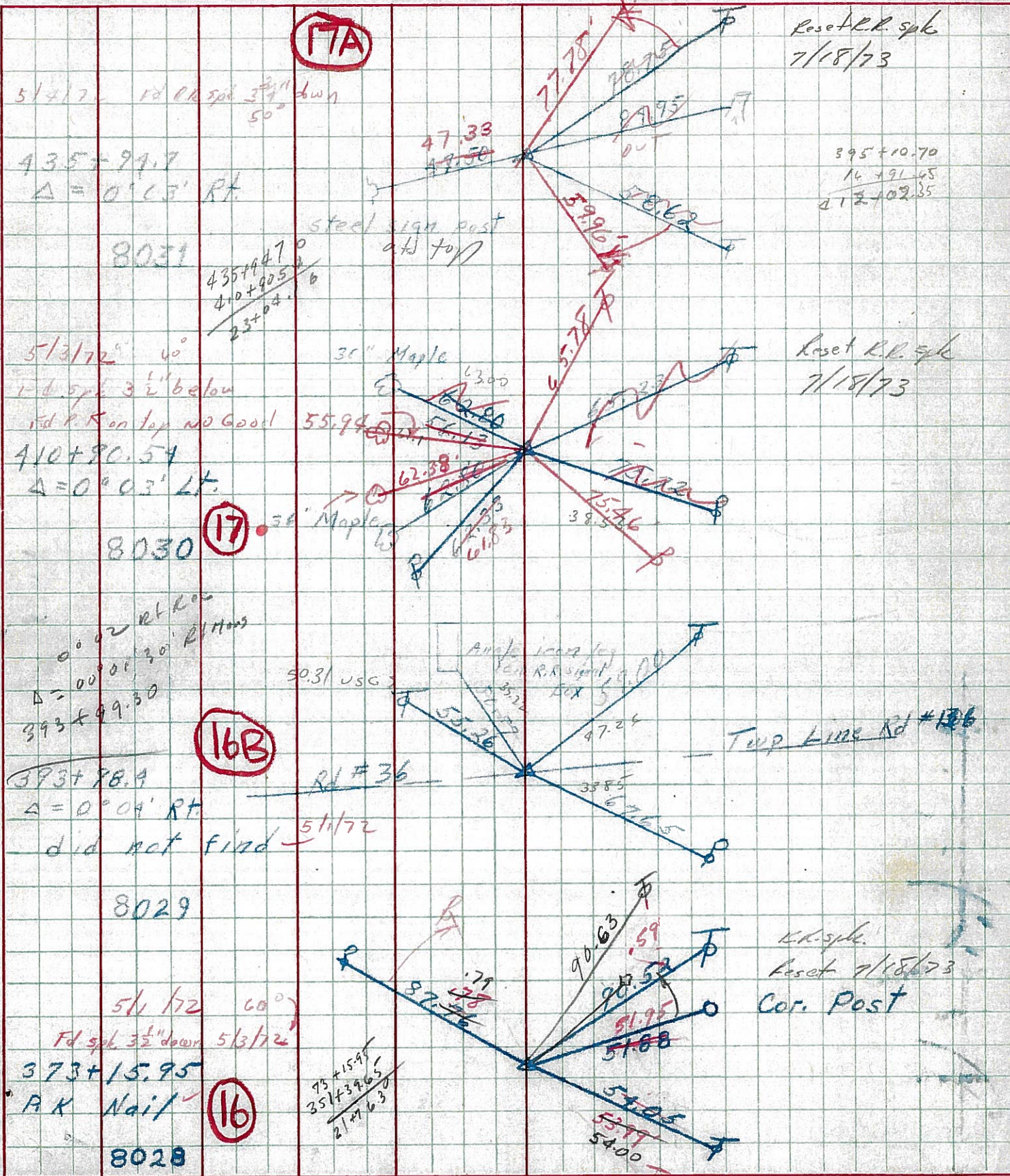
SEC. _____ TEMP. 65°

Barbour _____

Redding _____

DESCRIPTION TIES for central Points JOB NO. _____

LEFT CENTER LINE RIGHT

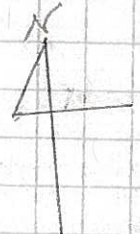
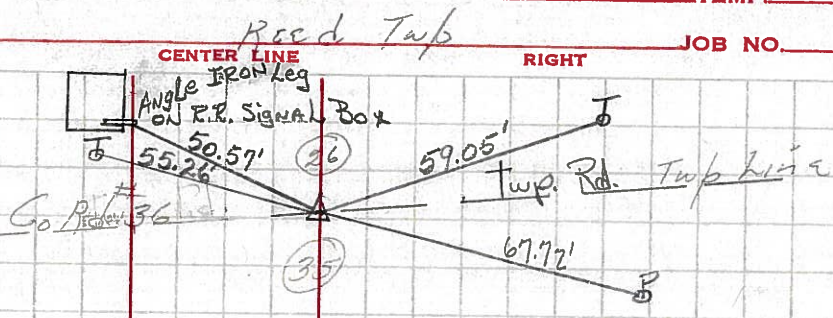


PERSONNEL TITLE PERSONNEL TITLE COUNTY Seneca DATE
 Kowaleski _____
 Krabill _____ S. R. 4 WEATHER _____
 Brooks _____ SEC. _____ TEMP. _____

DESCRIPTION LEFT CENTER LINE RIGHT JOB NO.

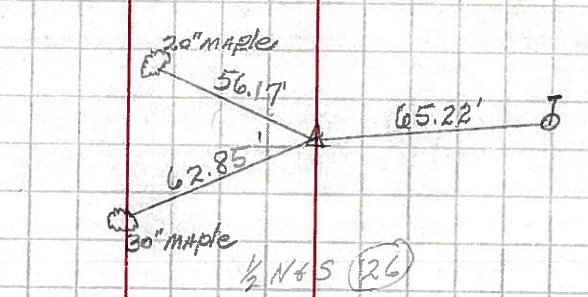
393+98.4 #254
 P.K. NAIL 1-21-64
 P.I. Δ = 0°-04' RT.

16B



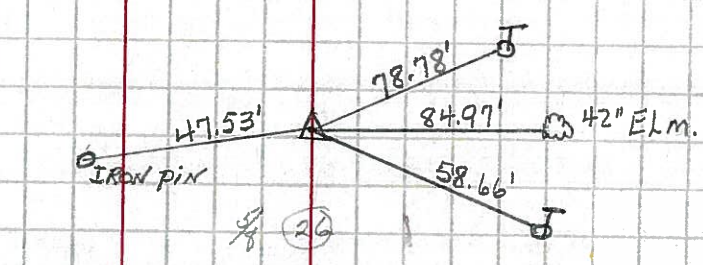
410+90.54 #255
 P.I. Δ = 0°-03' LT.
 P.K. NAIL 1-21-64

17



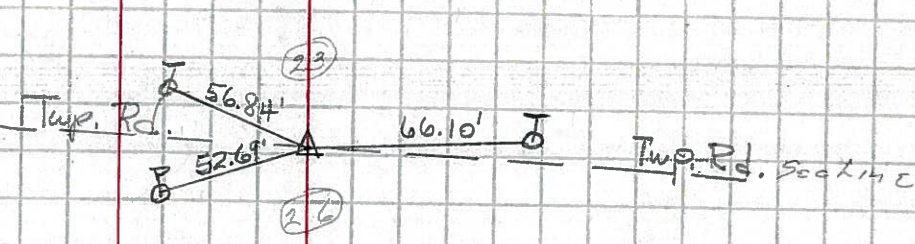
435+94.7 #256
 P.I. Δ = 0°-03' RT.
 P.K. NAIL 1-21-64

17A



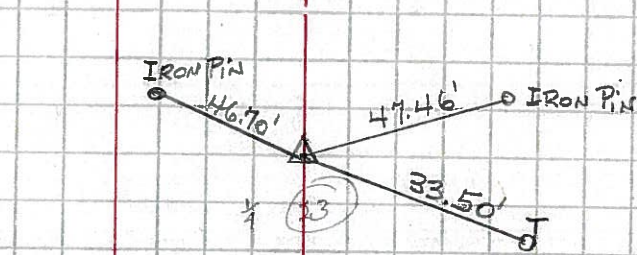
450+02.80 #257
 P.I. Δ = 0°-10'-30" LT.
 P.K. NAIL 1-21-64

18



466+97.65 #257-A
 P.I. Δ = 0°-11'-30" Lt.
 P.K. NAIL 1-21-64

18A



ALL MEASUREMENTS FOR THIS POINT ONLY ARE PLUMBED.