

O.D.O.T. DISTRICT 2 SURVEY OFFICE (USE ONLY)

PERSONNEL

REFERENCE NO. 17 A

SHEET 37 OF 41

NOTES MOSEY

DATE 8/13/10

ROUTE SR 4

H.C. GOLDBERG

WEATHER SUNNY

COUNTY SENECA

R.C. FINTEL

TEMP. 85°

TOWNSHIP VENICE

DWG BY NASON

PID 107060

SECTION 26

T 2 N R 17 E

TYPE MONUMENT P.K./WASHER

ON SURFACE - ~~BELOW~~ ON

OFFSET C PAVEMENT 0.5' LT : RT
9.8' TO LT EDGE PAVEMENT

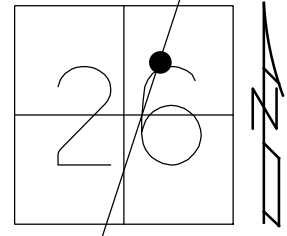
STATION: 436+87.57

HORIZ.DATUM: NAD83 2011

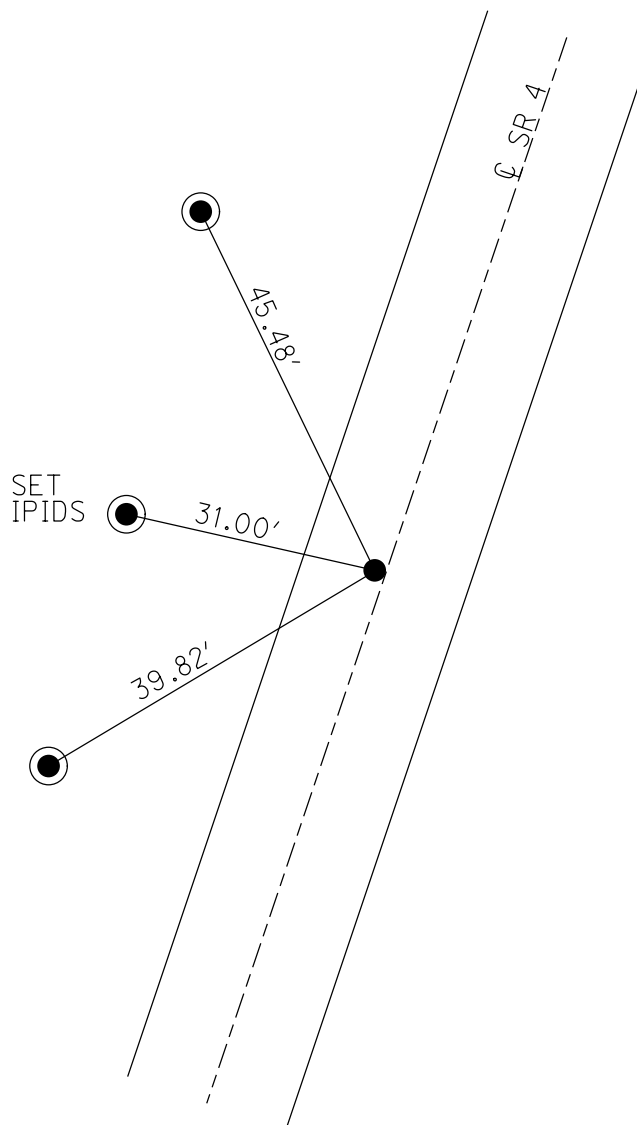
GEOID: 2012A

GRID: NORTHING: 524651.535

EASTING: 1867066.154



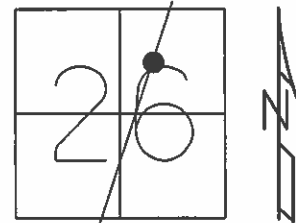
RECORD: P.I.
 STA. 435+94.70
 $\Delta = 00^{\circ}03' \text{ RT}$
 P.K./WASHER
 ATOP R.R.SPIKE
 10/1/85
 SET P.K./WASHER
 7/2/01, BWC
 FD P.K./WASHER
 SV132
 9/16/09, KPM
 FD P.K.SHANK
 1" DOWN
 REFA17
 4/18/19, JFO
 8/19/19, JFO



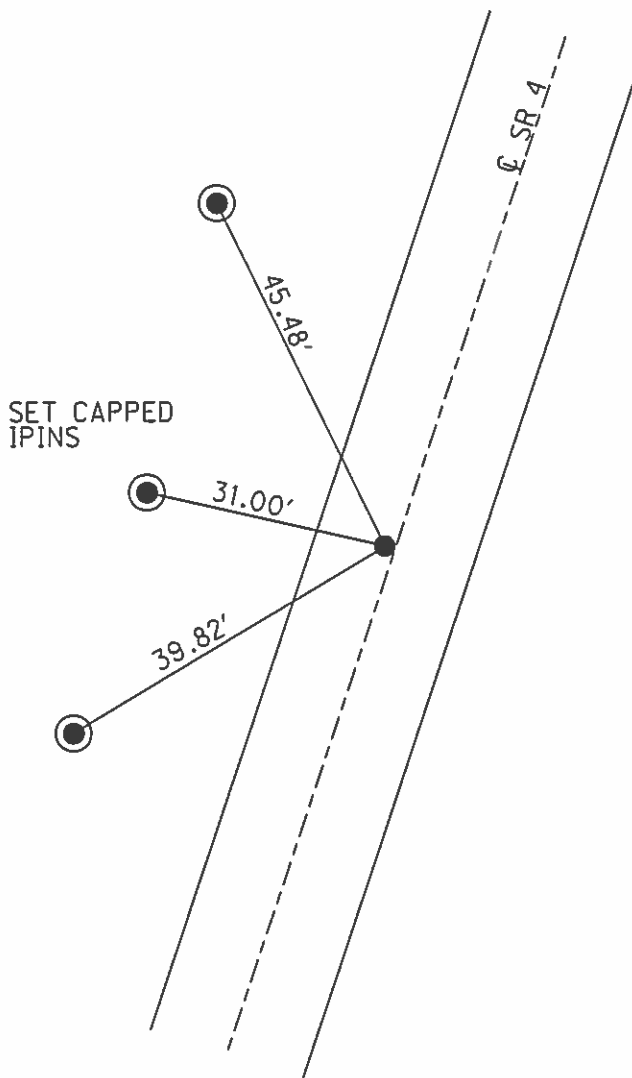
O.D.O.T. DISTRICT 2 SURVEY OFFICE (USE ONLY)

PERSONNEL _____ REFERENCE NO. 17 A SHEET 37 OF 41
 NOTES MOSE DATE 8/13/10 ROUTE SR 4
 H.C. GOLDBERG WEATHER SUNNY COUNTY SENECA
 R.C. FINTEL TEMP. 85° TOWNSHIP REED
 _____ SECTION 26
 _____ T 2 N R 17 E

TYPE MONUMENT P.K./WASHER
 ON SURFACE - ~~BELOW~~ ON
 LEFT - ☉ PAV'T - ~~RIGHT~~ 0.5'
9.8' TO LT EDGE PAVEMENT
 S.L.M. 436+87.57



RECORD: 10/1/1985
 STA. 435+94.70
 P.I. Δ = 00° 03' RT.
 P.K./WASHER
 ATOP R.R.SPK.
 SET P.K./WASHER
 7/2/01 BWC
 FD P.K./WASHER
 SV132 9/16/09 KPM



O.D.O.T. DISTRICT 2 SURVEY OFFICE

PERSONNEL

REFERENCE NO. 17A

SHEET 2 OF 19

NOTES Cordes

H.C. Brown

DATE 5-31-01

ROUTE 4

R.C. Homan

WEATHER Sunny

COUNTY Seneca

TEMP. 62°

TOWNSHIP Reed

SECTION 26

T2 N R17 E

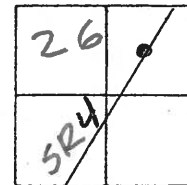
TYPE MONUMENT PK/Washer

ON SURFACE - ~~BELOW~~ on

LEFT - & PAV'T. - ~~RIGHT~~ 0.5'

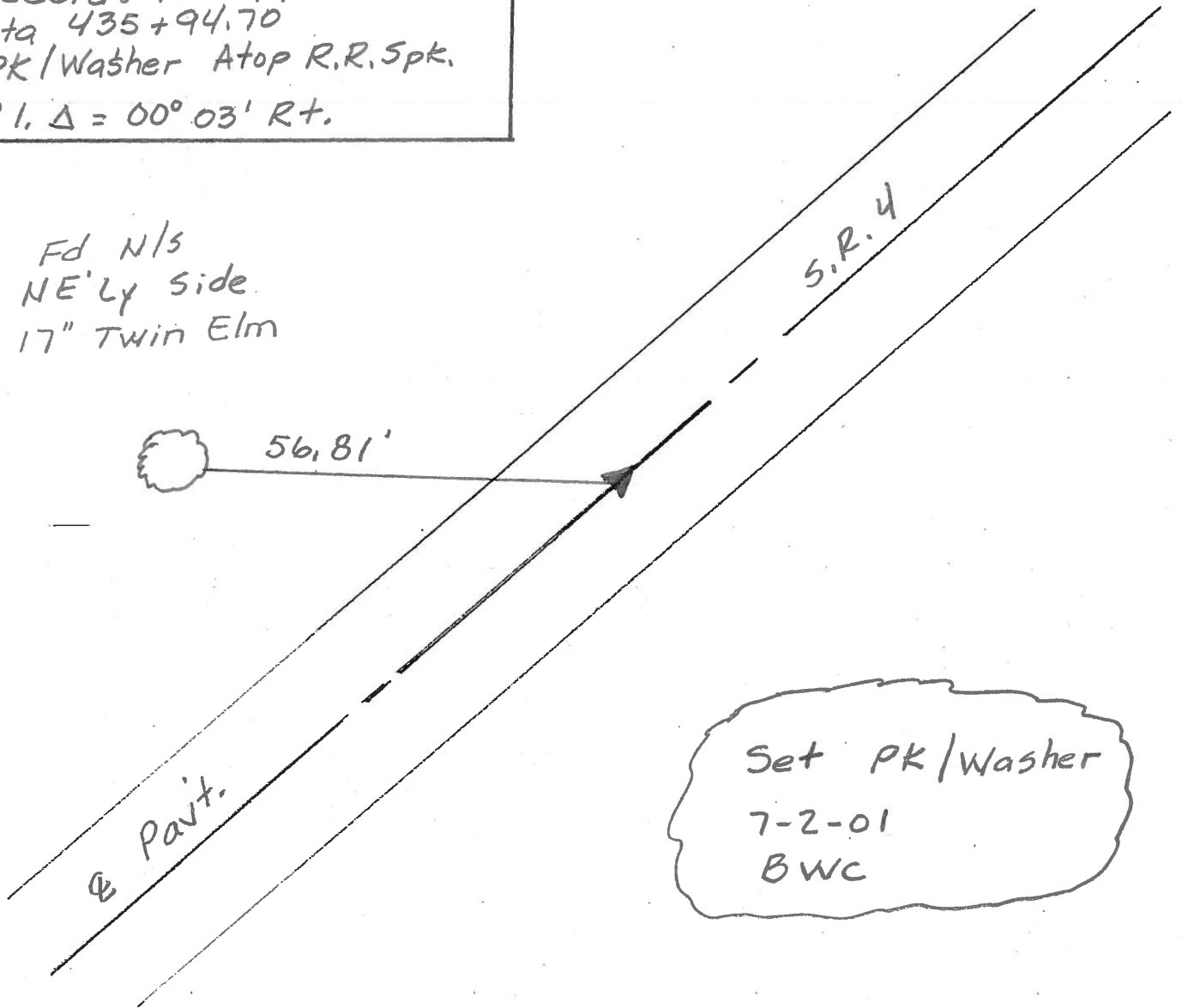
10.5' TO Lt EDGE PAVEMENT

S.L.M. 437+88



Record: 10-1-1985
Sta 435+94.70
PK/Washer Atop R.R. Spk.
P.I. Δ = 00° 03' Rt.

Fd N/3
NE'ly side
17" Twin Elm



O.D.O.T. DISTRICT 2 SURVEY OFFICE

PERSONNEL

REFERENCE NO. 17-A

SHEET 33 OF 50

NOTES CHENEY

H.C. RIPPLE

R.C. BARBOUR

GEYMAN

DATE 10-21-1992

WEATHER CLOUDY

TEMP. 40°

ROUTE #4

COUNTY SENECA

TOWNSHIP FEED

SECTION 26

T2 N R 17 E

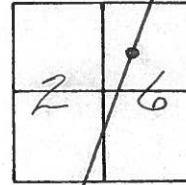
TYPE MONUMENT PK/WASHER

ON SURFACE - ~~BELOW~~ ON

LEFT - 0 PAV'T. - ~~RIGHT~~ 0.5'

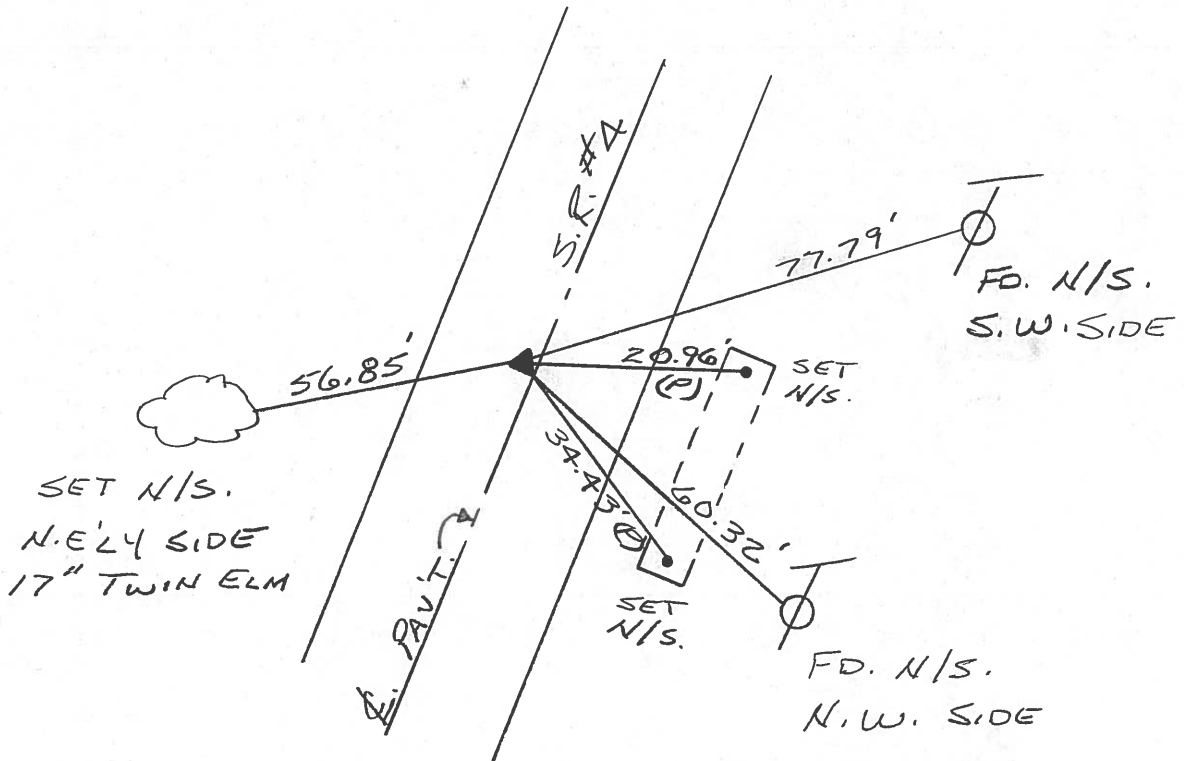
10.5' TO LT. EDGE PAVEMENT

S.L.M. 437+88



RECORD: 10-1-1985
 STA. 435+94.70
 PK/WASHER ATOP R.R. SPK.
 P.I. Δ = 00°03' Rt.

SET PK/WASHER
 10-13-1993
 RCC



O.D.O.T. DISTRICT 2 SURVEY OFFICE

PERSONNEL

NOTES CRONIN
H.C. RIPPLE
R.C. BARBOUR
GEYMAN

REFERENCE NO. _____

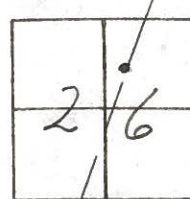
SHEET 8 OF _____

DATE 10/1/85
WEATHER SUNNY-WINDY
TEMP. 49°

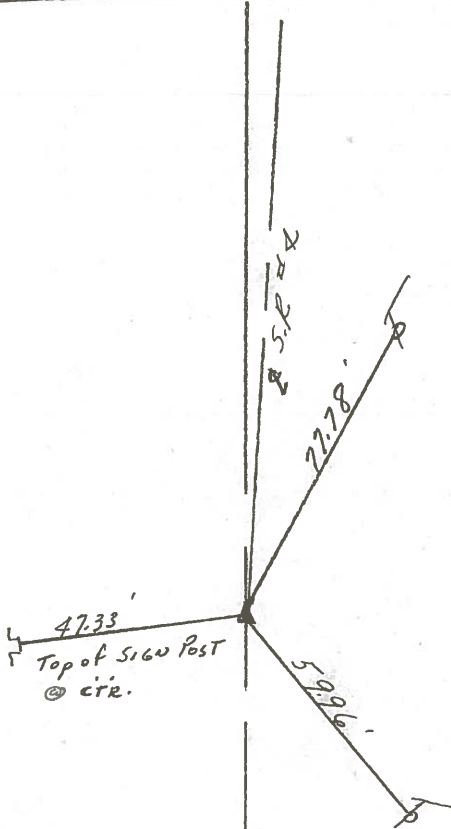
ROUTE #4
COUNTY SENECA
TOWNSHIP REED
SECTION 26
T 2 N R 17 E

TYPE MONUMENT P.K. & WASHER AT TOP RR SPIKE
ON SURFACE - BELOW ON SURFACE
LEFT - & PAV'T. - RIGHT & PAV'T.
TO EDGE PAVEMENT
S.L.M. _____

17A



P.I. Δ = 00°03' Rt.
735 + 94.70



PERSONNEL TITLE PERSONNEL TITLE

COUNTY Seneca DATE 10-2-68

Schneider _____ Potts _____

S. R. 4 WEATHER Cloudy - windy

Mosser _____ _____

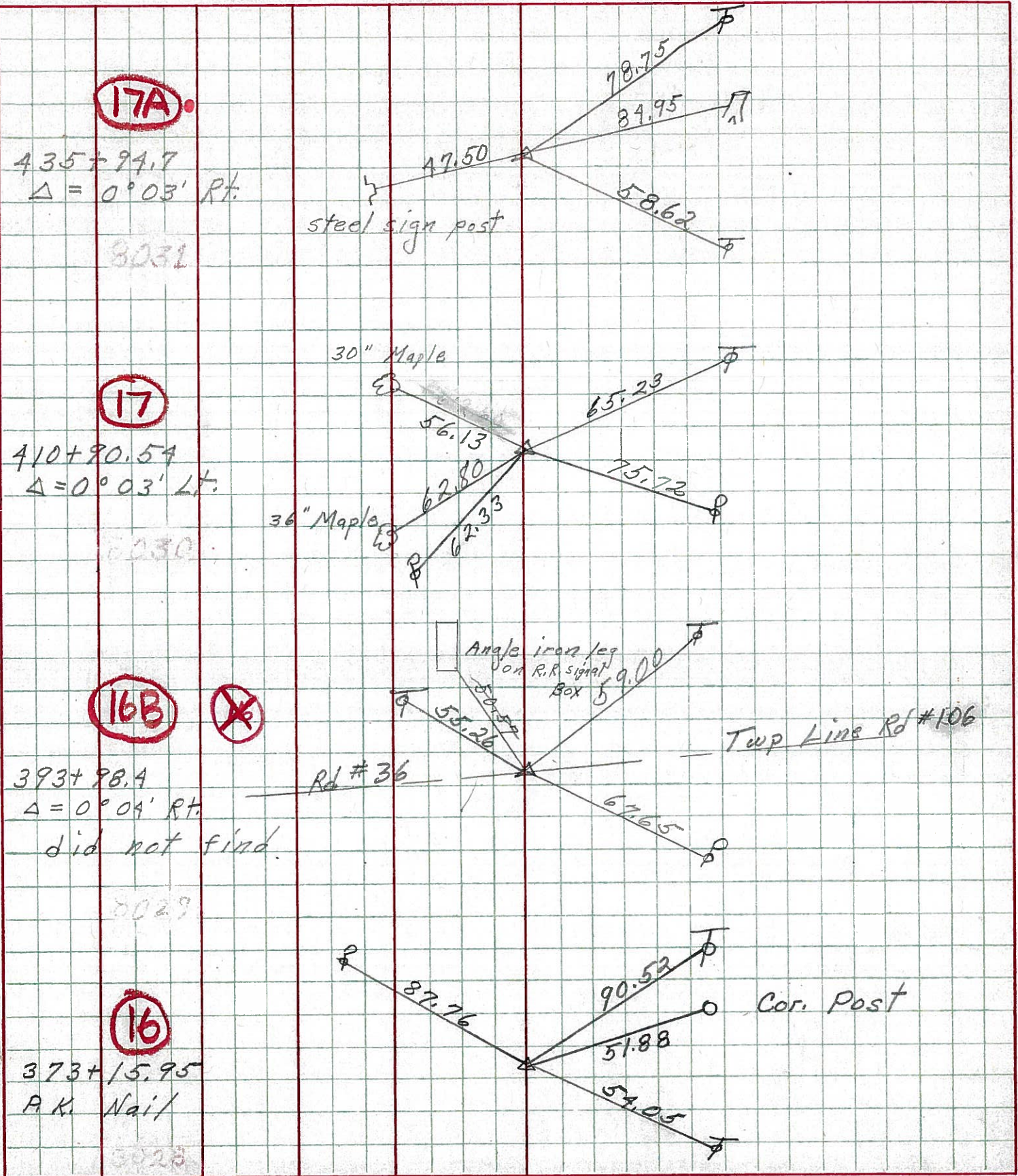
SEC. _____ TEMP. 65°

Barbour _____ _____

Redding _____ _____

DESCRIPTION Ties for control Points JOB NO. _____

LEFT CENTER LINE RIGHT

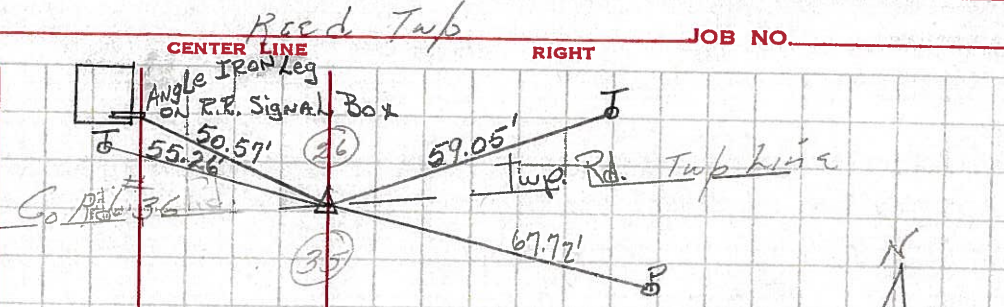


PERSONNEL TITLE PERSONNEL TITLE COUNTY Seneca DATE
 Kowaleski _____
 Krabill _____
 Brooks _____
 S. R. 4 WEATHER _____
 SEC. _____ TEMP. _____

DESCRIPTION LEFT CENTER LINE RIGHT JOB NO.

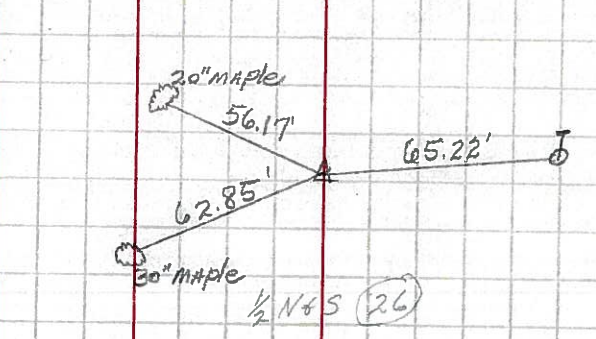
393 ± 98.4 #254
 P.K. NAIL 1-21-64
 P.I. Δ = 0°-04' RT.

16B



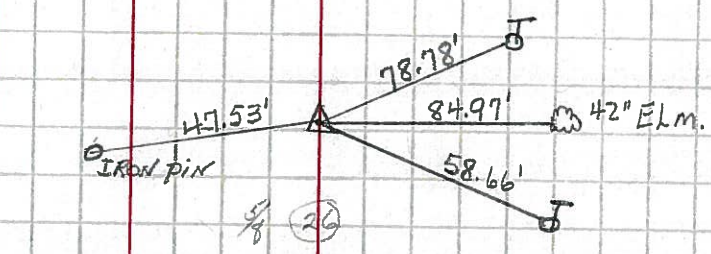
410 ± 90.54 #255
 P.I. Δ = 0°-03' LT.
 P.K. NAIL 1-21-64

17



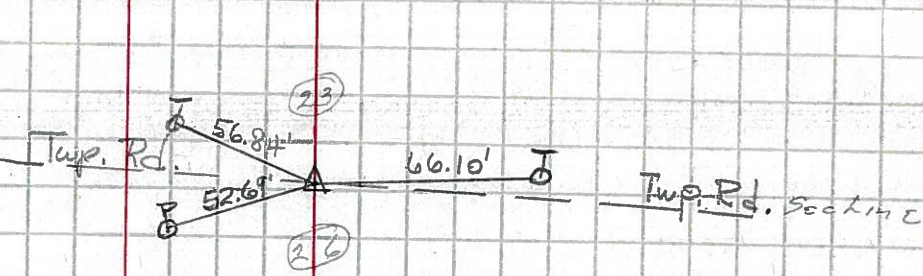
435 ± 94.7 #256
 P.I. Δ = 0°-03' RT.
 P.K. NAIL 1-21-64

17A



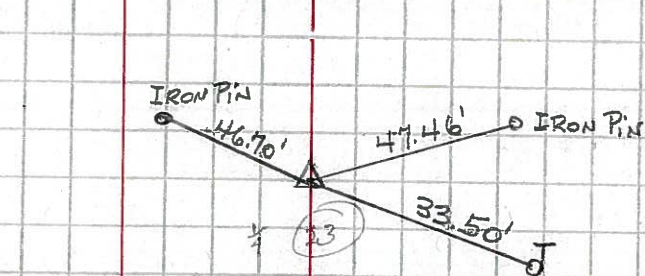
450 ± 02.80 #257
 P.I. Δ = 0°-10'-30" LT.
 P.K. NAIL 1-21-64

18



466 ± 97.65 257-A
 P.I. Δ = 0°-11'-30" Lt.
 P.K. NAIL 1-21-64

18A



ALL MEASUREMENTS FOR THIS POINT ONLY ARE PLUMBED.