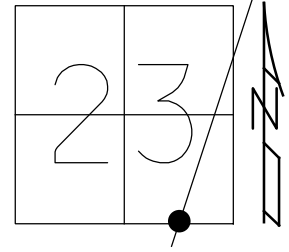


O.D.O.T. DISTRICT 2 SURVEY OFFICE (USE ONLY)

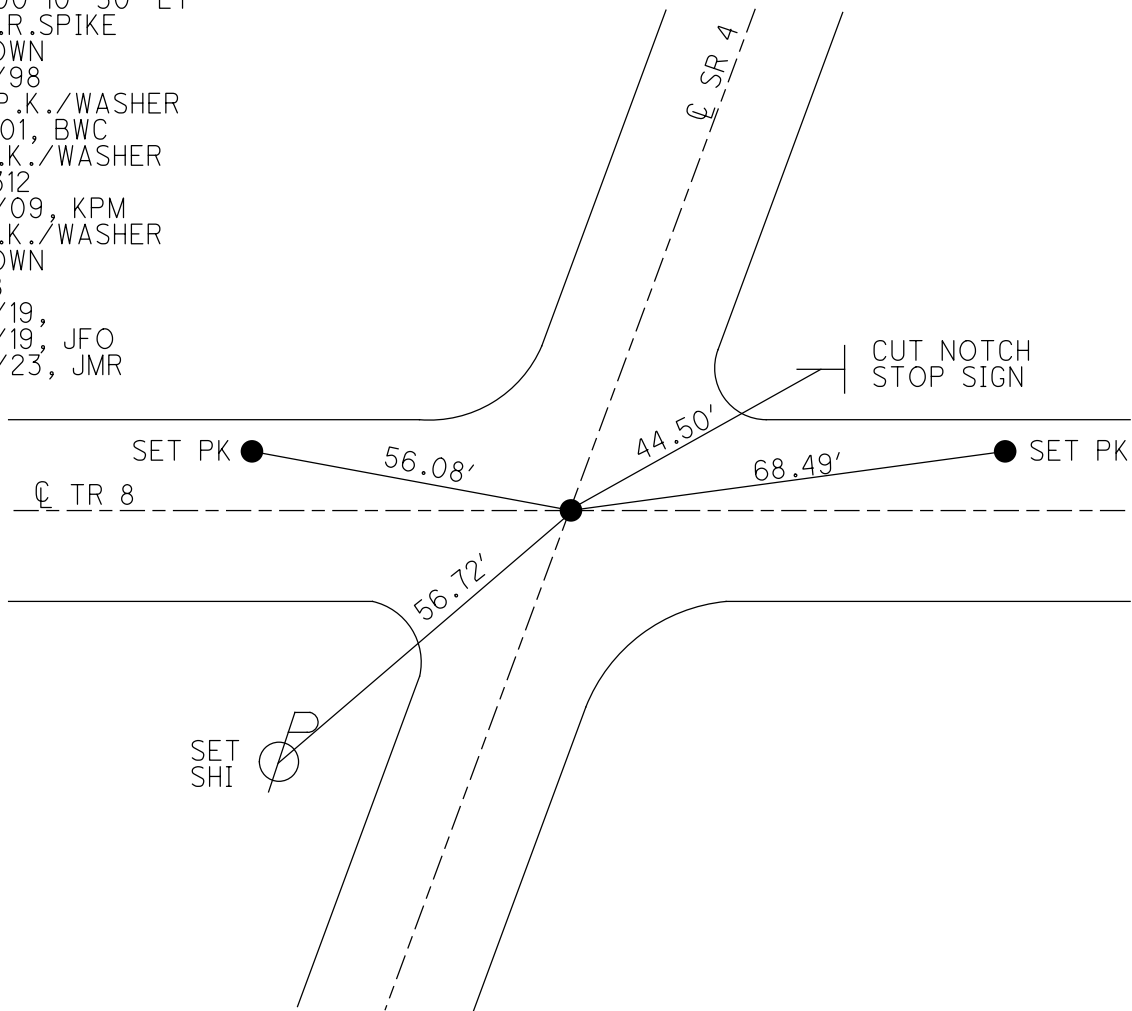
PERSONNEL _____ REFERENCE NO. 18 SHEET 38 OF 56
 NOTES MOSER DATE 8/13/10 ROUTE SR 4
 H.C. GOLDBERG WEATHER SUNNY COUNTY SENECA
 R.C. FINTEL TEMP. 85° TOWNSHIP REED
 DWG BY NASON PID PAVETRAIN SECTION 23
 T 2 N R 17 E

TYPE MONUMENT P.K./WASHER
~~ON SURFACE~~ - BELOW 2"
 OFFSET \varnothing PAVEMENT ON LT : RT
10' TO RT EDGE PAVEMENT
 STATION: 450+93.87



HORIZ.DATUM: NAD83 2011 GEOID: 2012A
 GRID: NORTHING: 525974.372 EASTING: 1867543.385

RECORD: P.I.
 STA. 450+02.80
 $\Delta = 00^{\circ}10' 30''$ LT
 FD R.R.SPIKE
 2" DOWN
 5/21/98
 SET P.K./WASHER
 7/2/01, BWC
 FD P.K./WASHER
 SV13312
 9/16/09, KPM
 FD P.K./WASHER
 2" DOWN
 REF18
 4/18/19,
 8/19/19, JFO
 1/20/23, JMR

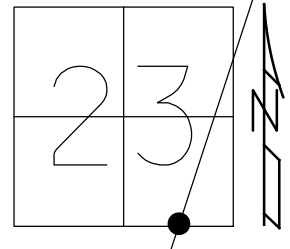


O.D.O.T. DISTRICT 2 SURVEY OFFICE (USE ONLY)

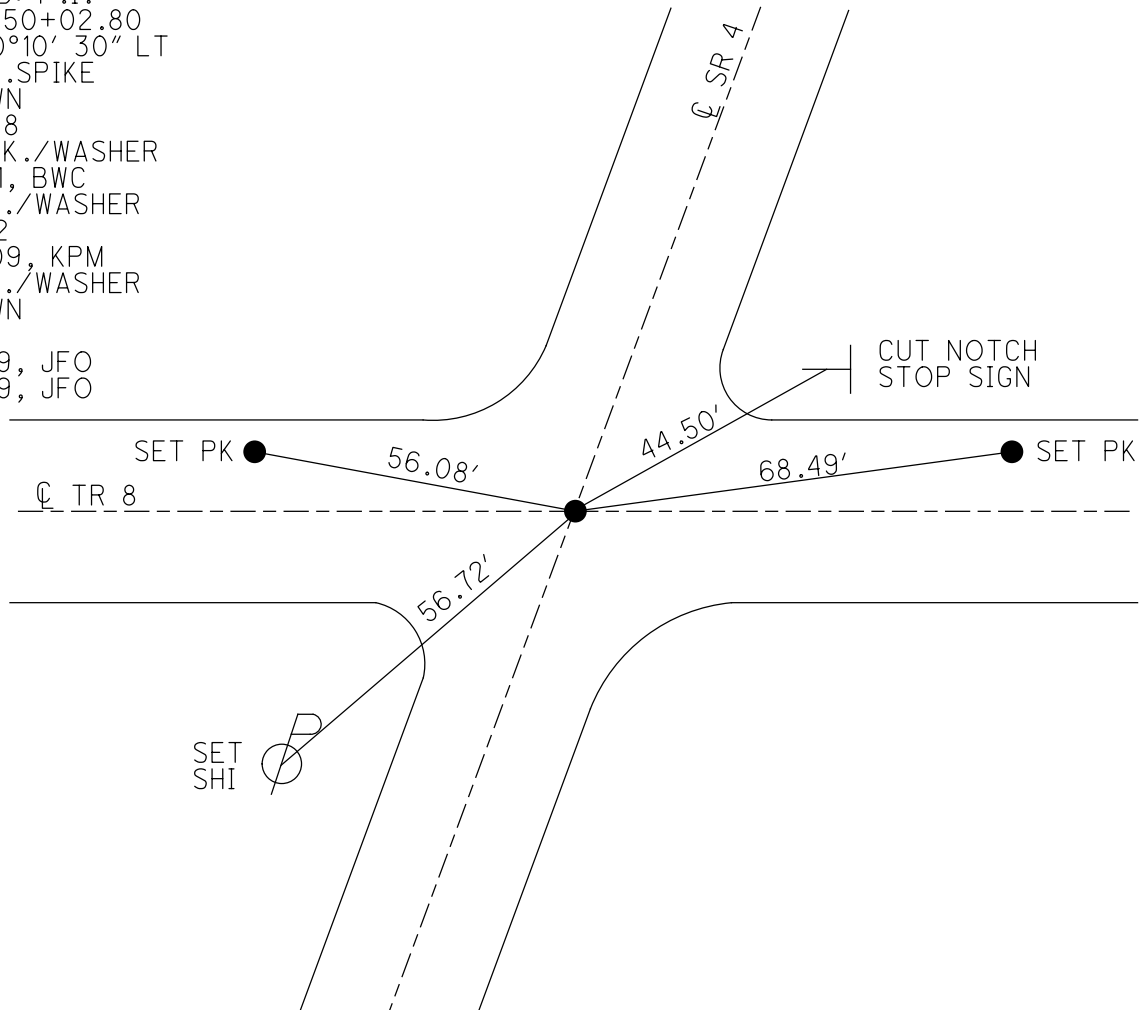
PERSONNEL _____ REFERENCE NO. 18 SHEET 38 OF 41
 NOTES MOSER DATE 8/13/10 ROUTE SR 4
 H.C. GOLDBERG WEATHER SUNNY COUNTY SENECA
 R.C. FINTEL TEMP. 85° TOWNSHIP REED
 DWG BY NASON PID 107060 SECTION 23
 T 2 N R 17 E

TYPE MONUMENT P.K./WASHER
 ON SURFACE - ~~BELOW~~ ON
 OFFSET Q PAVEMENT ON LT : RT
10' TO RT EDGE PAVEMENT
 STATION: 450+93.87

HORIZ.DATUM: NAD83 2011 GEOID: 2012A
 GRID: NORTHING: 525974.372 EASTING: 1867543.385



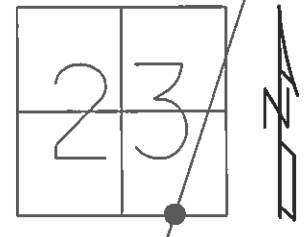
RECORD: P.I.
 STA. 450+02.80
 $\Delta = 00^{\circ}10' 30''$ LT
 FD R.R.SPIKE
 2" DOWN
 5/21/98
 SET P.K./WASHER
 7/2/01, BWC
 FD P.K./WASHER
 SV13312
 9/16/09, KPM
 FD P.K./WASHER
 2" DOWN
 REF18
 4/18/19, JFO
 8/19/19, JFO



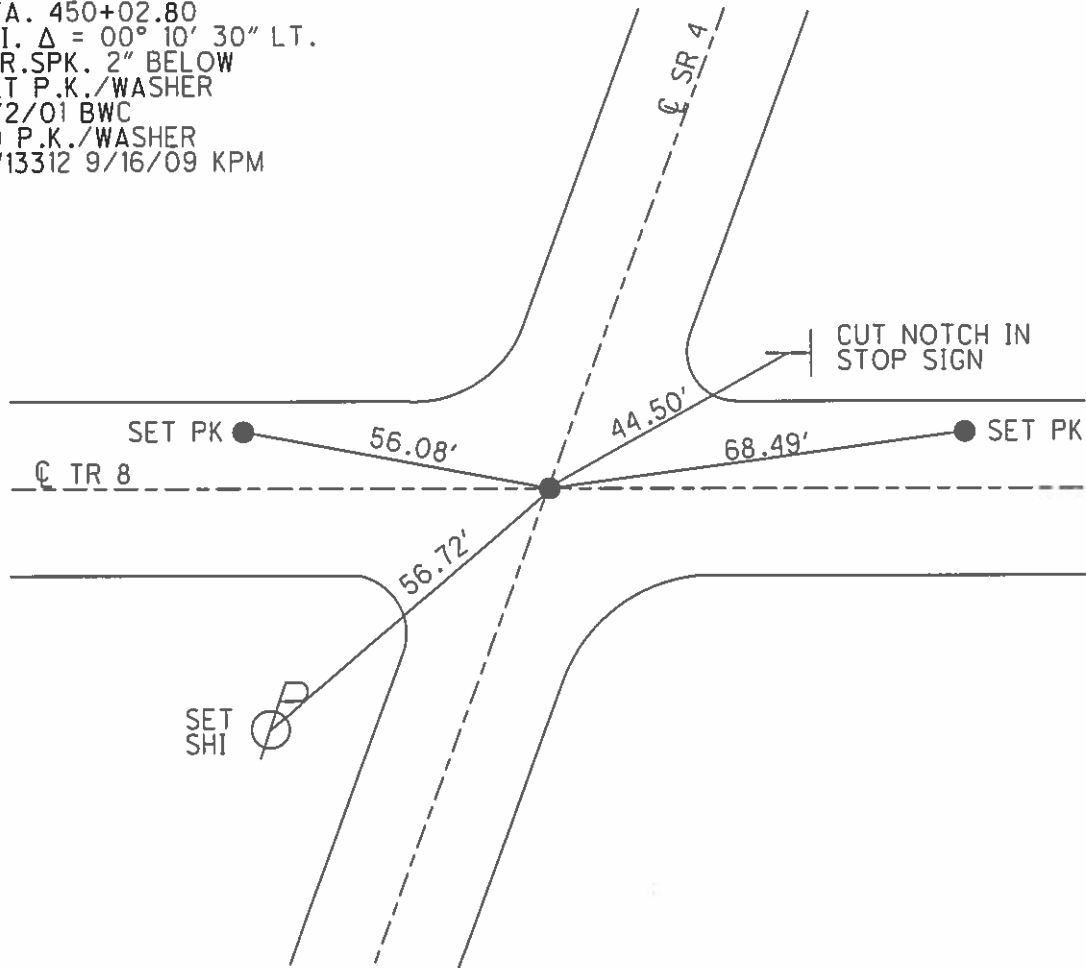
O.D.O.T. DISTRICT 2 SURVEY OFFICE (USE ONLY)

PERSONNEL _____ REFERENCE NO. 18 SHEET 38 OF 41
 NOTES MOSER DATE 8/13/10 ROUTE SR 4
 H.C. GOLDBERG WEATHER SUNNY COUNTY SENECA
 R.C. FINTEL TEMP. 85° TOWNSHIP REED
 _____ SECTION 23
 _____ T 2 N R 17 E

TYPE MONUMENT P.K./WASHER
 ON SURFACE - ~~BELOW~~ ON
 LEFT - ☉ PAV'T - RIGHT ON
10' TO RT EDGE PAVEMENT
 S.L.M. 450+93.87
 GRID: NORTHING: 528210.0525 EASTING: 1868351.8629



RECORD: 5/21/1998
 STA. 450+02.80
 P.I. Δ = 00° 10' 30" LT.
 R.R.SPK. 2" BELOW
 SET P.K./WASHER
 7/2/01 BWC
 FD P.K./WASHER
 SV13312 9/16/09 KPM



O.D.O.T. DISTRICT 2 SURVEY OFFICE

PERSONNEL

REFERENCE NO. 18

SHEET 3 OF 519

NOTES Cordes

H.C. Brown

R.C. Homan

DATE 5-30-01

WEATHER Sunny

TEMP. 75° 60°

ROUTE 4

COUNTY Seneca

TOWNSHIP Reed

SECTION 23

T 2 N R 17 E

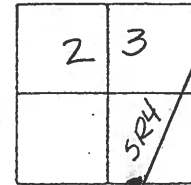
TYPE MONUMENT PK/Washer

ON SURFACE - ~~BELOW~~ On

~~LEFT~~ - & PAV'T. - ~~RIGHT~~ On

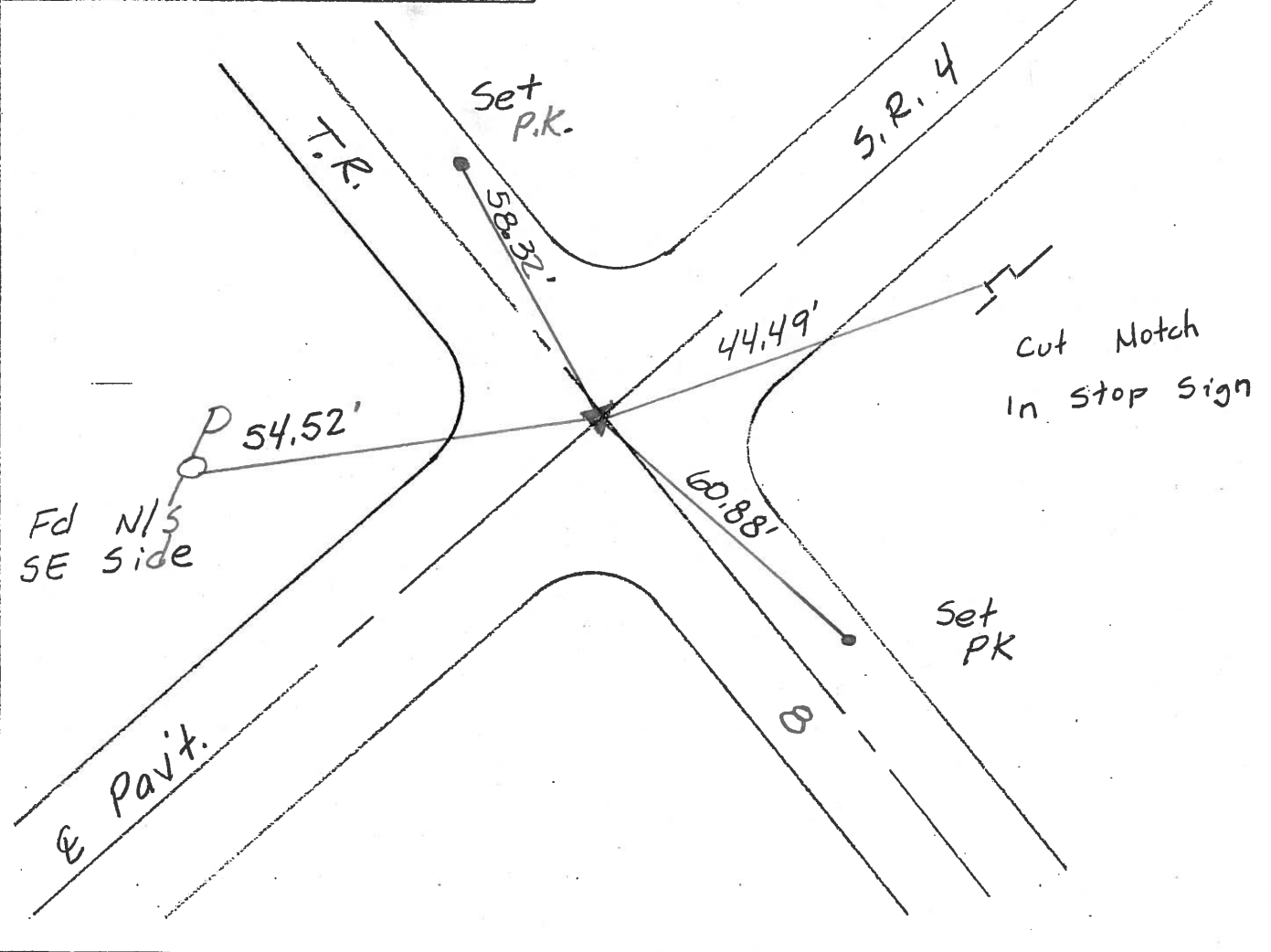
TO EDGE PAVEMENT

S.L.M. 452+12



Record: 5-21-1998
 Sta 450+02.80
 RR Spk 2" Below
 P. I. Δ = 00° 10' 30" Lt.

Set PK/Washer
 7-2-01 BWC



O.D.O.T. DISTRICT 2 SURVEY OFFICE

PERSONNEL

REFERENCE NO. 18

SHEET 34 OF 50

NOTES CHENEY

H.C. RIPPLE

DATE 10-21-1992

ROUTE #4

R.C. BARBOUR

WEATHER Cloudy

COUNTY SENECA

GEYMAN

TEMP. 40°

TOWNSHIP REED

SECTION 23

T2N R17E

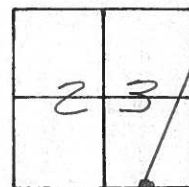
TYPE MONUMENT R.R. SPIKE

~~ON~~ SURFACE - BELOW 2" BELOW

~~LEFT - & PAV'T. - RIGHT ON~~

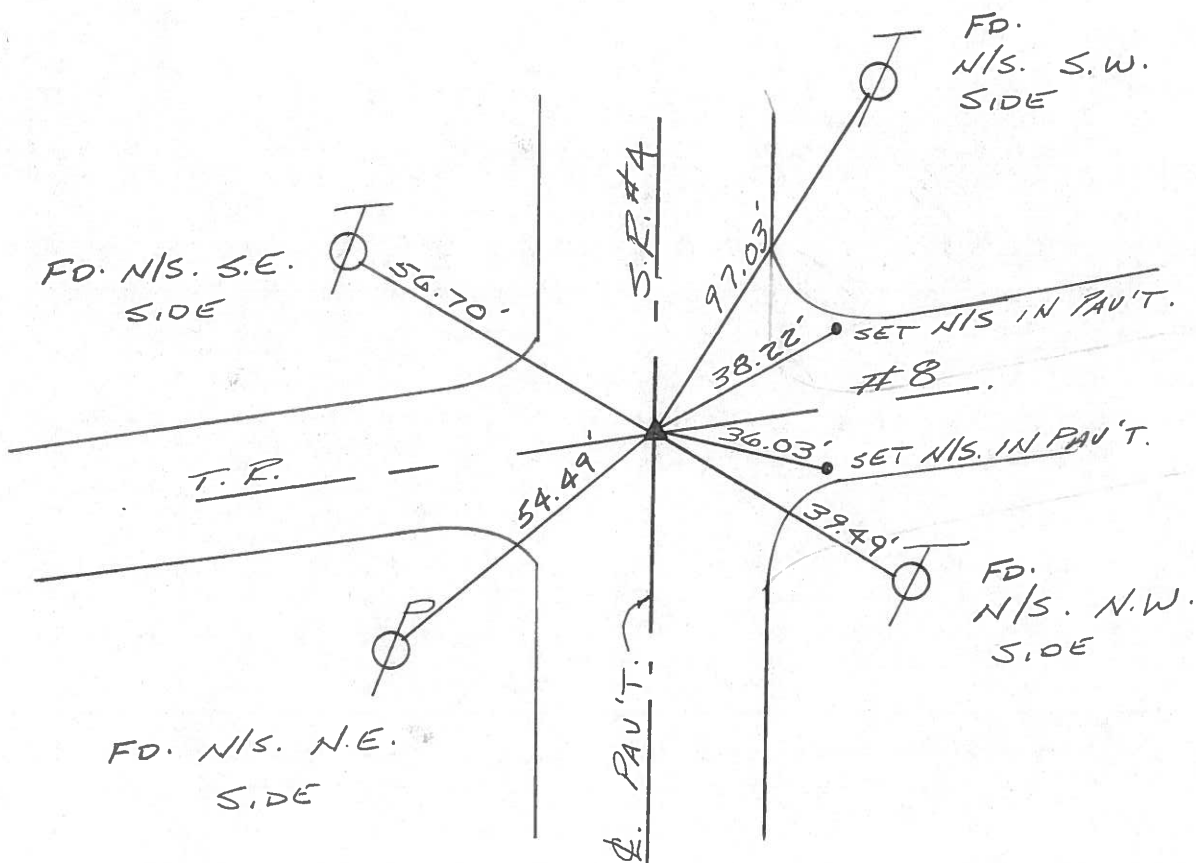
~~- TO -~~ EDGE PAVEMENT

S.L.M. 452+12



RECORD: 5-21-1987
 STA. 450+02.80
 R.R. SPR. 2" BELOW
 P.I. Δ = 00°10'30" LT.

SET PK/WASHER
 10-13-1993
 RCC



O.D.O.T. DISTRICT 2 SURVEY OFFICE

PERSONNEL

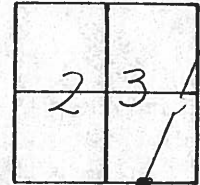
NOTES Cronin
 H.C. Ripple
 R.C. Barbour
Geyman

REFERENCE NO. 18
 DRAWN 12/09/87
 DATE 5/21/87
 WEATHER cloudy
 TEMP. 75°

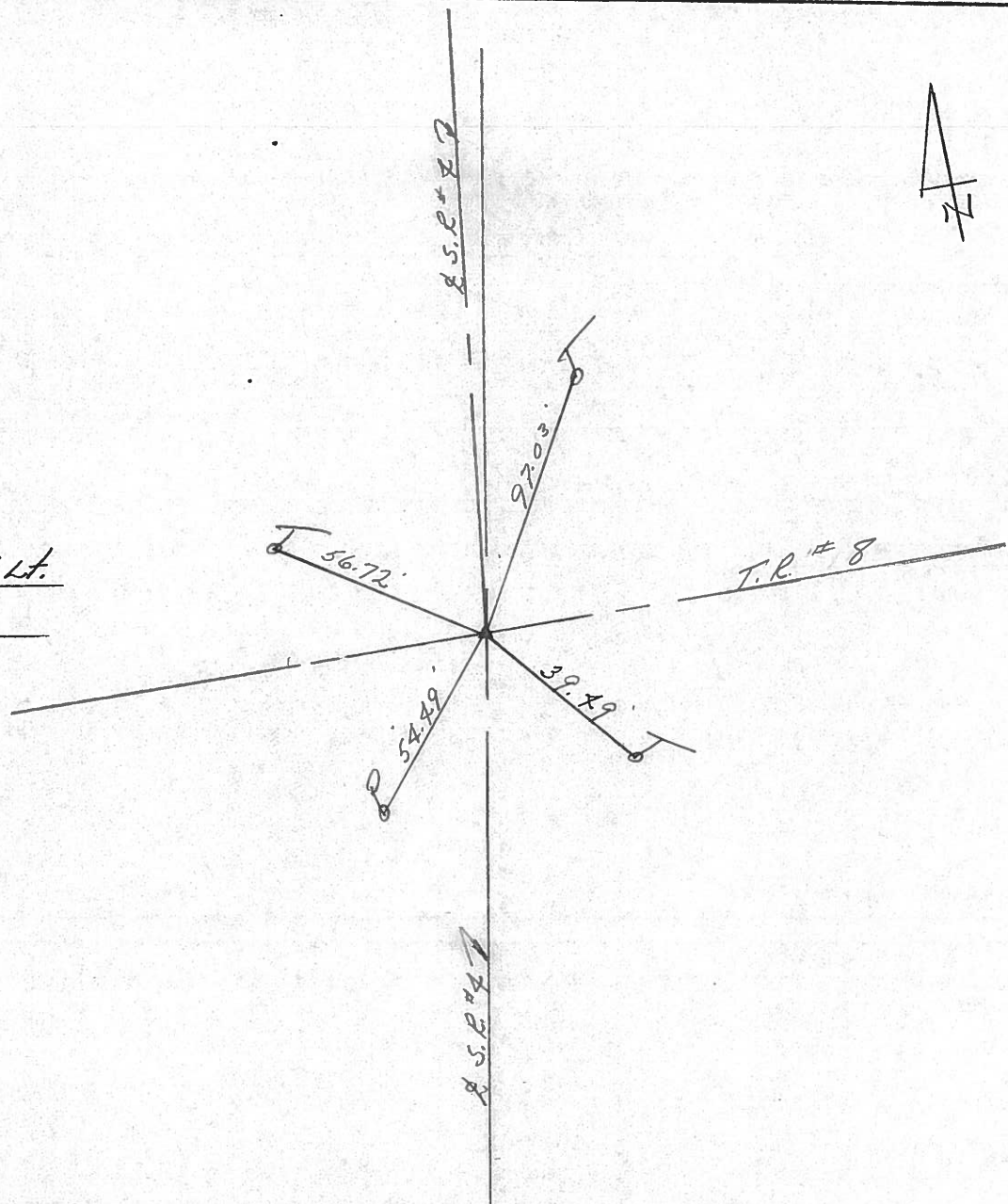
SHEET 9 OF

ROUTE S.R. # 4
 COUNTY Seneca
 TOWNSHIP Reed
 SECTION 23
T 2 N R 17 E

TYPE MONUMENT R.L. spike
 ON SURFACE - BELOW 2" below
 LEFT- <math>\text{C}</math> PAV'T. - RIGHT <math>\text{E}</math>
 TO EDGE PAVEMENT
 S.L.M.



PI $\Delta = 00^{\circ}10'30''$ Lt.
450 + 02.80



PERSONNEL TITLE PERSONNEL TITLE

Schneider

Potts

COUNTY Seneca

DATE 10-2-68

Mosser

S. R. 4

WEATHER Cloudy-Windy

Barbour

SEC.

TEMP. 75°

Redding

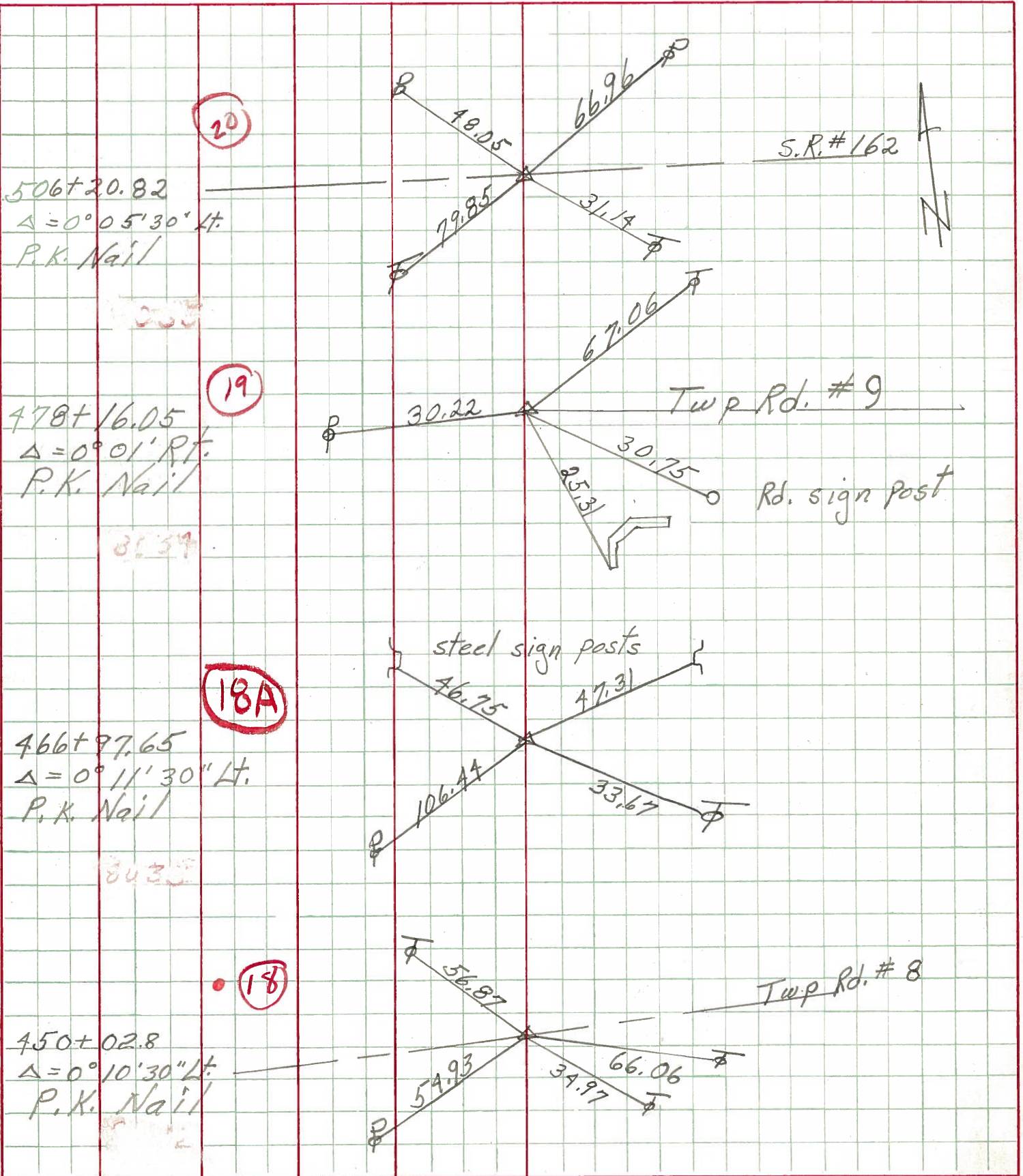
DESCRIPTION Ties for Control Points

JOB NO.

LEFT

CENTER LINE

RIGHT



PERSONNEL TITLE PERSONNEL TITLE

Schneider

Potts

COUNTY Seneca

DATE 10-2-68

Masser

S. R. 4

WEATHER cloudy-Windy

Barbour

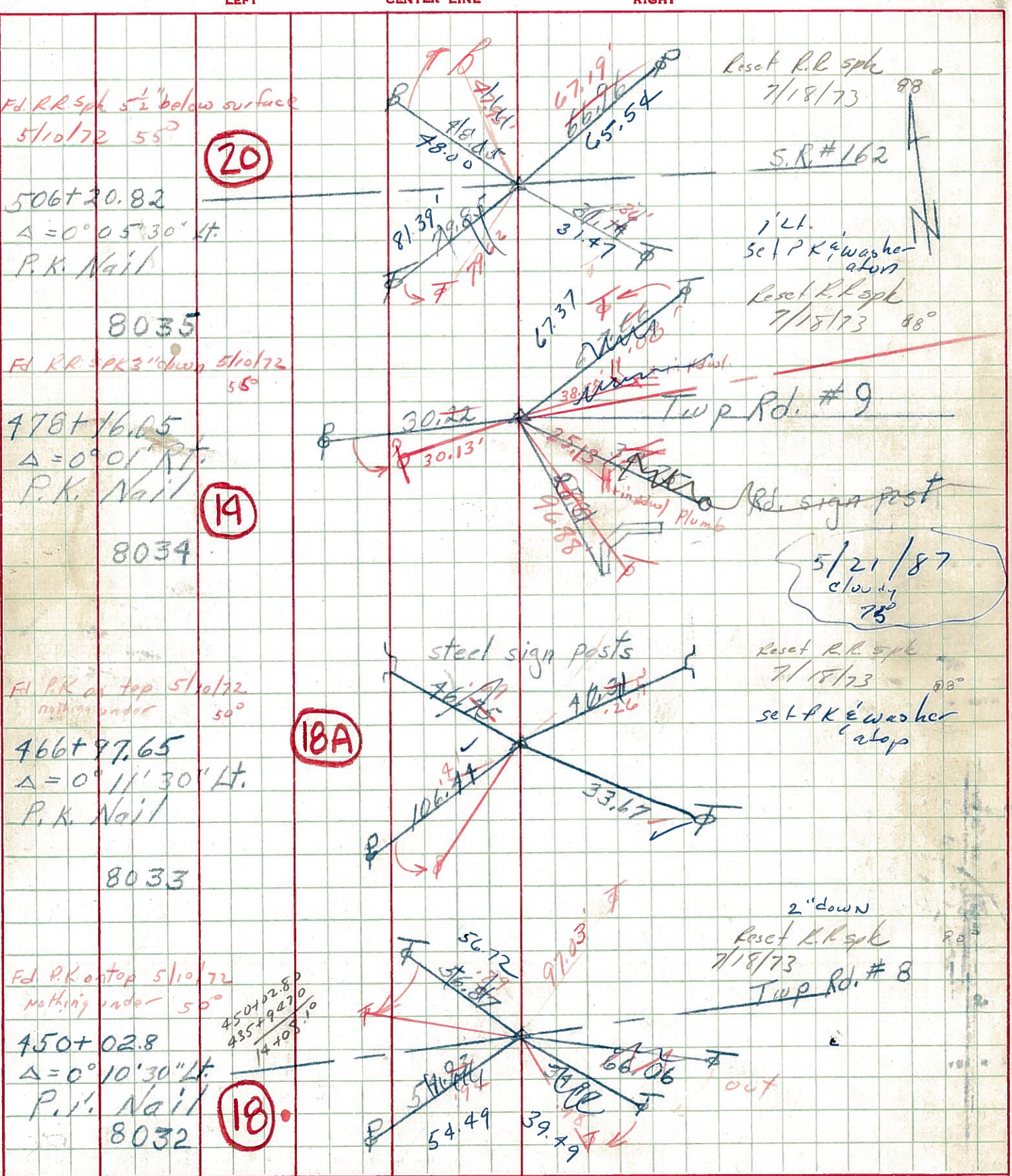
SEC.

TEMP. 75°

Redding

DESCRIPTION Ties for Control Points

JOB NO.

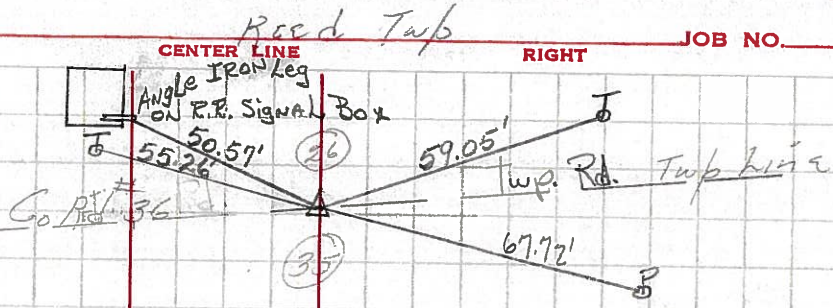


PERSONNEL TITLE PERSONNEL TITLE COUNTY Seneca DATE
 Kowaleski _____
 Krabill _____
 Brooks _____
 S. R. 4 WEATHER _____
 SEC. _____ TEMP. _____

DESCRIPTION LEFT CENTER LINE RIGHT JOB NO.

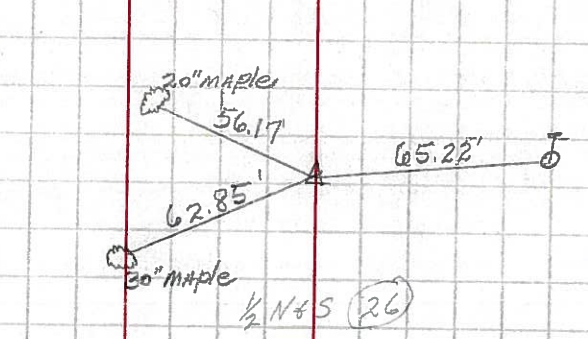
393+98.4 #254
 P.K. Nail 1-21-64
 P.I. Δ = 0°-04' Rt.

16B



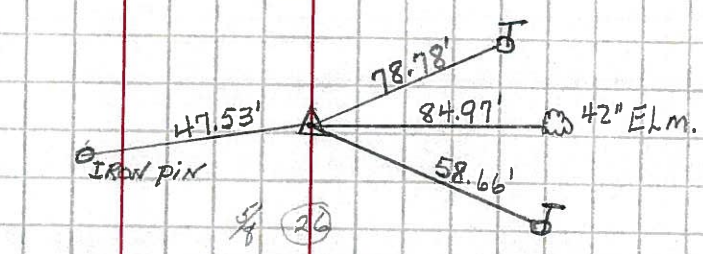
410+90.54 #255
 P.I. Δ = 0°-03' Lt.
 P.K. Nail 1-21-64

17



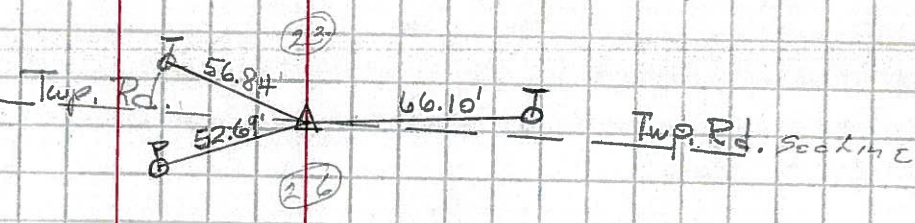
435+94.7 #256
 P.I. Δ = 0°-03' Rt.
 P.K. Nail 1-21-64

17A



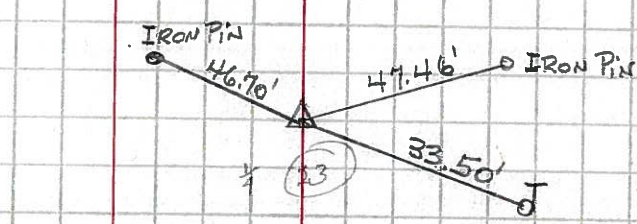
450+02.80 #257
 P.I. Δ = 0°-10'-30" Lt.
 P.K. Nail 1-21-64

18



466+97.65 257-A
 P.I. Δ = 0°-11'-30" Lt.
 P.K. Nail 1-21-64

18A



ALL MEASUREMENTS FOR THIS POINT ONLY ARE PLUMBED.