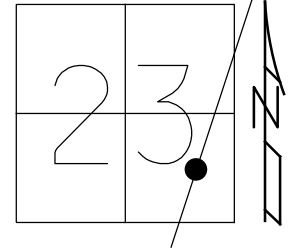


O.D.O.T. DISTRICT 2 SURVEY OFFICE (USE ONLY)

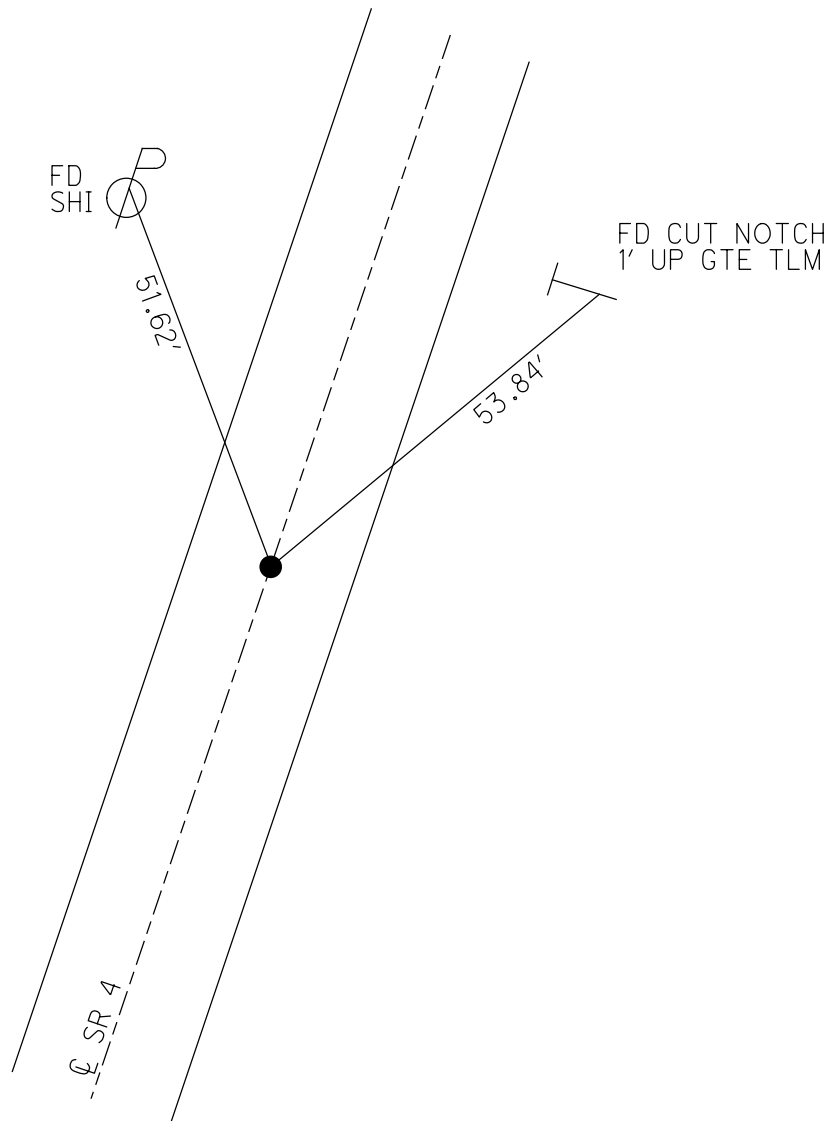
PERSONNEL _____ REFERENCE NO. 18 A SHEET 39 OF 56
 NOTES MOSER DATE 8/13/10 ROUTE SR 4
 H.C. GOLDBERG WEATHER SUNNY COUNTY SENECA
 R.C. FINTEL TEMP. 85° TOWNSHIP REED
 _____ SECTION 23
 DWG BY NASON PID PAVETRAIN T 2 N R 17 E

TYPE MONUMENT MAG NAIL
 ON SURFACE - ~~BELOW~~ ON
 OFFSET ☉ PAVEMENT ON LT : RT
10.5' TO RT EDGE PAVEMENT
 STATION: 467+87.61



HORIZ.DATUM: NAD83 2011 GEOID: 2012A
 GRID: NORTHING: 527569.451 EASTING: 1868112.755

RECORD: P.I.
 STA. 466+97.65
 $\Delta = 00^{\circ}11' 30''$ LT
 FD P.K./WASHER
 ATOP R.R.SPIKE
 5/21/87
 SET MAG NAIL
 7/2/01, BWC
 FD MAG NAIL
 SV13412
 9/16/09, KPM
 FD P.K./WASHER
 REFA18
 4/18/19, JFO
 8/19/19, JFO
 1/20/23, JMR



O.D.O.T. DISTRICT 2 SURVEY OFFICE (USE ONLY)

PERSONNEL

REFERENCE NO. 18 A

SHEET 39 OF 41

NOTES MOSER
 H.C. GOLDBERG
 R.C. FINTEL

DATE 8/13/10
 WEATHER SUNNY
 TEMP. 85°

ROUTE SR 4
 COUNTY SENECA
 TOWNSHIP REED
 SECTION 23
 T 2 N R 17 E

DWG BY NASON PID 107060

TYPE MONUMENT MAG NAIL

ON SURFACE - ~~BELOW~~ ON

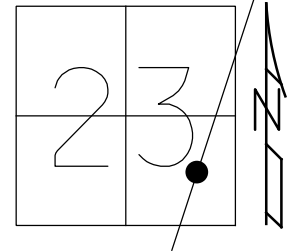
OFFSET \varnothing PAVEMENT ON LT : RT

10.5' TO RT EDGE PAVEMENT

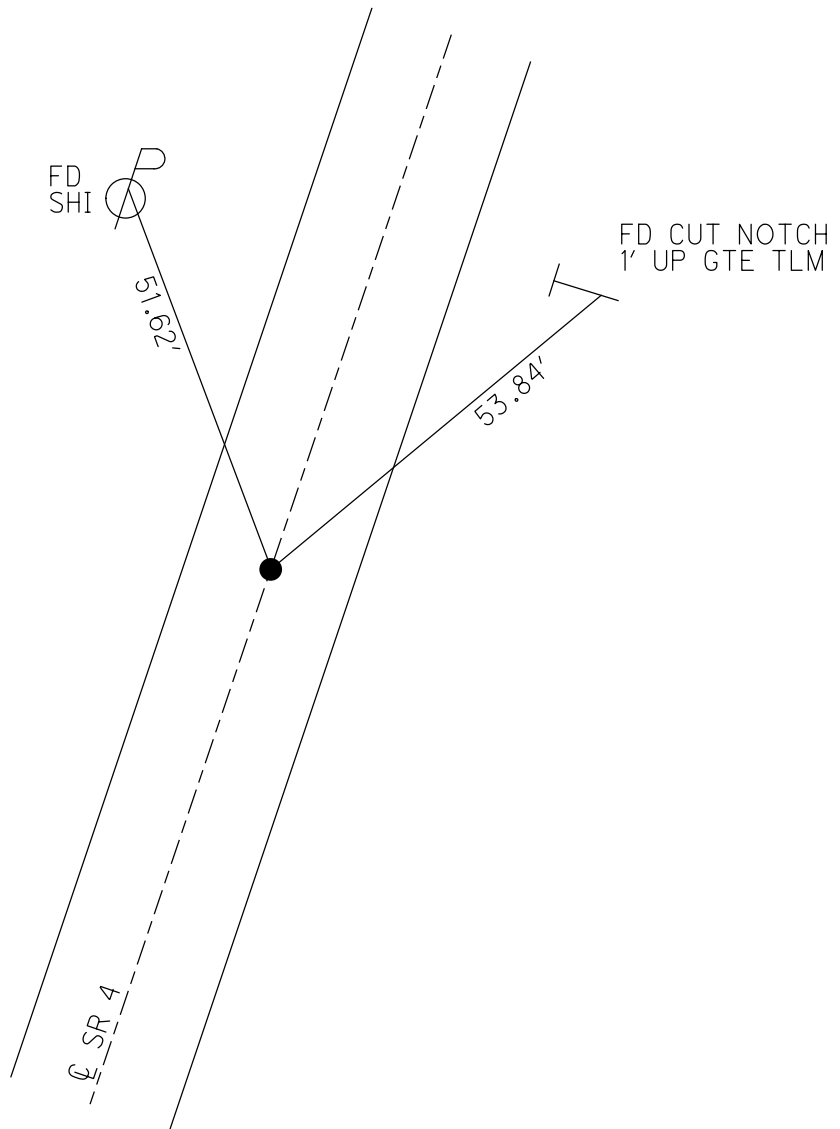
STATION: 467+87.61

HORIZ.DATUM: NAD83 2011 GEOID: 2012A

GRID: NORTHING: 527569.451 EASTING: 1868112.755



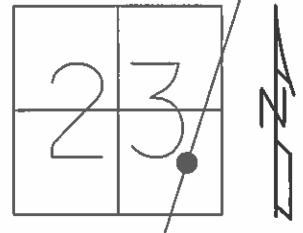
RECORD: P.I.
 STA. 466+97.65
 $\Delta = 00^{\circ}11' 30''$ LT
 FD P.K./WASHER
 ATOP R.R.SPIKE
 5/21/87
 SET MAG NAIL
 7/2/01, BWC
 FD MAG NAIL
 SV13412
 9/16/09, KPM
 FD P.K./WASHER
 REFA18
 4/18/19, JFO
 8/19/19, JFO



O.D.O.T. DISTRICT 2 SURVEY OFFICE (USE ONLY)

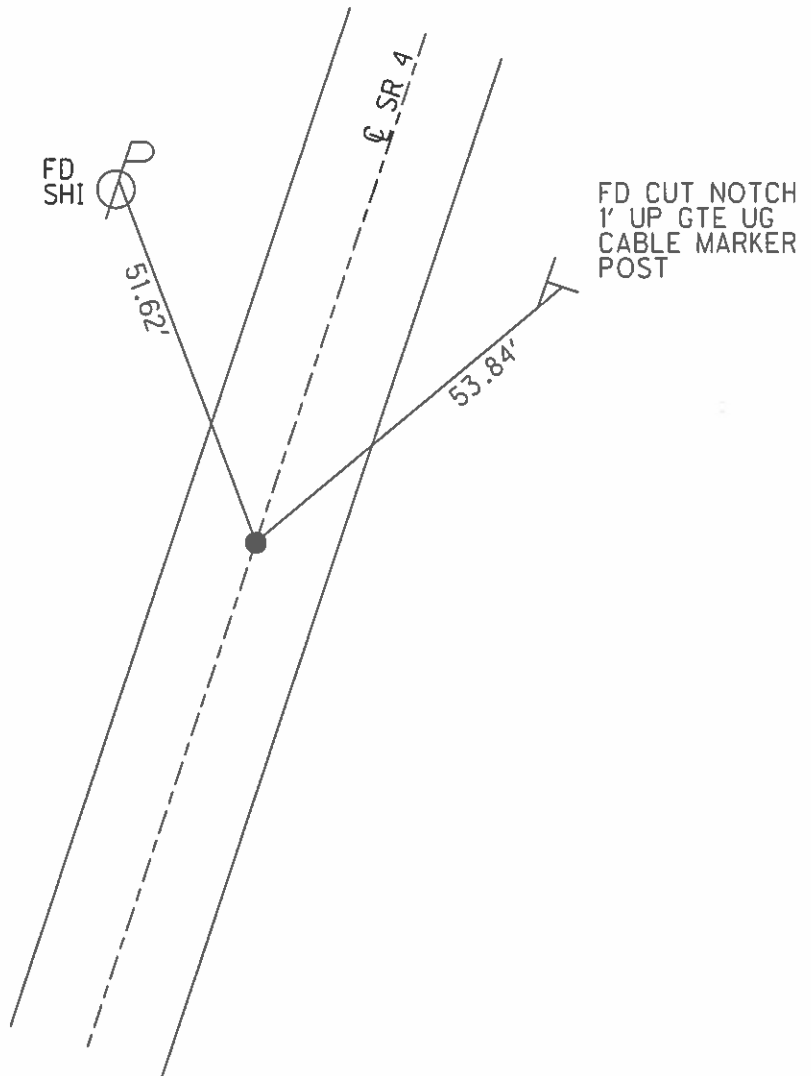
PERSONNEL _____ REFERENCE NO. 18 A SHEET 39 OF 41
 NOTES MOSER DATE 8/13/10 ROUTE SR 4
 H.C. GOLDBERG WEATHER SUNNY COUNTY SENECA
 R.C. FINTEL TEMP. 85° TOWNSHIP REED
 _____ SECTION 23
 _____ T 2 N R 17 E

TYPE MONUMENT MAG NAIL
 ON SURFACE - ~~BELOW~~ ON
 LEFT - ☉ PAV'T - RIGHT ON
10.5' TO RT EDGE PAVEMENT
 S.L.M. 467+87.61



GRID: NORTHING: 528218.5409 EASTING: 529454.4572

RECORD: 5/21/1987
 STA. 466+97.65
 P.I. Δ = 00° 11' 30" LT.
 P.K./WASHER
 ATOP R.R.SPK.
 SET MAG NAIL
 7/2/01 BWC
 FD MAG NAIL
 SV 13412 9/16/09 KPM



O.D.O.T. DISTRICT 2 SURVEY OFFICE

PERSONNEL

REFERENCE NO. 18-A

SHEET 4 OF 19

NOTES Cordes

H.C. Brown

DATE 5-31-01

ROUTE 4

R.C. Homan

WEATHER Sunny

COUNTY Seneca

TEMP. 62°

TOWNSHIP Reed

SECTION 23

T2 N R 17 E

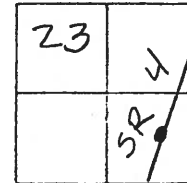
TYPE MONUMENT Mag Nail / Washer

ON SURFACE - ~~BELOW~~ On

~~LEFT - & PAV'T. - RIGHT~~ On

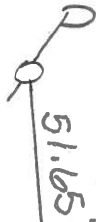
11' TO R+ EDGE PAVEMENT

S.L.M. 469+11



Record: 5-21-1987
 Sta 466+97.65
 PK/Washer Atop RR Spk.
 P.I. $\Delta = 00^{\circ} 11' 30''$ Lt

Set
N/S



53.58'

Fd Cut Notch
 1' up G.T.E. U.-G.
 Cable Marker
 Post

Set Mag Nail
 7-2-01 BWC

O.D.O.T. DISTRICT 2 SURVEY OFFICE

PERSONNEL

REFERENCE NO. 18-A

SHEET 35 OF 50

NOTES CHENEY

H.C. RIPPLE

R.C. BARIBOUR

GEYMAN

DATE 10-21-1992

WEATHER CLOUDY

TEMP. 40°

ROUTE #4

COUNTY SENECA

TOWNSHIP FEED

SECTION 23

TEN R I A E

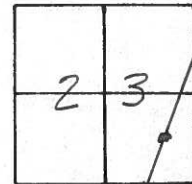
TYPE MONUMENT PK/WASHER

ON SURFACE - ~~BELOW~~ ON

~~LEFT - & PAV'T. - RIGHT~~ ON

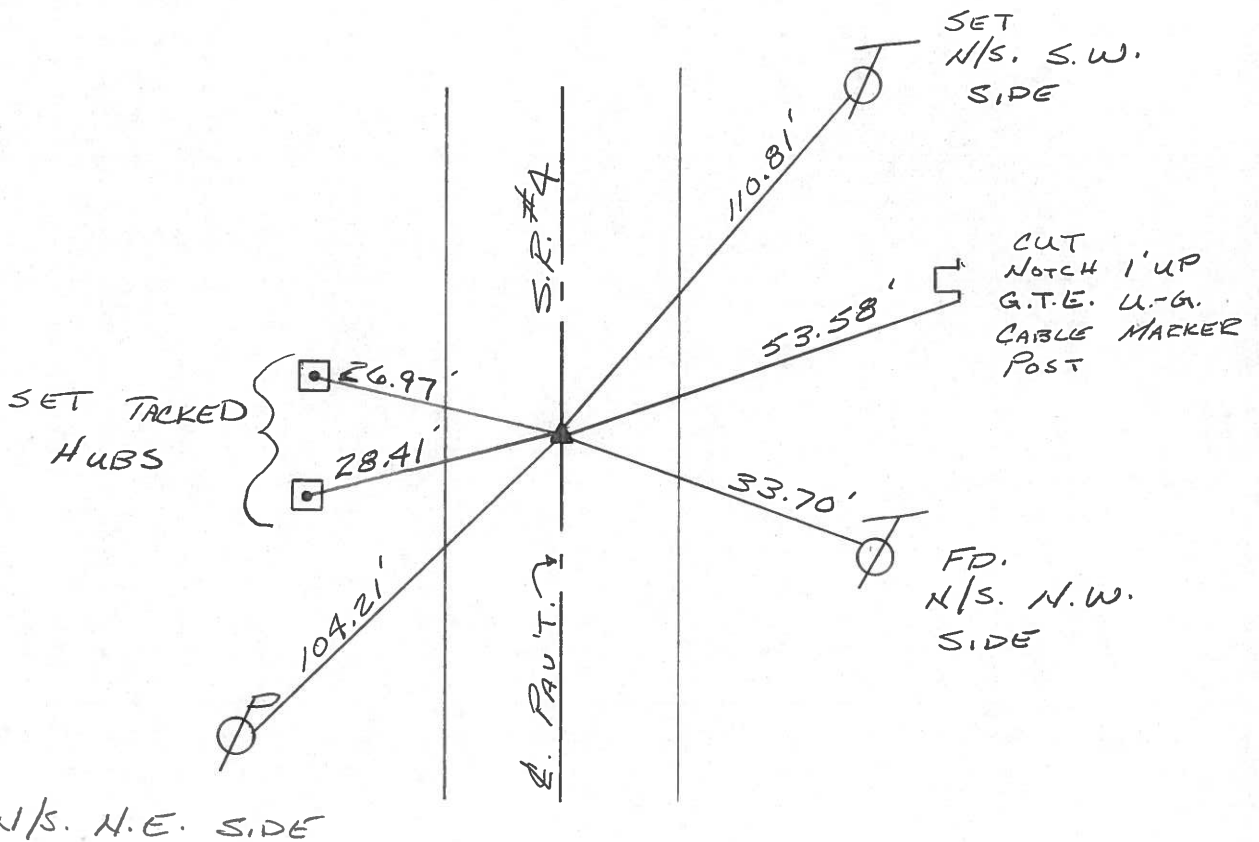
11' TO RT EDGE PAVEMENT

S.L.M. 469+11



RECORD: 5-21-1987
 STA. 466+97.65
 PK/WASHER ATOP
 R.R. SPK. 1 1/2" BELOW
 P.I. Δ = 00° 11' 30" LT.

SET PK/WASHER
 10-13-1993
 RCC



O.D.O.T. DISTRICT 2 SURVEY OFFICE

PERSONNEL

NOTES Cronin
H.C. Ripple
R.C. Barbour
Geyman

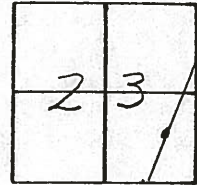
REFERENCE NO. _____
DRAWN 12/09/87
DATE 5/21/87
WEATHER cloudy
TEMP. 75°

SHEET 10 OF _____

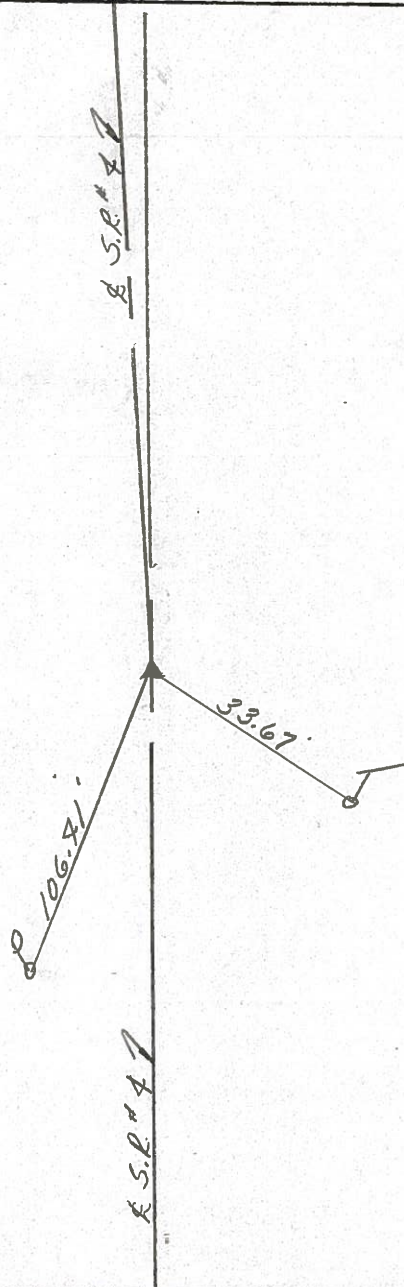
ROUTE S.R.# 4
COUNTY Seneca
TOWNSHIP Reed
SECTION 23
T 2 N R 14 E

TYPE MONUMENT P.K. & washer
ON SURFACE - BELOW on surface
LEFT - ☉ PAV'T. - RIGHT ☉
TO _____ EDGE PAVEMENT
S.L.M. _____

18A



P.I. Δ = 00° 11' 30" Lt.
466 + 97.65
R.R. spike 1/2" below
surface



PERSONNEL	TITLE	PERSONNEL	TITLE
Schneider		Potts	
Mosser			
Barbour			
Redding			

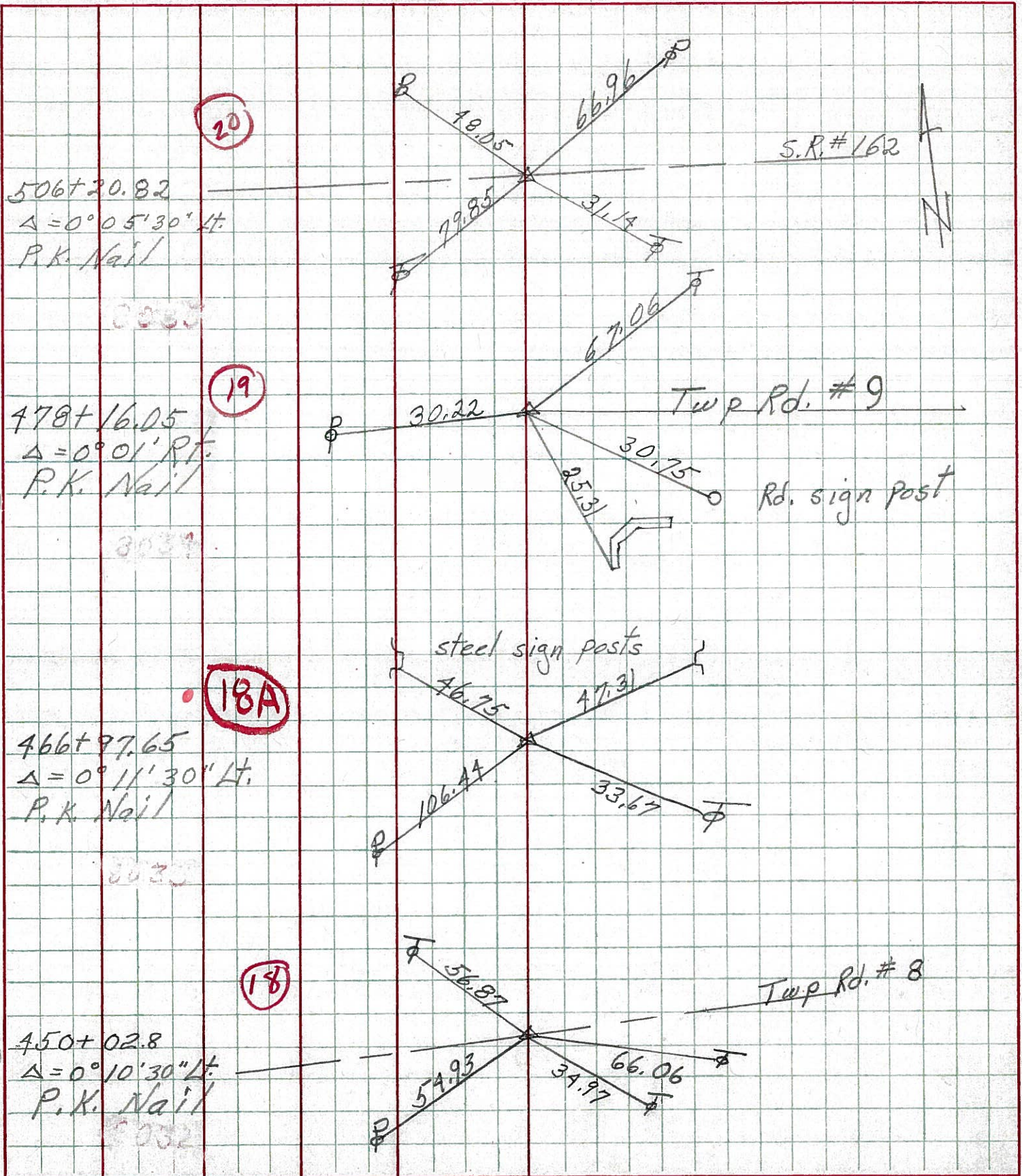
COUNTY Seneca DATE 10-2-68

S. R. 4 WEATHER Cloudy-Windy

SEC. _____ TEMP. 75°

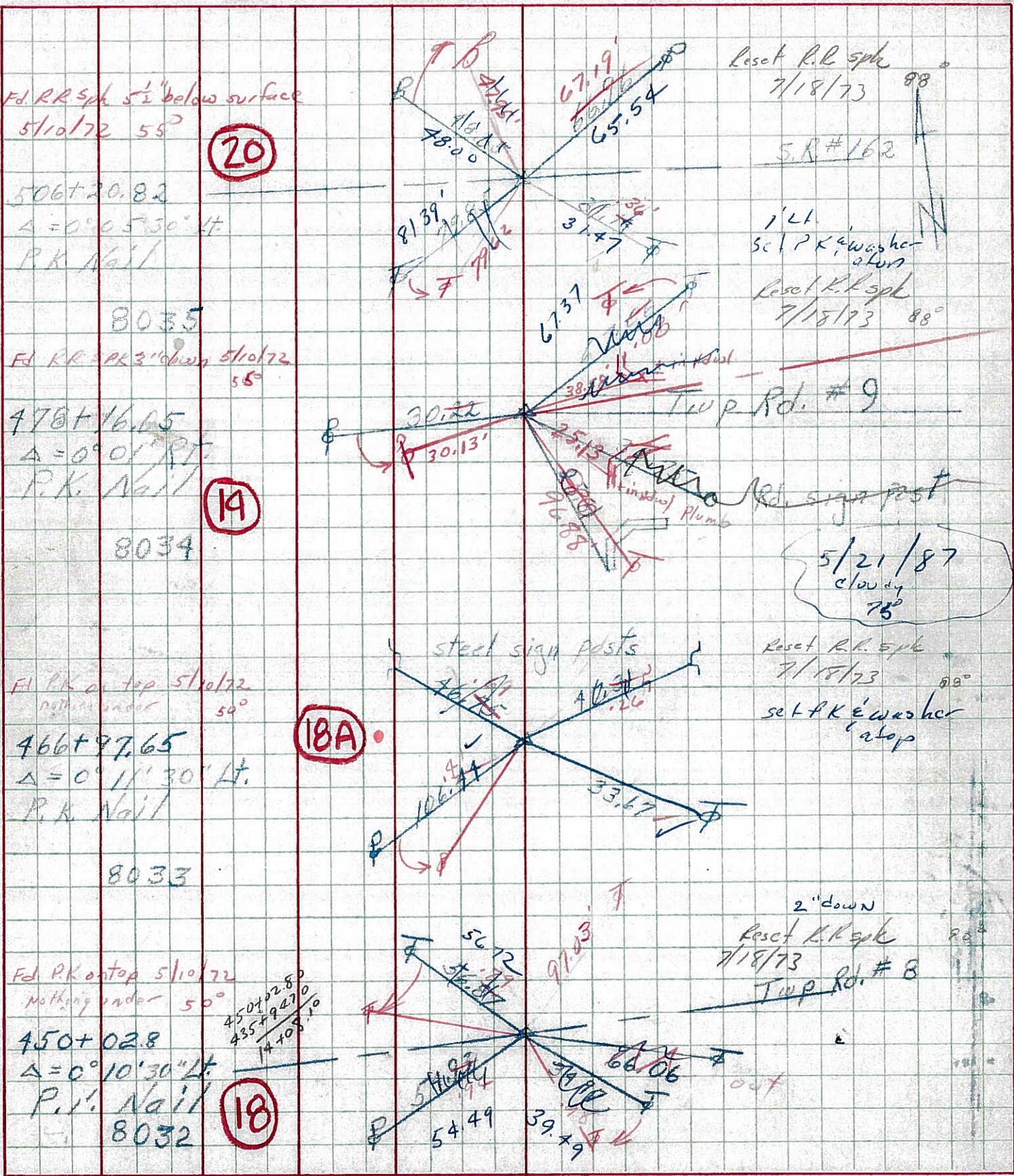
DESCRIPTION Ties for Control Points JOB NO. _____

LEFT CENTER LINE RIGHT



PERSONNEL	TITLE	PERSONNEL	TITLE	COUNTY	DATE
Schneider		Potts		Seneca	10-2-68
Messer				S. R.	4
Barbour				WEATHER	cloudy - Windy
Redding				SEC.	
				TEMP.	75°

DESCRIPTION Ties for Control Points JOB NO. _____

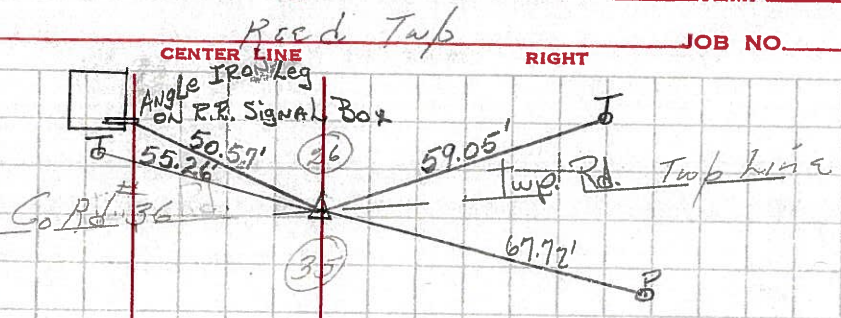


PERSONNEL TITLE PERSONNEL TITLE COUNTY Seneca DATE
 Kowaleski _____
 Krabill _____ S. R. 4 WEATHER _____
 Brooks _____
 SEC. _____ TEMP _____

DESCRIPTION LEFT CENTER LINE RIGHT JOB NO.

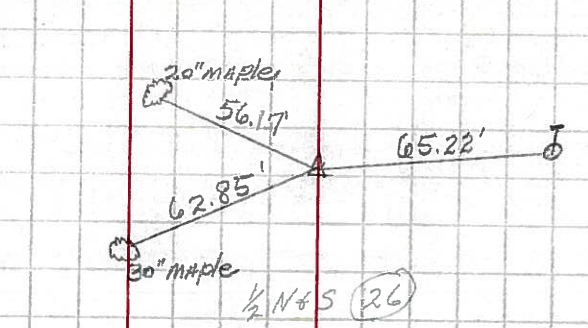
393+98.4 #254
 P.K. NAIL 1-21-64
 P.I. Δ = 0°-04' RT.

16B



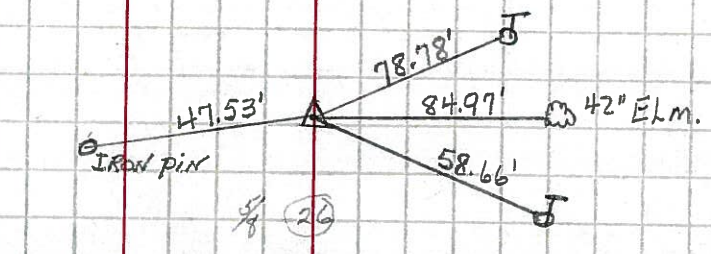
410+90.54 #255
 P.I. Δ = 0°-03' LT.
 P.K. NAIL 1-21-64

17



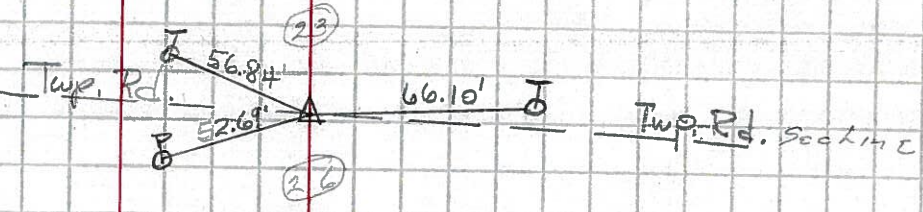
435+94.7 #256
 P.I. Δ = 0°-03' RT.
 P.K. NAIL 1-21-64

17A



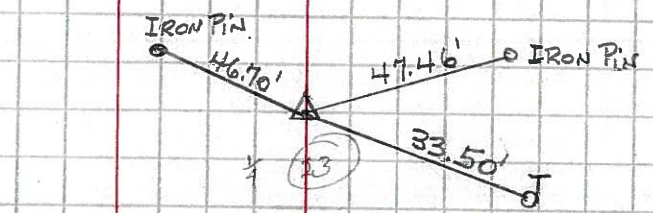
450+02.80 #257
 P.I. Δ = 0°-10'-30" LT.
 P.K. NAIL 1-21-64

18



466+97.65 257-A
 P.I. Δ = 0°-11'-30" Lt.
 P.K. NAIL 1-21-64

18A



ALL MEASUREMENTS FOR THIS POINT ONLY ARE PLUMBED.