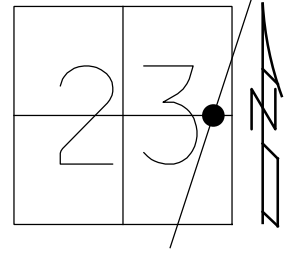


O.D.O.T. DISTRICT 2 SURVEY OFFICE (USE ONLY)

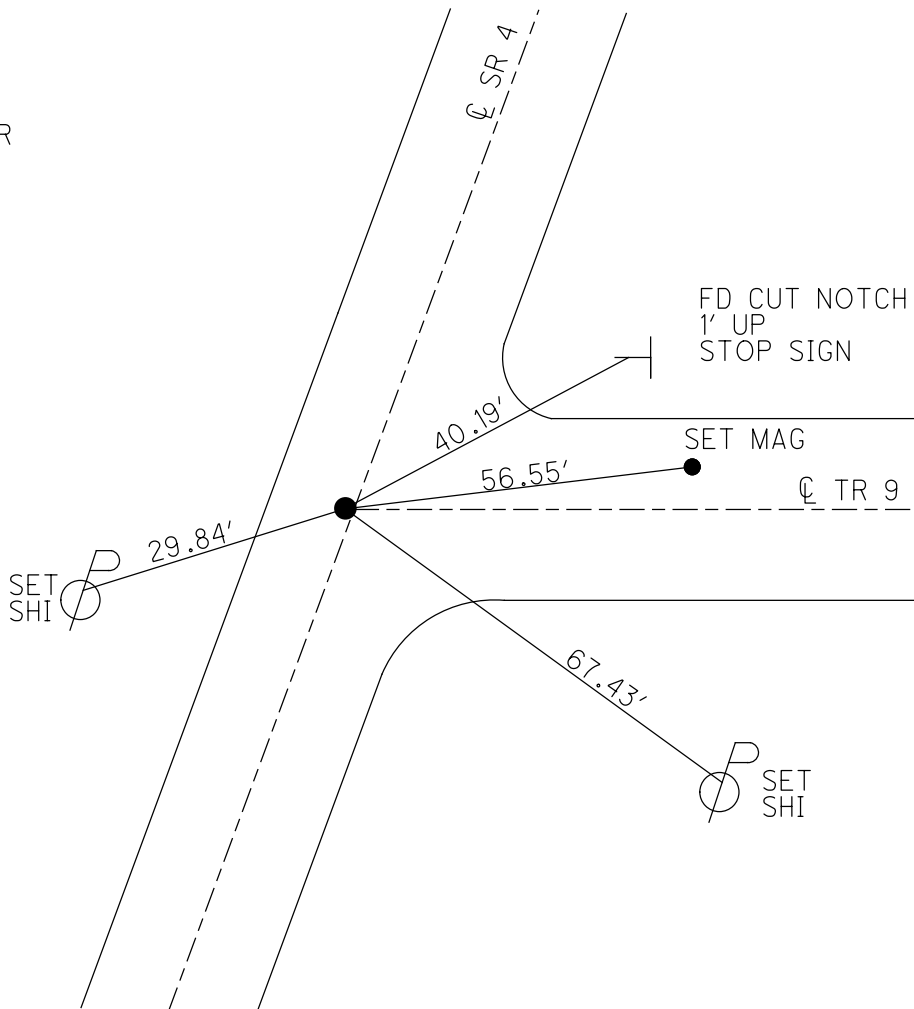
PERSONNEL \_\_\_\_\_ REFERENCE NO. 19 SHEET 40 OF 56  
 NOTES MOSER DATE 8/13/10 ROUTE SR 4  
 H.C. GOLDBERG WEATHER SUNNY COUNTY SENECA  
 R.C. FINTEL TEMP. 90° TOWNSHIP REED  
 \_\_\_\_\_ SECTION 23  
 DWG BY NASON PID PAVETRAIN T 2 N R 17 E

TYPE MONUMENT P.K./WASHER  
 ON SURFACE - ~~BELOW~~ ON \_\_\_\_\_  
 OFFSET  $\text{C}$  PAVEMENT 1' LT : ~~RT~~  
9.5' TO LT EDGE PAVEMENT  
 STATION: 479+04.94



HORZ.DATUM: NAD83 2011 GEOID: 2012A  
 GRID: NORTHING: 528623.134 EASTING: 1868484.849

RECORD: P.I.  
 STA. 478+16.05  
 $\Delta = 00^{\circ}01' \text{ RT}$   
 P.K./WASHER  
 ATOP R.R.SPIKE  
 5/21/87  
 SET P.K./WASHER  
 7/2/01, BWC  
 FD P.K./WASHER  
 SV13512  
 9/16/09, KPM  
 FD P.K./WASHER  
 REF19  
 4.18/19, JFO  
 8/19/19, JFO  
 1/20/23, JMR



O.D.O.T. DISTRICT 2 SURVEY OFFICE (USE ONLY)

PERSONNEL

REFERENCE NO. 19

SHEET 40 OF 41

NOTES MOSER DATE 8/13/10

H.C. GOLDBERG WEATHER SUNNY

R.C. FINTEL TEMP. 90°

ROUTE SR 4

COUNTY SENECA

TOWNSHIP REED

SECTION 23

DWG BY NASON PID 107060

T 2 N R 17 E

TYPE MONUMENT P.K./WASHER

ON SURFACE - ~~BELOW~~ ON

OFFSET Q PAVEMENT 1' LT : ~~RT~~

9.5' TO LT EDGE PAVEMENT

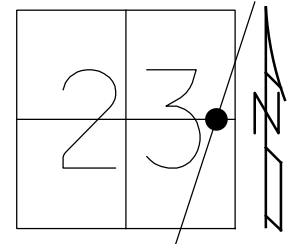
STATION: 479+04.94

HORZ.DATUM: NAD83 2011

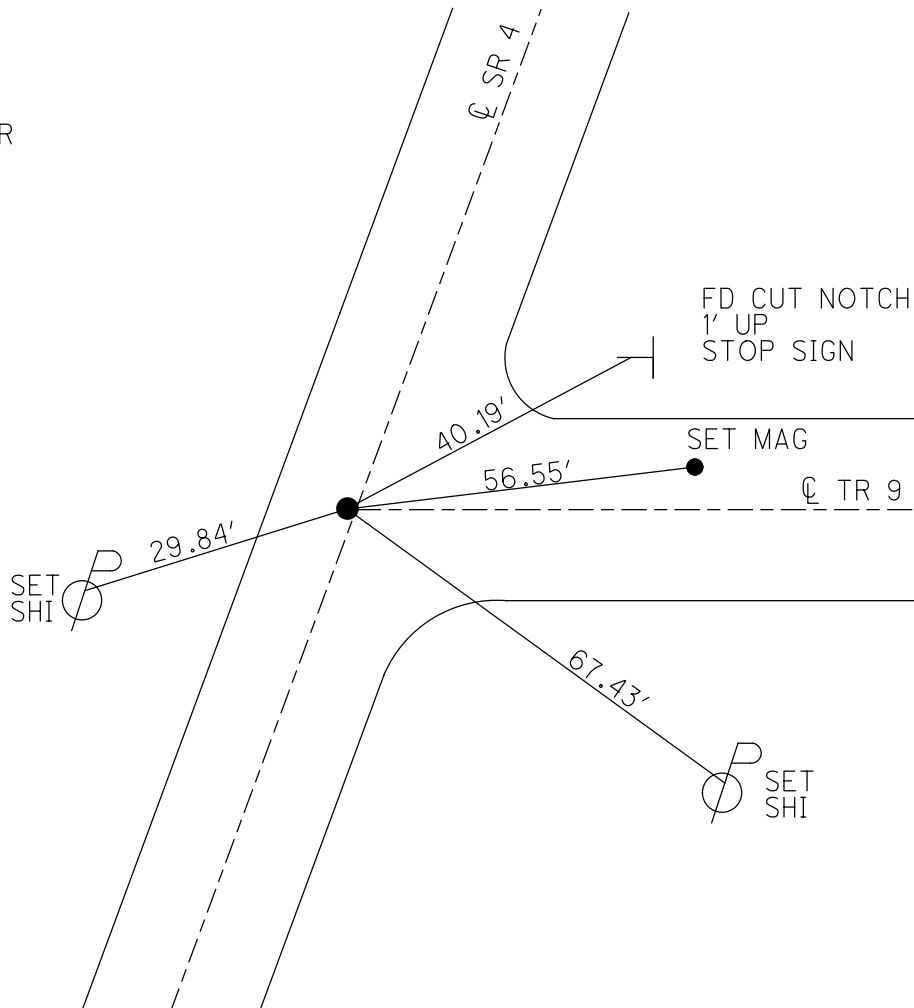
GEOID: 2012A

GRID: NORTHING: 528623.134

EASTING: 1868484.849



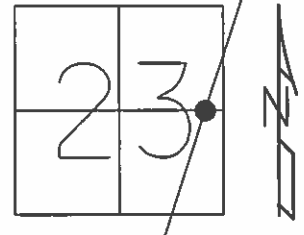
RECORD: P.I.  
 STA. 478+16.05  
 $\Delta = 00^{\circ}01' RT$   
 P.K./WASHER  
 ATOP R.R.SPIKE  
 5/21/87  
 SET P.K./WASHER  
 7/2/01, BWC  
 FD P.K./WASHER  
 SV13512  
 9/16/09, KPM  
 FD P.K./WASHER  
 REF19  
 4.18/19, JFO  
 8/19/19, JFO



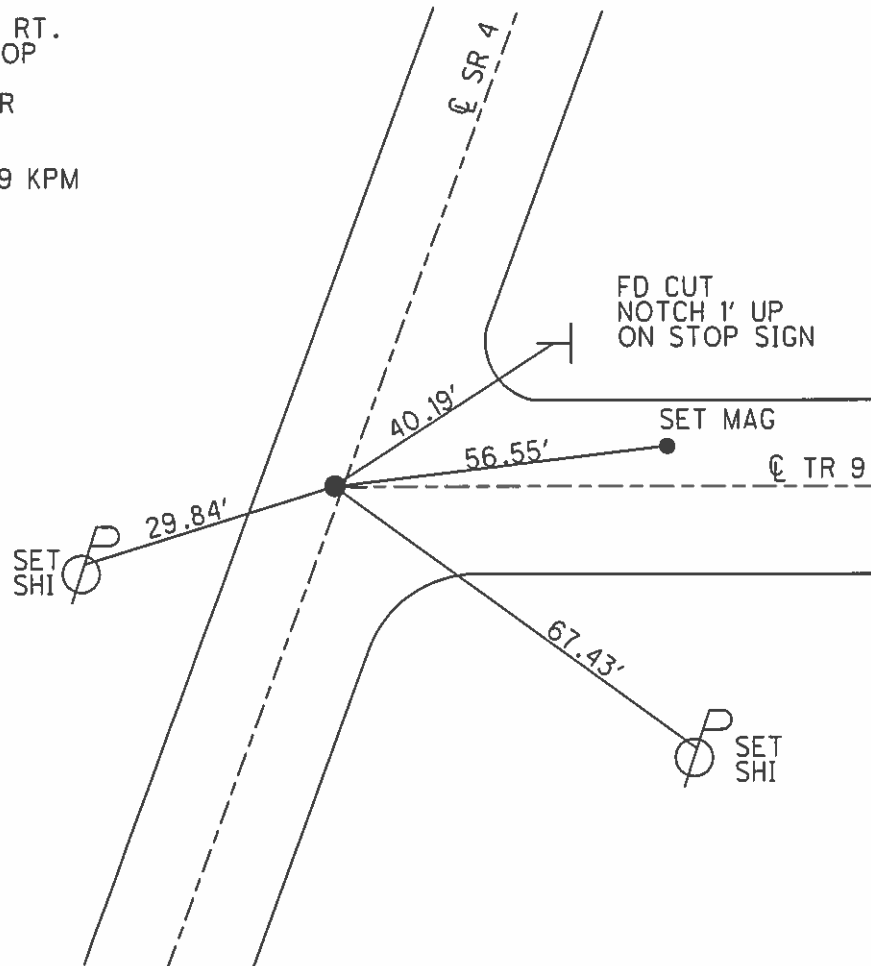
O.D.O.T. DISTRICT 2 SURVEY OFFICE (USE ONLY)

PERSONNEL \_\_\_\_\_ REFERENCE NO. 19 SHEET 40 OF 41  
 NOTES MOSER DATE 8/13/10 ROUTE SR 4  
 H.C. GOLDBERG WEATHER SUNNY COUNTY SENECA  
 R.C. FINTEL TEMP. 90° TOWNSHIP REED  
 \_\_\_\_\_ SECTION 23  
 \_\_\_\_\_ T 2 N R 17 E

TYPE MONUMENT P.K./WASHER  
 ON SURFACE - ~~BELOW~~ ON \_\_\_\_\_  
 LEFT - ☉ PAV'T - ~~RIGHT~~ 1'  
9.5' TO LT EDGE PAVEMENT  
 S.L.M. 479+04.94



RECORD: 5/21/1987  
 STA. 478+16.05  
 P.I. Δ = 00° 01' RT.  
 P.K./WASHER ATOP  
 R.R.SPK.  
 SET P.K./WASHER  
 7/2/01 BWC  
 FD P.K./WASHER  
 SV 13512 9/16/09 KPM



O.D.O.T. DISTRICT 2 SURVEY OFFICE

PERSONNEL

REFERENCE NO. 19

SHEET 5 OF 19

NOTES Cordes

H.C. Brown

DATE 5-30-01

ROUTE 4

R.C. Homan

WEATHER Sunny

COUNTY Seneca

TEMP. 64°

TOWNSHIP Reed

SECTION 23

T2 N R 17 E

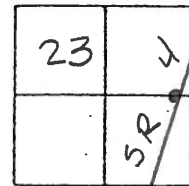
TYPE MONUMENT PK/Washer

ON SURFACE - ~~BELOW~~ on

LEFT - & PAV'T. - ~~RIGHT~~ 1'

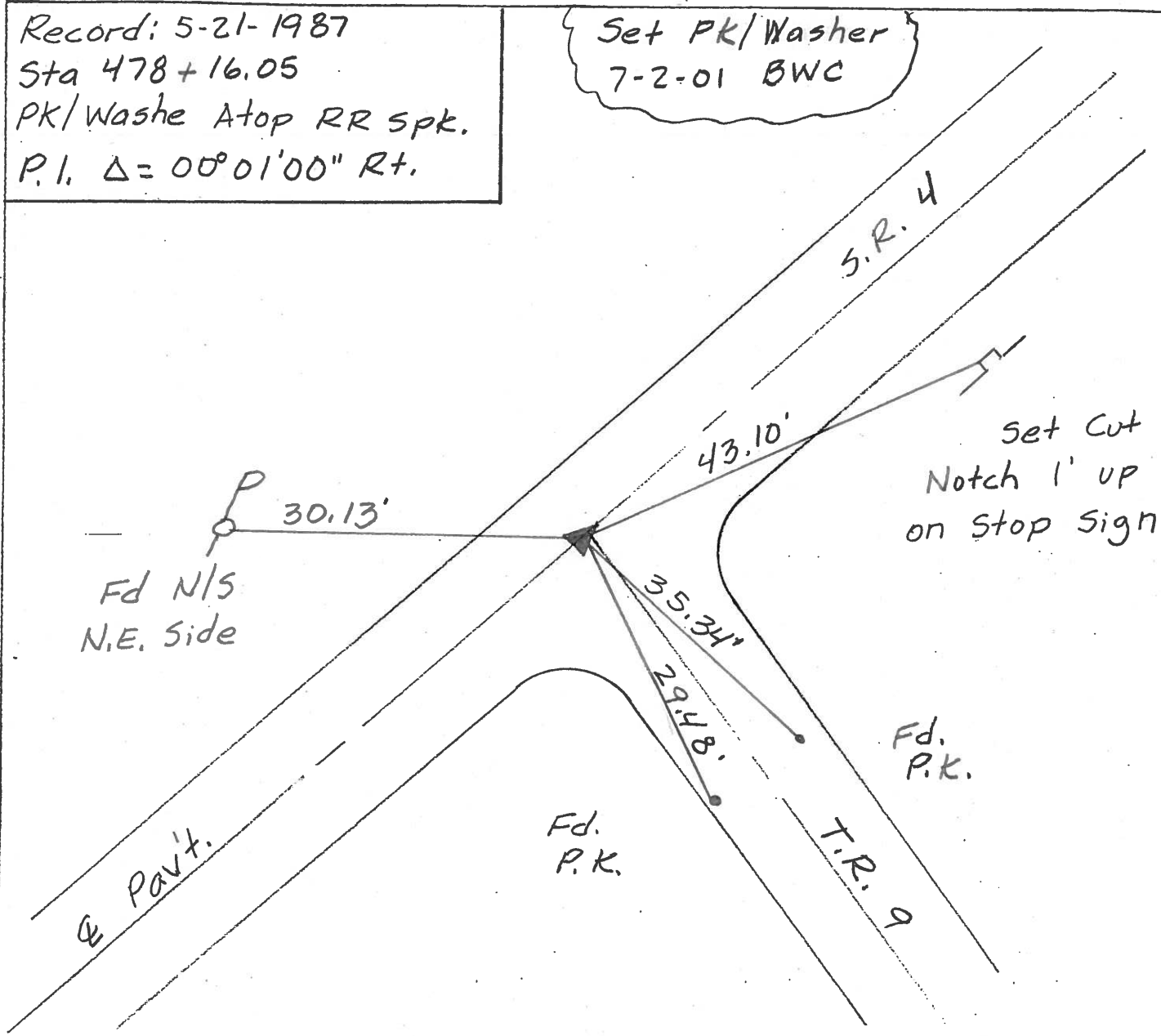
10' TO Lt EDGE PAVEMENT

S.L.M. 480+33



Record: 5-21-1987  
 Sta 478+16.05  
 PK/Washe Atop RR spk.  
 P.I.  $\Delta = 00^{\circ}01'00''$  Rt.

Set PK/Washer  
 7-2-01 BWC



O.D.O.T. DISTRICT 2 SURVEY OFFICE

PERSONNEL

REFERENCE NO. 19

SHEET 36 OF 50

NOTES CHENEY

H.C. RIPPLE

DATE 10-21-1992

ROUTE #4

R.C. BARBOUR

WEATHER CLOUDY

COUNTY SENECA

GREYMAN

TEMP. 45°

TOWNSHIP FEED

SECTION 23

T2 NR 17E

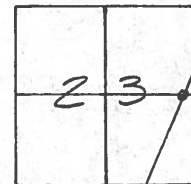
TYPE MONUMENT PK/WASHER

ON SURFACE - ~~BELOW~~ ON

LEFT - 0 PAV'T. - ~~RIGHT~~ 1'

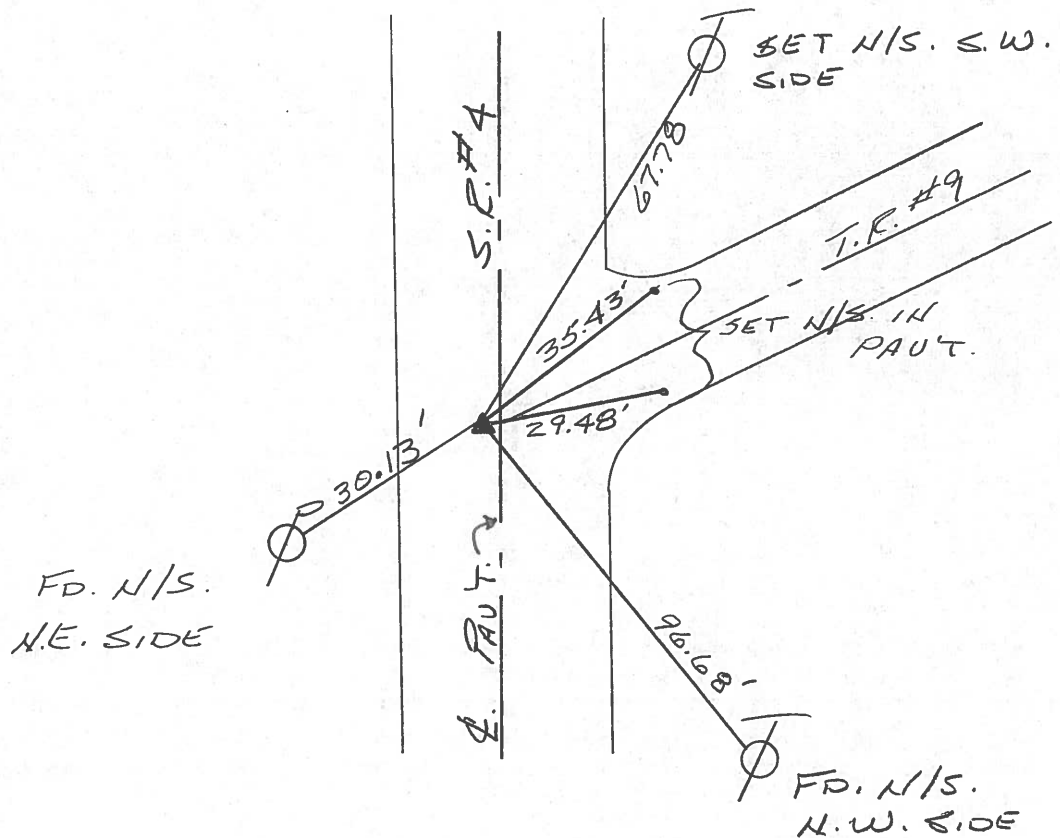
10' TO LT. EDGE PAVEMENT

S.L.M. 480+33



RECORD: 5-21-1987  
 STA. 478+16.05  
 PK/WASHER ATOP  
 RR. SPK. 4 1/2" BELOW  
 P.I. Δ = 00° 01' 00" RT.

SET PK/WASHER  
 10-13-1993  
 RCC



# O.D.O.T. DISTRICT 2 SURVEY OFFICE

PERSONNEL

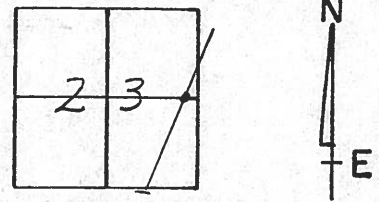
NOTES Cronin  
 H.C. Ripple  
 R.C. Barbour  
Geyman

REFERENCE NO. 19  
 DRAWN 12/09/87  
 DATE 5/21/87  
 WEATHER cloudy  
 TEMP. 75°

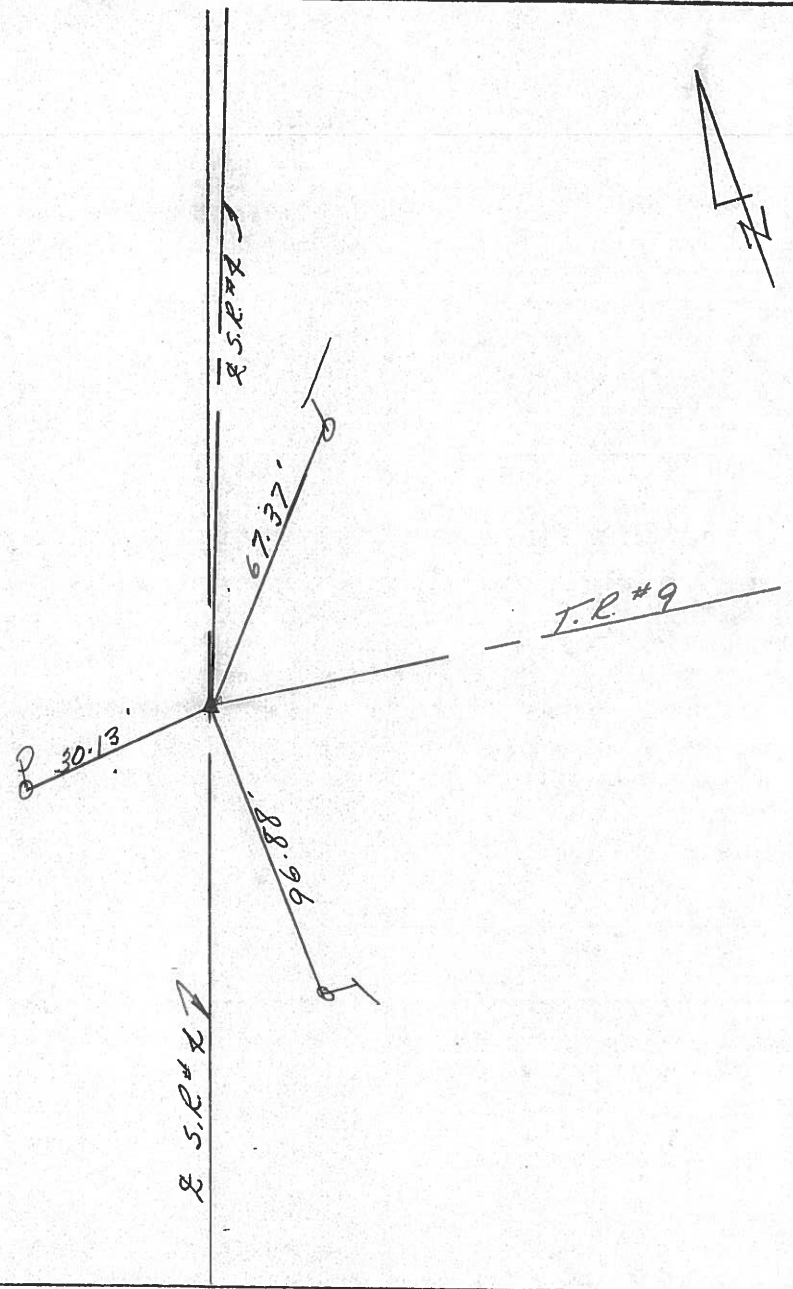
SHEET 11 OF     

ROUTE S.R.#4  
 COUNTY Seneca  
 TOWNSHIP Reed  
 SECTION 23  
T 2 N R 17 E

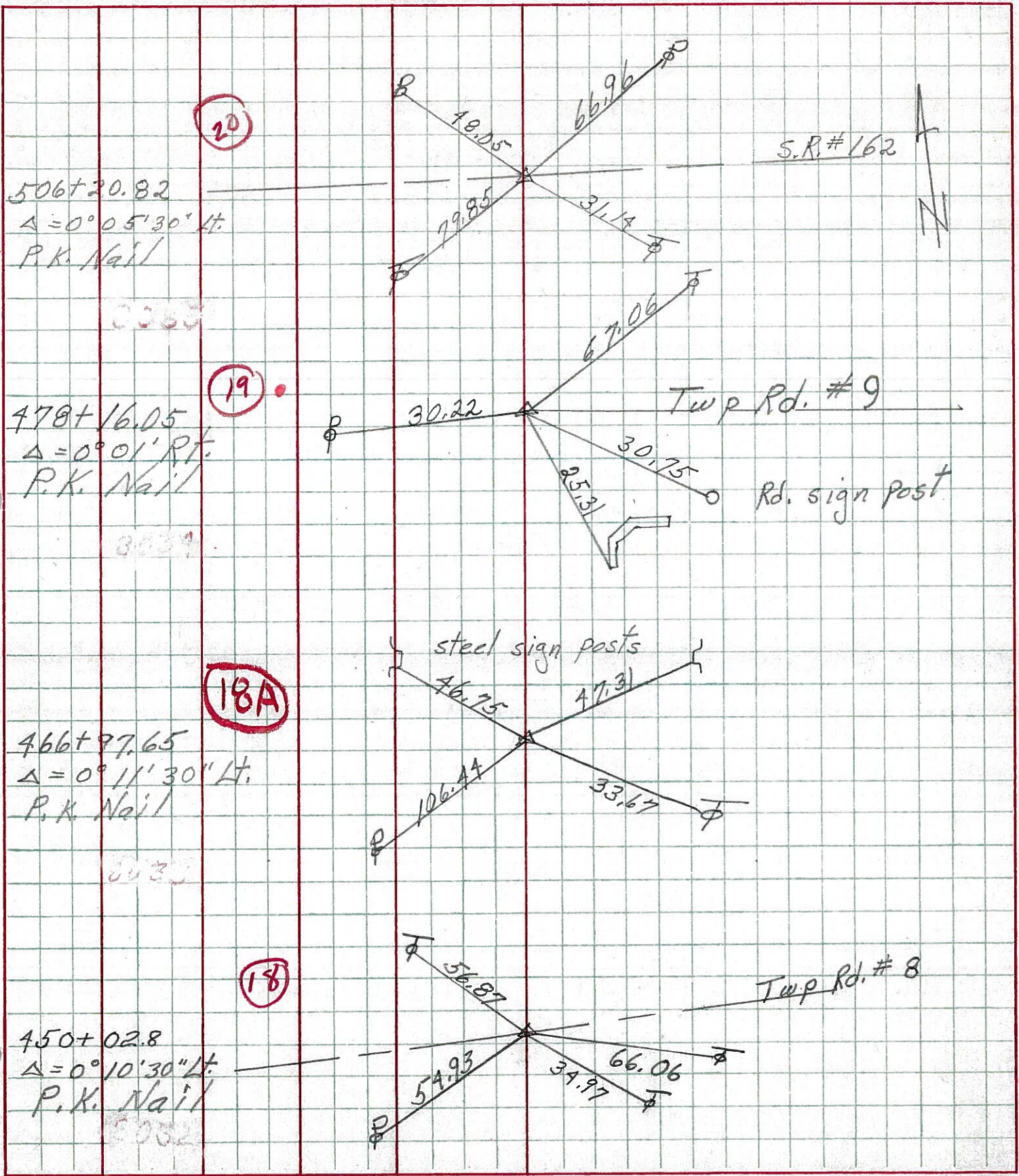
TYPE MONUMENT P.K. & washer  
 ON SURFACE - BELOW on surface  
 LEFT- & PAV'T. - RIGHT 1' Lt. & Pavt.  
 TO      EDGE PAVEMENT  
 S.L.M.     



P.I. A = 00° 01' 00" Rt.  
478 + 16.05  
R.R. spike 4 1/2" below  
surface



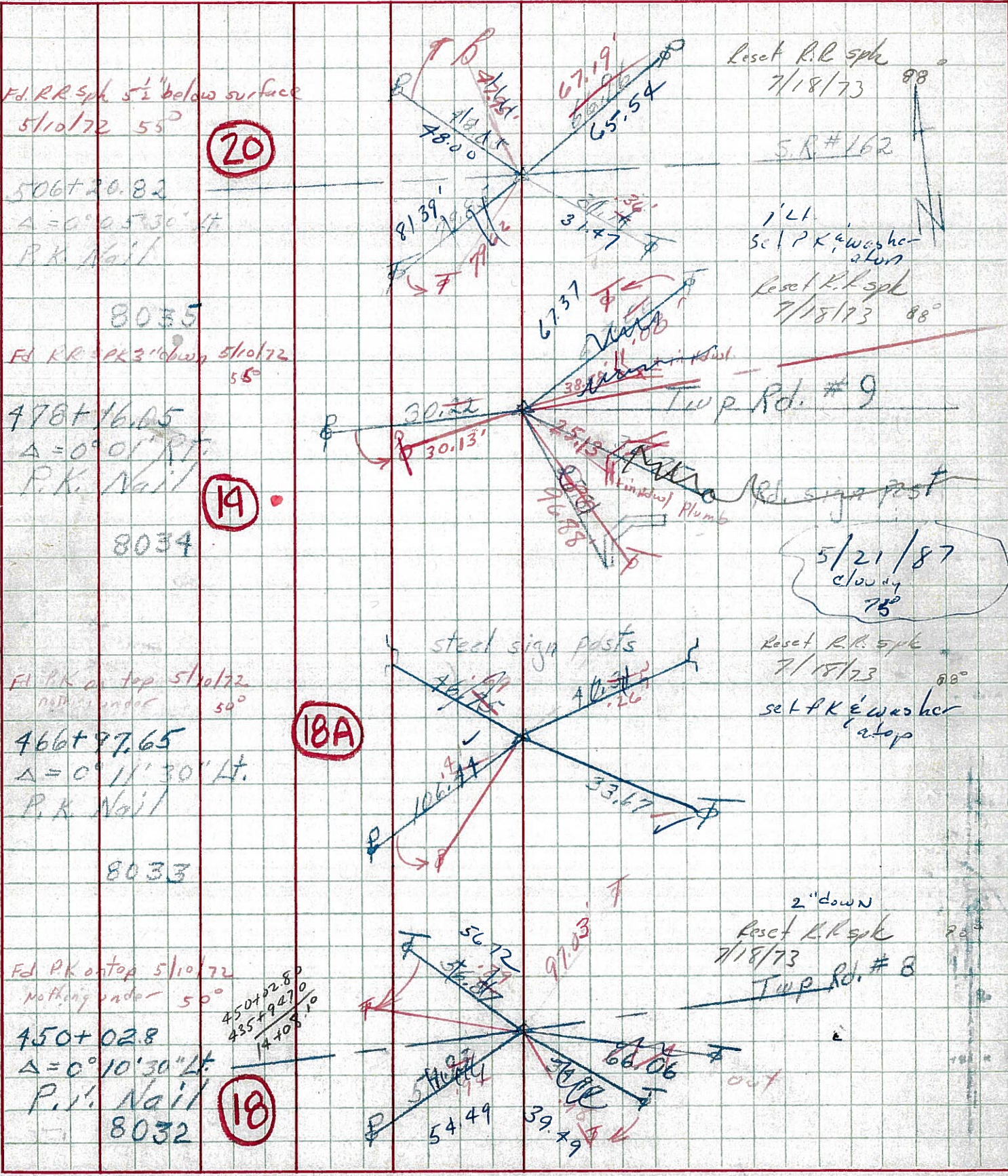
PERSONNEL	TITLE	PERSONNEL	TITLE	COUNTY	Seneca	DATE	10-2-68
Schneider		Potts		S. R.	4	WEATHER	Cloudy-Windy
Mosser				SEC.		TEMP.	75°
Barbour				DESCRIPTION <u>Ties for Control Points</u>			
Redding				JOB NO.			



PERSONNEL TITLE PERSONNEL TITLE  
 Schneider \_\_\_\_\_  
 Mosser \_\_\_\_\_  
 Barbour \_\_\_\_\_  
 Redding \_\_\_\_\_

COUNTY Seneca DATE 10-2-68  
 S. R. 4 WEATHER cloudy - cloudy  
 SEC. \_\_\_\_\_ TEMP. 75°

DESCRIPTION Ties for Control Points LEFT CENTER LINE RIGHT JOB NO. \_\_\_\_\_





PERSONNEL TITLE PERSONNEL TITLE

COUNTY Seneca

DATE

KraBill  
Kowaleski  
Brooks

S. R. 4

WEATHER

SEC.

TEMP.

DESCRIPTION

LEFT

CENTER LINE

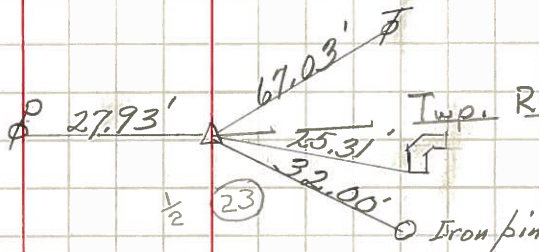
RIGHT

JOB NO.

478+16.05 #258  
P.I.  $\Delta=0^{\circ}01'00''$   
P.K. nail

(19)

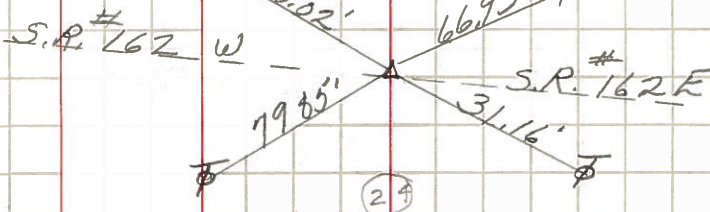
1-21-64



506+20.82 5' "A"  
P.I.  $\Delta=0^{\circ}05'30''$  LT  
P.K. nail

(20)

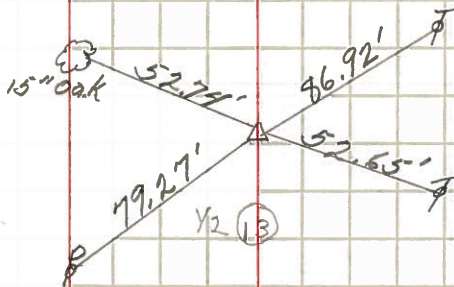
1-21-64



534+13.76 #259  
P.I.  $\Delta=0^{\circ}05'30''$  RT  
P.K. nail

(21)

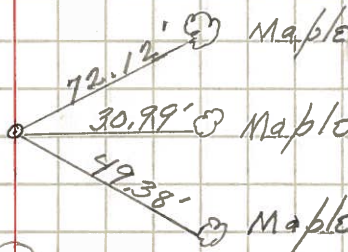
1-22-64



557+32.53 5' A  
P.O.T.  $\Delta 0^{\circ}00'00''$   
P.K. nail

(21A)

1-22-64



13 (13)