

O.D.O.T. DISTRICT 2 SURVEY OFFICE (USE ONLY)

PERSONNEL

REFERENCE NO. 20

SHEET 41 OF 56

NOTES POORE

DATE 8/2/17

ROUTE SR 4

H.C. HOMAN

WEATHER SUNNY

COUNTY SENECA

R.C. CARSON  
RHOADES

TEMP. 77°

TOWNSHIP REED

DWG BY RHOADES

PID PAVETRAIN

SECTION 13

T 2 N R 17 E

TYPE MONUMENT SM.R.R.SPIKE

~~ON SURFACE~~ - BELOW 2"

OFFSET  $\bar{C}$  PAVEMENT ON LT : RT

11' TO RT EDGE PAVEMENT

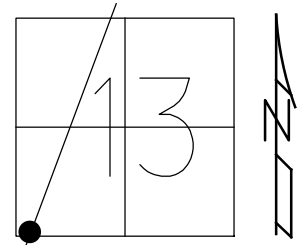
STATION: 507+08.09

HORZ.DATUM: NAD83 2011

GEOID: 2012A

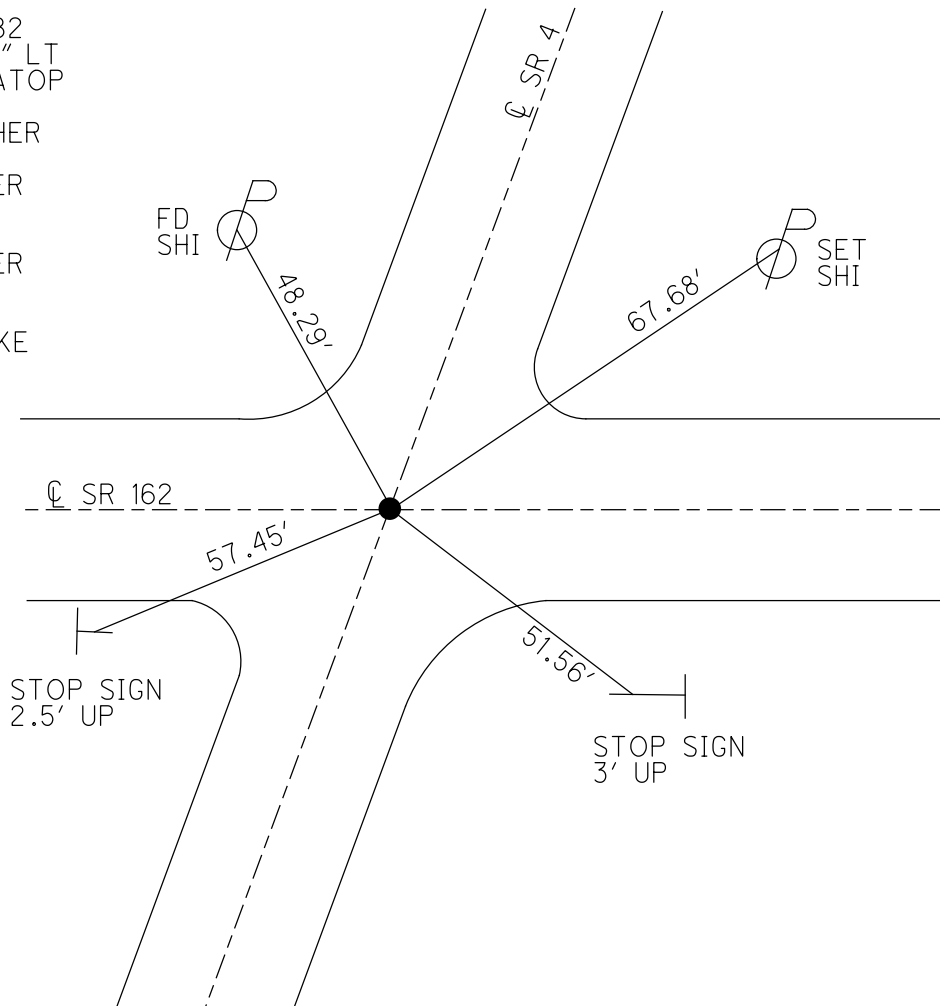
GRID: NORTHING: 531266.125

EASTING: 1869418.741



RECORD: P.I.  
5/21/1987  
STA. 506+20.82  
 $\Delta = 00^{\circ}05' 30''$  LT  
P.K./WASHER ATOP  
R.R.SPK.  
SET P.K./WASHER  
7/2/01, BWC  
FD P.K./WASHER  
SV13612  
9/16/09 KPM  
FD P.K./WASHER  
REF20  
3/12/13, SDC  
FD SM.R.R.SPIKE  
REF20  
6/1/15, JFO  
FD R.R.SPIKE  
2" DOWN  
REF26  
5/31/16, JFO  
8/19/19, JFO  
1/20/23, JMR

NOTE: SR 162 REF 26



O.D.O.T. DISTRICT 2 SURVEY OFFICE (USE ONLY)

PERSONNEL \_\_\_\_\_ REFERENCE NO. 20 SHEET 41 OF 41

NOTES MOSE DATE 8/13/10 ROUTE SR 4

H.C. GOLDBERG WEATHER SUNNY COUNTY SENECA

R.C. FINTEL TEMP. 90° TOWNSHIP REED

DWG BY NASON PID 107060 SECTION 13, 24

T 2 N R 17 E

TYPE MONUMENT P.K./WASHER

ON SURFACE - ~~BELOW~~ ON

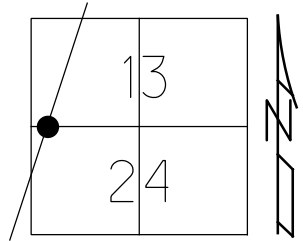
OFFSET Q PAVEMENT ON LT : RT

11' TO RT EDGE PAVEMENT

STATION: 507+08.09

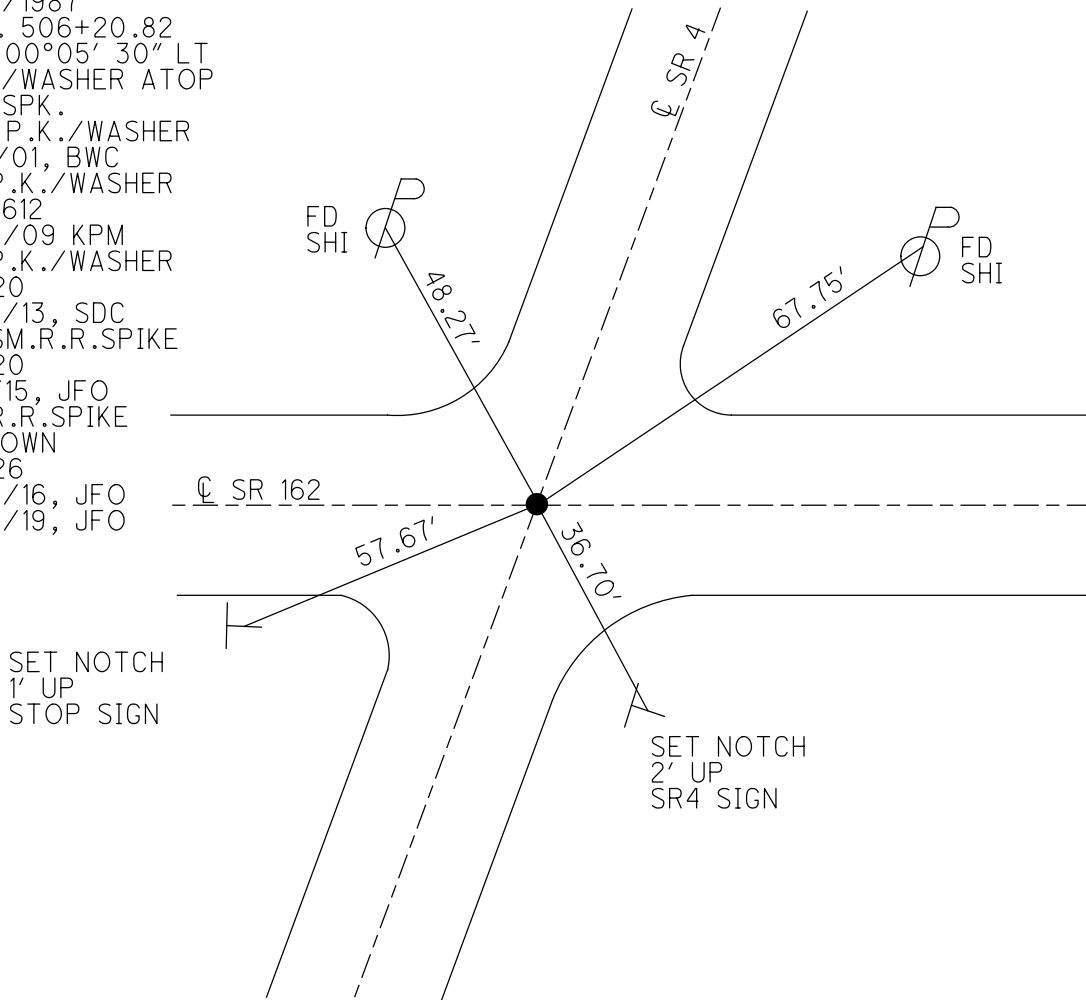
HORZ.DATUM: NAD83 2011 GEOID: 2012A

GRID: NORTHING: 531266.125 EASTING: 1869418.741



RECORD: P.I.  
5/21/1987  
STA. 506+20.82  
 $\Delta = 00^{\circ}05'30''$  LT  
P.K./WASHER ATOP  
R.R.SP.K.  
SET P.K./WASHER  
7/2/01, BWC  
FD P.K./WASHER  
SV13612  
9/16/09 KPM  
FD P.K./WASHER  
REF20  
3/12/13, SDC  
FD SM.R.R.SPIKE  
REF20  
6/1/15, JFO  
FD R.R.SPIKE  
2" DOWN  
REF26  
5/31/16, JFO  
8/19/19, JFO

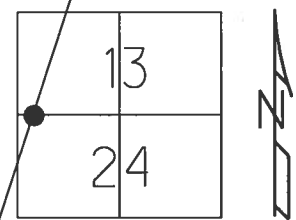
NOTE: SR 162 REF 26



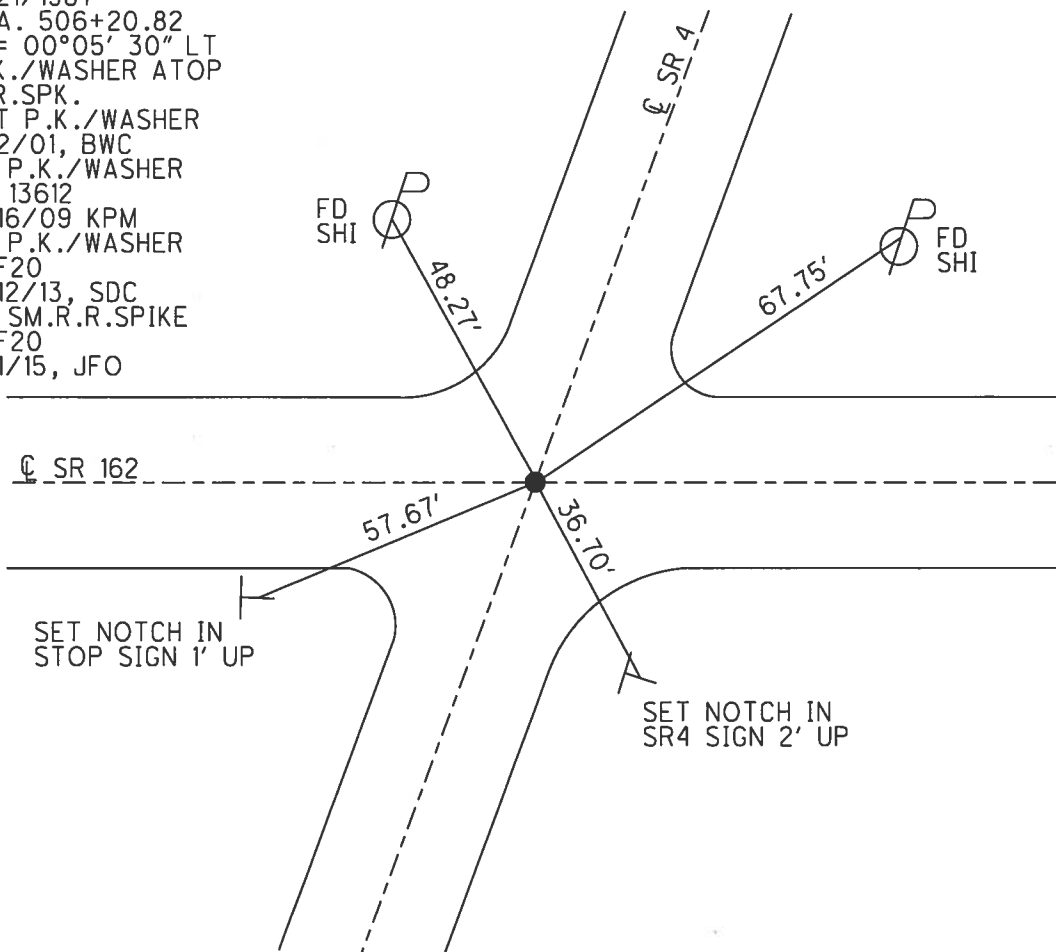
O.D.O.T. DISTRICT 2 SURVEY OFFICE (USE ONLY)

PERSONNEL \_\_\_\_\_ REFERENCE NO. 20 SHEET 41 OF 41  
 NOTES MOSER DATE 8/13/10 ROUTE SR 4  
 H.C. GOLDBERG WEATHER SUNNY COUNTY SENECA  
 R.C. FINTEL TEMP. 90° TOWNSHIP REED  
 SECTION 13, 24  
 T 2 N R 17 E

TYPE MONUMENT P.K./WASHER  
 ON SURFACE - ~~BELOW~~ ON  
 LEFT - ☉ PAV'T - RIGHT ON  
11' TO RT EDGE PAVEMENT  
 S.L.M. 507+40.80



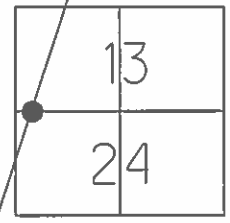
RECORD: P.I.  
 5/21/1987  
 STA. 506+20.82  
 $\Delta = 00^{\circ}05'30''$  LT  
 P.K./WASHER ATOP  
 R.R.SP.K.  
 SET P.K./WASHER  
 7/2/01, BWC  
 FD P.K./WASHER  
 SV 13612  
 9/16/09 KPM  
 FD P.K./WASHER  
 REF20  
 3/12/13, SDC  
 FD SM.R.R.SPIKE  
 REF20  
 6/1/15, JFO



O.D.O.T. DISTRICT 2 SURVEY OFFICE (USE ONLY)

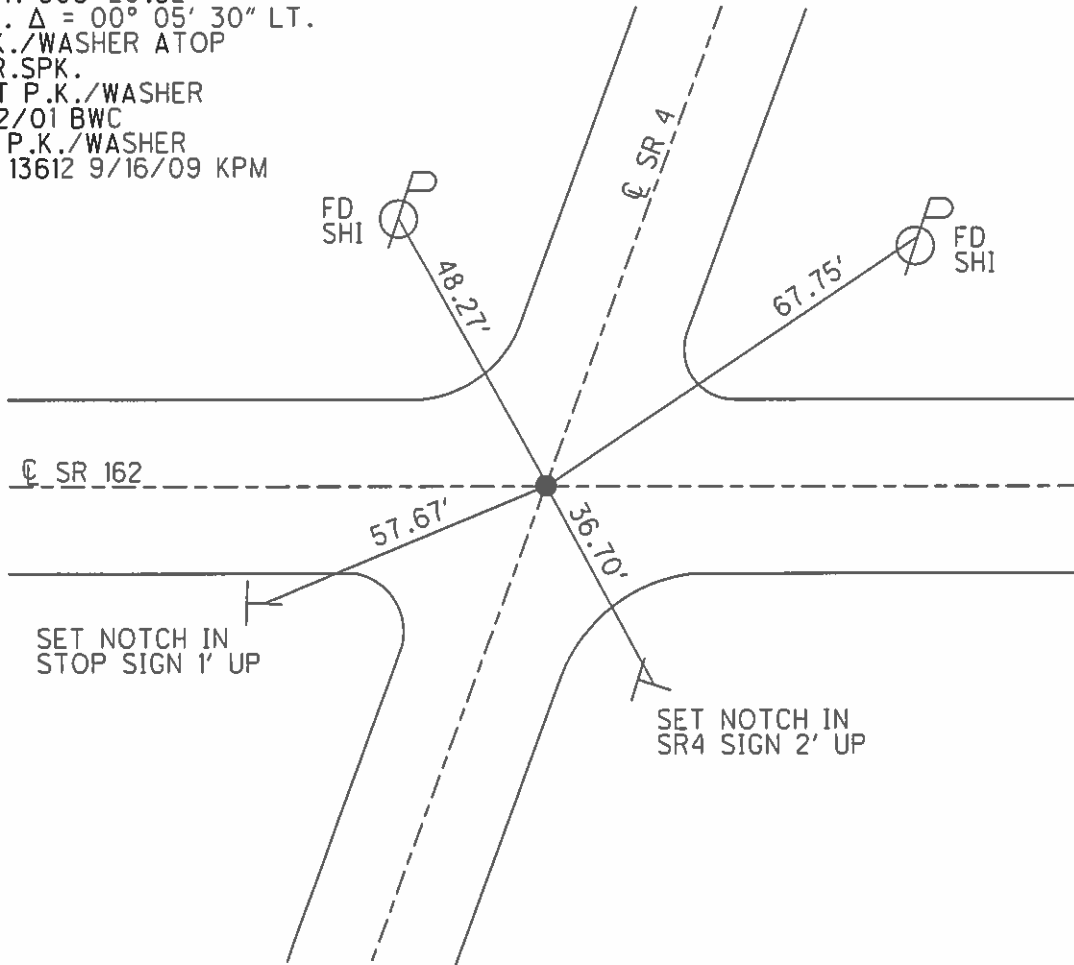
PERSONNEL \_\_\_\_\_ REFERENCE NO. 20 SHEET 41 OF 41  
 NOTES MOSER DATE 8/13/10 ROUTE SR 4  
 H.C. GOLDBERG WEATHER SUNNY COUNTY SENECA  
 R.C. FINTEL TEMP. 90° TOWNSHIP REED  
 \_\_\_\_\_ SECTION 13, 24  
 \_\_\_\_\_ T 2 N R 17 E

TYPE MONUMENT P.K./WASHER  
 ON SURFACE - ~~BELOW~~ ON  
 LEFT - ☉ PAV'T - RIGHT ON  
11' TO RT EDGE PAVEMENT  
 S.L.M. 507+08.09



GRID: NORTHING: 529463.1583 EASTING: 1868770.0008

RECORD: 5/21/1987  
 STA. 506+20.82  
 P.I. Δ = 00° 05' 30" LT.  
 P.K./WASHER ATOP  
 R.R.SPK.  
 SET P.K./WASHER  
 7/2/01 BWC  
 FD P.K./WASHER  
 SV 13612 9/16/09 KPM



O.D.O.T. DISTRICT 2 SURVEY OFFICE

PERSONNEL

REFERENCE NO. 20

SHEET 6 OF 19

NOTES Cordes

H.C. Brown

R.C. Homan

DATE 5-30-01

WEATHER Sunny

TEMP. 64°

ROUTE 4

COUNTY Seneca

TOWNSHIP Reed

SECTION 13

T2 N R 17 E

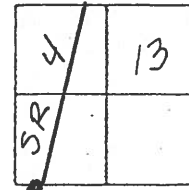
TYPE MONUMENT PK/Washer

ON SURFACE - ~~BELOW~~ on

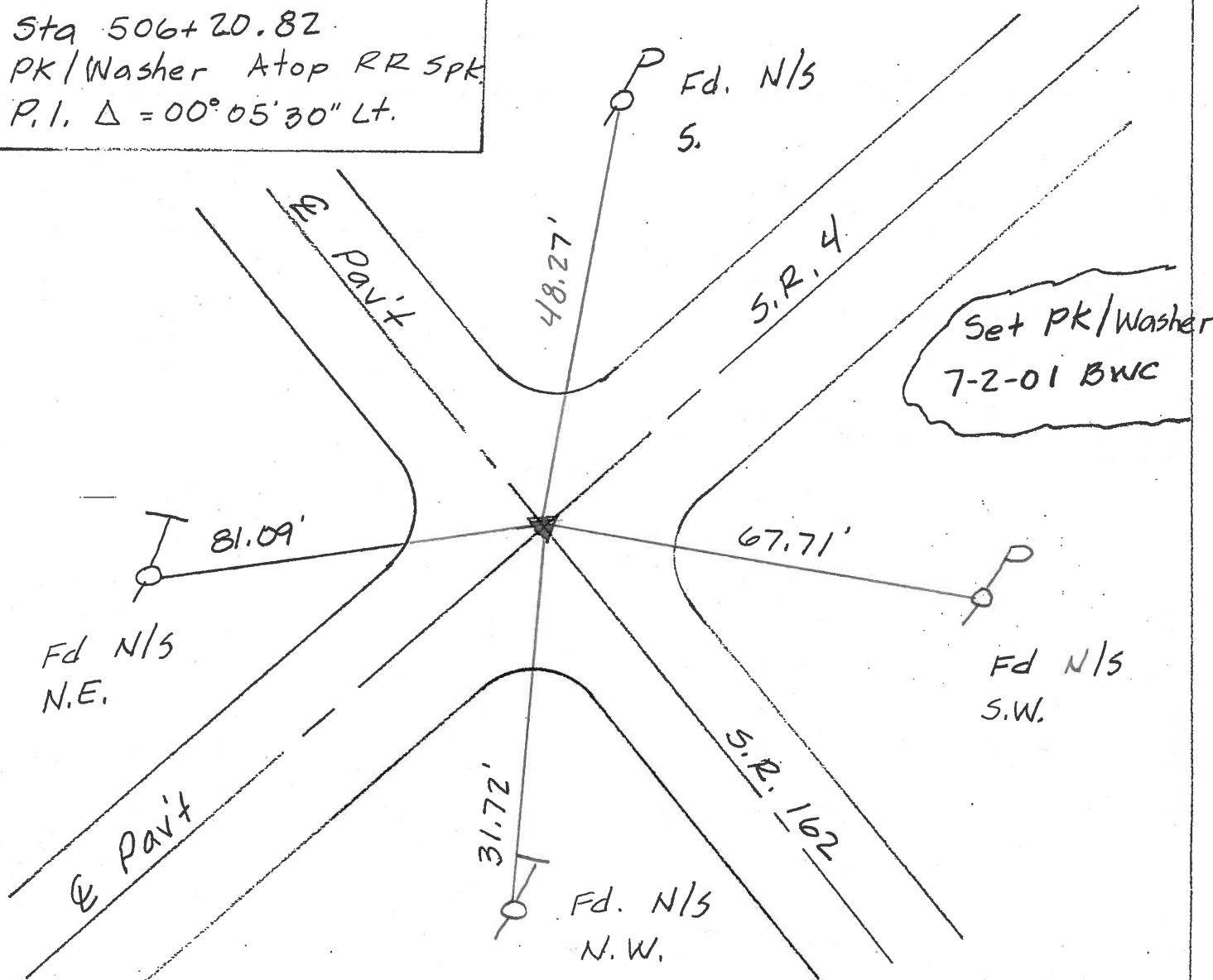
~~LEFT - & PAV'T. - RIGHT~~ on Both

11' TO RT EDGE PAVEMENT

S.L.M. 508+43



Record: 5-21-1987  
 Sta 506+20.82  
 PK/Washer Atop RR SPK  
 P.I.  $\Delta = 00^{\circ}05'30''$  Lt.



O.D.O.T. DISTRICT 2 SURVEY OFFICE

PERSONNEL

REFERENCE NO. 20

SHEET 37 OF 50

NOTES CHENEY

H.C. RIPPLE

R.C. BARBOUR

GEYMAN

DATE 10-21-1992

WEATHER CLOUDY

TEMP. 45°

ROUTE SR#4

COUNTY SENECA

TOWNSHIP REED

SECTION 13

TENRILE

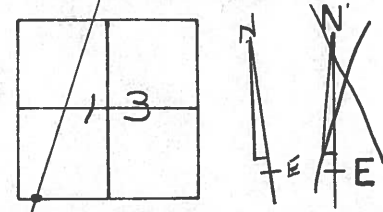
TYPE MONUMENT R.R. SPIKE

~~ON~~ SURFACE - BELOW 1 1/2"

~~LEFT - C~~ PAV'T. - ~~RIGHT~~ ON

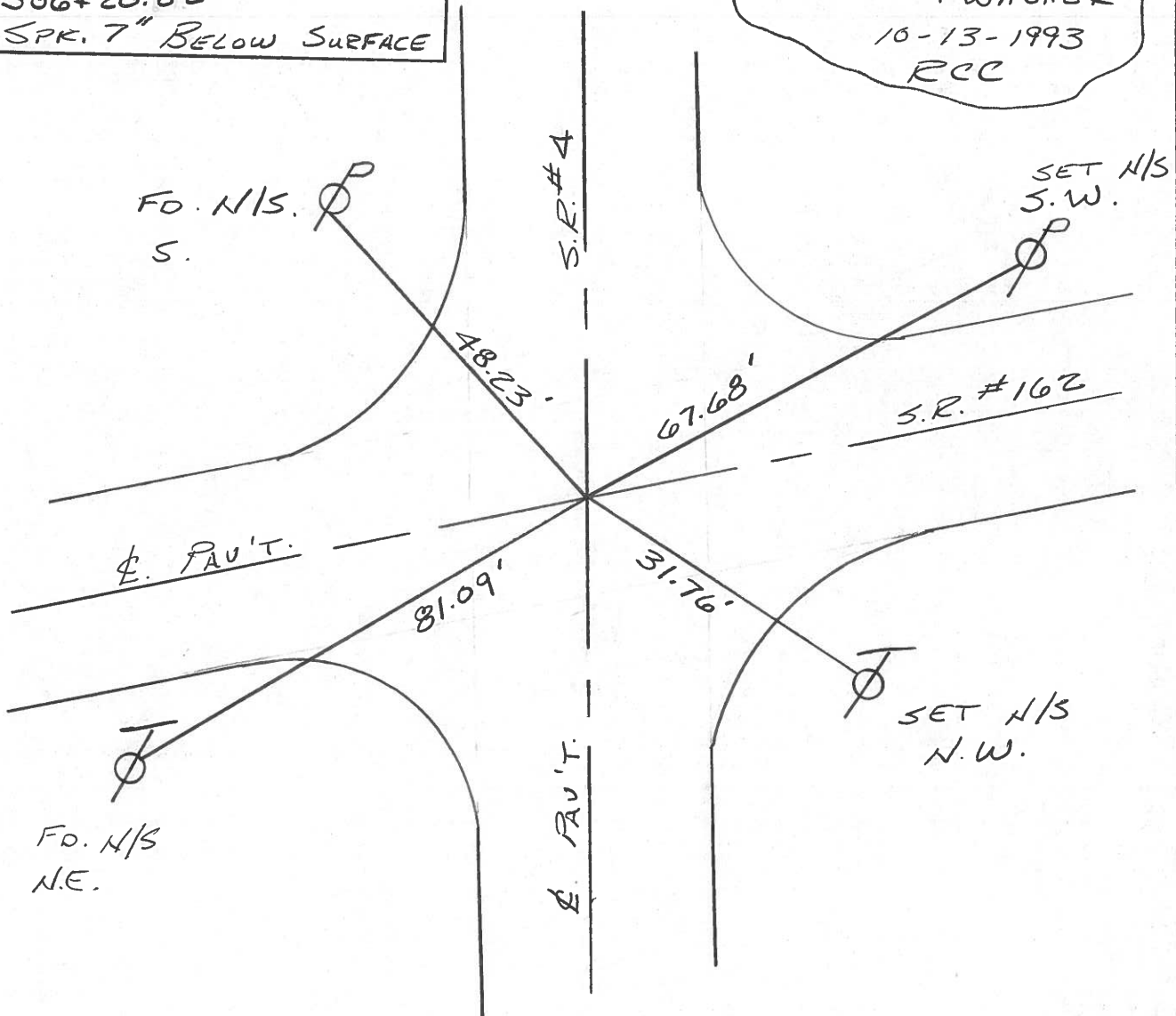
11' TO RT. EDGE PAVEMENT

S.L.M. 508+43



RECORD: 5-21-1987  
 P.I.A. = 00°05'30"LT.  
 STA. 506+20.82  
RR. SPIKE 7" BELOW SURFACE

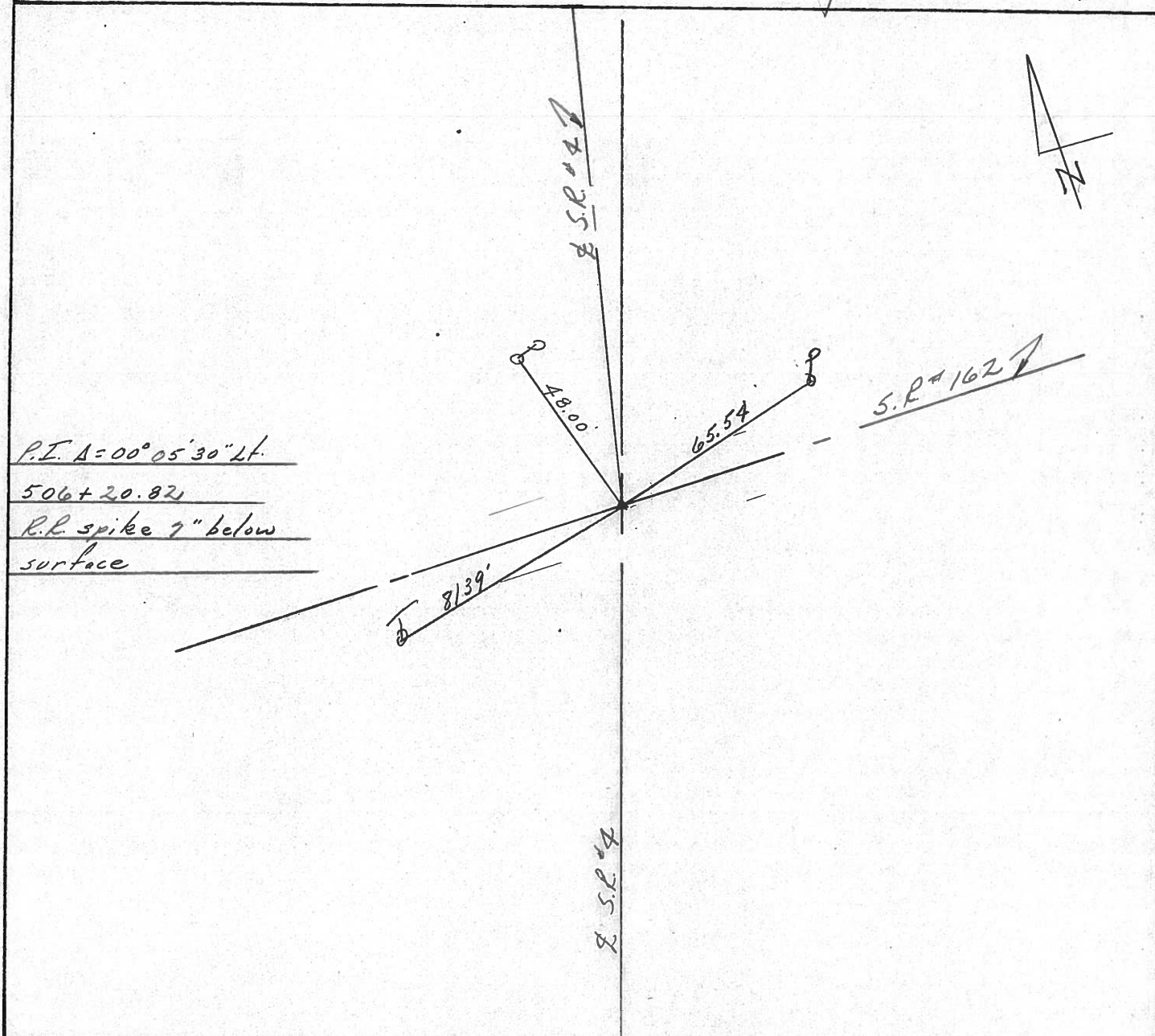
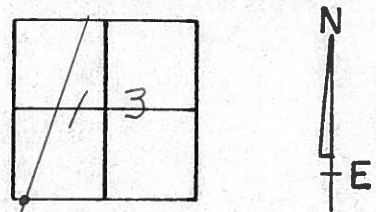
SET PK/WASHER  
 10-13-1993  
 RCC



# O.D.O.T. DISTRICT 2 SURVEY OFFICE

PERSONNEL	REFERENCE NO. <u>20</u>	SHEET <u>12</u> OF <u>    </u>
NOTES <u>Cranin</u>	DRAWN <u>12/09/87</u>	
H.C. <u>Ripple</u>	DATE <u>5/21/87</u>	ROUTE <u>S.R. # 4</u>
R.C. <u>Geyman</u>	WEATHER <u>cloudy</u>	COUNTY <u>Seneca</u>
<u>Barbour</u>	TEMP. <u>75°</u>	TOWNSHIP <u>Reed</u>
		SECTION <u>13</u>
		<u>T 2 N R 17 E</u>

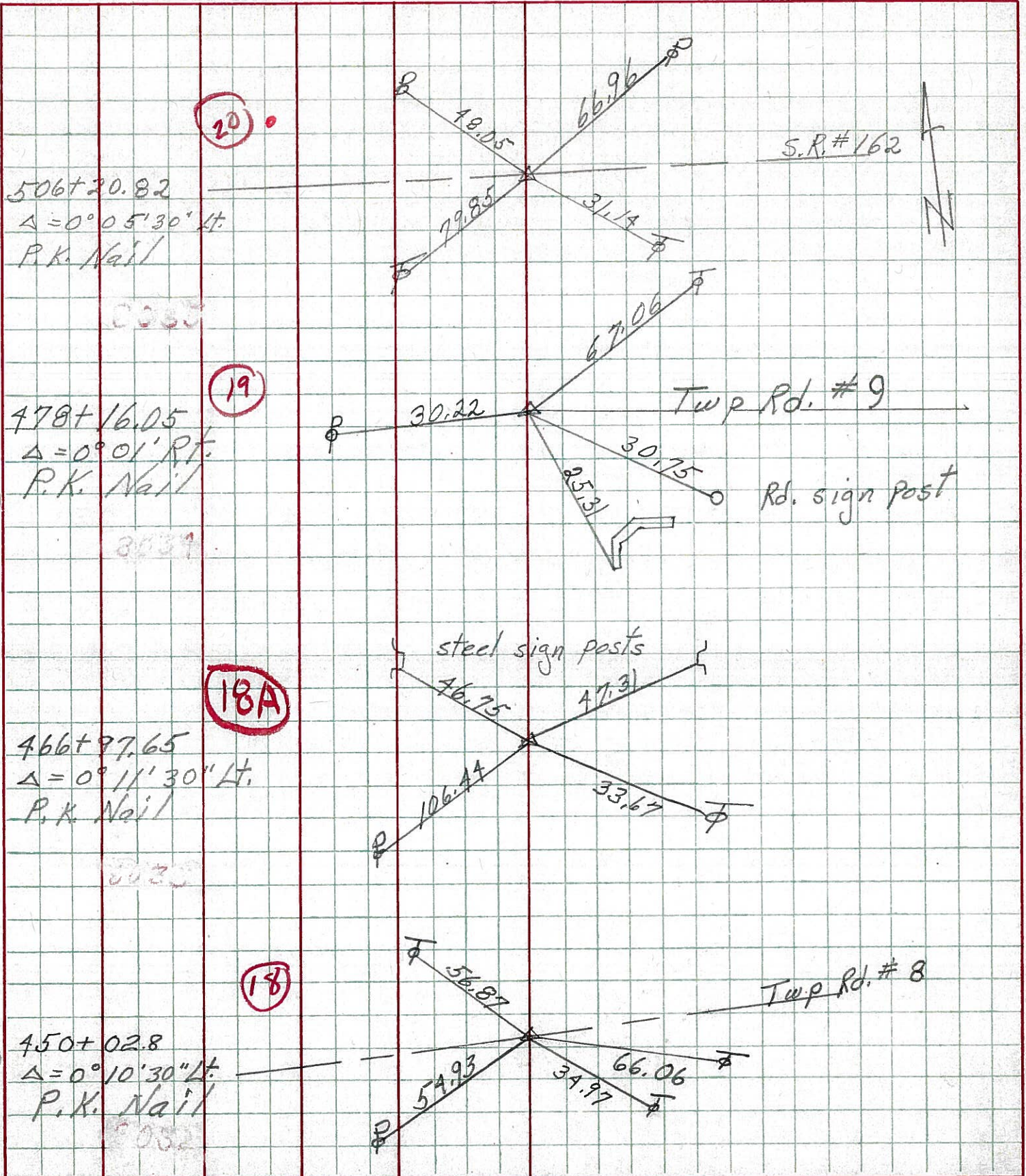
TYPE MONUMENT R.R. spike  
 ON SURFACE - BELOW 1 1/2" below  
 LEFT - ☉ PAV'T. - RIGHT ☉ Pav't  
 TO      EDGE PAVEMENT  
 S.L.M.     



PERSONNEL TITLE PERSONNEL TITLE  
 Schneider \_\_\_\_\_ Potts \_\_\_\_\_  
 Mosser \_\_\_\_\_  
 Barbour \_\_\_\_\_  
 Redding \_\_\_\_\_

COUNTY Seneca DATE 10-2-68  
 S. R. 4 WEATHER Cloudy-Windy  
 SEC. \_\_\_\_\_ TEMP. 75°

DESCRIPTION Ties for Control Points JOB NO. \_\_\_\_\_







PERSONNEL TITLE PERSONNEL TITLE

COUNTY Seneca

DATE

KraBill  
Kowaleski  
Brooks

S. R. 4

WEATHER

SEC.

TEMP.

DESCRIPTION

LEFT

CENTER LINE

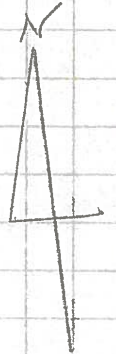
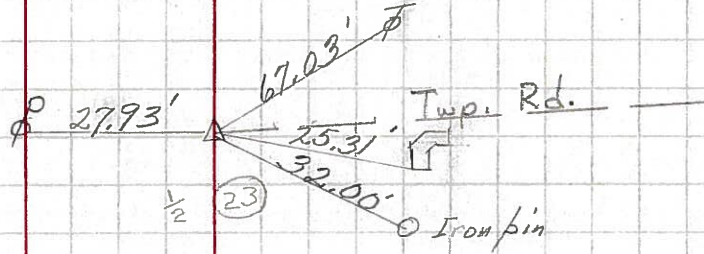
RIGHT

JOB NO.

478+16.05 #258  
P.I.  $\Delta=0^{\circ}01'00''$  RT  
P.k.nail

19

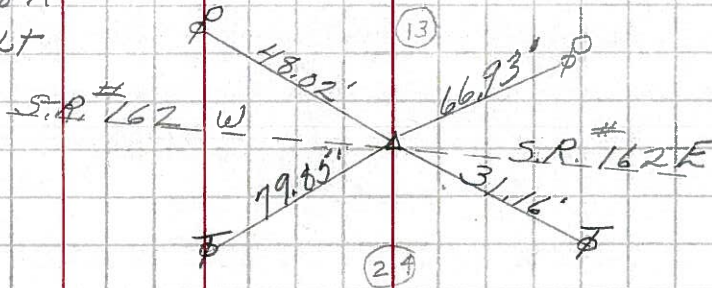
1-21-64



506+20.82 258 "A"  
P.I.  $\Delta=0^{\circ}05'30''$  LT  
P.k.nail

20

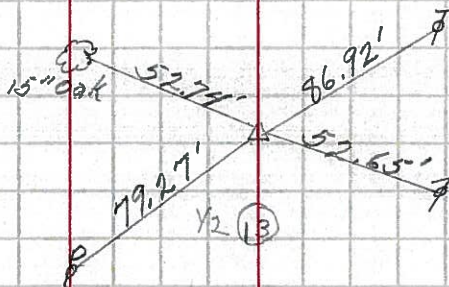
1-21-64



534+13.76 #259  
P.I.  $\Delta=0^{\circ}05'30''$  RT  
P.k.nail

21

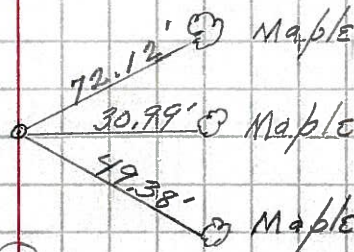
1-22-64



551+32.53 #259A  
P.O.T.  $\Delta 0^{\circ}00'00''$   
P.k.nail

21A

1-22-64



3/4 13