

O.D.O.T. DISTRICT 2 SURVEY OFFICE (USE ONLY)

PERSONNEL

REFERENCE NO. 21

SHEET 1 OF 15

NOTES LEU

DATE 6/1/15

ROUTE SR 4

H.C. O'DONNELL

WEATHER CLOUDY

COUNTY SENECA

R.C. RHOADES

TEMP. 50°

TOWNSHIP REED

DWG BY NASON PID 107060

SECTION 13

T 2 N R 17 E

TYPE MONUMENT P.K./WASHER

ON SURFACE - ~~BELOW~~ ON

OFFSET Q PAVEMENT ON LT : RT

.11' TO LT EDGE PAVEMENT

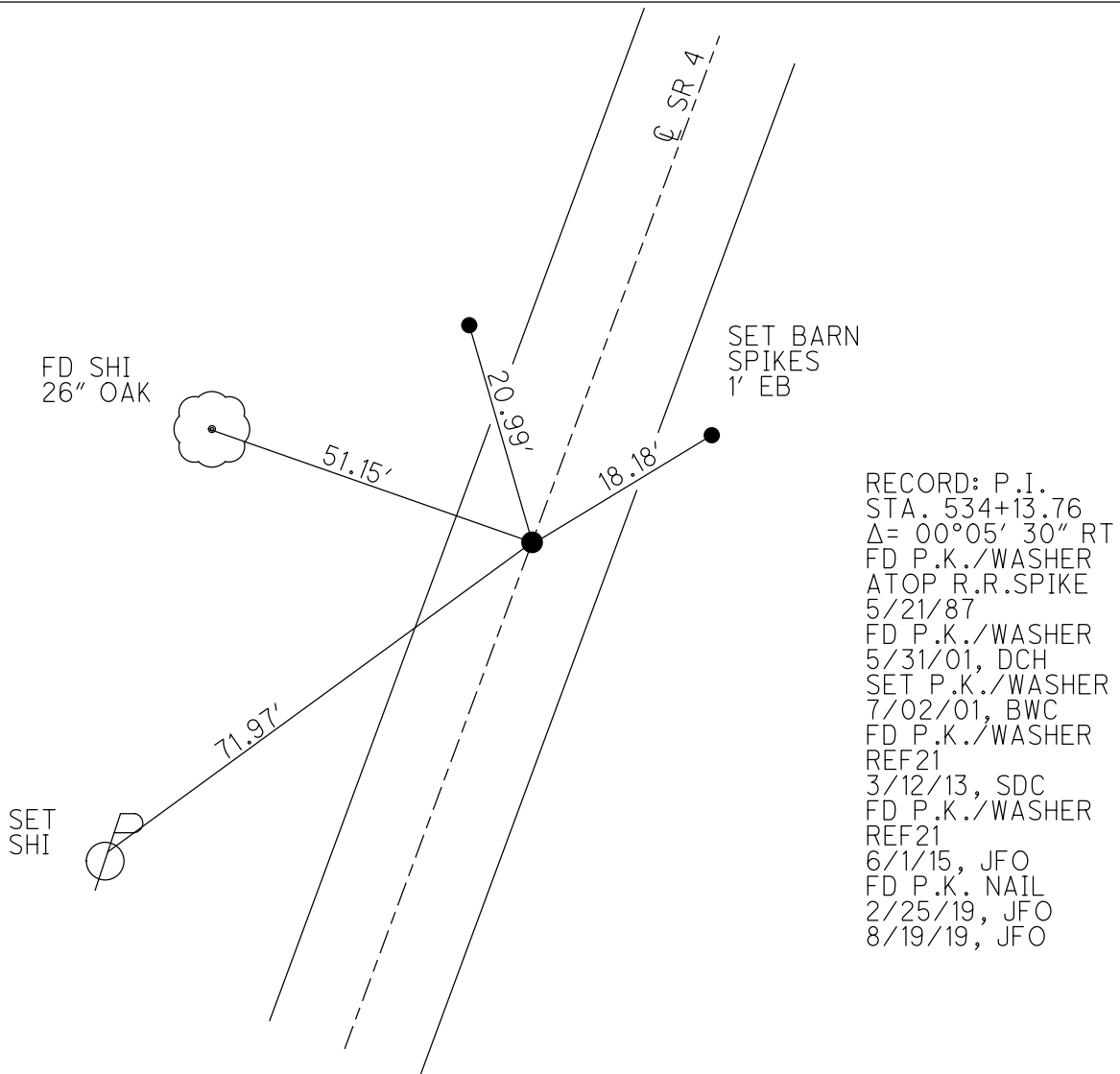
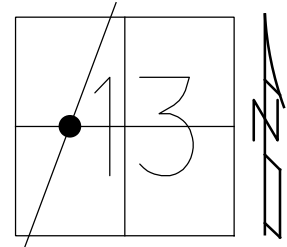
STATION: 535+32.78

HORZ.DATUM: NAD83 (2011)

GEOID: 2012A

GRID: NORTHING: 533899.834

EASTING: 1870345.349

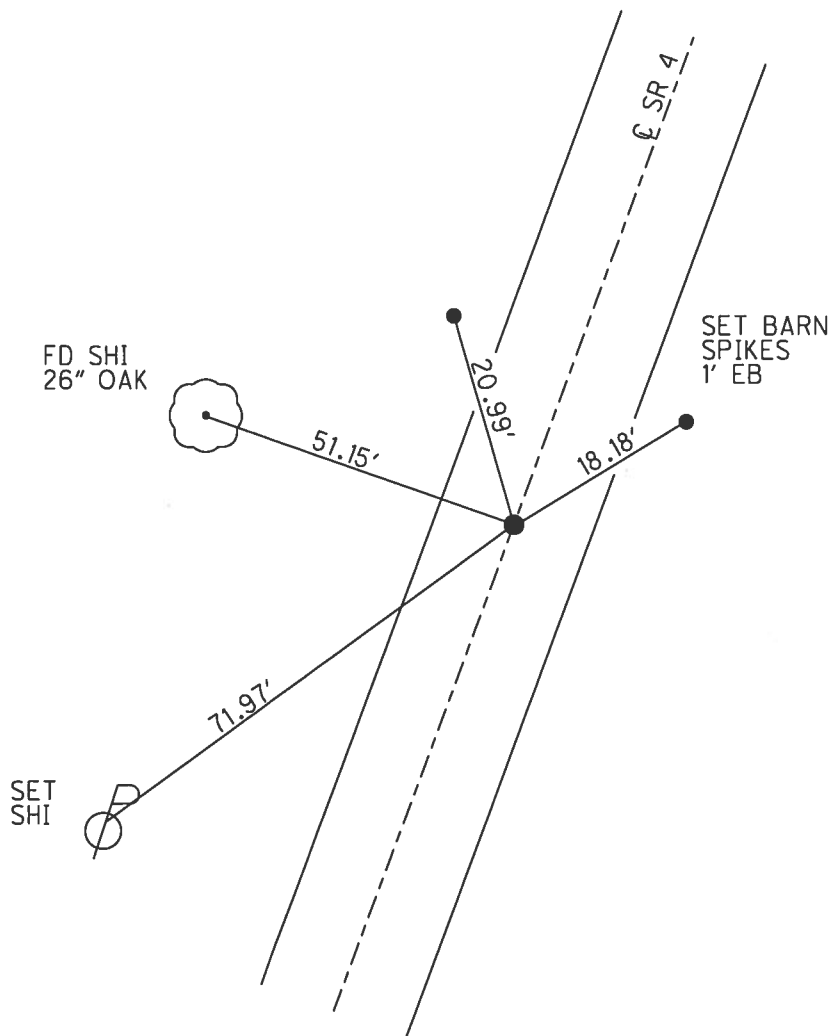
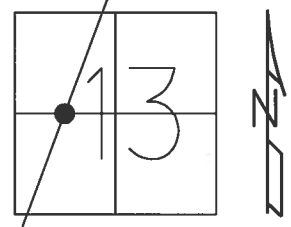


RECORD: P.I.
 STA. 534+13.76
 $\Delta = 00^{\circ}05'30''$ RT
 FD P.K./WASHER
 ATOP R.R.SPIKE
 5/21/87
 FD P.K./WASHER
 5/31/01, DCH
 SET P.K./WASHER
 7/02/01, BWC
 FD P.K./WASHER
 REF21
 3/12/13, SDC
 FD P.K./WASHER
 REF21
 6/1/15, JFO
 FD P.K. NAIL
 2/25/19, JFO
 8/19/19, JFO

O.D.O.T. DISTRICT 2 SURVEY OFFICE (USE ONLY)

PERSONNEL _____ REFERENCE NO. 21 SHEET 42 OF 56
 NOTES LEU DATE 6/1/15 ROUTE SR 4
 H.C. O'DONNELL WEATHER CLOUDY COUNTY SENECA
 R.C. FARKAS TEMP. 50° TOWNSHIP REED
RHOADES SECTION 13
 T 2 N R 17 E

TYPE MONUMENT P.K./WASHER
 ON SURFACE - ~~BELOW~~ ON
 LEFT - CL PAV'T - RIGHT ON
11' TO LT EDGE PAVEMENT
 S.L.M. 535+32.78
 GRID: NORTHING: 533899.834 EASTING: 1870345.349

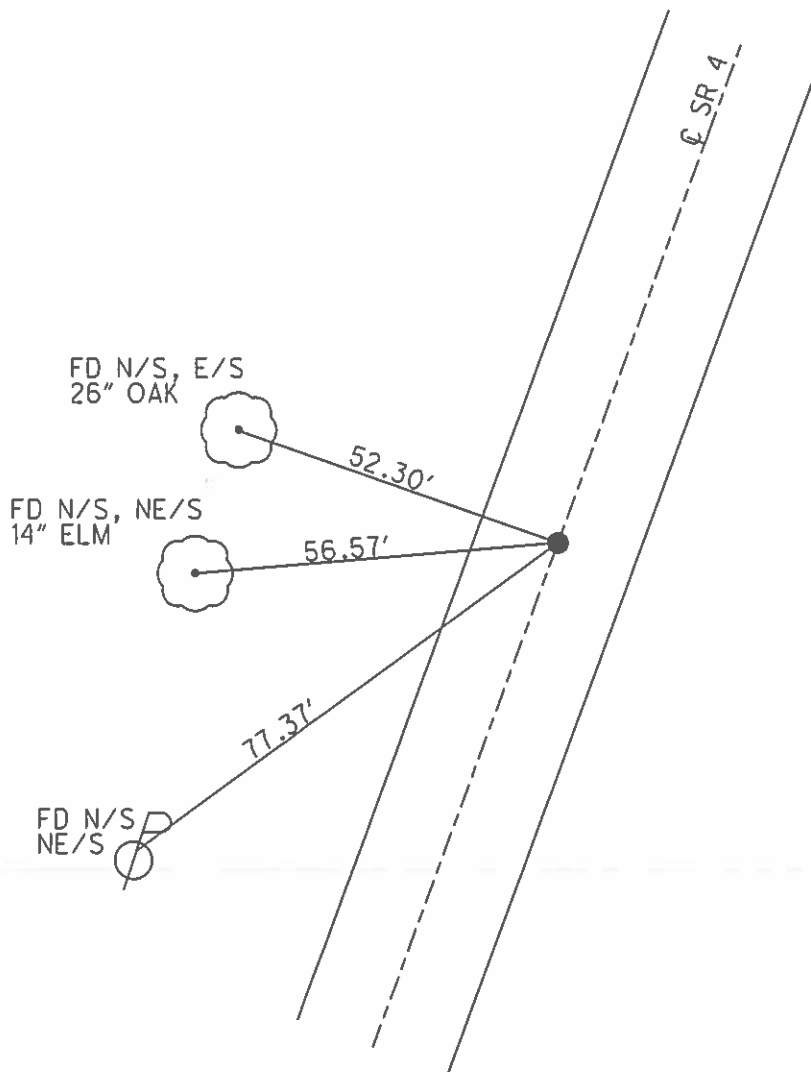
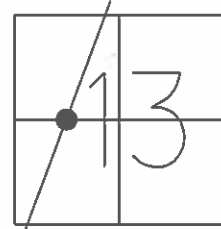


RECORD: P.I.
 STA. 534+13.76
 P.K./WASHER ATOP
 R.R. SPIKE
 5/21/87
 $\Delta = 00^{\circ}05' 30''$ RT
 FD P.K./WASHER
 5/31/01, DCH
 SET P.K./WASHER
 7/02/01, BWC
 FD P.K./WASHER
 REF21
 3/12/13, SDC
 FD P.K./WASHER
 REF21
 6/1/15, JFO

O.D.O.T. DISTRICT 2 SURVEY OFFICE (USE ONLY)

PERSONNEL _____ REFERENCE NO. 21 SHEET 42 OF 56
 NOTES CORDES DATE 5/31/01 ROUTE SR 4
 H.C. BROWN WEATHER SUNNY COUNTY SENECA
 R.C. HOMAN TEMP. 64° TOWNSHIP REED
 _____ SECTION 13
 _____ T 2 N R 17 E

TYPE MONUMENT P.K./WASHER
 ON SURFACE - ~~BELOW~~ ON
 LEFT - ☉ PAV'T - RIGHT ON
11' TO LT EDGE PAVEMENT
 S.L.M. 536+44
 GRID: NORTHING: _____ EASTING: _____

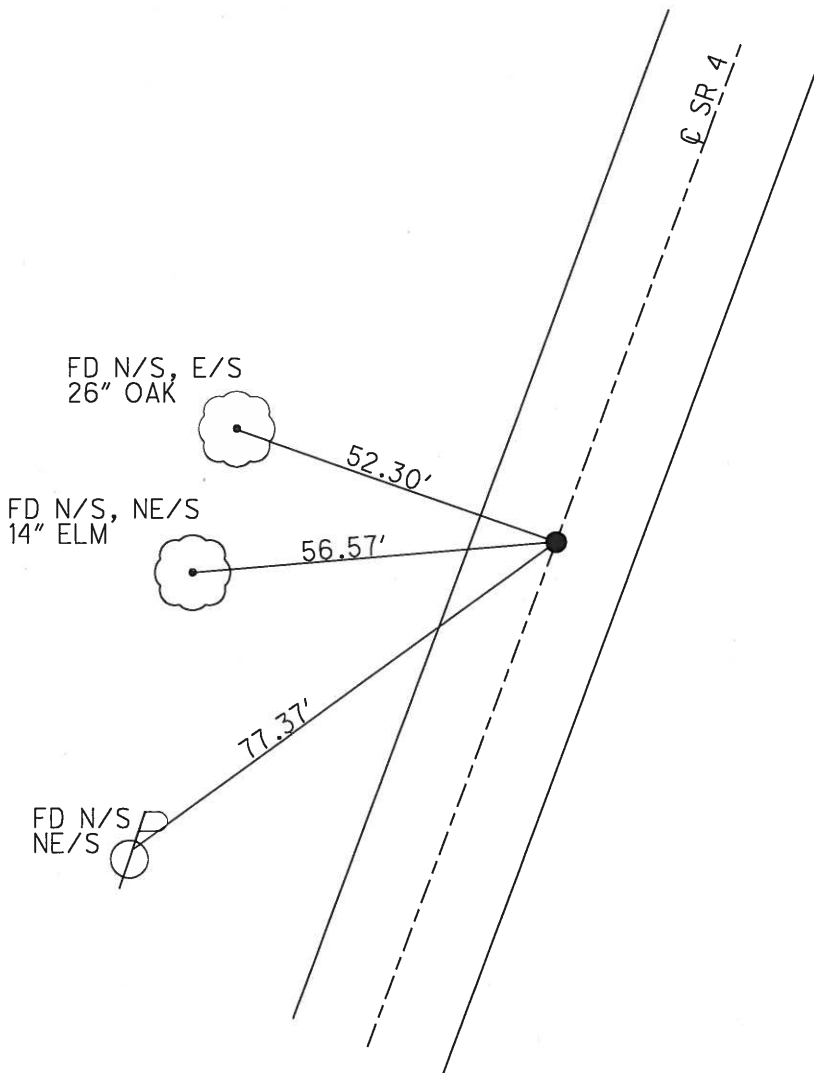
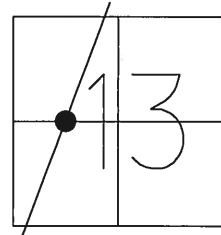


RECORD:
 STA. 534+13.76
 P.K./WASHER ATOP
 R.R.SPIKE, 5/21/87
 P.I. Δ = 00° 05' 30" RT
 SET P.K./WASHER
 7/02/01, BWC

O.D.O.T. DISTRICT 2 SURVEY OFFICE (USE ONLY)

PERSONNEL _____ REFERENCE NO. 21 SHEET 42 OF 56
 NOTES CORDES DATE 5/31/01 ROUTE SR 4
 H.C. BROWN WEATHER SUNNY COUNTY SENECA
 R.C. HOMAN TEMP. 64° TOWNSHIP REED
 _____ SECTION 13
 _____ T 2 N R 17 E

TYPE MONUMENT P.K./WASHER
 ON SURFACE - ~~BELOW~~ ON
 LEFT - ☉ PAV'T - RIGHT ON
11' TO LT EDGE PAVEMENT
 S.L.M. 536+44
 GRID: NORTHING: _____ EASTING: _____



RECORD:
 STA. 534+13.76
 P.K./WASHER ATOP
 R.R.SPIKE, 5/21/87
 P.I. Δ = 00° 05' 30" RT
 SET P.K./WASHER
 7/02/01, BWC

O.D.O.T. DISTRICT 2 SURVEY OFFICE

PERSONNEL

REFERENCE NO. 21

SHEET 7 OF 19

NOTES Cordes

H.C. Brown

R.C. Homan

DATE 5-31-01

WEATHER Sunny

TEMP. 64°

ROUTE 4

COUNTY Seneca

TOWNSHIP Reed

SECTION 13

T2 N R 17 E

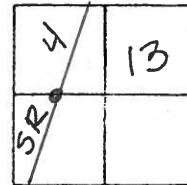
TYPE MONUMENT PK/Washer

ON SURFACE - ~~BELOW~~ on

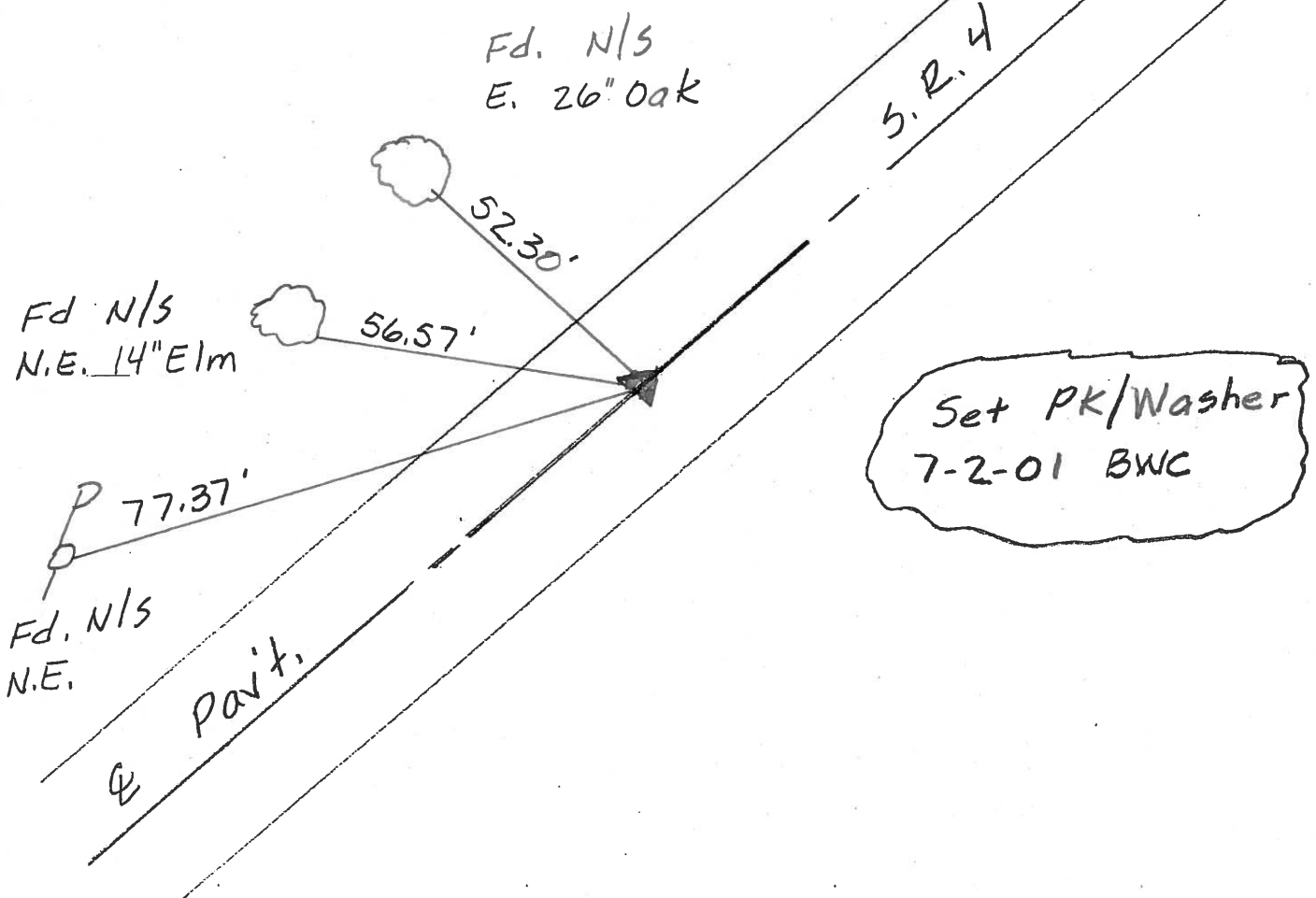
~~LEFT - & PAV'T. - RIGHT~~ on

11' TO L EDGE PAVEMENT

S.L.M. 536 + 44



Record: 5-21-1987
 Sta. 534 + 13.76
 PK/Washer Atop RR Spk
 P.I. $\Delta = 00^{\circ}05'30''$ Rt



O.D.O.T. DISTRICT 2 SURVEY OFFICE

PERSONNEL

REFERENCE NO. 21

SHEET 38 OF 50

NOTES CHENEY

H.C. RIPPLE

DATE 7-27-1993

ROUTE #4

R.C. BARBOUR

WEATHER FAIR

COUNTY SENECA

GEYMAN

TEMP. 85°

TOWNSHIP REED

SECTION 13

T2N R17E

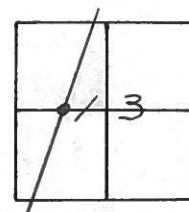
TYPE MONUMENT R.R. SPK.

~~ON~~ SURFACE - BELOW 2" BELOW

~~LEFT~~ - C. PAV'T. - ~~RIGHT~~ ON

11' TO LT. EDGE PAVEMENT

S.L.M. 536+44



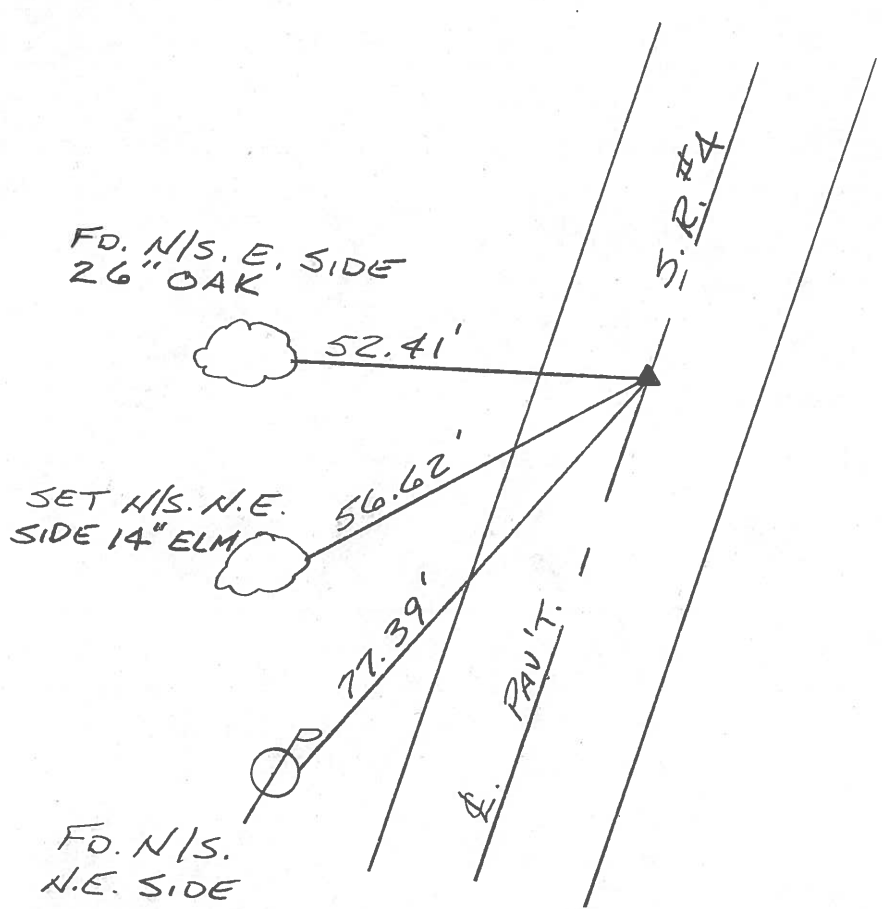
RECORD: 5-21-1987

P.I. STA. 534+13.76

$\Delta = 00^{\circ}05'30''$ RT.

R.R. SPK. 6.75" BELOW SURFACE

SET PK/WASHER
10-13-1993
RCC



FD. N/S. E. SIDE
26" OAK

52.41'

SET N/S. N.E.
SIDE 14" ELM

56.62'

77.39'

FD. N/S.
N.E. SIDE

S.R.#4

C. PAV'T.

O.D.O.T. DISTRICT 2 SURVEY OFFICE

PERSONNEL _____

REFERENCE NO. _____

SHEET 13 OF _____

NOTES Cronin _____

DRAWN 12/09/87

H.C. Ripple _____

DATE 5/21/87

ROUTE S.R.#4

R.C. Barbour _____

WEATHER sunny

COUNTY Seneca

Geyman _____

TEMP. 72°

TOWNSHIP Reed

SECTION 13

T2 N R 17 E

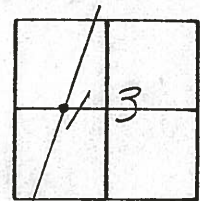
TYPE MONUMENT R.R. spike
ON SURFACE - BELOW 2" below surface

LEFT- & PAV'T. - RIGHT & Pav't

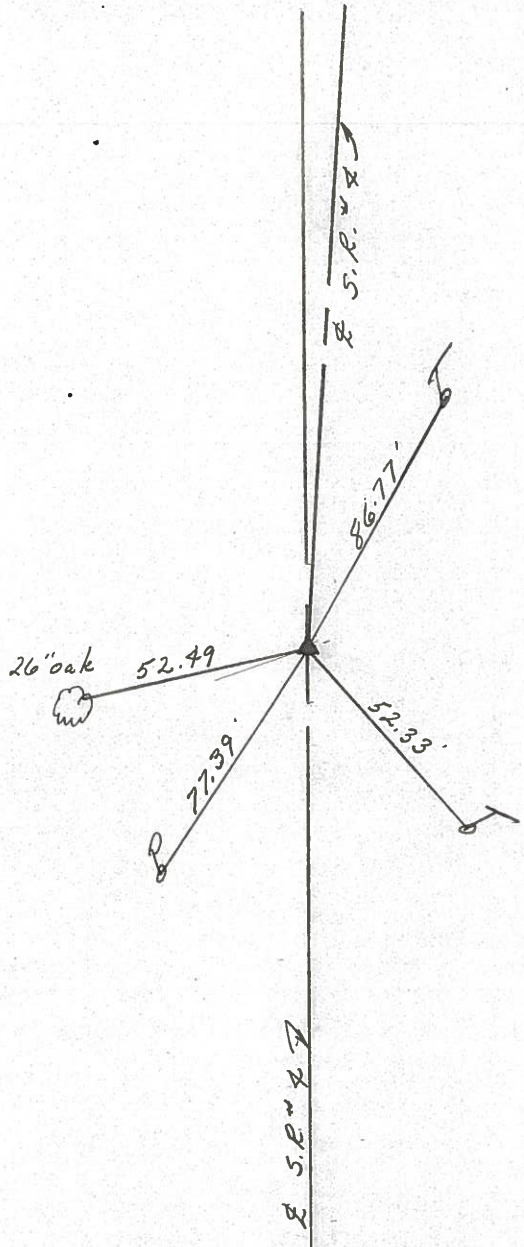
TO _____ EDGE PAVEMENT

S.L.M. _____

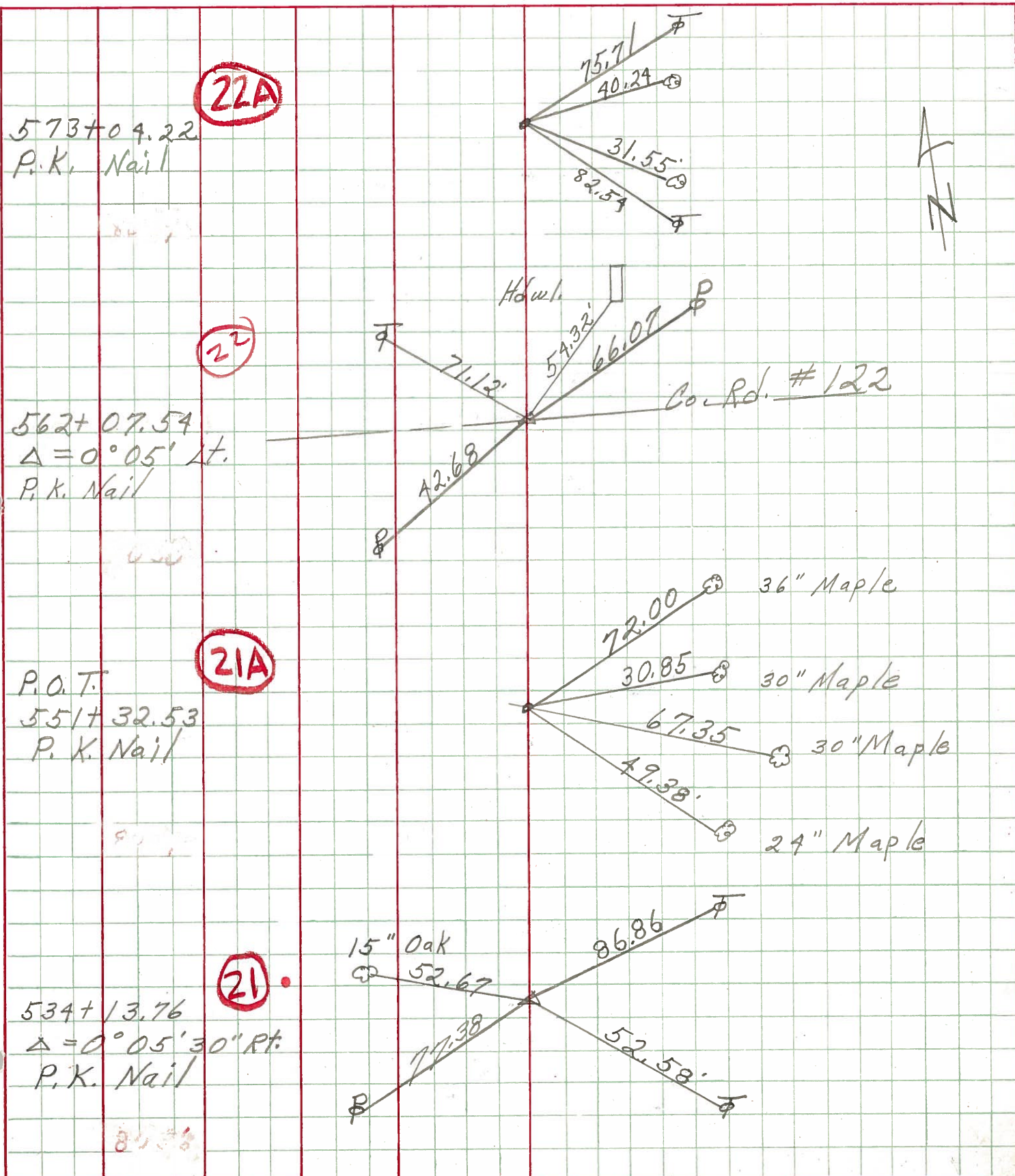
21



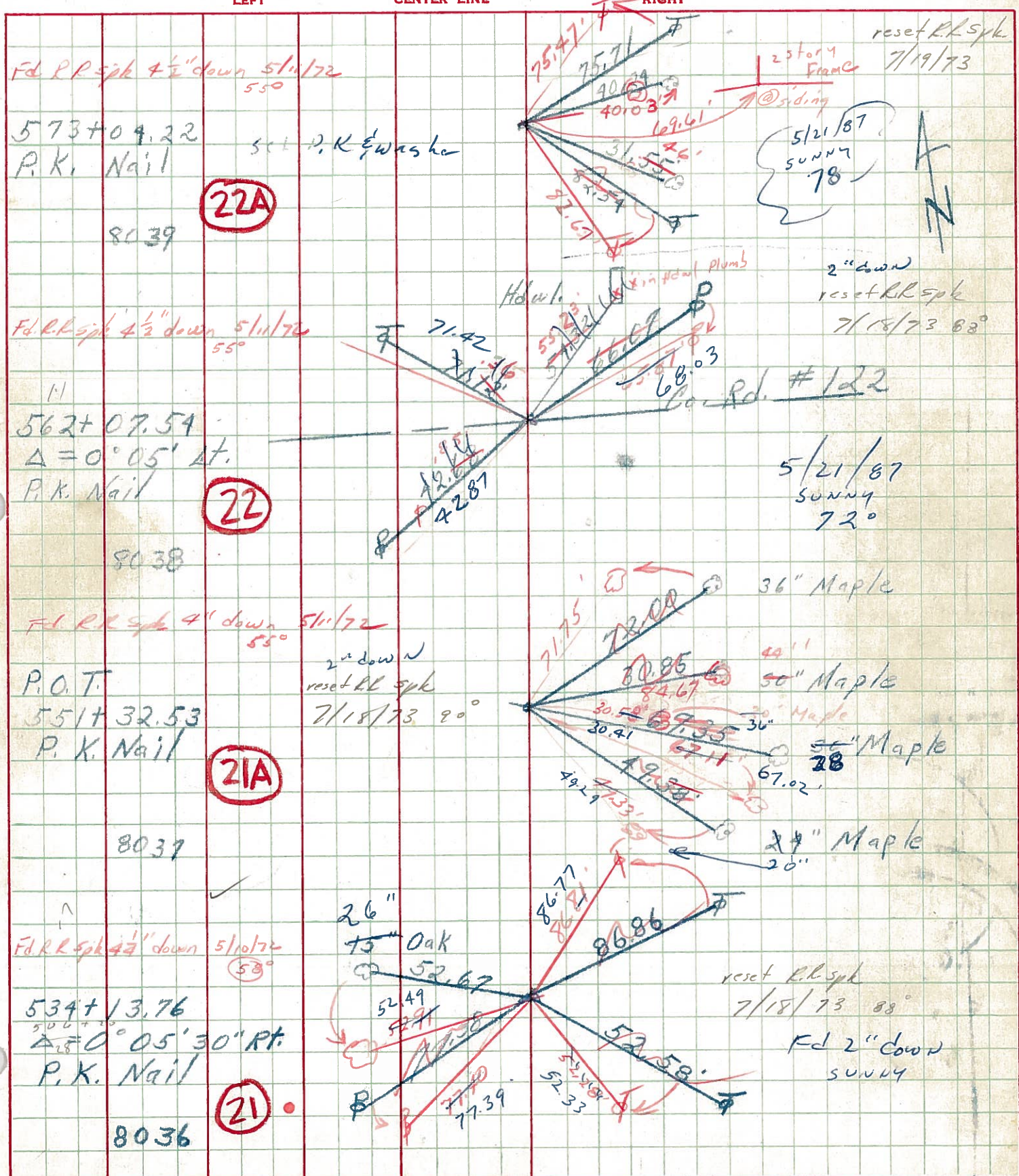
$\Delta = 00^{\circ} 05' 30''$ Lt.
534+13.76
R.R. spike $6\frac{3}{4}''$
below surface



PERSONNEL	TITLE	PERSONNEL	TITLE	COUNTY	Seneca	DATE	10-2-68
Schneider		Potts		S. R.	4	WEATHER	Cloudy-Windy
Mosser				SEC.		TEMP.	75°
Barbour				DESCRIPTION <u>Ties for Control Points</u>			
Redding				LEFT	CENTER LINE	RIGHT	JOB NO.



PERSONNEL TITLE PERSONNEL TITLE COUNTY Seneca DATE 10-2-68
Schneider Potts
Mosser S. R. 4 WEATHER Cloudy-Windy
Barbour SEC. _____ TEMP. 75
Redding DESCRIPTION Ties for Control Points JOB NO. _____



PERSONNEL	TITLE	PERSONNEL	TITLE	COUNTY	DATE
KraBill				Seneca	
Kowaleski				S. R. 4	WEATHER
Brooks				SEC.	TEMP.

DESCRIPTION	LEFT	CENTER LINE	RIGHT	JOB NO.
-------------	------	-------------	-------	---------

