

O.D.O.T. DISTRICT 2 SURVEY OFFICE (USE ONLY)

PERSONNEL

REFERENCE NO. 21 A

SHEET 43 OF 56

NOTES CORDES

DATE 5/31/01

ROUTE SR 4

H.C. BROWN

WEATHER SUNNY

COUNTY SENECA

R.C. HOMAN

TEMP. 66°

TOWNSHIP REED

SECTION 13

DWG BY NASON

PID PAVETRAIN

T 2 N R 17 E

TYPE MONUMENT P.K./ WASHER

ON SURFACE - ~~BELOW~~ ON

OFFSET  $\varnothing$  PAVEMENT ON LT : RT

11' TO RT EDGE PAVEMENT

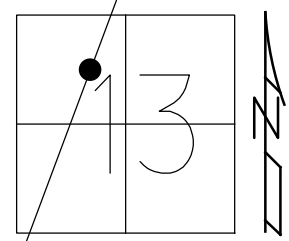
STATION: 552+50.95

HORIZ.DATUM: NAD83 (2011)

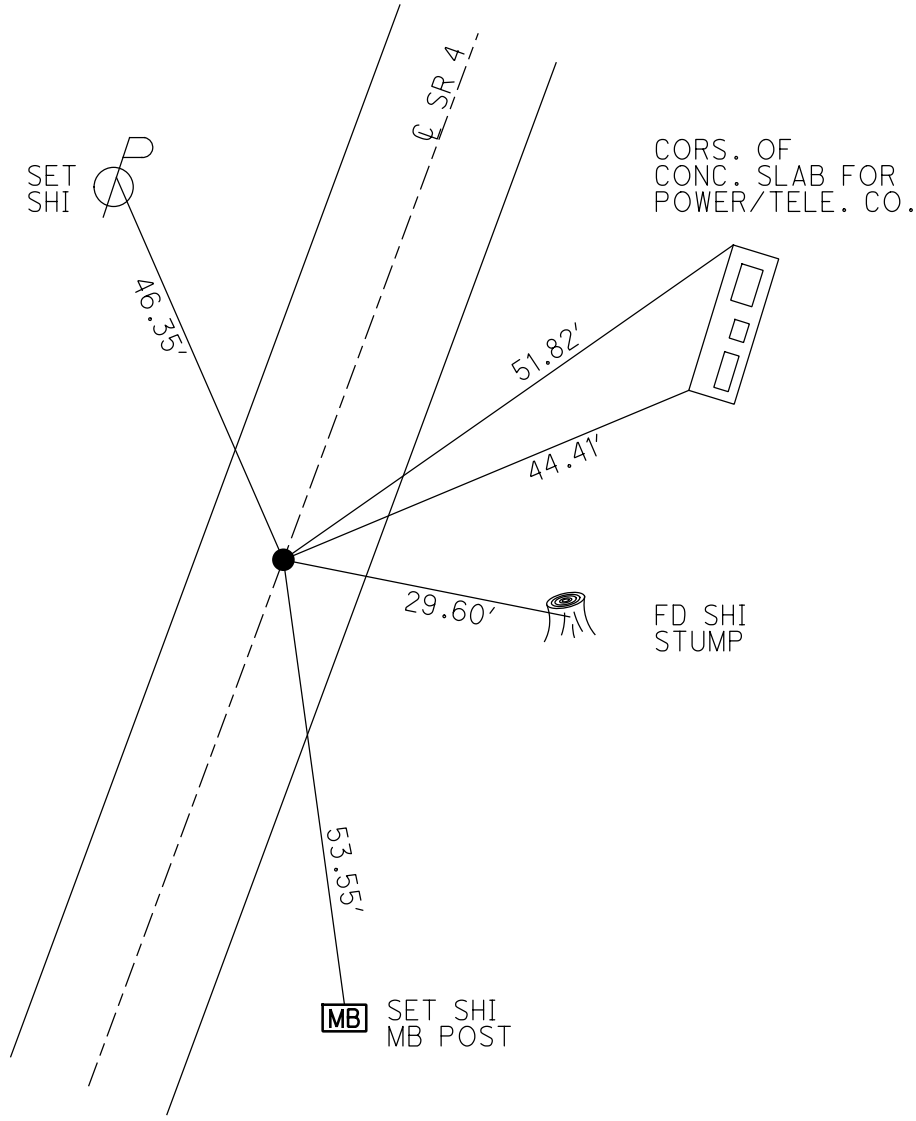
GEOID: 2012A

GRID: NORTHING: 535520.020

EASTING: 1870917.496



RECORD:  
 STA. 551+32.53  
 FD P.K./WASHER  
 ATOP R.R.SPIKE  
 5/21/87  
 FD P.K./WASHER  
 5/31/01, DCH  
 SET P.K./WASHER  
 7/02/01, BWC  
 FD P.K./WASHER  
 REFA21  
 3/12/13, SDC  
 FD P.K./WASHER  
 REFA21  
 2/25/19, JFO  
 8/19/19, JFO  
 1/20/23, JMR



O.D.O.T. DISTRICT 2 SURVEY OFFICE (USE ONLY)

PERSONNEL

REFERENCE NO. 21 A

SHEET 2 OF 15

NOTES CORDES

DATE 5/31/01

ROUTE SR 4

H.C. BROWN

WEATHER SUNNY

COUNTY SENECA

R.C. HOMAN

TEMP. 66°

TOWNSHIP REED

SECTION 13

DWG BY NASON

PID 107060

T 2 N R 17 E

TYPE MONUMENT P.K./ WASHER

ON SURFACE - ~~BELOW~~ ON

OFFSET Q PAVEMENT ON LT : RT

11' TO RT EDGE PAVEMENT

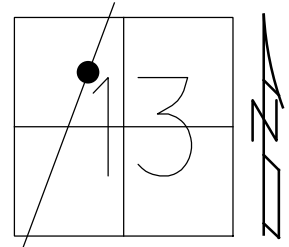
STATION: 552+50.95

HORZ.DATUM: NAD83 (2011)

GEOID: 2012A

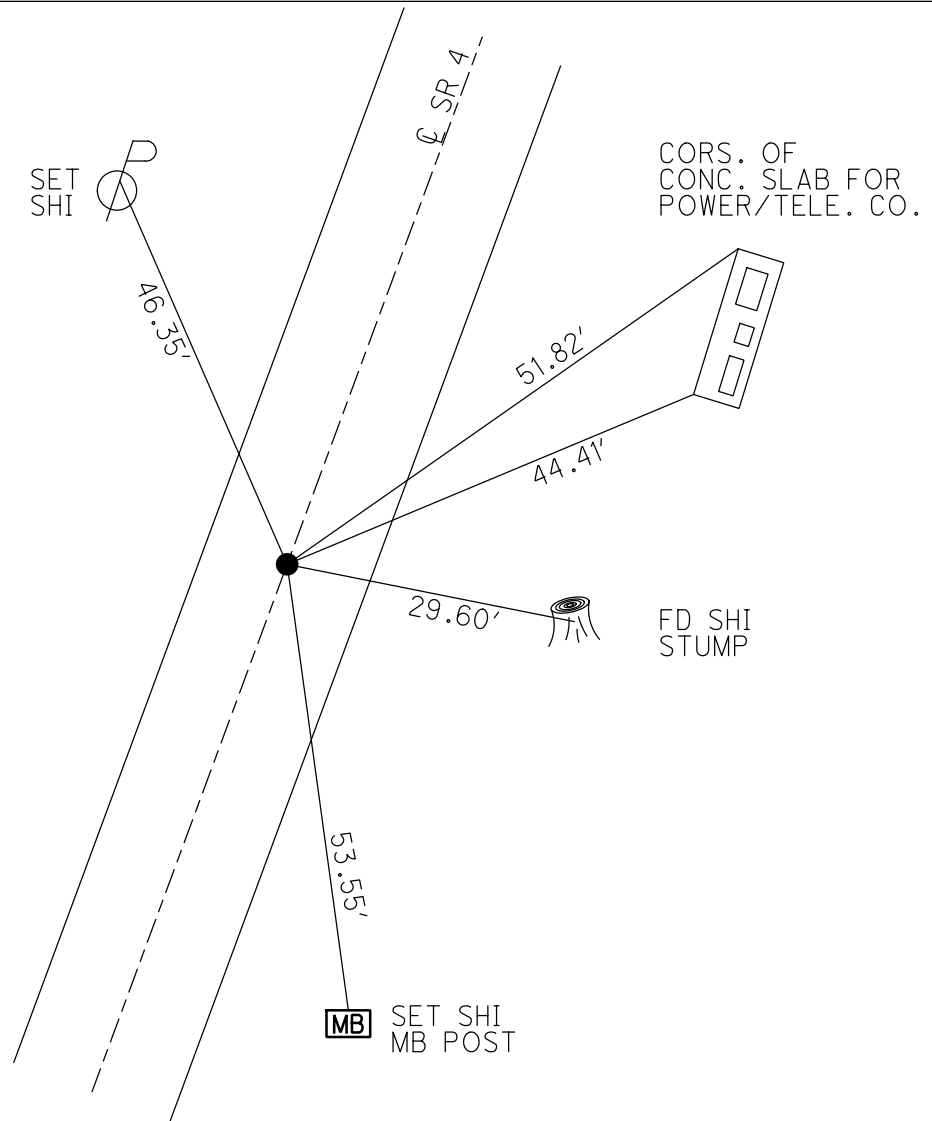
GRID: NORTHING: 535520.020

EASTING: 1870917.496



RECORD:

STA. 551+32.53  
 FD P.K./WASHER  
 ATOP R.R.SPIKE  
 5/21/87  
 FD P.K./WASHER  
 5/31/01, DCH  
 SET P.K./WASHER  
 7/02/01, BWC  
 FD P.K./WASHER  
 REFA21  
 3/12/13, SDC  
 FD P.K./WASHER  
 REFA21  
 2/25/19, JFO  
 8/19/19, JFO

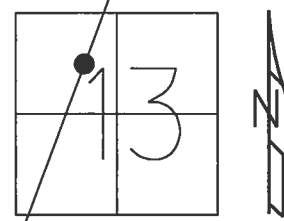


O.D.O.T. DISTRICT 2 SURVEY OFFICE (USE ONLY)

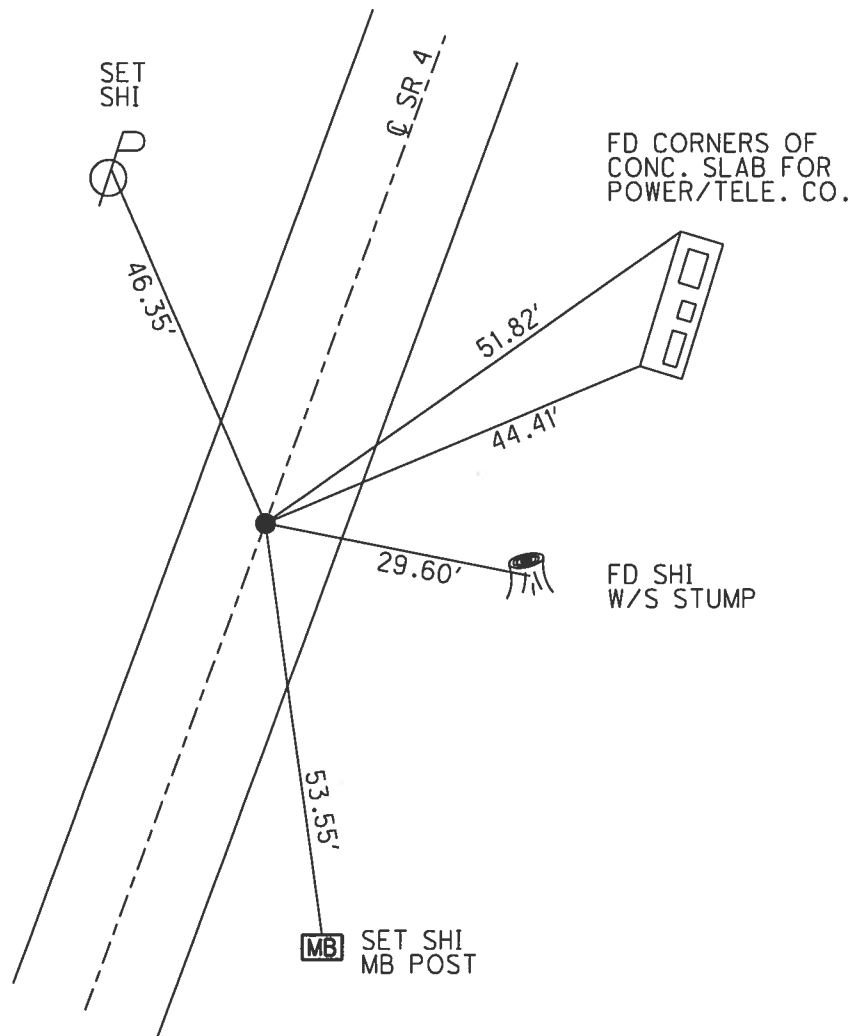
PERSONNEL \_\_\_\_\_ REFERENCE NO. 21 A SHEET 43 OF 56  
 NOTES CORDES DATE 5/31/01 ROUTE SR 4  
 H.C. BROWN WEATHER SUNNY COUNTY SENECA  
 R.C. HOMAN TEMP. 66° TOWNSHIP REED  
 \_\_\_\_\_ SECTION 13  
 \_\_\_\_\_ T 2 N R 17 E

TYPE MONUMENT P.K./WASHER  
 ON SURFACE - ~~BELOW~~ ON  
 LEFT - Q PAV'T - RIGHT ON  
11' TO RT EDGE PAVEMENT  
 S.L.M. 552+50.95

GRID: NORTHING: 535519.986 EASTING: 1870917.414



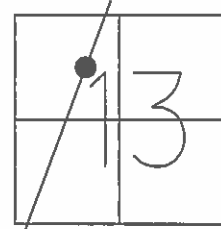
RECORD:  
 STA. 551+32.53  
 P.K./WASHER ATOP  
 R.R.SPIKE, 5/21/87  
 FD P.K./WASHER  
 5/31/01, DCH  
 SET P.K./WASHER  
 7/02/01, BWC  
 FD P.K./WASHER  
 REFA21  
 3/12/13, SDC



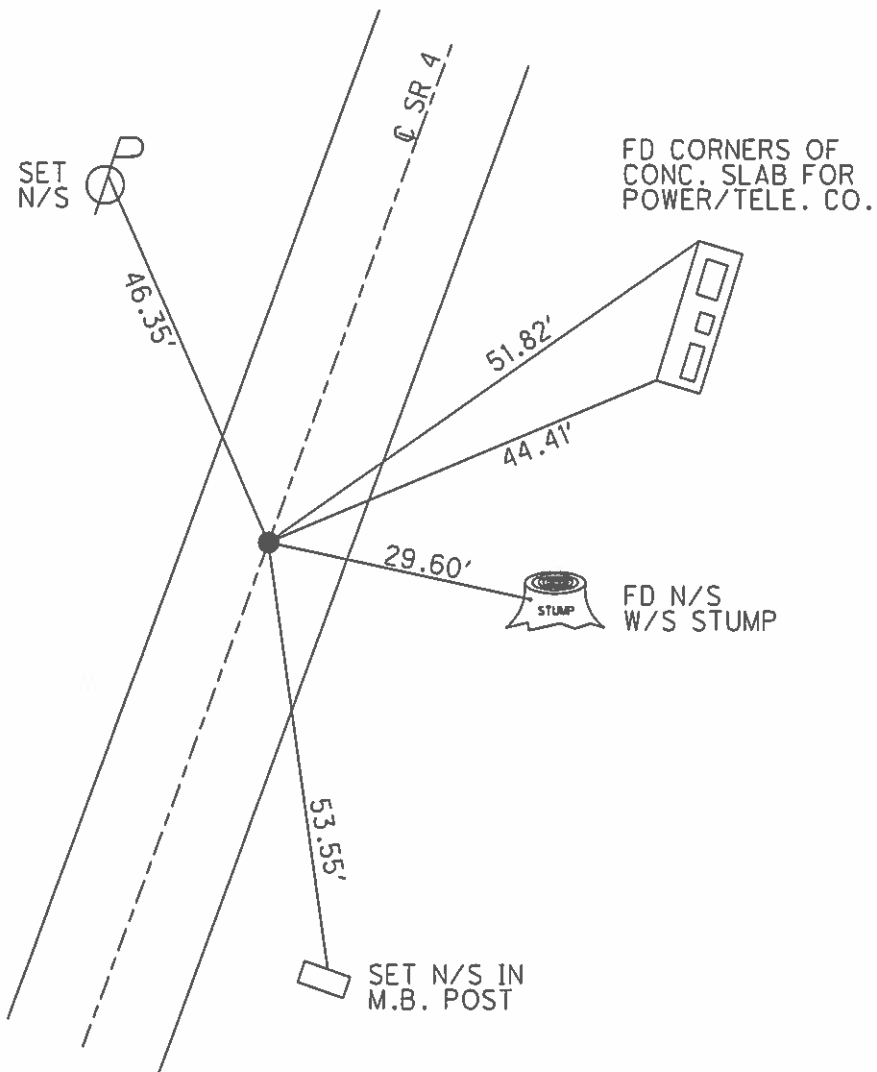
**O.D.O.T. DISTRICT 2 SURVEY OFFICE (USE ONLY)**

PERSONNEL \_\_\_\_\_ REFERENCE NO. 21 A SHEET 43 OF 56  
 NOTES CORDES DATE 5/31/01 ROUTE SR 4  
 H.C. BROWN WEATHER SUNNY COUNTY SENECA  
 R.C. HOMAN TEMP. 66° TOWNSHIP REED  
 SECTION 13  
 T 2 N R 17 E

TYPE MONUMENT P.K./WASHER  
 ON SURFACE - ~~BELOW~~ ON  
 LEFT - Q PAV'T - RIGHT ON  
11' TO RT EDGE PAVEMENT  
 S.L.M. 553+67  
 GRID: NORTHING: \_\_\_\_\_ EASTING: \_\_\_\_\_



RECORD:  
 STA. 551+32.53  
 P.K./WASHER ATOP  
 R.R.SPIKE, 5/21/87  
 SET P.K./WASHER  
 7/02/01, BWC



O.D.O.T. DISTRICT 2 SURVEY OFFICE

PERSONNEL

REFERENCE NO. 21-A

SHEET 8 OF 19

NOTES Cordes

H.C. Brown

R.C. Homan

DATE 5-31-01

WEATHER Sunny

TEMP. 66°

ROUTE 4

COUNTY Seneca

TOWNSHIP Reed

SECTION 13

T2 N R 17 E

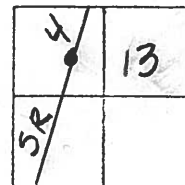
TYPE MONUMENT PK/Washer

ON SURFACE - ~~BELOW~~ On

~~EAST - & PAV'T. - RIGHT~~ On

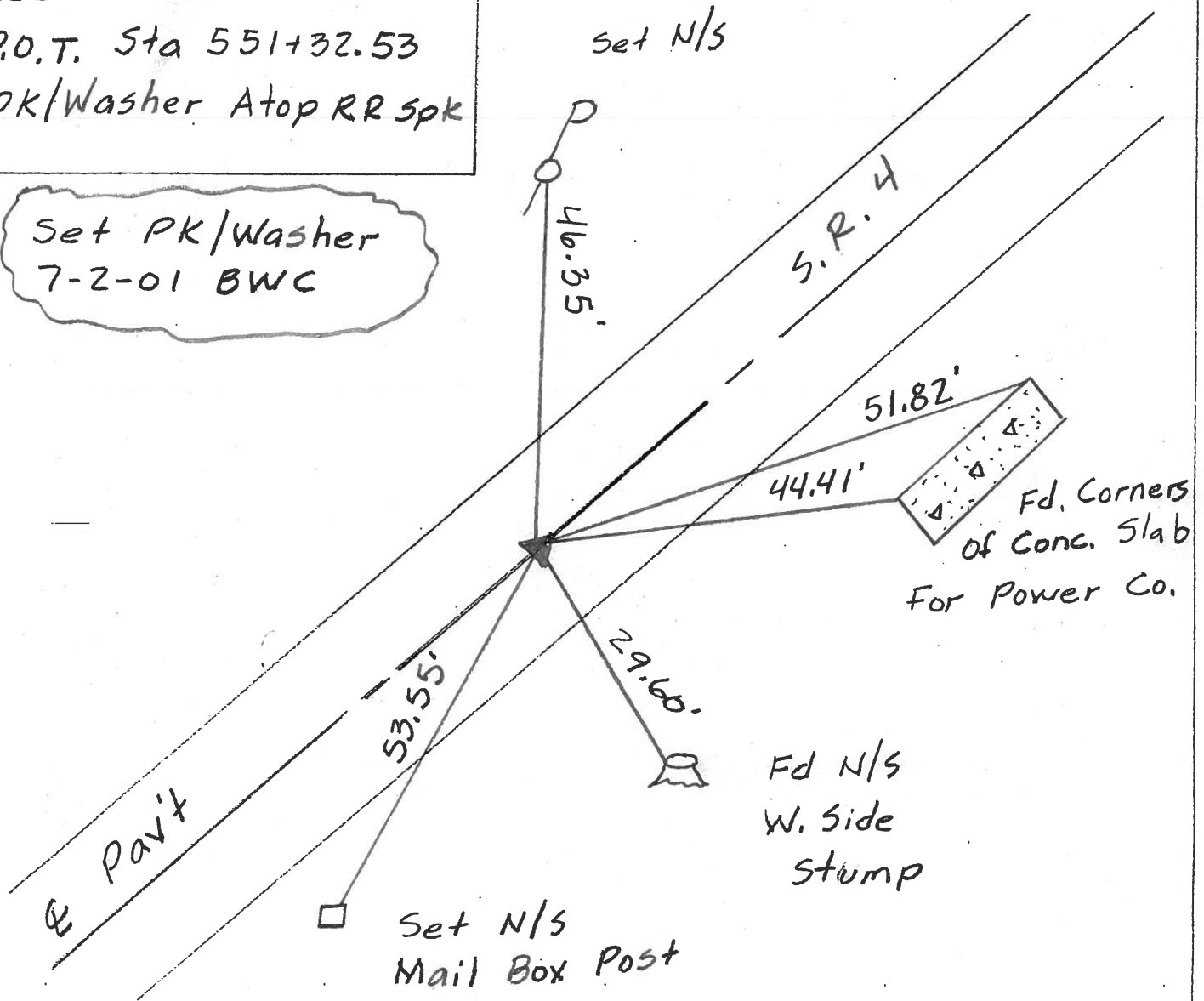
11' TO R+ EDGE PAVEMENT

S.L.M. 553+67



Record: 5-21-1987  
 P.O.T. Sta 551+32.53  
 PK/Washer Atop RR Spk

Set PK/Washer  
 7-2-01 BWC



O.D.O.T. DISTRICT 2 SURVEY OFFICE

PERSONNEL

REFERENCE NO. 21-A

SHEET 39 OF 50

NOTES CHENEY

H.C. RIPPLE

DATE 7-27-1993

ROUTE #4

R.C. BARBOUR

WEATHER FAIR

COUNTY SENECA

GEYMAN

TEMP. 85°

TOWNSHIP REED

SECTION 13

T2N R17E

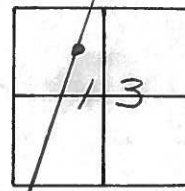
TYPE MONUMENT R.R. SPK.

~~ON~~ SURFACE - BELOW 2" BELOW

~~LEFT~~ - Q PAV'T. - ~~RIGHT~~ ON

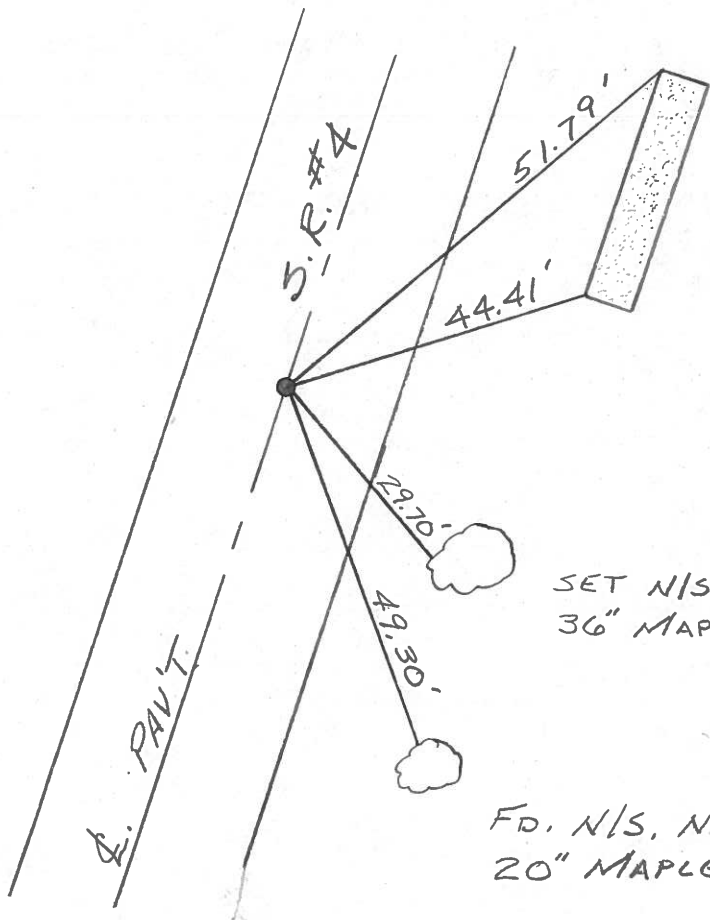
11' TO R.T. EDGE PAVEMENT

S.L.M. 553+67



RECORD: 5-21-1987  
 P.O.T. STA. 551+32.53  
 R.R. SPK. 6.5" BELOW  
 SURFACE

SET PK/WASHER  
 10-13-1993  
 R.C.C



USED  
 CORNERS OF  
 CONC. SLAB  
 FOR POWER  
 COMPANY.

SET N/S, W. SIDE  
 36" MAPLE

FD. N/S, N.W. SIDE  
 20" MAPLE

# O.D.O.T. DISTRICT 2 SURVEY OFFICE

PERSONNEL \_\_\_\_\_

REFERENCE NO. \_\_\_\_\_

SHEET 14 OF \_\_\_\_\_

NOTES CEOWN

DRAWN 12/09/87

H.C. Ripple

DATE 5/21/87

R.C. Barbour

WEATHER sunny

Geyman

TEMP. 72°

ROUTE S.R.#4

COUNTY Seneca

TOWNSHIP Reed

SECTION 13

T2 N R 17 E

TYPE MONUMENT R.R. spike

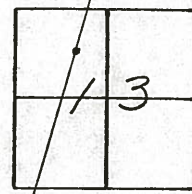
ON SURFACE - BELOW 2" below

LEFT - ☉ PAV'T. - RIGHT ☉ Pav't.

TO \_\_\_\_\_ EDGE PAVEMENT

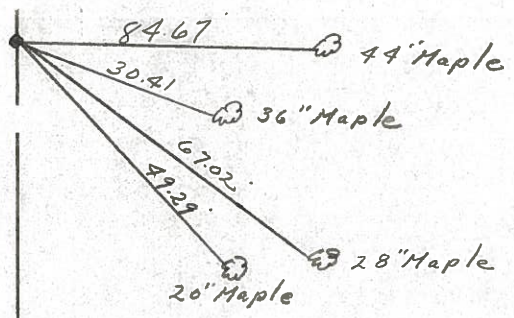
S.L.M. \_\_\_\_\_

21A



S.R.#4

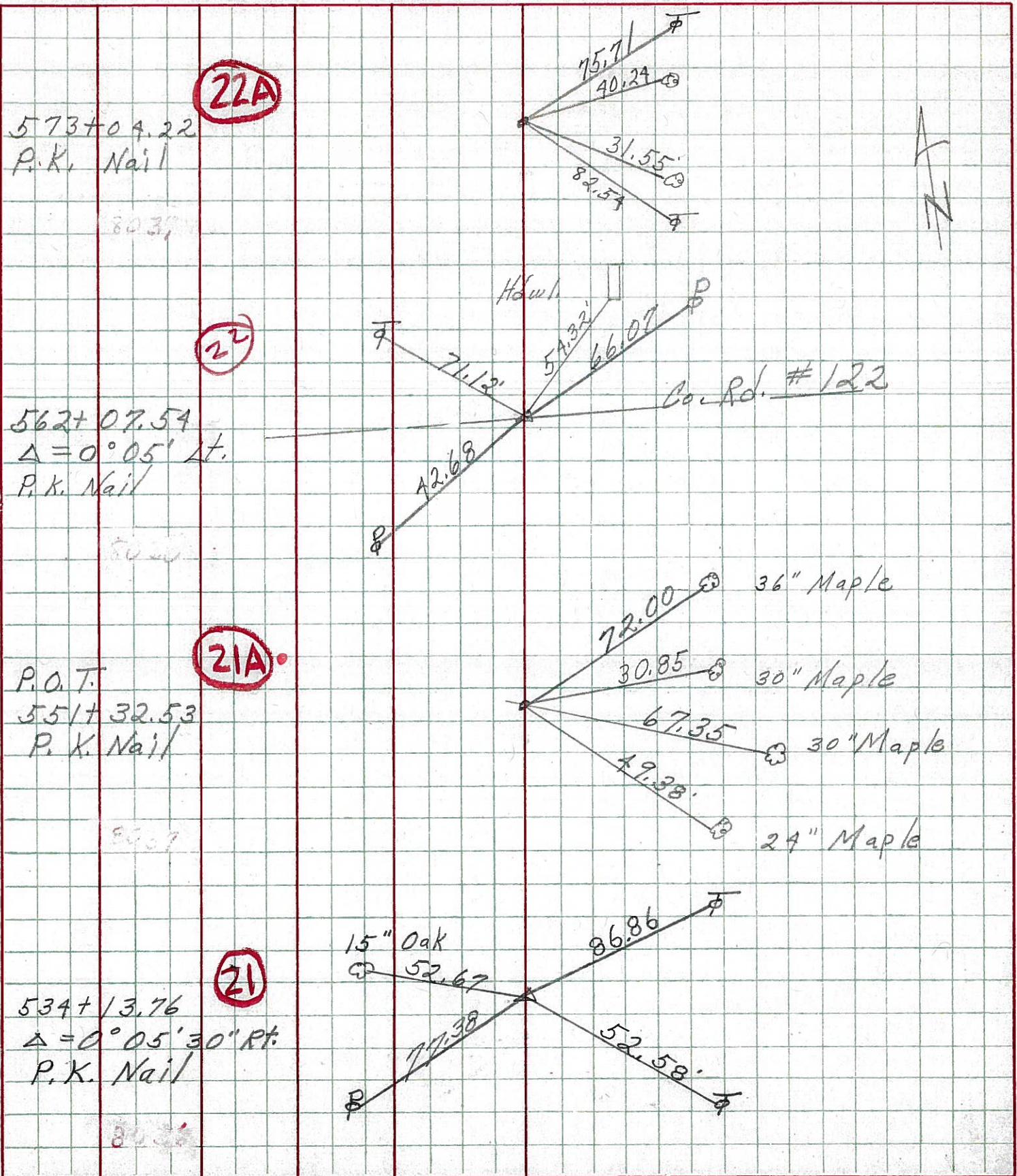
P.O.T  
551432.53  
R.R. spike @ 1/2"  
below surface



PERSONNEL TITLE PERSONNEL TITLE  
 Schneider \_\_\_\_\_ Potts \_\_\_\_\_  
 Mosser \_\_\_\_\_  
 Barbour \_\_\_\_\_  
 Redding \_\_\_\_\_

COUNTY Seneca DATE 10-2-68  
 S. R. 4 WEATHER Cloudy-Windy  
 SEC. \_\_\_\_\_ TEMP. 75°

DESCRIPTION Ties for Control Points LEFT CENTER LINE RIGHT JOB NO. \_\_\_\_\_







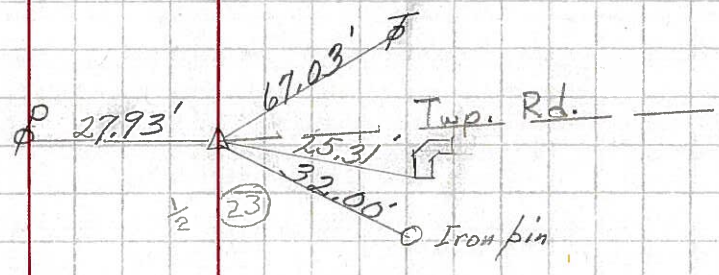
PERSONNEL	TITLE	PERSONNEL	TITLE	COUNTY	DATE
KraBill				Seneca	
Kowaleski				S. R. 4	WEATHER
Brooks				SEC.	TEMP.

DESCRIPTION LEFT CENTER LINE RIGHT JOB NO.

478+16.05 #258  
 P.I.  $\Delta = 0^{\circ}01'00''$  RT  
 P.k. nail

(19)

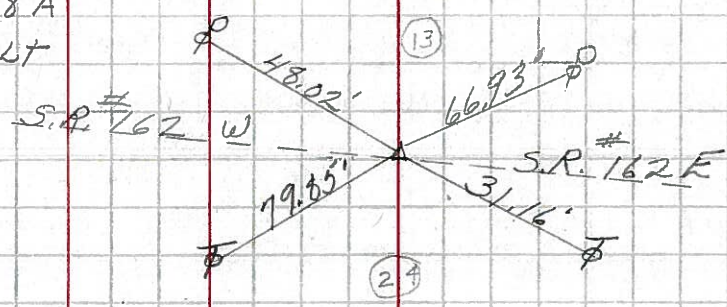
1-21-64



506+20.82 258" A  
 P.I.  $\Delta = 0^{\circ}05'30''$  LT  
 P.k. nail

(20)

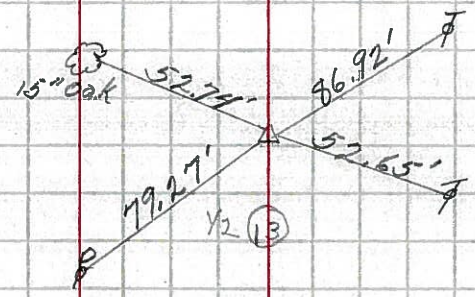
1-21-64



534+13.76 #259  
 P.I.  $\Delta = 0^{\circ}05'30''$  RT  
 P.k. nail

(21)

1-22-64



551+32.53 #259A  
 P.O.T.  $\Delta 0^{\circ}00'00''$   
 P.k. nail

(21A)

1-22-64

