

O.D.O.T. DISTRICT 2 SURVEY OFFICE (USE ONLY)

PERSONNEL

REFERENCE NO. 22B

SHEET 5 OF 15

NOTES CORDES

DATE 5/30/01

ROUTE SR 4

H.C. BROWN

WEATHER SUNNY

COUNTY SENECA

R.C. HOMAN

TEMP. 68°

TOWNSHIP REED

SECTION 12

DWG BY NASON

PID 107060

T 2 N R 17 E

TYPE MONUMENT P.K./ WASHER

ON SURFACE - ~~BELOW~~ ON

OFFSET \varnothing PAVEMENT ON LT : RT

- TO - EDGE PAVEMENT

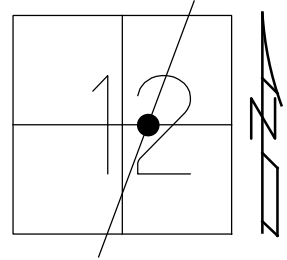
STATION: 592+50.3

HORZ.DATUM: NAD 83 (2011)

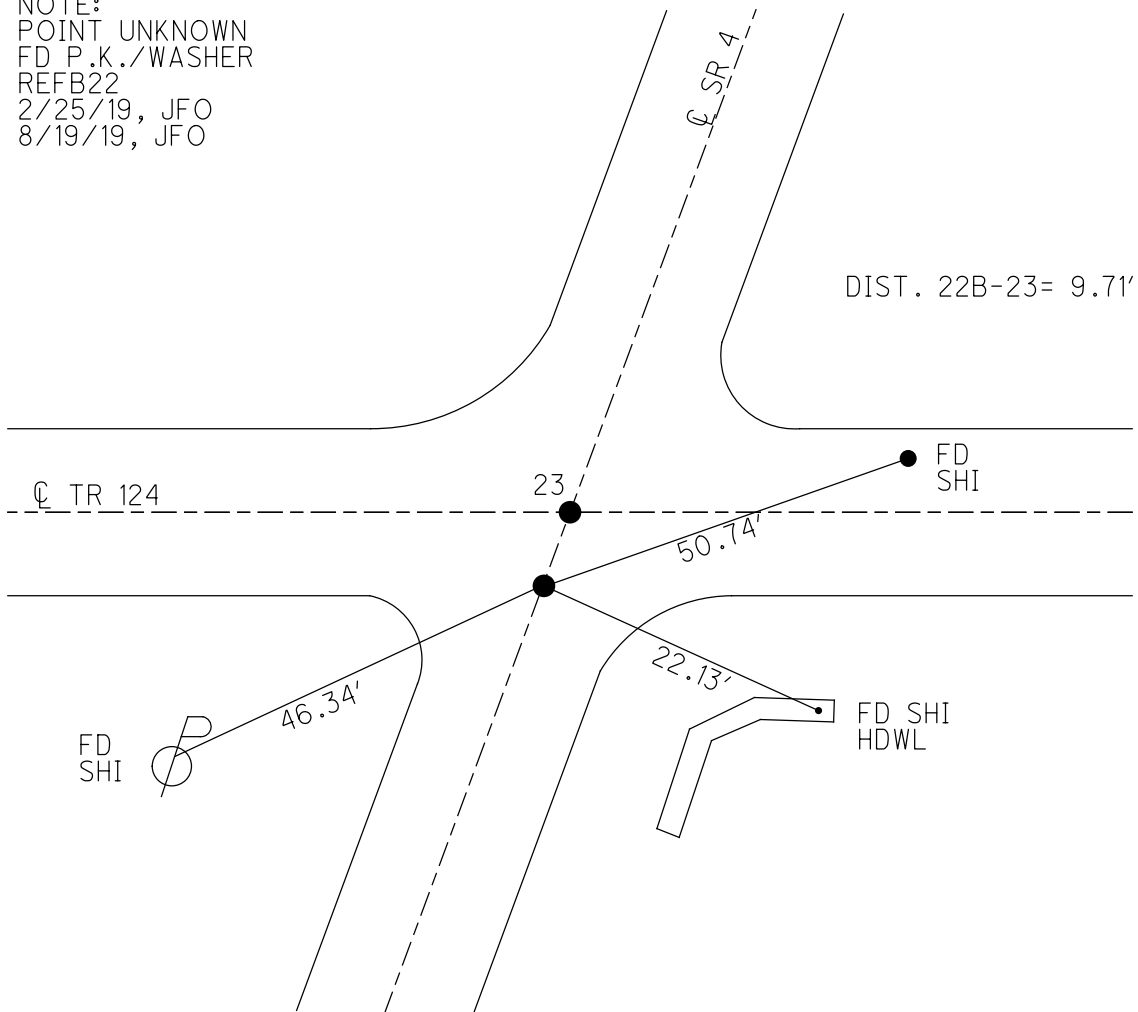
GEOID: 2012A

GRID: NORTHING: 539170.988

EASTING: 1872208.478



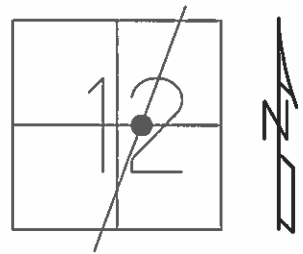
NOTE:
POINT UNKNOWN
FD P.K./WASHER
REFB22
2/25/19, JFO
8/19/19, JFO



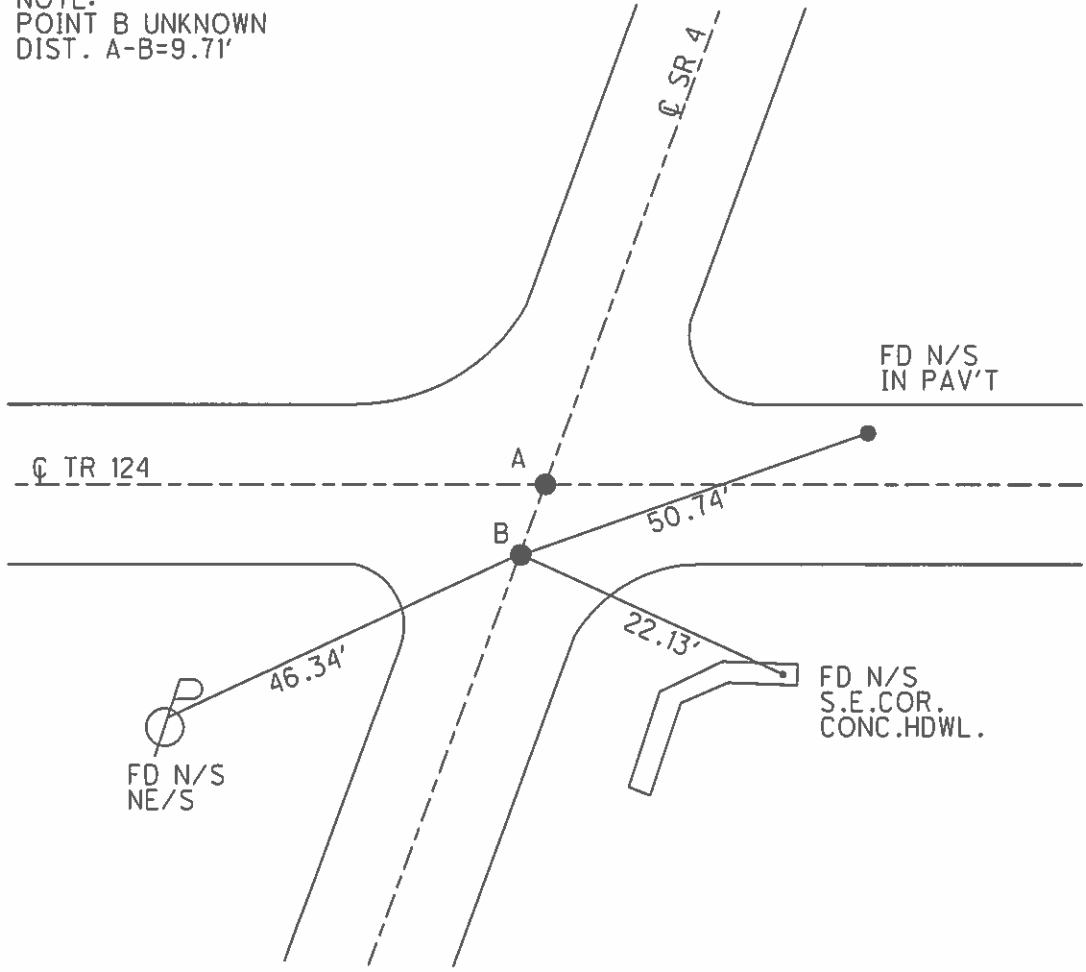
O.D.O.T. DISTRICT 2 SURVEY OFFICE (USE ONLY)

PERSONNEL	REFERENCE NO.	23 A	SHEET	46	OF	56
NOTES	CORDES	DATE	5/30/01	ROUTE	SR 4	
H.C.	BROWN	WEATHER	SUNNY	COUNTY	SENECA	
R.C.	HOMAN	TEMP.	68°	TOWNSHIP	REED	
				SECTION	12	
				T. 2 N	R. 17 E	

TYPE MONUMENT P.K./WASHER
 ON SURFACE - ~~BELOW~~ ON
 LEFT - PAV'T - RIGHT ON
 TO EDGE PAVEMENT
 S.L.M. (A= 592+60)
 GRID: NORTHING: EASTING:



NOTE:
 POINT B UNKNOWN
 DIST. A-B=9.71'



O.D.O.T. DISTRICT 2 SURVEY OFFICE

PERSONNEL

REFERENCE NO. 23

SHEET 11 OF 19

NOTES Cordes

H.C. Brown

DATE 5-30-01

ROUTE 4

R.C. Homan

WEATHER Sunny

COUNTY Seneca

TEMP. 68°

TOWNSHIP Reed

SECTION 12

T2 N R 17 E

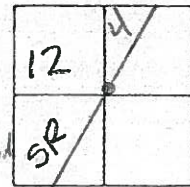
TYPE MONUMENT PK/Washer

ON SURFACE - ~~BELOW~~ On

~~LEFT~~ - & PAV'T. - ~~RIGHT~~ On

TO EDGE PAVEMENT

S.L.M. 592+60 (A is ODOT Pt.) Pt. B = ORIGINAL UNKNOWN



Record: 5-21-1987
Sta. 590+11.14
PK/Washer Atop RR spk
P.I. Δ = 00° 02' 00" Lt.

Set PK/Washer
7-2-01 BWC

Dist Between
"A" - "B" = 9.71'

