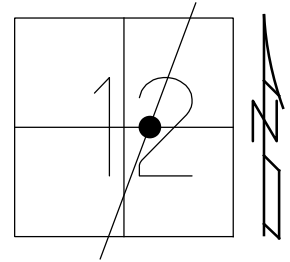


O.D.O.T. DISTRICT 2 SURVEY OFFICE (USE ONLY)

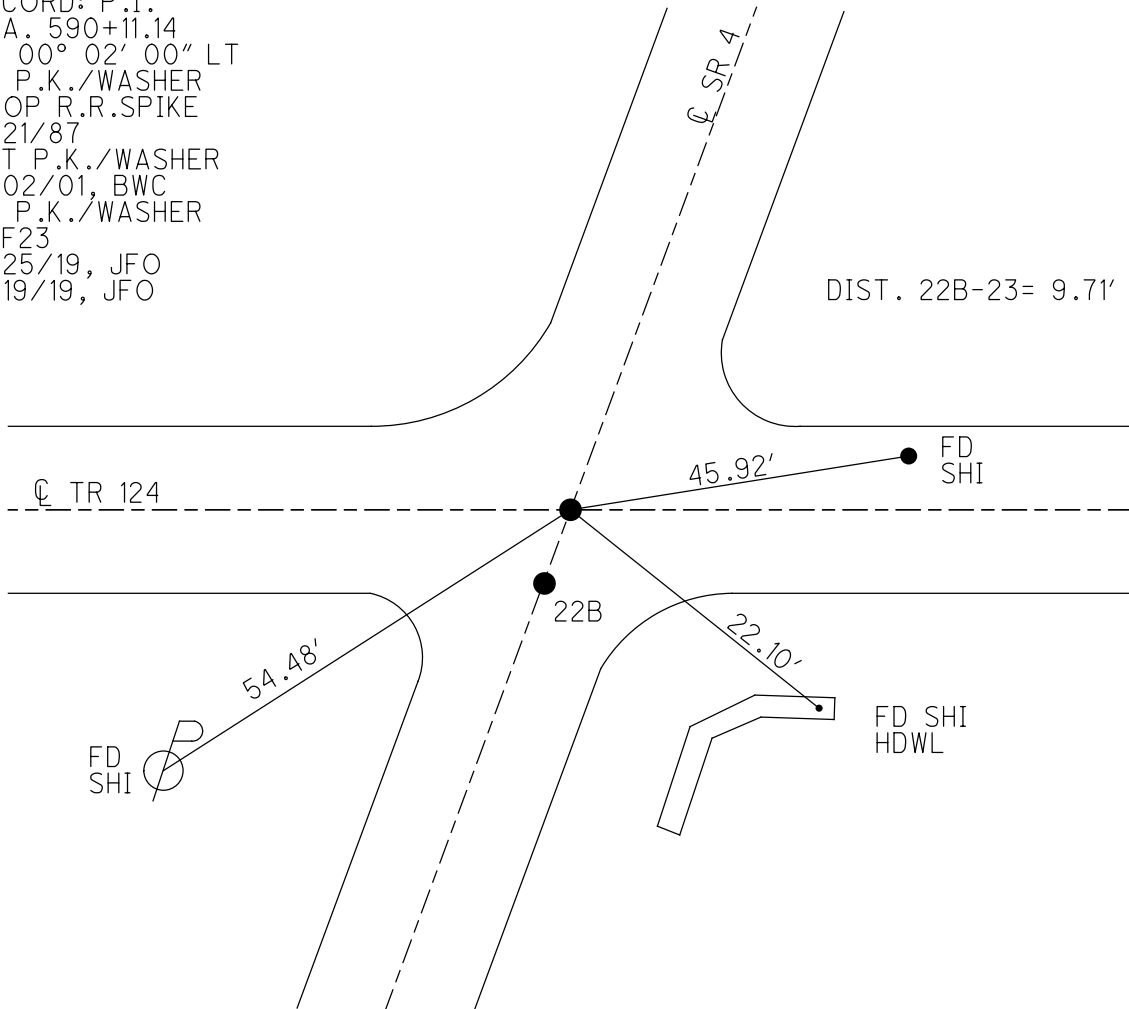
PERSONNEL \_\_\_\_\_ REFERENCE NO. 23 SHEET 6 OF 15  
 NOTES CORDES DATE 5/30/01 ROUTE SR 4  
 H.C. BROWN WEATHER SUNNY COUNTY SENECA  
 R.C. HOMAN TEMP. 68° TOWNSHIP REED  
 DWG BY NASON PID 107060 SECTION 12  
 T 2 N R 17 E

TYPE MONUMENT P.K./ WASHER  
 ON SURFACE - ~~BELOW~~ ON  
 OFFSET  $\varnothing$  PAVEMENT ON LT : RT  
- TO - EDGE PAVEMENT  
 STATION: 592+60

HORIZ.DATUM: NAD83 (2011) GEOID: 2012A  
 GRID: NORTHING: 539180.095 EASTING: 1872211.732



RECORD: P.I.  
 STA. 590+11.14  
 $\Delta = 00^\circ 02' 00''$  LT  
 FD P.K./WASHER  
 ATOP R.R.SPIKE  
 5/21/87  
 SET P.K./WASHER  
 7/02/01, BWC  
 FD P.K./WASHER  
 REF23  
 2/25/19, JFO  
 8/19/19, JFO

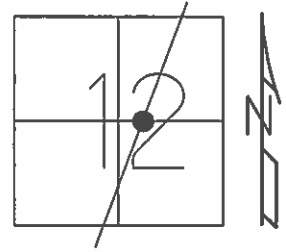


O.D.O.T. DISTRICT 2 SURVEY OFFICE (USE ONLY)

PERSONNEL \_\_\_\_\_ REFERENCE NO. 23 SHEET 47 OF 56

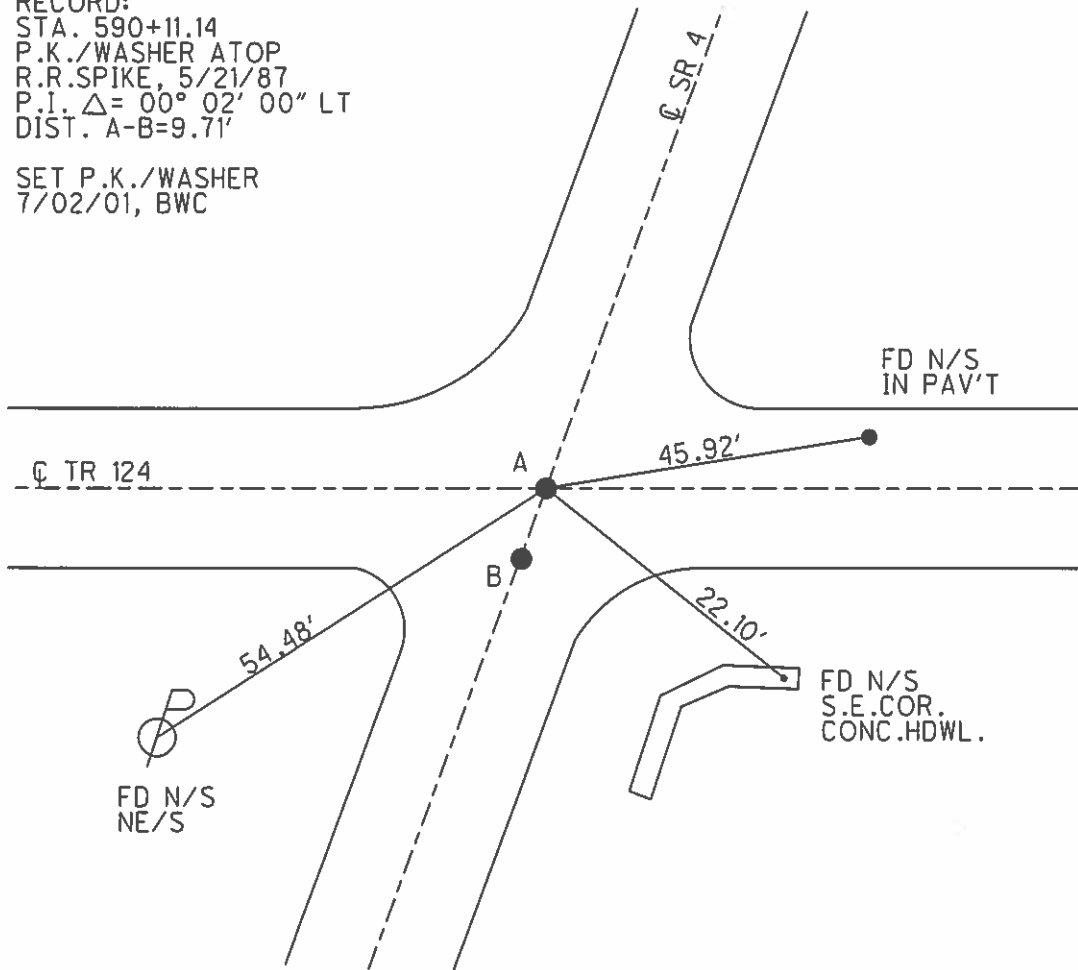
NOTES CORDES DATE 5/30/01 ROUTE SR 4  
 H.C. BROWN WEATHER SUNNY COUNTY SENECA  
 R.C. HOMAN TEMP. 68° TOWNSHIP REED  
 \_\_\_\_\_ SECTION 12  
 \_\_\_\_\_ T 2 N R 17 E

TYPE MONUMENT P.K./WASHER  
 ON SURFACE - ~~BELOW~~ ON  
 LEFT - ☉ PAV'T - RIGHT ON  
\_\_\_\_\_ TO \_\_\_\_\_ EDGE PAVEMENT  
 S.L.M. 592+60  
 GRID: NORTHING: \_\_\_\_\_ EASTING: \_\_\_\_\_



RECORD:  
 STA. 590+11.14  
 P.K./WASHER ATOP  
 R.R.SPIKE, 5/21/87  
 P.I. Δ = 00° 02' 00" LT  
 DIST. A-B = 9.71'

SET P.K./WASHER  
 7/02/01, BWC



O.D.O.T. DISTRICT 2 SURVEY OFFICE

PERSONNEL

REFERENCE NO. 23

SHEET 11 OF 19

NOTES Cordes

H.C. Brown

DATE 5-30-01

ROUTE 4

R.C. Homan

WEATHER Sunny

COUNTY Seneca

TEMP. 68°

TOWNSHIP Reed

SECTION 12

T2 N R 17 E

TYPE MONUMENT PK/Washer

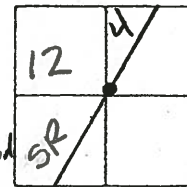
ON SURFACE - ~~BELOW~~ on

~~LEFT~~ - & PAV'T. - ~~RIGHT~~ on

TO EDGE PAVEMENT

S.L.M. 592+60 (A is ODOT Pt.)

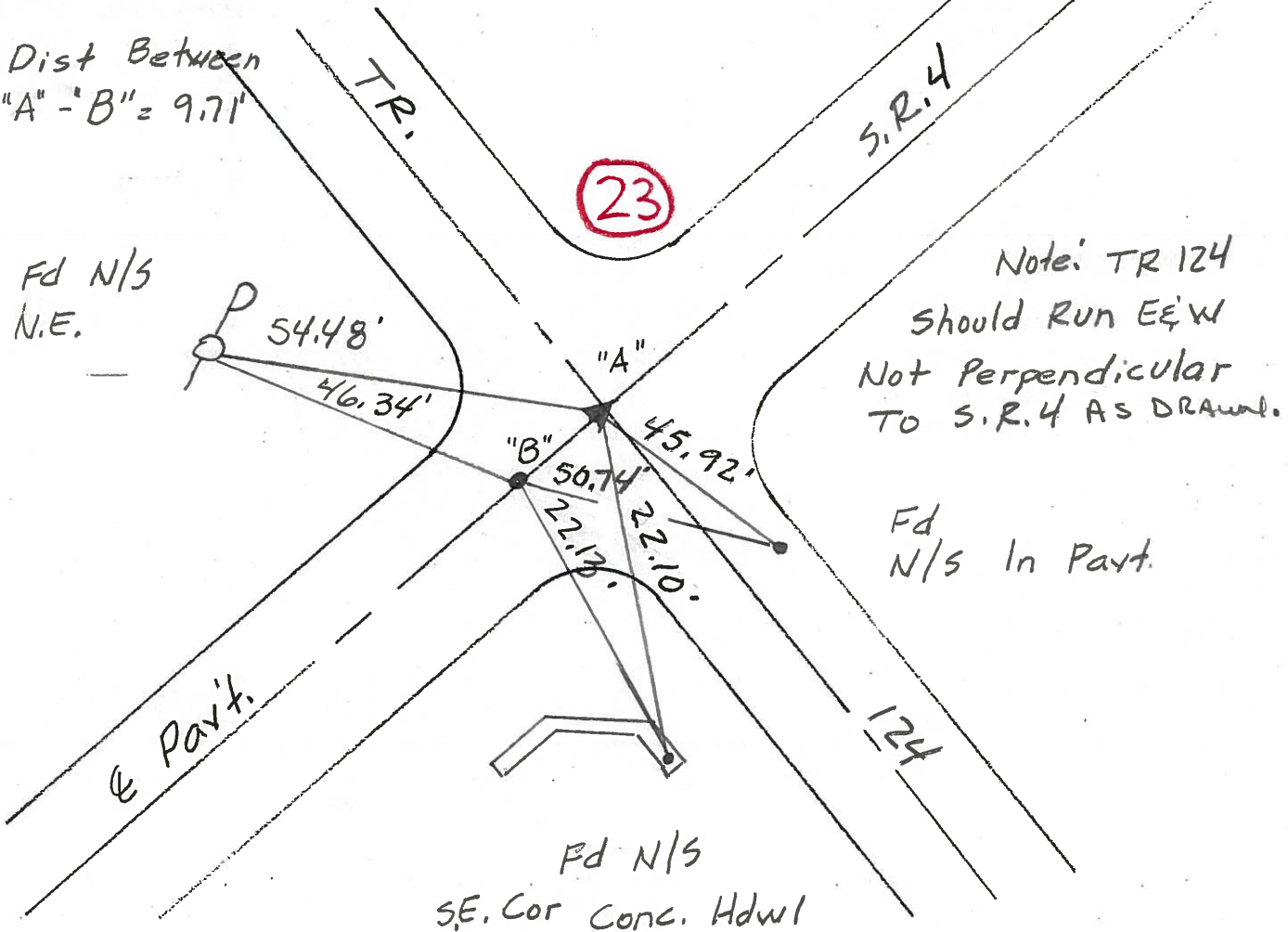
Pt. B = ORIGINAL UNKNOWN



Record: 5-21-1987  
Sta. 590+11.14  
PK/Washer Atop RR spk  
P.I. Δ = 00° 02' 00" Lt.

Set PK/Washer  
7-2-01 BWC

Dist Between  
"A" - "B" = 9.71'



Note: TR 124  
Should Run E&W  
Not Perpendicular  
TO S.R. 4 AS DRAWN.

Fd  
N/S In Pavt.

Fd N/S  
SE. Cor Conc. Hdwl

# O.D.O.T. DISTRICT 2 SURVEY OFFICE

PERSONNEL

REFERENCE NO. 23

SHEET 42 OF 50

NOTES CHENEY

H.C. RIPPLE

DATE 7-27-1993

ROUTE #4

R.C. BARBOUR

WEATHER FAIR

COUNTY SENECA

GEYMAN

TEMP. 90°

TOWNSHIP REED

SECTION 12

T2N R17E

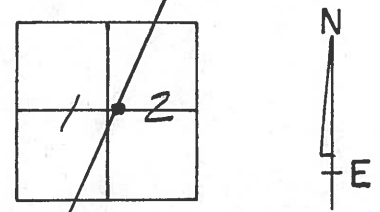
TYPE MONUMENT R.R. SPK.

~~ON~~ SURFACE - BELOW 2" BELOW

~~LEFT~~ - C. PAV'T. - ~~RIGHT~~ ON

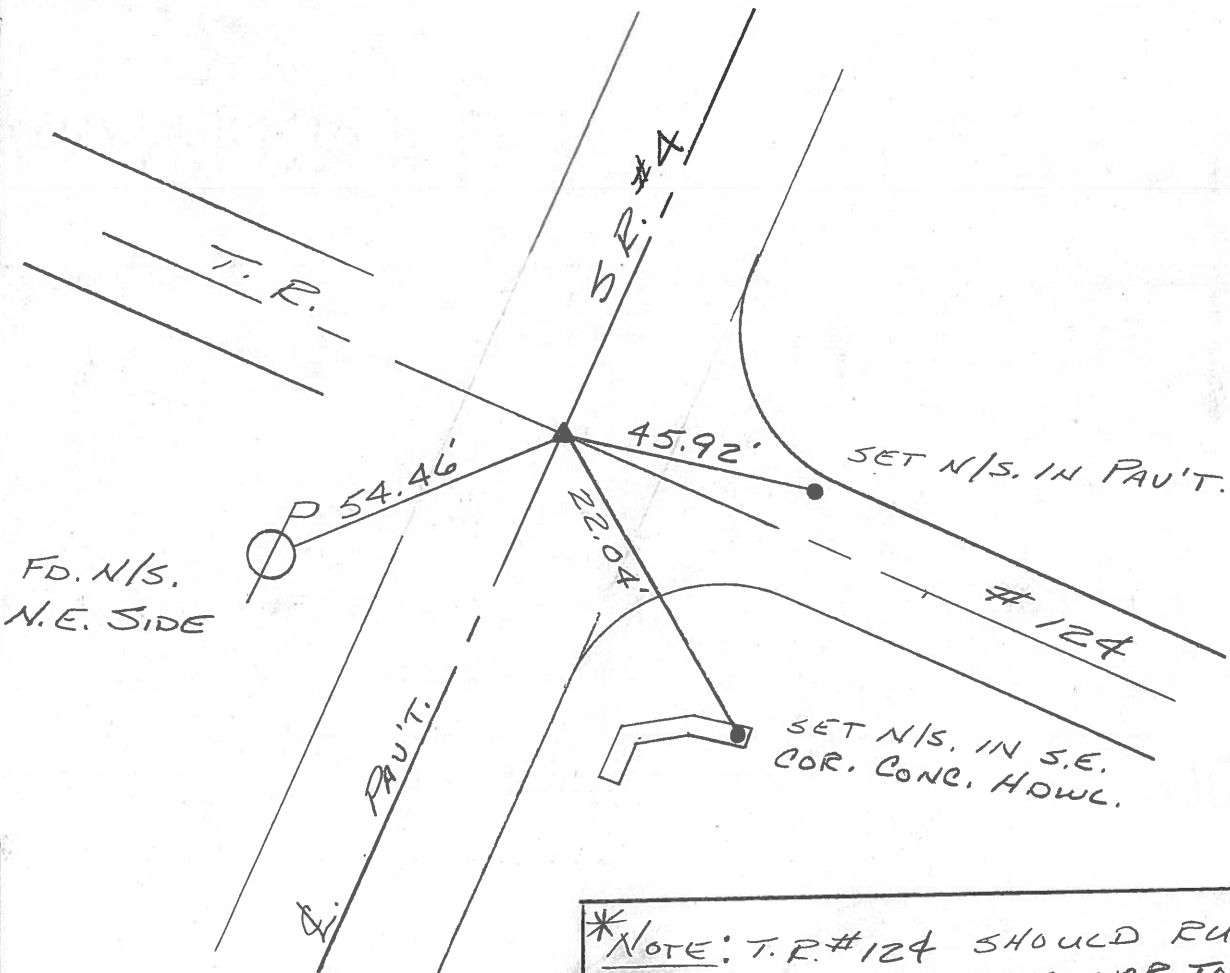
TO - EDGE PAVEMENT

S.L.M. 592+60



RECORD: 5-21-1987  
 P.I. STA. 590+11.14  
 $\Delta = 00^{\circ}02'00''$  LT.  
 R.R. SPK. 6.5" BELOW  
 SURFACE

SET RK/WASHER  
 10-13-1993  
 RCC



\*NOTE: T.R. #124 SHOULD RUN E.W.  
 NOT PERPENDICULAR TO S.R. #4.

# O.D.O.T. DISTRICT 2 SURVEY OFFICE

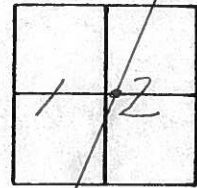
PERSONNEL

NOTES Cronin  
 H.C. Ripple  
 R.C. Barbour  
Geyman

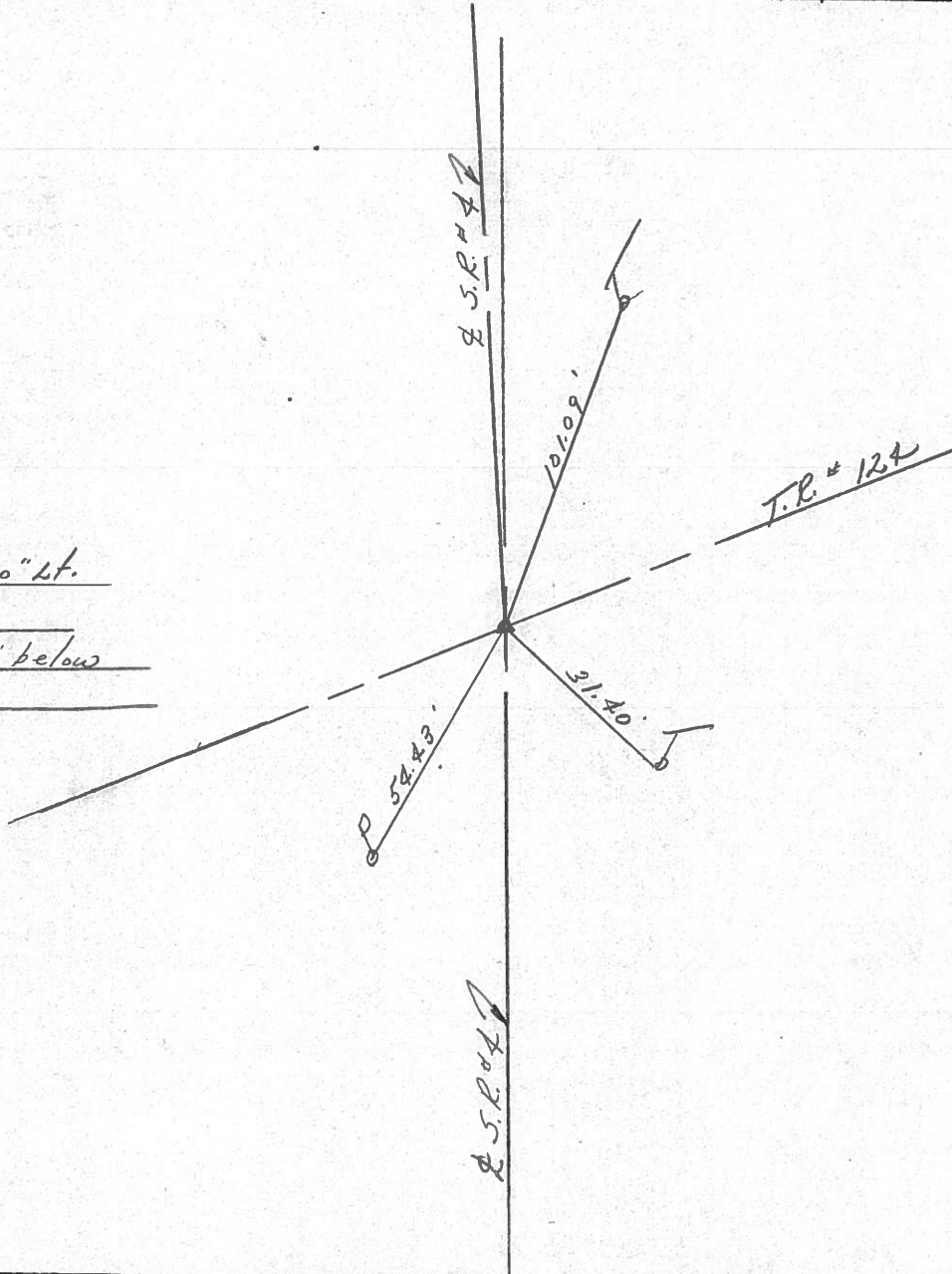
REFERENCE NO. 23  
 DRAWN 12/09/87  
 DATE 5/21/87  
 WEATHER sunny  
 TEMP. 80°

SHEET 17 OF \_\_\_\_\_  
 ROUTE S.R.#4  
 COUNTY Seneca  
 TOWNSHIP Reed  
 SECTION 12  
T 2 N R 17 E

TYPE MONUMENT R.R. spike  
 ON SURFACE - BELOW 2" below  
 LEFT - PAV'T. - RIGHT R Pav't.  
 \_\_\_\_\_ TO \_\_\_\_\_ EDGE PAVEMENT  
 S.L.M. \_\_\_\_\_



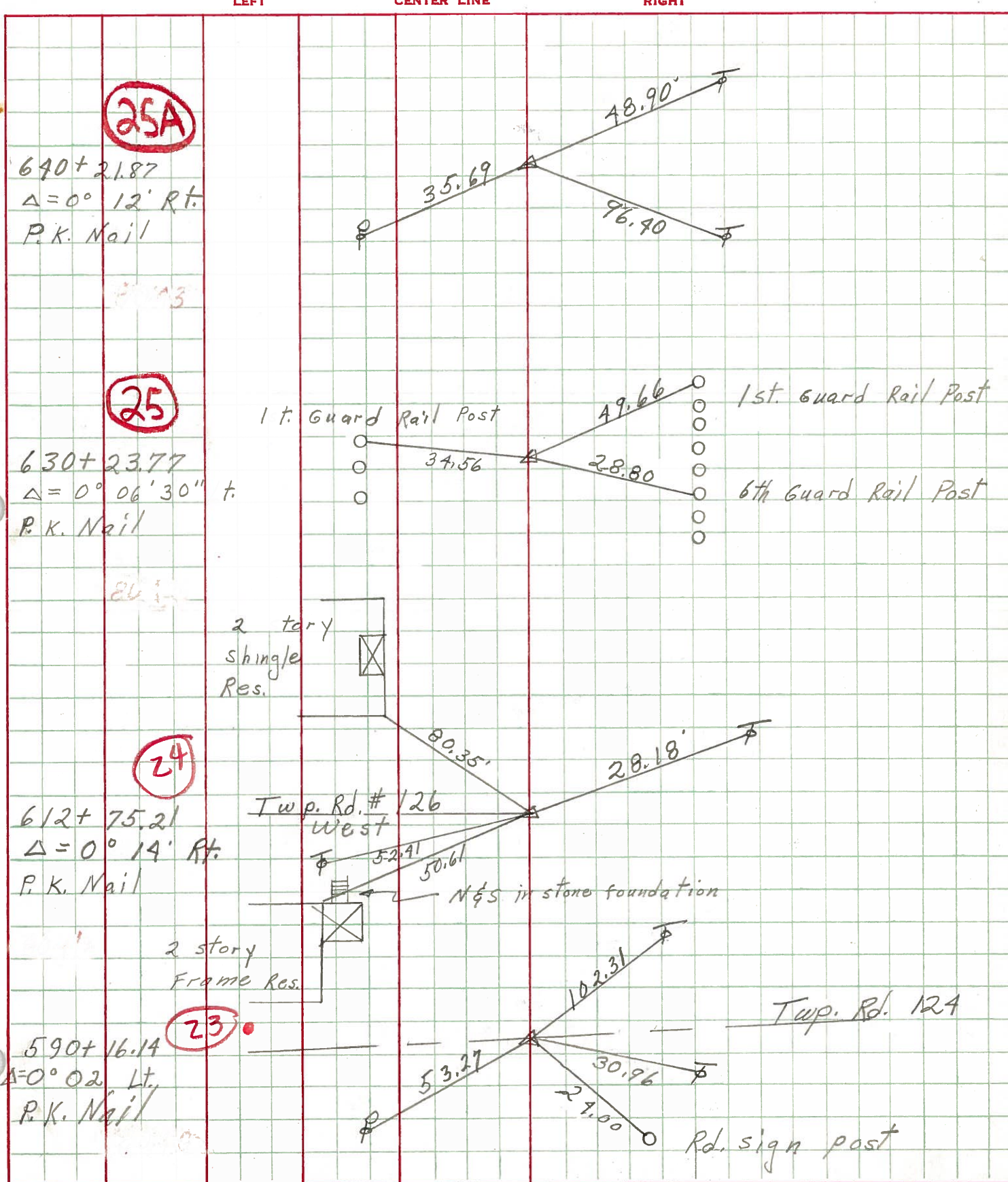
P.I. Δ = 00°02'00" Lt.  
590+11.14  
R.R. spike 6 1/2" below  
surface





PERSONNEL	TITLE	PERSONNEL	TITLE	COUNTY	DATE
Schneider		Potts		Seneca	10-3-68
Mosser				S. R. 4	WEATHER Windy
Barbour				SEC.	TEMP. 50°
Redding					

DESCRIPTION Ties for Control Points JOB NO. \_\_\_\_\_





PERSONNEL TITLE PERSONNEL TITLE  
 Schneider Patts  
 \_\_\_\_\_  
 \_\_\_\_\_

COUNTY Seneca DATE 10-3-68  
 S. R. 4 WEATHER Windy  
 SEC. \_\_\_\_\_ TEMP. 30°

DESCRIPTION Ties for Control Points LEFT CENTER LINE RIGHT JOB NO.

<p>Fd. R.R. spk 7 3/4" down 5/13/72 58°</p> <p>696 + 3187  <math>\Delta = 0^{\circ} 13' \text{ Rt.}</math>      R.K. Nail</p> <p>8043</p>	<p><b>(25A)</b></p>			<p>Reset R.R. spk 7/19/73 84°</p> <p>dig when need</p> <p>5/26/87 sunny 78°</p> <p>2" down</p> <p>Reset R.R. spk 7/19/73</p>
<p>Fd. R.R. spk 6 3/4" down 5/14/72</p> <p>1st. Guard Rail Post</p> <p>630 + 2377  <math>\Delta = 1^{\circ} 04' 30'' \text{ Lt.}</math>      R.K. Nail</p> <p>8042</p>	<p><b>(25)</b></p>			<p>1st. Guard Rail Post</p> <p>6th Guard Rail Post</p>
<p>630 + 2377      612 + 7521      17 + 4 8.56</p> <p>2 story Sample Res.</p>				<p>Reset R.R. spk 7/19/73 75°</p> <p>3/15/85 42°</p>
<p>Fd. R.R. spk 8" down 5/14/72 60°</p> <p>612 + 7521  <math>\Delta = 0^{\circ} 14' \text{ Lt.}</math>      R.K. Nail</p> <p>8041</p>	<p><b>(24)</b></p>	<p>Twp. Rd. # 126</p>		<p>Reset R.R. spk 7/19/73 70°</p> <p>P.K.E washer on surface 1 Lt.</p>
<p>Fd. R.R. spk 4 1/2" down 5/11/72 60°</p> <p>590 + 14.14  <math>\Delta = 0^{\circ} 02' \text{ Lt.}</math>      R.K. Nail</p> <p>8040</p>	<p><b>(23)</b></p>			<p>Reset R.R. spk 7/19/73 70°</p> <p>Twp. Rd. 124</p> <p>2" down</p> <p>Rd sign post</p>



PERSONNEL TITLE PERSONNEL TITLE

F Krabill  
T. Kowalski  
D. Brooks

COUNTY Seneca DATE

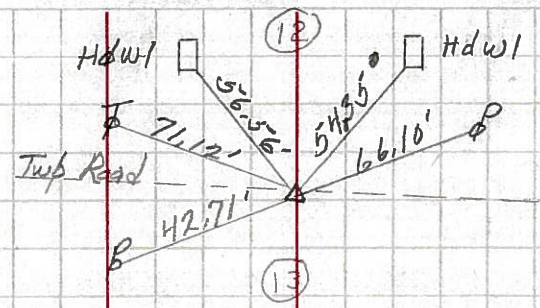
S. R. 4 WEATHER

SEC. TEMP.

DESCRIPTION LEFT CENTER LINE RIGHT JOB NO.

562+07.54 # 261  
P.I. Δ-0°-05'-00"LT  
P.k. nail

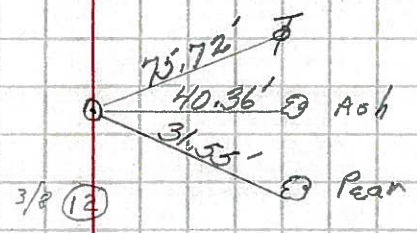
22



1-22-64

573+04.22 # 262  
P.O.T. Δ0'-00'-00"  
P.k. nail

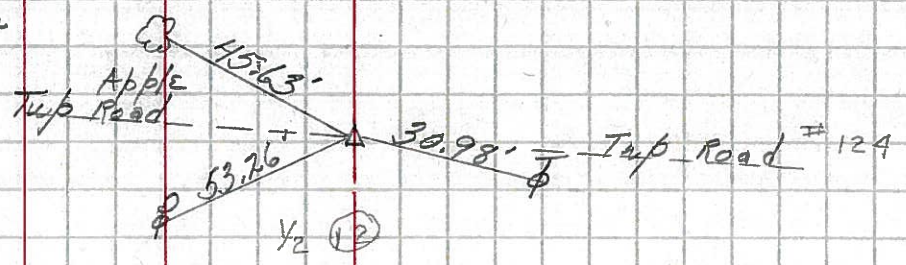
22A



1-22-64

590+16.14 # 263  
P.I. Δ=0°-02'-00"LT  
P.k. nail

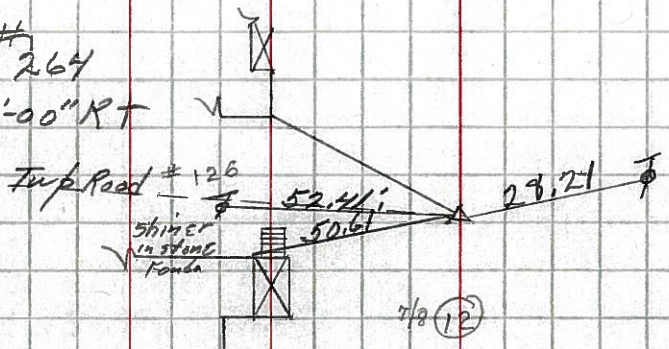
23



1-22-64

612+75.21 # 264  
P.I. Δ-0°-14'-00"RT  
P.k. nail

24



1-22-64