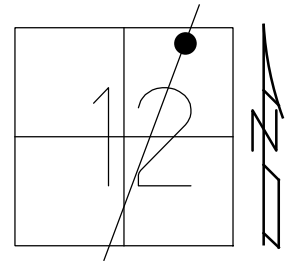


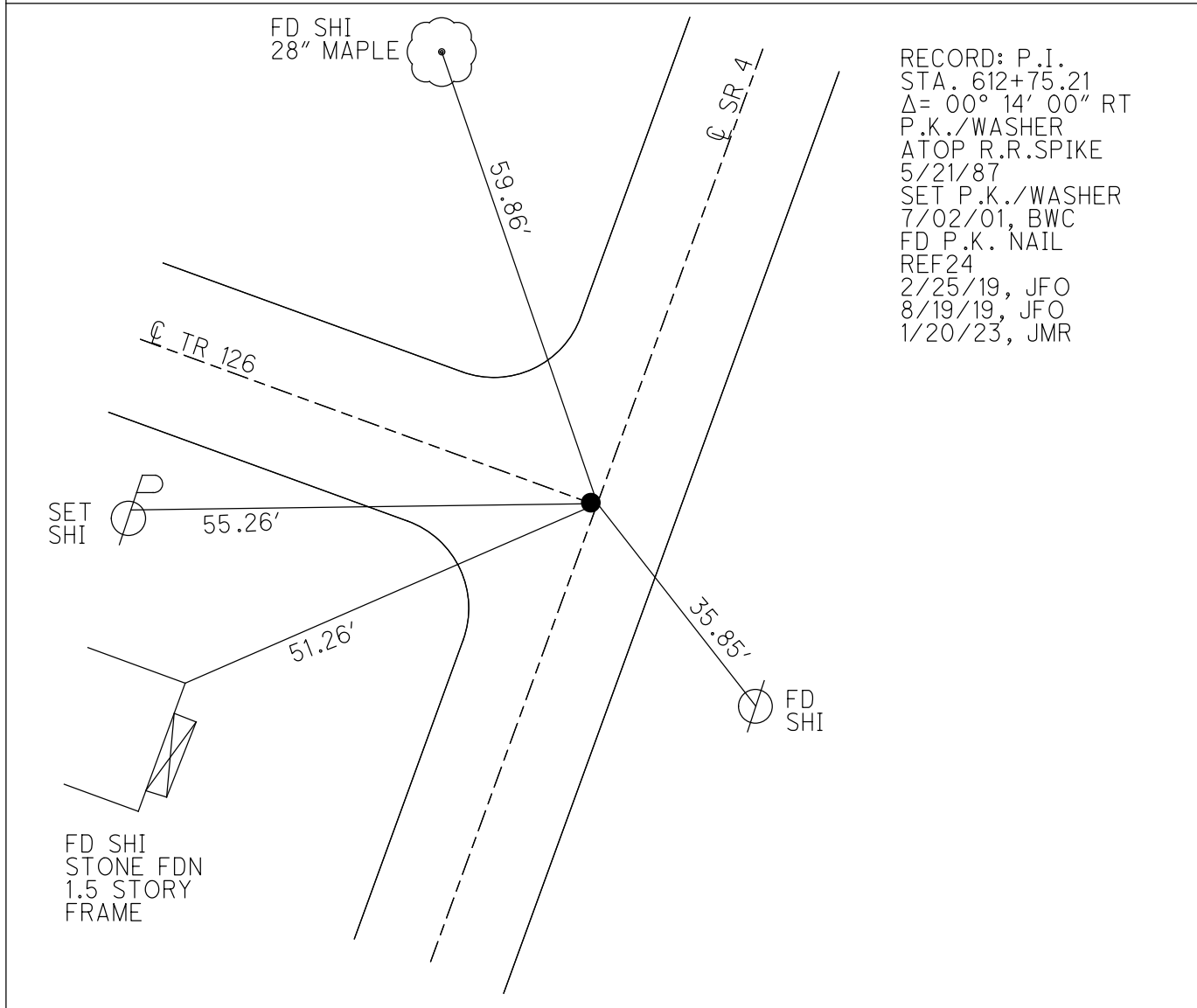
O.D.O.T. DISTRICT 2 SURVEY OFFICE (USE ONLY)

PERSONNEL \_\_\_\_\_ REFERENCE NO. 24 SHEET 48 OF 56  
 NOTES CORDES DATE 6/1/01 ROUTE SR 4  
 H.C. BROWN WEATHER RAIN COUNTY SENECA  
 R.C. HOMAN TEMP. 60° TOWNSHIP REED  
 DWG BY NASON PID PAVETRAIN SECTION 12  
 T 2 N R 17 E

TYPE MONUMENT P.K./WASHER  
 ON SURFACE - ~~BELOW~~ ON  
 OFFSET 1' Pavement LT : RT  
11.5' TO RT EDGE PAVEMENT  
 STATION: 615+23



HORZ.DATUM: NAD83 (2011) GEOID: 2012A  
 GRID: NORTHING: 541309.284 EASTING: 1872960.553



RECORD: P.I.  
 STA. 612+75.21  
 $\Delta = 00^\circ 14' 00''$  RT  
 P.K./WASHER  
 ATOP R.R.SPIKE  
 5/21/87  
 SET P.K./WASHER  
 7/02/01, BWC  
 FD P.K. NAIL  
 REF24  
 2/25/19, JFO  
 8/19/19, JFO  
 1/20/23, JMR

O.D.O.T. DISTRICT 2 SURVEY OFFICE (USE ONLY)

PERSONNEL

REFERENCE NO. 24

SHEET 7 OF 15

NOTES CORDES

DATE 6/1/01

ROUTE SR 4

H.C. BROWN

WEATHER RAIN

COUNTY SENECA

R.C. HOMAN

TEMP. 60°

TOWNSHIP REED

SECTION 12

DWG BY NASON

PID 107060

T 2 N R 17 E

TYPE MONUMENT P.K./WASHER

ON SURFACE - ~~BELOW~~ ON

OFFSET  $\phi$  PAVEMENT 1' LT : RT

11.5' TO RT EDGE PAVEMENT

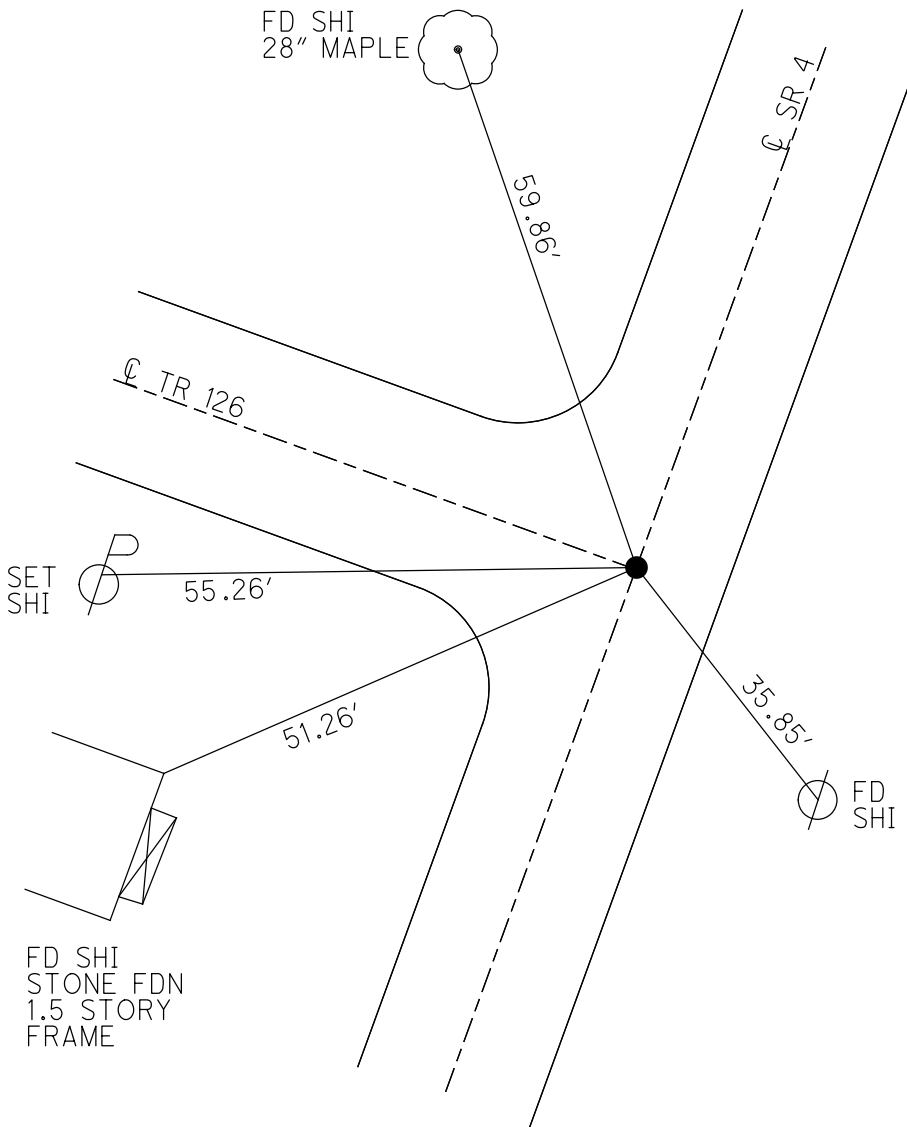
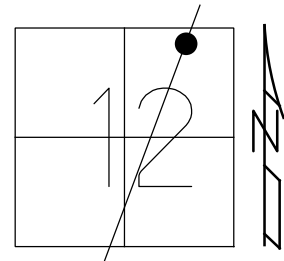
STATION: 615+23

HORZ.DATUM: NAD83 (2011)

GEOID: 2012A

GRID: NORTHING: 541309.284

EASTING: 1872960.553

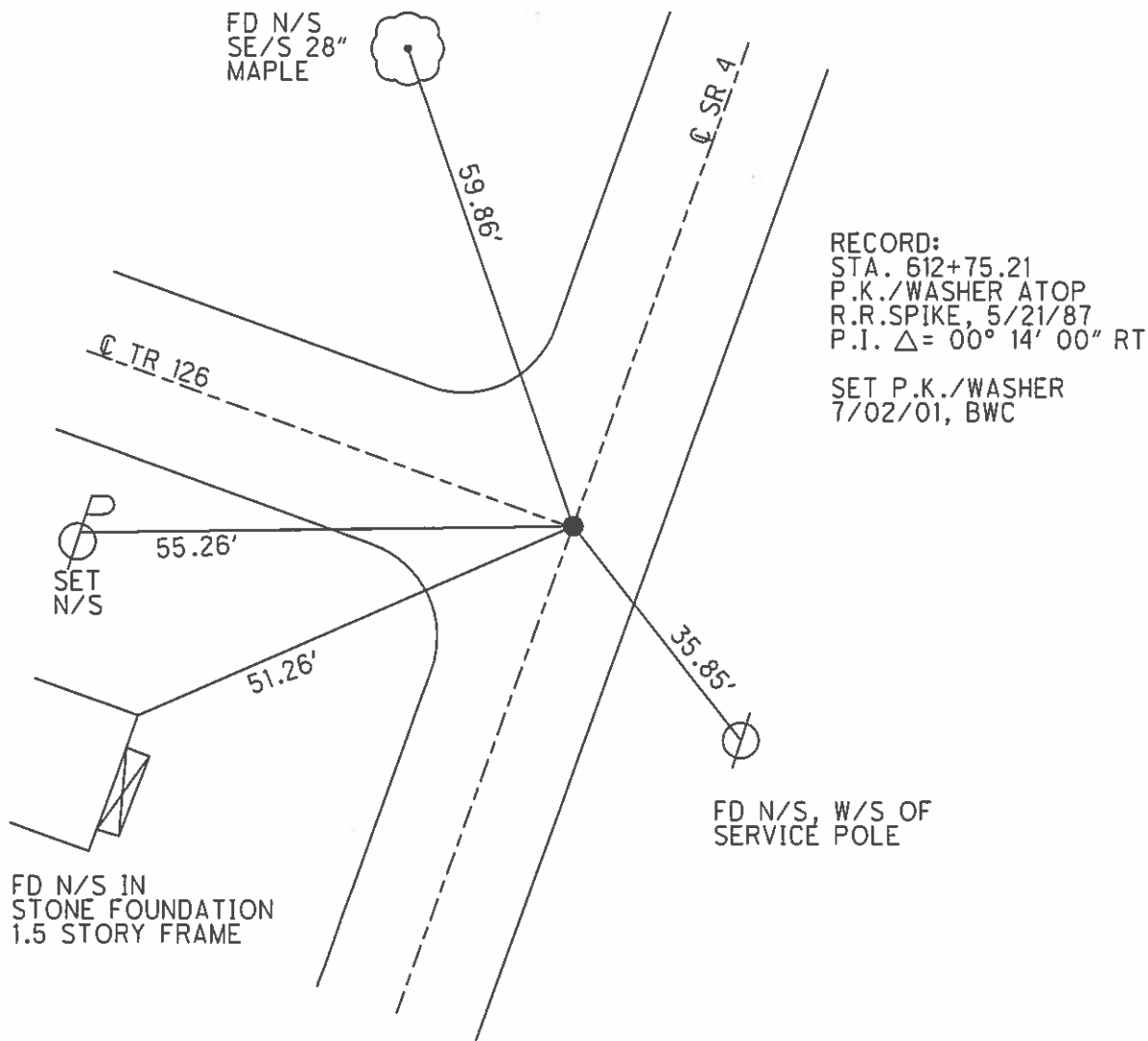
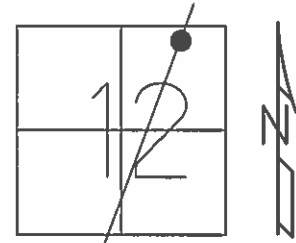


RECORD: P.I.  
 STA. 612+75.21  
 $\Delta = 00^\circ 14' 00''$  RT  
 P.K./WASHER  
 ATOP R.R.SPIKE  
 5/21/87  
 SET P.K./WASHER  
 7/02/01, BWC  
 FD P.K. NAIL  
 REF24  
 2/25/19, JFO  
 8/19/19, JFO

PERSONNEL \_\_\_\_\_ REFERENCE NO. 24 SHEET 48 OF 56

NOTES \_\_\_\_\_ DATE 6/1/01 ROUTE SR 4  
H.C. BROWN WEATHER RAIN COUNTY SENECA  
R.C. HOMAN TEMP. 60° TOWNSHIP REED  
SECTION 12  
T 2 N R 17 E

TYPE MONUMENT P.K./WASHER  
ON SURFACE - ~~BELOW~~ ON \_\_\_\_\_  
LEFT - ☉ PAV'T - ~~RIGHT~~ 1'  
11.5' TO RT EDGE PAVEMENT  
S.L.M. 615+23  
GRID: NORTHING: \_\_\_\_\_ EASTING: \_\_\_\_\_



# O.D.O.T. DISTRICT 2 SURVEY OFFICE

PERSONNEL

REFERENCE NO. 24

SHEET 12 OF 19

NOTES Cordes

H.C. Brown

DATE 6-1-01

ROUTE 4

R.C. Homan

WEATHER Rain

COUNTY Seneca

TEMP. 60°

TOWNSHIP Reed

SECTION 12

T2 N R 17 E

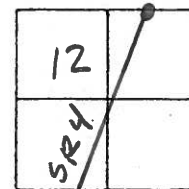
TYPE MONUMENT PK/Washer

ON SURFACE - ~~WOOD~~ On

LEFT-~~CE~~ PAV'T. - ~~1'~~ 1'

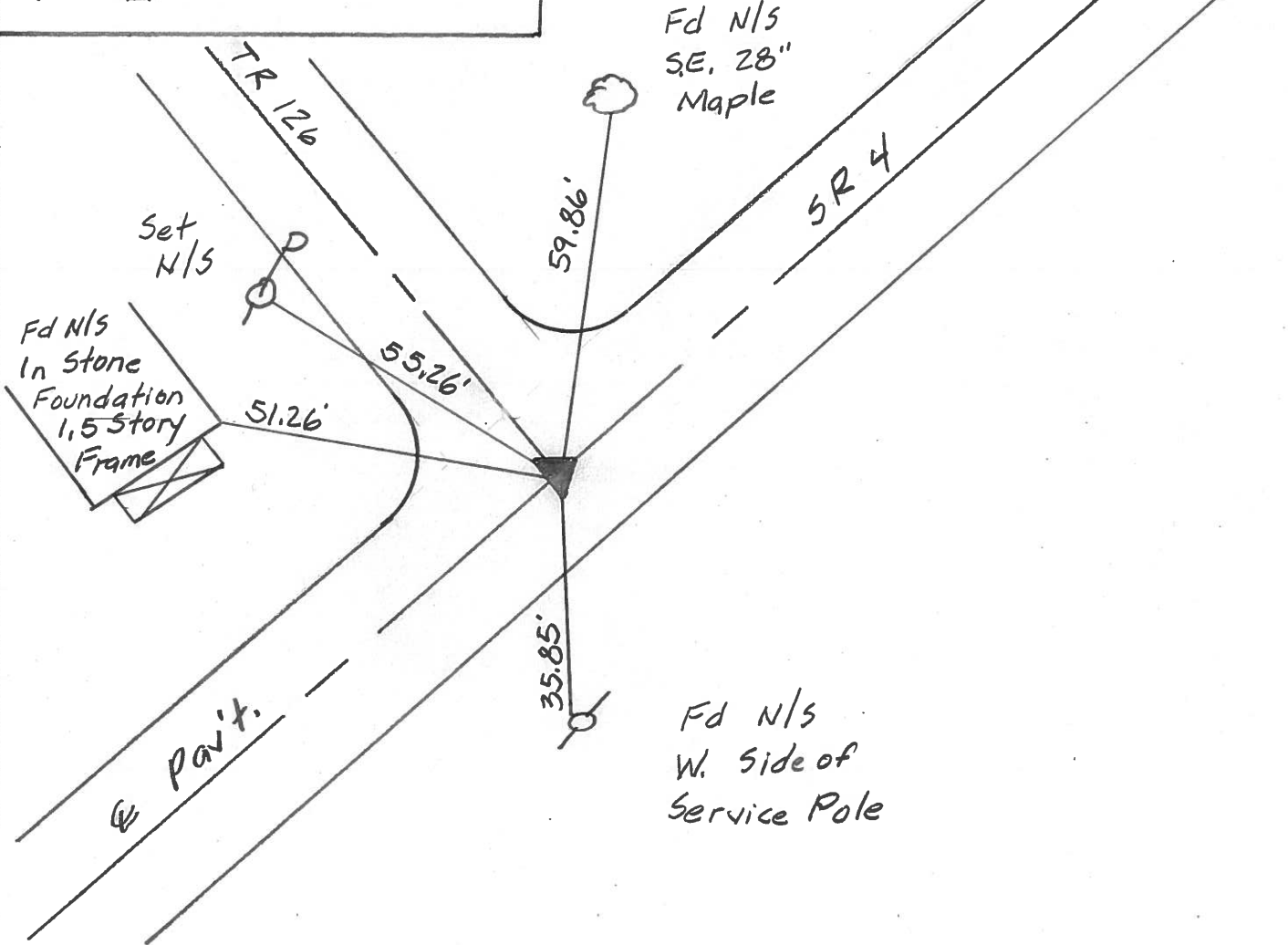
11.5' TO Rt. EDGE PAVEMENT

S.L.M. 615+23



Record: 5-21-1987  
Sta. 612+75.21  
PK/Washer Atop RR SPK  
P.I.  $\Delta = 00^{\circ}14'00''$  Rt.

Set PK/Washer  
7-2-01. BWC



O.D.O.T. DISTRICT 2 SURVEY OFFICE

PERSONNEL

REFERENCE NO. 24

SHEET 43 OF 50

NOTES CHENEY

H.C. RIPPLE

DATE 7-28-1993

ROUTE #4

R.C. BARBOUR

WEATHER FAIR

COUNTY SENECA

GEYMAN

TEMP. 85°

TOWNSHIP REED

SECTION 12

TEN RITE

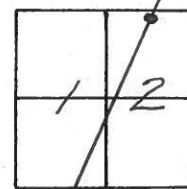
TYPE MONUMENT PK/WASHER

ON SURFACE - ~~BELOW~~ ON

LEFT - C. PAV'T. - ~~RIGHT~~ 1'

11.5' TO RT. EDGE PAVEMENT

S.L.M. 615+23



RECORD: 5-21-1987

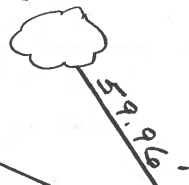
P.I. STA. 612+75.21

$\Delta = 00^{\circ}14'00''$  RT.

R.R. SPK. 10" BELOW SURFACE

SET PK/WASHER  
10-13-1993  
RCC

SET N/S. S.E. SIDE  
28" MAPLE



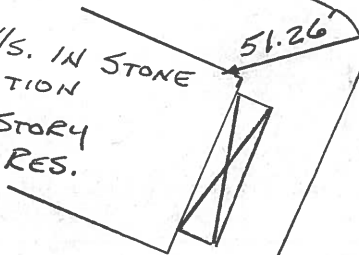
T.R. #126

S.R. #4

Fd. N/S. IN STONE  
FOUNDATION

1.5 STORY  
FRAME RES.

51.26'



C. PAV'T.

35.85'

SET N/S. W. SIDE  
SERVICE POLE



# O.D.O.T. DISTRICT 2 SURVEY OFFICE

PERSONNEL

NOTES Cronin  
 H.C. Ripple  
 R.G. Barbour  
Geyman

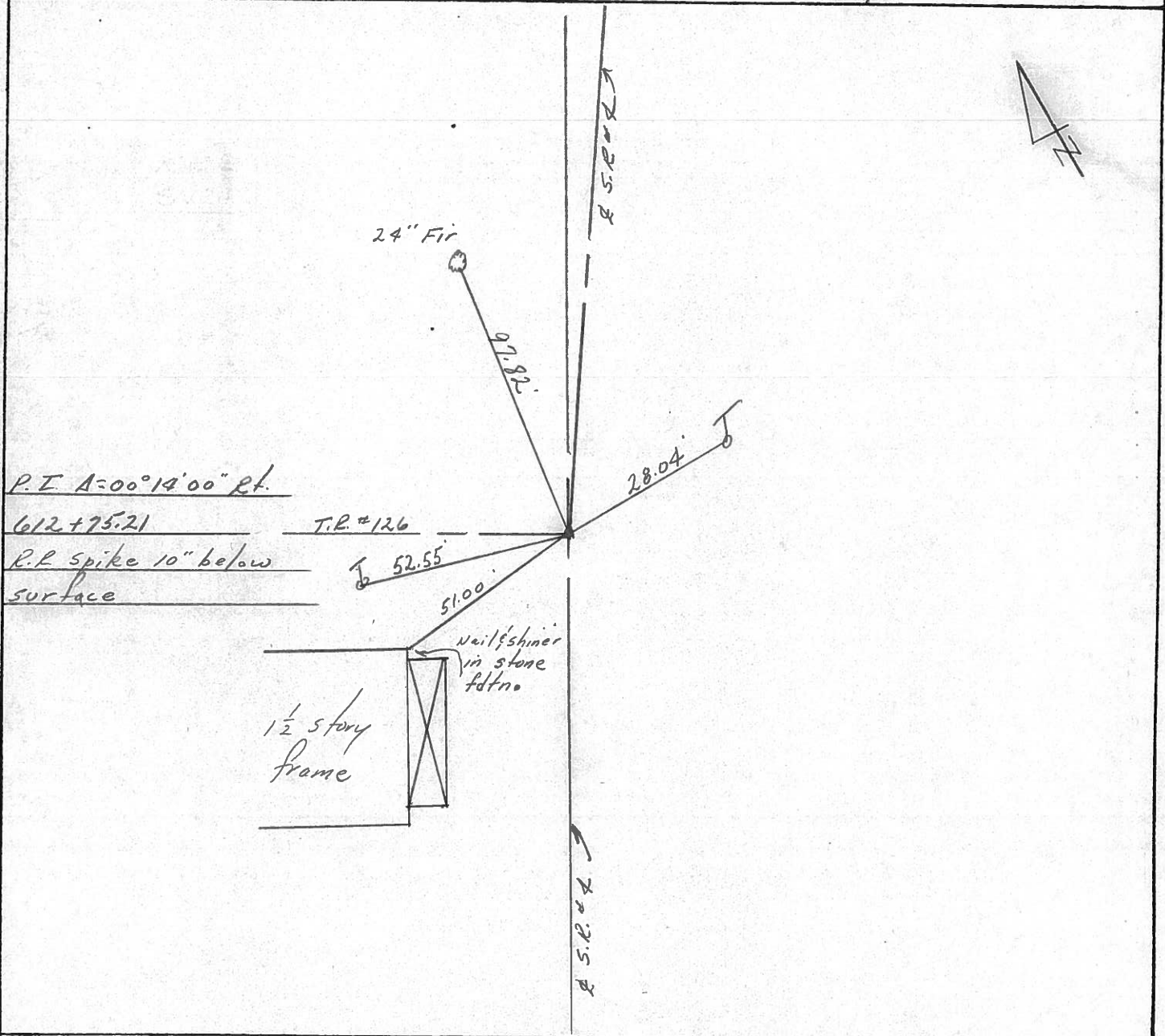
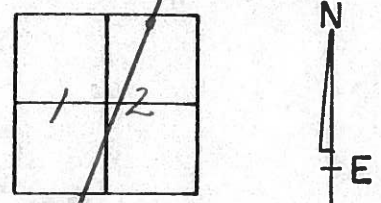
REFERENCE NO. 24

DRAWN 12/09/87  
 DATE 5/21/87  
 WEATHER sunny  
 TEMP. 80°

SHEET 18 OF     

ROUTE S.R. 44  
 COUNTY Seneca  
 TOWNSHIP Reed  
 SECTION 12  
T. 2 N R. 17 E

TYPE MONUMENT R.K. Washer  
 ON SURFACE - BELOW on surface  
 LEFT- & PAV'T. - RIGHT 1 1/2 Lt. & Pav't.  
 TO      EDGE PAVEMENT  
 S.L.M.     

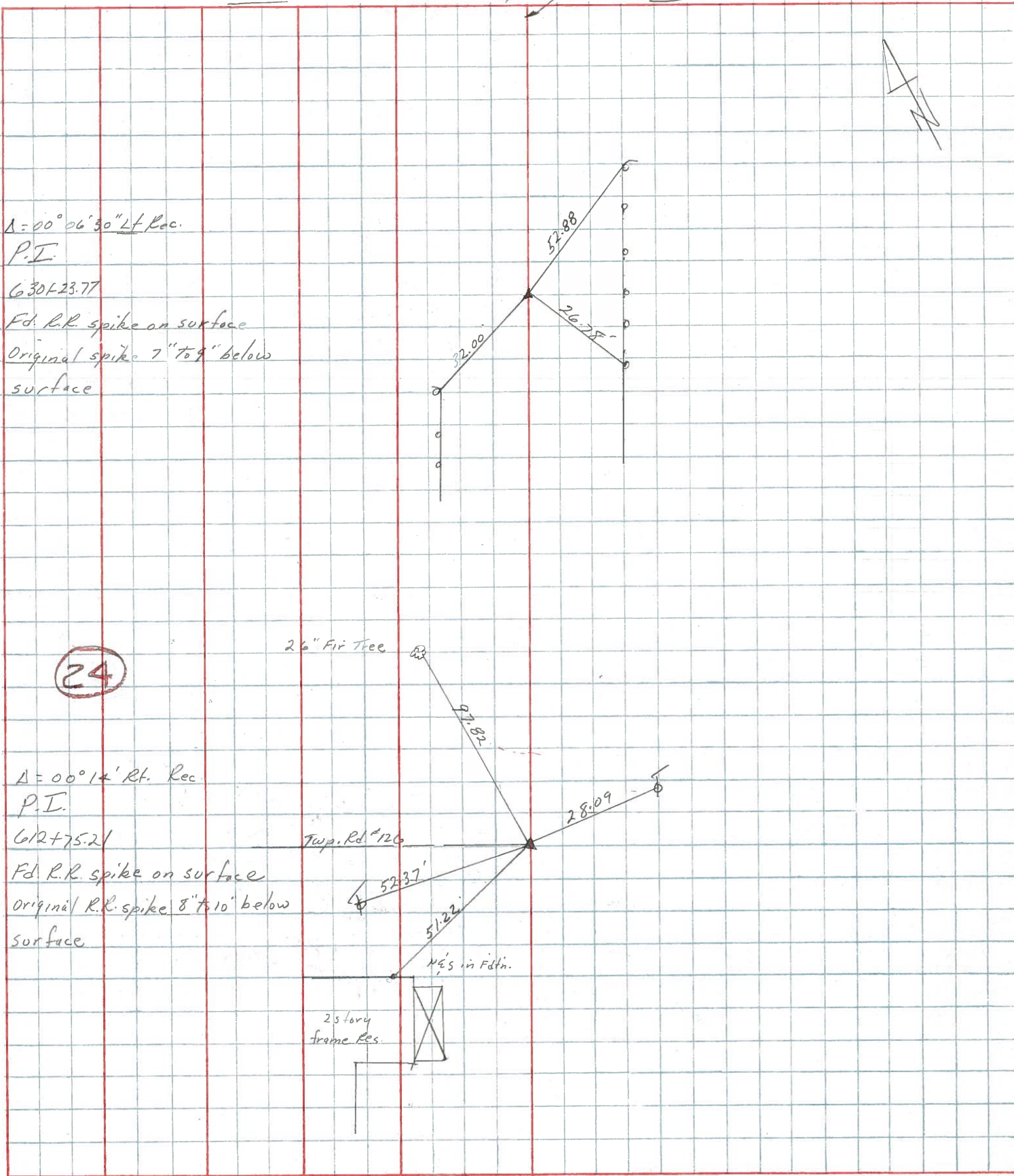




PERSONNEL	TITLE	PERSONNEL	TITLE
Cronin			
Ripple			
Geyman			
Barbour			

COUNTY Seneca DATE 3/15/85  
 S. R. # 4 WEATHER sunny  
 SEC. Colv. Sen. 4-11.80 TEMP. 42°

DESCRIPTION Ties for Control Points JOB NO. \_\_\_\_\_



(24)

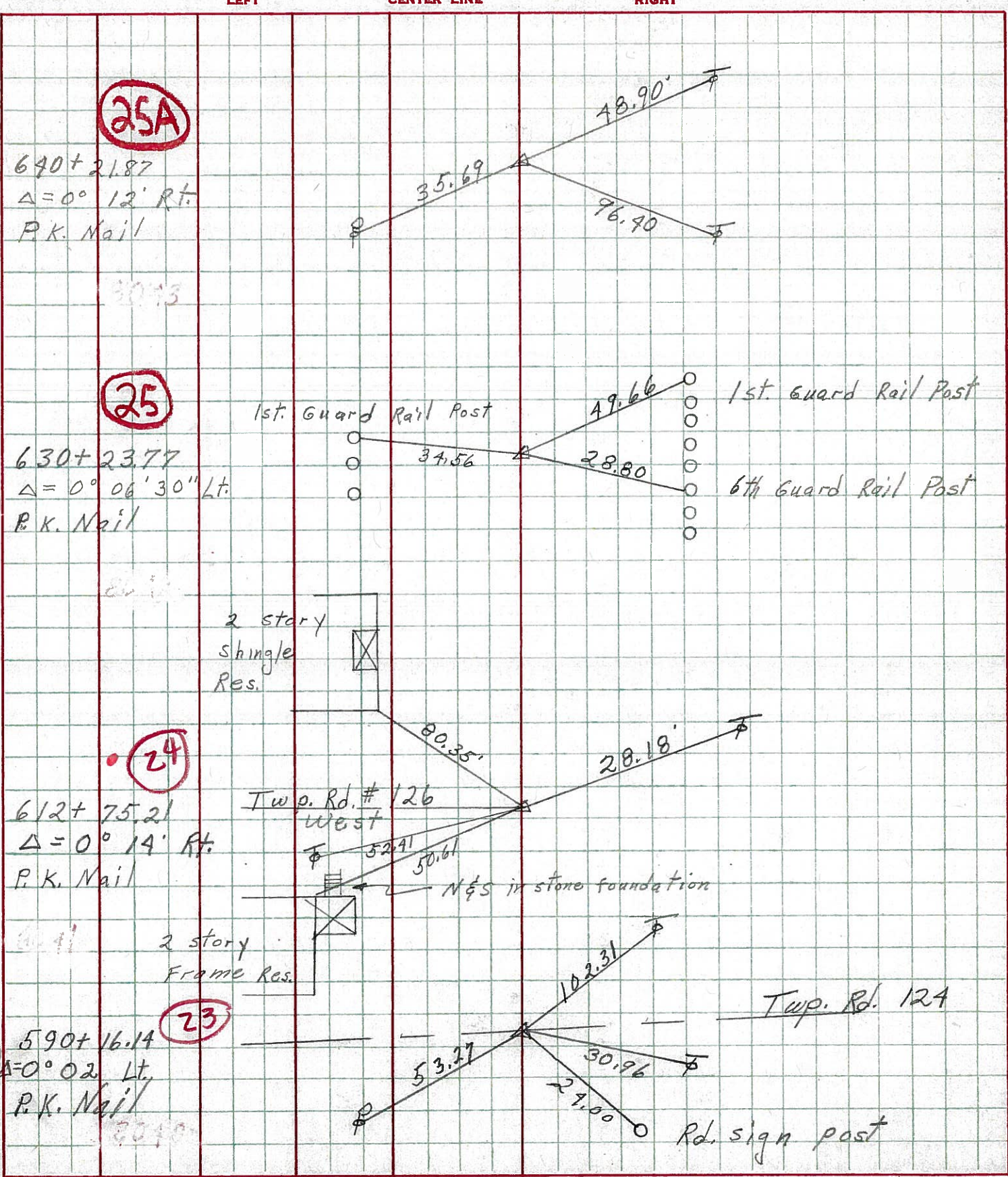


PERSONNEL TITLE PERSONNEL TITLE  
 Schneider \_\_\_\_\_ Potts \_\_\_\_\_  
 Mosser \_\_\_\_\_  
 Barbour \_\_\_\_\_  
 Redding \_\_\_\_\_

COUNTY Seneca DATE 10-3-68  
 S. R. 4 WEATHER windy  
 SEC. \_\_\_\_\_ TEMP. 50°

DESCRIPTION Ties for Control Points

JOB NO. \_\_\_\_\_





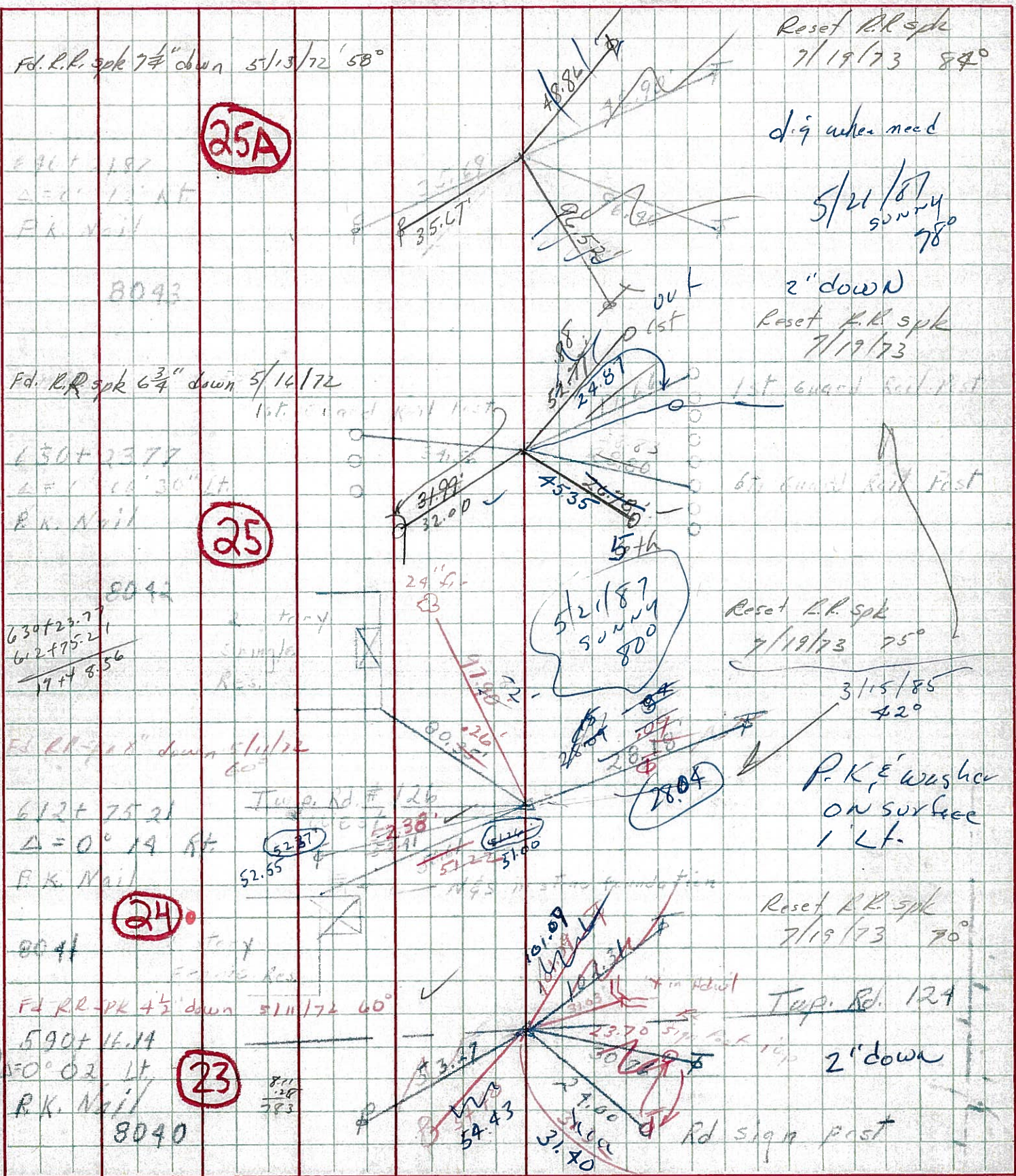
PERSONNEL TITLE PERSONNEL TITLE

COUNTY Scheneca DATE 10-3-68

S. R. 4 WEATHER Windy

SEC. \_\_\_\_\_ TEMP. 30°

DESCRIPTION Ties for Control Points JOB NO. \_\_\_\_\_





PERSONNEL TITLE PERSONNEL TITLE

COUNTY Seneca

DATE

E Krabill  
T. Kowalewski  
D. Brooks

S. R. 4

WEATHER

SEC.

TEMP.

DESCRIPTION

LEFT

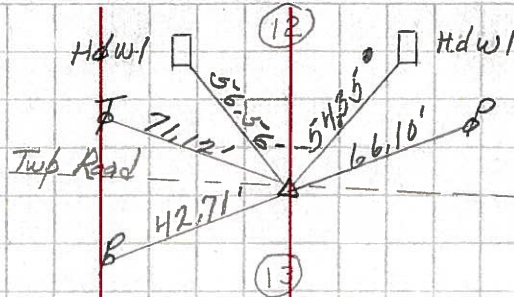
CENTER LINE

RIGHT

JOB NO.

562+07.54 #261  
P.I.  $\Delta=0^{\circ}-05'-00''$ LT  
P.k. nail

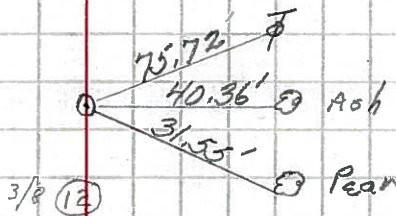
22



1-22-64

573+04.22 #262  
P.O.T.  $\Delta=0^{\circ}-00'-00''$   
P.k. nail

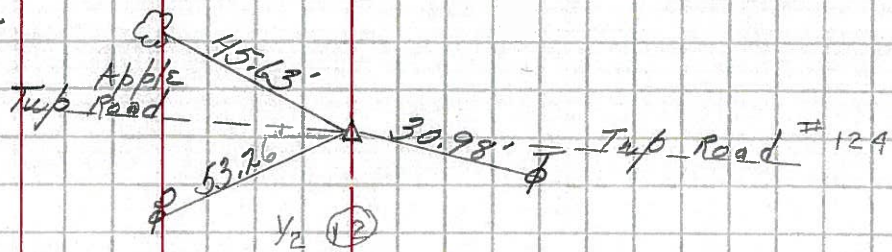
22A



1-22-64

590+16.14 #263  
P.I.  $\Delta=0^{\circ}-02'-00''$ LT  
P.k. nail

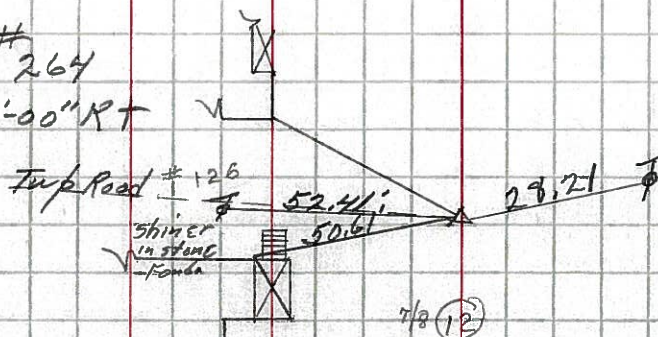
23



1-22-64

612+75.21 #264  
P.I.  $\Delta=0^{\circ}-14'-00''$ RT  
P.k. nail

24



1-22-64

