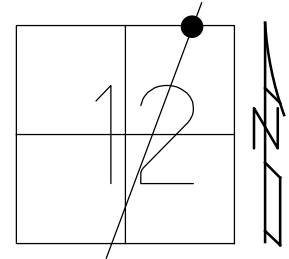


O.D.O.T. DISTRICT 2 SURVEY OFFICE (USE ONLY)

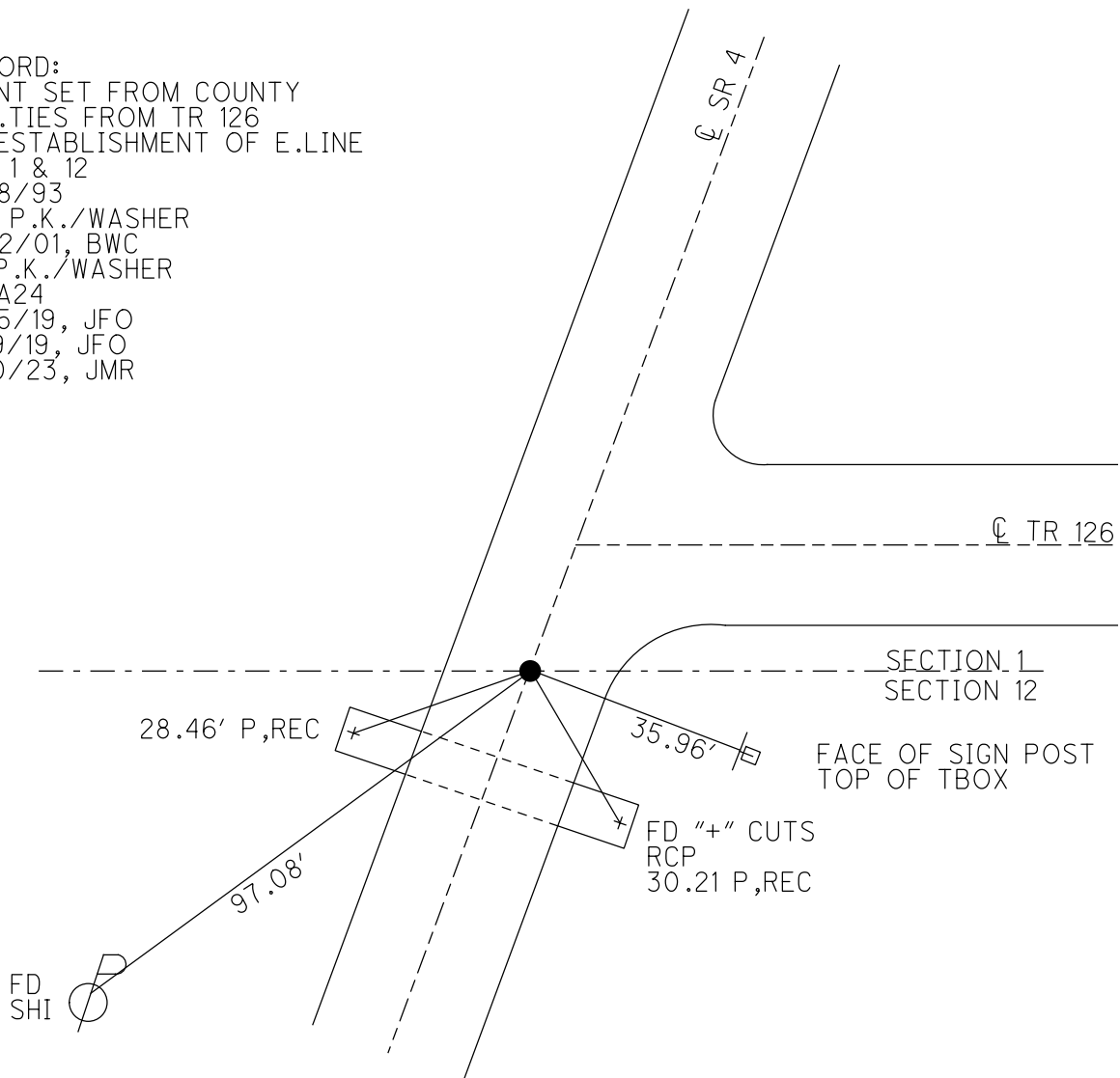
PERSONNEL _____ REFERENCE NO. 24 A SHEET 49 OF 56
 NOTES CORDES DATE 6/1/01 ROUTE SR 4
 H.C. BROWN WEATHER CLOUDY COUNTY SENECA
 R.C. HOMAN TEMP. 60° TOWNSHIP REED
 DWG BY NASON PID PAVETRAIN SECTION 12
 T 2 N R 17 E

TYPE MONUMENT P.K./WASHER
 ON SURFACE - ~~BELOW~~ ON _____
 OFFSET \odot PAVEMENT 0.5' LT : ~~RT~~
12' TO LT EDGE PAVEMENT
 STATION: 620+32

HORZ.DATUM: NAD83 (2011) GEOID: 2012A
 GRID: NORTHING: 541787.615 EASTING: 1873131.075



RECORD:
 POINT SET FROM COUNTY
 REF. TIES FROM TR 126
 RE-ESTABLISHMENT OF E.LINE
 SEC 1 & 12
 7/28/93
 SET P.K./WASHER
 7/02/01, BWC
 FD P.K./WASHER
 REFA24
 2/25/19, JFO
 8/19/19, JFO
 1/20/23, JMR

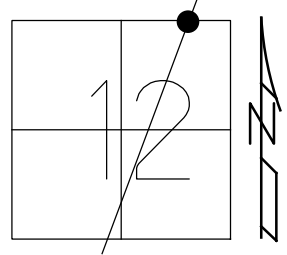


O.D.O.T. DISTRICT 2 SURVEY OFFICE (USE ONLY)

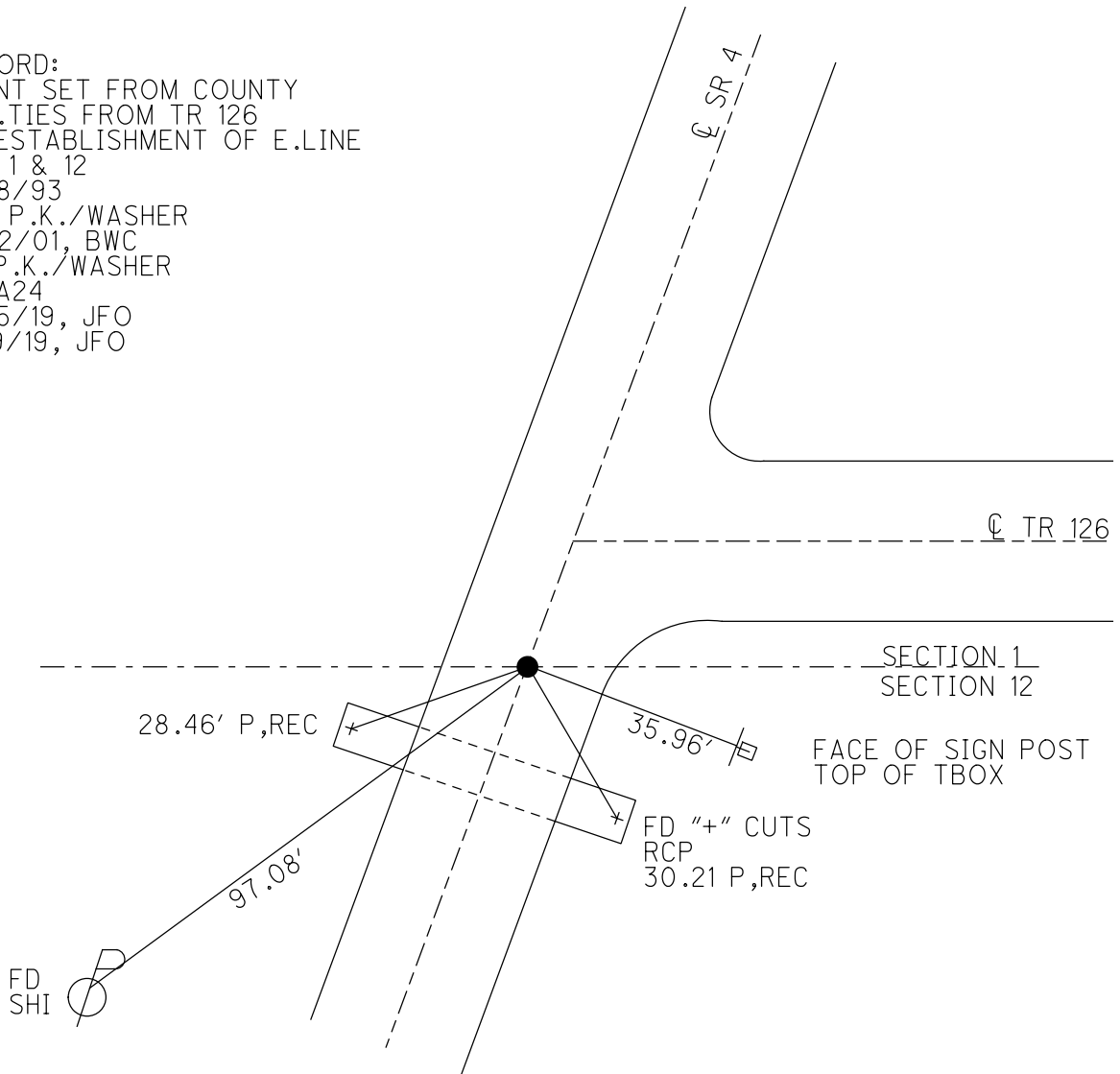
PERSONNEL _____ REFERENCE NO. 24 A SHEET 8 OF 15
 NOTES CORDES DATE 6/1/01 ROUTE SR 4
 H.C. BROWN WEATHER CLOUDY COUNTY SENECA
 R.C. HOMAN TEMP. 60° TOWNSHIP REED
 DWG BY NASON PID 107060 SECTION 12
 T 2 N R 17 E

TYPE MONUMENT P.K./WASHER
 ON SURFACE - ~~BELOW~~ ON
 OFFSET 12' TO LT EDGE PAVEMENT
 STATION: 620+32

HORZ.DATUM: NAD83 (2011) GEOID: 2012A
 GRID: NORTHING: 541787.615 EASTING: 1873131.075



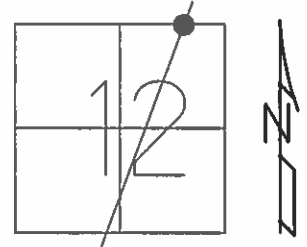
RECORD:
 POINT SET FROM COUNTY
 REF. TIES FROM TR 126
 RE-ESTABLISHMENT OF E.LINE
 SEC 1 & 12
 7/28/93
 SET P.K./WASHER
 7/02/01, BWC
 FD P.K./WASHER
 REFA24
 2/25/19, JFO
 8/19/19, JFO



O.D.O.T. DISTRICT 2 SURVEY OFFICE (USE ONLY)

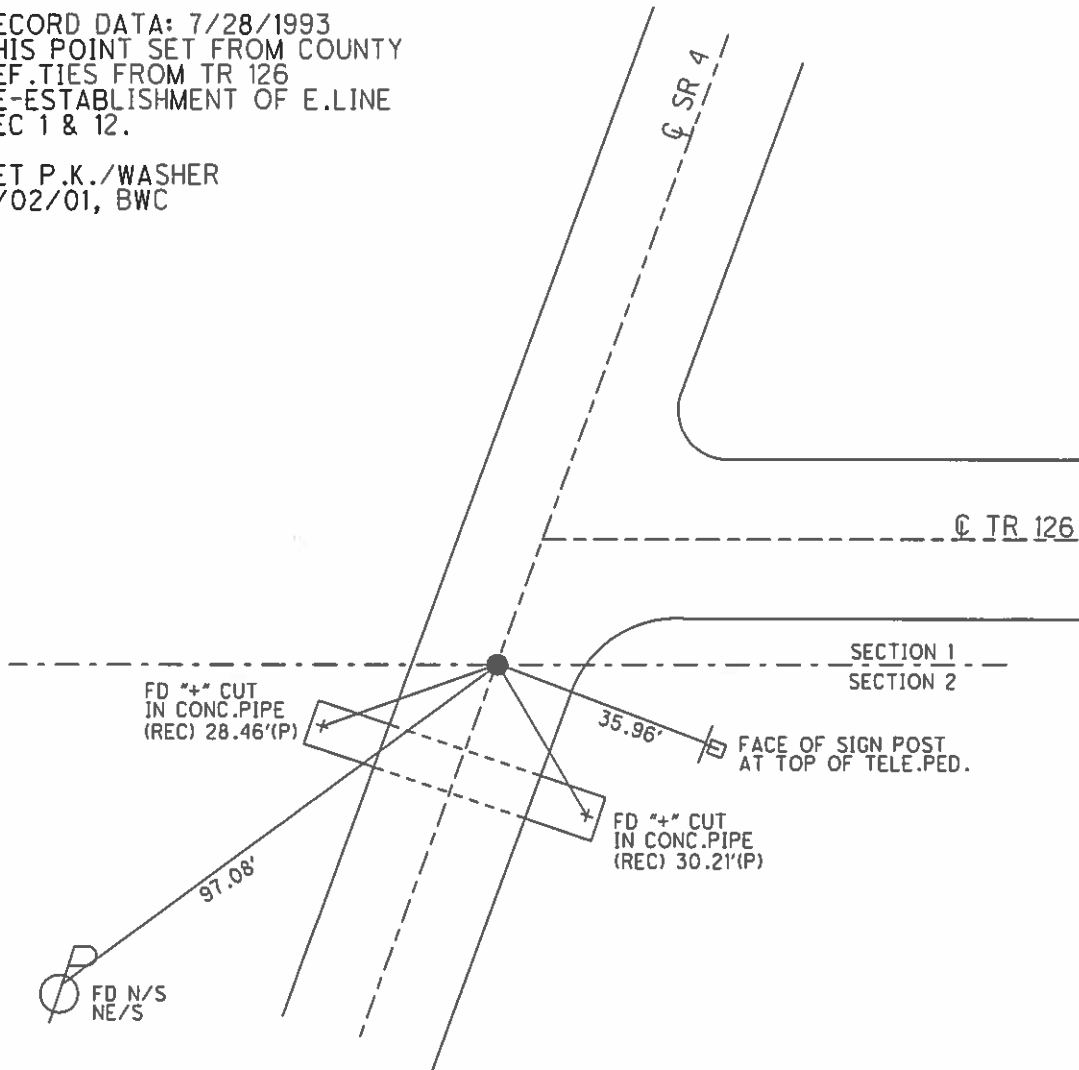
PERSONNEL _____ REFERENCE NO. 24 A SHEET 49 OF 56
 NOTES CORDES DATE 6/1/01 ROUTE SR 4
 H.C. BROWN WEATHER CLOUDY COUNTY SENECA
 R.C. HOMAN TEMP. 60° TOWNSHIP REED
 _____ SECTION 12
 _____ T 2 N R 17 E

TYPE MONUMENT P.K./WASHER
 ON SURFACE - ~~BELOW~~ ON _____
 LEFT - ☉ PAV'T - ~~RIGHT~~ 0.5'
12 TO LT EDGE PAVEMENT
 S.L.M. 620+32
 GRID: NORTHING: _____ EASTING: _____



RECORD DATA: 7/28/1993
 THIS POINT SET FROM COUNTY
 REF. TIES FROM TR 126
 RE-ESTABLISHMENT OF E.LINE
 SEC 1 & 12.

SET P.K./WASHER
 7/02/01, BWC



O.D.O.T. DISTRICT 2 SURVEY OFFICE

PERSONNEL

REFERENCE NO. 24.A

SHEET 13 OF 19

NOTES CORDES

H.C. BROWN

R.C. HOMAN

DATE 6/1/01

WEATHER cloudy

TEMP. 60°

ROUTE 4

COUNTY SENECA

TOWNSHIP TR 12 E

SECTION 12

TR N R 12 E

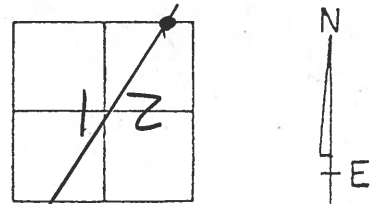
TYPE MONUMENT PK 3 WASHER

ON SURFACE - ~~NO~~ YES

LEFT - & PAV'T. - ~~NO~~ 0.5

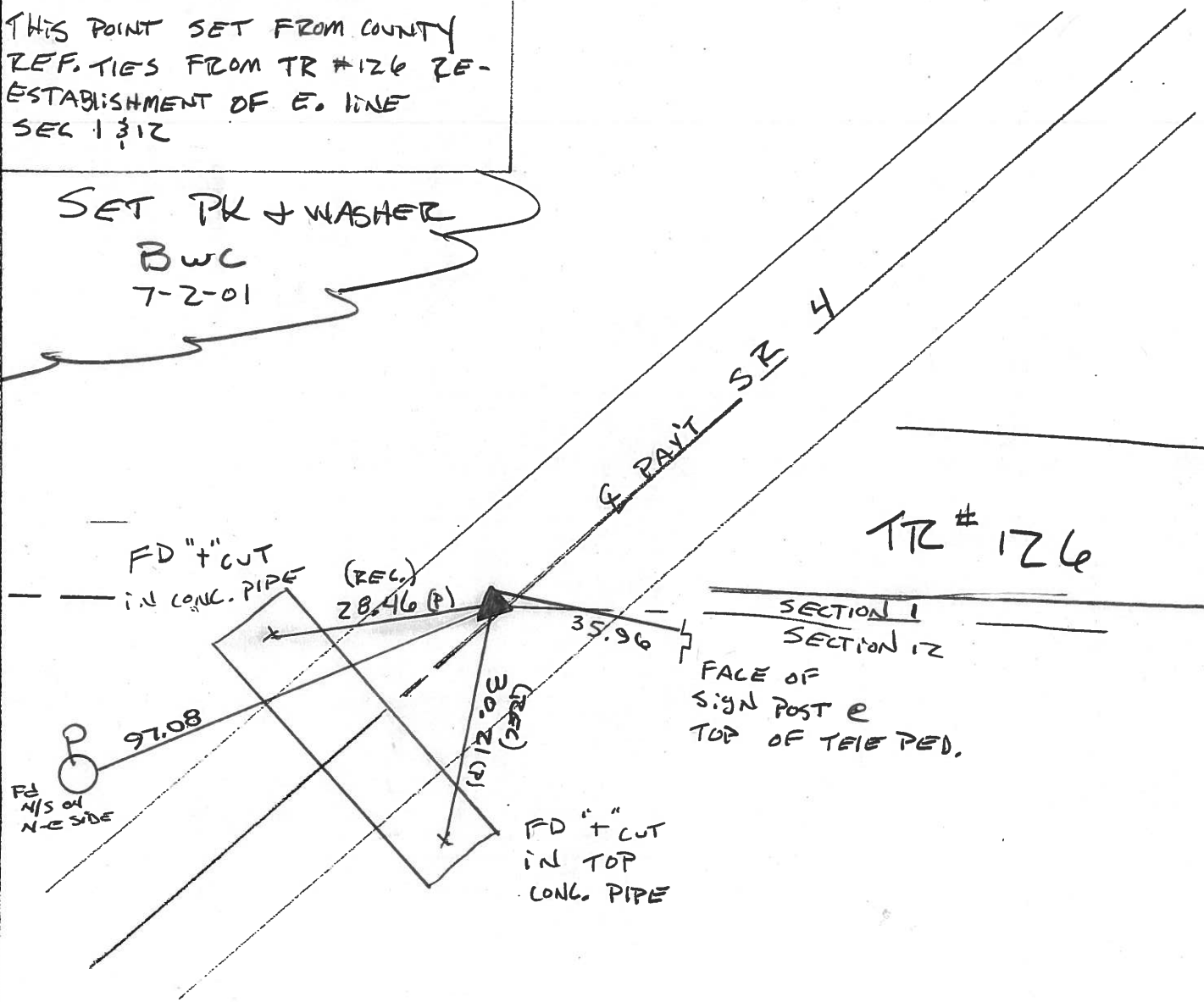
12 TO LT EDGE PAVEMENT

S.L.M. 620+32



RECORD DATA 7-28-1993
 THIS POINT SET FROM COUNTY
 REF. TIES FROM TR #126 RE-
 ESTABLISHMENT OF E. LINE
 SEC 13 12

SET PK 3 WASHER
 BWC
 7-2-01



O.D.O.T. DISTRICT 2 SURVEY OFFICE

PERSONNEL

REFERENCE NO. 24-A

SHEET 44 OF 50

NOTES CHENEY

H.C. RIPPLE

DATE 7-28-1993

ROUTE #4

R.C. BARBOUR

WEATHER FAIR

COUNTY SENECA

GEYMAN

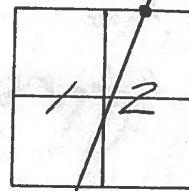
TEMP. 85°

TOWNSHIP REED

SECTION 12

T 2 N R 17 E

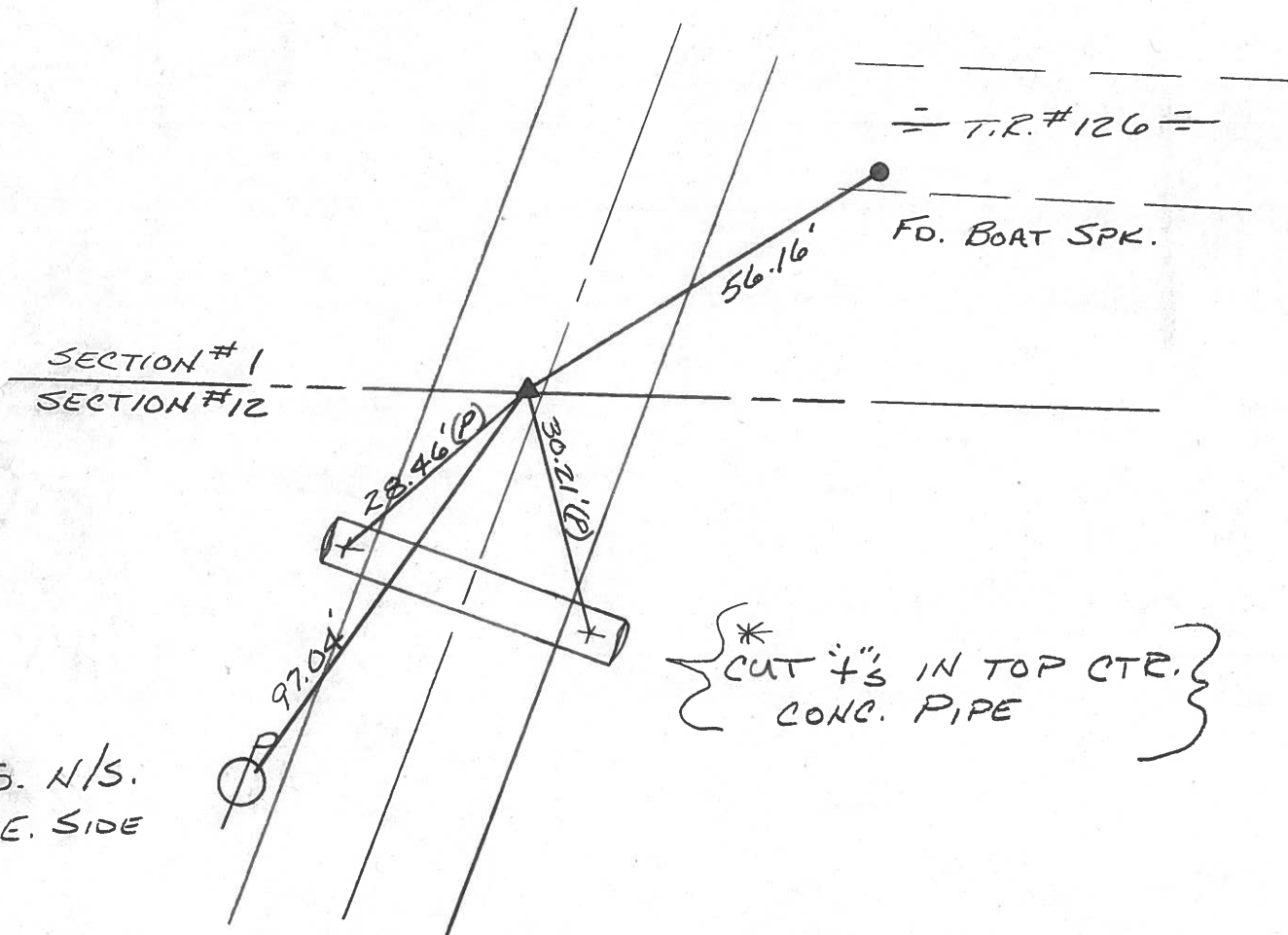
TYPE MONUMENT Sp. HEAD SPK./WASHER
 ON SURFACE - ~~BELOW~~ ON
 LEFT- & PAV'T. - ~~RIGHT~~ 1'
12' TO RT. EDGE PAVEMENT
 S.L.M. 620+32



RECORD: 8-17-1988

THIS POINT SET FROM
 VARIOUS COUNTY TIES
 FROM T.R. #126 & RE-
 ESTABLISHMENT OF E.
 LINE SEC. #1 & 12.

SET PK/WASHER
 10-13-1993
 RCC



FD. N/S.
 N.E. SIDE

* CUT 4" IN TOP CTR.
 CONC. PIPE

O.D.O.T. DISTRICT 2 SURVEY OFFICE

PERSONNEL _____

REFERENCE NO. _____

SHEET _____ OF _____

NOTES CRONIN

H.C. RIPPLE

R.C. BARBOUR

GEYMAN

DATE 8/17/88

WEATHER SUNNY

TEMP. 80°

ROUTE #4

COUNTY SENECA

TOWNSHIP REED

SECTION 12

T 2 N R 17 E

TYPE MONUMENT SET SQ HEADED SPK. & WASHER

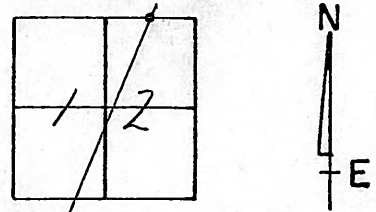
ON SURFACE - BELOW _____

LEFT - € PAV'T. - RIGHT it

TO _____ EDGE PAVEMENT

S.L.M. _____

24A



THIS POINT SET FROM
 VARIOUS COUNTY TIES FROM
 T.R. #126, Re-ESTABLISHMENT
 OF E. LINE SEC. #1 & #12

SEC. 1
 SEC. 12

97.06'

56.15'

set boat spk.

T.R. #126

125.69' 22" POPULAR



95.84'