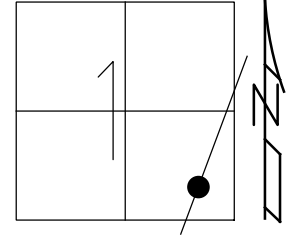


O.D.O.T. DISTRICT 2 SURVEY OFFICE (USE ONLY)

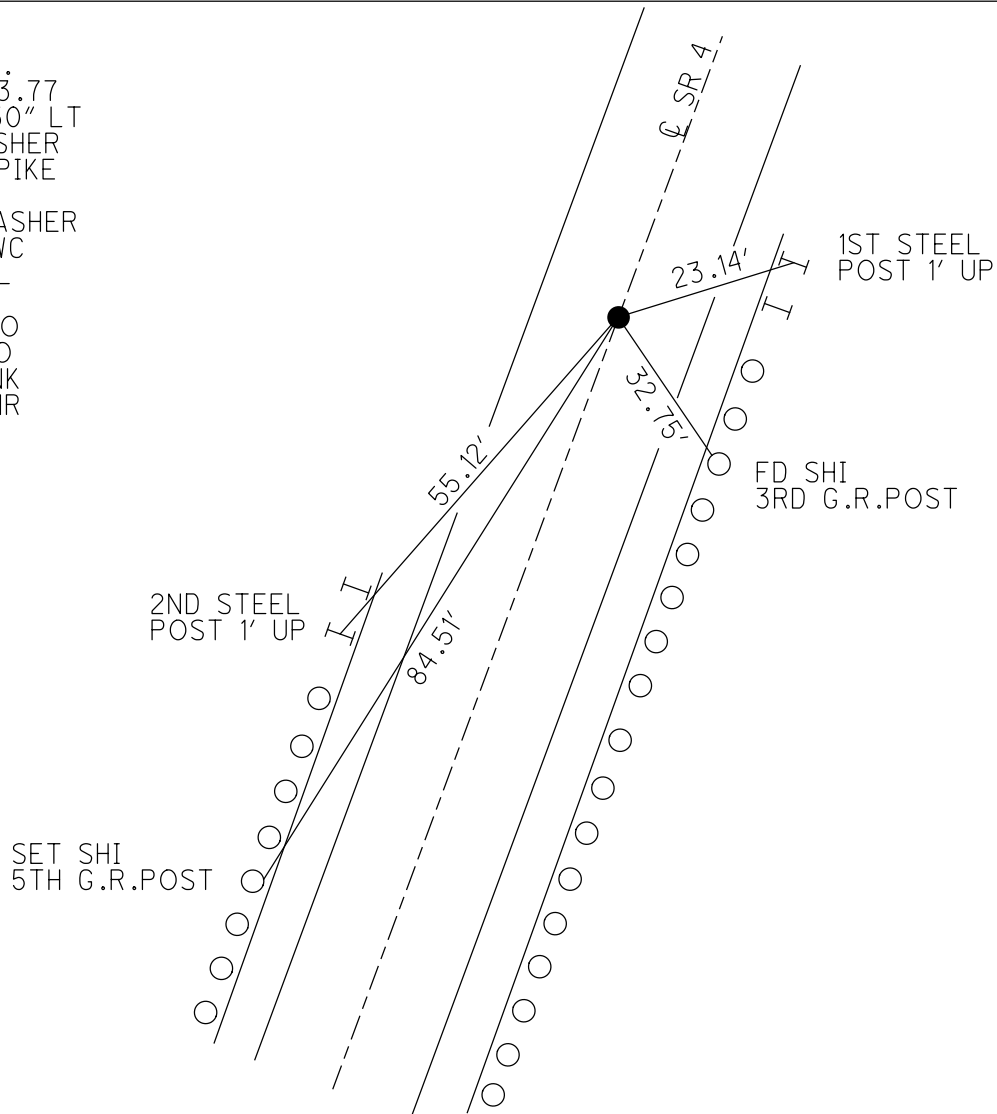
PERSONNEL _____ REFERENCE NO. 25 SHEET 50 OF 56
 NOTES CORDES DATE 6/1/01 ROUTE SR 4
 H.C. BROWN WEATHER CLOUDY COUNTY SENECA
 R.C. HOMAN TEMP. 60° TOWNSHIP REED
 DWG BY NASON PID PAVETRAIN SECTION 1
 T 2 N R 17 E

TYPE MONUMENT P.K./WASHER
 ON SURFACE - ~~BELOW~~ ON _____
 OFFSET \varnothing PAVEMENT ON _____ LT : RT
 - TO - EDGE PAVEMENT
 STATION: 632+73



HORIZ.DATUM: NAD83 (2011) GEOID: 2012A
 GRID: NORTHING: 542951.553 EASTING: 1873546.076

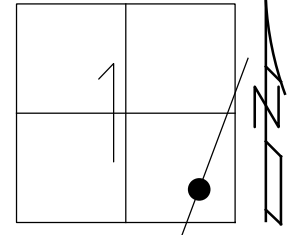
RECORD: P.I.
 STA. 630+23.77
 $\Delta = 00^{\circ}06' 30''$ LT
 FD P.K./WASHER
 ATOP R.R.SPIKE
 5/21/87
 SET P.K./WASHER
 7/02/01, BWC
 FD P.K. NAIL
 REF25
 2/26/19, JFO
 8/19/19, JFO
 FD P.K.SHANK
 1/20/23, JMR



O.D.O.T. DISTRICT 2 SURVEY OFFICE (USE ONLY)

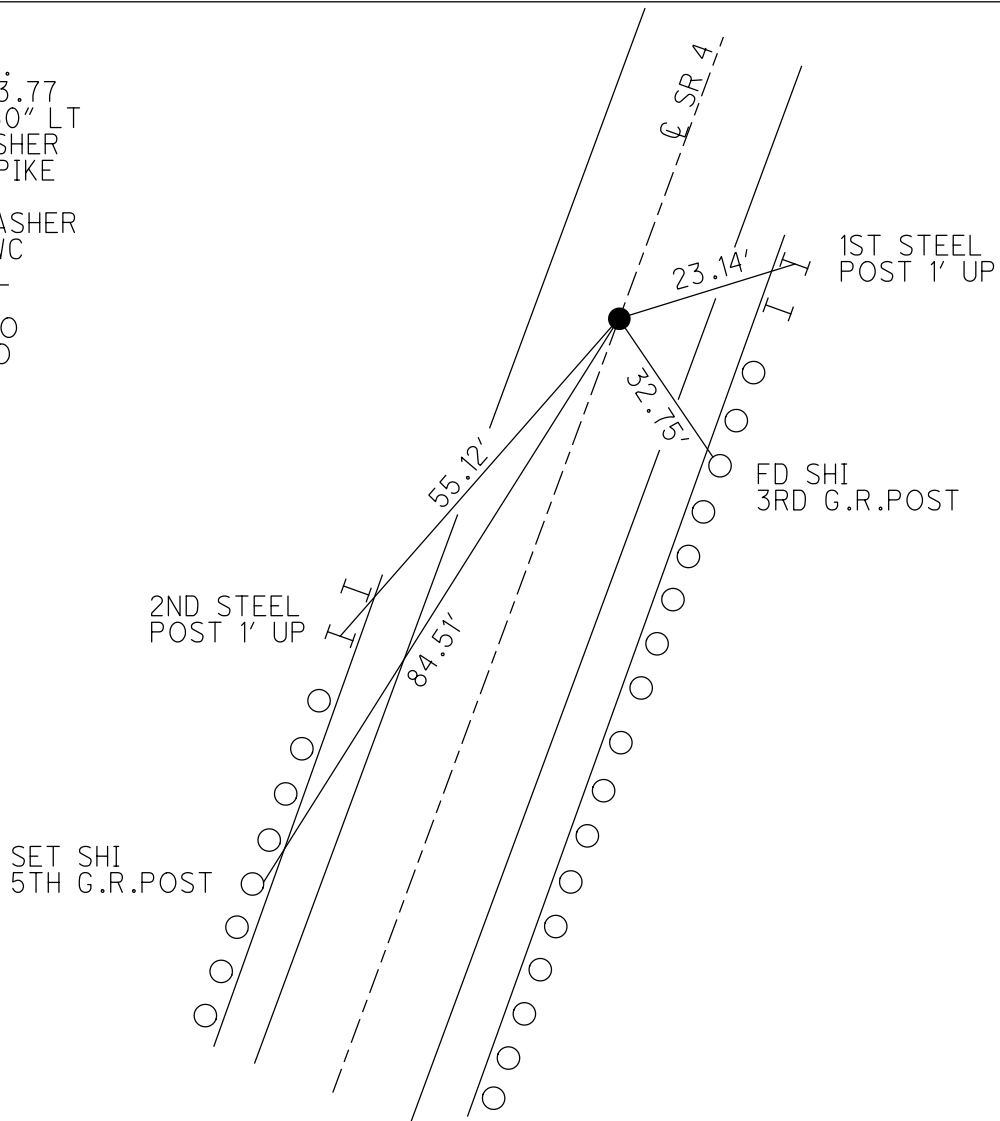
PERSONNEL _____ REFERENCE NO. 25 SHEET 9 OF 15
 NOTES CORDES DATE 6/1/01 ROUTE SR 4
 H.C. BROWN WEATHER CLOUDY COUNTY SENECA
 R.C. HOMAN TEMP. 60° TOWNSHIP REED
 DWG BY NASON PID 107060 SECTION 1
 T 2 N R 17 E

TYPE MONUMENT P.K./WASHER
 ON SURFACE - ~~BELOW~~ ON
 OFFSET \varnothing PAVEMENT ON LT : RT
- TO - EDGE PAVEMENT
 STATION: 632+73



HORZ.DATUM: NAD83 (2011) GEOID: 2012A
 GRID: NORTHING: 542951.553 EASTING: 1873546.076

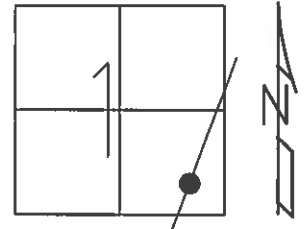
RECORD: P.I.
 STA. 630+23.77
 $\Delta = 00^{\circ}06'30''$ LT
 FD P.K./WASHER
 ATOP R.R.SPIKE
 5/21/87
 SET P.K./WASHER
 7/02/01, BWC
 FD P.K. NAIL
 REF25
 2/26/19, JFO
 8/19/19, JFO



O.D.O.T. DISTRICT 2 SURVEY OFFICE (USE ONLY)

PERSONNEL _____ REFERENCE NO. 25 SHEET 50 OF 56
 NOTES CORDES DATE 6/01/01 ROUTE SR 4
 H.C. BROWN WEATHER CLOUDY COUNTY SENECA
 R.C. HOMAN TEMP. 60° TOWNSHIP REED
 _____ SECTION 1
 _____ T 2 N R 17 E

TYPE MONUMENT P.K./WASHER
 ON SURFACE - ~~BELOW~~ ON
 LEFT - ☉ PAV'T - RIGHT ON
_____ TO _____ EDGE PAVEMENT
 S.L.M. 632+73
 GRID: NORTHING: _____ EASTING: _____



RECORD:
 STA. 630+23.77
 P.K./WASHER ATOP
 R.R.SPIKE, 5/21/87
 P.I. Δ = 00° 06' 30" LT

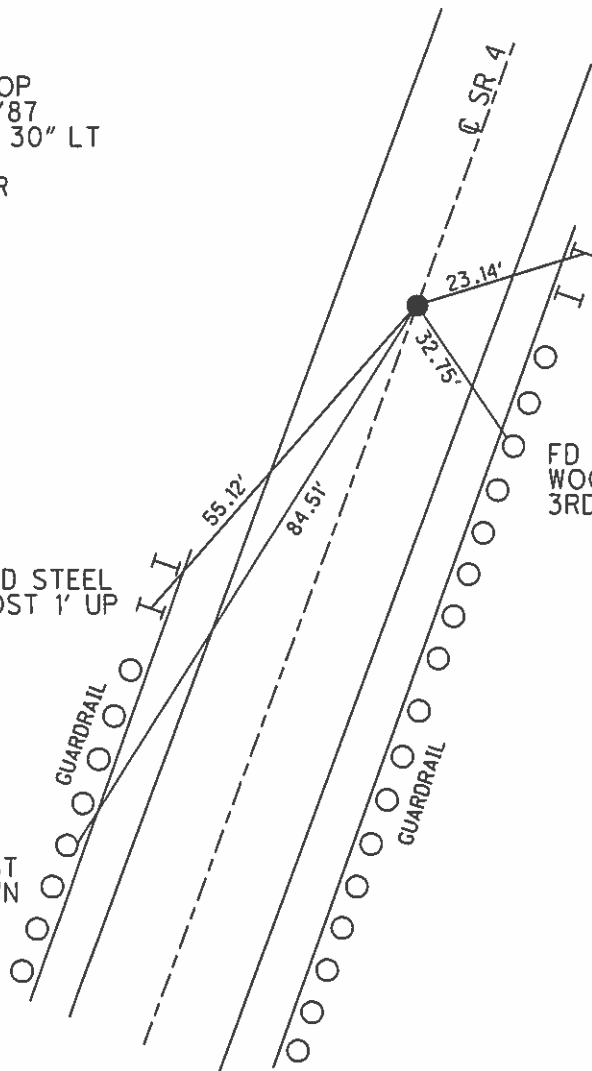
SET P.K./WASHER
 7/02/01, BWC

SET N/S IN
 WOOD G.R. POST
 5TH POST DOWN

2ND STEEL
 POST 1' UP

1ST STEEL
 POST 1' UP

FD N/S IN
 WOOD G.R. POST
 3RD POST DOWN



O.D.O.T. DISTRICT 2 SURVEY OFFICE

PERSONNEL

REFERENCE NO. 215

SHEET 14 OF 19

NOTES Cordes

H.C. Brown

R.C. Homan

DATE 6-1-01

WEATHER Cloudy

TEMP. 60°

ROUTE 4

COUNTY Seneca

TOWNSHIP Reed

SECTION 1

T2 N R 17 E

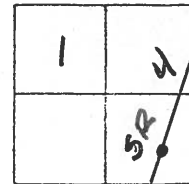
TYPE MONUMENT PK/Washer

ON SURFACE - ~~BROWN~~ ON

~~SET - & PAW'T. - RIGHT~~ ON

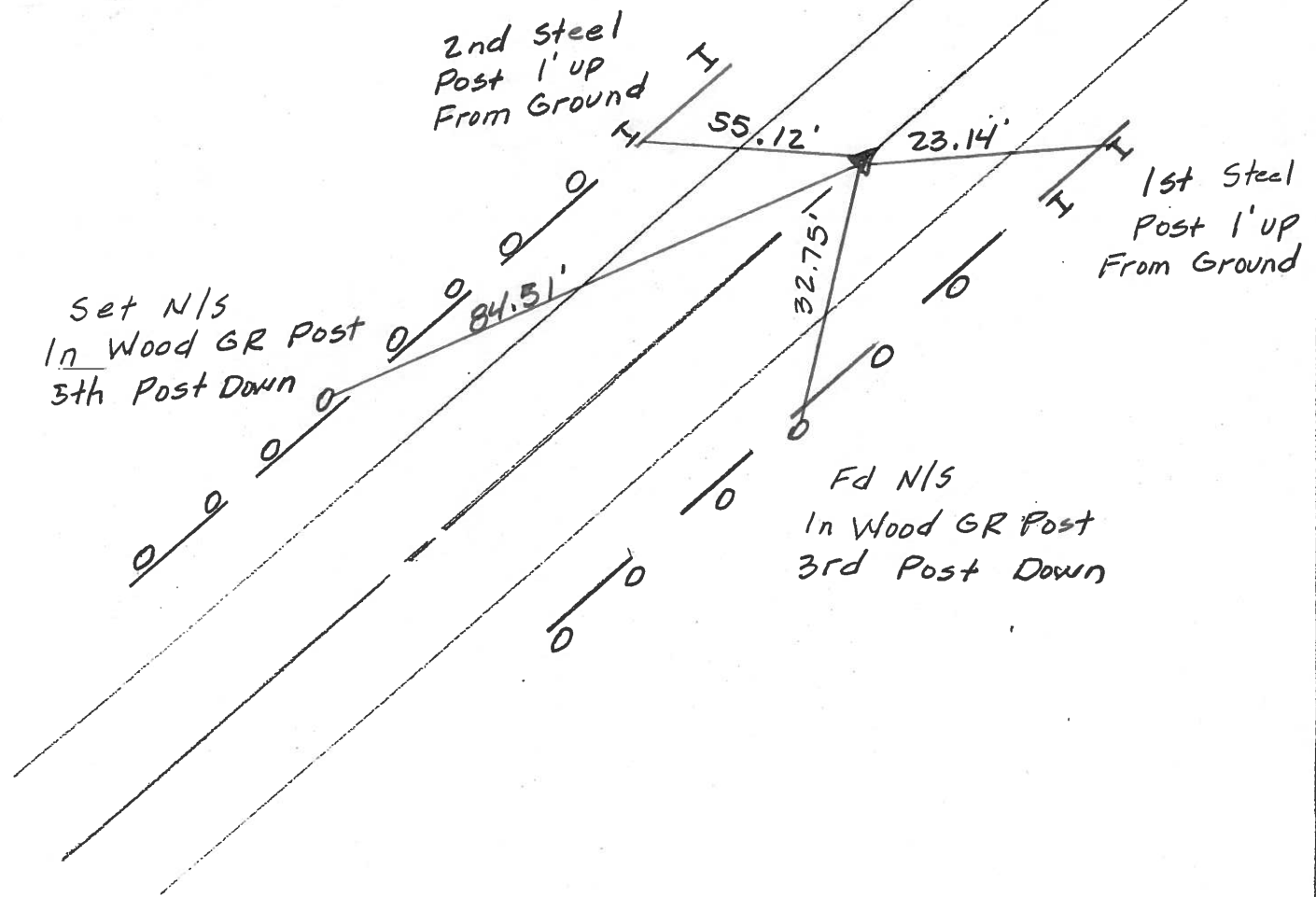
11.5 TO RT EDGE PAVEMENT

S.L.M. 632+73



Record 5-21-1987
Sta 630+23.77
PK Washer Atop RR Spk
P.I. $\Delta = 00^{\circ} 06' 30''$ Lt.

Set PK/Washer
7-2-01 BWC



O.D.O.T. DISTRICT 2 SURVEY OFFICE

PERSONNEL

REFERENCE NO. 25

SHEET 45 OF 50

NOTES CHENEY

H.C. RIFFLE

DATE 7-28-1993

ROUTE #4

R.C. BARBOUR

WEATHER FAIR

COUNTY SENECA

GEYMAN

TEMP. 85°

TOWNSHIP REED

SECTION 1

T 2 N R 17E

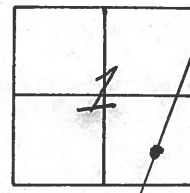
TYPE MONUMENT R.R. SPK.

~~ON~~ SURFACE - BELOW 2"

~~SET~~ - Q. PAV'T. - ~~RIGHT~~ ON

11.5' TO R.T. EDGE PAVEMENT

S.L.M. 632+73



RECORD: 5-21-1987

P.I. STA. 630+23.77

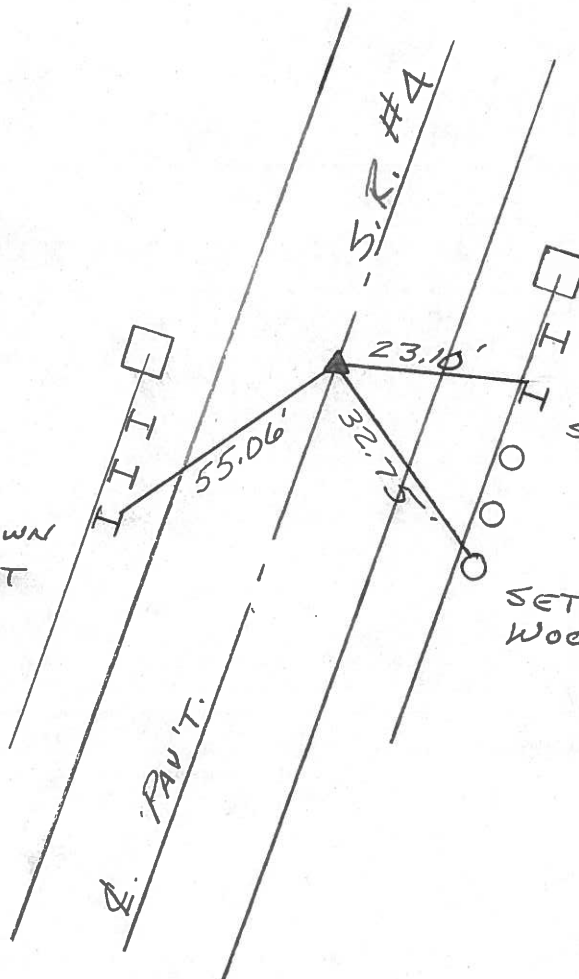
$\Delta = 00^{\circ}06'30''$ LT.

R.R. SPK. 8.75"

BELOW SURFACE

SET PK/WASHER
10-13-1993
RCC

USED COR. SHOWN
STEEL G.R. POST



USED COR. SHOWN
STEEL G.R. POST.

SET N/S. N.W. SIDE
WOOD G.R. POST.

O.D.O.T. DISTRICT 2 SURVEY OFFICE

PERSONNEL _____ REFERENCE NO. _____ SHEET 19 OF _____

NOTES Cronin DRAWN 12/09/87

H.C. Ripple DATE 5/21/87

R.C. Barbour WEATHER sunny

Geyman TEMP. 78°

ROUTE S.R.#4

COUNTY Seneca

TOWNSHIP Leed

SECTION 1

T2 N R 17 E

TYPE MONUMENT R.R. spike

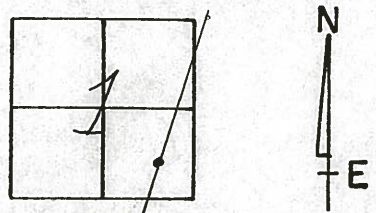
ON SURFACE - BELOW 2" below

LEFT - PAV'T. - RIGHT & Pav't.

TO EDGE PAVEMENT

S.L.M. _____

25

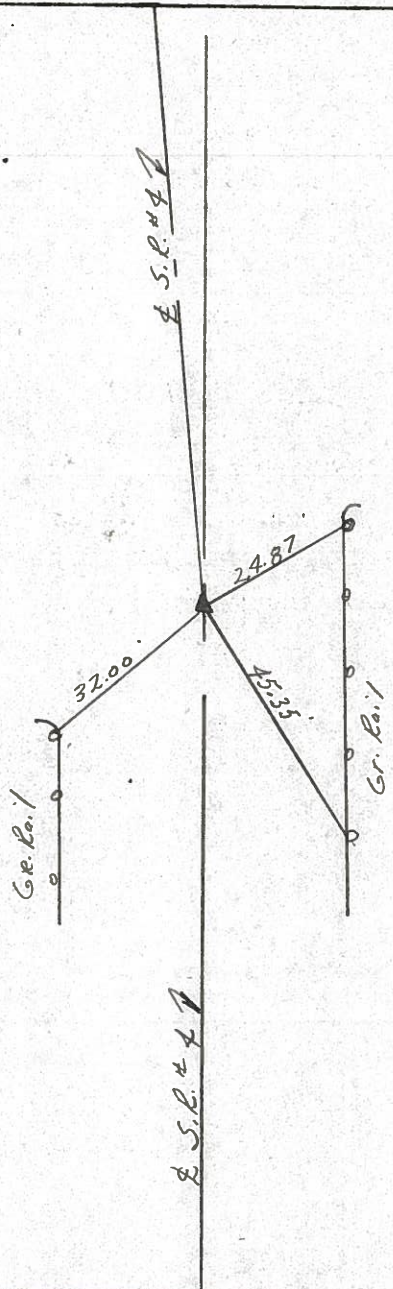


P.I. $A = 00^{\circ} 06' 30''$ Lt.

630 + 23.77

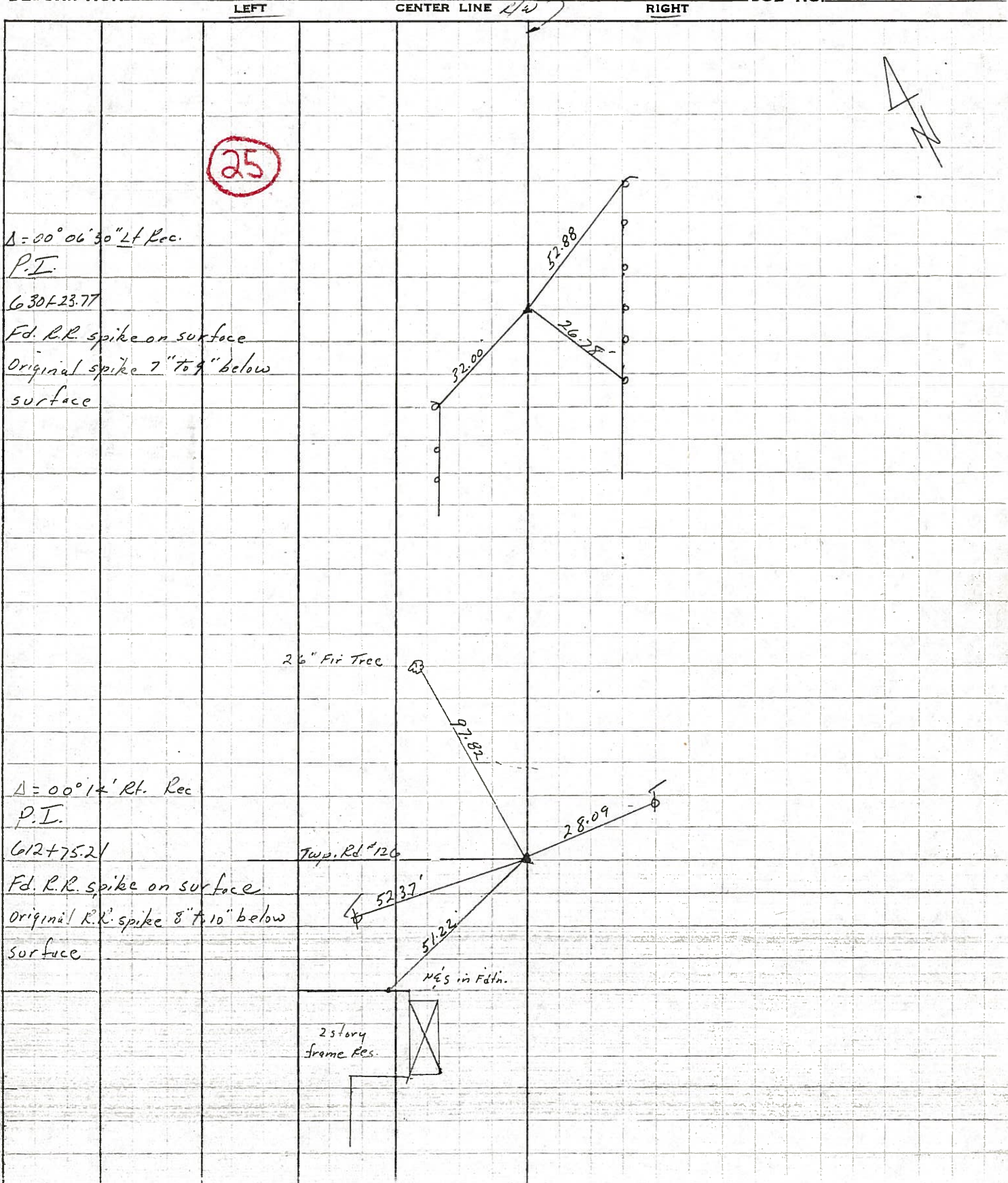
R.R. spike $8\frac{3}{4}''$ below

surface



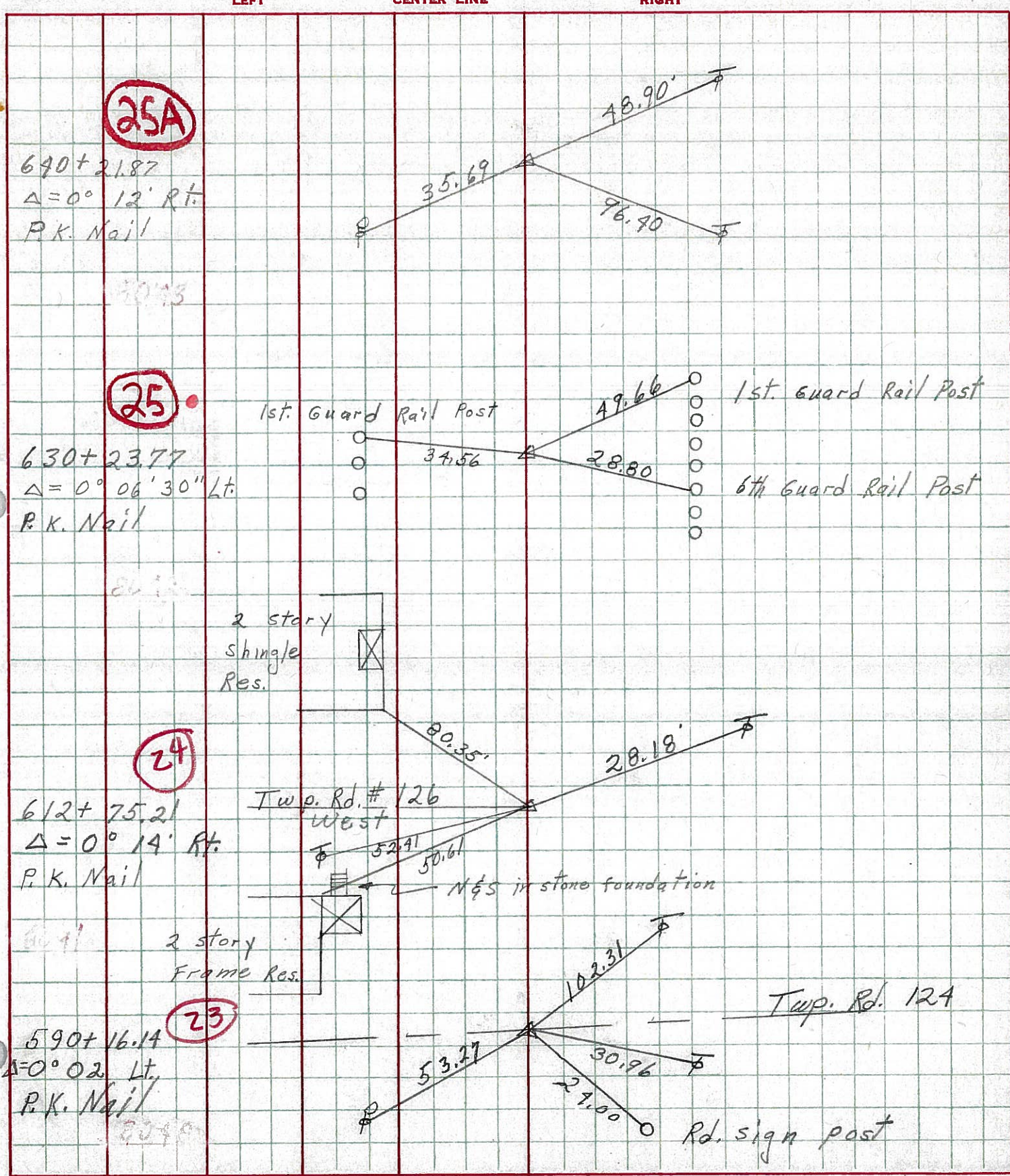
PERSONNEL	TITLE	PERSONNEL	TITLE	COUNTY	Seneca	DATE	3/15/85
Cronin				S. R.	# 4	WEATHER	SUNNY
Ripple				SEC.	Colv. Sen. 4-11.80	TEMP.	42°
Geyman							
Borbaur							

DESCRIPTION Ties for Control Points JOB NO. _____



PERSONNEL	TITLE	PERSONNEL	TITLE	COUNTY	DATE	S. R.	WEATHER	TEMP.
Schneider		Potts		Seneca	10-3-68	4	windy	50°
Mosser								
Barbour								
Redding								

DESCRIPTION Ties for Control Points JOB NO. _____



PERSONNEL TITLE PERSONNEL TITLE

F. Krabill

COUNTY Seneca

DATE

J. Kowalaski

S. R. 4

WEATHER

D. Brooks

SEC.

TEMP.

DESCRIPTION

LEFT

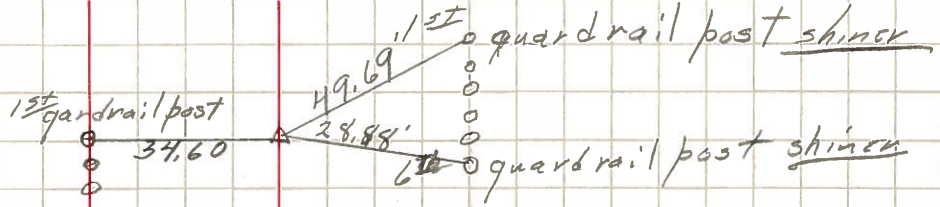
CENTER LINE

RIGHT

JOB NO.

630+23.27 #265
P.I. $\Delta=0^{\circ}16'-30''$ LT
P.K. nail

25

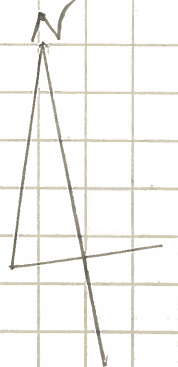
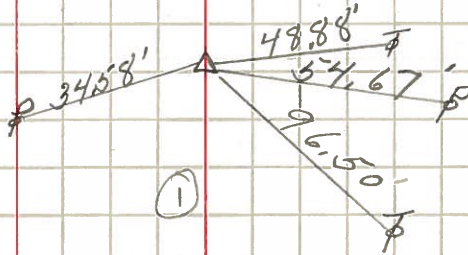


1-22-64

3/16 (1)

640+21.87 #266
P.I. $\Delta=0^{\circ}12'-00''$ RT
P.K. nail

25A

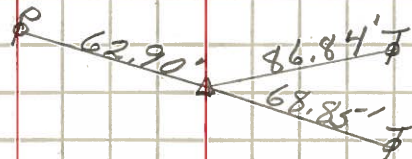


1-22-64

(1)

660+24.19 #267
P.I. $\Delta=0^{\circ}08'-30''$ LT
P.K. nail

26

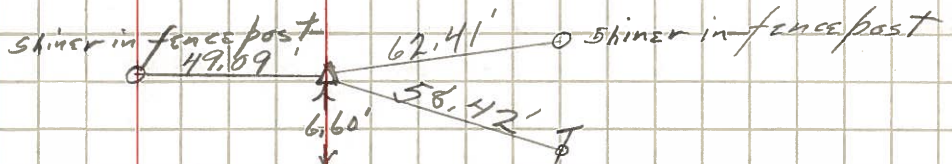


1-22-64

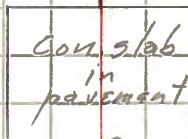
3/4 (6)

683+04.03 #268
P.I. $\Delta=0^{\circ}03'-00''$ LT
P.K. nail

26B



1-22-64



7/8 (6)

Thompson Twp.