

O.D.O.T. DISTRICT 2 SURVEY OFFICE (USE ONLY)

PERSONNEL

REFERENCE NO. 25 A

SHEET 51 OF 56

NOTES CORDES

DATE 6/1/01

ROUTE SR 4

H.C. BROWN

WEATHER CLOUDY

COUNTY SENECA

R.C. HOMAN

TEMP. 60°

TOWNSHIP REED

DWG BY NASON

PID PAVETRAIN

SECTION 1

T 2 N R 17 E

TYPE MONUMENT P.K./WASHER

ON SURFACE - ~~BELOW~~ ON

OFFSET \odot PAVEMENT 0.5' LT : RT

11.5' TO RT EDGE PAVEMENT

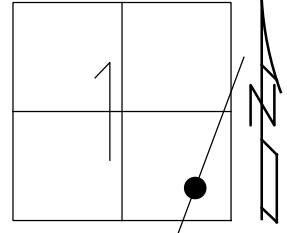
STATION: 642+77

HORIZ.DATUM: NAD83 (2011)

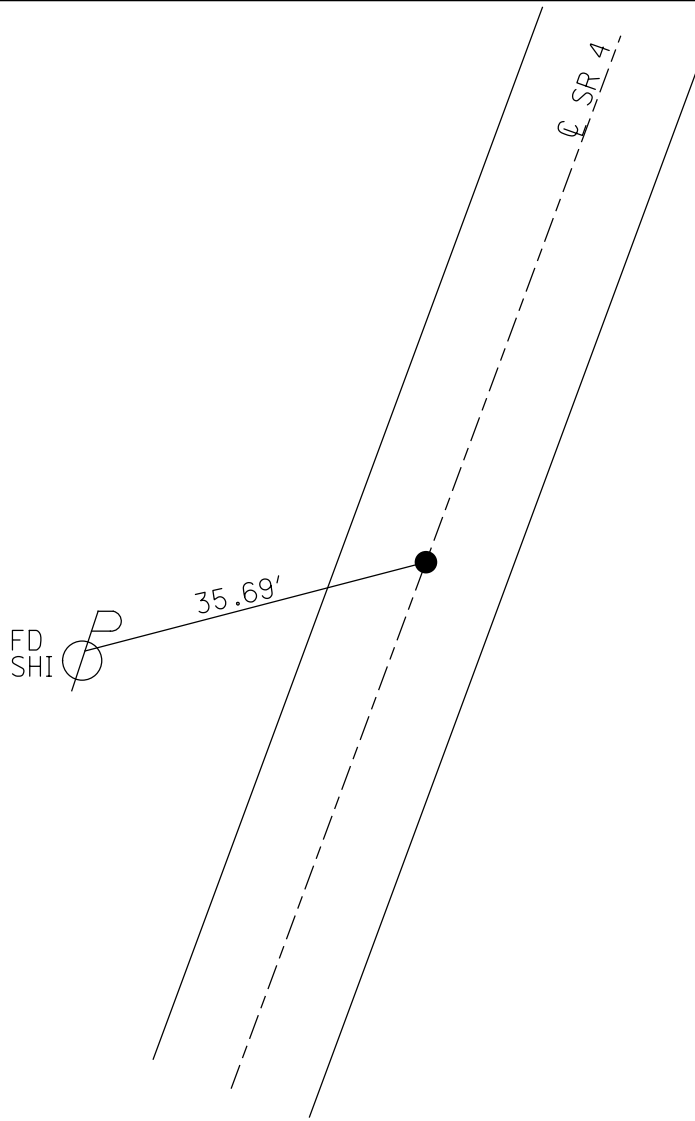
GEOID: 2012A

GRID: NORTHING: 543895.290

EASTING: 1873880.047



RECORD: P.I.
STA. 640+21.87
 $\Delta = 00^{\circ}12' 00''$ RT
7/28/93
SET P.K./WASHER
7/02/01, BWC
FD P.K./WASHER
REFA25
2/26/19, JFO
8/19/19, JFO
1/20/23, JMR



O.D.O.T. DISTRICT 2 SURVEY OFFICE (USE ONLY)

PERSONNEL

REFERENCE NO. 25 A

SHEET 10 OF 15

NOTES CORDES
 H.C. BROWN
 R.C. HOMAN

DATE 6/1/01
 WEATHER CLOUDY
 TEMP. 60°

ROUTE SR 4
 COUNTY SENECA
 TOWNSHIP REED
 SECTION 1
 T 2 N R 17 E

DWG BY NASON PID 107060

TYPE MONUMENT P.K./WASHER

ON SURFACE - ~~BELOW~~ ON

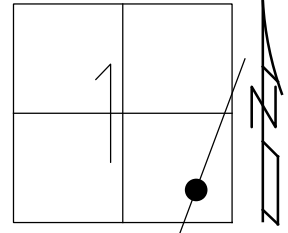
OFFSET Q PAVEMENT 0.5' LT : RT

11.5' TO RT EDGE PAVEMENT

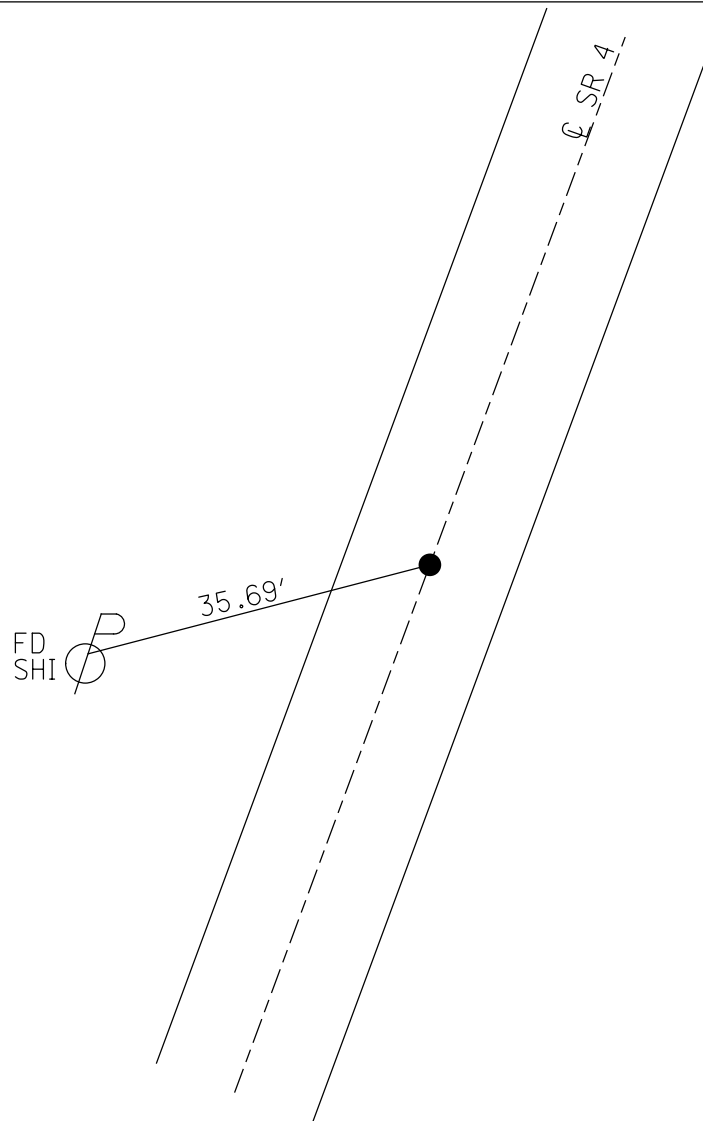
STATION: 642+77

HORZ.DATUM: NAD83 (2011) GEOID: 2012A

GRID: NORTHING: 543895.290 EASTING: 1873880.047



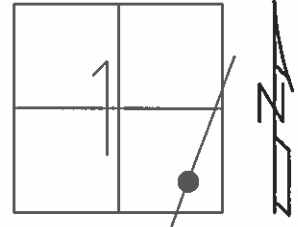
RECORD: P.I.
 STA. 640+21.87
 $\Delta = 00^{\circ}12' 00''$ RT
 7/28/93
 SET P.K./WASHER
 7/02/01, BWC
 FD P.K./WASHER
 REFA25
 2/26/19, JFO
 8/19/19, JFO



O.D.O.T. DISTRICT 2 SURVEY OFFICE (USE ONLY)

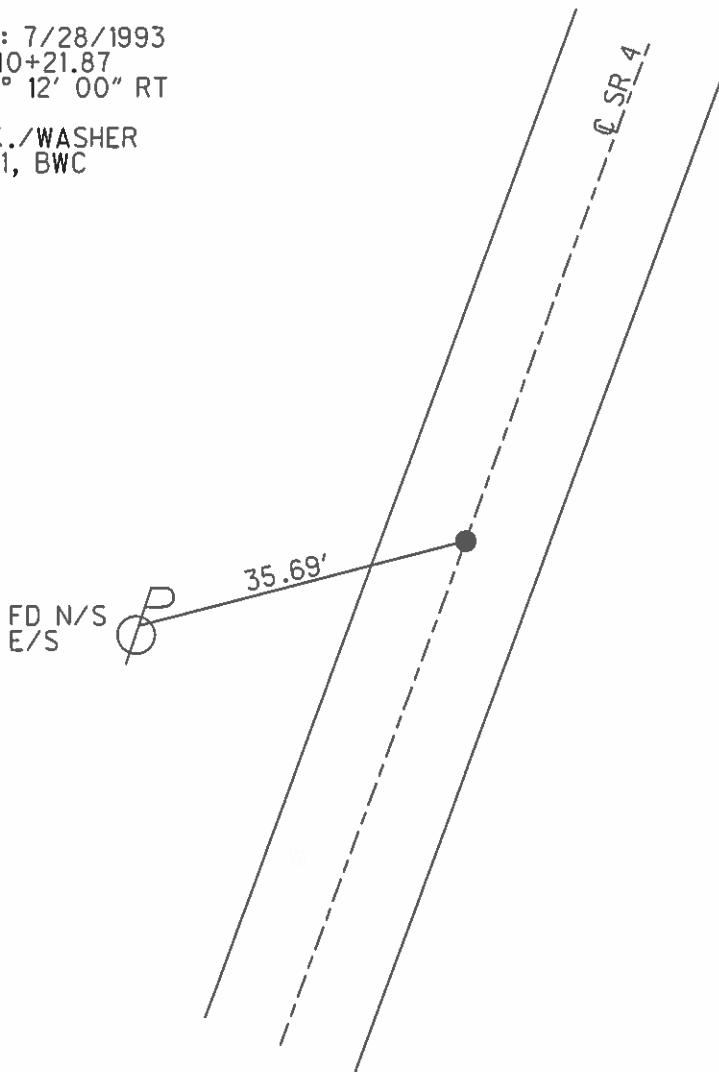
PERSONNEL	REFERENCE NO.	25 A	SHEET	51	OF	56
NOTES	CORDES	DATE	6/01/01	ROUTE	SR 4	
H.C.	BROWN	WEATHER	RAIN	COUNTY	SENECA	
R.C.	HOMAN	TEMP.	60°	TOWNSHIP	REED	
				SECTION	1	
				T. 2 N	R. 17 E	

TYPE MONUMENT P.K./WASHER
 ON SURFACE - ~~BELOW~~ ON _____
 LEFT - ☉ PAV'T - ~~RIGHT~~ 0.5'
11.5' TO RT EDGE PAVEMENT
 S.L.M. 642+77
 GRID: NORTHING: _____ EASTING: _____



RECORD: 7/28/1993
 STA. 640+21.87
 $\Delta = 00^\circ 12' 00''$ RT

SET P.K./WASHER
 7/02/01, BWC



O.D.O.T. DISTRICT 2 SURVEY OFFICE

PERSONNEL

REFERENCE NO. 25-A

SHEET 15 OF 19

NOTES CORDS

H.C. BROWN

DATE 6/01/01

ROUTE 4

R.C. HOMAN

WEATHER RAIN

COUNTY SENECA

TEMP. 60

TOWNSHIP REED

SECTION 1

T 2 N R 17 E

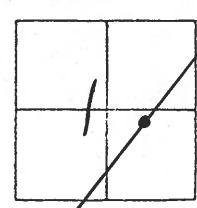
TYPE MONUMENT PK + WASHER

ON SURFACE - ~~NO~~ YES

LEFT- & PAV'T. - ~~NO~~ 0.5

11.5 TO RT EDGE PAVEMENT

S.L.M. 642+77



RECORDED 7-28-1993
PI STA: 640+21.87
A 0'-12'-00" RT

SET PK + WASHER
7/2/01
BWL

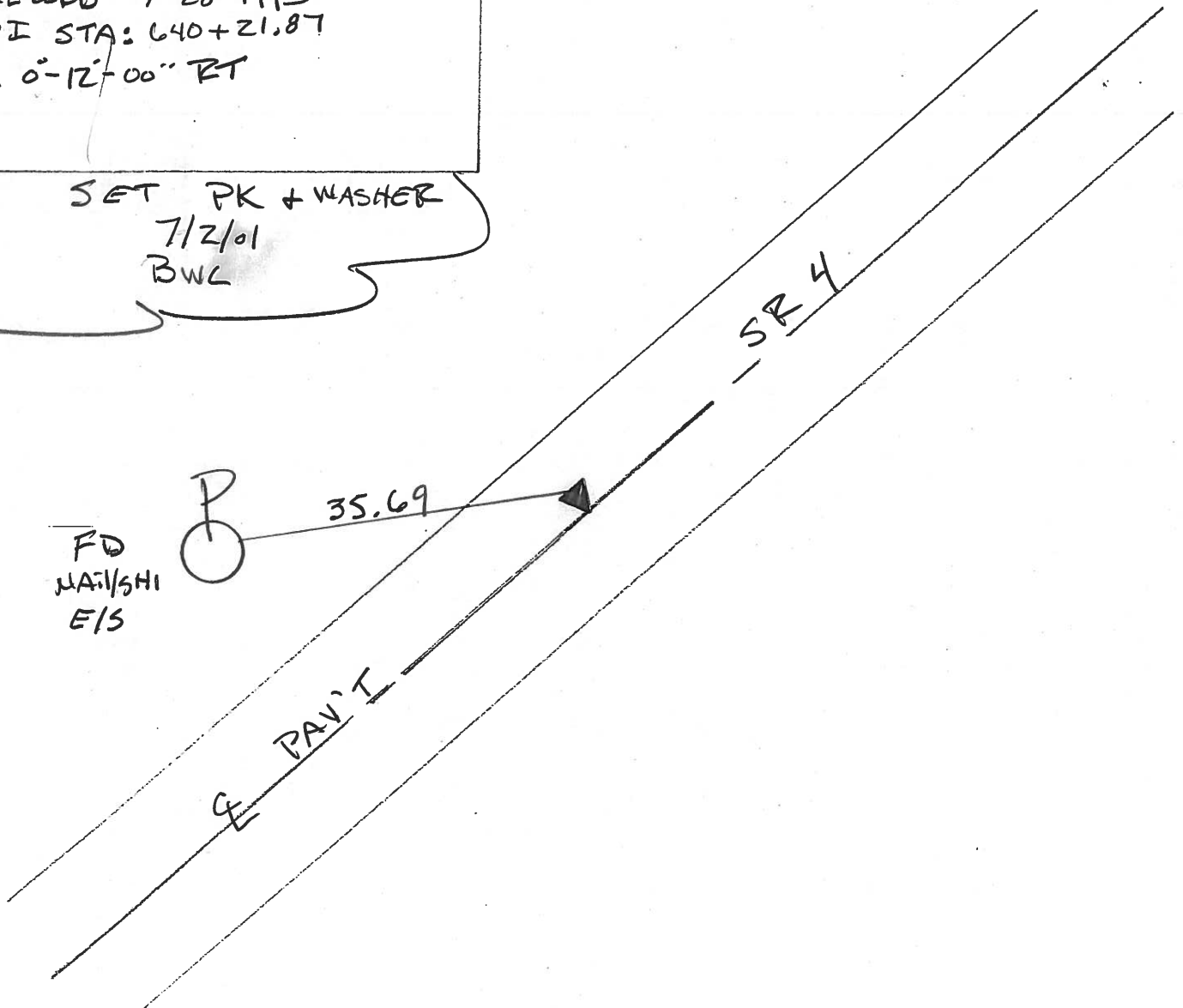
FD
NAIL/SHI
E/S



35.69

& PAV'T

SR 4



O.D.O.T. DISTRICT 2 SURVEY OFFICE

PERSONNEL

REFERENCE NO. 25-A

SHEET 46 OF 50

NOTES CHENEY

H.C. RIPPLE

DATE 7-28-1993

ROUTE #4

R.C. BARBOUR

WEATHER FAIR

COUNTY SENECA

GEYMAN

TEMP. 85°

TOWNSHIP REED

SECTION 1

T. 2 N. R. 17 E.

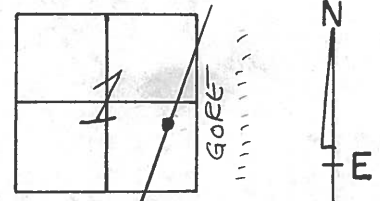
TYPE MONUMENT R.R. SPK.

~~TOP~~ SURFACE - BELOW 2"

LEFT - CL PAV'T. - ~~PAV'T.~~ 1'

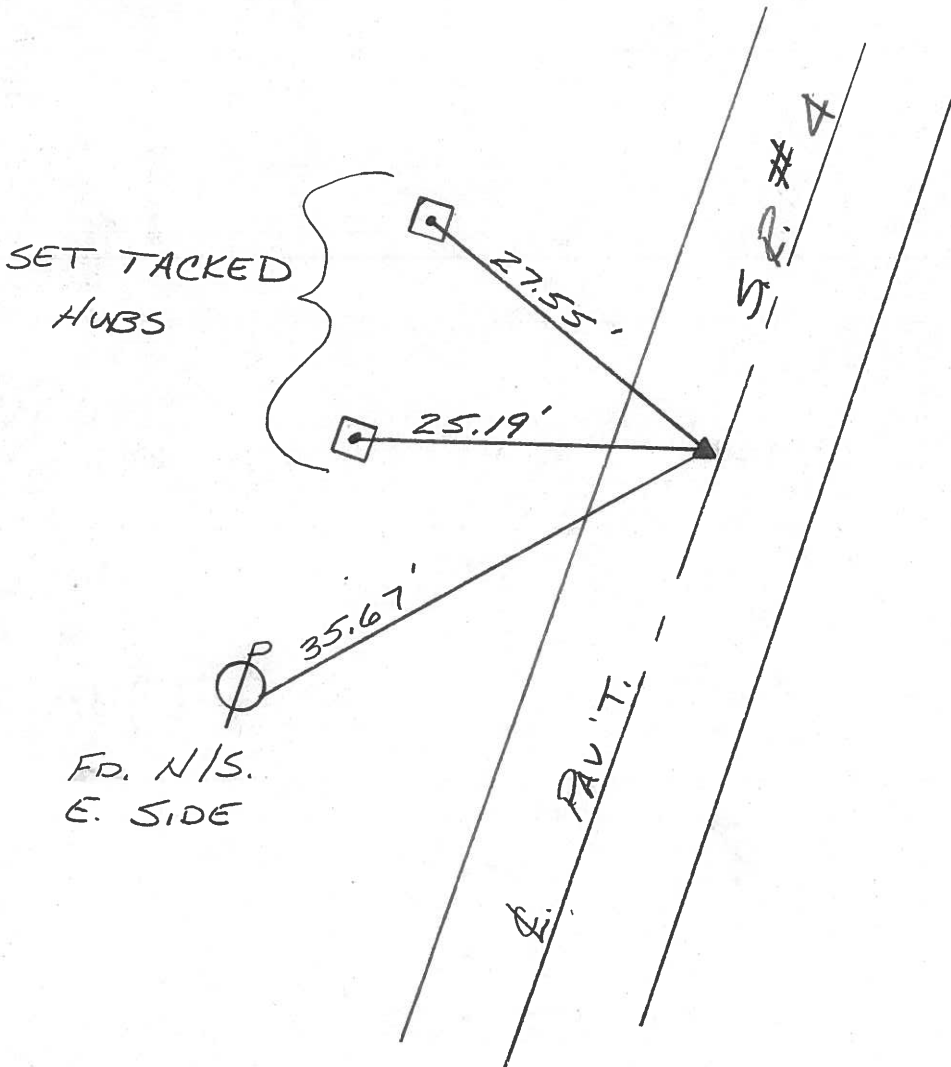
11.5' TO RT. EDGE PAVEMENT

S.L.M. 642+77



RECORD: 5-21-1987
 P.I. STA. 640+21.87
 $\Delta = 00^{\circ}12'00''$ RT.

SET PK/WASHER
 10-13-1993
 RCC



O.D.O.T. DISTRICT 2 SURVEY OFFICE

PERSONNEL

NOTES Cronin
H.C. Ripple
R.G. Barbour
Geyman

REFERENCE NO. _____

DRAW 12/11/87

DATE 5/21/87

WEATHER sunny

TEMP. 78°

SHEET 20 OF _____

ROUTE # 4

COUNTY Seneca

TOWNSHIP Reed

SECTION 1

T 2 N R 17 E

TYPE MONUMENT R.R. spike

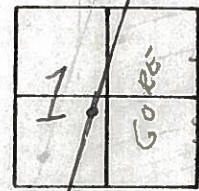
ON SURFACE - BELOW below surface

LEFT - & PAV'T. - RIGHT 1st Lt. & Pav't.

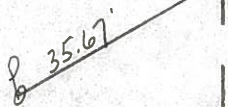
TO _____ EDGE PAVEMENT

S.L.M. _____

25A



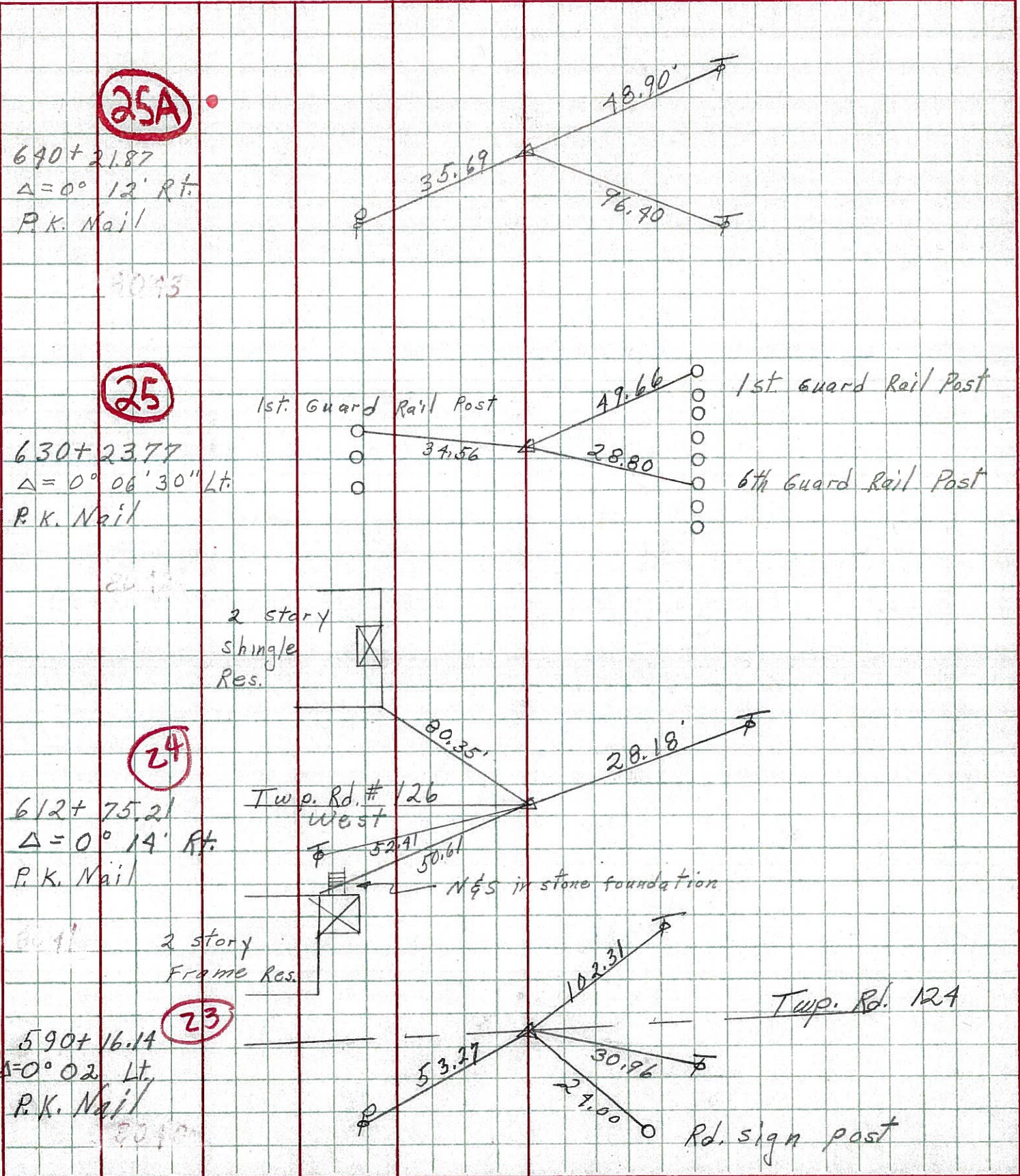
P.I. $\Delta = 00^{\circ}12'00''$ Rt.
640 + 21.87



PERSONNEL	TITLE	PERSONNEL	TITLE
Schneider		Potts	
Mosser			
Barbour			
Redding			

COUNTY Seneca DATE 10-3-68
 S. R. 4 WEATHER windy
 SEC. _____ TEMP. 50°

DESCRIPTION Ties for Control Points JOB NO. _____



PERSONNEL TITLE PERSONNEL TITLE

COUNTY SENECA

DATE 10-3-68

S. R. 4

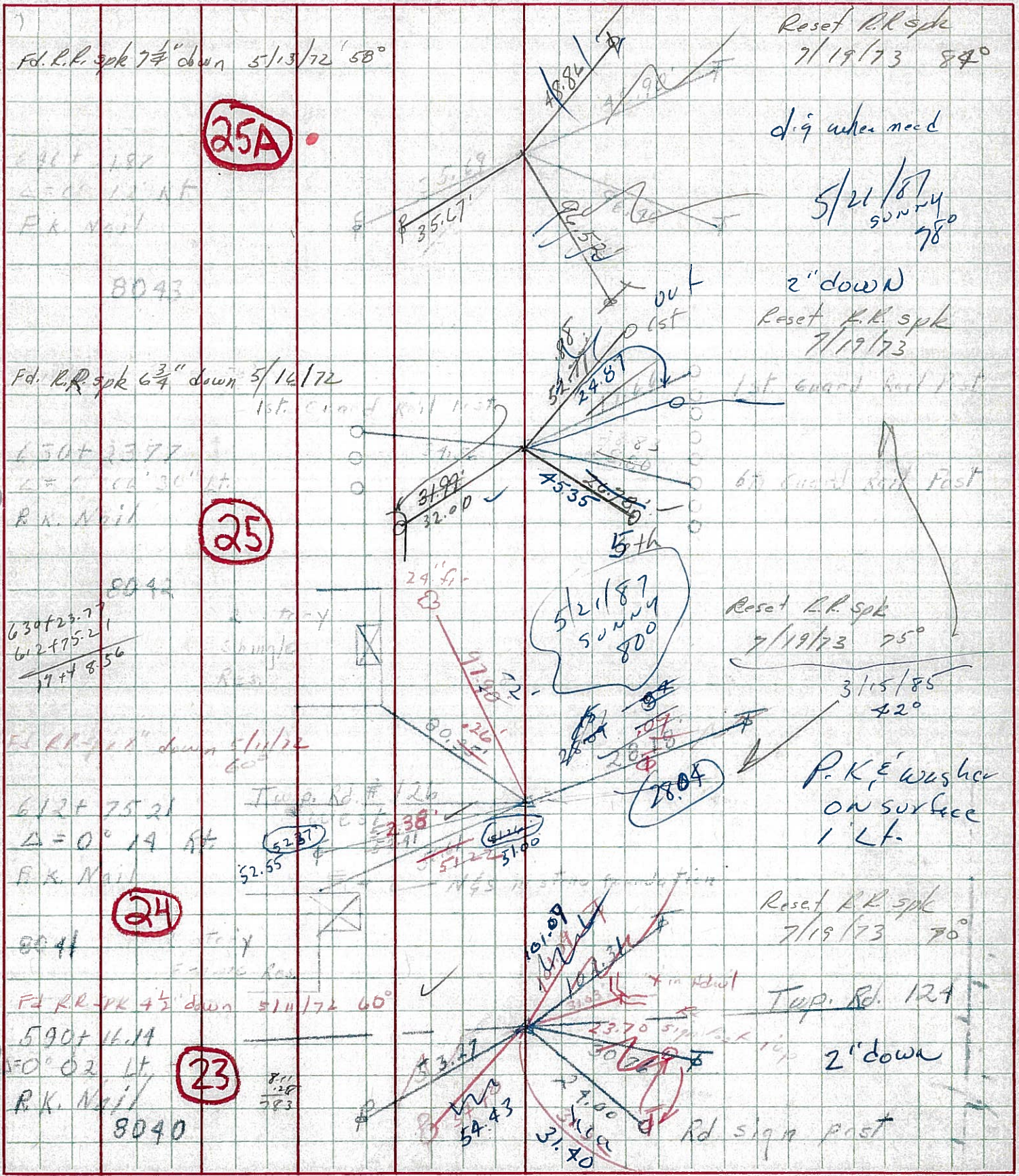
WEATHER Windy

SEC.

TEMP 30°

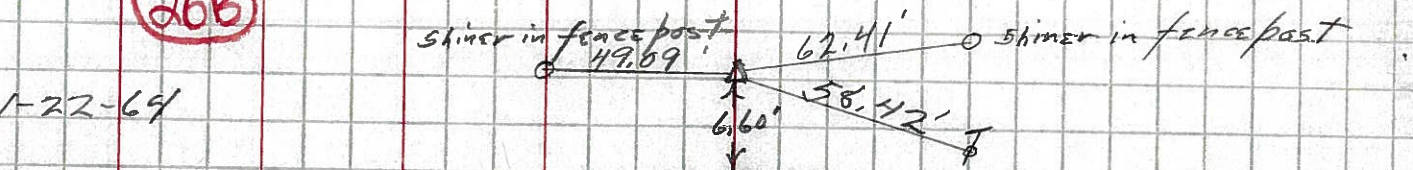
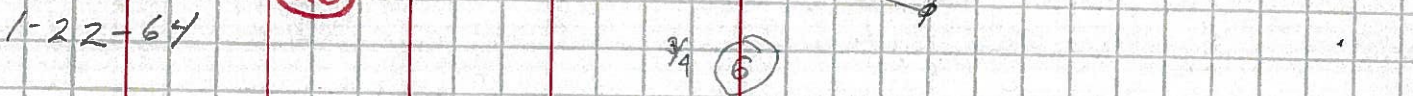
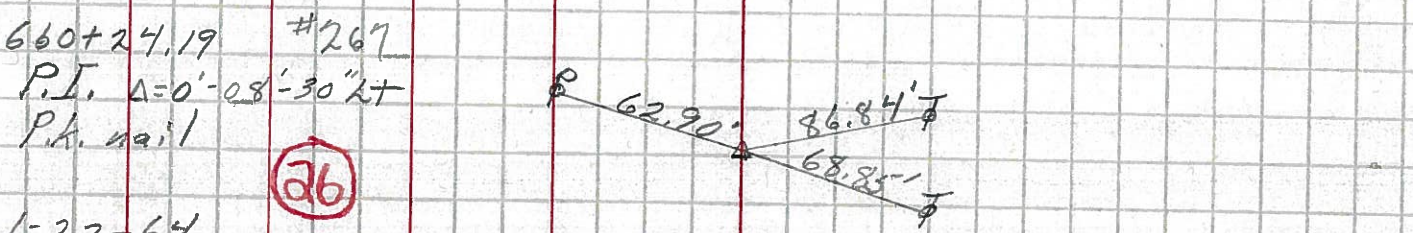
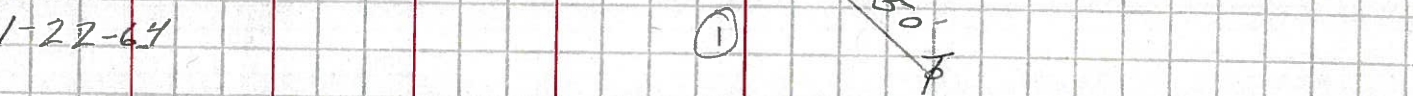
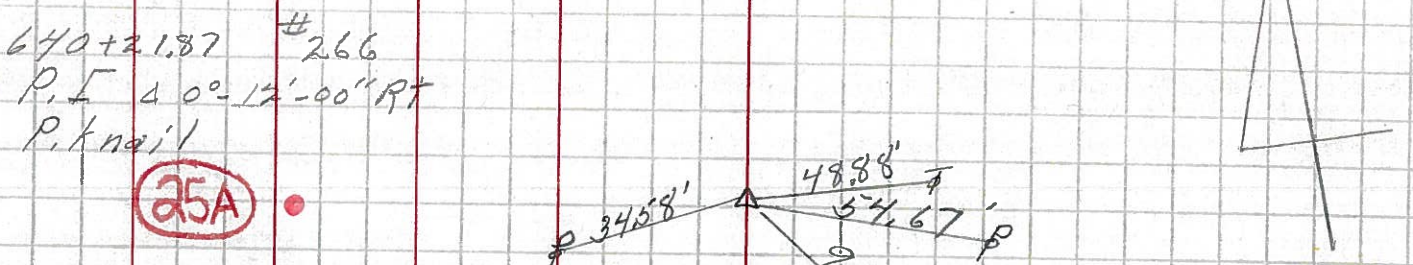
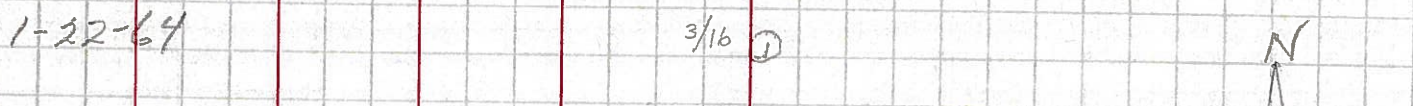
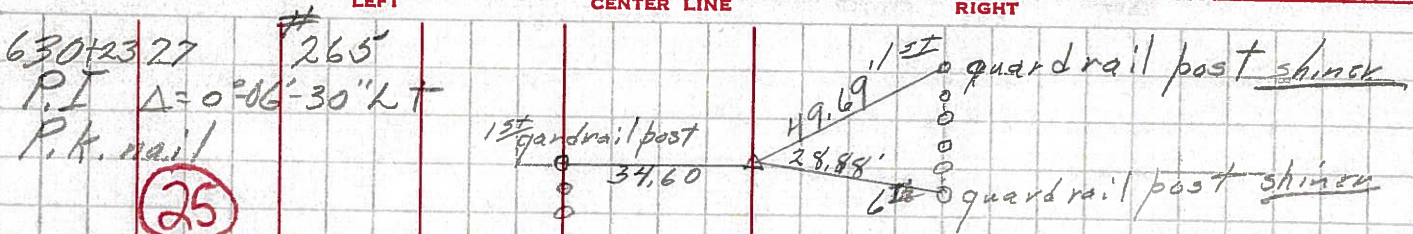
DESCRIPTION Ties for Control Points

JOB NO.



PERSONNEL	TITLE	PERSONNEL	TITLE	COUNTY	DATE
F. Krabill				SENECA	
J. Kowalaski					
D. Brooks				S. R. 4	WEATHER
				SEC.	TEMP.

DESCRIPTION	LEFT	CENTER LINE	RIGHT	JOB NO.
-------------	------	-------------	-------	---------



con. slab
 in
 pavement

