

O.D.O.T. DISTRICT 2 SURVEY OFFICE (USE ONLY)

PERSONNEL

REFERENCE NO. 25 B

SHEET 52 OF 56

NOTES CORDES DATE 6/1/01

H.C. BROWN WEATHER RAIN

R.C. HOMAN TEMP. 60°

ROUTE SR 4

COUNTY SENECA

TOWNSHIP REED

SECTION 1

DWG BY NASON PID PAVETRAIN

T 2 N R 17 E

TYPE MONUMENT SQ. HEADED SPIKE/WASHER

ON SURFACE - BELOW 2"

OFFSET \varnothing PAVEMENT 1.0' LT : RT

13' TO RT EDGE PAVEMENT

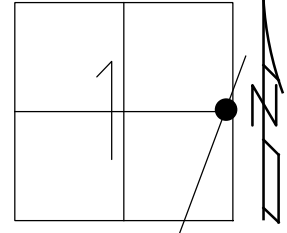
STATION: 648+23

HORZ.DATUM: NAD83 (2011)

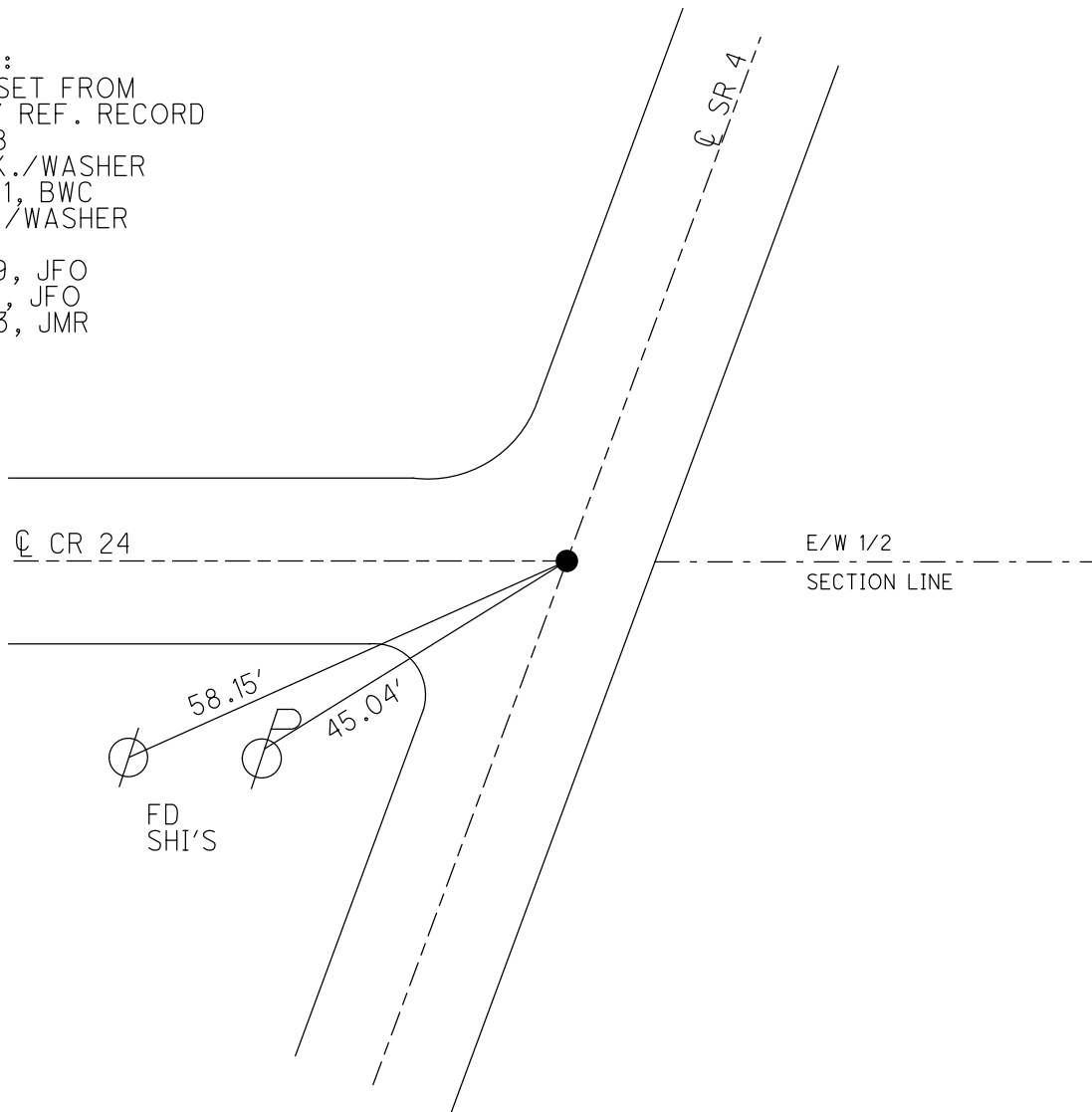
GEOID: 2012A

GRID: NORTHING: 544406.264

EASTING: 1874062.982



RECORD:
 POINT SET FROM
 COUNTY REF. RECORD
 8/17/88
 SET P.K./WASHER
 7/02/01, BWC
 FD P.K./WASHER
 REFB25
 2/26/19, JFO
 8/19/19, JFO
 1/20/23, JMR



O.D.O.T. DISTRICT 2 SURVEY OFFICE (USE ONLY)

PERSONNEL

REFERENCE NO. 25 B

SHEET 11 OF 15

NOTES CORDES

DATE 6/1/01

ROUTE SR 4

H.C. BROWN

WEATHER RAIN

COUNTY SENECA

R.C. HOMAN

TEMP. 60°

TOWNSHIP REED

SECTION 1

DWG BY NASON

PID 107060

T 2 N R 17 E

TYPE MONUMENT SQ. HEADED SPIKE/WASHER

ON SURFACE - BELOW 2"

OFFSET Q PAVEMENT 1.0' LT : RT

13' TO RT EDGE PAVEMENT

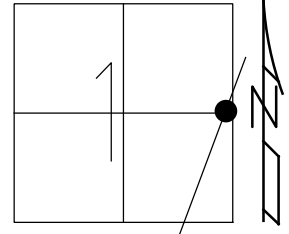
STATION: 648+23

HORZ.DATUM: NAD83 (2011)

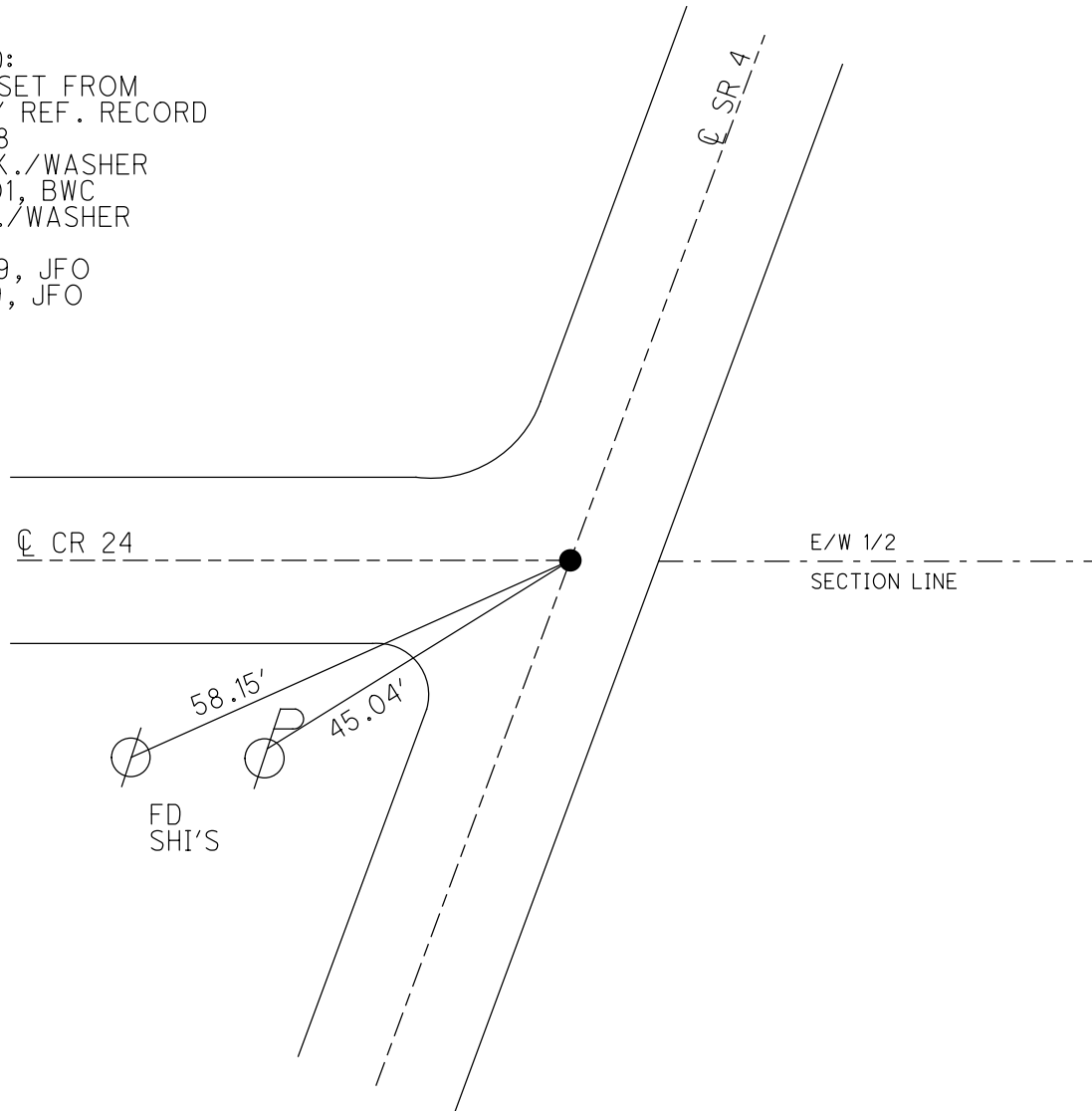
GEOID: 2012A

GRID: NORTHING: 544406.264

EASTING: 1874062.982



RECORD:
 POINT SET FROM
 COUNTY REF. RECORD
 8/17/88
 SET P.K./WASHER
 7/02/01, BWC
 FD P.K./WASHER
 REFB25
 2/26/19, JFO
 8/19/19, JFO



O.D.O.T. DISTRICT 2 SURVEY OFFICE (USE ONLY)

PERSONNEL	REFERENCE NO.	25 B	SHEET	52	OF	56
NOTES	CORDES	DATE	6/01/01	ROUTE	SR 4	
H.C.	BROWN	WEATHER	RAIN	COUNTY	SENECA	
R.C.	HOMAN	TEMP.	60°	TOWNSHIP	REED	
				SECTION	1	
				T	2	N
				R	17	E

TYPE MONUMENT SQ. HEADED SPIKE & WASHER

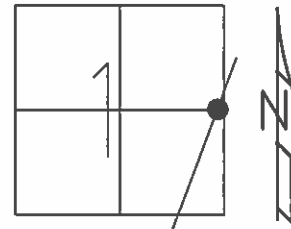
~~ON SURFACE~~ - BELOW 2"

LEFT - ☉ PAV'T - ~~RIGHT~~ 1.0'

13 TO RT EDGE PAVEMENT

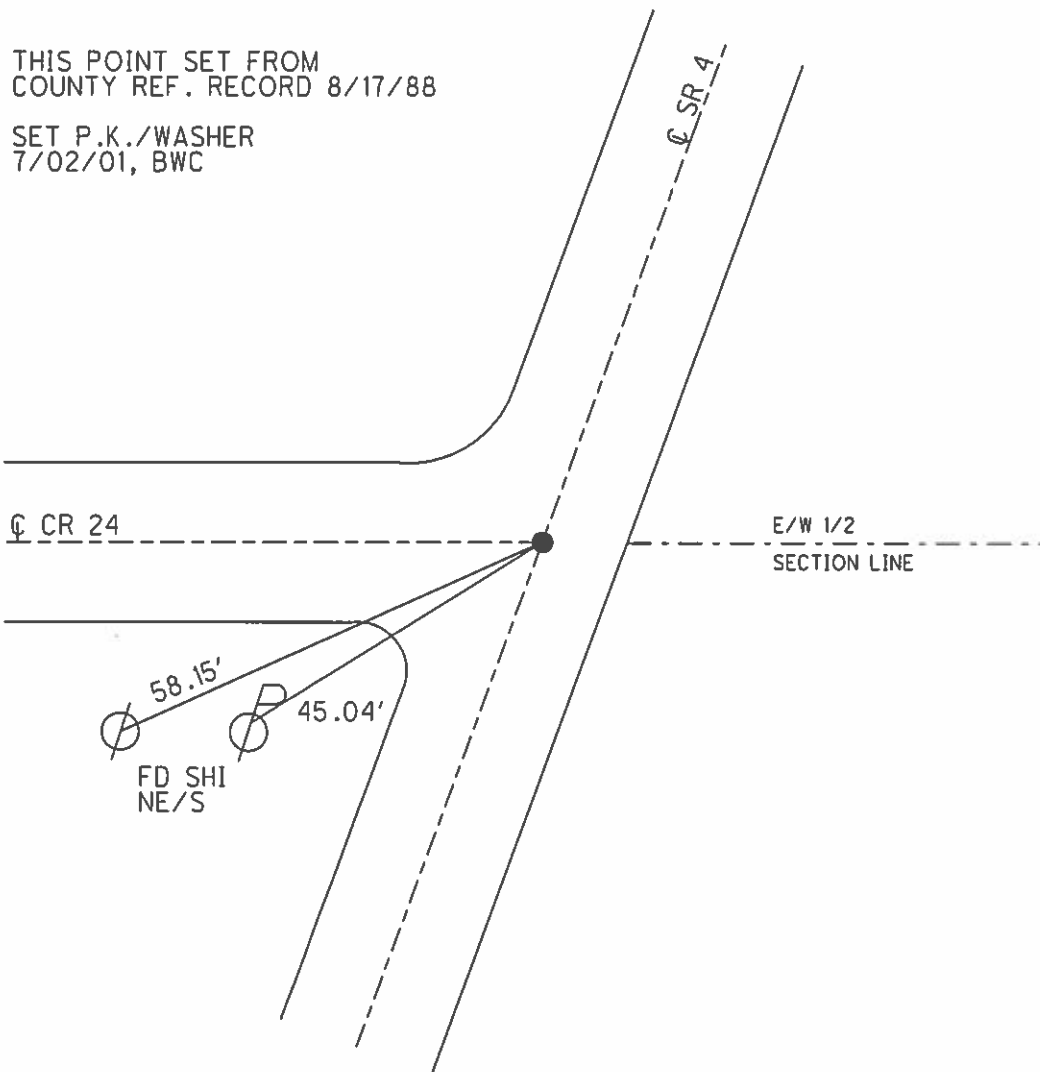
S.L.M. 648+23

GRID: NORTHING: _____ EASTING: _____



THIS POINT SET FROM
COUNTY REF. RECORD 8/17/88

SET P.K./WASHER
7/02/01, BWC



O.D.O.T. DISTRICT 2 SURVEY OFFICE

PERSONNEL

REFERENCE NO. 25-B

SHEET 16 OF 19

NOTES CORDES

H.C. BROWN

DATE 6/01/01

ROUTE 4

R.C. HOMAN

WEATHER RAIN

COUNTY SENECA

TEMP. 60

TOWNSHIP REED

SECTION 24

TZ N R 12 E

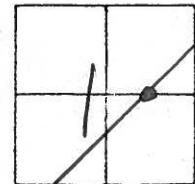
TYPE MONUMENT SQ. HEADED SPK. & WASHER

~~2"~~ - BELOW 2"

LEFT - ¢ PAV'T. - ~~1.0~~ 1.0

13 TO RT EDGE PAVEMENT

S.L.M. 648+23



THIS POINT SET FROM
COUNTY REF. RECORD:
8-17-88

SET PK + WASHER
7-2-01
BWC

¢ PAV'T CR 24

E/W YZ
SECTION LINE

FD
SHI
NE/S

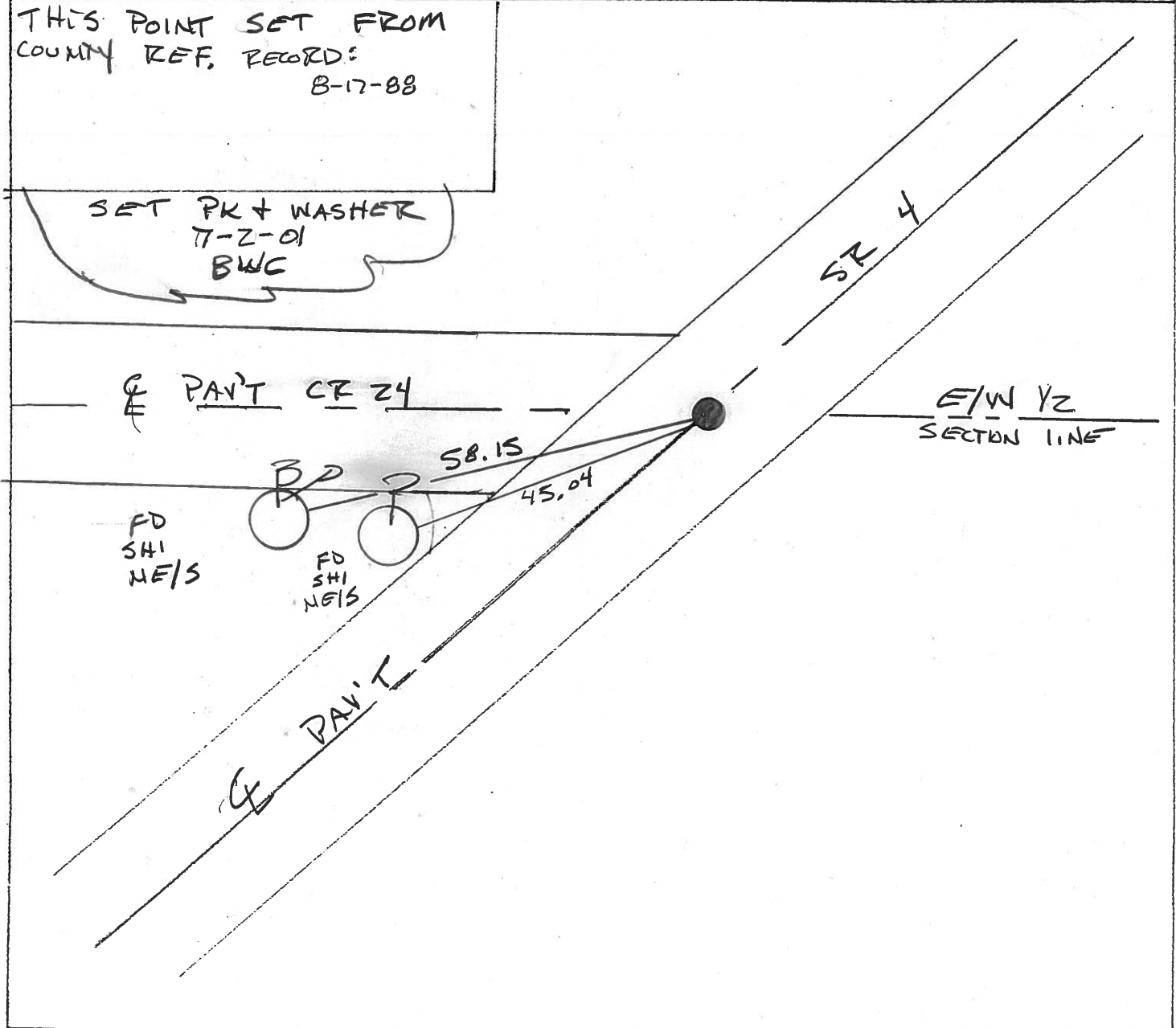
FD
SHI
NE/S

58.15

45.04

¢ PAV'T

SR 4



O.D.O.T. DISTRICT 2 SURVEY OFFICE

PERSONNEL

REFERENCE NO. 25-B

SHEET _____ OF _____

NOTES CRONIN

H.C. RIPPLE

DATE 8/17/88

ROUTE #4

R.C. BARBOUR

WEATHER SUNNY

COUNTY SENECA

GEYMAN

TEMP. 80°

TOWNSHIP REED

SECTION 24

T 2 N R 17 E

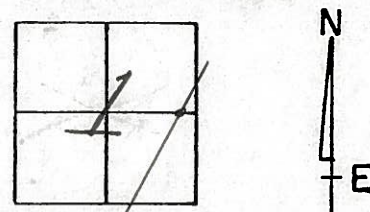
TYPE MONUMENT SET SQ. HEADED SPIKE & WASHER

ON SURFACE - BELOW _____

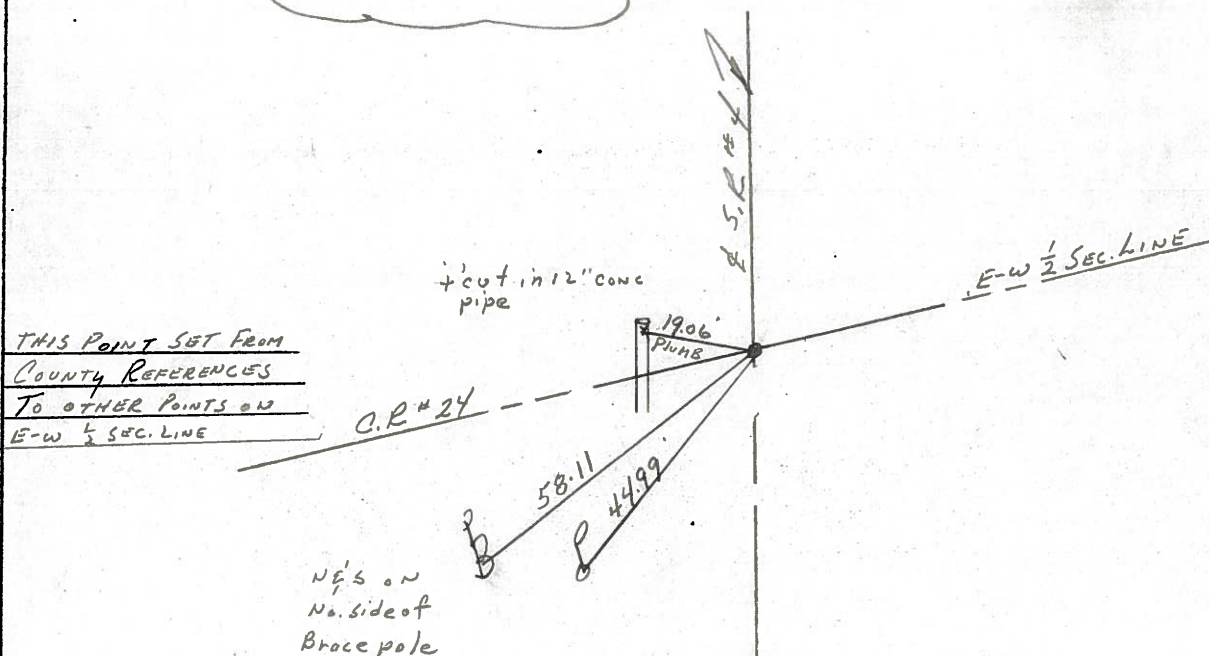
LEFT - & PAV'T. - RIGHT 1'±

TO _____ EDGE PAVEMENT

S.L.M. _____



**NOTE: THIS POINT WAS NOT REPLACED AFTER RESURFACING IN 1993. IT WILL BE 2"± BENEATH PAV'T. SURFACE.
RCC*



PERSONNEL TITLE PERSONNEL TITLE

Schneider _____ Potts _____

COUNTY Seneca DATE 10-3-68

Mosser _____

S. R. 4 WEATHER Cloudy-Windy

Barbour _____

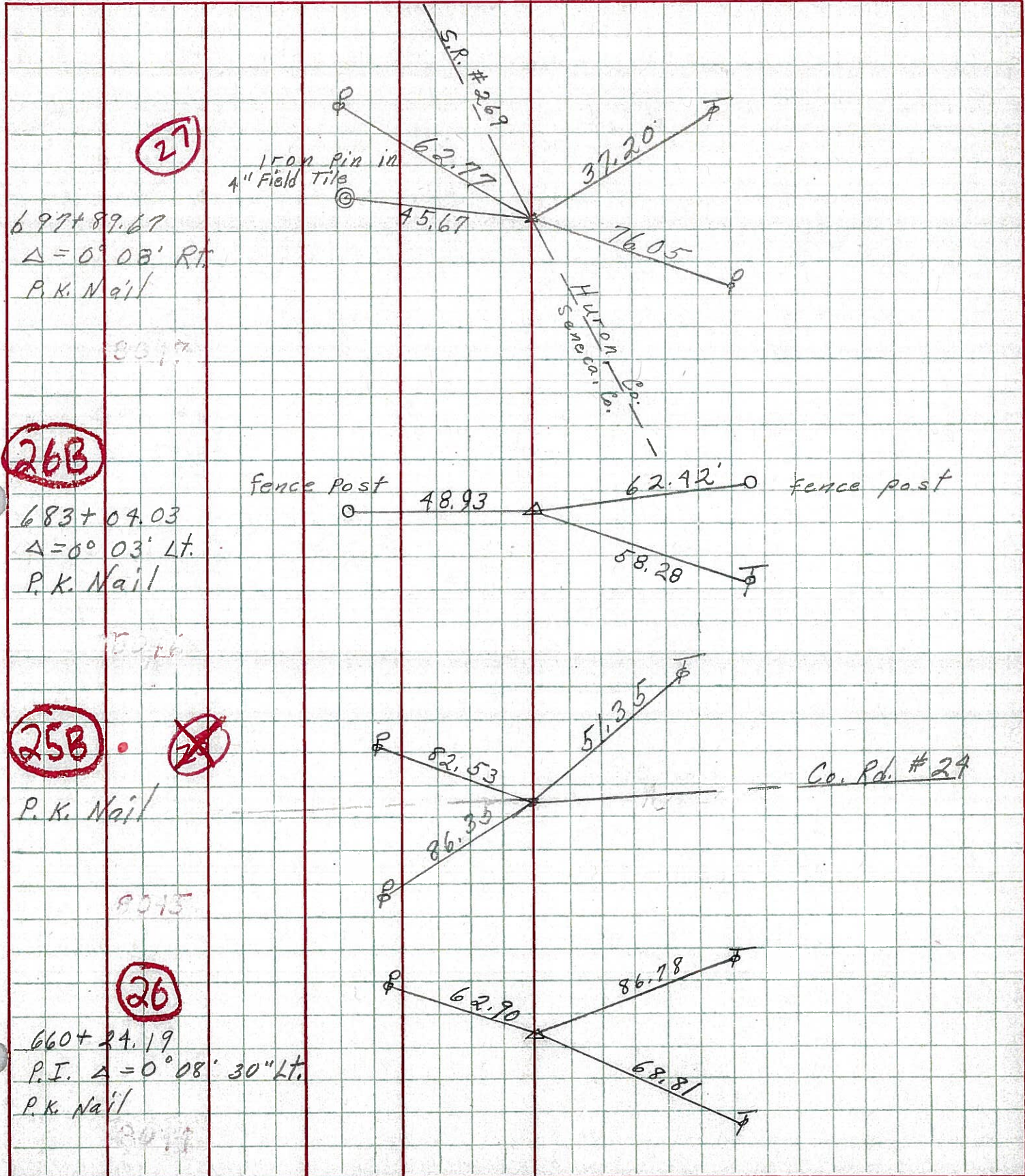
SEC. _____ TEMP. 30°

Redding _____

DESCRIPTION Ties for Control Points

JOB NO. _____

LEFT CENTER LINE RIGHT



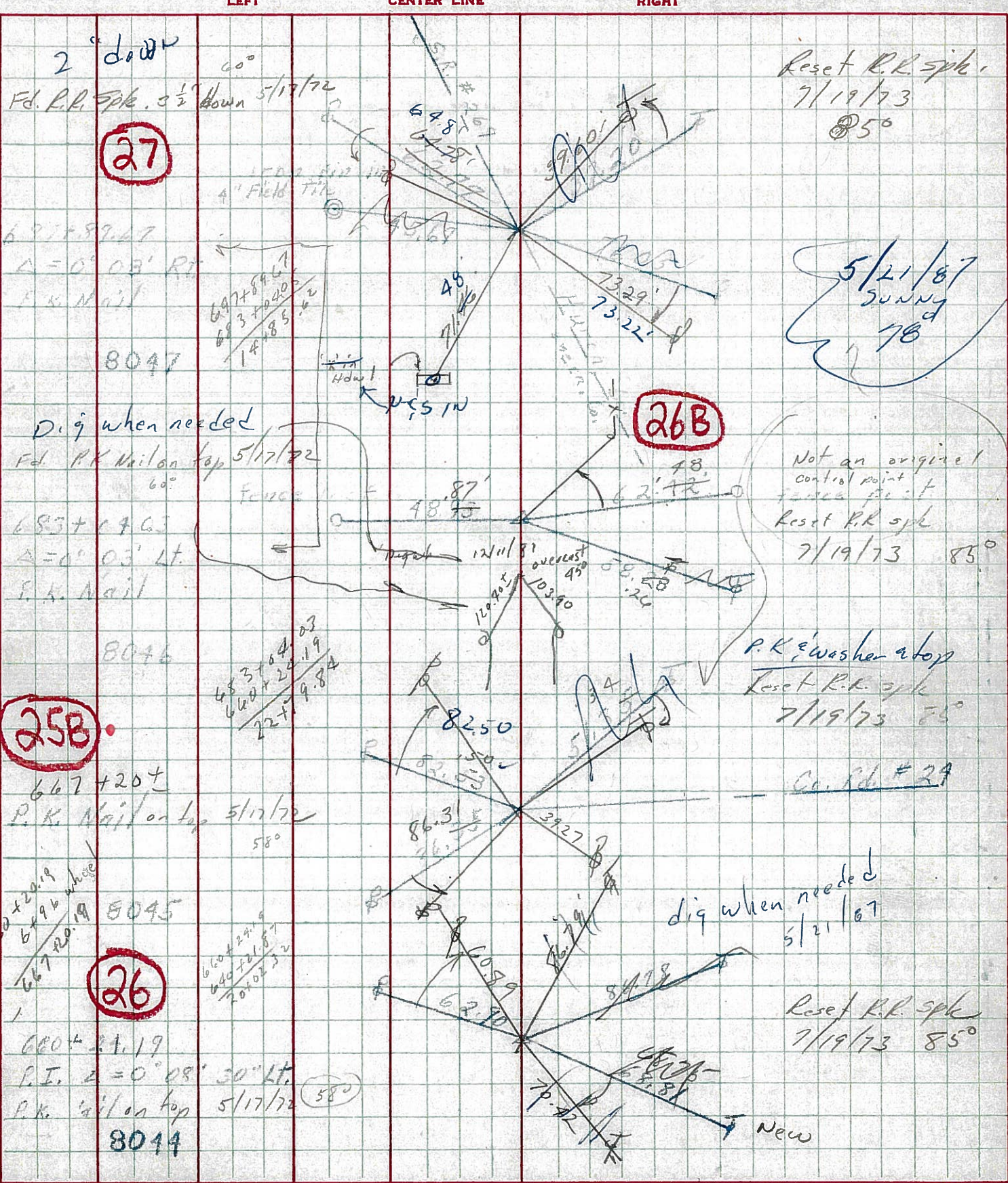
PERSONNEL TITLE PERSONNEL TITLE

COUNTY Seneca DATE 10-3-68

S. R. 4 WEATHER cloudy - windy

SEC. TEMP. 50°

DESCRIPTION Ties for Control Points JOB NO.



27

26B

25B

26

Reset R.K. spike
7/19/73
85°

5/21/67
SUNNY
78

Not an original
control point
reset R.K. spike
7/19/73 85°

P.K. washer at top
Reset R.K. spike
7/19/73 85°

Co. Rd # 29

dig when needed
5/21/67

Reset R.K. spike
7/19/73 85°

58°

New