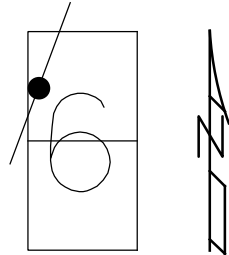


O.D.O.T. DISTRICT 2 SURVEY OFFICE (USE ONLY)

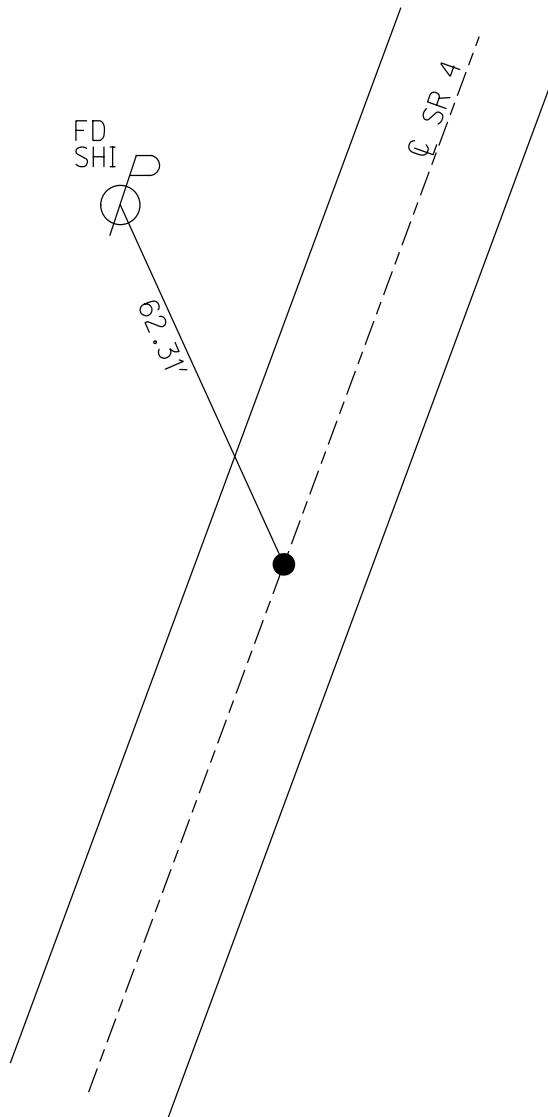
PERSONNEL \_\_\_\_\_ REFERENCE NO. 26 SHEET 12 OF 15  
NOTES CORDES DATE 6/1/01 ROUTE SR 4  
H.C. BROWN WEATHER RAIN COUNTY SENECA  
R.C. HOMAN TEMP. 60° TOWNSHIP REED  
DWG BY NASON PID 107060 SECTION 6  
T 2 N R 18 E

TYPE MONUMENT P.K./WASHER  
ON SURFACE - ~~BELOW~~ ON \_\_\_\_\_  
OFFSET ☐ PAVEMENT ON \_\_\_\_\_ LT : RT  
10.5' TO RT EDGE PAVEMENT  
STATION: 662+84



HORZ.DATUM: NAD83 (2011) GEOID: 2012A  
GRID: NORTHING: 545779.318 EASTING: 1874554.418

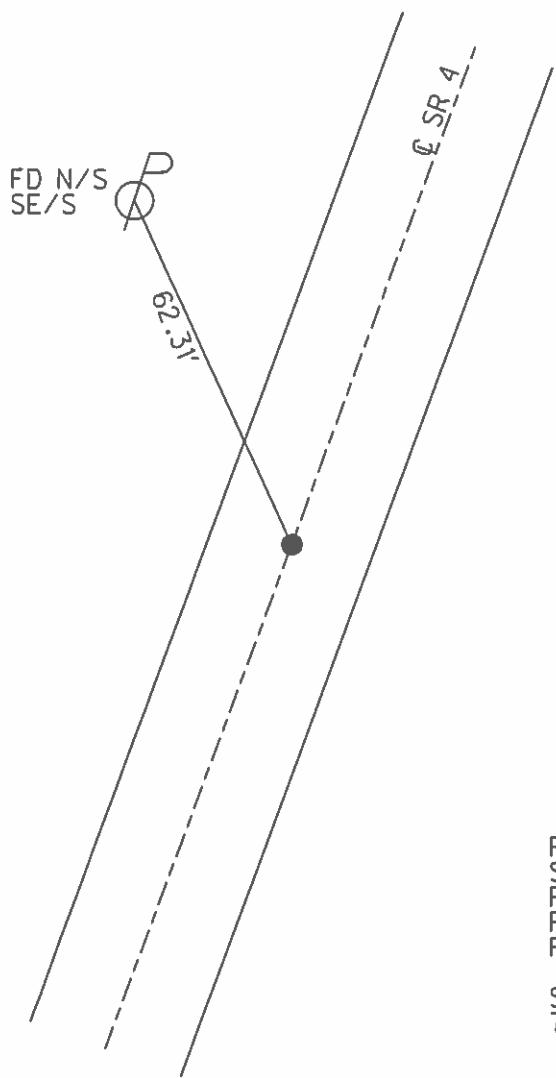
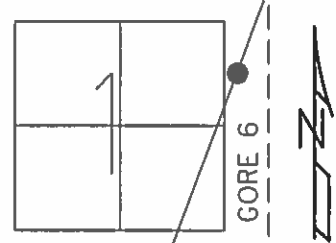
RECORD: P.I.  
STA. 660+24.19  
 $\Delta = 00^{\circ}08' 30''$  LT  
FD P.K./WASHER  
ATOP R.R.SPIKE  
12/11/1987  
SET P.K./WASHER  
7/02/01, BWC  
FD P.K. NAIL  
2 1/2" DOWN  
REF 26  
2/26/19, JFO  
8/19/19, JFO



O.D.O.T. DISTRICT 2 SURVEY OFFICE (USE ONLY)

PERSONNEL \_\_\_\_\_ REFERENCE NO. 26 SHEET 53 OF 56  
 NOTES CORDES DATE 6/01/01 ROUTE SR 4  
 H.C. BROWN WEATHER RAIN COUNTY SENECA  
 R.C. HOMAN TEMP. 60° TOWNSHIP REED  
 \_\_\_\_\_ SECTION 6  
 \_\_\_\_\_ T 2 N R 18 E

TYPE MONUMENT P.K./WASHER  
 ON SURFACE - ~~BELOW~~ ON  
 LEFT - Q PAV'T - RIGHT ON  
10.5' TO RT EDGE PAVEMENT  
 S.L.M. 662+84  
 GRID: NORTHING: \_\_\_\_\_ EASTING: \_\_\_\_\_



RECORD:  
 STA. 660+24.19  
 P.K./WASHER ATOP  
 R.R.SPIKE, 12/11/1987  
 P.I.  $\Delta = 00^\circ 08' 30''$  LT  
 SET P.K./WASHER  
 7/02/01, BWC

O.D.O.T. DISTRICT 2 SURVEY OFFICE

PERSONNEL

REFERENCE NO. 26

SHEET 17 OF 19

NOTES Cordes

H.C. Brown

R.C. Homan

DATE 6-1-01

WEATHER Rain

TEMP. 60°

ROUTE 4

COUNTY Seneca

TOWNSHIP Reed

SECTION 6

T2 N R 18 E

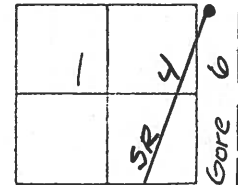
TYPE MONUMENT PK/Washer

ON SURFACE - ~~WOOD~~ On

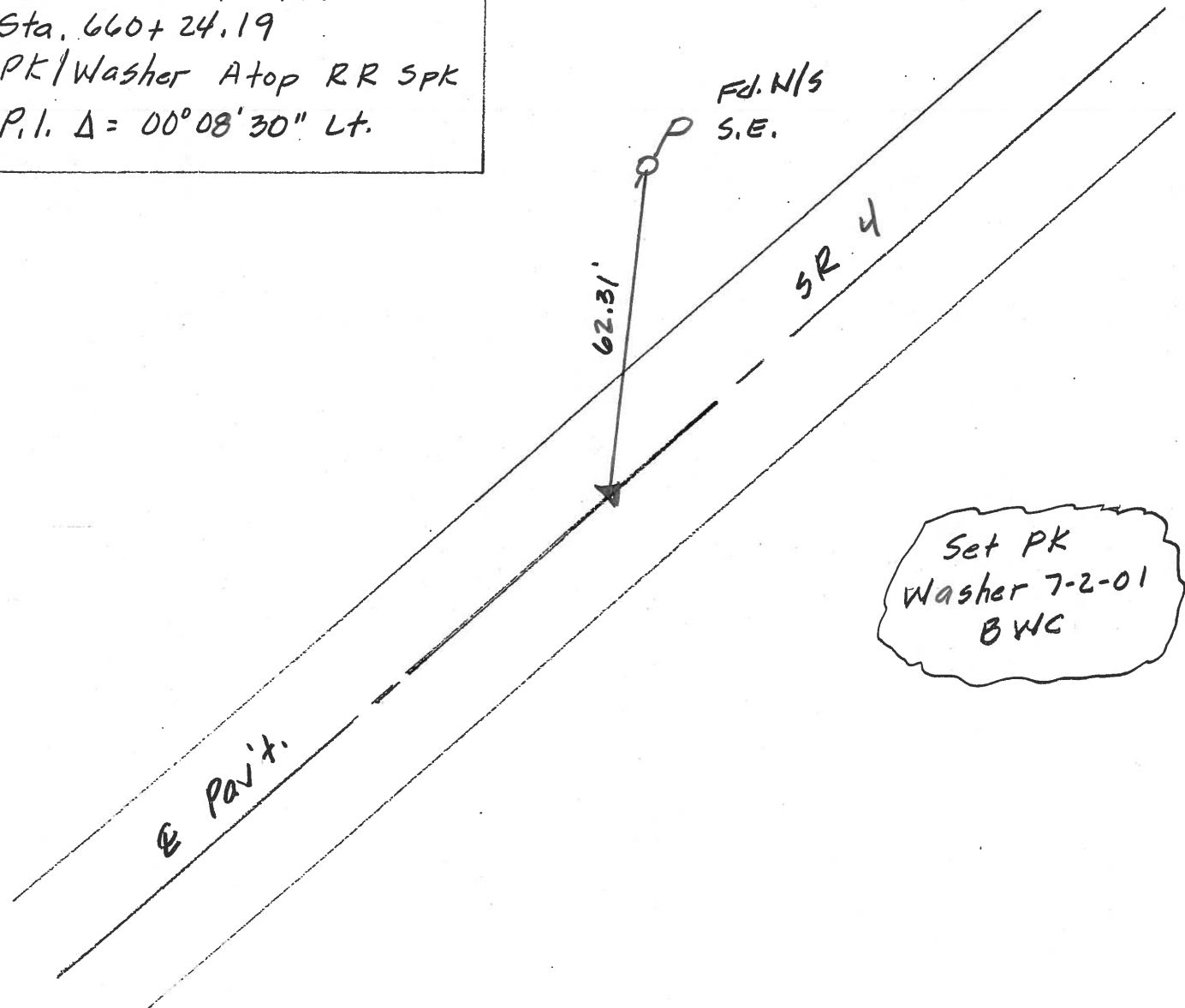
~~LEFT~~ - PAV'T. - ~~RIGHT~~ On

10.5' TO R+ EDGE PAVEMENT

S.L.M. 662+84



Record 12-11-1987  
 Sta. 660+24.19  
 PK/Washer Atop RR Spk  
 P.I.  $\Delta = 00^{\circ}08'30''$  Lt.



O.D.O.T. DISTRICT 2 SURVEY OFFICE

PERSONNEL

REFERENCE NO. 20

SHEET 47 OF 50

NOTES CHENEY

H.C. RIPPLE

DATE 7-28-1993

ROUTE #4

R.C. BARBOUR

WEATHER FAIR

COUNTY SENECA

GEYMAN

TEMP. 85°

TOWNSHIP REED

SECTION 6

T2N R18E

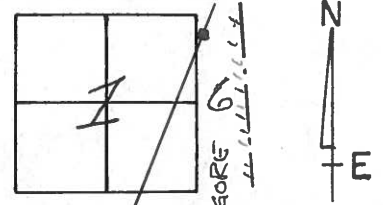
TYPE MONUMENT P.R. SPK.

~~ON~~ SURFACE - BELOW 2"

~~SET - C~~ PAV'T. - RIGHT ON

10.5' TO RT. EDGE PAVEMENT

S.L.M. 662+84



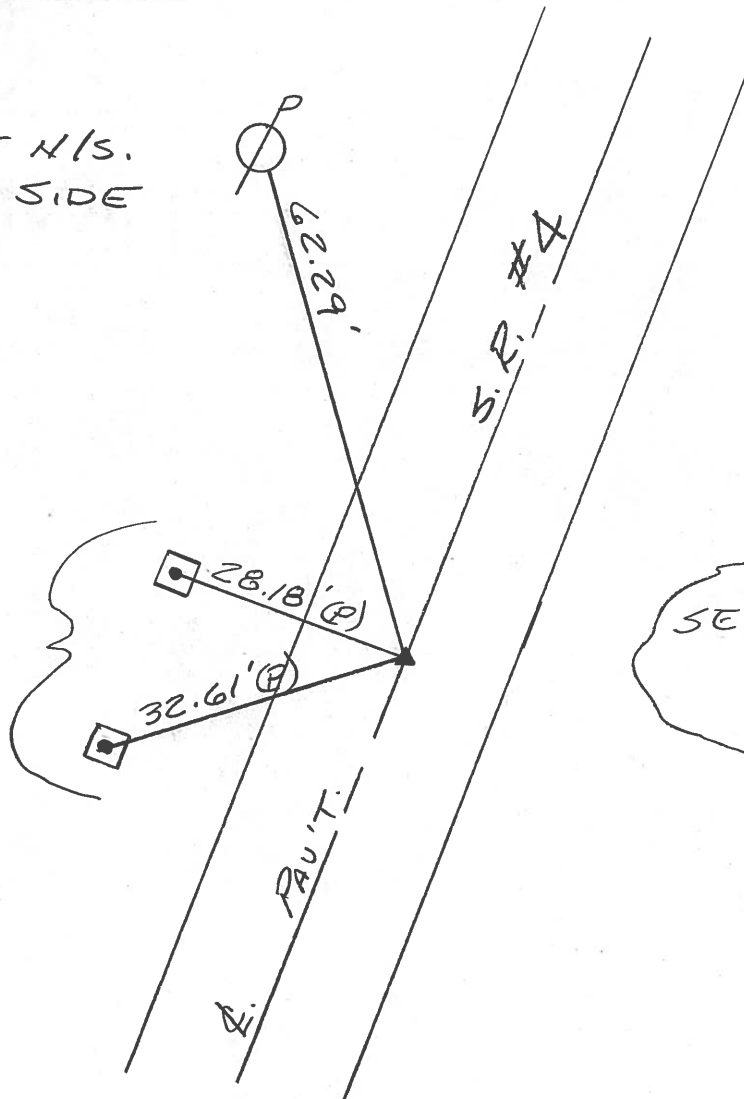
RECORD: 12-11-1987

P.I. STA. 660+24.19

$\Delta = 00^{\circ}08'30''$  LT.

SET N/S.  
SE. SIDE

SET TACKED  
HUBS



SET PK/WASHER  
10-13-1993  
RCC

O.D.O.T. DISTRICT 2 SURVEY OFFICE

PERSONNEL

NOTES Cronin  
H.C. Ripple  
R.C. Barbour  
Geyman

REFERENCE NO. \_\_\_\_\_

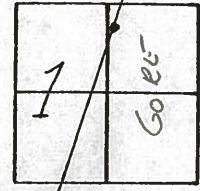
DATE 12/11/87  
WEATHER overcast  
TEMP. 45°

SHEET 21 OF \_\_\_\_\_

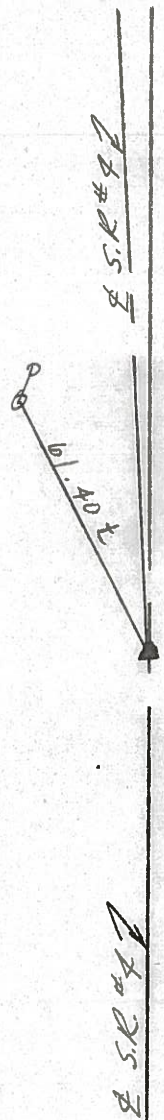
ROUTE SR #4  
COUNTY Seneca  
TOWNSHIP Reed  
SECTION 60E  
T 2 N R 17 E

TYPE MONUMENT RR spike  
ON SURFACE - BELOW 2" ± below surface  
LEFT - PAV'T. - RIGHT PAV'T.  
\_\_\_\_ TO \_\_\_\_ EDGE PAVEMENT  
S.L.M. \_\_\_\_\_

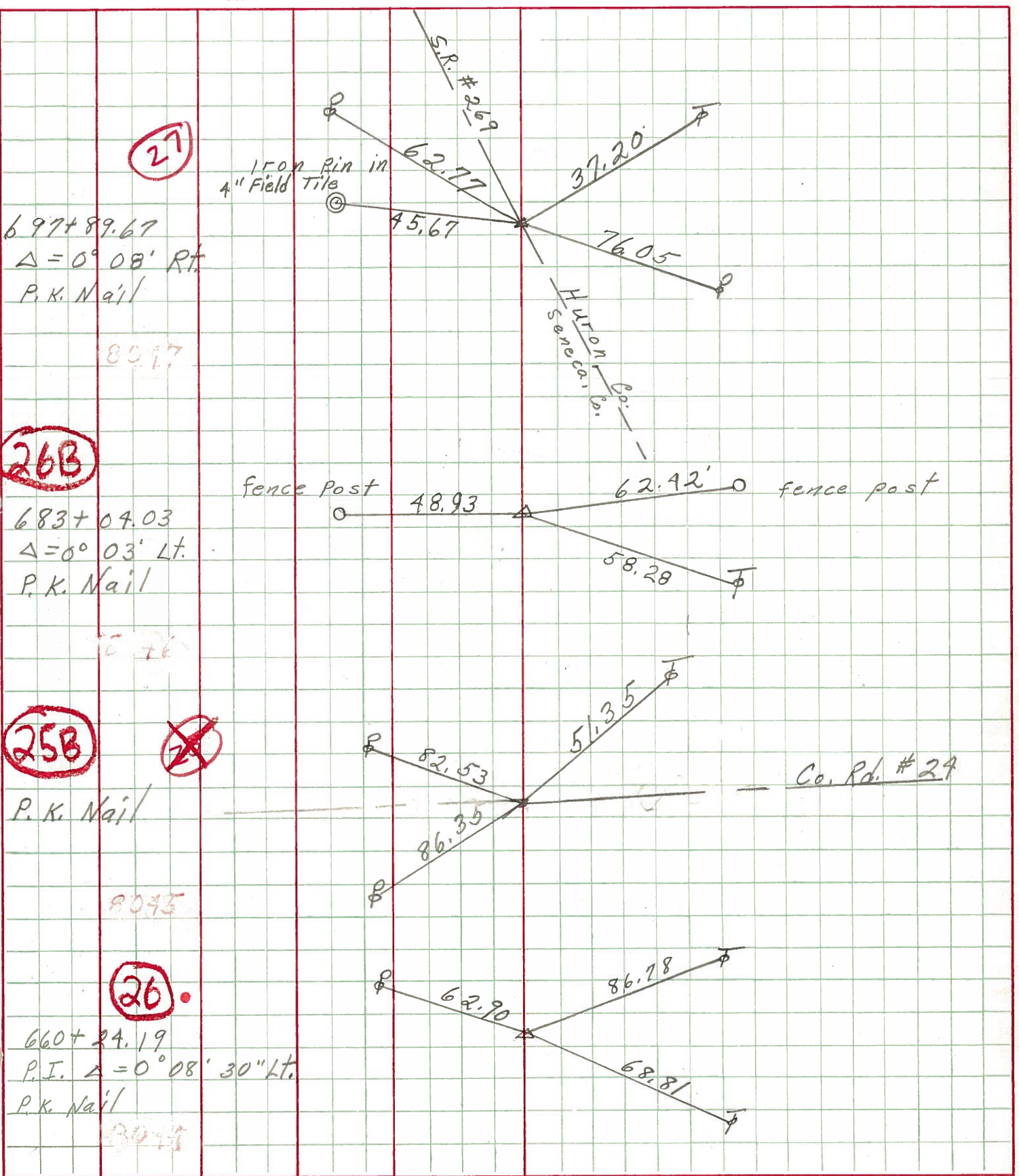
26



P.I. A = 00° 08' 30" Lt.  
660 + 24.19

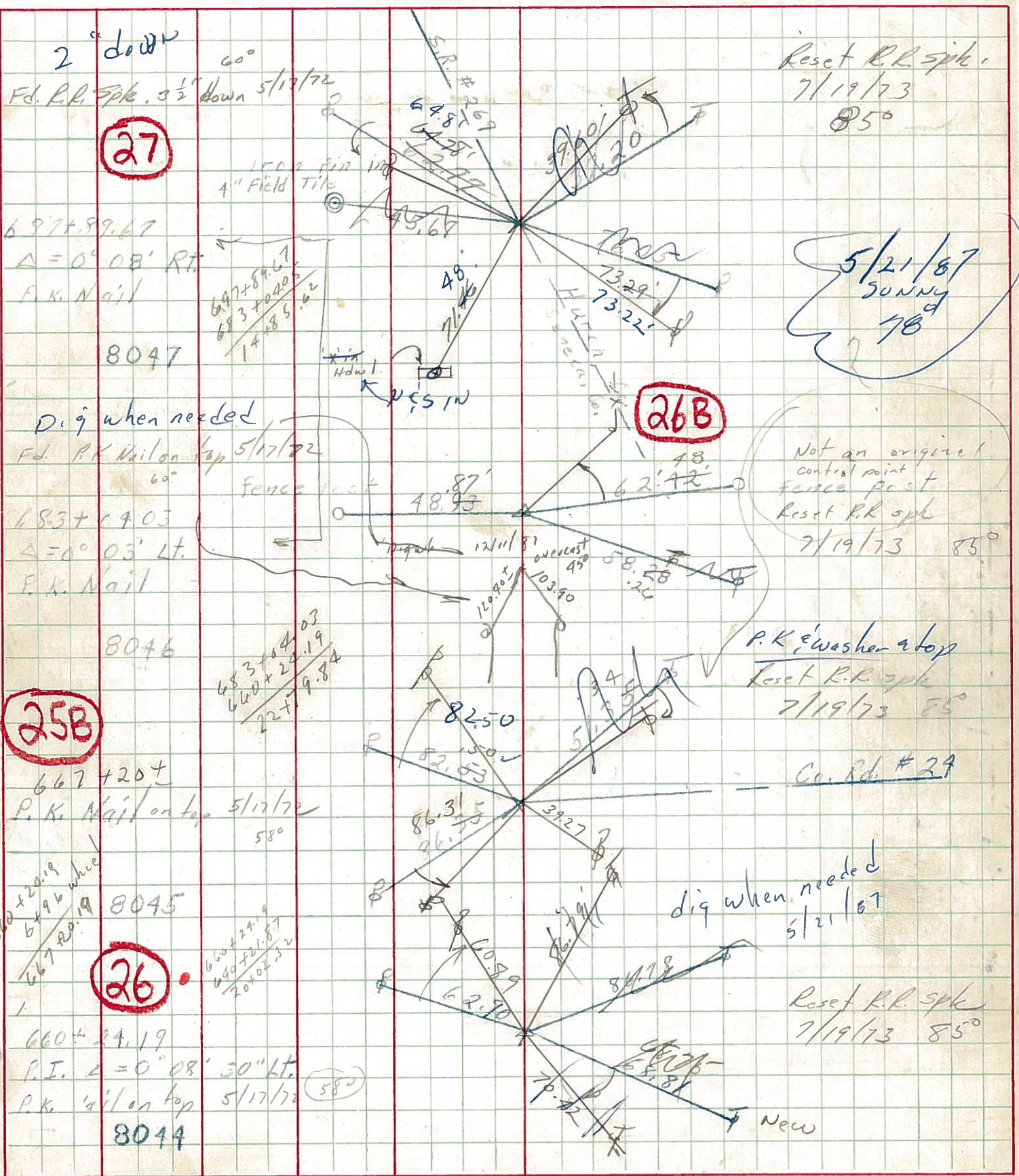


PERSONNEL TITLE PERSONNEL TITLE COUNTY Seneca DATE 10-3-68  
 Schneider Potts  
 Mosser  
 Barbour S. R. 4 WEATHER Cloudy-Windy  
 Redding SEC. TEMP. 50°  
 DESCRIPTION Ties for Control Points JOB NO.



PERSONNEL TITLE PERSONNEL TITLE COUNTY Seneca DATE 10-3-68  
 Schneider Potts S. R. 4 WEATHER Cloudy-Windy  
 Barrett READING SEC. TEMP. 50°

DESCRIPTION Ties for Control Points JOB NO.



PERSONNEL	TITLE	PERSONNEL	TITLE	COUNTY	DATE	WEATHER	TEMP
E. Krabill				Seneca			
T. Kowalecki							
D. Brooks							

DESCRIPTION	LEFT	CENTER LINE	RIGHT	JOB NO.
-------------	------	-------------	-------	---------

