

O.D.O.T. DISTRICT 2 SURVEY OFFICE (USE ONLY)

PERSONNEL

REFERENCE NO. 26 A

SHEET 13 OF 15

NOTES CORDES

DATE 5/30/01

ROUTE SR 4

H.C. BROWN

WEATHER RAIN/WIND

COUNTY SENECA

R.C. HOMAN

TEMP. 60°

TOWNSHIP REED

DWG BY NASON

PID 107060

SECTION 6

T 2 N R 18 E

TYPE MONUMENT P.K./WASHER

ON SURFACE - ~~BELOW~~ ON

OFFSET ☐ PAVEMENT ON LT : RT

10.5' TO RT EDGE PAVEMENT

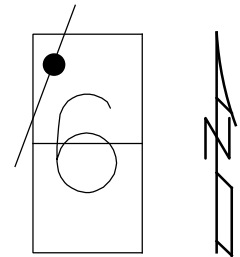
STATION: 669+81

HORIZ.DATUM: NAD83 (2011)

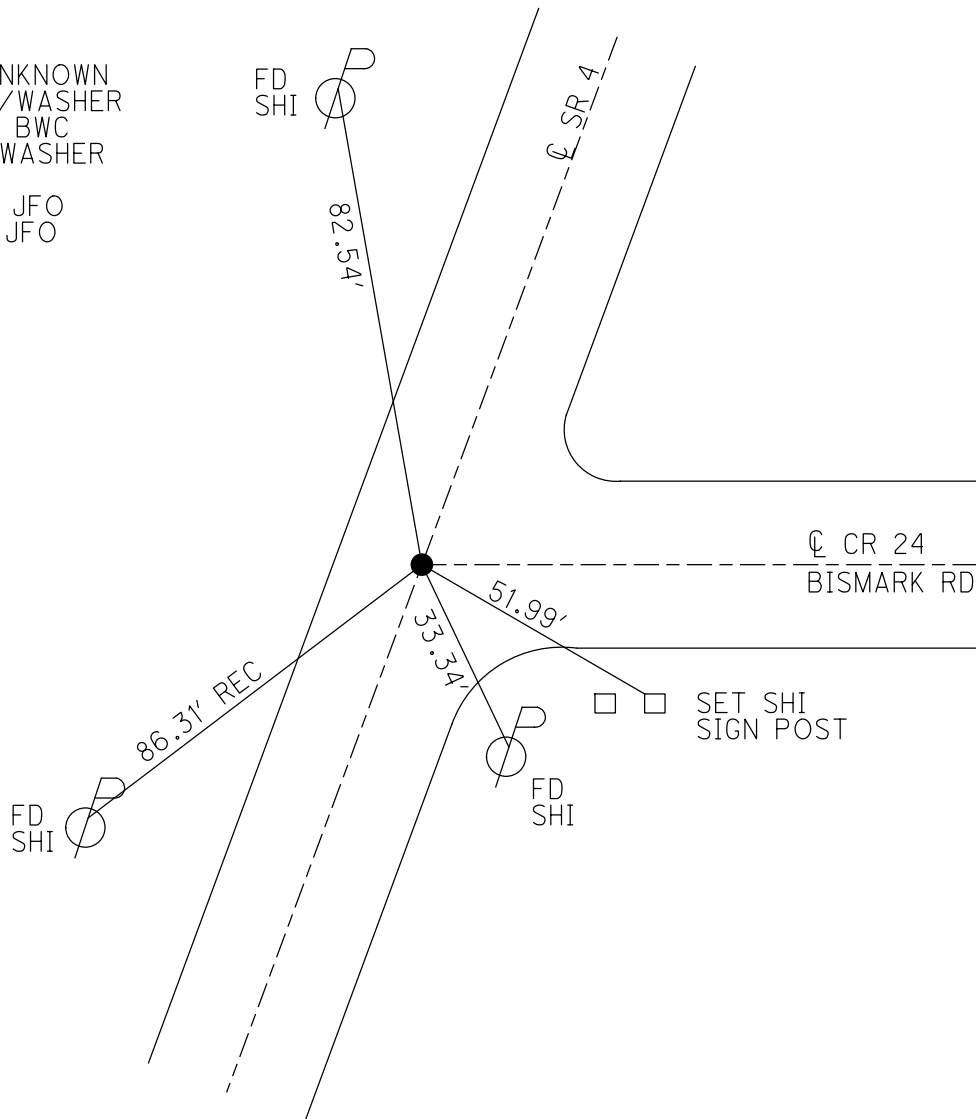
GEOID: 2012A

GRID: NORTHING: 546434.682

EASTING: 1874786.382



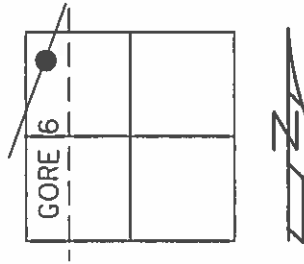
RECORD:  
 ORIGIN UNKNOWN  
 SET P.K./WASHER  
 7/02/01, BWC  
 FD P.K./WASHER  
 REFA26  
 2/26/19, JFO  
 8/19/19, JFO



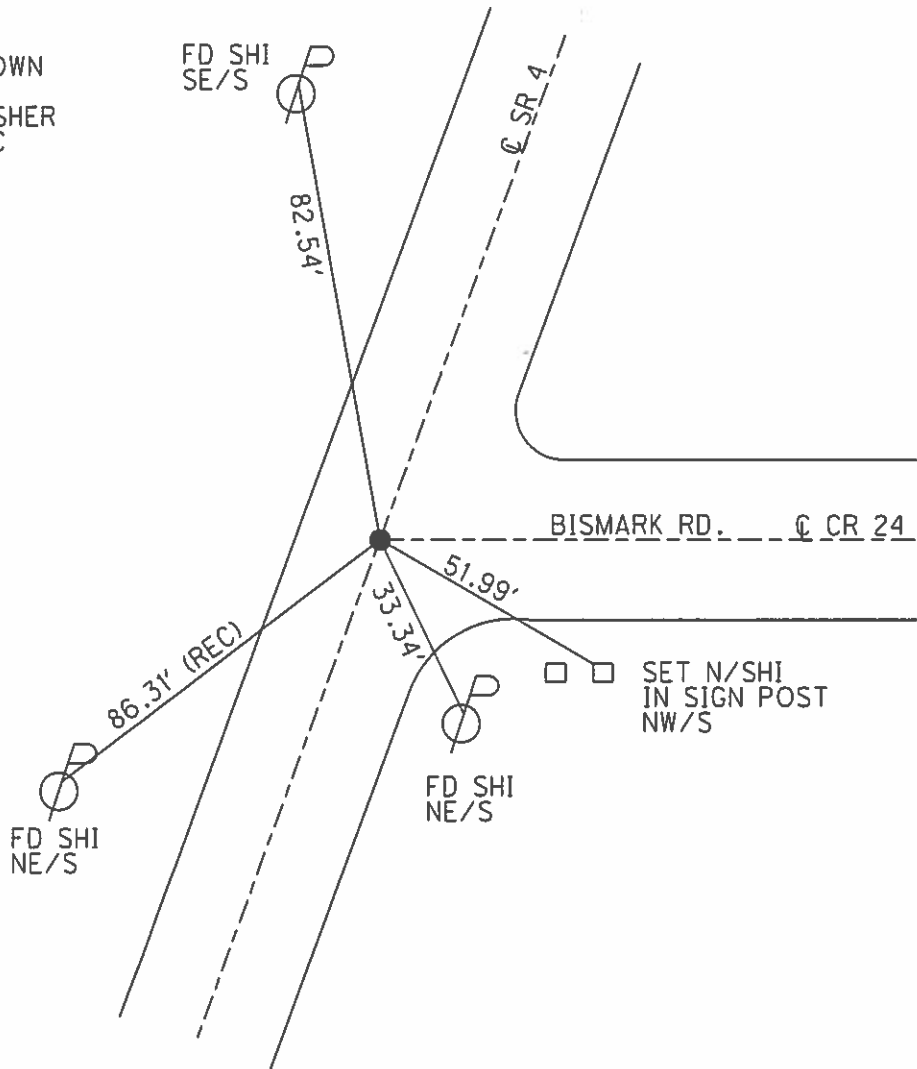
O.D.O.T. DISTRICT 2 SURVEY OFFICE (USE ONLY)

PERSONNEL \_\_\_\_\_ REFERENCE NO. 26 A SHEET 54 OF 56  
 NOTES CORDES DATE 5/30/01 ROUTE SR 4  
 H.C. BROWN WEATHER RAIN/WIND COUNTY SENECA  
 R.C. HOMAN TEMP. 60° TOWNSHIP REED  
 \_\_\_\_\_ SECTION 6  
 \_\_\_\_\_ T 2 N R 18 E

TYPE MONUMENT P.K./WASHER  
 ON SURFACE - ~~BELOW~~ ON  
 LEFT - ☉ PAV'T - RIGHT ON  
10.6' TO RT EDGE PAVEMENT  
 S.L.M. 669+81  
 GRID: NORTHING: \_\_\_\_\_ EASTING: \_\_\_\_\_



ORIGIN UNKNOWN  
 SET P.K./WASHER  
 7/02/01, BWC



O.D.O.T. DISTRICT 2 SURVEY OFFICE

PERSONNEL

REFERENCE NO. 26-A

SHEET 18 OF 19

NOTES CORDES

H.C. BROWN

R.C. HOMAN

DATE 5-30-01

WEATHER RAINY/WIND

TEMP. 60°

ROUTE 4

COUNTY SENECA

TOWNSHIP ZEED

SECTION 6

T 2N R 18 E

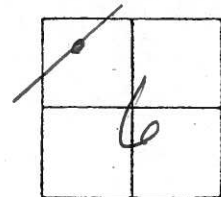
TYPE MONUMENT PK + WASHER

ON SURFACE - ~~NO~~ YES

~~NO~~ - PAV'T. - ~~NO~~ YES

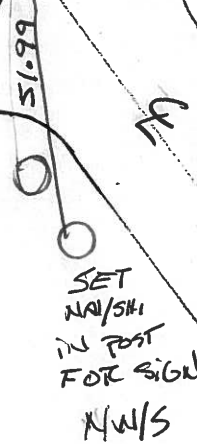
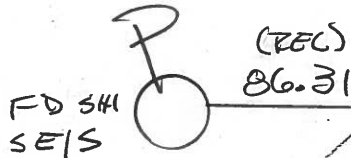
10.6 TO RT EDGE PAVEMENT

S.L.M. 669+81



ORIGIN UNKNOWN

SET PK + WASHER  
7/2/01  
BWC



SR 4

CR PAV'T

CR PAV'T  
CR 24

O.D.O.T. DISTRICT 2 SURVEY OFFICE

PERSONNEL

REFERENCE NO. 26-A

SHEET 48 OF 50

NOTES CHENEY

H.C. RIPPLE

R.C. BARBOUR

GEYMAN

DATE 7-28-1993

WEATHER FAIR

TEMP. 85°

ROUTE #4

COUNTY SENECA

TOWNSHIP REED

SECTION 6

T2N R18E

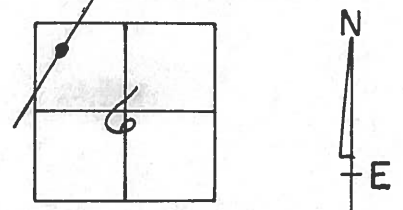
TYPE MONUMENT PK/WASHER

ON SURFACE - ~~BELOW~~ ON

~~10.6 TO RT. EDGE PAV'T.~~ ON

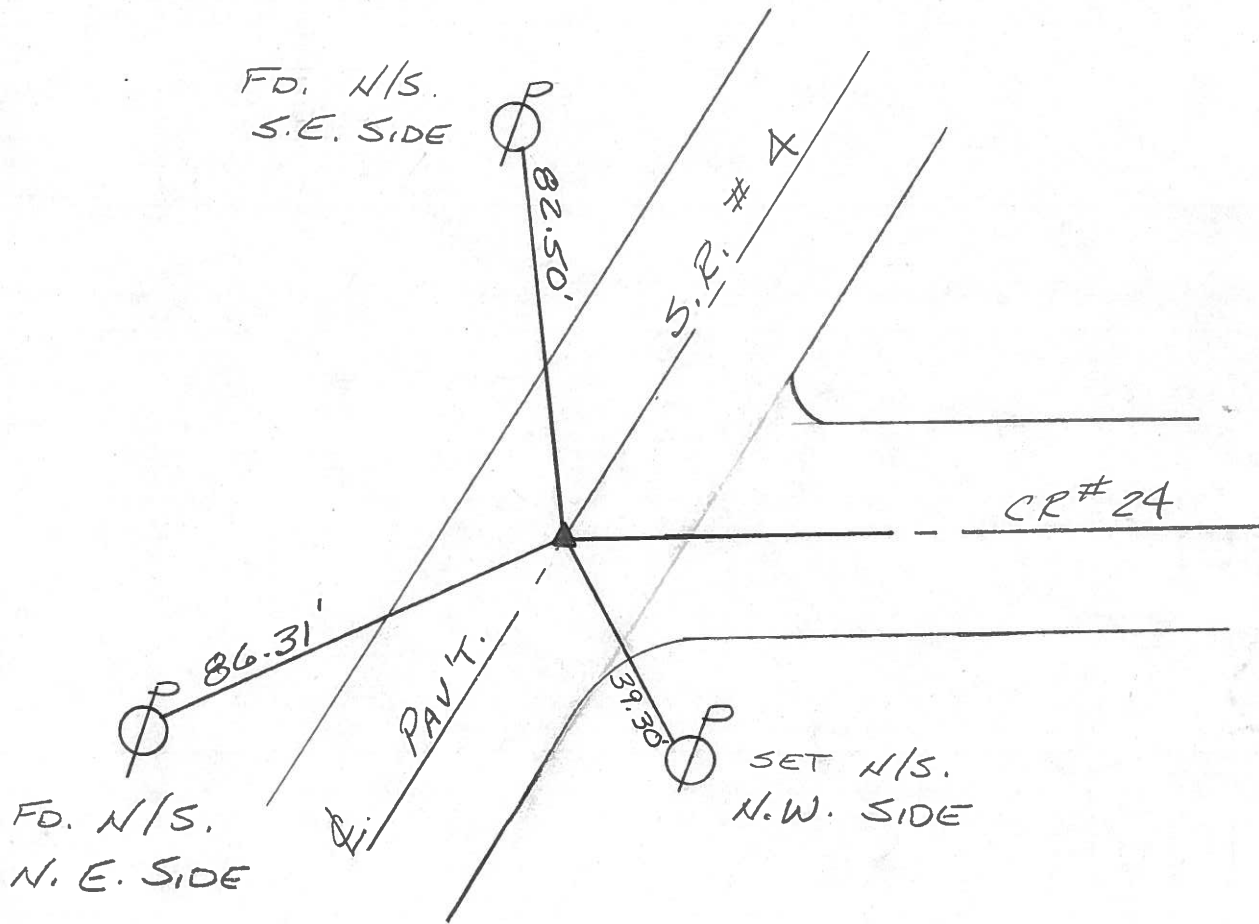
10.6 TO RT. EDGE PAVEMENT

S.L.M. 669+81



ORIGIN UNKNOWN

SET PK/WASHER  
10-13-1993  
RCC



O.D.O.T. DISTRICT 2 SURVEY OFFICE

PERSONNEL

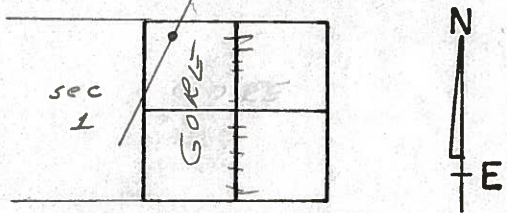
NOTES Cranin  
 H.C. Ripple  
 R.C. Barbour  
Geyman

REFERENCE NO. 25  
 DRAWN 12/11/87  
 DATE 5/21/87  
 WEATHER sunny  
 TEMP. 78°

SHEET 22 OF \_\_\_\_\_  
 ROUTE #4  
 COUNTY Seneca  
 TOWNSHIP Reed  
 SECTION GORE  
T 2 N R 17 E

TYPE MONUMENT P.K. & Washer  
 ON SURFACE - BELOW on surface  
 LEFT - & PAV'T. - RIGHT & Pav't.  
 TO \_\_\_\_\_ EDGE PAVEMENT  
 S.L.M. \_\_\_\_\_

**25B**



P.O.T.??  
667+20 ±  
P.R spike 5 1/2"  
below surface

