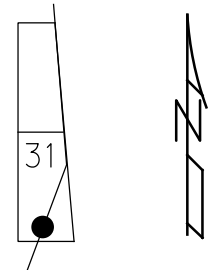


O.D.O.T. DISTRICT 2 SURVEY OFFICE (USE ONLY)

PERSONNEL _____ REFERENCE NO. 26 B SHEET 14 OF 15
 NOTES CORDES DATE 6/1/01 ROUTE SR 4
 H.C. BROWN WEATHER RAIN COUNTY SENECA
 R.C. HOMAN TEMP. 60° TOWNSHIP THOMPSON
 DWG BY NASON PID 107060 SECTION 31
 T 3 N R 18 E

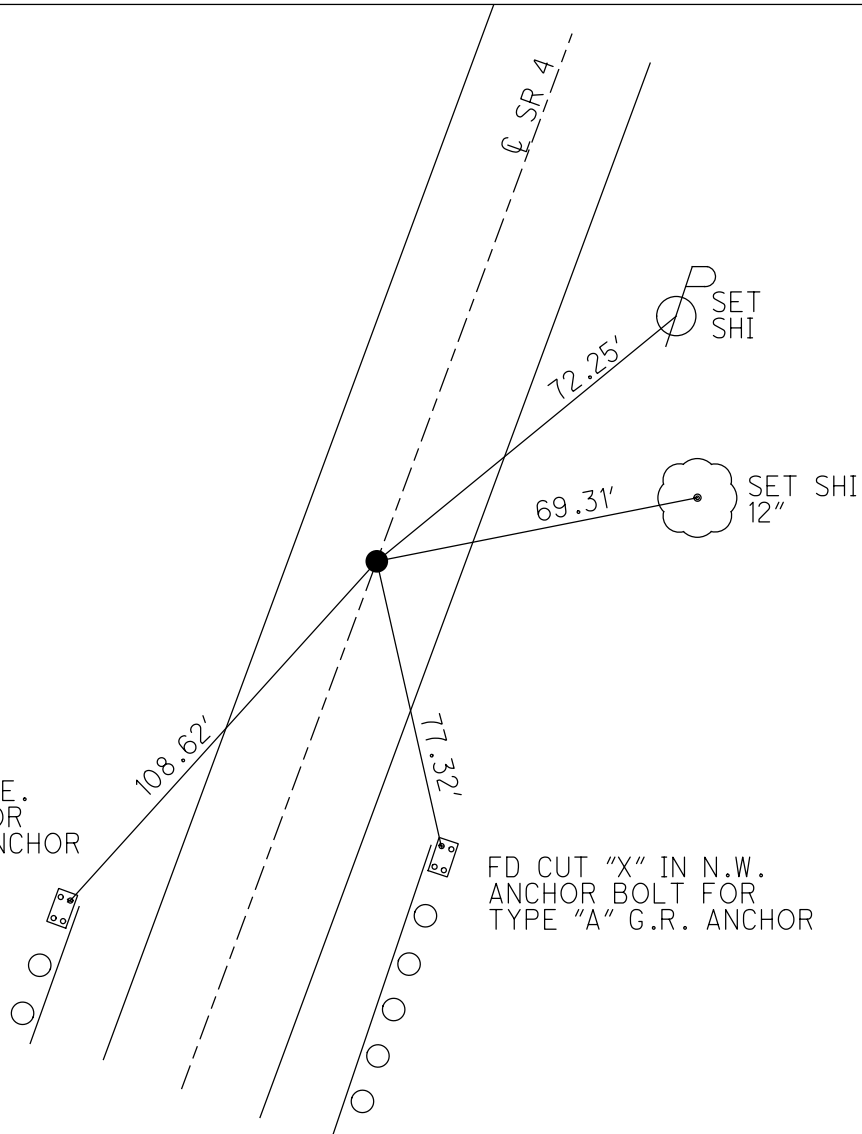
TYPE MONUMENT P.K./WASHER
 ON SURFACE - ~~BELOW~~ ON
 OFFSET Q PAVEMENT ON LT : RT
10.5' TO RT EDGE PAVEMENT
 STATION: 685+68

HORZ. DATUM: NAD83 (2011) GEOID: 2012A
 GRID: NORTHING: 547926.763 EASTING: 1875316.170



RECORD: P.I.
 STA. 683+04.30
 $\Delta = 00^{\circ}08'00''$ LT
 FD P.K./WASHER
 ATOP R.R.SPIKE
 12/11/1987
 SET P.K./WASHER
 7/02/01, BWC
 FD P.K./WASHER
 REFB26
 2/26/19, JFO
 8/19/19, JFO

FD CUT "X" IN N.E.
 ANCHOR BOLT FOR
 TYPE "A" G.R. ANCHOR

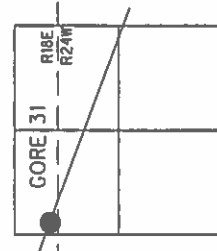


FD CUT "X" IN N.W.
 ANCHOR BOLT FOR
 TYPE "A" G.R. ANCHOR

O.D.O.T. DISTRICT 2 SURVEY OFFICE (USE ONLY)

PERSONNEL	REFERENCE NO.	<u>26 B</u>	SHEET	<u>55</u>	OF	<u>56</u>
NOTES	CORDES	DATE	<u>6/01/01</u>	ROUTE	<u>SR 4</u>	
H.C.	<u>BROWN</u>	WEATHER	<u>RAIN</u>	COUNTY	<u>SENECA</u>	
R.C.	<u>HOMAN</u>	TEMP.	<u>60°</u>	TOWNSHIP	<u>REED</u>	
				SECTION	<u>31</u>	
				<u>T 2 N</u>	<u>R 18 E</u>	

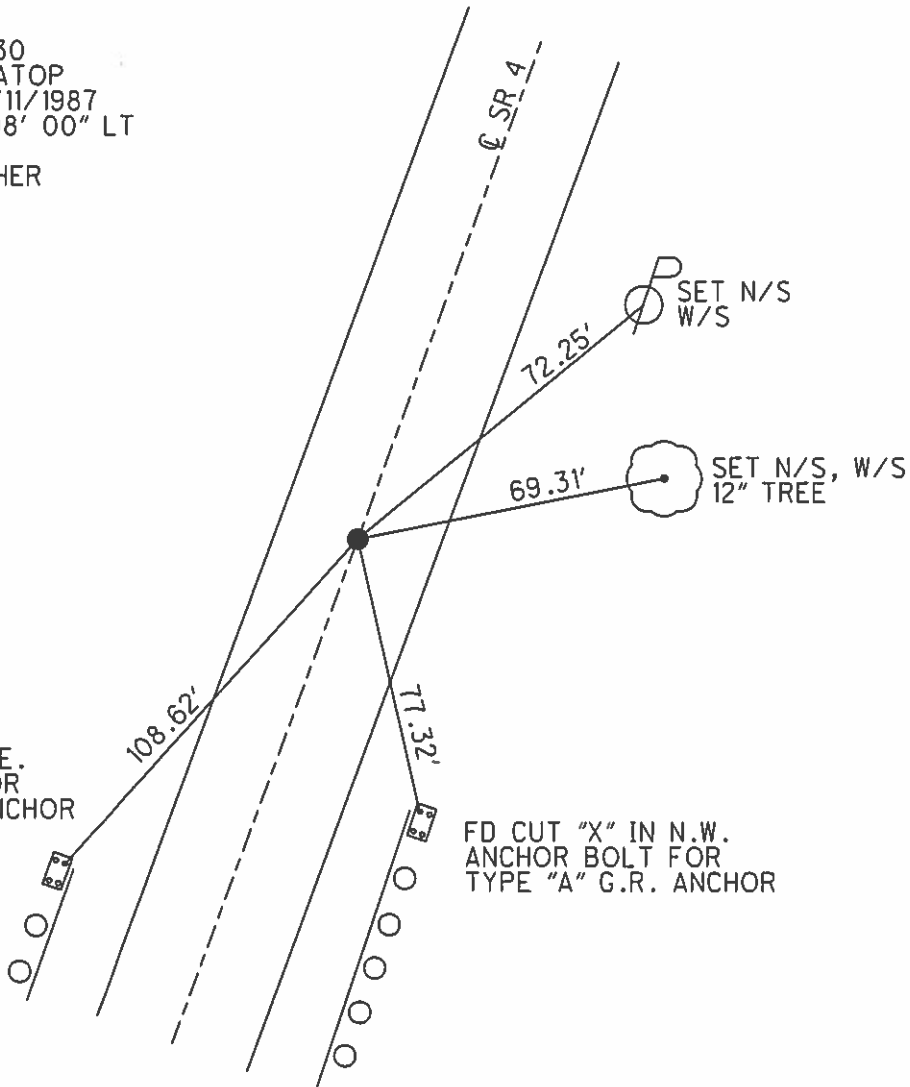
TYPE MONUMENT P.K./WASHER
 ON SURFACE - BELOW ON
 LEFT - ☉ PAV'T - RIGHT ON
10.5' TO RT EDGE PAVEMENT
 S.L.M. 685+68
 GRID: NORTHING: _____ EASTING: _____



RECORD:
 STA. 683+04.30
 P.K./WASHER ATOP
 R.R.SPIKE, 12/11/1987
 P.I. Δ = 00° 08' 00" LT

SET P.K./WASHER
 7/02/01, BWC

FD CUT "X" IN N.E.
 ANCHOR BOLT FOR
 TYPE "A" G.R. ANCHOR



FD CUT "X" IN N.W.
 ANCHOR BOLT FOR
 TYPE "A" G.R. ANCHOR

O.D.O.T. DISTRICT 2 SURVEY OFFICE

PERSONNEL

REFERENCE NO. 26-B

SHEET 19 OF 19

NOTES Cordes

H.C. Brown

R.C. Homan

DATE 6-1-01

WEATHER Rain

TEMP. 60°

ROUTE 4

COUNTY Seneca

TOWNSHIP Thompson

SECTION 31

T2 N R 18 E

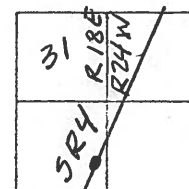
TYPE MONUMENT PK/Washer

ON SURFACE - ~~BLK~~ On

~~BLK~~ - PAV'T. - ~~BLK~~ On

10.5' TO Rt EDGE PAVEMENT

S.L.M. 685+68



Record: 12-11-1987

Sta. 683+04.30

PK/Washer Atop RR Spk

P.I. $\Delta = 00^{\circ}08'00''$ Lt.

Set PK/Washer
7-2-01 BWC

FOUND
Cut "X" in N.E.
Anchor Bolt For
Type "A" G.R.
Anchor

108.62' (Rec)

72.25'

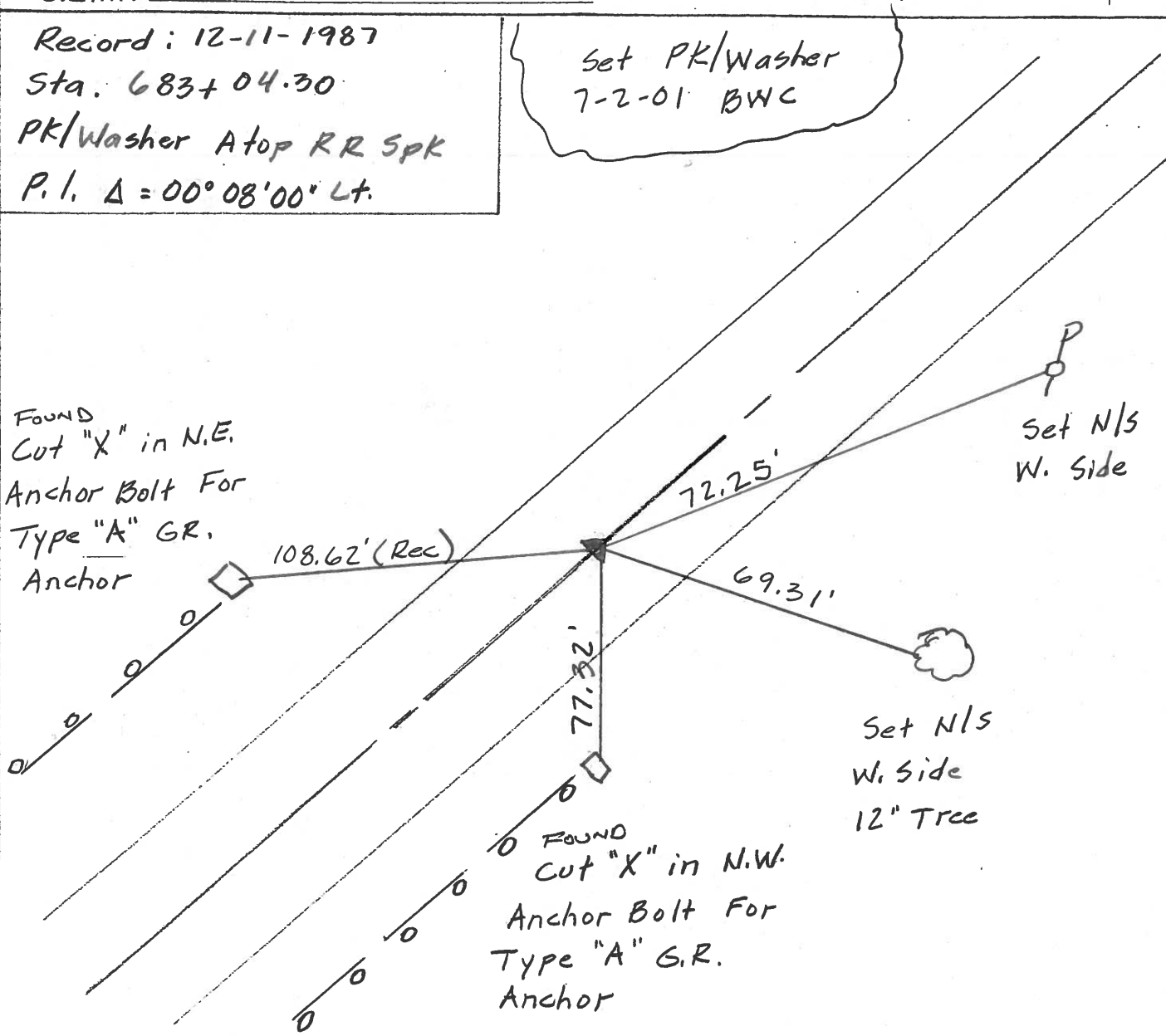
69.31'

77.32'

Set N/S
W. Side

Set N/S
W. Side
12" Tree

FOUND
Cut "X" in N.W.
Anchor Bolt For
Type "A" G.R.
Anchor



O.D.O.T. DISTRICT 2 SURVEY OFFICE

PERSONNEL

REFERENCE NO. 20-B

SHEET 49 OF 50

NOTES CHENEY

H.C. RIPPLE

R.C. BARBOUR

GEYMAN

DATE 7-28-1993

WEATHER FAIR

TEMP. 85°

ROUTE #4

COUNTY SENECA

TOWNSHIP THOMPSON

SECTION 31

T2N R18E

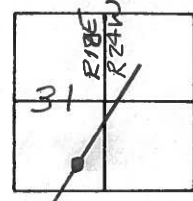
TYPE MONUMENT R.R. SPK.

~~CONC~~ SURFACE - BELOW 2"±

~~LEFT~~ - CL PAV'T. - ~~RIGHT~~ ON

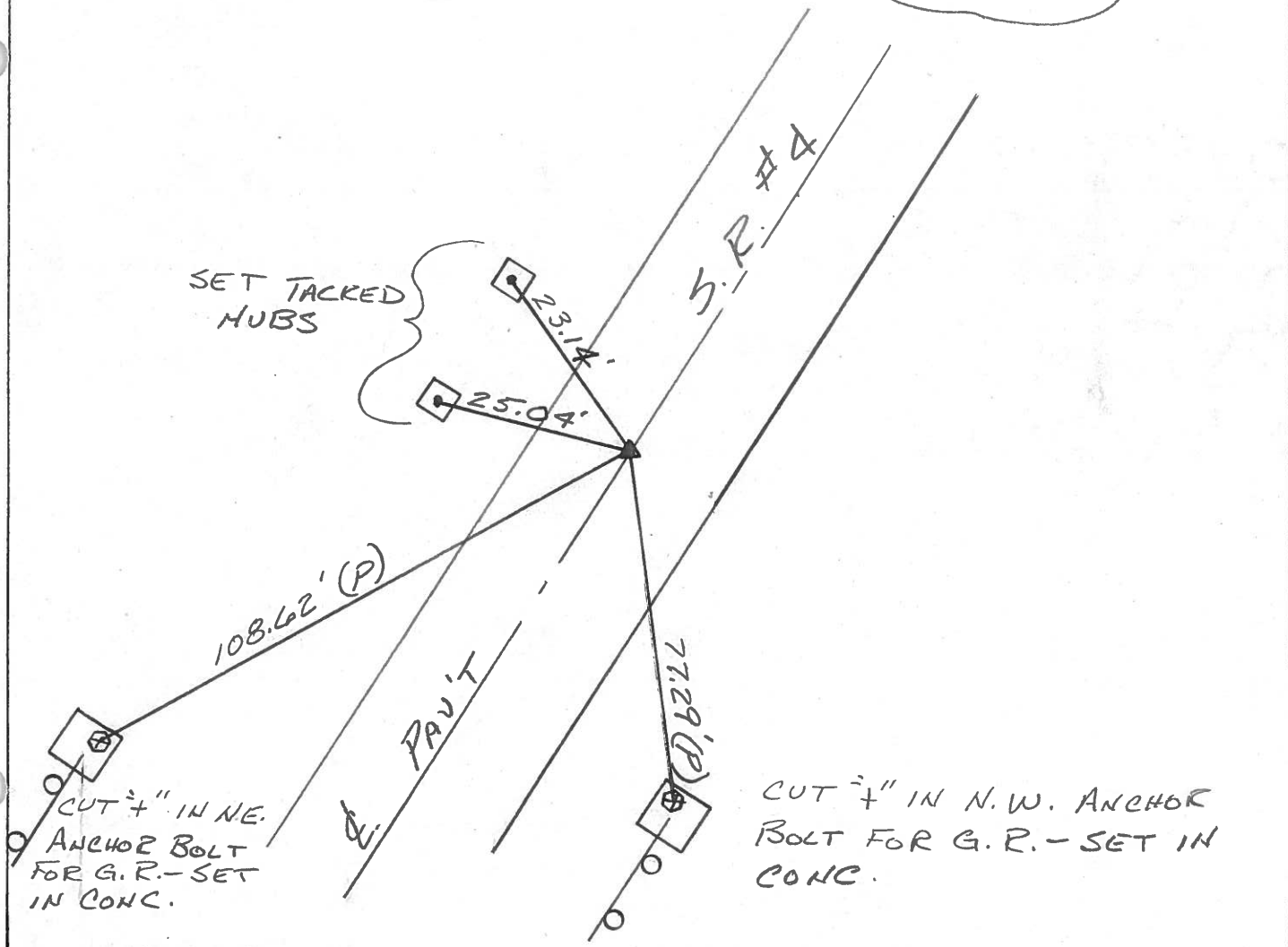
10.5 TO RT. EDGE PAVEMENT

S.L.M. 685+68



RECORD: 12-11-1987
 P.I. STA. 683+04.30
 $\Delta = 00^{\circ}08'00''$ LT.

SET PK/WASHER
 10-13-1993
 RCC



CUT 1/4" IN N.W. ANCHOR
 BOLT FOR G.R. - SET IN
 CONC.

O.D.O.T. DISTRICT 2 SURVEY OFFICE

PERSONNEL _____

REFERENCE NO. _____

SHEET 23 OF _____

NOTES Cronin

H.C. Ripple

R.C. Barbour

Geyman

DATE 12/11/87

WEATHER overcast

TEMP. 45°

ROUTE S.R. # 4

COUNTY Seneca

TOWNSHIP Thompson

SECTION GORE

T 3 N R 17 E

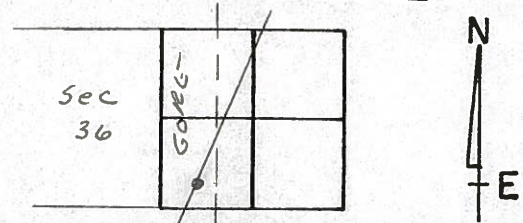
TYPE MONUMENT PK or R.R. spike

ON SURFACE - BELOW 2" ± below surface

LEFT - ☉ PAV'T. - RIGHT ☉ Pav't.

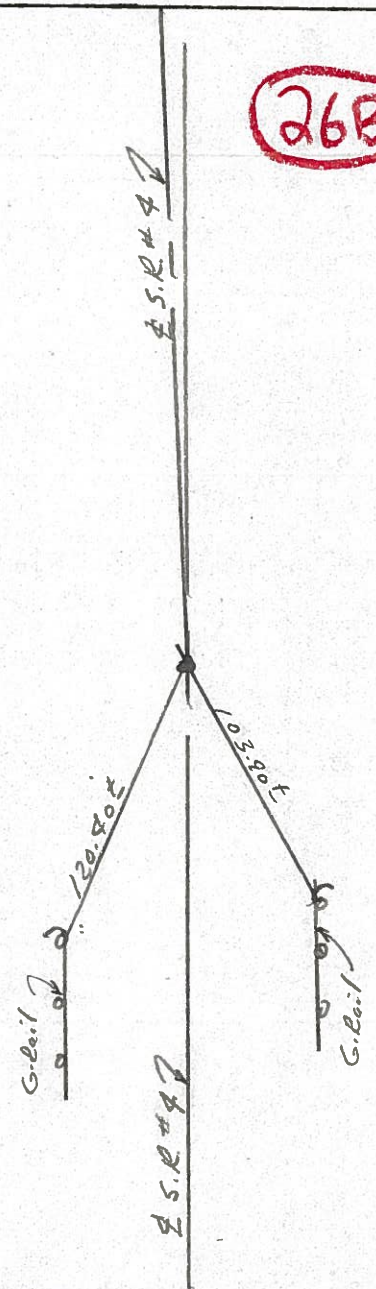
TO _____ EDGE PAVEMENT

S.L.M. _____

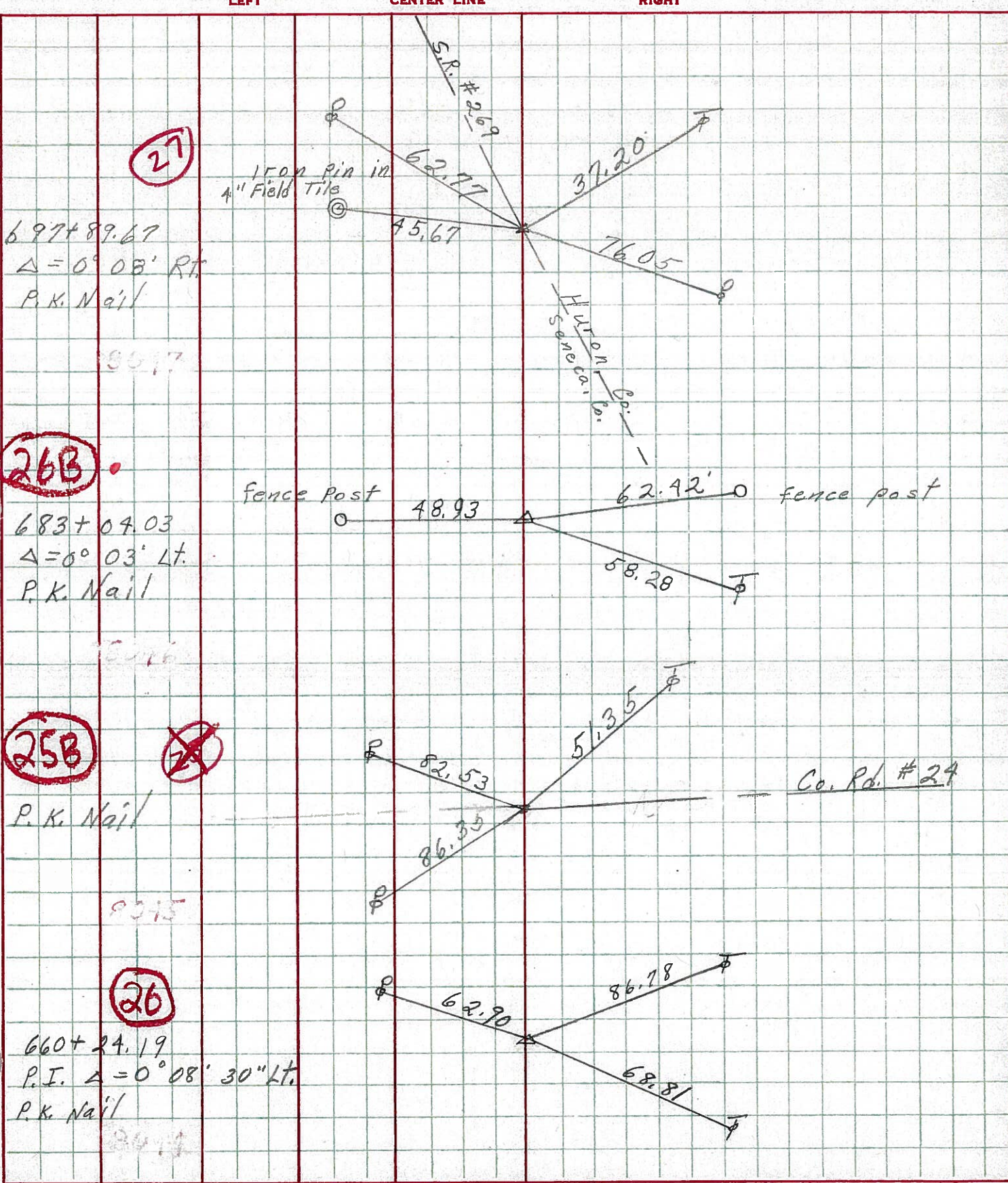


26B

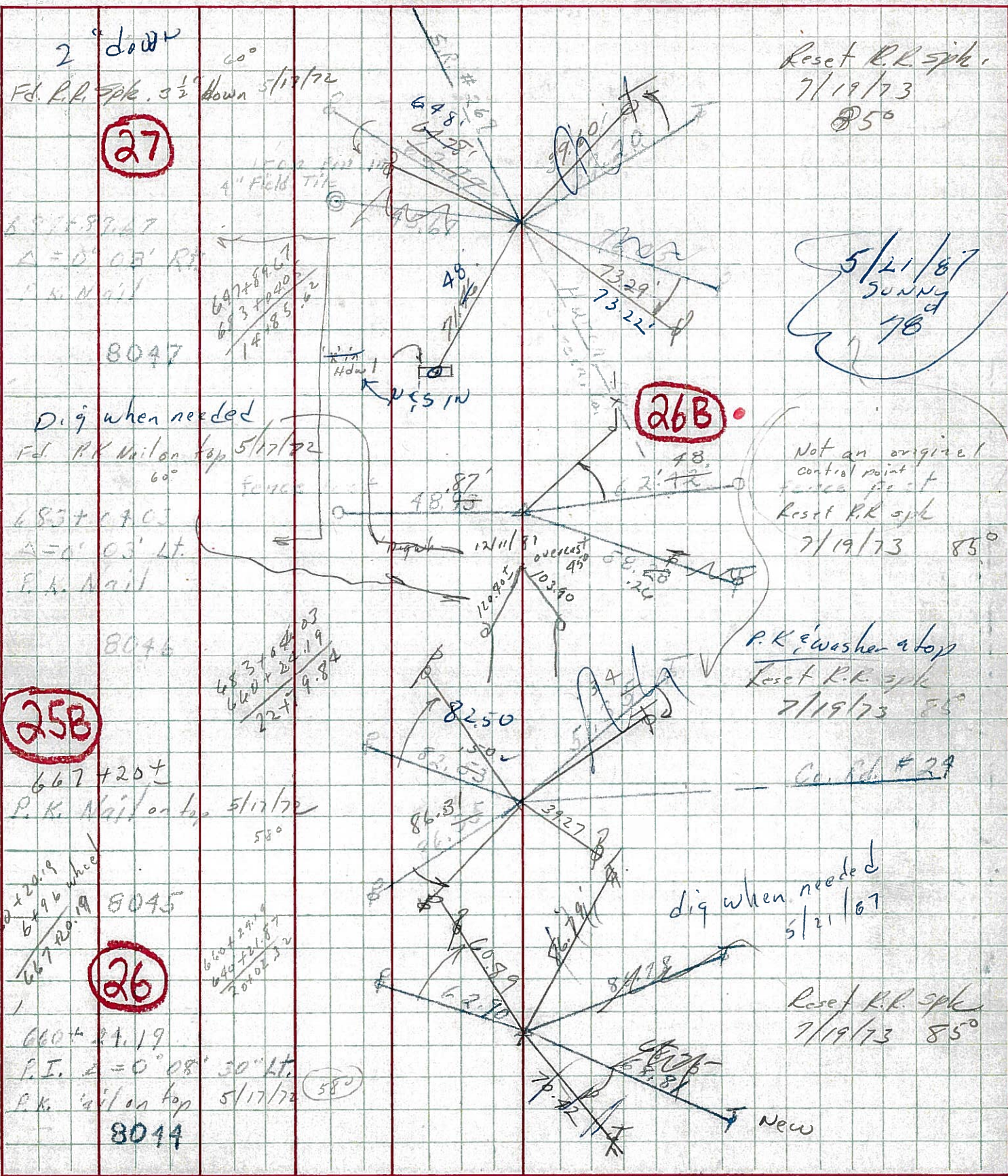
P.I. Δ = 00° 08' 00" Lt.
683+0430



PERSONNEL TITLE PERSONNEL TITLE COUNTY DATE
 Schneider Potts Seneca 10-3-68
 Mosser _____ S. R. 4 WEATHER Cloudy-windy
 Barbour _____ SEC. _____ TEMP. 50°
 Redding _____
 DESCRIPTION Ties for Control Points JOB NO. _____



PERSONNEL	TITLE	PERSONNEL	TITLE	COUNTY	DATE	WEATHER	TEMP.
Hubbard		Potts		Seneca	10-3-68	Cloudy - Windy	50'
				S. R.	4		
				SEC.			
DESCRIPTION: Ties for Control Points						JOB NO.	



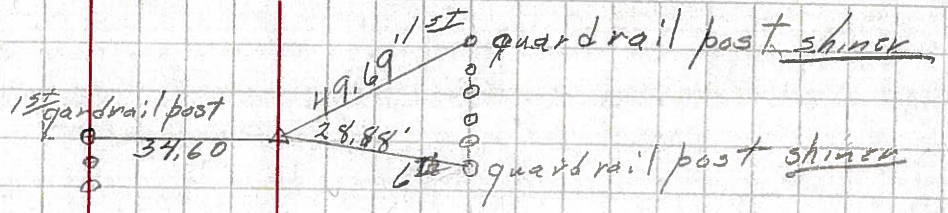
PERSONNEL TITLE PERSONNEL TITLE
 F. Krabill
 J. Kowalaski
 D. Brooks

COUNTY Seneca DATE _____
 S. R. 4 WEATHER _____
 SEC. _____ TEMP. _____

DESCRIPTION LEFT CENTER LINE RIGHT JOB NO.

630+23.27 #265
 P.I. $\Delta = 0^\circ - 06' - 30''$ LT
 P.k. nail

(25)

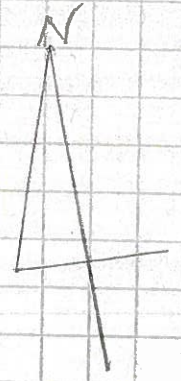
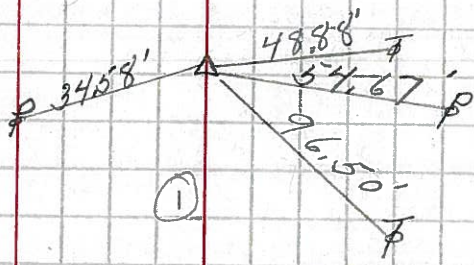


1-22-64

3/16 (1)

640+21.87 #266
 P.I. $\Delta = 0^\circ - 12' - 00''$ RT
 P.k. nail

(25A)

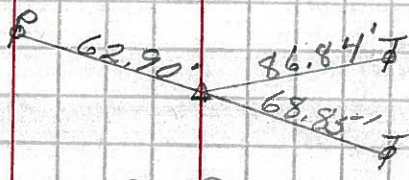


1-22-64

(1)

660+24.19 #267
 P.I. $\Delta = 0^\circ - 08' - 30''$ LT
 P.k. nail

(26)

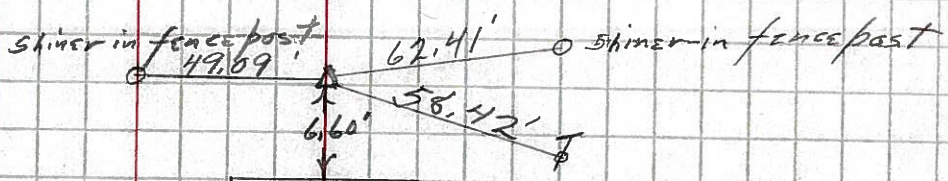


1-22-64

3/4 (6)

683+24.03 #268
 P.I. $\Delta = 0^\circ - 03' - 00''$ LT
 P.k. nail

(26B)



1-22-64

Can slab
 in
 pavement
 1/8 (6)