

SEC 6 CITY OF FOSTORIA OHIO
LOUDEN TWP T2N. R13E.
SENECA COUNTY

LOCATION PLAN

SENECA COUNTY, ROUTE #12 0.64-1.08

DEPARTMENT OF HIGHWAYS

STATE OF OHIO

I hereby certify this to be a true and correct plotting of the center line of survey as determined by the Department of Highways

Date Aug. 8, 56

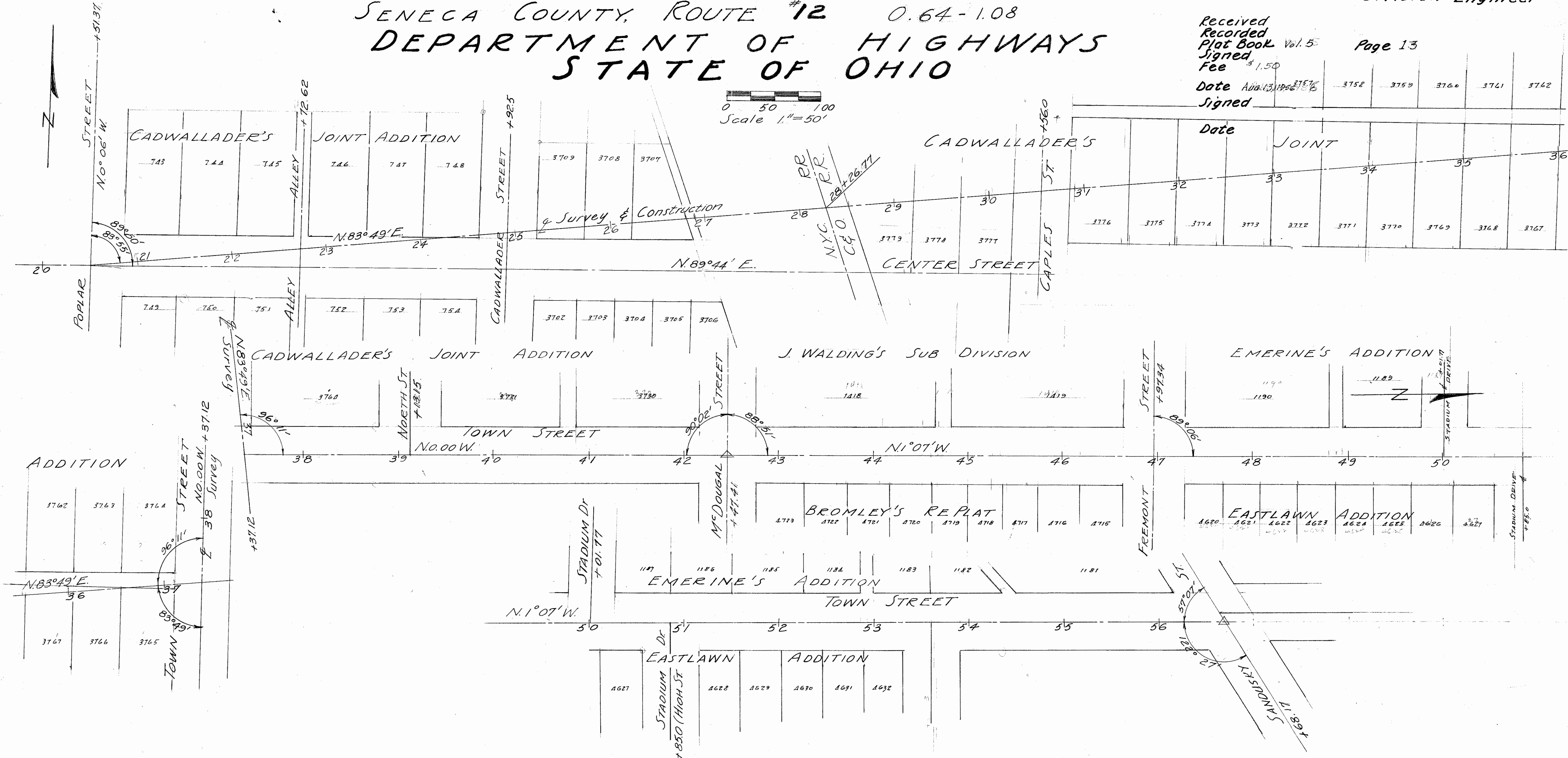
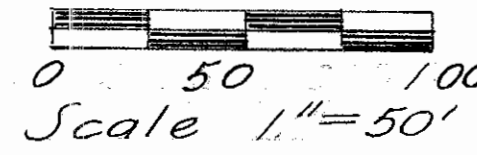
George W. Rubin
Division Engineer

Received
Recorded
Plat Book Vol. 5
Signed
Fee \$ 1.50

Page 13

Date Aug. 13, 1956
Signed

Date	JOINT
	36
	35
	34
	33
	32
	31
	30
	29
	28
	27
	26
	25
	24
	23
	22
	21

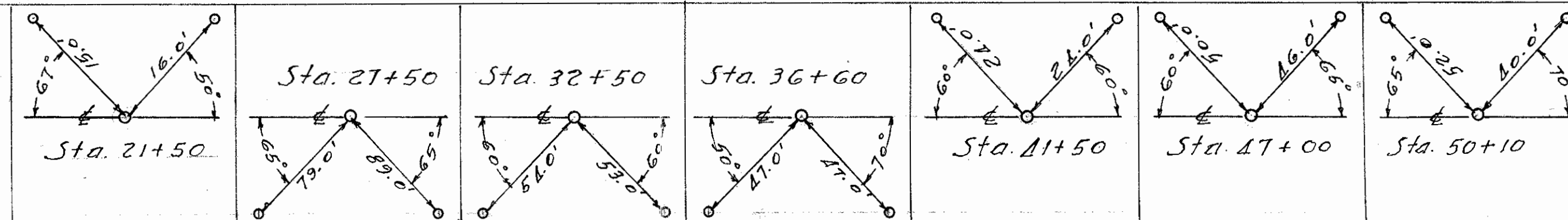


SEC. 6 LOUDEN TWP T2N R.13E.

CITY OF FOSTORIA

SENECA COUNTY

Center Line Reference Monuments Will Be Set Before Or After Construction



2661 from
July 1947

RD 12 #1
G-52

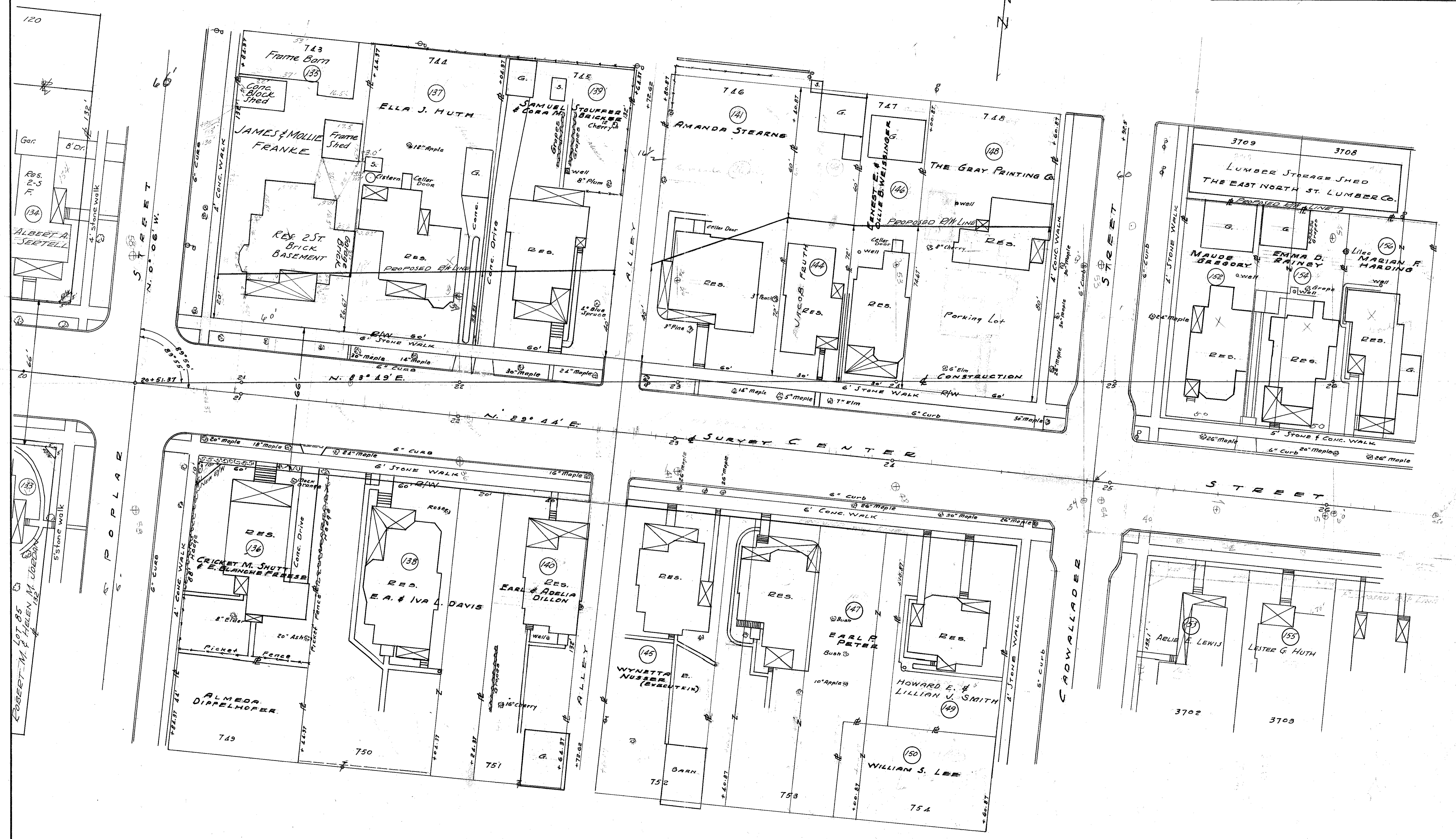
G-52

Drawn July 1967

CITY OF FOSTORIA
SEC. 6 LOUDEN TWP T. 2 N. R. 13 E
CADWALLADER'S JOINT ADDITION

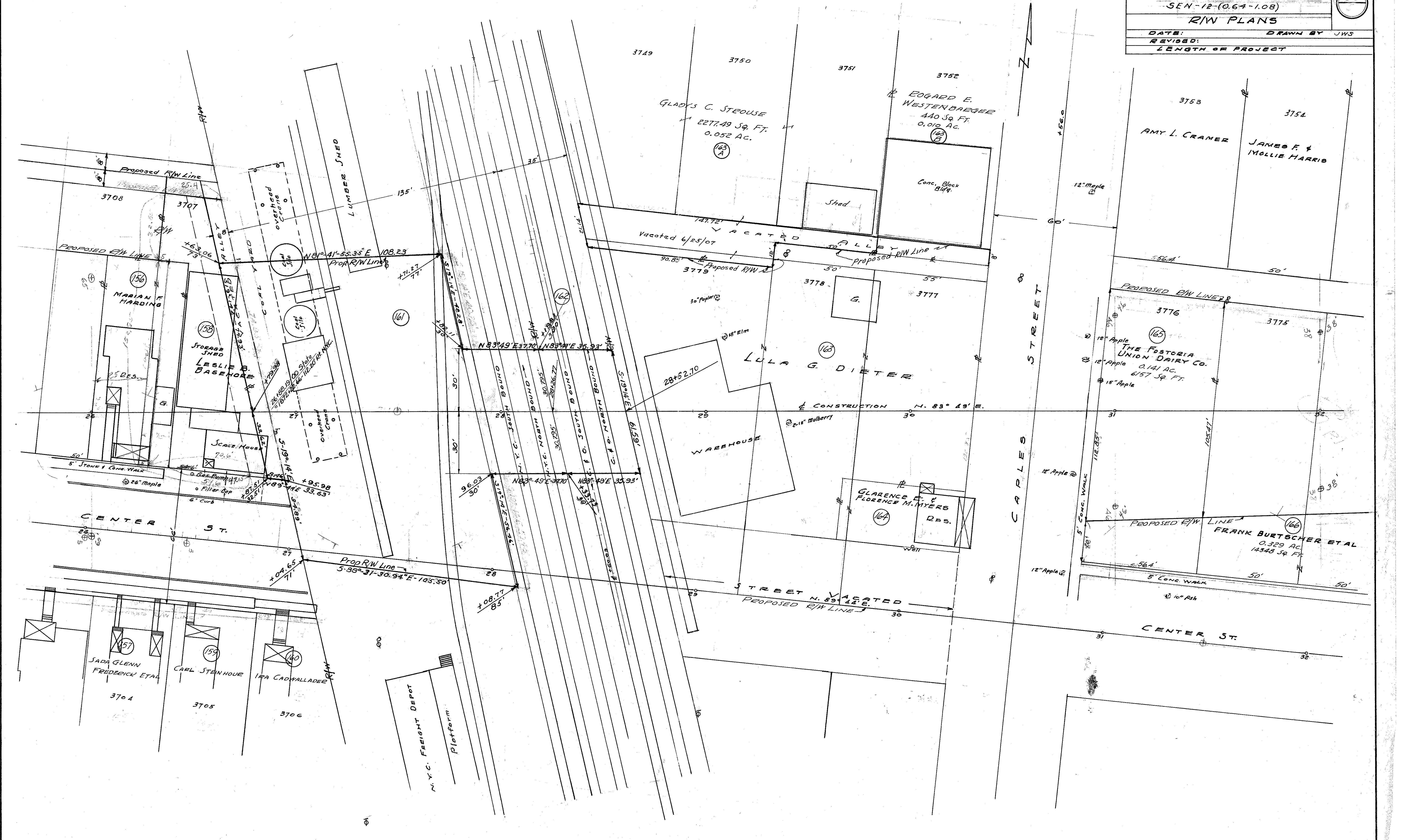
SENECA COUNTY	
SEN-12-(O. 64-1.08)	
P/W PLANS	
DATE:	DRAWN BY JWS
REVISED	LENGTH OF PROJECT

19



SENECA COUNTY	
SEN-12-(0.64-1.08)	
R/W PLANS	
DATE:	DRAWN BY JWS
REVISED:	
LENGTH OF PROJECT	

80



SENECA COUNTY

SEN-12-(0.64-1.08)

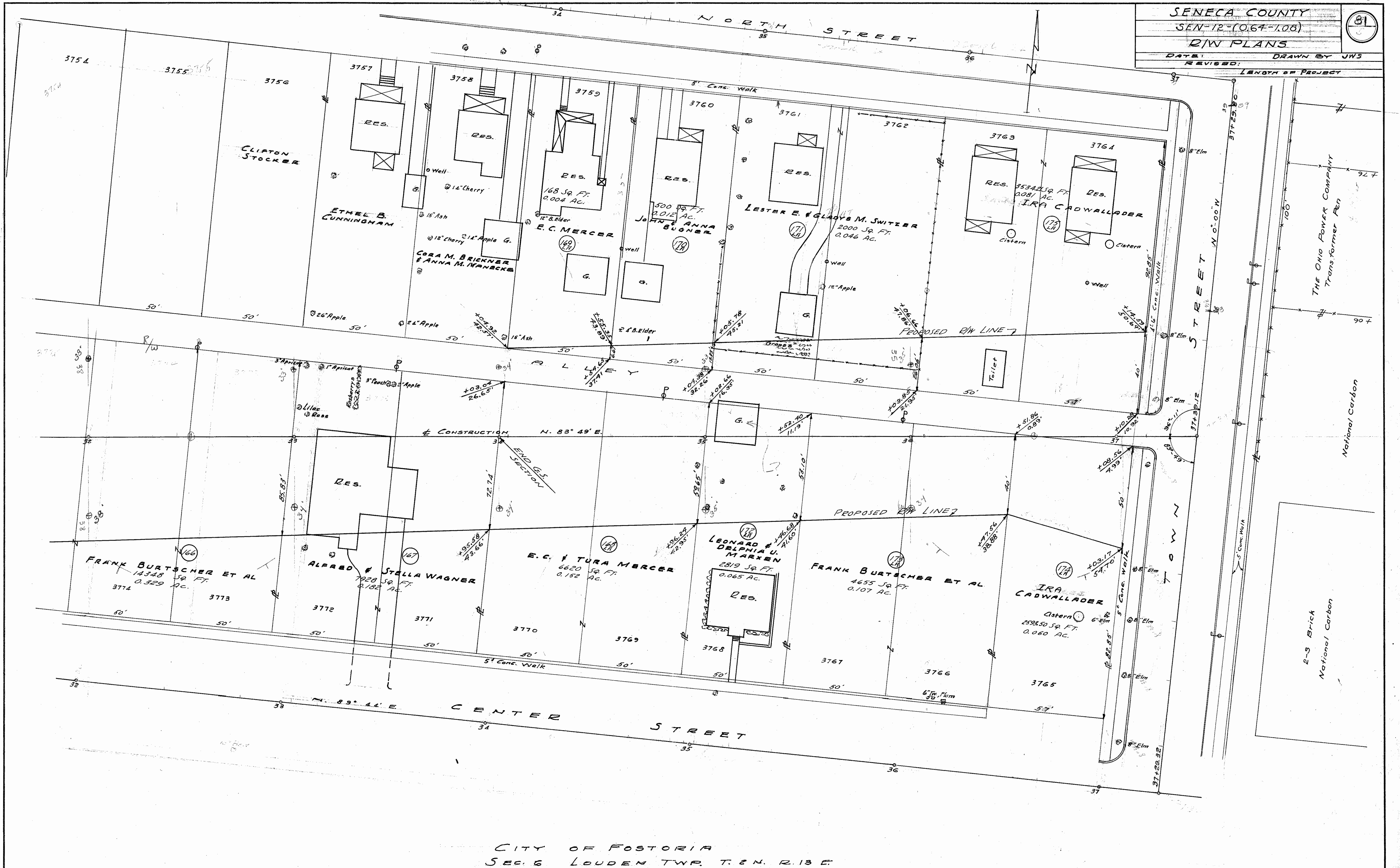
R/W PLANS

DATE: _____ DRAWN BY: JWS

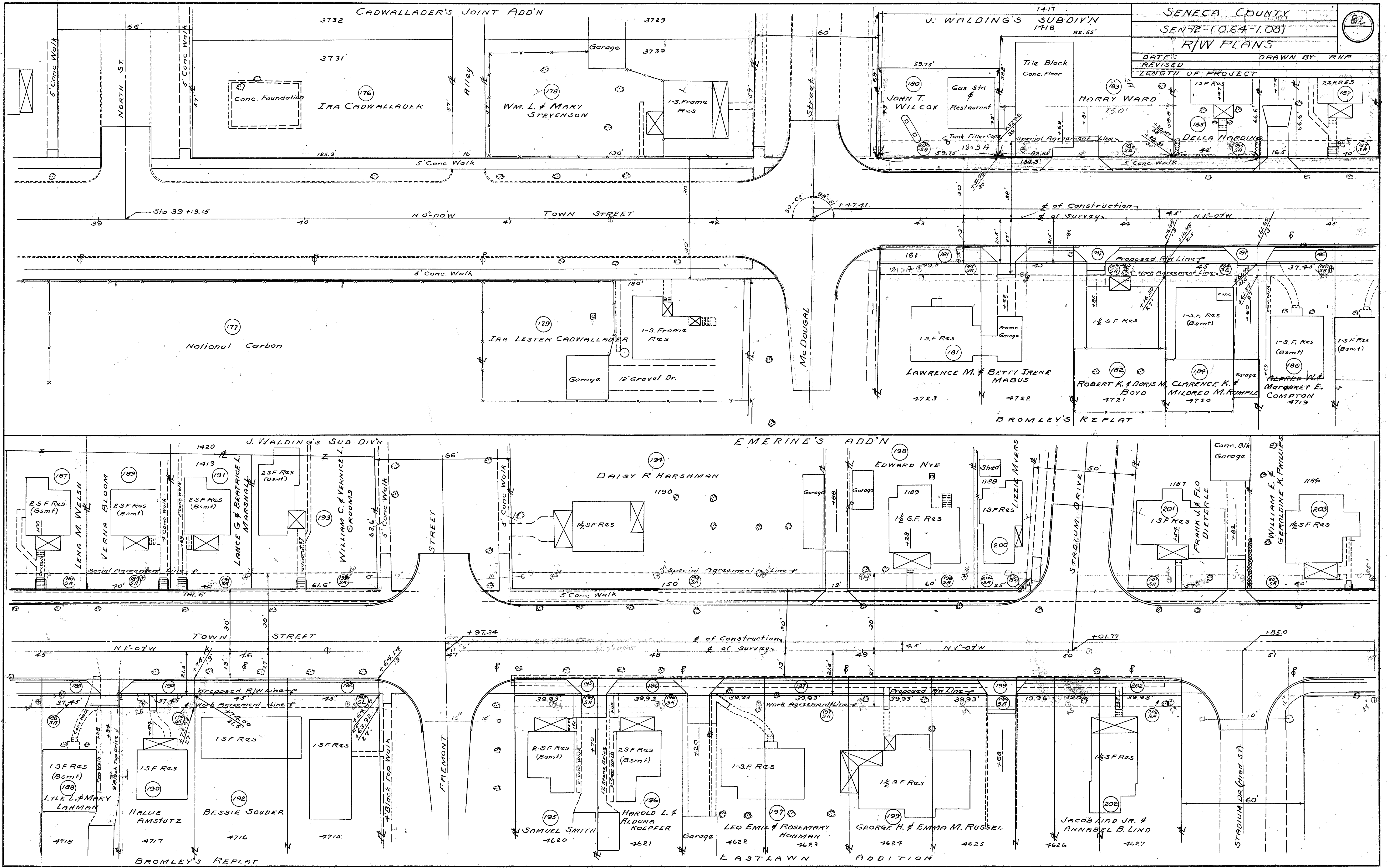
REVISID: _____

LENGTH OF PROJECT _____

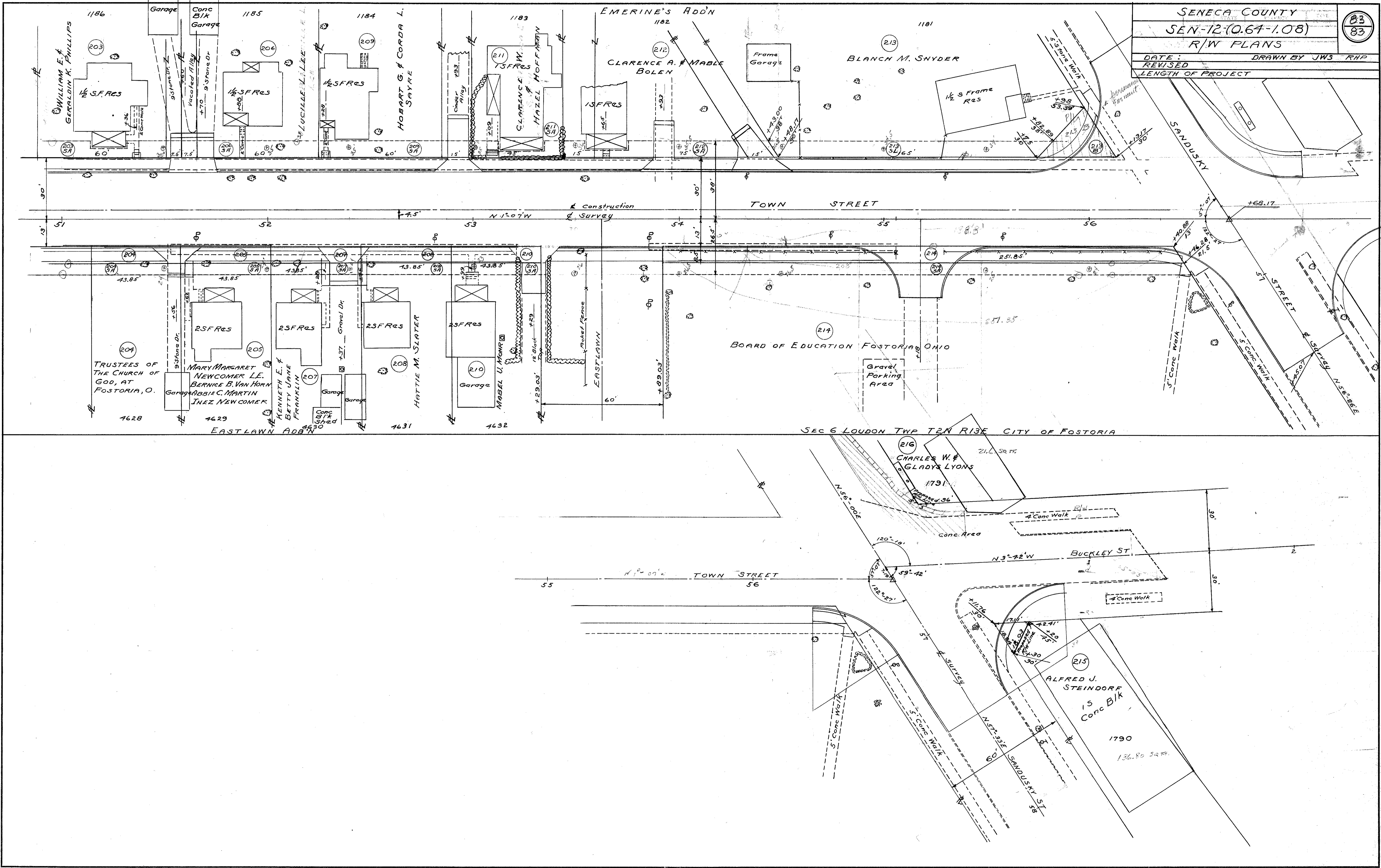
81



CITY OF FOSTORIA
SEC. 6 LOUDEN TWP. T. 2 N. R. 13 E.



SENECA COUNTY
 SEN-12-(0.64-1.08)
 R/W PLANS
 DATE: _____ DRAWN BY JWS RHP
 REVISED _____
 LENGTH OF PROJECT _____



214 SS 1790 (Copy of 1790) 0.64