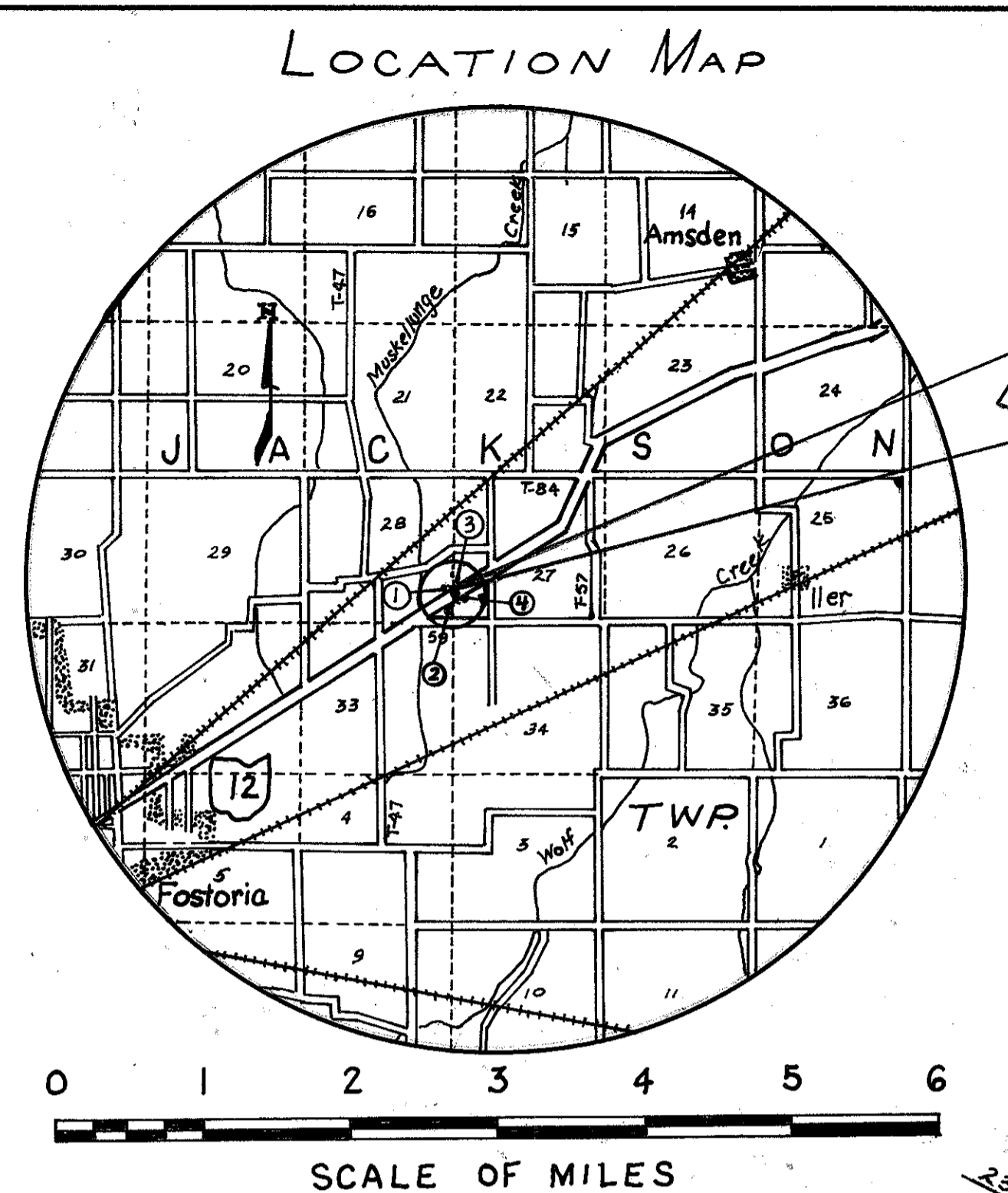
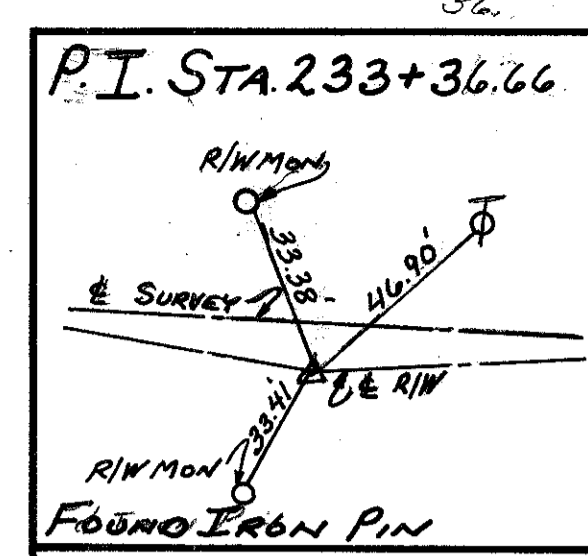
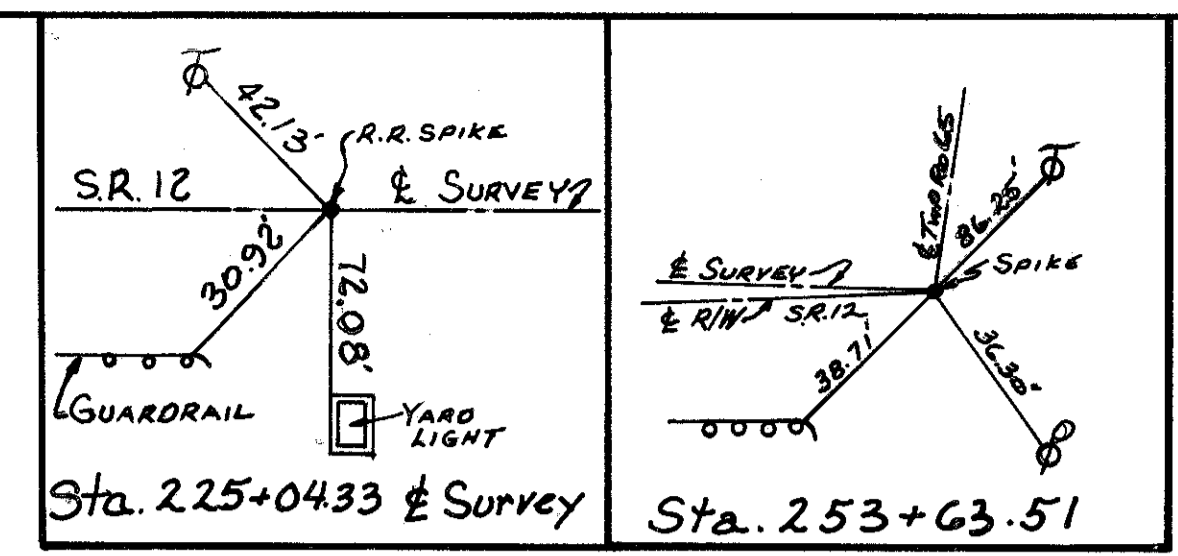


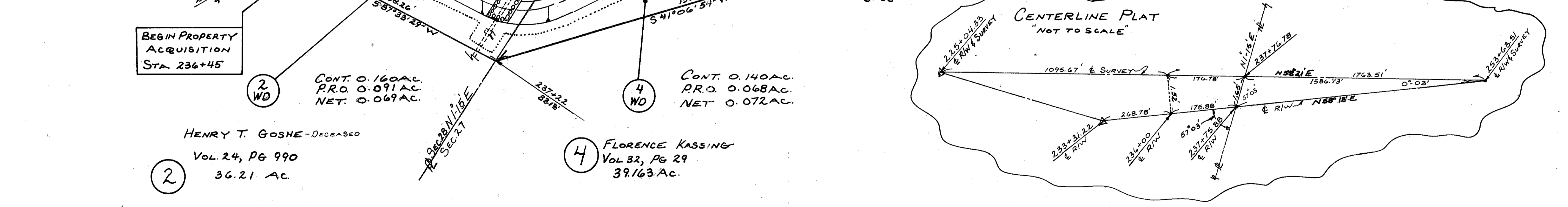
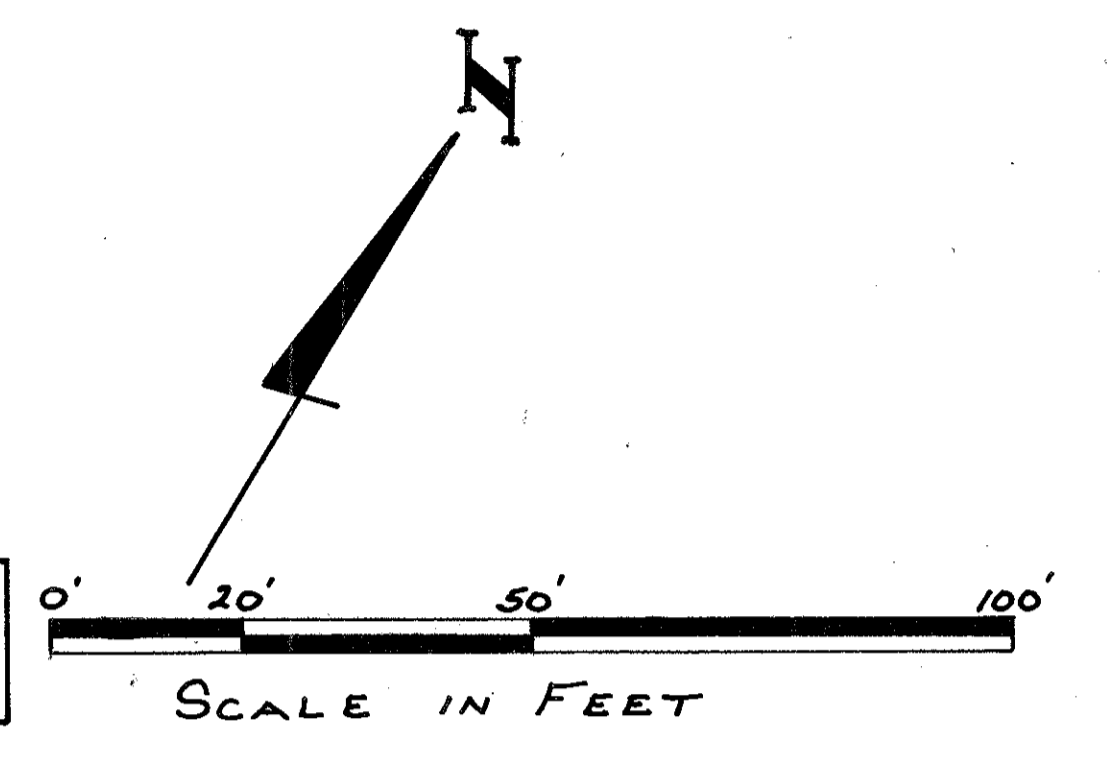
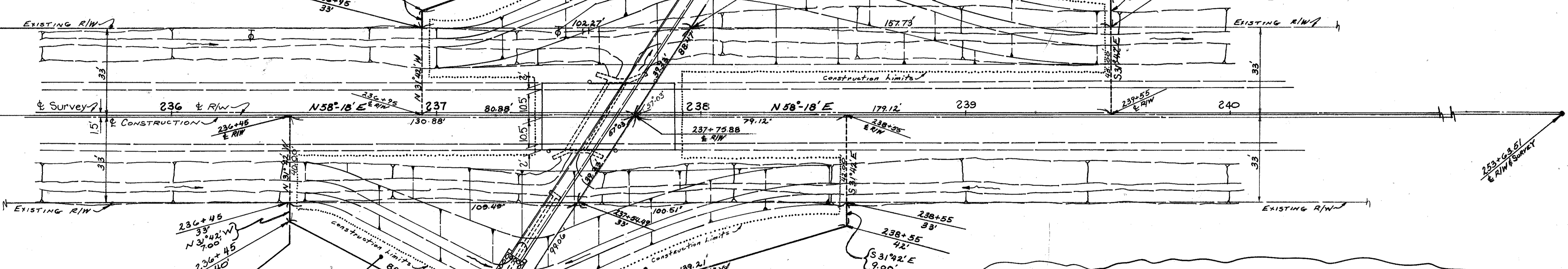
6/2



S.E 1/4, SEC. 28, JACKSON TWP T3N, R13E



FHWA REGION	STATE	PROJECT	27
5	OHIO		29
SEN 12-04.39 PART 1			1
JOB No. 625120			3



BEGIN PROPERTY ACQUISITION STA 236+45

2
HENRY T. GOSHE-DECEASED
VOL. 24, PG 990
36.21 AC

1 WD
CONT. 0.138 AC.
PRO. 0.069 AC.
NET. 0.069 AC.

3
IRVIN C. STEINMETZ
VOL 384, PG. 181
0.697 AC.
CONT. 0.220 AC.
PRO. 0.127 AC.
NET 0.093 AC.

4 WD
CONT. 0.140 AC.
PRO. 0.068 AC.
NET 0.072 AC.

4
FLORENCE KASSING
VOL 32, PG 29
39.163 AC.

R/W SUMMARY

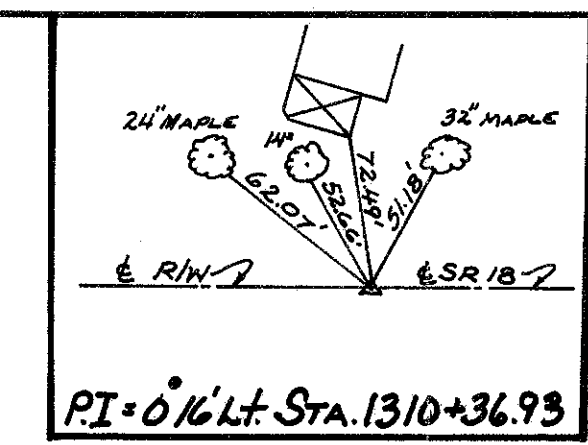
PAR NO.	OWNER	DEED RECORD		DEED AREA AC	TOTAL PRO AC	TOTAL TAKE AC	PRO IN TAKE AC	NET TAKE AC	RESIDUE AC	REMARKS	AS ACQUIRED	
		VOL.	PAGE								VOLUME	PAGE
1WD	HENRY T. GOSHE (Deceased)	295	160	36.21	1.212	0.138	0.069	0.069	36.072		412	679
2WD	HENRY T. GOSHE (Deceased)	24	992		1.212	0.160	0.091	0.069	35.912		412	703
3WD	IRVIN C. STEINMETZ	384	181	0.697	0.275	0.220	0.127	0.093	0.477		412	681
4WD	FLORENCE KASSING	32	29	39.303	0.946	0.140	0.068	0.072	39.163		412	705

PARCEL No.	DATE	REMARKS
2	1-27-87	PAR 2WD-Correct BEARING
3	10-30-86	PAR 3-AREA CORRECTION
1/2	7-17-86	Change DEED AREA

S.W 1/4, SEC. 27, JACKSON TWP T3N, R13E

LOCATION MAP

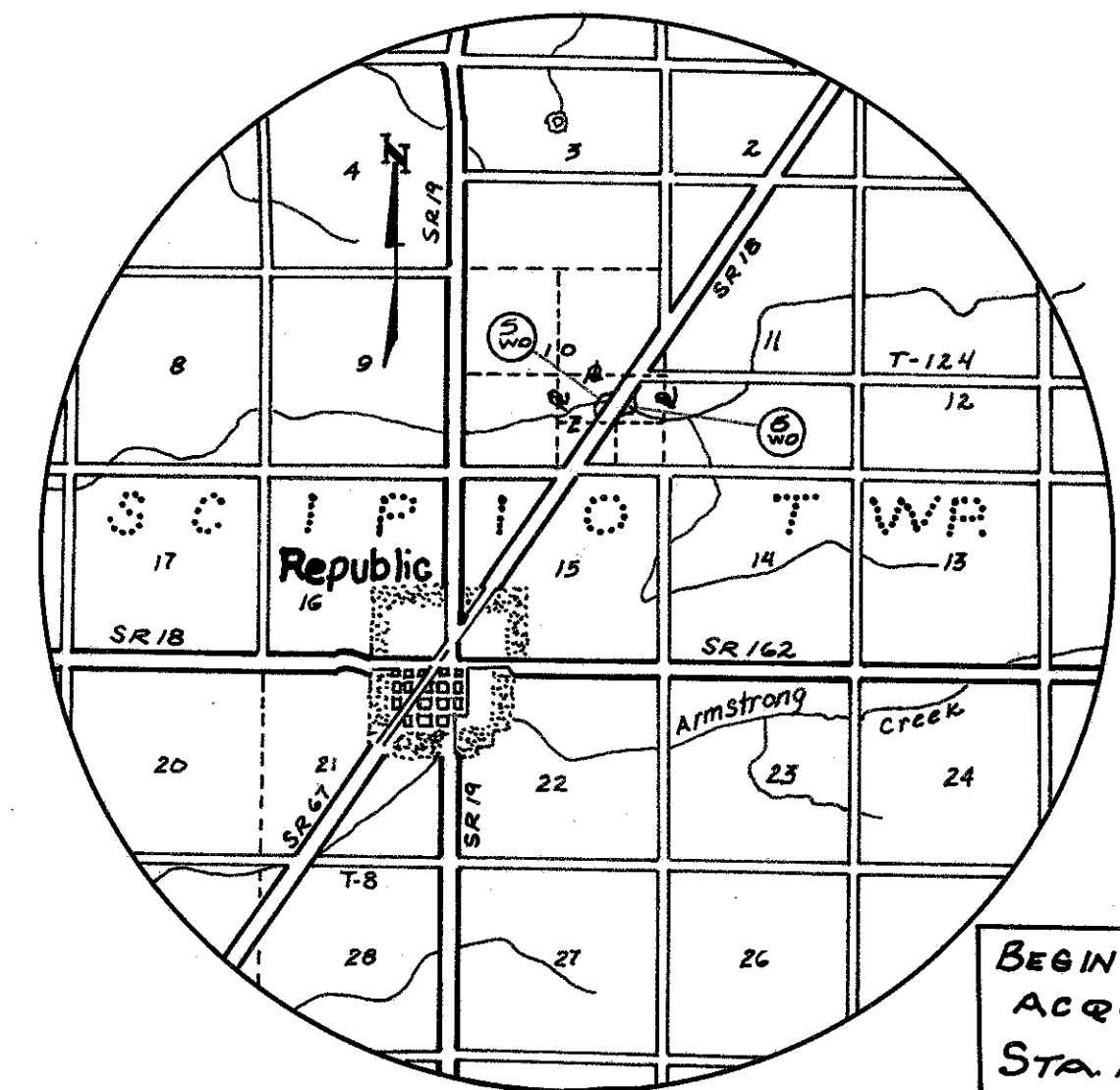
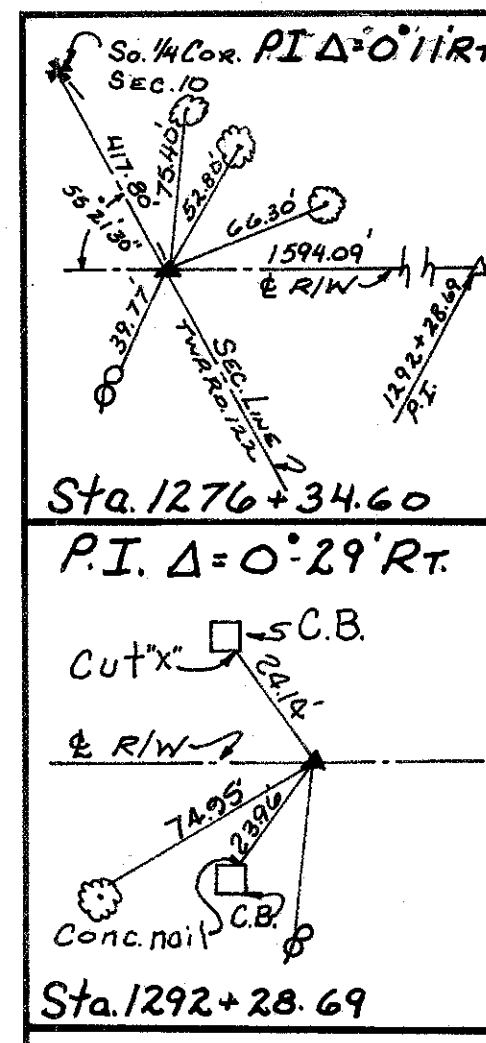
NE 1/4, S.E. 1/4, SEC. 10, T 2N, R 16E, SCIPIO TWP.



FHWA REGION	STATE	PROJECT
5	OHIO	

28
29
2
3

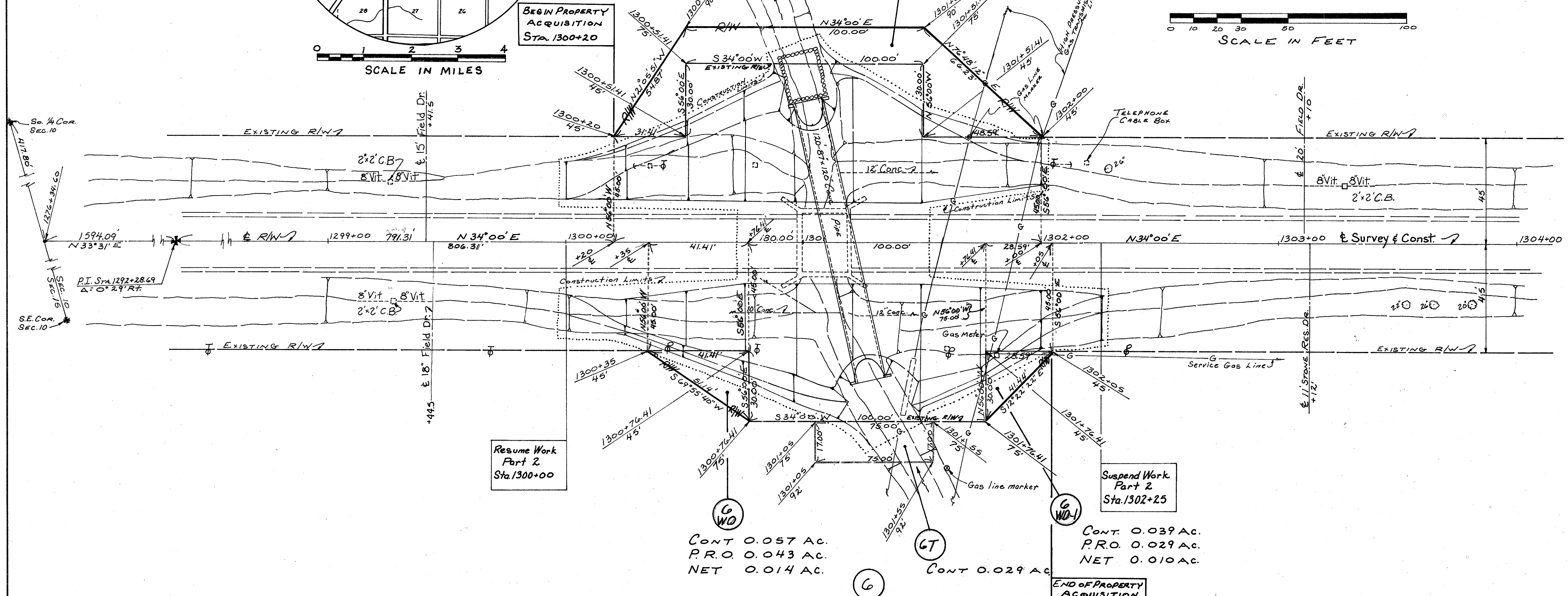
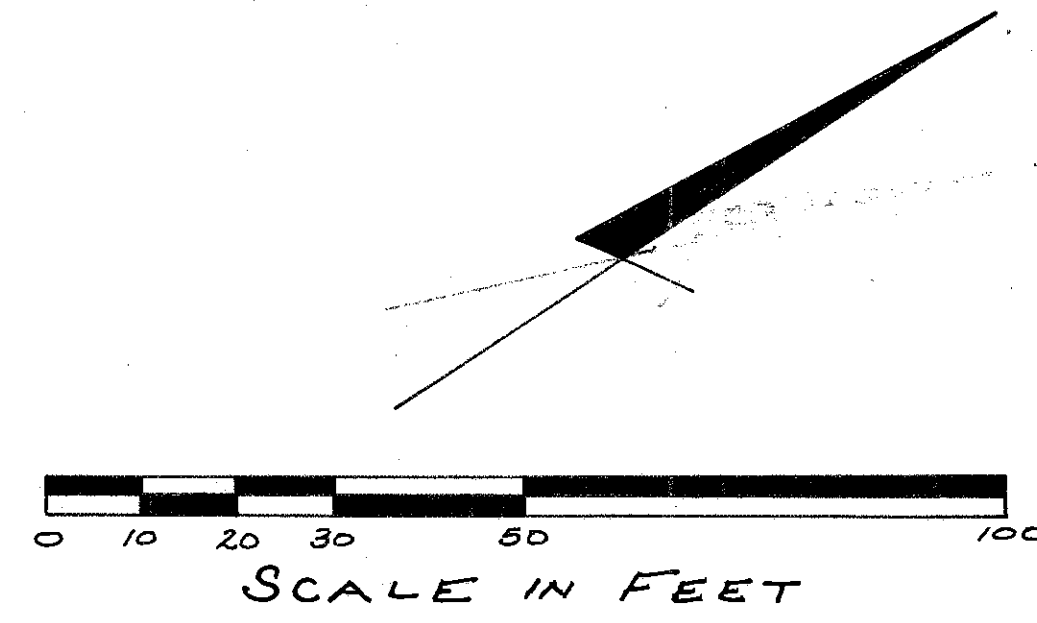
SEN 18-2464-PART 2
JOB No 625120



SCALE IN MILES

5
FLOYD A. & RITA A. MEYER
13.5 AC.
VOL. 356 PAGE 179

CONT 0.331 AC.
P.R.O. 0.255 AC.
NET 0.076 AC.



RIGHT OF WAY SUMMARY

Parcel Number	OWNERS	Deed Record		Deed Area Acres	Total PRO Acres	Total Take Acres	PRO Take Acres	Net Take Acres	Residue Acres	Remarks	AS ACQUIRED	
		Volume	Page								VOLUME	PAGE
5WD	FLOYD A. & RITA A. MEYER	356	179	12.5	1.653	0.331	0.255	0.076	12.169		411	825
6WD	HERBERT A. & MARIE H. DAMSCHRODER	354	1013	33.23	1.653	0.057	0.043	0.014			411	819
6WD-1	" " "					0.039	0.029	0.010	33.206		411	817
6T	" " "							0.029		GRADE SLOPES OF DITCH		

HERBERT A. & MARIE H. DAMSCHRODER
33.23 AC.
VOL. 354 PAGE 1011

NE 1/4, S.E. 1/4, SEC. 10, T. 2N, R. 16E, SCIPIO TWP.

MORRISON CREEK SEN 18-2464

Parcel Number	Date	Remarks
6WD	7-18-96	ADD VOL & PAGE NUMBER
5WD	7-18-96	CHANGE DEED AREA

