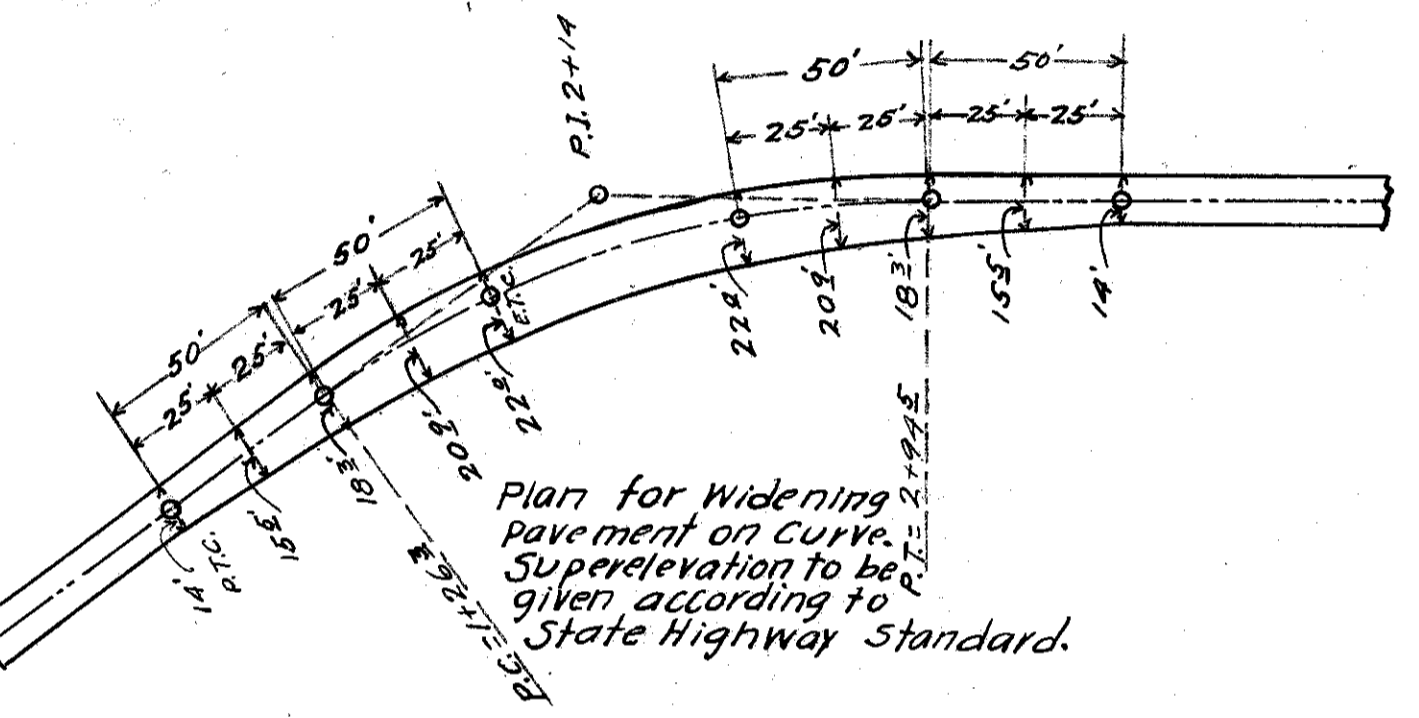
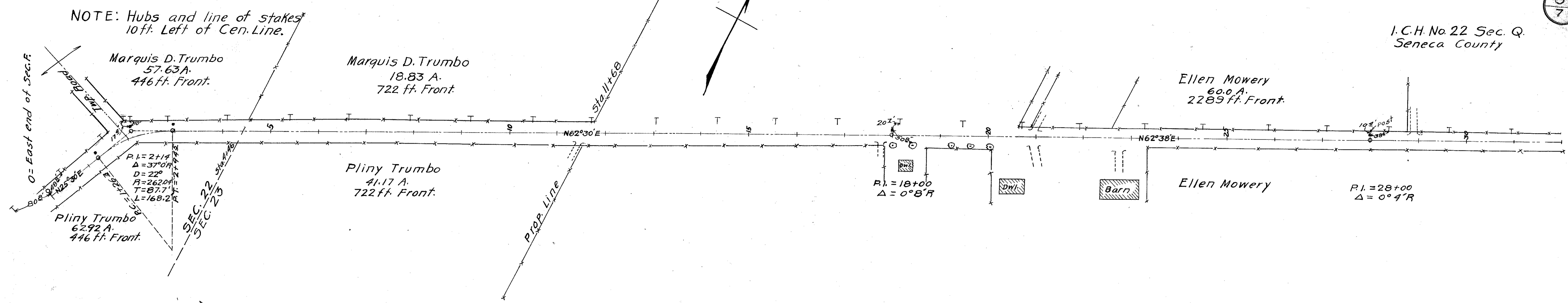


I.C.H. No 22 Sec. Q
Seneca County

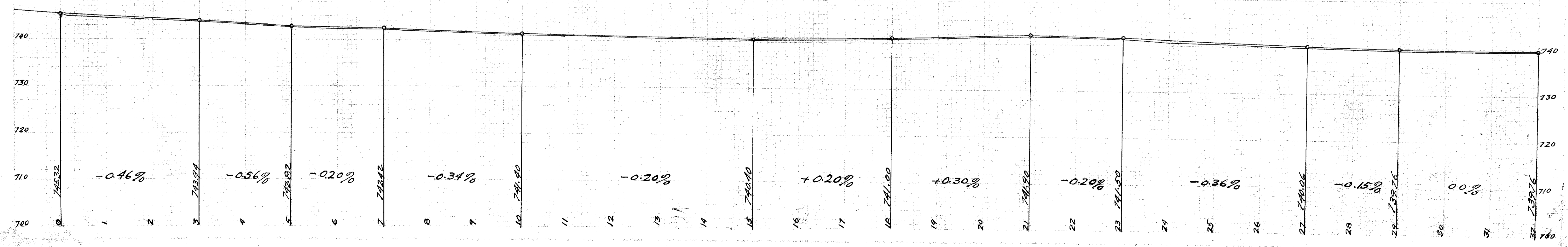


B.M. R.R. Spike in pole 231 Sta. 0+48
Elev. 745.73

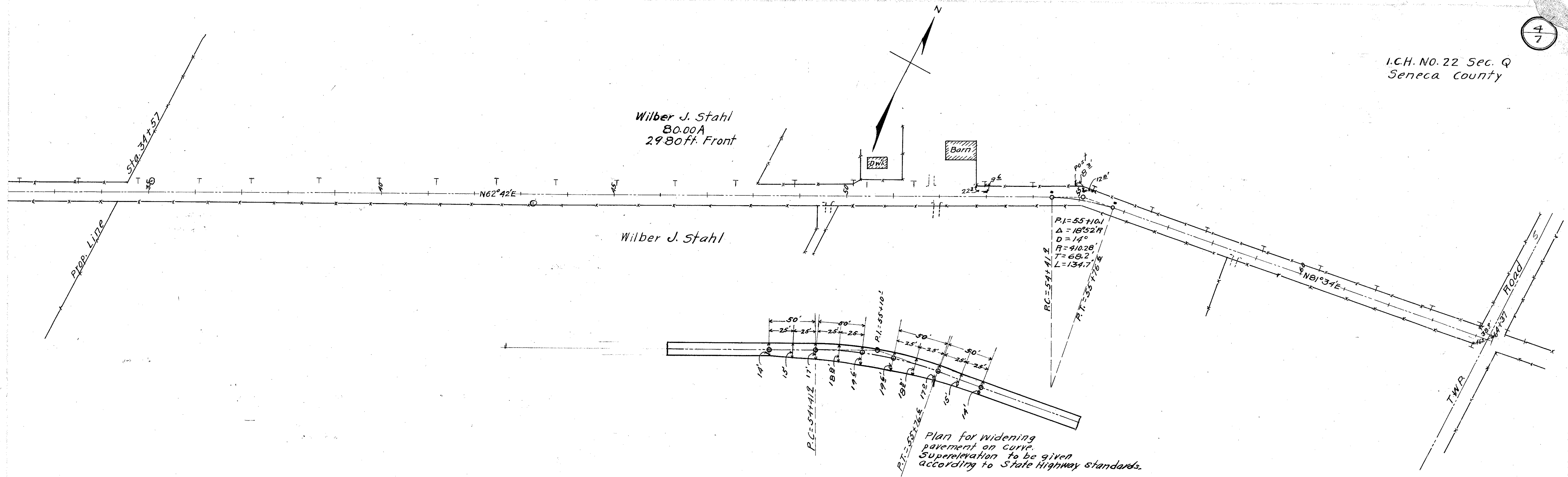
B.M. R.R. Spike in pole 221 Sta. 9+21
Elev. 741.28

B.M. R.R. Spike in pole 201 Sta. 20+69
Elev. 742.32

B.M. R.R. Spike in pole 191 Sta. 30+96
Elev. 739.85



I.C.H. NO. 22 Sec. Q
Seneca County



B.M. R.R. Spike in pole 194 Sta 41+19
Elev 738.99

B.M. R.R. Spike in pole 202 Sta 50+15
Elev 739.01

B.M. R.R. Spike in pole 174 Sta 62+91
Elev 737.31

