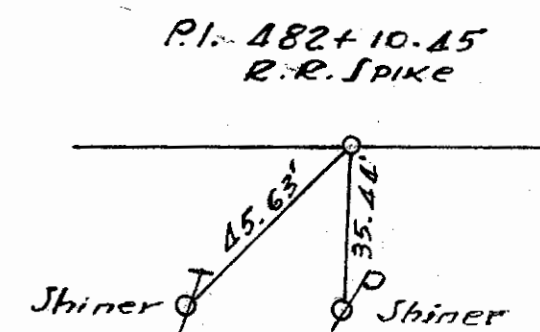


SEC. 17 LIBERTY TWP T. 3 N. R. 14 E.

FED. RD. DIVISION	STATE	PROJECT	TYPE FUNDS
2	OHIO		

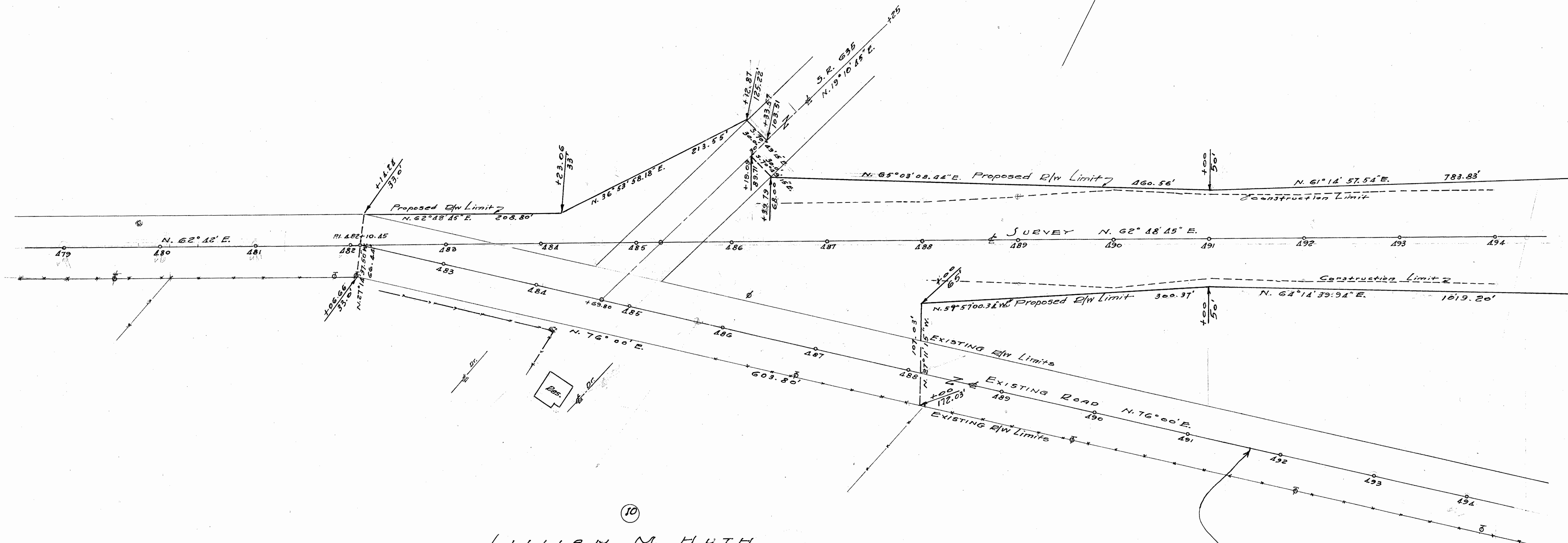
1/3

SENECA COUNTY
SEN-12-(9.09-9.45)



9

LILLIAN M. HUTH



10

LILLIAN M. HUTH

Reverted To County Highway System as per Director of Highways - J.E. 02-16-1968, and Vol. 53, Page 142.

PL012 48 6-43

FED. RD. DIVISION	STATE	PROJECT	TYPE FUNDS
2	OHIO		

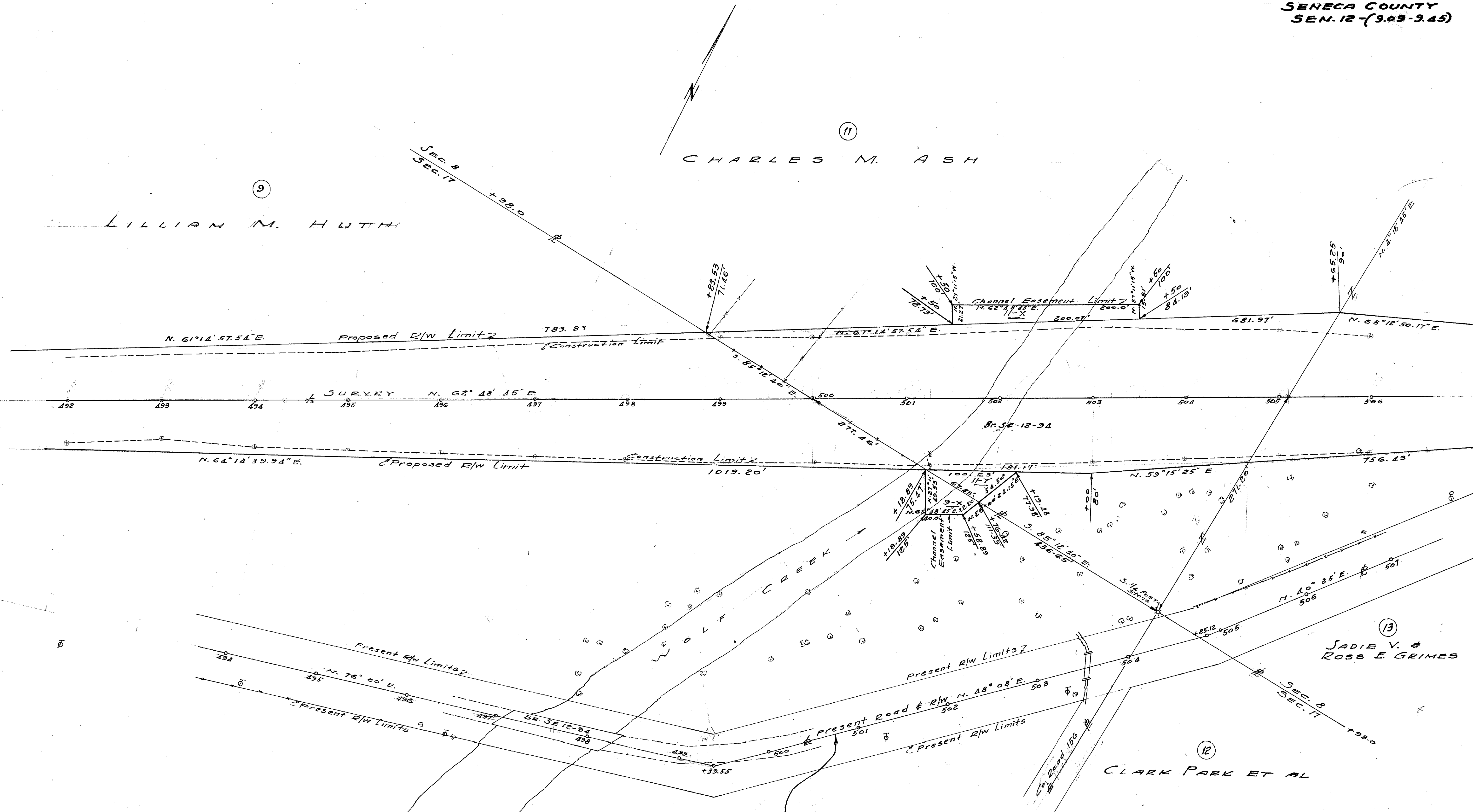
2
3

SENECA COUNTY
SEN. 12-(9.09-9.45)

Scanned
July 1967

CHARLES M. ASH

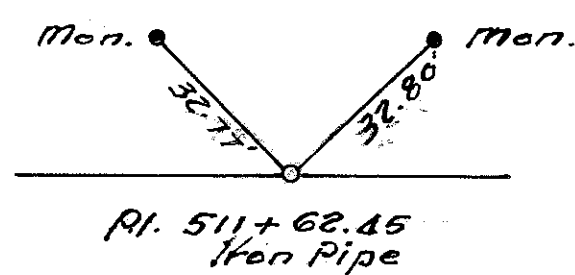
LILLIAN M. HUTH



Reverted To County Highway System as per Director of Highways - J.E. 02-16-1968, and Vol. 53, Page 142,

FED. RD. DIST. NO.	STATE	PROJECT	FISCAL YEAR
			3
			3

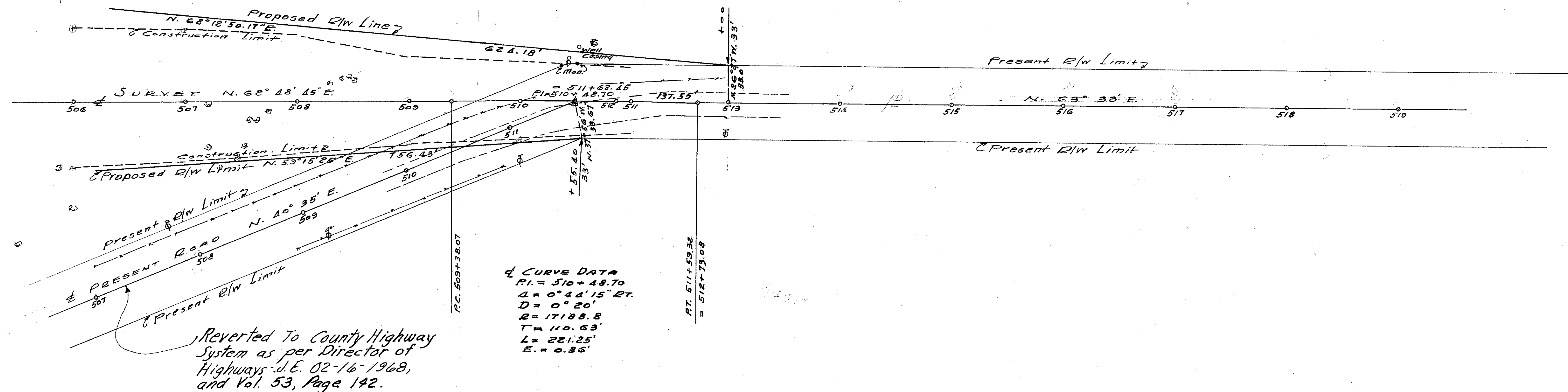
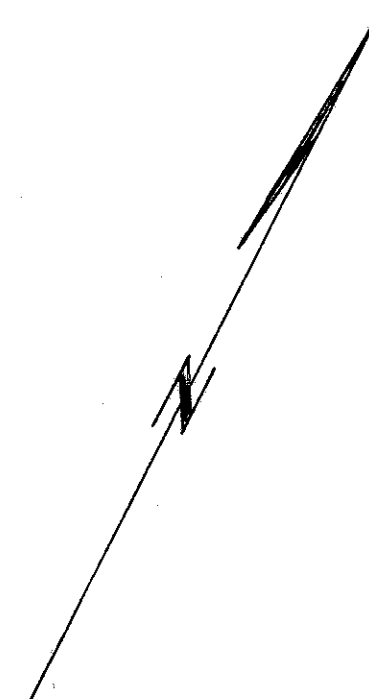
SENECA COUNTY
SEN-12-(9.09-9.49)



RI. 511+62.45
Iron Pipe

(11)

CHARLES M. ASH



4 CURVE DATA
 PI = 510+48.70
 Δ = 0° 44' 15\"/>

Reverted To County Highway System as per Director of Highways - J.E. 02-16-1968, and Vol. 53, Page 142.

(13)

SADIE V. & ROSS E. GRIMES

Scanned July 1997

0455 40 000 0 45