

#6015

STATE OF OHIO DEPARTMENT OF HIGHWAYS

S-1546(1)

| FED. RD. DIVISION | STATE | PROJECT | TYPE FUNDS |
|-------------------|-------|-----------|------------|
| 2 | OHIO | S-1546(1) | |

1/17

1967 SPECIFICATIONS

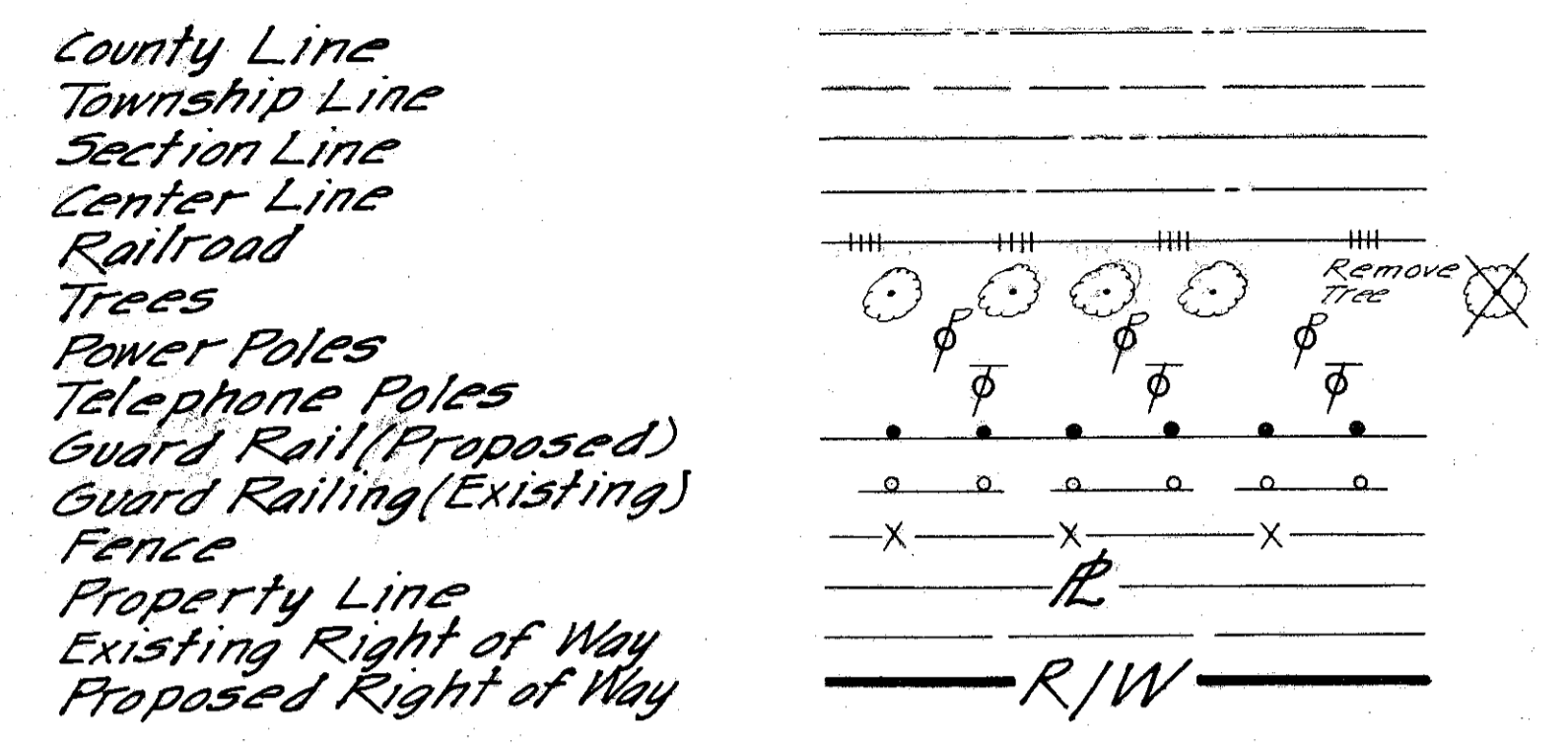
SEN. 12-12.64

The Standard Specifications of the State of Ohio, Department of Highways including changes and Supplemental Specifications listed in the proposal shall govern this improvement.

The right of way for this improvement will be provided by the State of Ohio.

I hereby approve these plans and declare that the making of this improvement will require the closing to traffic of the highway and that detours will be provided as shown hereon.

CONVENTIONAL SIGNS

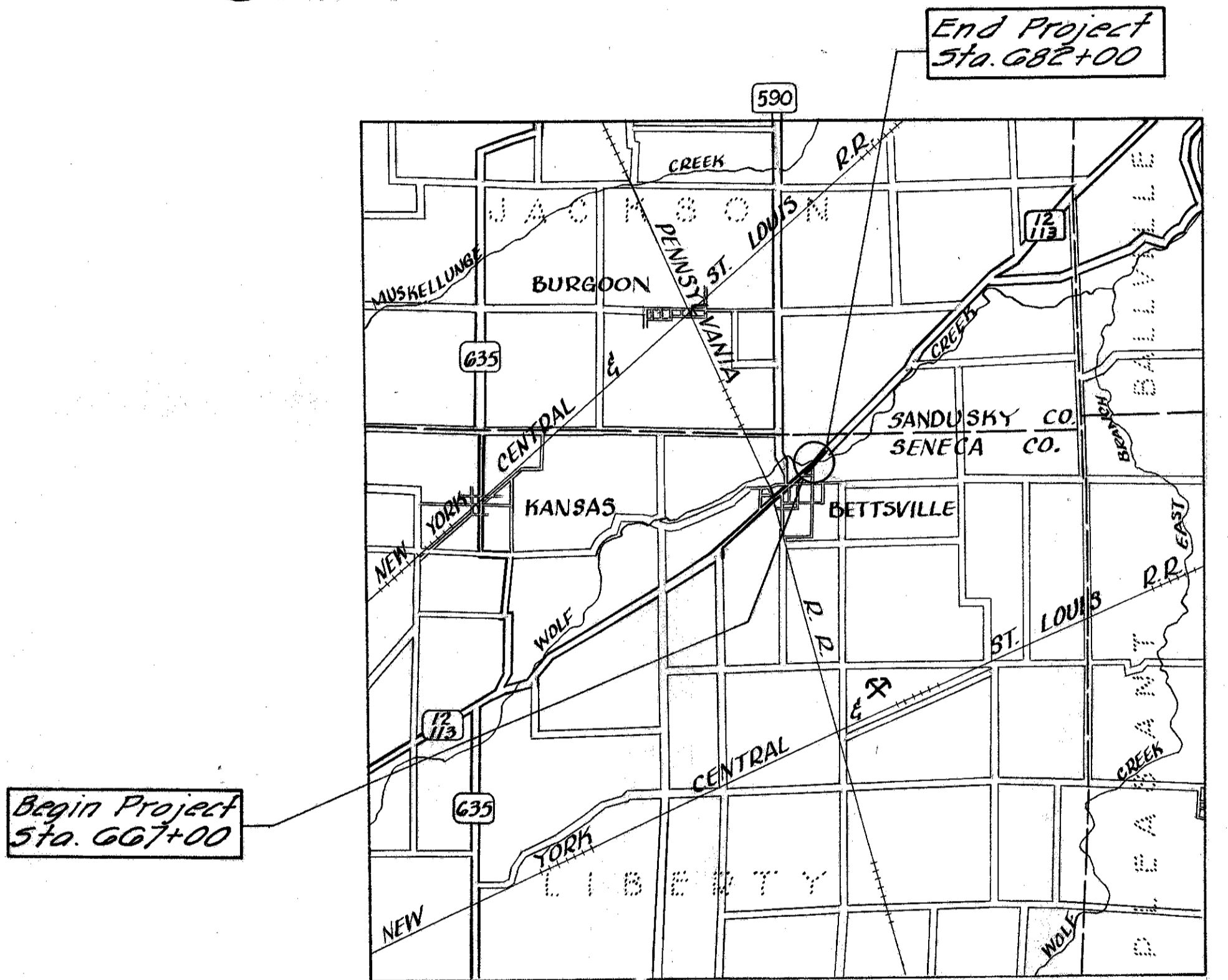


INDEX OF SHEETS

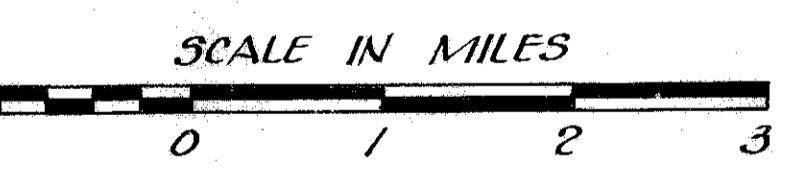
| | |
|---|-------|
| Title Sheet | 1 |
| Typical Sections | 2 |
| General Summary, General Notes & Calculations | 3 |
| Plan and Profile and Right-of-Way | 4-5 |
| Cross Sections | 6-11 |
| Structure over 20' Span (Sen 12-12.74) | 12-17 |
| Guard Rail Details | 11A |

Sheet 14 REV.
4-16-70 G.F.J.

SEN-12-12.64 VILLAGE OF BETTSVILLE LIBERTY TOWNSHIP SENECA COUNTY

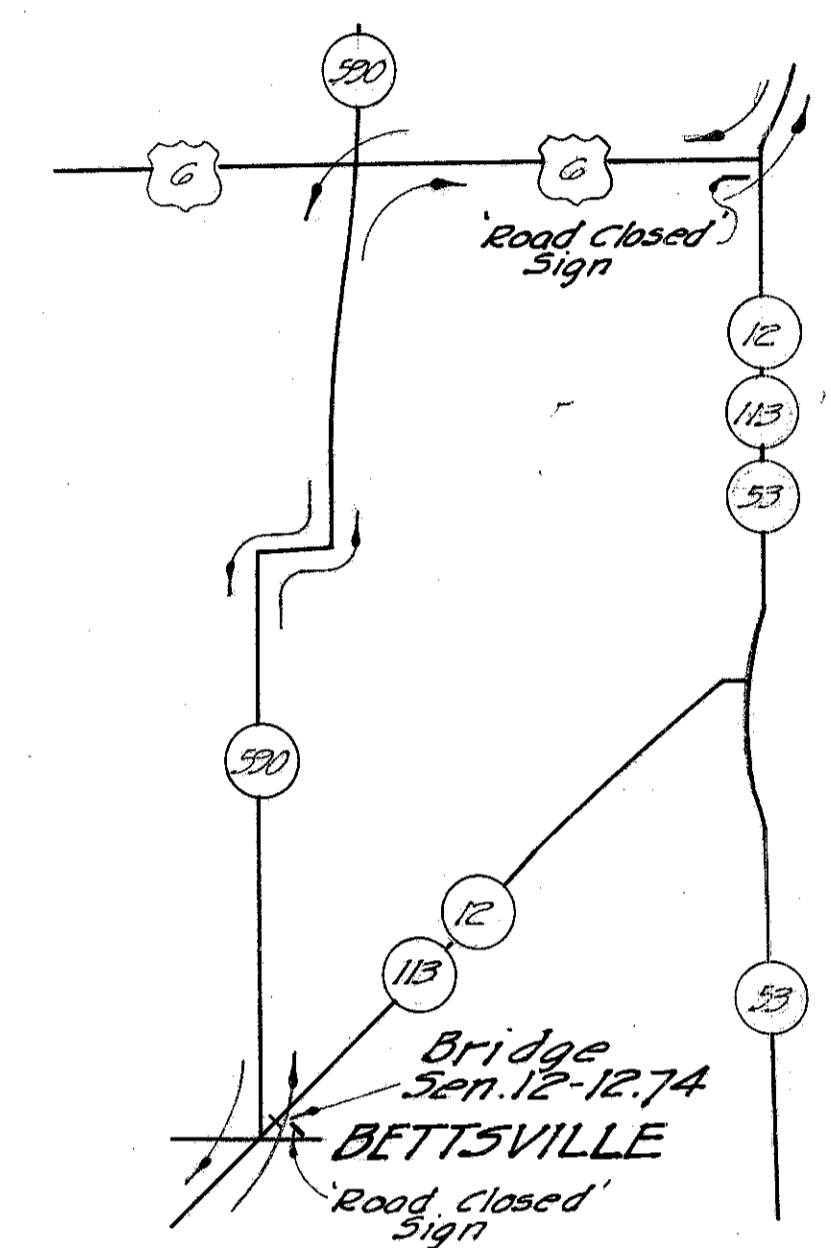
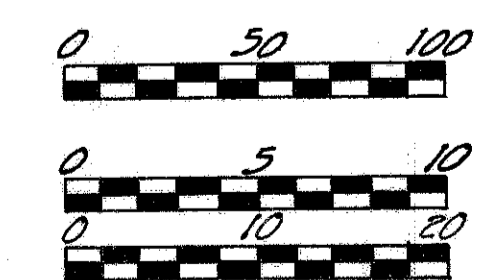


LOCATION MAP



Portion to be improved
State Roads
Other Roads

Plan
Profile (Horizontal)
Profile (Vertical)
Cross Sections (Road)
Channel Sections



DETOUR MAP

LINE DATA

| | |
|--|--------------|
| Begin Project | Sta. 667+00 |
| End Project | Sta. 682+00* |
| Net Length = 1499.73 Lin. Ft. or 0.284 Miles | |
| Begin Work | Sta. 666+50* |
| End Work | Sta. 682+00 |
| Net Length = 1549.73 Lin. Ft. or 0.293 Miles | |

* Station Equations: 680+48.23Bk = 680+48.30Ah
671+73.66Bk = 671+73.86Ah

DESIGN DESIGNATION

| | |
|------------------------------|-------|
| Current ADT, 1967 | 2750 |
| Design Year ADT, 1975 | 4435 |
| D.H.V. | 446 |
| D (Directional Distribution) | 50% |
| T (Percent B+C Trucks) | 8% |
| Y (Design Speed) | 50mph |

| STANDARD CONSTRUCTION DRAWINGS | | | |
|--------------------------------|---------|---------|---------|
| BP-5 | 6-1-65 | MC-1 | 10-1-67 |
| BPG | 6-1-65 | MC-3 | 5-1-66 |
| CB22A+B | 6-1-65 | MC-4 | 6-1-65 |
| CR-1 | 1-1-67 | AS-1.5A | 8-10-65 |
| CR-2A | 1-1-67 | RB-1.55 | 2-2-59 |
| SP-53 | 6-30-61 | SD-1.65 | 11-8-65 |

| SUPPLEMENTAL SPECIFICATIONS | |
|-----------------------------|---------|
| 808 | 1-13-67 |
| 811 | 1-1-67 |
| 825 | 1-1-67 |
| 828 | 1-1-67 |
| 1001 | 3-21-66 |

PLANS BY
SANZENBACHER, MILLER, BRIGHAM & SCOTT
TOLEDO OHIO

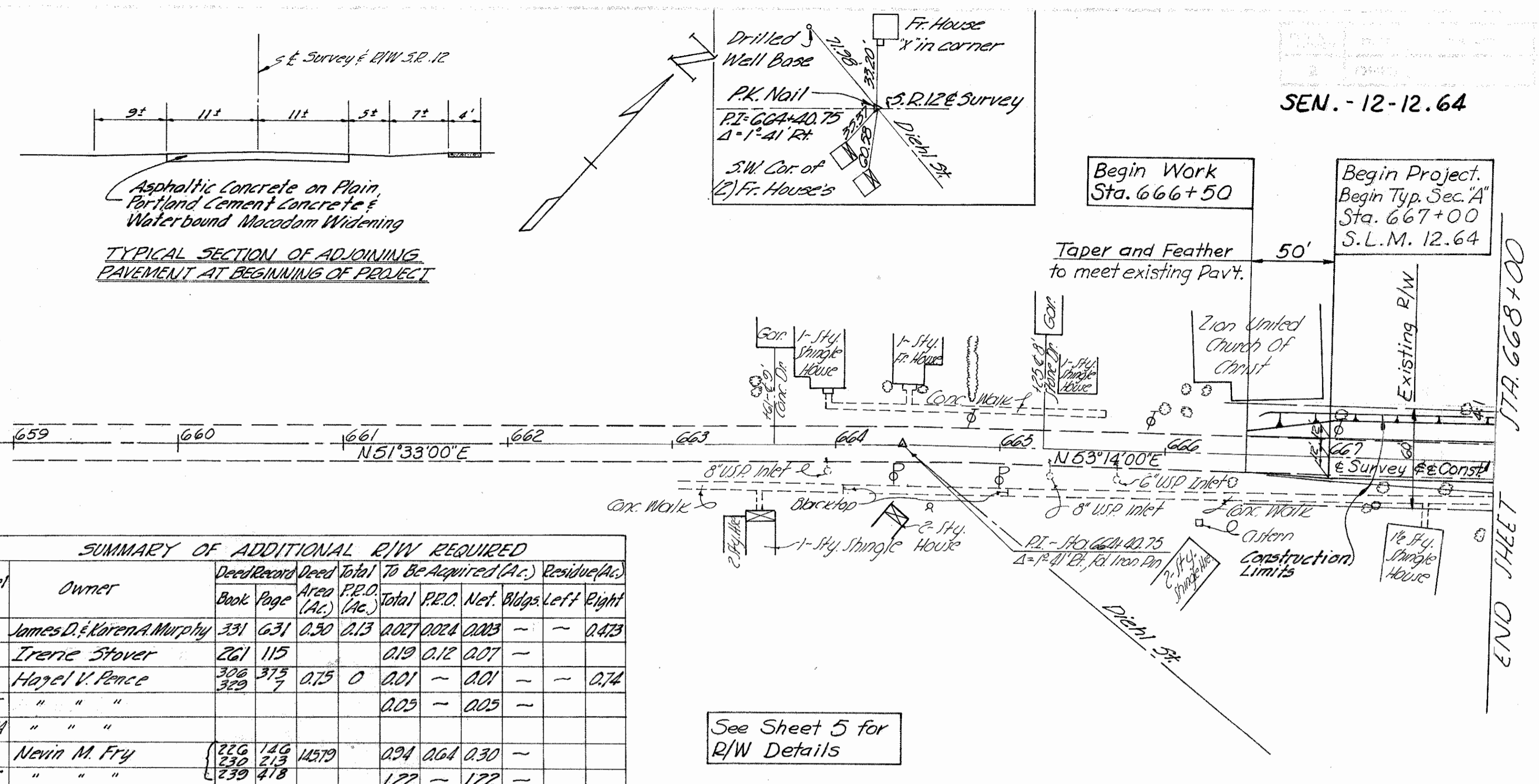
- Approved Date 2-24-67 Thomas M. Major, Division Deputy Director
- Approved Date 1-23-68 C. A. Alvarado, Engineer of Bridges
- Approved Date 1-23-68 R. E. Gathin, Engineer of Location and Design
- Approved Date 1-23-68 R. E. Gathin, Deputy Director of Design and Construction
- Approved Date 1-30-68 T. H. Brund, Deputy Director of Right of Way
- Approved Date 1-23-68 Thomas M. Major, Deputy Director of Planning and Programming
- Approved Date 1-30-68 S. W. Wilson, First Assistant Director
- Approved Date 1-30-68 P. E. Moshier, Director of Highways

DEPARTMENT OF TRANSPORTATION
FEDERAL HIGHWAY ADMINISTRATION
BUREAU OF PUBLIC ROADS

Approved _____ Date _____
Division Engineer

| | |
|-----------------|--------------|
| FILE NO. | SEN-12-12.64 |
| Date of Letting | 196 |
| Contract No. | |

| PAVEMENT & ROADWAY QUANTITIES | | | | | | | | | | | | | | | |
|-------------------------------|-----------|-----------|--|--------------------------------|----------------------------|--------------------------|-------------------|----------------------------|----------------------------|---------------------------------|------------------------------|--|---|------------------|------|
| Refer to | Station | Side | Quantities | | | | | | | | | | | | |
| | | | 202 Existing Sidewalk Removed & Disposed of | 203 Subgrade Preparation | 302 Asphalt Concrete | 304 Aggregate Base | 310 6" Subbase | 402 Asphalt Concrete | 404 Asphalt Concrete | 408 Bituminous Prime Coat | 606 Guard Rail, Type 4 | 611 Reinforced Concrete Approach Slab (7'-13') | 202 Existing Pavement Removal & Disposal | 407 Tack Coat | |
| | FROM | TO | Sq.Ft. | Sq.Yd. | Cu.Yd. | Cu.Yd. | Cu.Yd. | Cu.Yd. | Cu.Yd. | Gal. | Lin.Ft. | Sq.Yd. | Sq.Yd. | Gal. | |
| Typical Section "A" | 666+50 | 669+00 | ± | | 5.0 | 19.6 | 19.3 | 449 | 21.9 | 24.1 | | | | 61.5 | |
| Typical Section "B" | 669+00 | 671+94.82 | ± | | | | | | | | | | | | |
| Typical Section "C" | 674+85.18 | 682+00 | ± | 26224 | 2291 | 635.7 | 425.5 | 937 | 937 | 10994 | | | 1682 | | |
| 1-P | 669+00 | 670+37.29 | Rt. | | 261.1 | 22.0 | 59.6 | 49.5 | 11.9 | 103.4 | | | | | |
| 2-P | 671+89 | | Rt. | | | | 12.2 | | | 5.0 | | | | | |
| 3-P | 671+94.82 | 672+19.82 | ± | | 647 | | | 11.2 | | | | | 66.7 | | |
| 4-P | 674+60.18 | 674+85.18 | ± | | 647 | | | 11.2 | | | | | 66.7 | | |
| 5-P | 677+72 | | Lt. | | | | 17.1 | | | 7.0 | 49 | | | | |
| 6-P | 679+81 | | Rt. | | | | 29.7 | | | | | | | | |
| 7-P | 681+17 | | Lt. | | | | 11.7 | | | | | | | | |
| 8-P | 677+50 | 677+66 | Lt. | | | | 3.5 | | | 1.4 | 10 | | | | |
| 1-R | 669+17 | 669+62 | Rt. | 180 | | | | | | | | | | | |
| 2-R | 669+20 | 671+97.82 | Lt. | | | | | | | | 37670 | | | | |
| 3-R | 672+08.28 | 672+41.82 | Rt. | | | | | | | | 3294 | | | | |
| 4-R | 674+38.18 | 677+46 | Lt. | | | | | | | | 30794 | | | | |
| 5-R | 674+82.18 | 678+72 | Rt. | | | | | | | | 38920 | | | | |
| Totals | | | | 180 | 30829 | 256.1 | 789.1 | 582.7 | 150.1 | 140.9 | 12879 | 110678 | 133.4 | 1682 | 61.5 |



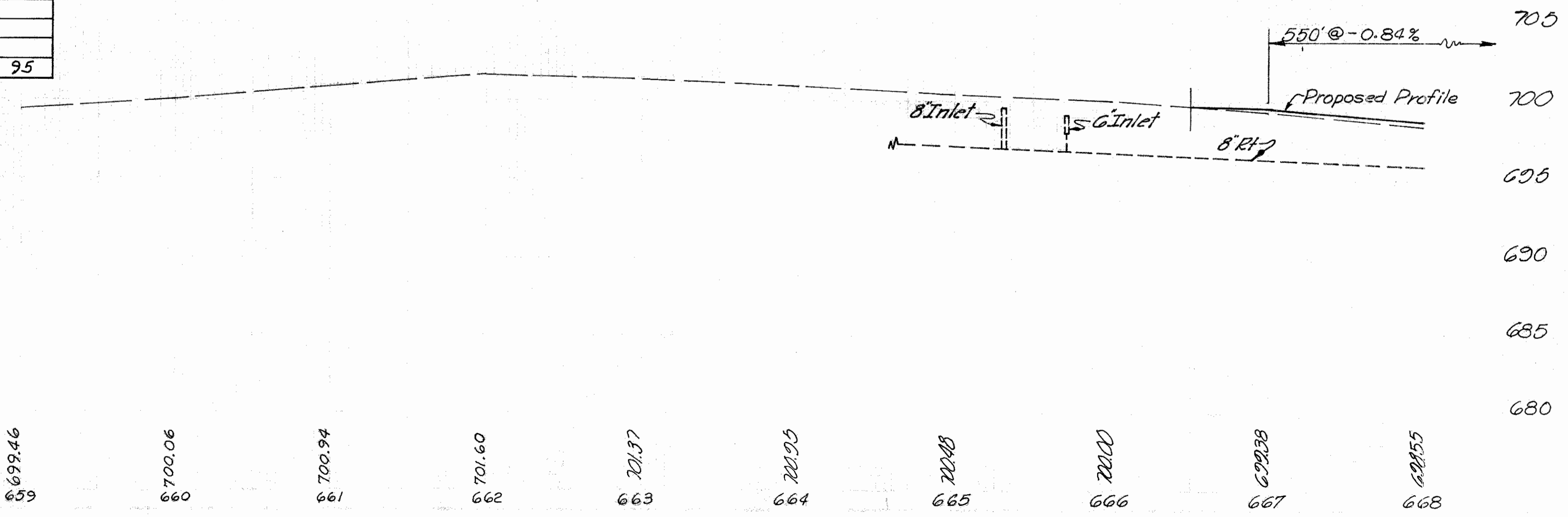
| SUMMARY OF ADDITIONAL R/W REQUIRED | | | | | | | | | | | |
|------------------------------------|----------------------------|-------------|------|------------|--------------|----------------------|--------|-------|---------------|------|-------|
| Parcel No. | Owner | Deed Record | | Area (Ac.) | P.R.O. (Ac.) | To Be Acquired (Ac.) | | | Residue (Ac.) | | |
| | | Book | Page | | | Total | P.R.O. | Net | Bligs | Left | Right |
| 6 | James D. & Koren A. Murphy | 331 | 631 | 0.30 | 0.13 | 0.027 | 0.028 | 0.025 | - | - | 0.473 |
| 7 | Irene Stover | 261 | 115 | | | 0.19 | 0.12 | 0.07 | - | - | |
| 8 | Hazel V. Pence | 308 | 375 | 0.75 | 0 | 0.01 | - | 0.01 | - | - | 0.74 |
| 8-T | " | | | | | | | 0.025 | - | - | |
| 8-WA | " | | | | | | | | | | |
| 9 | Nevin M. Fry | 226 | 146 | 14.79 | | 0.94 | 0.64 | 0.30 | - | - | |
| 9-T | " | 230 | 213 | | | 1.22 | - | 1.22 | - | - | |
| 9-WA | " | 239 | 418 | | | | | | | | |
| 10 | " | | | | | 0.21 | 0.14 | 0.07 | - | - | |
| 10T | " | | | | | 0.35 | - | 0.35 | - | - | |
| 7-T | Irene Stover | | | | | 0.02 | - | 0.02 | - | - | |

| DRAINAGE QUANTITIES | | | | | | | | | | | | | | | | | |
|---------------------|---------|--------|---|---|----------------------------|--|---|-------------------------------|-------------------------------|-------------------------------|---------------------------------|-------------------------------|---|-------------------------------|----------|------|----|
| Reference No. | Station | Side | Quantities | | | | | | | | | | | | | | |
| | | | 202 Catch Basins and/or Pipe Removed | 202 15" Under Drowned Rock Channel with 12" x 12" manhole | 601 Concrete Masonry | 602 Conduit, Type B With Class B Bedding | 603 12" Conduit Type C With Class B Bedding | 603 12" Conduit, Type D | 603 12" Conduit, Type E | 603 12" Conduit, Type F | 604 No. 2-2-B Catch Basin | 603 12" Conduit, Type G | 202 Removal of Exist. Structures | 603 12" Conduit, Type H | | | |
| | From | To | Each | Lin. Ft. | Cu. Yd. | Cu. Yd. | Lin. Ft. | Lin. Ft. | Lin. Ft. | Lin. Ft. | Lin. Ft. | Each | Lin. Ft. | Lump | Lin. Ft. | | |
| 1-D | 669+00 | 669+40 | Rt. | 1 | | | | 44 | | | | *1 | | | | | |
| 2-D | 669+40 | 670+25 | Rt. | | | | 20 | 86 | | | | *1 | | | | | |
| 3-D | 670+25 | 671+60 | Rt. | 1 | | | | 134 | | | | | 12 | *1 | | | |
| 4-D | 671+60 | 672+65 | Rt. | 1 | | | | | | 10 | | | | | 95 | | |
| 5-D | 676+64 | | Lt. | | | 5.2 | | | | 72 | | | | | Lump | | |
| 6-D | 677+48 | 678+00 | Lt. | 1 | 36 | | | 46 | 6 | | | | | | | | |
| 7-D | 670+64 | 674+05 | Lt. | | | 265 | | | | | | | | | | | |
| 8-D | 671+70 | 676+64 | Lt. | | | 440 | | | | | | | | | | | |
| 9-D | 671+50 | 677+50 | Lt. | | | 810 | | | | | | | | | | | |
| Total | | | | 4 | 36 | 1515 | 5.2 | 20 | 130 | 134 | 46 | 16 | 72 | *1 | *1 | Lump | 95 |

*For Information Only. Not Carried to General Summary.
 †A level course of Class C Portland Cement Concrete shall be placed at the bottom of the 12" pipe. The thickness of the concrete at the center shall be 3 inches. Payment for furnishing and placing said concrete shall be included in the unit price bid for item 603-72 Conduit, Type A with Class B Bedding, as per plan, 706.02.

SECTION 3 T3N R14E VILLAGE OF BETTSVILLE SENECA CO.

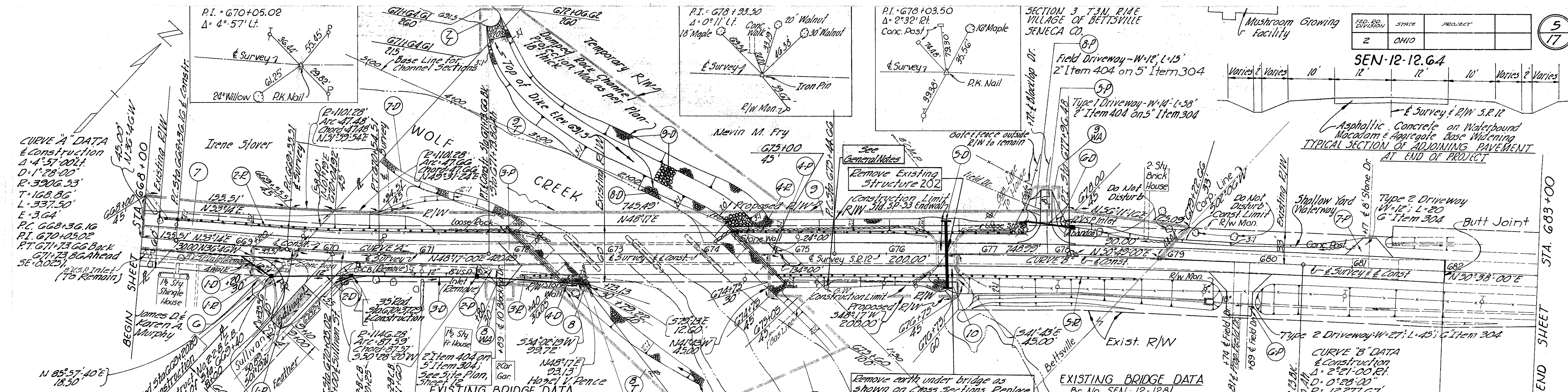
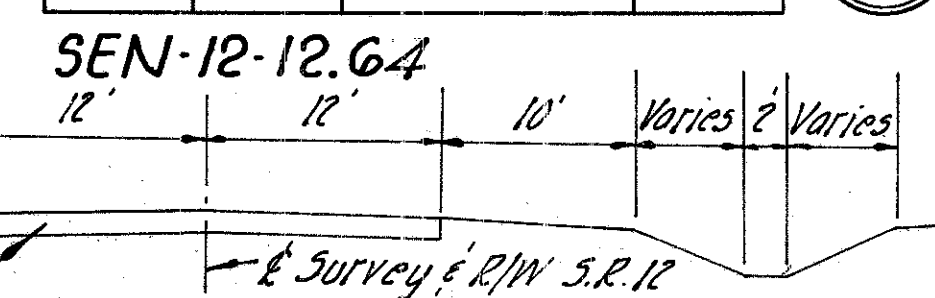
| Rt. Edge & Const. Lt. Edge Elev. | Part. Elev. Elev. |
|----------------------------------|-------------------|
| 699.43 | 699.62 |
| 699.23 | 699.41 |
| 699.05 | 699.20 |
| 698.91 | 698.99 |
| 698.81 | 698.78 |



12-15-63
 HDP
 Checked THD

| SEQ. NO. | DIVISION | STATE | PROJECT |
|----------|----------|-------|---------|
| 2 | | OHIO | |

5
17



CURVE DATA
 & Survey
 $\Delta = 4^\circ 57' 00''$ Lt.
 $D = 5^\circ 00'$ (Chord Def.)
 $R = 1146.28'$
 $T = 42.51'$
 $L = 29.00'$
 $E = 1.08'$

SECTION 3 T3 N, R14 E
 LIBERTY TWP SENECA CO.
 VILLAGE OF BETTSVILLE
 SENECA COUNTY

B.M. No. 5 Sta. G70+59
 Spk. in Power Pole 14' Lt.
 Elev. = 695.60

EXISTING BRIDGE DATA
 Br. No. SEN-12-1274
 Sta. G73+42
 Type: Conc. Girder with Conc. Slab & Conc. Substructure.
 Span: 2 @ 58'-8"
 Roadway: 19'-4"
 Wearing Surface: 3" Conc. & 5" Bit. Material
 Alignment: Tangent
 Skew: 45° R.F.
 Condition: Poor
 (For Br. Sen 12-1281 See Right)

B.M. No. 6 Sta. G73+42
 P.K. Nail in Center Pavt.
 Elev. = 693.95

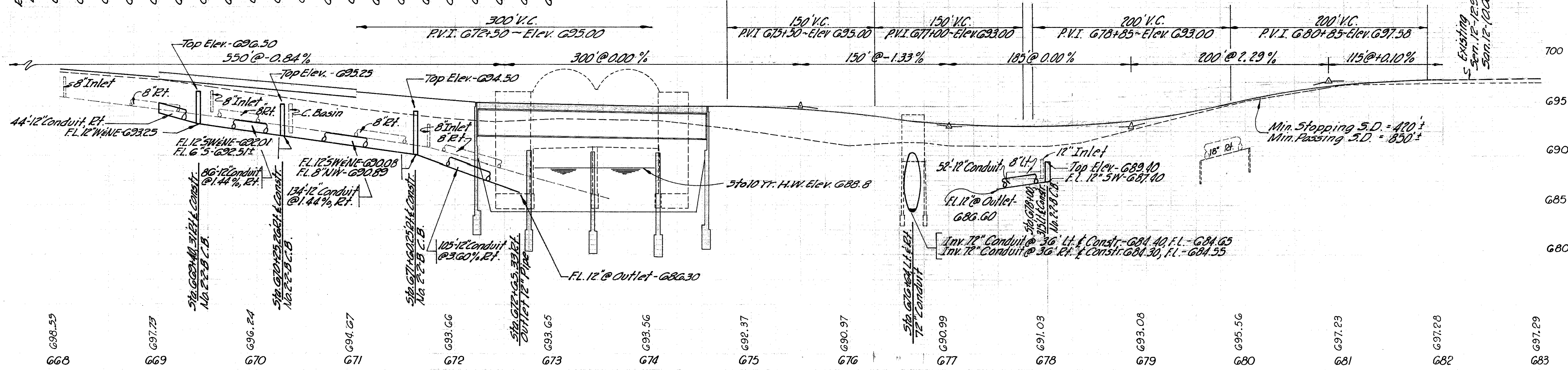
See Sheet 4 for Summary of Additional R/W Required

B.M. No. 7 Sta. G77+43
 "X" on N.E. corner Conc. Post
 42' Lt. Elev. = 694.16

B.M. No. 8 Sta. G82+41
 Spk. in Telephone Pole 31' Lt.
 Elev. = 695.27

SECTION 3 T3 N, R14 E
 LIBERTY TWP SENECA CO.

| | | | | | | | | | | | | | | | | | | | | | | | | | | | | | | | | | | | | | | | | | | | | | | | | | | | | | | | |
|--------|--------|--------|--------|--------|--------|--------|--------|--------|--------|--------|--------|--------|--------|--------|--------|--------|--------|--------|--------|--------|--------|--------|--------|--------|--------|--------|--------|--------|--------|--------|--------|--------|--------|--------|--------|--------|--------|--------|--------|--------|--------|--------|--------|--------|--------|--------|--------|--------|--------|--------|--------|--------|--------|--------|--------|
| 698.81 | 698.78 | 698.59 | 698.59 | 698.17 | 697.96 | 697.75 | 697.54 | 697.33 | 697.12 | 696.91 | 696.70 | 696.49 | 696.28 | 696.07 | 695.87 | 695.69 | 695.52 | 695.37 | 695.24 | 695.13 | 695.03 | 694.95 | 694.85 | 694.80 | 694.75 | 694.56 | 694.30 | 694.00 | 693.70 | 693.44 | 693.25 | 693.11 | 693.03 | 693.00 | 693.01 | 693.09 | 693.24 | 693.46 | 693.57 | 693.75 | 694.13 | 694.56 | 695.07 | 695.29 | 695.62 | 696.12 | 696.55 | 696.91 | 697.05 | 697.19 | 697.42 | 697.57 | 697.66 | 697.68 | 697.70 |
|--------|--------|--------|--------|--------|--------|--------|--------|--------|--------|--------|--------|--------|--------|--------|--------|--------|--------|--------|--------|--------|--------|--------|--------|--------|--------|--------|--------|--------|--------|--------|--------|--------|--------|--------|--------|--------|--------|--------|--------|--------|--------|--------|--------|--------|--------|--------|--------|--------|--------|--------|--------|--------|--------|--------|--------|



Sta. G68+00 to Sta. G83+00