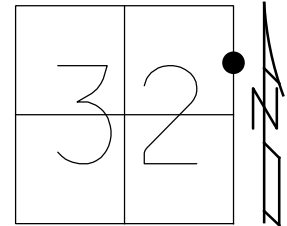


O.D.O.T. DISTRICT 2 SURVEY OFFICE (USE ONLY)

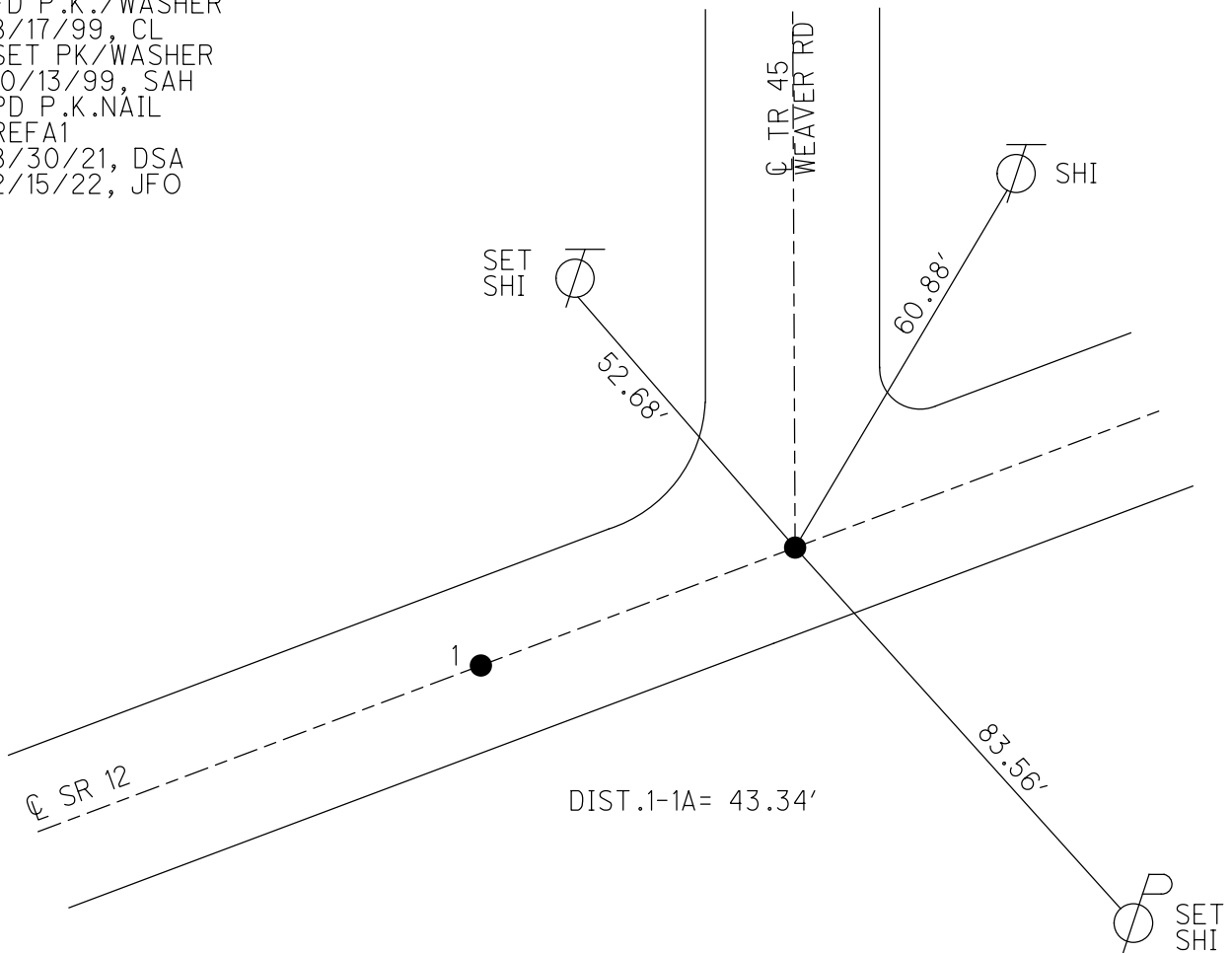
PERSONNEL \_\_\_\_\_ REFERENCE NO. 1 A SHEET 3 OF 70  
 NOTES NIESE DATE 8/31/21 ROUTE SR 12  
 H.C. AUBLE WEATHER SUNNY COUNTY SENECA  
 R.C. NIESE TEMP. 76° TOWNSHIP JACKSON  
 DWG BY RHOADES PID PVTRAIN SECTION 32  
 T 3 N R 13 E

TYPE MONUMENT P.K.NAIL  
 ON SURFACE - BELOW ON  
 OFFSET  $\odot$  PAVEMENT ON LT : RT  
12.3' TO RT EDGE PAVEMENT  
 STATION: 166+00



HORIZ.DATUM: NAD83 2011 GEOID: NAVD88 2018  
 GRID: NORTHING: 550825.298 EASTING: 1725864.039

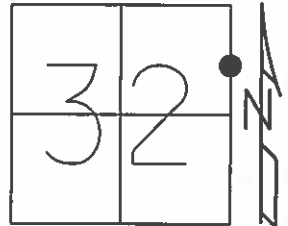
RECORD:  
 FD P.K./WASHER  
 8/17/99, CL  
 SET PK/WASHER  
 10/13/99, SAH  
 PD P.K.NAIL  
 REFA1  
 8/30/21, DSA  
 2/15/22, JFO



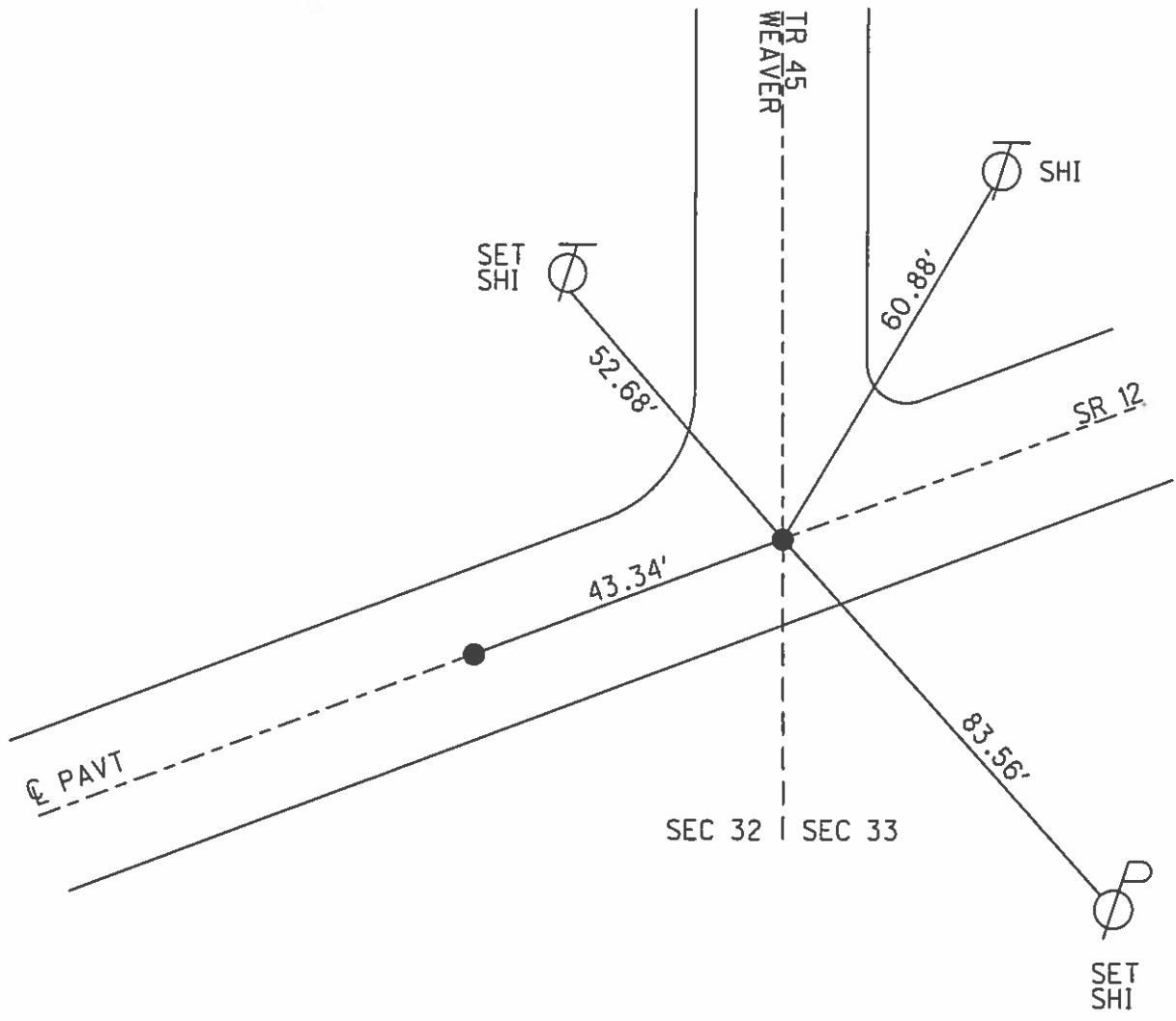
O.D.O.T. DISTRICT 2 SURVEY OFFICE (USE ONLY)

PERSONNEL \_\_\_\_\_ REFERENCE NO. 1-A SHEET 3 OF 70  
 NOTES LOEHRKE DATE 08-17-99 ROUTE SR 12  
 H.C. VAN DUSEN WEATHER FAIR COUNTY SENECA  
 R.C. ROUSOS TEMP. 72° TOWNSHIP JACKSON  
 \_\_\_\_\_ SECTION 32  
 \_\_\_\_\_ T 3 N R 13 E

TYPE MONUMENT \_\_\_\_\_ PK/WASHER \_\_\_\_\_  
 ON SURFACE - BELOW \_\_\_\_\_ ON \_\_\_\_\_  
 LEFT - Q PAV'T - RIGHT \_\_\_\_\_ ON \_\_\_\_\_  
12.3' TO RT EDGE PAVEMENT  
 S.L.M. \_\_\_\_\_ 166+00  
 GRID: NORTHING: \_\_\_\_\_ EASTING: \_\_\_\_\_



10-13-99 SET PK/W, SAH



# O.D.O.T. DISTRICT 2 SURVEY OFFICE

PERSONNEL \_\_\_\_\_

REFERENCE NO. 1 & 1-A

SHEET 1 OF 52

NOTES Loehrke

H.C. Van Dusen

R.C. Rousos

DATE 8-17-99

WEATHER FAIR

TEMP. +72

ROUTE SR 12

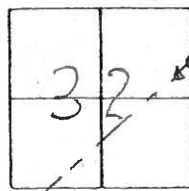
COUNTY Seneca

TOWNSHIP Jackson

SECTION 32

T. 3 N. R. 13 E.

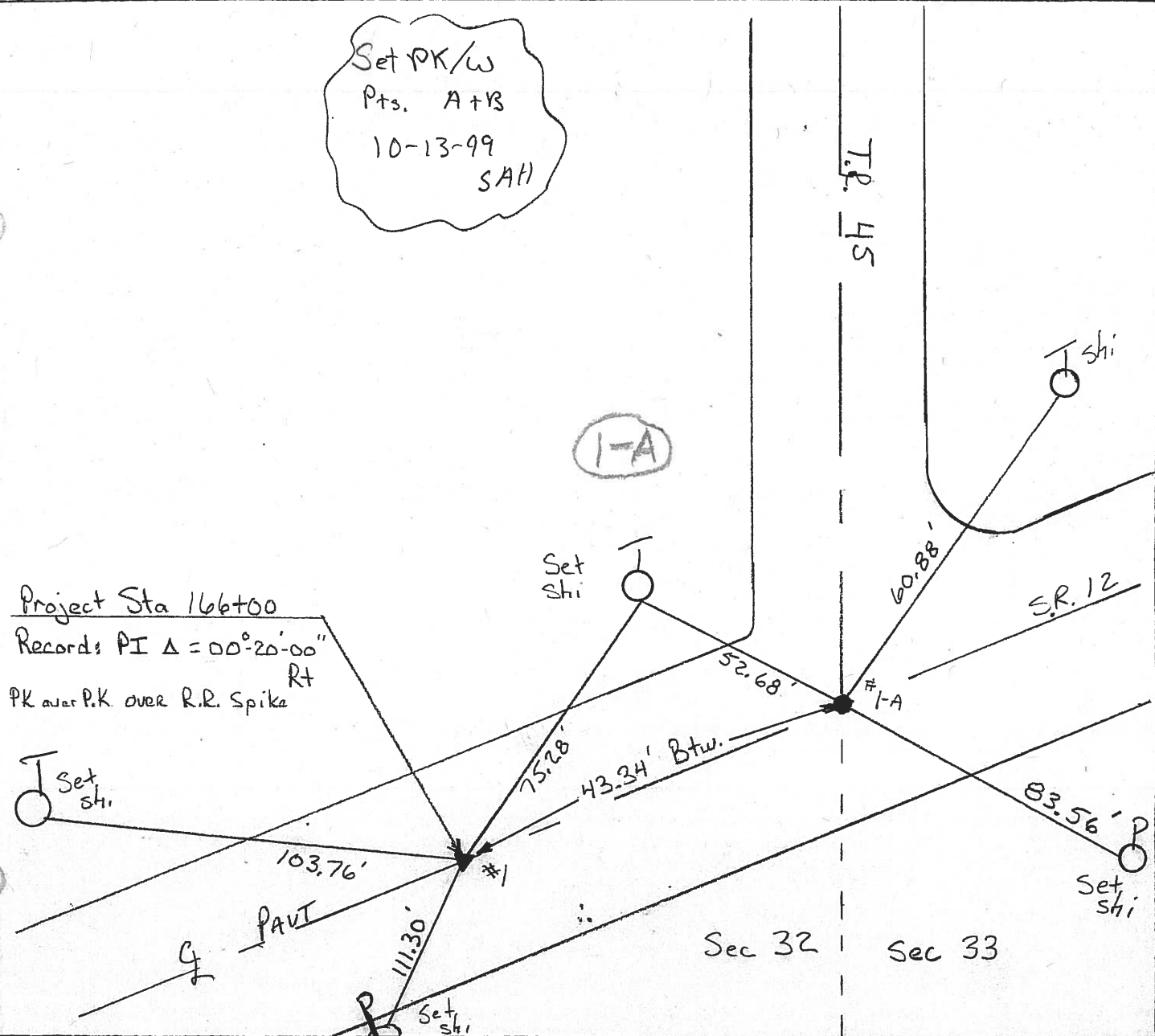
TYPE MONUMENT P.K. & WASHER  
 ON SURFACE - ~~BELOW~~ Yes  
~~LEFT - & PAV'T. - RIGHT~~ Yes  
12.3 TO Rt EDGE PAVEMENT  
S.L.M. Pt #1 Sta 166400



Set PK/W  
 Pts. A+B  
 10-13-99  
 SAH

1-A

Project Sta 166400  
 Records PI  $\Delta = 00^{\circ}20'00''$   
 Rt  
 PK over P.K. over R.R. Spike



Resurveyed 2000

### O.D.O.T. DISTRICT 2 SURVEY OFFICE

PERSONNEL

NOTES Cronin

H.C. Ripple

R.C. Geyman

Barbour

REFERENCE NO. 1 E 1 A

Drawn 1/22/87

DATE 1/09/87

WEATHER overcast

TEMP. 27°

SHEET 1 OF       

ROUTE # 12

COUNTY Seneca

TOWNSHIP Jackson

SECTION 32

T 3 N R 13 E

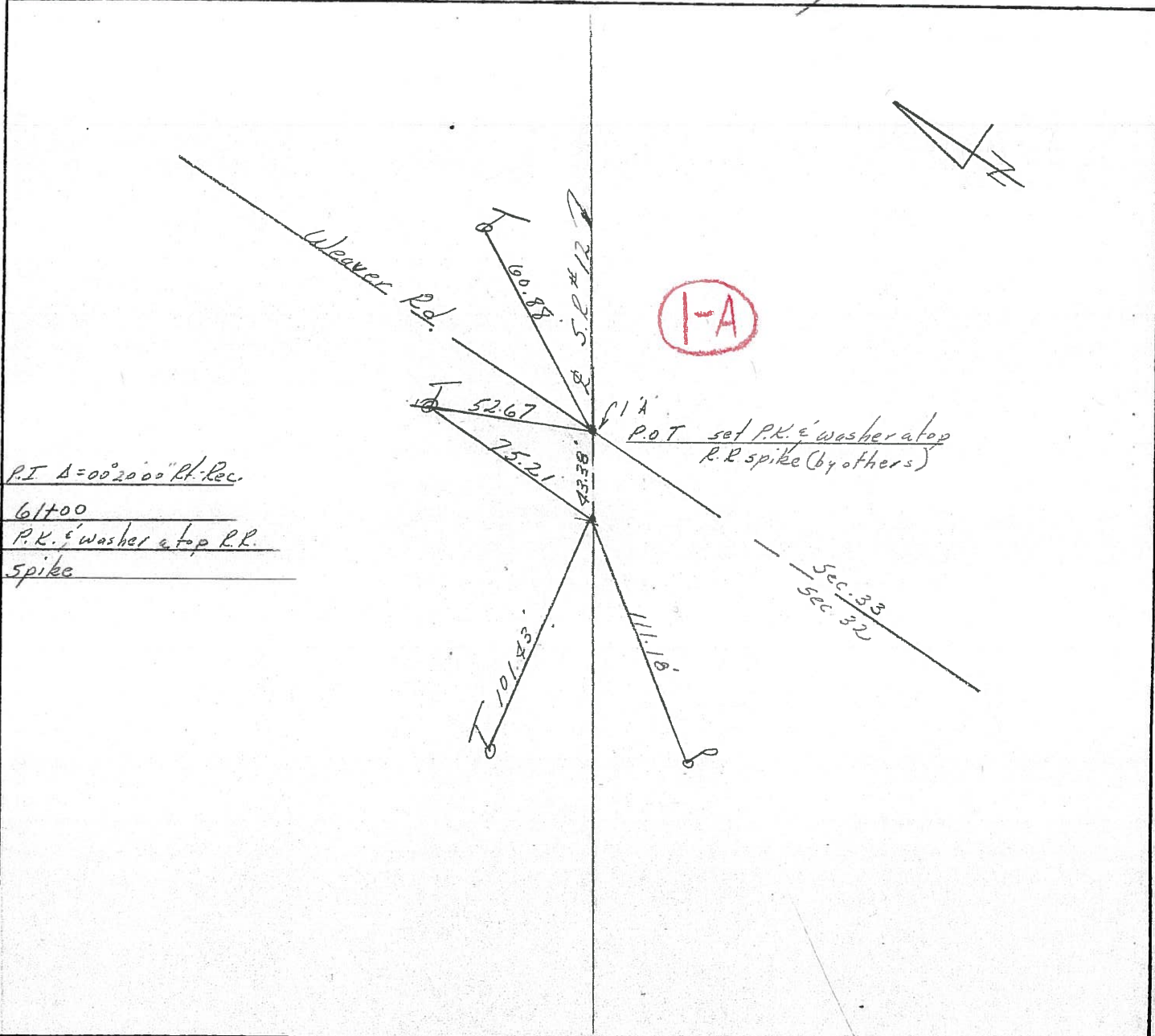
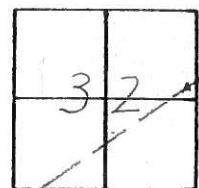
TYPE MONUMENT P.K. washer

ON SURFACE - BELOW on surface

LEFT - PAV'T. - RIGHT & Pav't

TO        EDGE PAVEMENT

S.L.M.       



P.I.  $\Delta = 00^{\circ}20'00''$  Lt. Rec.  
61+00  
P.K. washer atop R.R.  
spike

| PERSONNEL | TITLE | PERSONNEL | TITLE | COUNTY               | DATE         |
|-----------|-------|-----------|-------|----------------------|--------------|
| Schneider |       |           |       | Seneca               | 10-8-72      |
| Mosser    |       |           |       | S. R. 12             | WEATHER Fair |
| Barbour   |       |           |       | SEC. 32 Jackson Twp. | TEMP. 50°    |
| Geyman    |       |           |       |                      |              |

DESCRIPTION Fostoria Corp. to Sen. Co. Line JOB NO. \_\_\_\_\_

