

O.D.O.T. DISTRICT 2 SURVEY OFFICE (USE ONLY)

PERSONNEL _____ REFERENCE NO. 3 SHEET 4 OF 70
 NOTES NIESE DATE 8/31/21 ROUTE SR 12
 H.C. AUBLE WEATHER SUNNY COUNTY SENECA
 R.C. NIESE TEMP. 76° TOWNSHIP JACKSON
 DWG BY RHOADES PID PVTRAIN SECTION 33
 T 3 N R 13 E

TYPE MONUMENT P.K./WASHER

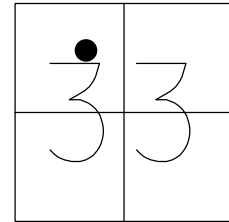
~~ON SURFACE~~ - BELOW 6'

OFFSET 0.1' ~~LT~~ : RT
10.1' TO LT EDGE PAVEMENT

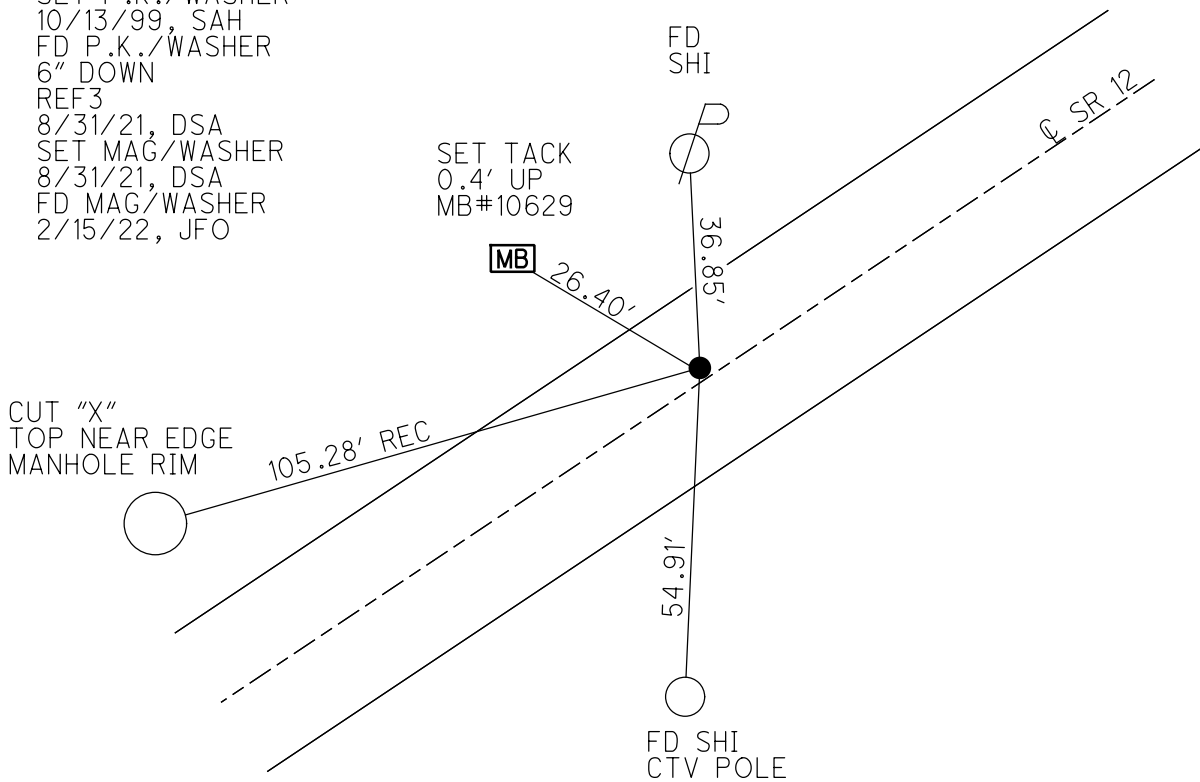
STATION: 190+17

HORZ.DATUM: NAD83 2011 GEOID: NAVD88 2018

GRID: NORTHING: 552097.210 EASTING: 1727860.766



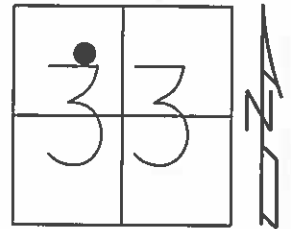
RECORD: P.O.T.
 STA.85+00
 P.K./WASHER ATOP
 MINE SPIKE
 1987, CRONIN
 FD P.K./WASHER
 8/17/99, CL
 SET P.K./WASHER
 10/13/99, SAH
 FD P.K./WASHER
 6" DOWN
 REF3
 8/31/21, DSA
 SET MAG/WASHER
 8/31/21, DSA
 FD MAG/WASHER
 2/15/22, JFO



O.D.O.T. DISTRICT 2 SURVEY OFFICE (USE ONLY)

PERSONNEL _____ REFERENCE NO. 3 SHEET 4 OF 70
 NOTES LOEHRKE DATE 08-17-99 ROUTE SR 12
 H.C. VAN DUSEN WEATHER FAIR COUNTY SENECA
 R.C. ROUSOS TEMP. 74° TOWNSHIP JACKSON
 _____ SECTION 33
 _____ T 3 N R 13 E

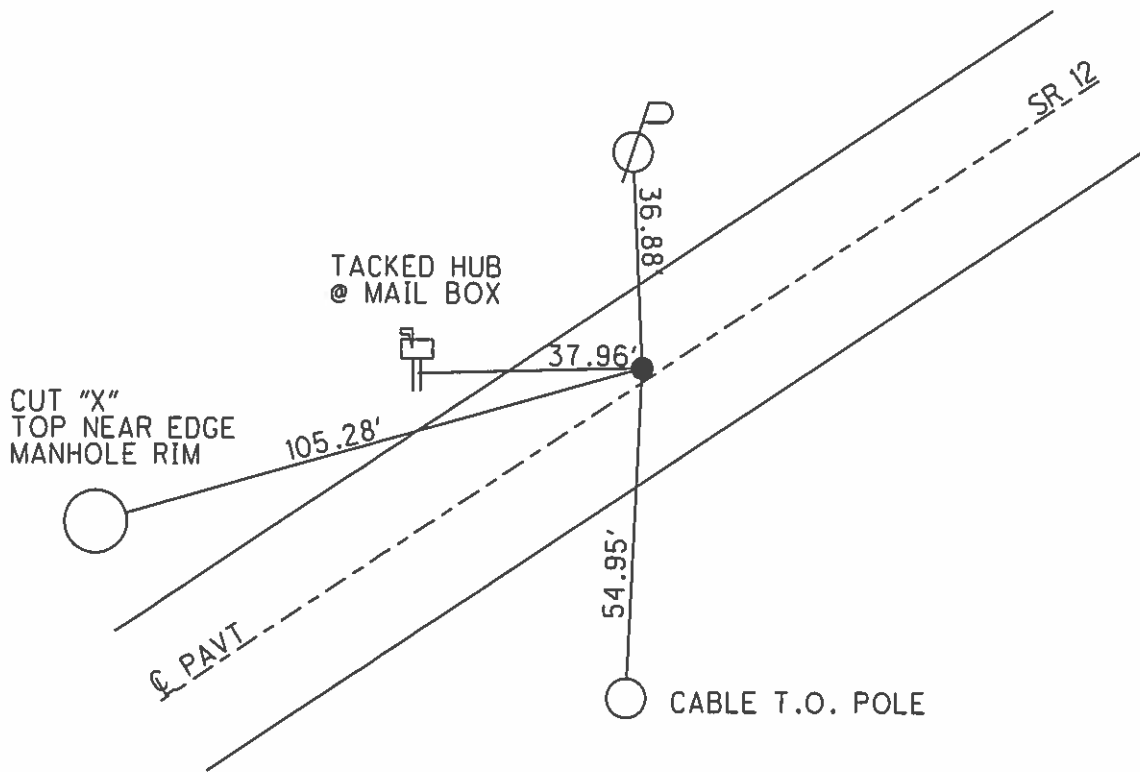
TYPE MONUMENT _____ PK/WASHER _____
 ON SURFACE - BELOW _____ ON _____
 LEFT - Q PAV'T - RIGHT 0.5' _____
10.1' TO LT EDGE PAVEMENT _____
 S.L.M. _____ 190+17 _____



GRID: NORTHING: _____ EASTING: _____

10-13-99 SET PK/WASHER, SAH

RECORD - CRONIN - 1987
 POT 85+00 PLAN STA
 PK/WASHER OVER MINE SPIKE



O.D.O.T. DISTRICT 2 SURVEY OFFICE

PERSONNEL _____

REFERENCE NO. 3

SHEET 2 OF 52

NOTES hoehnke

H.C. VanNusen

DATE 8-17-99

ROUTE 12

R.C. Rousos

WEATHER Fair

COUNTY Seneca

TEMP. +74°F

TOWNSHIP Jackson

SECTION 33

T 3 N R 13 E

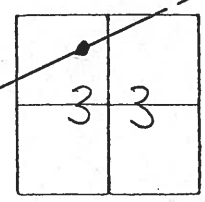
TYPE MONUMENT PK/W

ON SURFACE - ~~BELOW~~ on surface

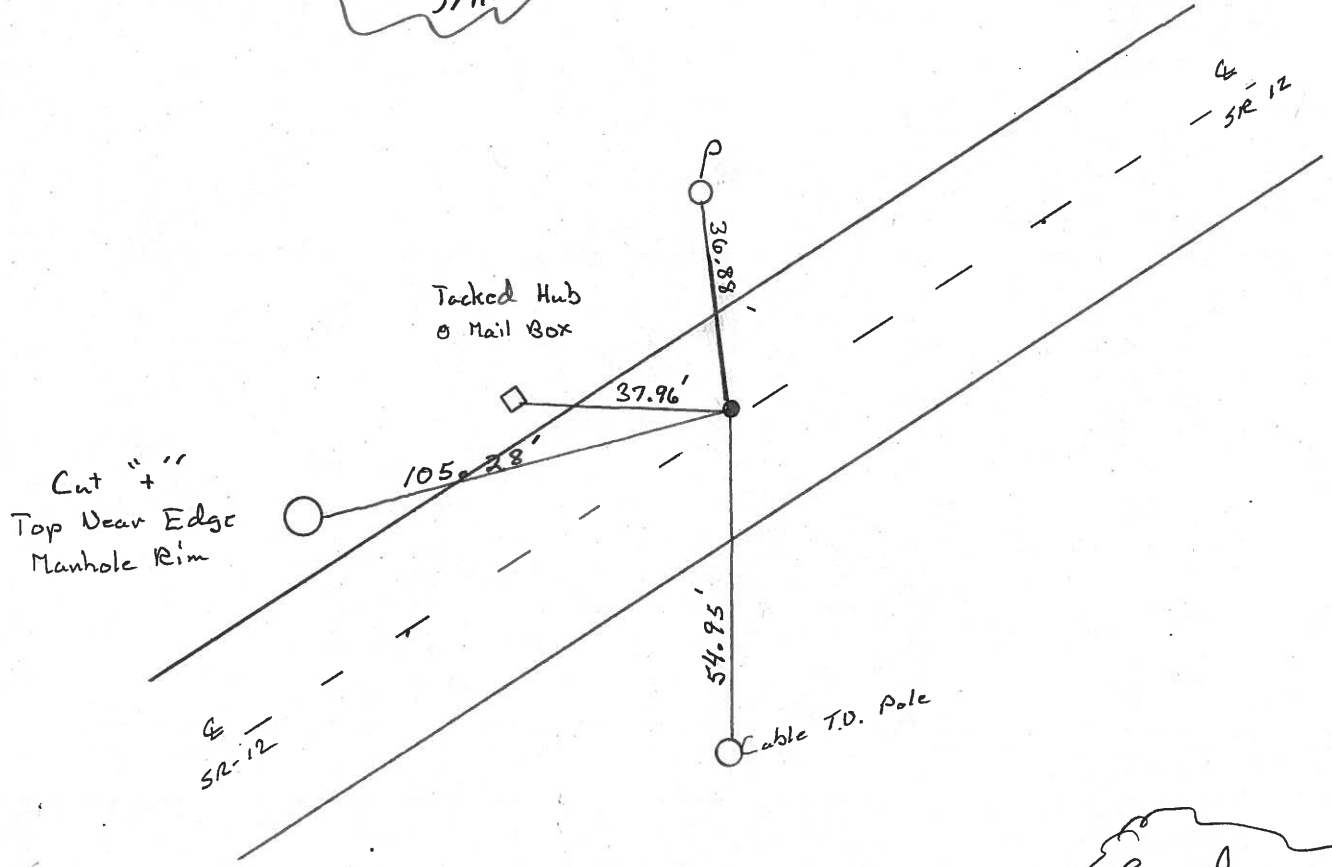
LEFT-EDGE PAVT - ~~RIGHT~~ 0.5' Lt of &

10.1' TO Lt EDGE PAVEMENT

S.L.M. 190+17



Set PK/W
10-13-99
SAH



Record
Pot 85100 Plan Sta
PK/W over Misc Spike
CROWN - 1987

O.D.O.T. DISTRICT 2 SURVEY OFFICE

PERSONNEL

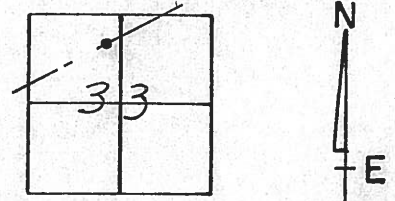
NOTES Cronin
 H.C. Ripple
 R.C. Geyman
Barbour

REFERENCE NO. 3
 DRAWN 1/22/87
 DATE 1/09/87
 WEATHER overcast
 TEMP. 27°

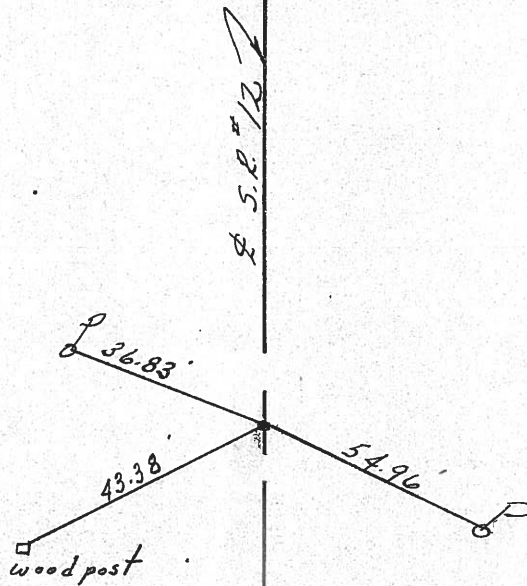
SHEET 2 OF _____

ROUTE #12
 COUNTY Seneca
 TOWNSHIP Jackson
 SECTION 33
T 3 N R 13 E

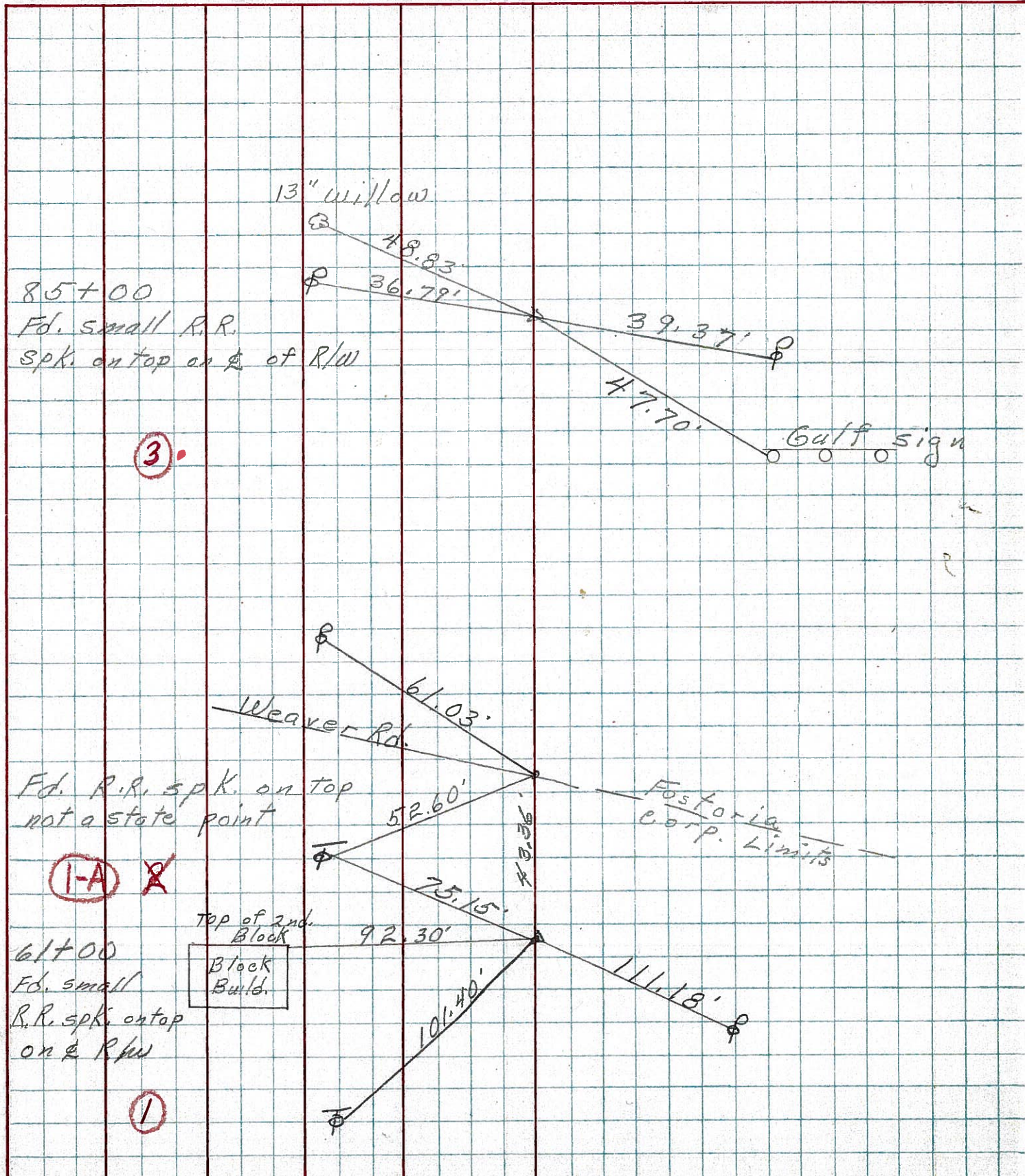
TYPE MONUMENT P.K. & washer
 ON SURFACE - BELOW on surface
 LEFT - & PAV'T. - RIGHT & Pavt.
 _____ TO _____ EDGE PAVEMENT
 S.L.M. _____



P.O.T.
85+00
P.K. & washer atop
same atop minespike



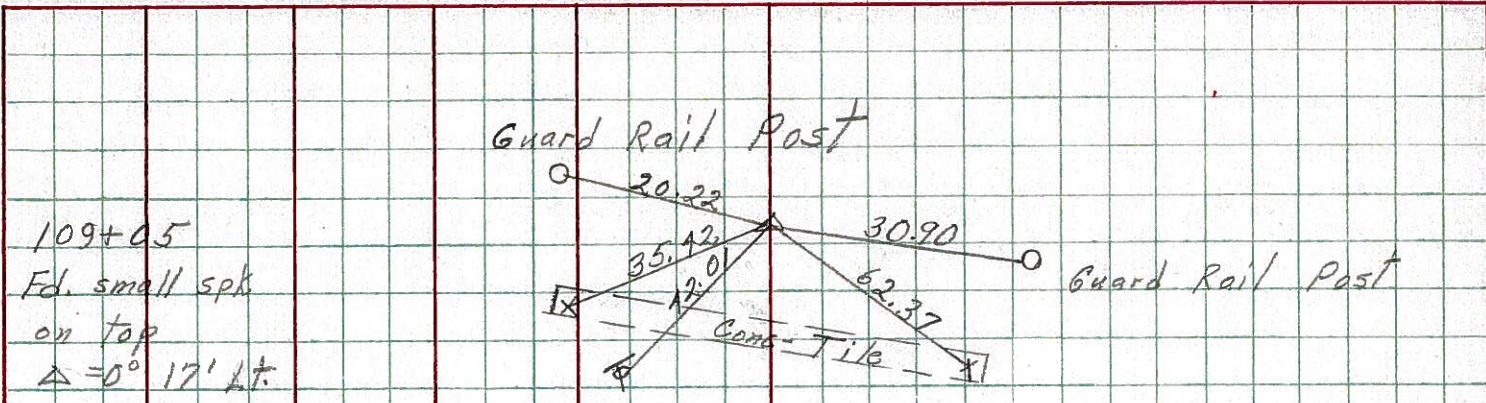
PERSONNEL TITLE PERSONNEL TITLE COUNTY Seneca DATE 10-8-72
Schneider _____ Mosser _____ S. R. 12 WEATHER Fair
Barbour _____ Geyman _____ SEC. 32 Jackson Twp. TEMP. 50°
 DESCRIPTION Fostoria Corp. to Sen. Co. Line JOB NO. _____
 LEFT CENTER LINE RIGHT



PERSONNEL	TITLE	PERSONNEL	TITLE	COUNTY	DATE
<u>Schneider</u>				<u>Seneca</u>	<u>10-8-68</u>
<u>Barbour</u>				S. R.	<u>12</u>
<u>Redding</u>				WEATHER	<u>Fair</u>
<u>Potts</u>				SEC. <u>Fostoria Corp to Sen. Co. Line</u>	TEMP. <u>70°</u>

DESCRIPTION Ties for Control Points JOB NO. _____

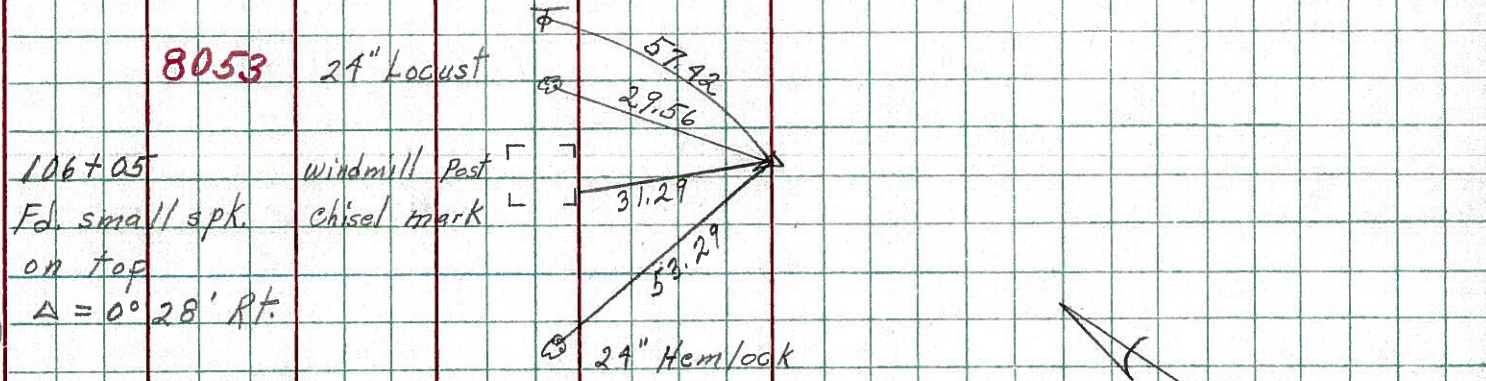
5



109+05
Fd. small spk
on top
 $\Delta = 0^\circ 17' \text{ Lt.}$

8053 24" Locust

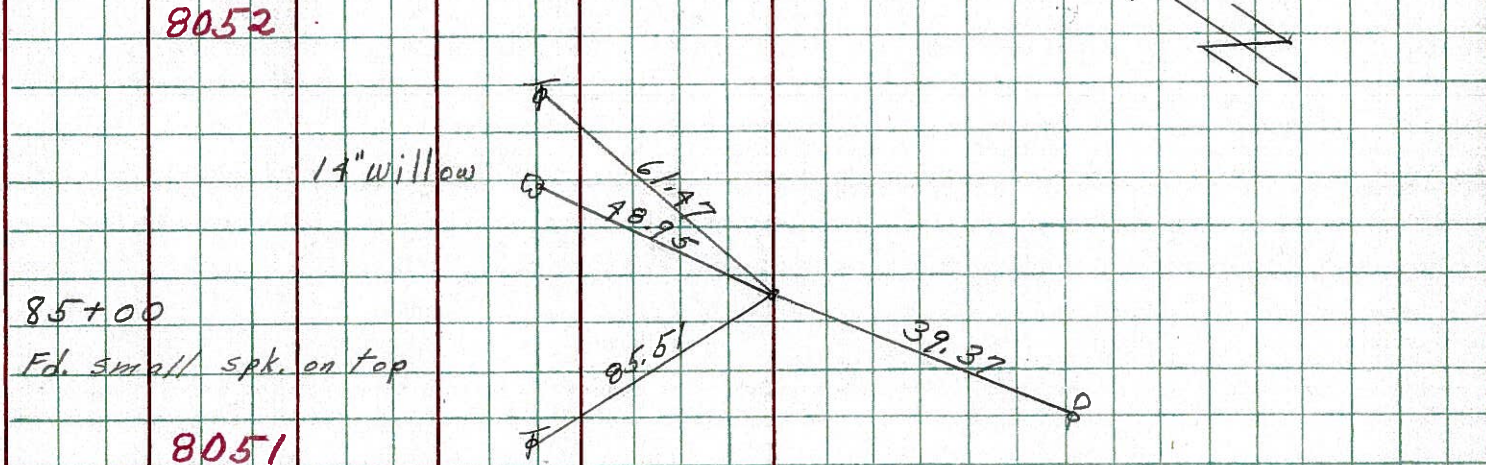
4



106+05
Fd. small spk
on top
 $\Delta = 0^\circ 28' \text{ Rt.}$

8052

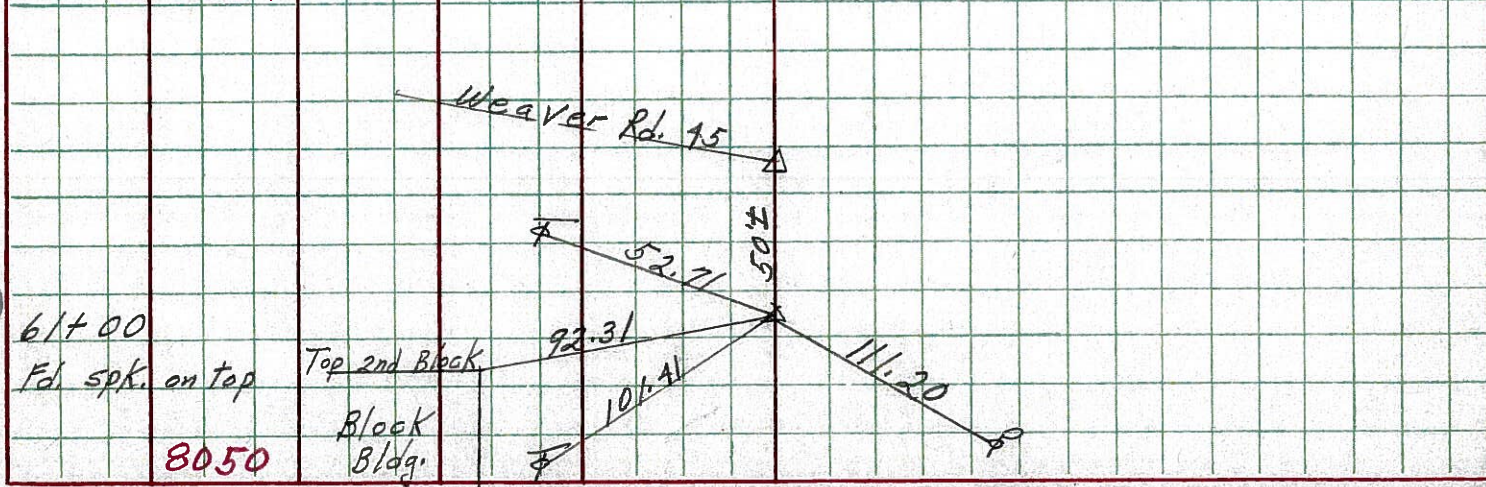
3



85+00
Fd. small spk. on top

8051

1



61+00
Fd. spk. on top

8050