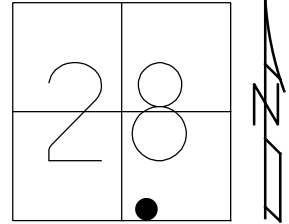


O.D.O.T. DISTRICT 2 SURVEY OFFICE (USE ONLY)

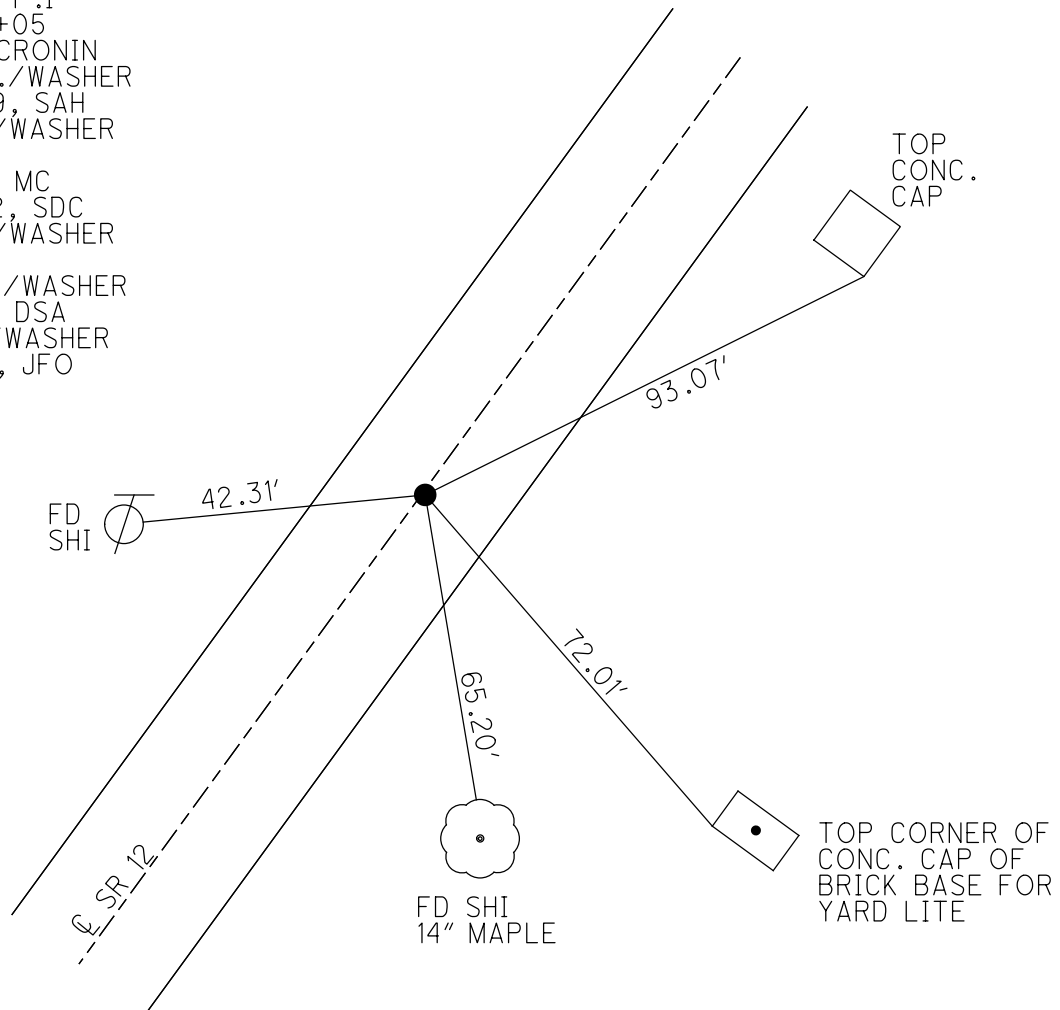
PERSONNEL _____ REFERENCE NO. 5 SHEET 6 OF 70
 NOTES NIESE DATE 8/30/21 ROUTE SR 12
 H.C. AUBLE WEATHER CLOUDY COUNTY SENECA
 R.C. NIESE TEMP. 74° TOWNSHIP JACKSON
 _____ SECTION 28
 DWG BY RHOADES PID PVTRAIN T 3 N R 13 E

TYPE MONUMENT MAG/WASHER
 ON SURFACE - ~~BELOW~~ ON
 OFFSET Q PAVEMENT ON LT : RT
10.6' TO LT EDGE PAVEMENT
 STATION: 214+10

HORIZ. DATUM: NAD83 2011 GEOID: NAVD88 2018
 GRID: NORTHING: 553379.820 EASTING: 1729878.279



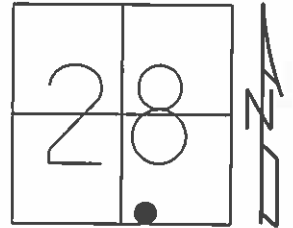
RECORD: P.I
 STA. 109+05
 1/1987, CRONIN
 SET P.K./WASHER
 10/13/99, SAH
 FD P.K./WASHER
 REF5
 5/31/12, MC
 10/22/12, SDC
 FD P.K./WASHER
 REF5
 SET MAG/WASHER
 8/31/21, DSA
 FD MAG/WASHER
 2/15/22, JFO



O.D.O.T. DISTRICT 2 SURVEY OFFICE (USE ONLY)

PERSONNEL	REFERENCE NO.	<u>5</u>	SHEET	<u>6</u>	OF	<u>70</u>
NOTES	<u>HARBAUGH</u>	DATE	<u>05-18-12</u>	ROUTE	<u>SR 12</u>	
H.C.	<u>HUSS</u>	WEATHER	<u>SUNNY</u>	COUNTY	<u>SENECA</u>	
R.C.	<u>ROUSOS</u>	TEMP.	<u>60°</u>	TOWNSHIP	<u>JACKSON</u>	
				SECTION	<u>28</u>	
				T	<u>3</u>	R
					<u>N</u>	<u>13</u>
					<u>E</u>	

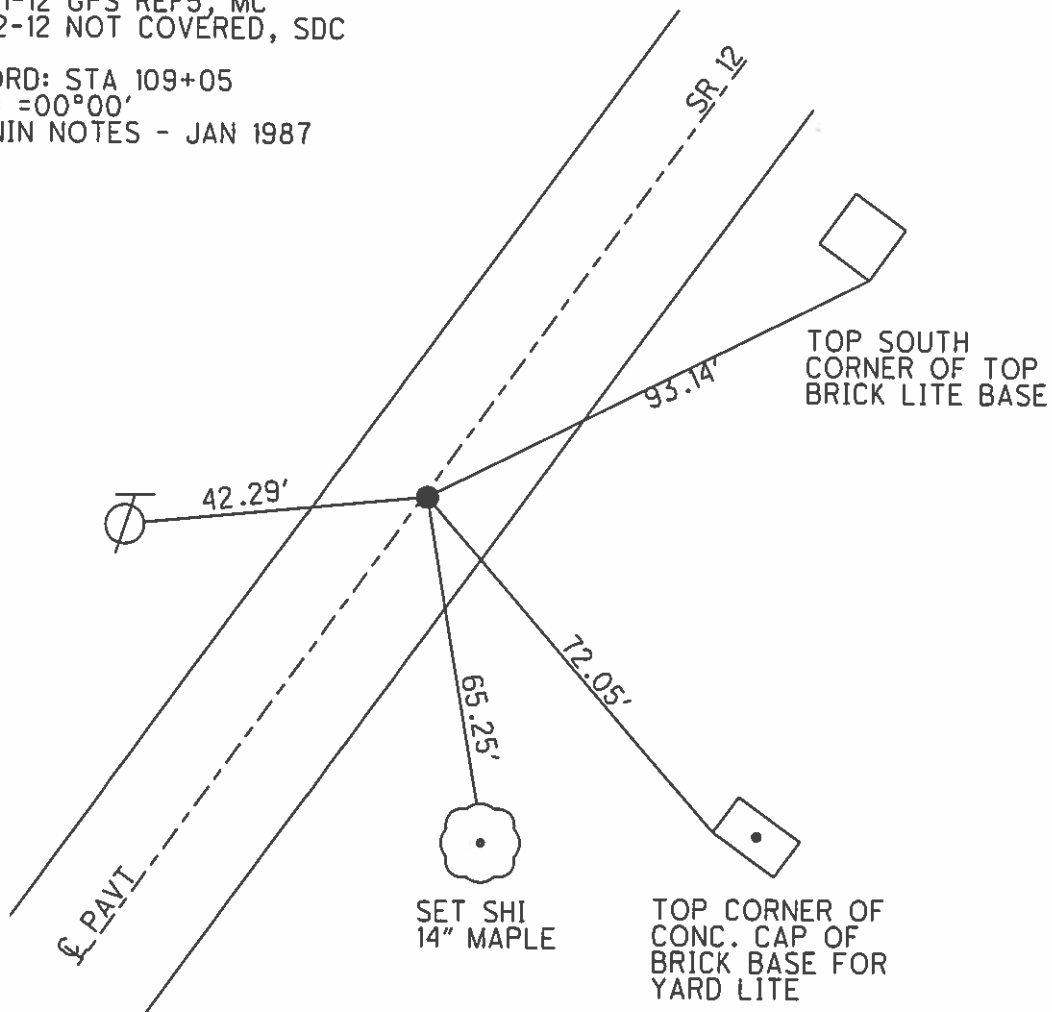
TYPE MONUMENT _____ PK/WASHER _____
 ON SURFACE - BELOW _____ ON _____
 LEFT - C PAV'T - RIGHT _____ 0.2' _____
10.6' TO LT EDGE PAVEMENT
 S.L.M. _____ 214+10 _____



GRID: NORTHING: 553379.906 EASTING: 1729878.264

10-13-99 SET PK/WASHER, SAH
 05-18-12 FD PK/WASHER, JMH
 05-31-12 GPS REF5, MC
 10-22-12 NOT COVERED, SDC

RECORD: STA 109+05
 P.I. = 00°00'
 CRONIN NOTES - JAN 1987



O.D.O.T. DISTRICT 2 SURVEY OFFICE

PERSONNEL

REFERENCE NO. 5

SHEET 4 OF 52

NOTES LOEHRKE

H.C. VAN DUSEN

R.C. Blake

DATE 8-17-99

WEATHER FAIR

TEMP. +74°

ROUTE 12

COUNTY SENeca

TOWNSHIP JACKSON

SECTION 28

T 3 N R 13 E

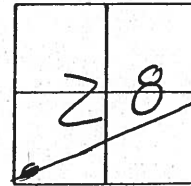
TYPE MONUMENT PK $\frac{3}{8}$ WASHER

ON SURFACE - ~~BELOW~~ Yes

~~LEFT~~ - E PAV'T. - RIGHT 0.2'

10.9 TO Lt EDGE PAVEMENT

S.L.M. 214+10



Record: CRANINS 1987 Notes

P.I. $\Delta = 0^{\circ} - 00'$

Sta 109+05

Set PK/w
10-13-99
SAH

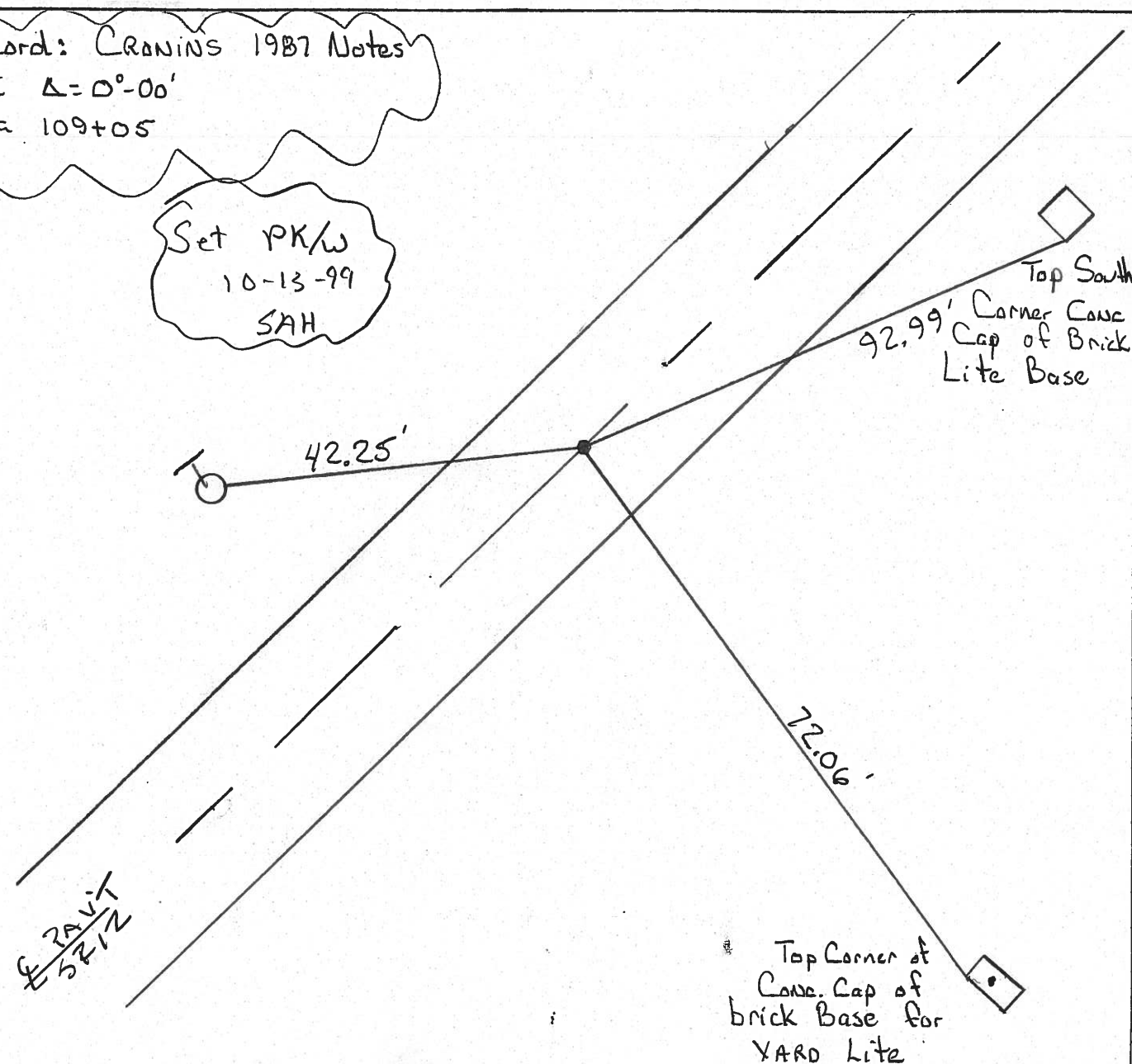
Top South
Corner Conc
Cap of Brick
Lite Base

42.25'

72.06'

E PAV'T
SR12

Top Corner of
Conc. Cap of
brick Base for
YARD Lite



O.D.O.T. DISTRICT 2 SURVEY OFFICE

PERSONNEL _____

REFERENCE NO. 5

SHEET 4 OF _____

NOTES Cronin

DRAWN 1/22/87

H.C. Ripple

DATE 1/09/87

R.G. Geyman

WEATHER _____

Barbour

TEMP. _____

ROUTE #12

COUNTY Seneca

TOWNSHIP Jackson

SECTION 28

T 3 N R 13 E

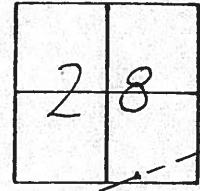
TYPE MONUMENT P.K. & washer

ON SURFACE - BELOW on surface

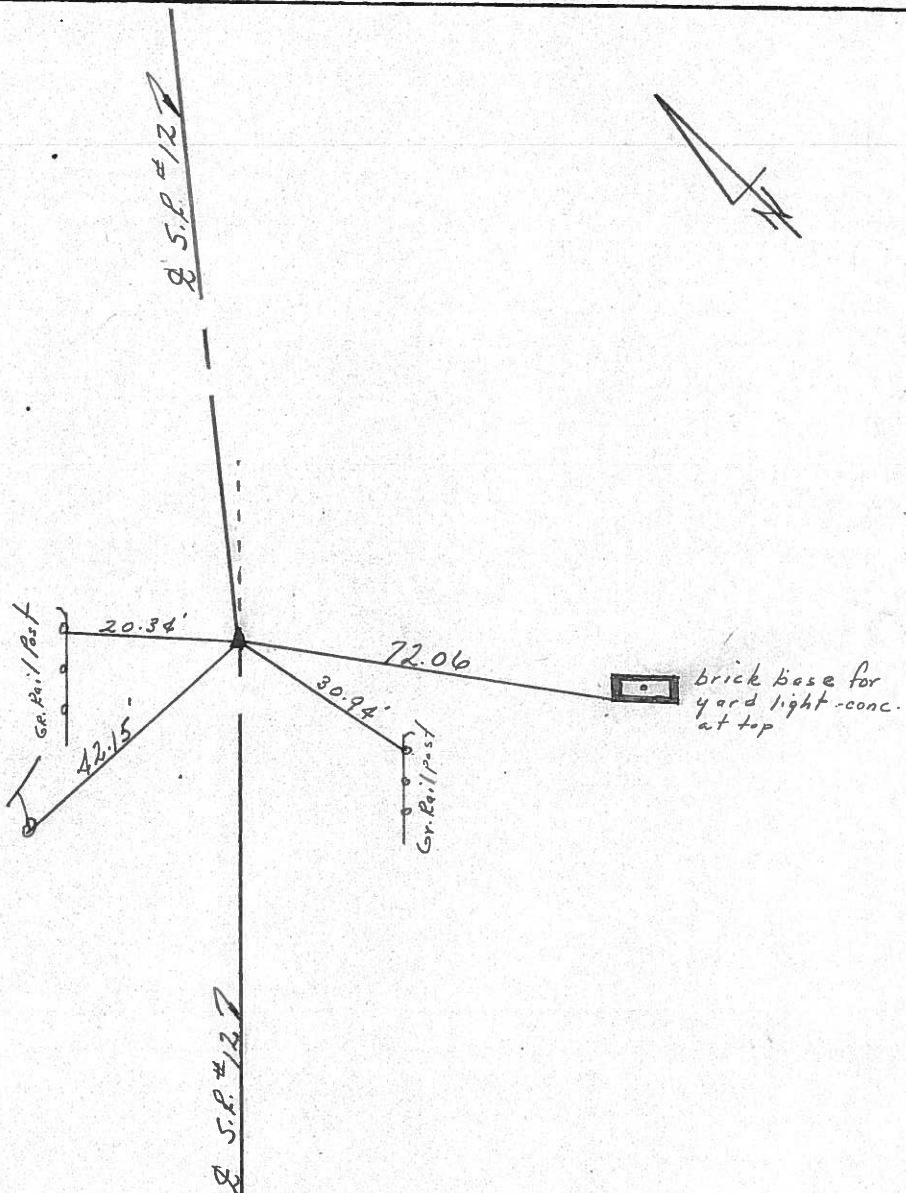
LEFT - to PAV'T. - RIGHT & Pav't.

_____ TO _____ EDGE PAVEMENT

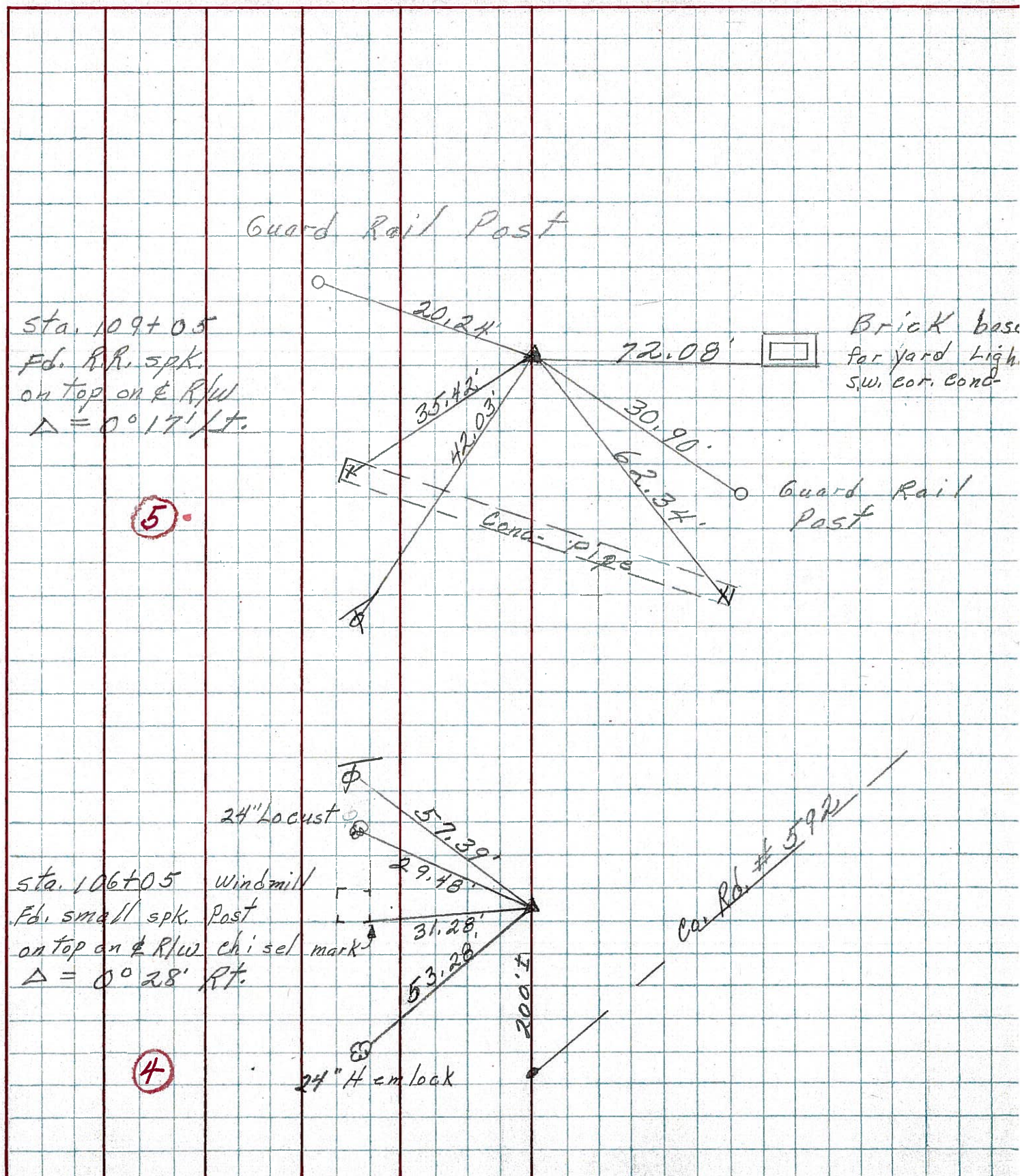
S.L.M. _____



P.I. Δ = 00°
109+05
P.K. & washer atop
P.R. spike



PERSONNEL	TITLE	PERSONNEL	TITLE
		COUNTY	<u>Seneca</u>
		DATE	<u>10-10-72</u>
		S. R.	<u>12</u>
		WEATHER	<u>Fair</u>
		SEC.	<u>32 Jackson Twp.</u>
		TEMP.	<u>50°</u>
DESCRIPTION <u>Fostoria Corp. to San. Co. Line</u>			JOB NO.
LEFT	CENTER LINE	RIGHT	



PERSONNEL TITLE PERSONNEL TITLE

COUNTY Seneca DATE 10-8-68

Schneider

Barbour

Redding

Potts

S. R. 12 WEATHER Fair

SEC. Fostoria Corp to Sen. Co. Line TEMP 70°

DESCRIPTION Ties for Control Points JOB NO.

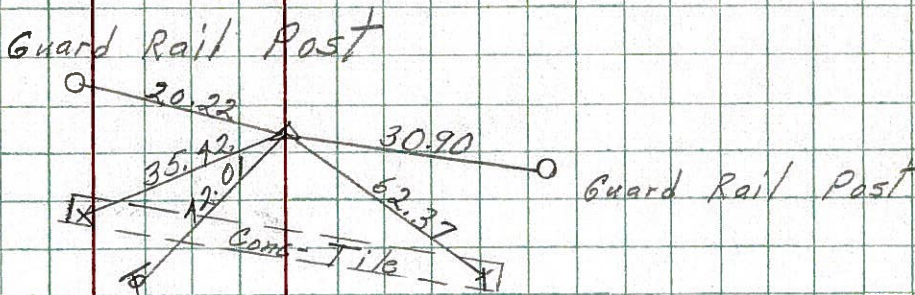
LEFT CENTER LINE RIGHT

5

109+0.5
Fd. small spk
on top
 $\Delta = 0^\circ 17' Lt.$

8053

24" Locust

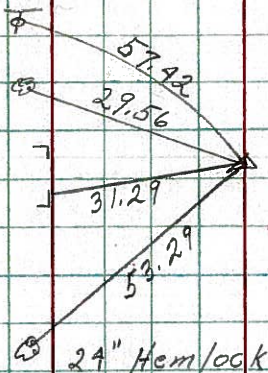


4

106+0.5
Fd. small spk.
on top
 $\Delta = 0^\circ 28' Rt.$

8052

windmill post
chisel mark

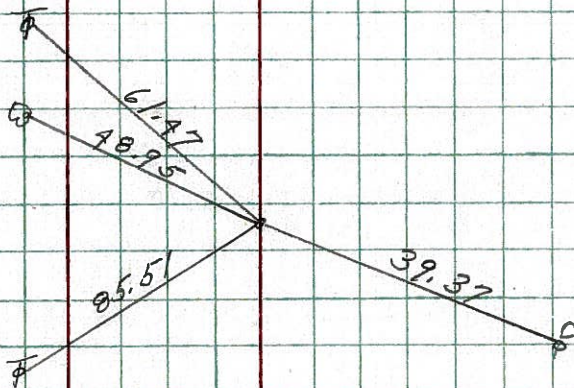


3

85+0.0
Fd. small spk. on top

8051

14" Willow

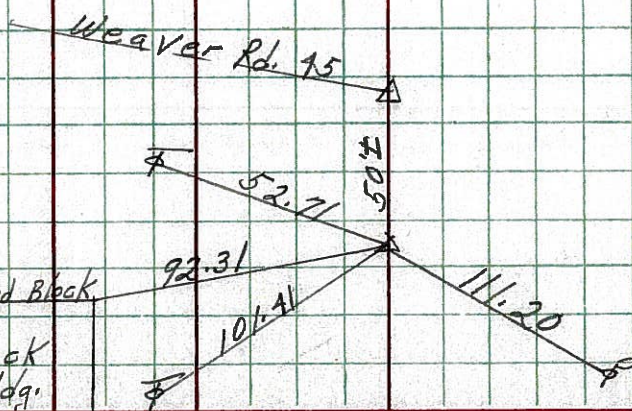


1

61+0.0
Fd. spk. on top

8050

Top 2nd Block
Block Bldg.



PERSONNEL TITLE PERSONNEL TITLE

COUNTY Seneca

DATE

S. R. 12-113

WEATHER

SEC.

TEMP.

DESCRIPTION

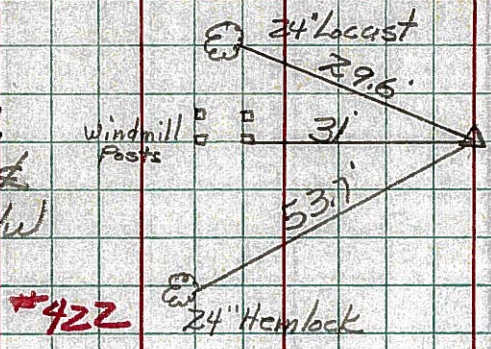
LEFT

CENTER LINE

RIGHT

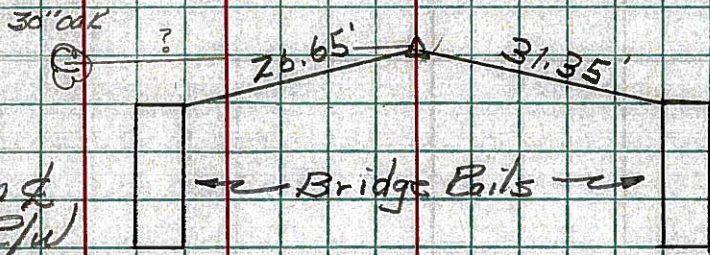
JOB NO.

4 Sta. 106+05
Δ = 0°-28' E
Iron pin on E of E/W



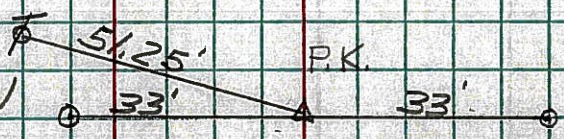
#422

5 Sta. 109+05
Δ = 0°-17' E
Iron pin on E of E/W



#423

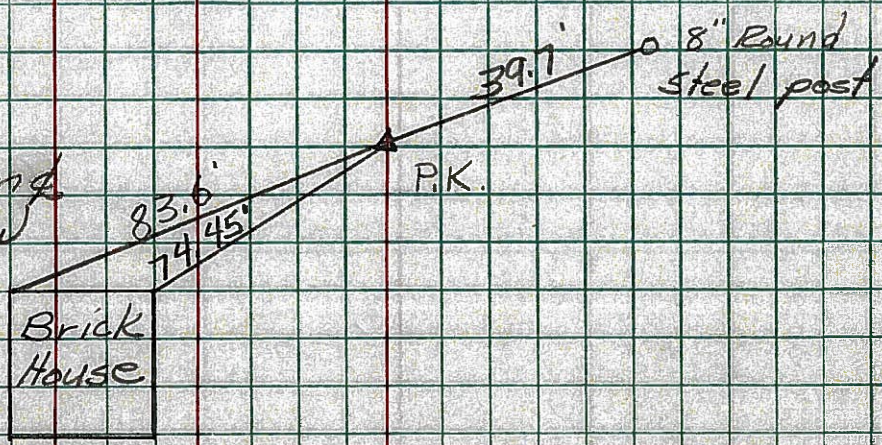
6 Sta. 120+00
Iron pin on E of E/W



#424

End Sec. P. Start Sec. F.

Sta. 169+79.99
P.C. Iron pin on E of E/W



#425