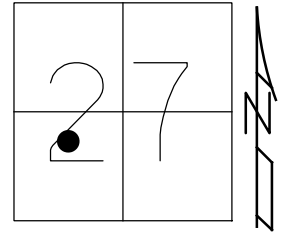


O.D.O.T. DISTRICT 2 SURVEY OFFICE (USE ONLY)

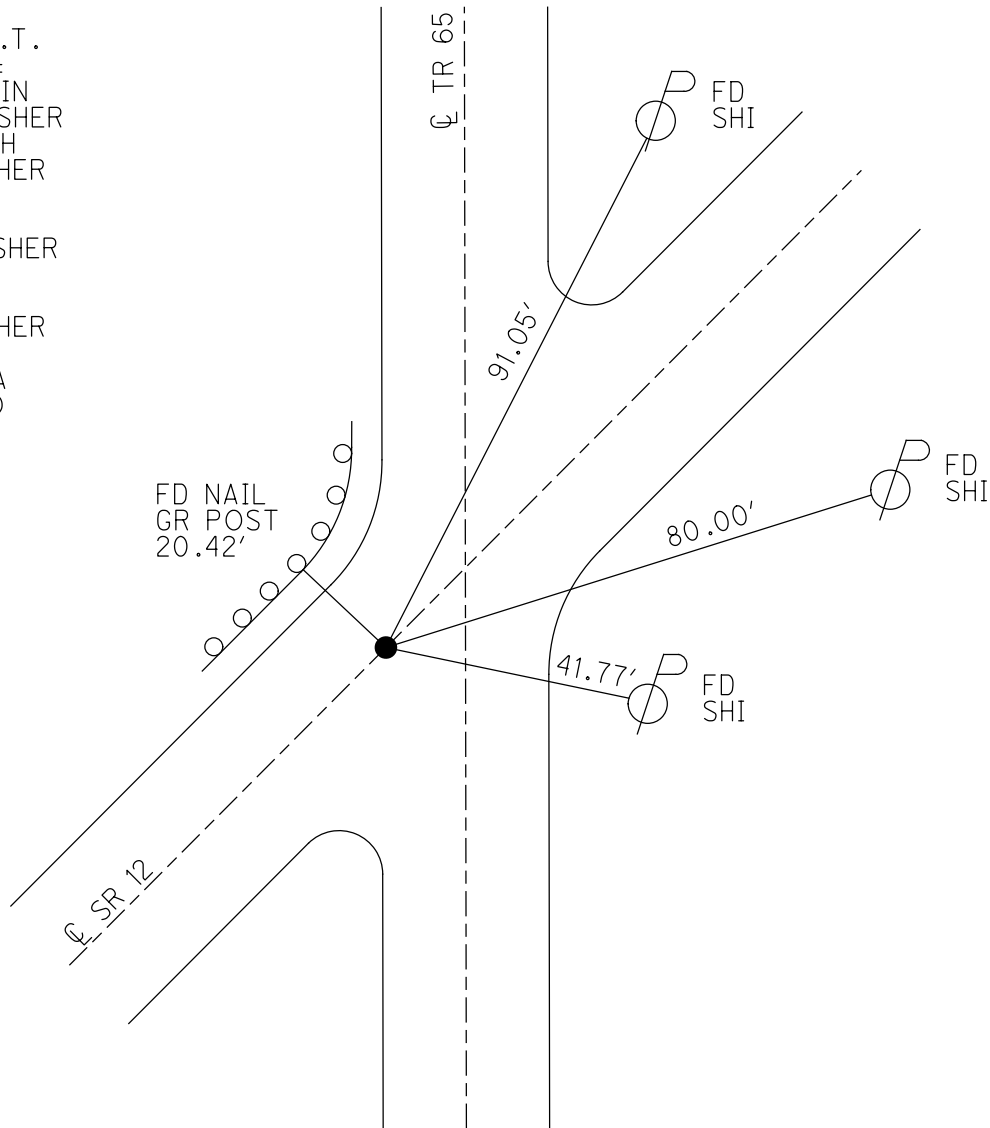
PERSONNEL _____ REFERENCE NO. 7 SHEET 8 OF 70
 NOTES NIESE DATE 8/30/21 ROUTE SR 12
 H.C. AUBLE WEATHER CLOUDY COUNTY SENECA
 R.C. NIESE TEMP. 76° TOWNSHIP JACKSON
 DWG BY RHOADES PID PVTRAIN SECTION 27
 T 3 N R 13 E

TYPE MONUMENT P.K./WASHER
 ON SURFACE - ~~BELOW~~ ON
 OFFSET Q PAVEMENT ON LT : RT
- TO - EDGE PAVEMENT
 STATION: 245+39



HORZ.DATUM: NAD83 2011 GEOID: NAVD88 2018
 GRID: NORTHING: 555052.820 EASTING: 1732515.311

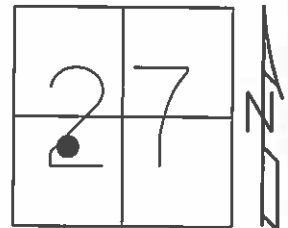
RECORD: P.O.T.
 STA.140+42 ±
 1/1987, CRONIN
 SET P.K./WASHER
 10/13/99, SAH
 FD P.K./WASHER
 REF7
 5/31/12, MC
 SET MAG/WASHER
 NEWREF7
 11/15/12, SDC
 FD P.K./WASHER
 REF7
 8/30/21, DSA
 2/15/22, JFO



O.D.O.T. DISTRICT 2 SURVEY OFFICE (USE ONLY)

PERSONNEL _____ REFERENCE NO. 7 SHEET 8 OF 70
 NOTES HARBAUGH DATE 05-18-12 ROUTE SR 12
 H.C. ROUSOS WEATHER SUNNY COUNTY SENECA
 R.C. HUSS TEMP. 60° TOWNSHIP JACKSON
 _____ SECTION 27
 T 3 N R 13 E

TYPE MONUMENT _____ PK/WASHER _____
 ON SURFACE - BELOW _____ ON _____
 LEFT - Q PAV'T - RIGHT _____ ON _____
 _____ TO _____ EDGE PAVEMENT
 S.L.M. _____ 245+39

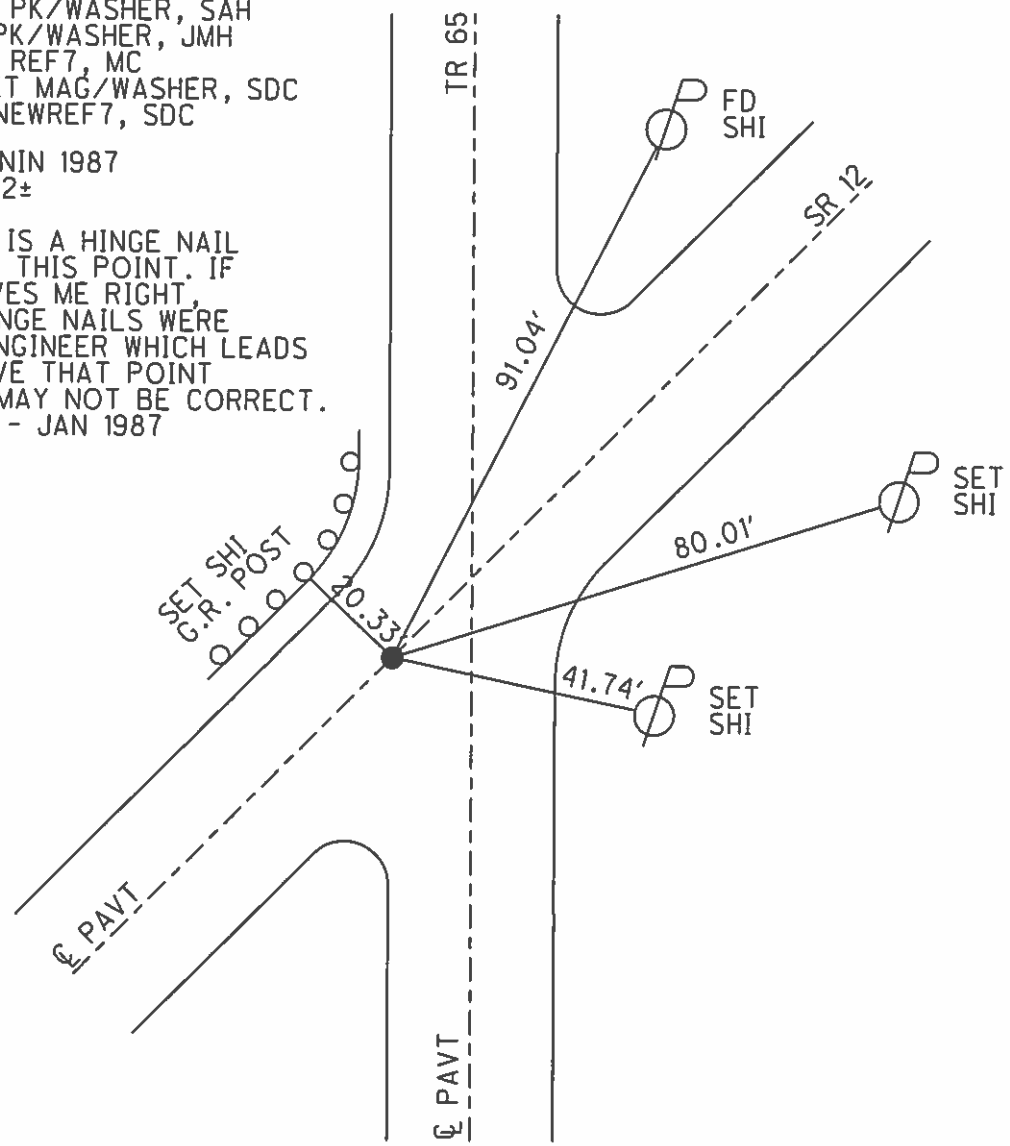


GRID: NORTHING: 555052.922 EASTING: 1732515.260

10-13-99 SET PK/WASHER, SAH
 05-18-12 FD PK/WASHER, JMH
 05-31-12 GPS REF7, MC
 10-21-12 RESET MAG/WASHER, SDC
 11-15-12 GPS NEWREF7, SDC

RECORD: CRONIN 1987
 P.O.T. 140+42±

NOTE: THERE IS A HINGE NAIL
 5.04' ELY OF THIS POINT. IF
 MEMORY SERVES ME RIGHT,
 NUMEROUS HINGE NAILS WERE
 SET BY CO.ENGINEER WHICH LEADS
 ME TO BELIEVE THAT POINT
 REFERENCED MAY NOT BE CORRECT.
 JACK CRONIN - JAN 1987



O.D.O.T. DISTRICT 2 SURVEY OFFICE

PERSONNEL

REFERENCE NO. 7

SHEET 6 OF 52

NOTES LOEHRKE

H.C. VAN DUSEN

R.C. ROUSSOS

DATE 8-17-99

WEATHER FAIR

TEMP. +75

ROUTE S.R. 12

COUNTY Seneca

TOWNSHIP Jackson

SECTION 27

T 3 N R 13 E

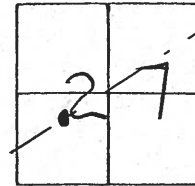
TYPE MONUMENT P.K. NAIL

~~ON~~ SURFACE - BELOW 2"

~~LEFT~~ - ~~C~~ PAV'T. - ~~RIGHT~~ Yes

~~-~~ TO ~~-~~ EDGE PAVEMENT

S.L.M. 245+39



Record: Cronin Notes 1987

P.O.T. 140+42±

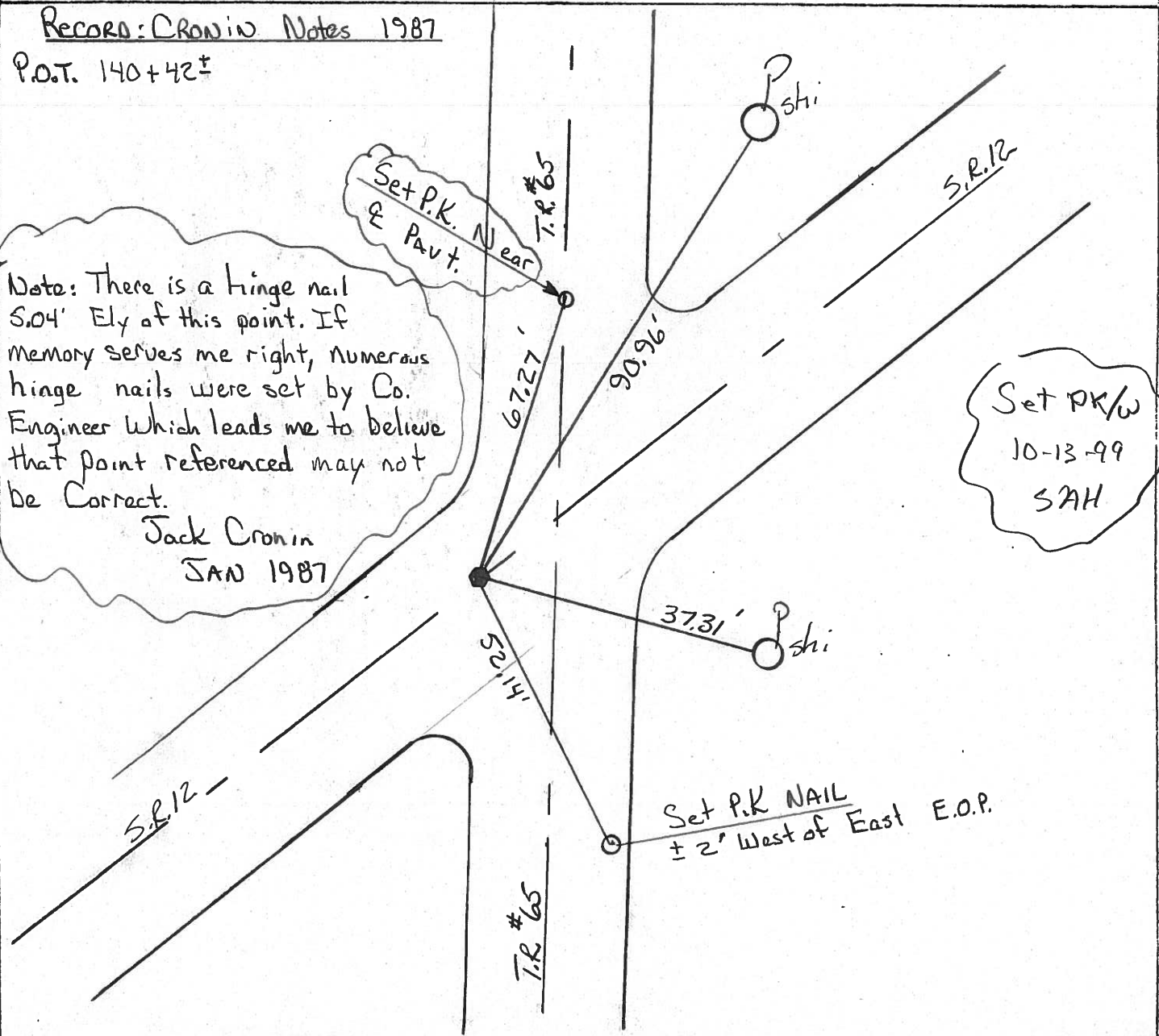
Note: There is a hinge nail 5.04' Ely of this point. If memory serves me right, numerous hinge nails were set by Co. Engineer which leads me to believe that point referenced may not be correct.

Jack Cronin
JAN 1987

Set P.K. Nail
& Pav't. Near
T.R. #65

Set PK/W
10-13-99
SAH

Set P.K. NAIL
± 2' West of East E.O.P.



O.D.O.T. DISTRICT 2 SURVEY OFFICE

PERSONNEL

NOTES Cronin
 H.C. Ripple
 R.C. Geyman
Barbour

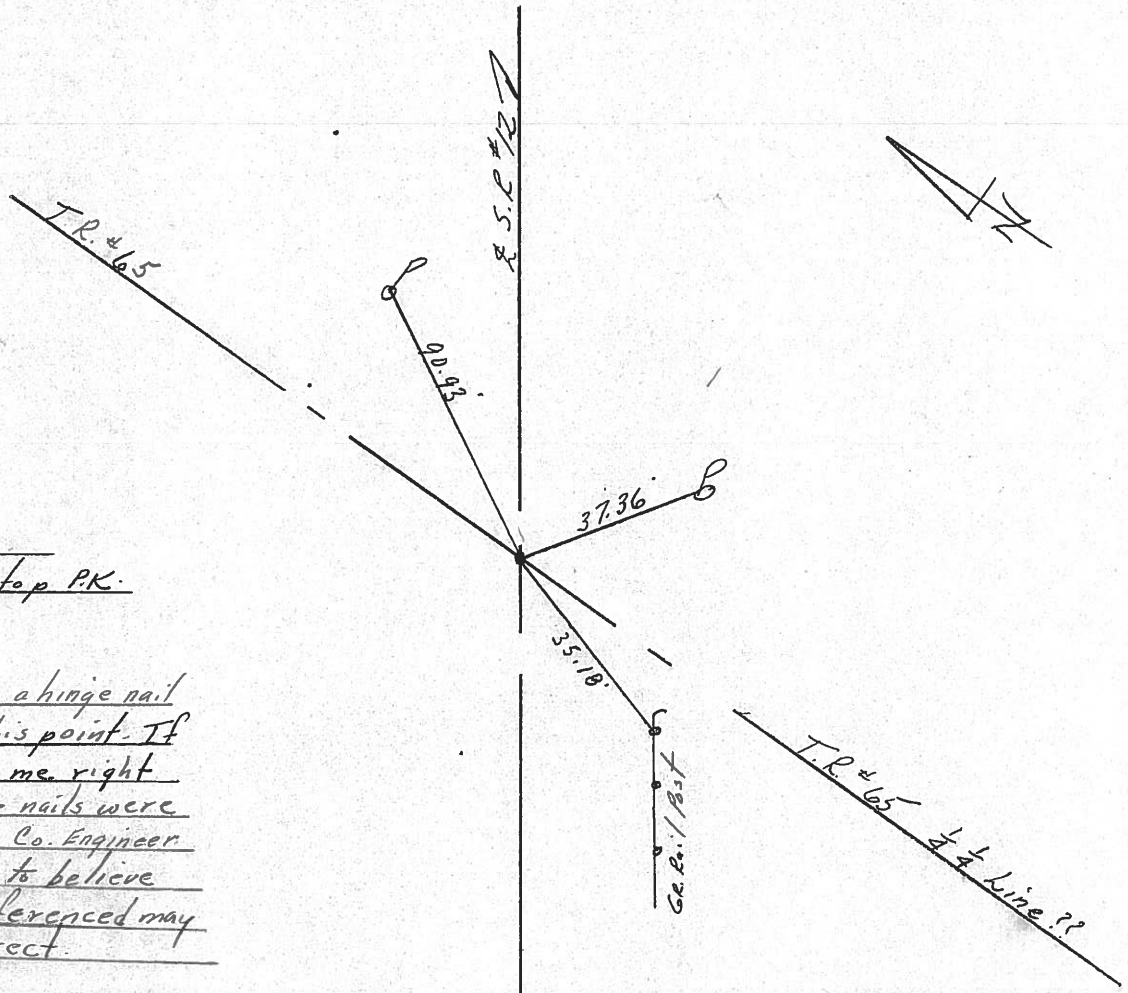
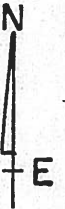
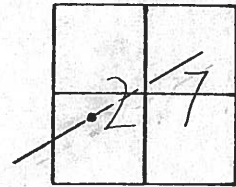
REFERENCE NO. 7

DRAWN 1/22/87
 DATE 1/09/87
 WEATHER overcast
 TEMP. 27°

SHEET 6 OF

ROUTE #12
 COUNTY Seneca
 TOWNSHIP Jackson
 SECTION 27
T 3 N R 13 E

TYPE MONUMENT P.K. & washer
 ON SURFACE - BELOW on surface
 LEFT - to PAV'T. - RIGHT & Pav't.
 TO EDGE PAVEMENT
 S.L.M.



P.O.T.
140+42±
P.K. & washer atop P.K.

Note: There is a hinge nail
5.04' Ely of this point. If
memory serves me right
numerous hinge nails were
set by Seneca Co. Engineer
which leads me to believe
that point referenced may
not be correct.

PERSONNEL TITLE PERSONNEL TITLE

Cronin
Ripple
Geyman
Barbour

COUNTY Seneca

S. R. #121

WEATHER sunny - windy

SEC. Culv. S.L.M. 04.50

TEMP. 40°

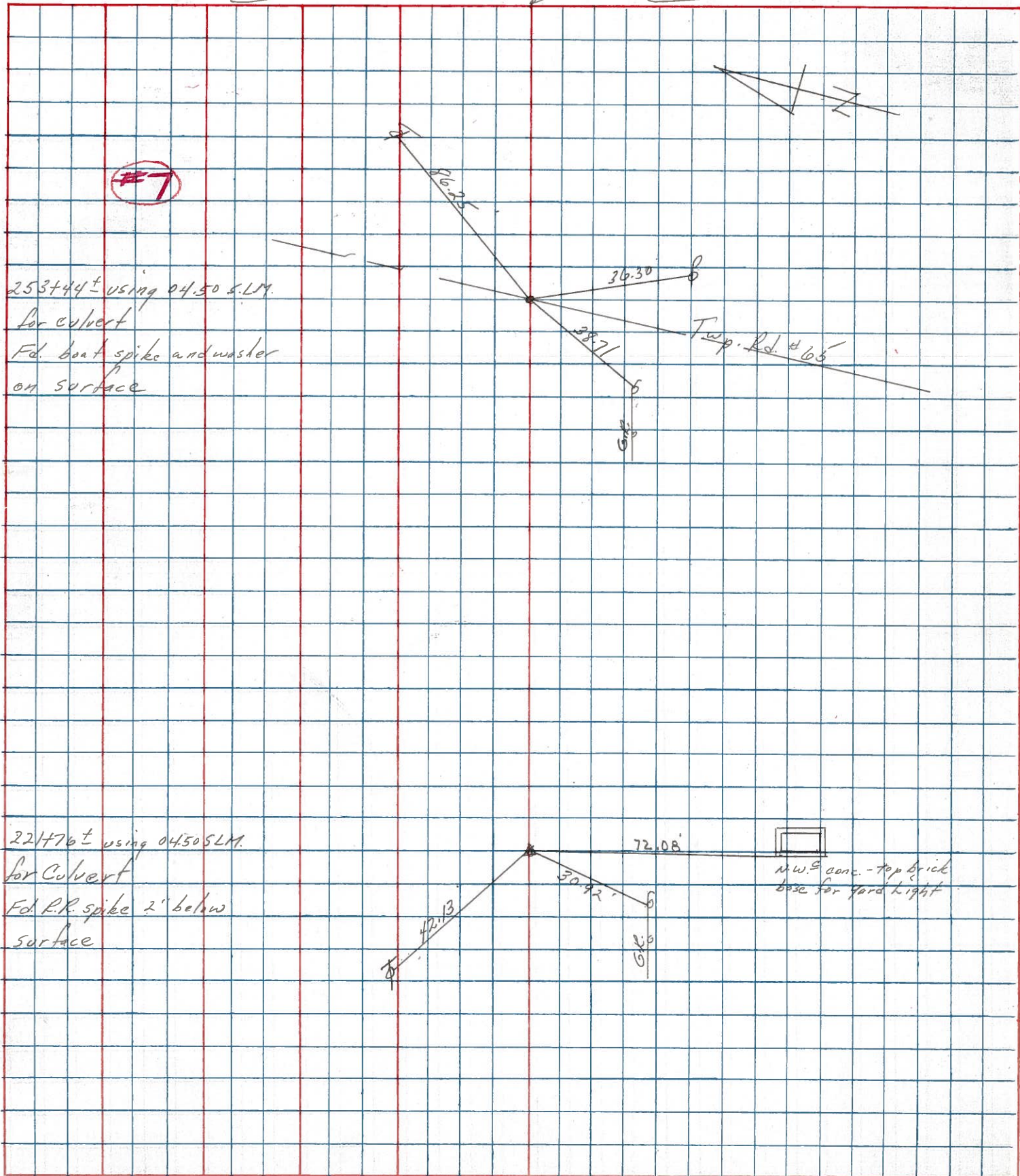
DESCRIPTION Alignment & Ties

LEFT

CENTER LINE

RIGHT

JOB NO.



253+44± using 04.50 S.L.M.
for culvert
Fd. boat spike and washer
on surface

221+76± using 04.50 S.L.M.
for Culvert
Fd. R.R. spike 2' below
surface

Twp. Rd. #65

M.W.S. conc. - top brick
base for yard light

PERSONNEL	TITLE	PERSONNEL	TITLE	COUNTY	DATE
				Serena	10-13-72
				S. R. 12	WEATHER Cool
				SEC. 27 Jackson Twp.	TEMP. 40°
DESCRIPTION	Fosteria Corp. to Sen. Co. Line			JOB NO.	
	LEFT	CENTER LINE	RIGHT		

152+35.57
Fd. small R.R.
spk. on top
on & R/W

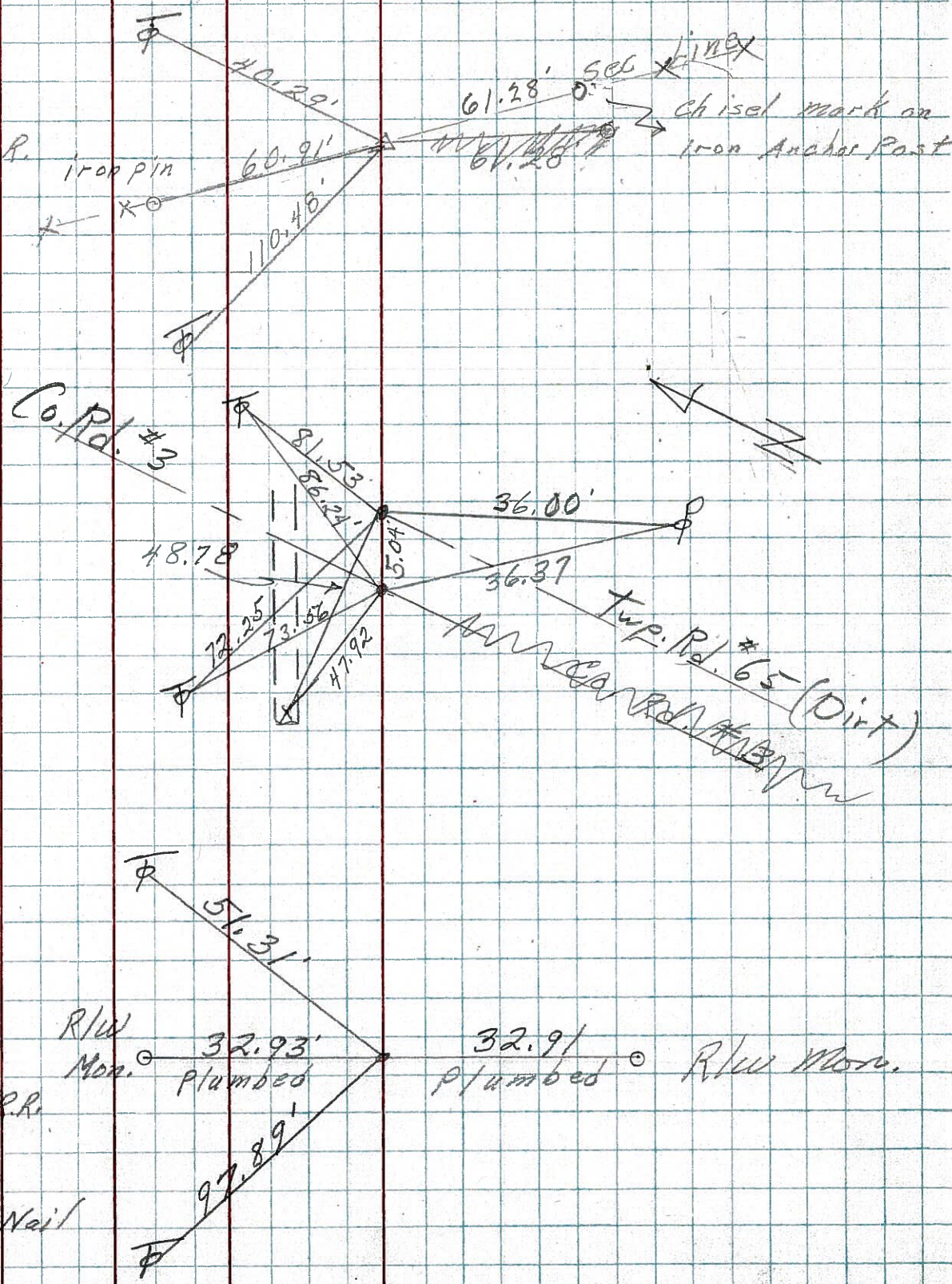
8

Hinge Nail
1" down
P.K. Nail
2" down

7

120+ ?
Fd. small R.R.
spk. on top
on & R/W
Reset P.K. Nail

6



PERSONNEL	TITLE	PERSONNEL	TITLE
ASH			
Cronin			
Ripple			
Lehr			

COUNTY Seneca DATE Oct. 28, '58
Fostoria - Fremont Rd.
 S. R. # 124113 WEATHER Clear
S.H. (I.C.H.) 22 "Fostoria" (pt.)
 SEC. P. F. Q. G. O. TEMP. 55°

DESCRIPTION Ties to Control Points JOB NO. _____
 LEFT CENTER LINE - R/W RIGHT

