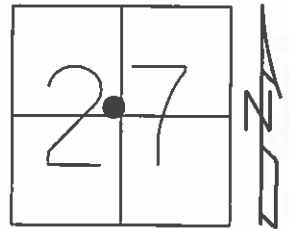


O.D.O.T. DISTRICT 2 SURVEY OFFICE (USE ONLY)

PERSONNEL	REFERENCE NO.	<u>8</u>	SHEET	<u>9</u>	OF	<u>70</u>
NOTES	<u>HARBAUGH</u>	DATE	<u>05-18-12</u>	ROUTE	<u>SR 12</u>	
H.C.	<u>ROUSOS</u>	WEATHER	<u>SUNNY</u>	COUNTY	<u>SENECA</u>	
R.C.	<u>HUSS</u>	TEMP.	<u>60°</u>	TOWNSHIP	<u>JACKSON</u>	
				SECTION	<u>27</u>	
				T	<u>3</u>	R
					<u>N</u>	<u>13</u>
					<u>E</u>	

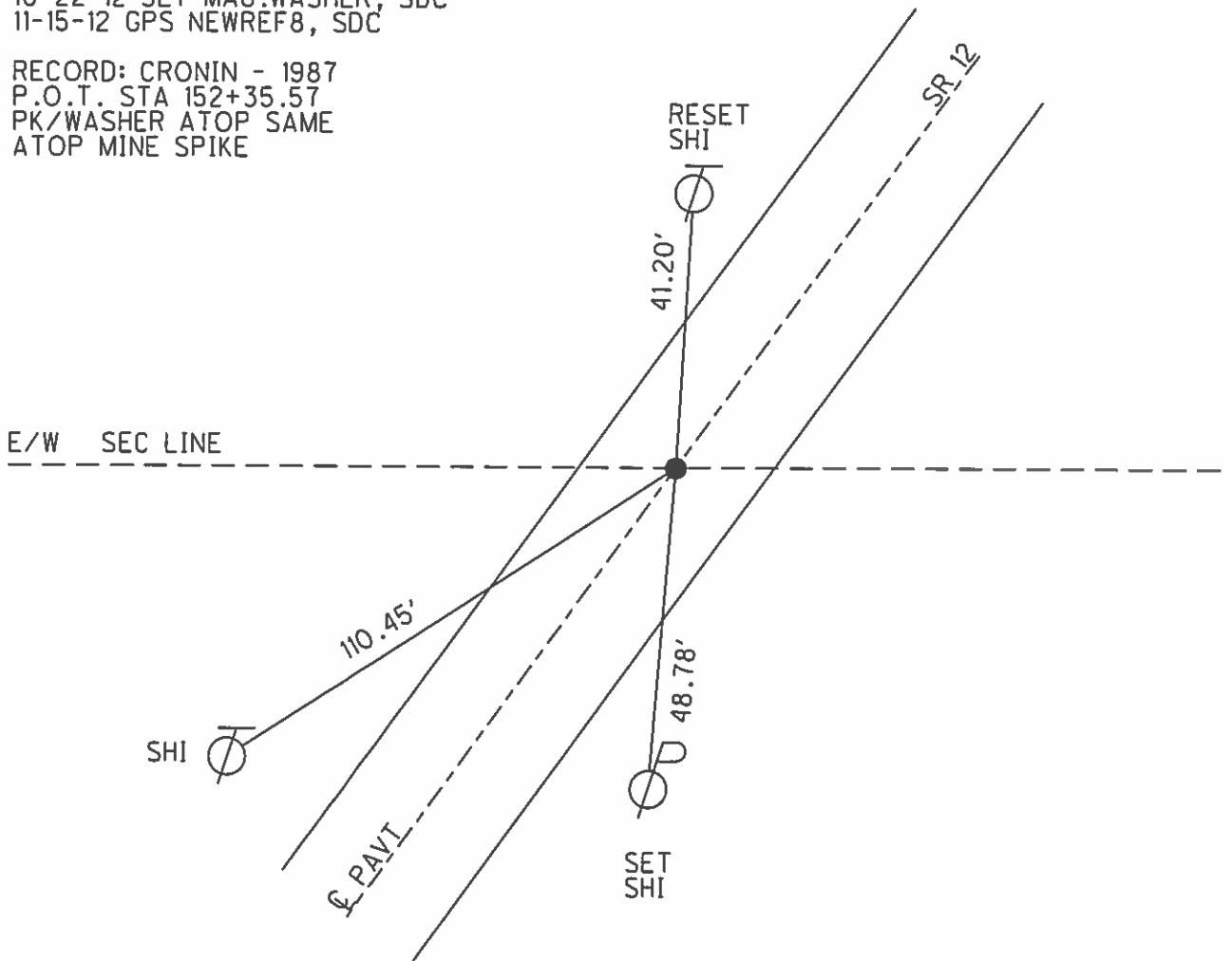
TYPE MONUMENT \_\_\_\_\_ PK/WASHER \_\_\_\_\_  
 ON SURFACE - BELOW \_\_\_\_\_ ON \_\_\_\_\_  
 LEFT -  $\phi$  PAV'T - RIGHT \_\_\_\_\_ ON \_\_\_\_\_  
10.47' TO LT. EDGE PAVEMENT  
 S.L.M. \_\_\_\_\_ 257+46 \_\_\_\_\_



GRID: NORTHING: 555700.976 EASTING: 1733534.890

10-13-99 SET PK/WASHER, SAH  
 05-08-12 FD PK/WASHER, JMH  
 05-31-12 GPS REF8, MC  
 10-22-12 SET MAG.WASHER, SDC  
 11-15-12 GPS NEWREF8, SDC

RECORD: CRONIN - 1987  
 P.O.T. STA 152+35.57  
 PK/WASHER ATOP SAME  
 ATOP MINE SPIKE



O.D.O.T. DISTRICT 2 SURVEY OFFICE

PERSONNEL

REFERENCE NO. 8

SHEET 7 OF 52

NOTES LOEHRKE

H.C. Van Dusen

DATE 8-17-99

ROUTE 12

R.G. Rousos

WEATHER FAIR

COUNTY SENECA

TEMP. +75

TOWNSHIP JACKSON

SECTION 27

T 3 N R 13 E

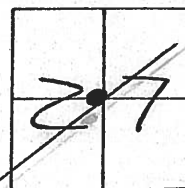
TYPE MONUMENT P.K./WASHER

ON SURFACE - ~~BELOW~~ Yes

~~LEFT - & PAV'T. - RIGHT~~ Yes

10.4 TO RT EDGE PAVEMENT

S.L.M. 256+49



RECORD: CROWIN Notes 1987

P.O.T. Sta 152+35.57

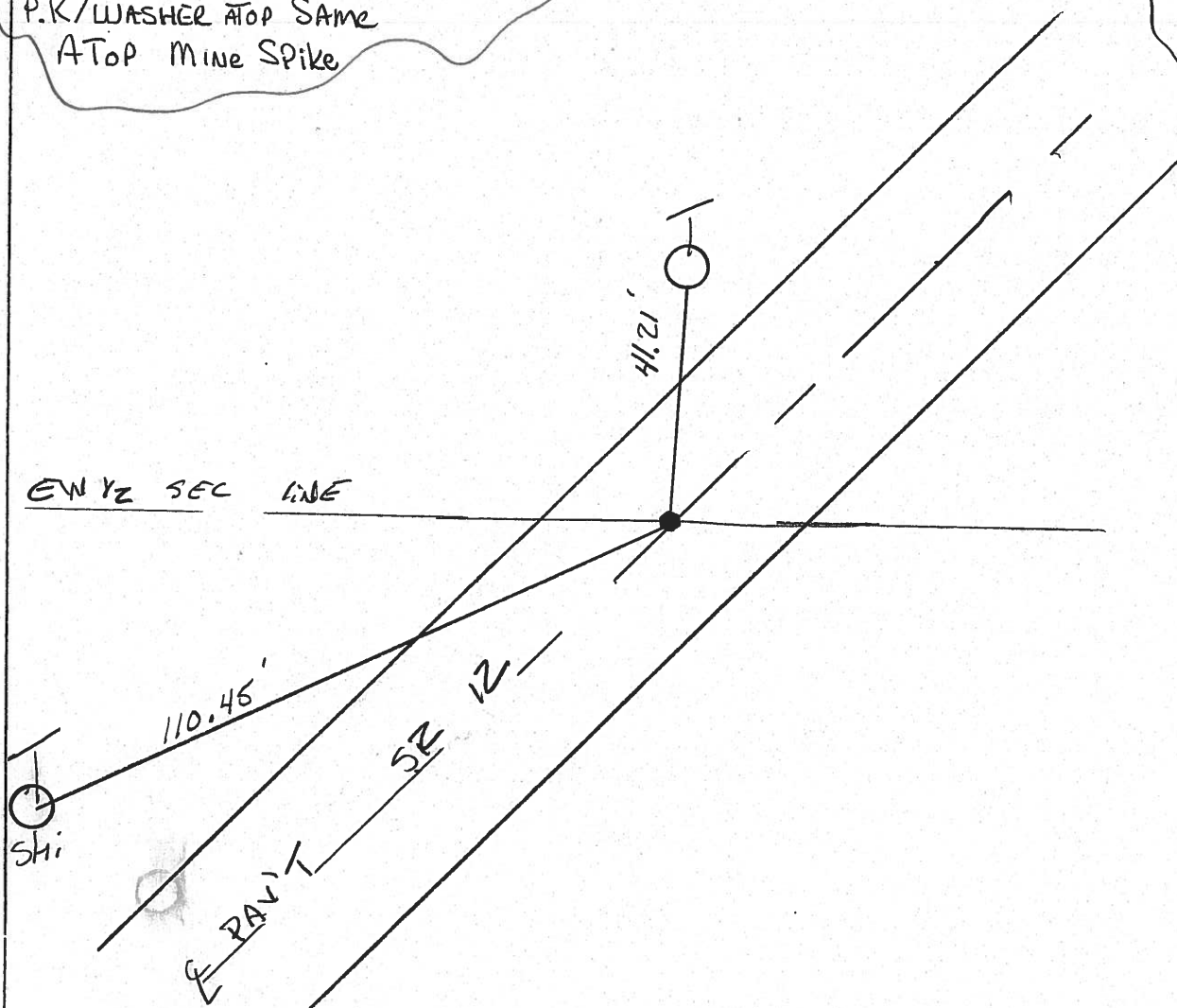
P.K./WASHER ATOP SAME

ATOP Mine Spike

Set PK/W

10-13-99

SAH



# O.D.O.T. DISTRICT 2 SURVEY OFFICE

PERSONNEL

NOTES Cronin

H.C. Ripple

R.C. Geyman

Barbour

REFERENCE NO. 8

DRAWN 1/22/87

DATE 1/09/87

WEATHER overcast

TEMP. 27°

SHEET 7 OF       

ROUTE #12

COUNTY Seneca

TOWNSHIP Jackson

SECTION 27

T 3 N R 13 E

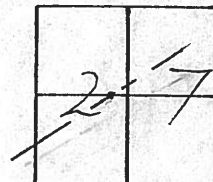
TYPE MONUMENT P.K. & washer

ON SURFACE - BELOW on surface

LEFT - ☉ PAV'T. - RIGHT & Part.

       TO        EDGE PAVEMENT

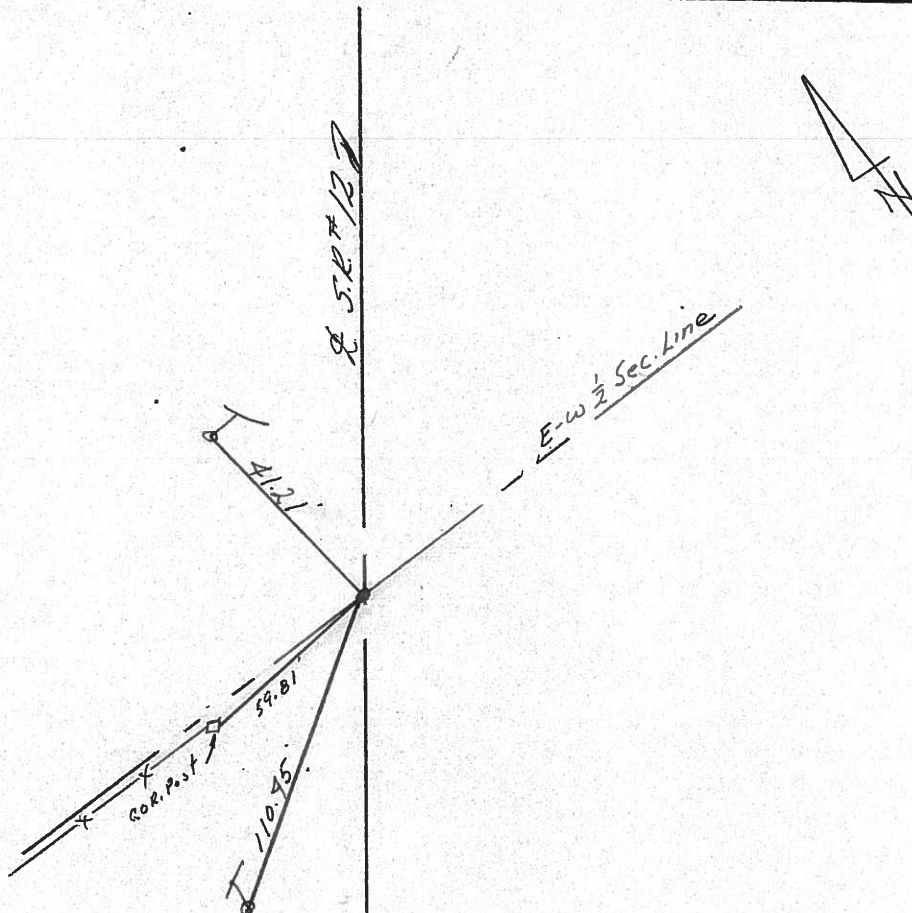
S.L.M.       



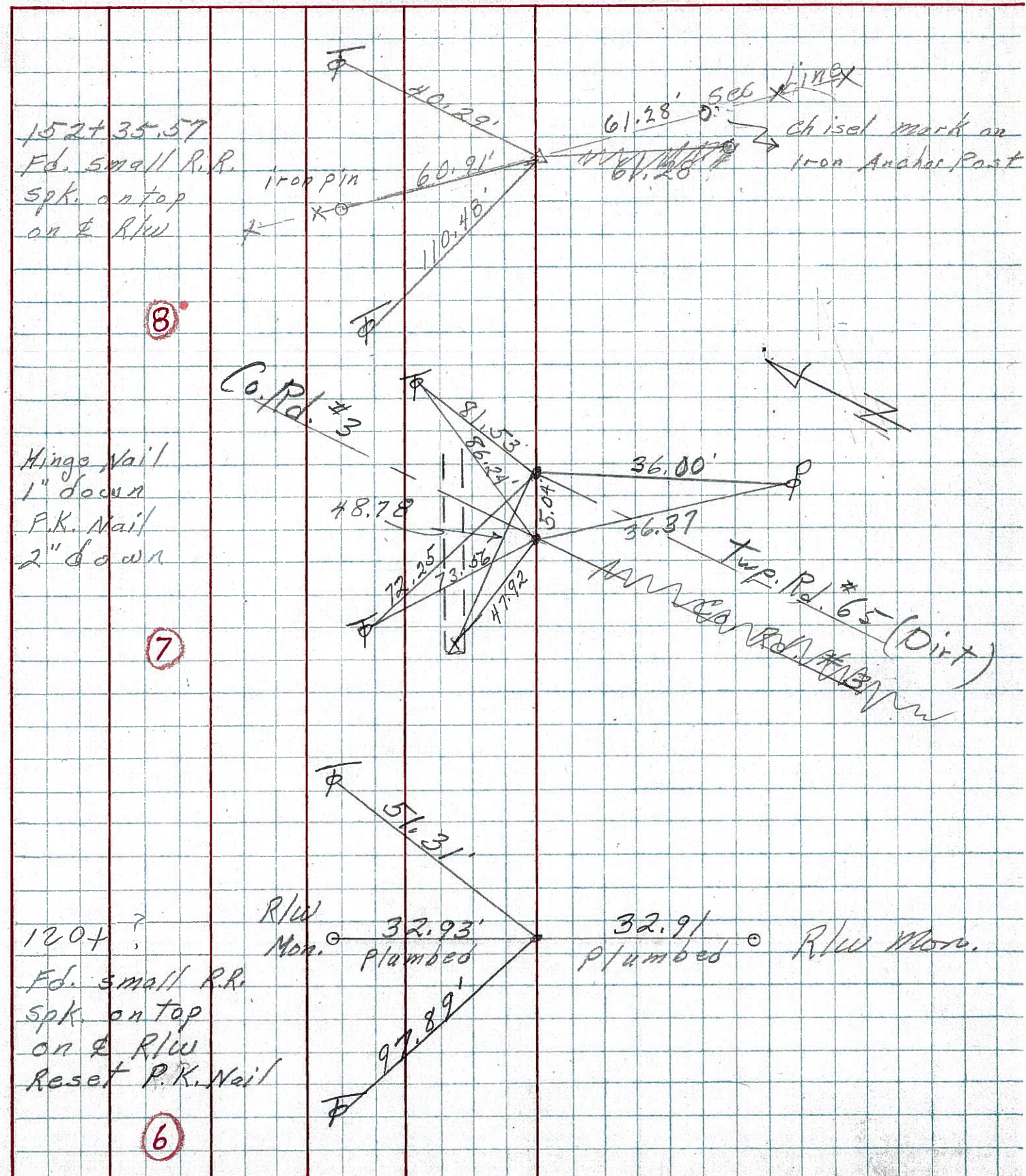
P.O.T.

152+35.57

P.K. & washer atop same  
atop mine spike



PERSONNEL \_\_\_\_\_ TITLE \_\_\_\_\_ PERSONNEL \_\_\_\_\_ TITLE \_\_\_\_\_  
 COUNTY Seneca DATE 10-13-72  
 S. R. 12 WEATHER Cool  
 SEC. 27 Jackson Twp. TEMP. 40°  
 DESCRIPTION Fostoria Corp. to Sen. Co. Line JOB NO. \_\_\_\_\_



PERSONNEL TITLE PERSONNEL TITLE  
 Schneider \_\_\_\_\_  
 Barbour \_\_\_\_\_  
 Redding \_\_\_\_\_  
 Potts \_\_\_\_\_

COUNTY Seneca DATE 10-8-68

S. R. 12 WEATHER Fair

SEC. Fostoria to Seneca Line TEMP. 70

DESCRIPTION Ties for Control Points JOB NO. \_\_\_\_\_

14

277+51.50  
 Ed. spk. on top  
 8057

11

P.I.  
 170+46.39  
 Iron Pin  
 8056

8

152+35.57  
 Ed. spk. on top  
 8055

6

120+00  
 Ed. spk. on top  
 8054

