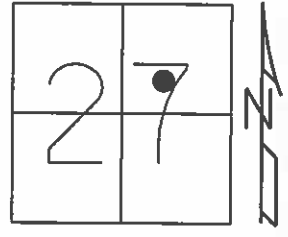


O.D.O.T. DISTRICT 2 SURVEY OFFICE (USE ONLY)

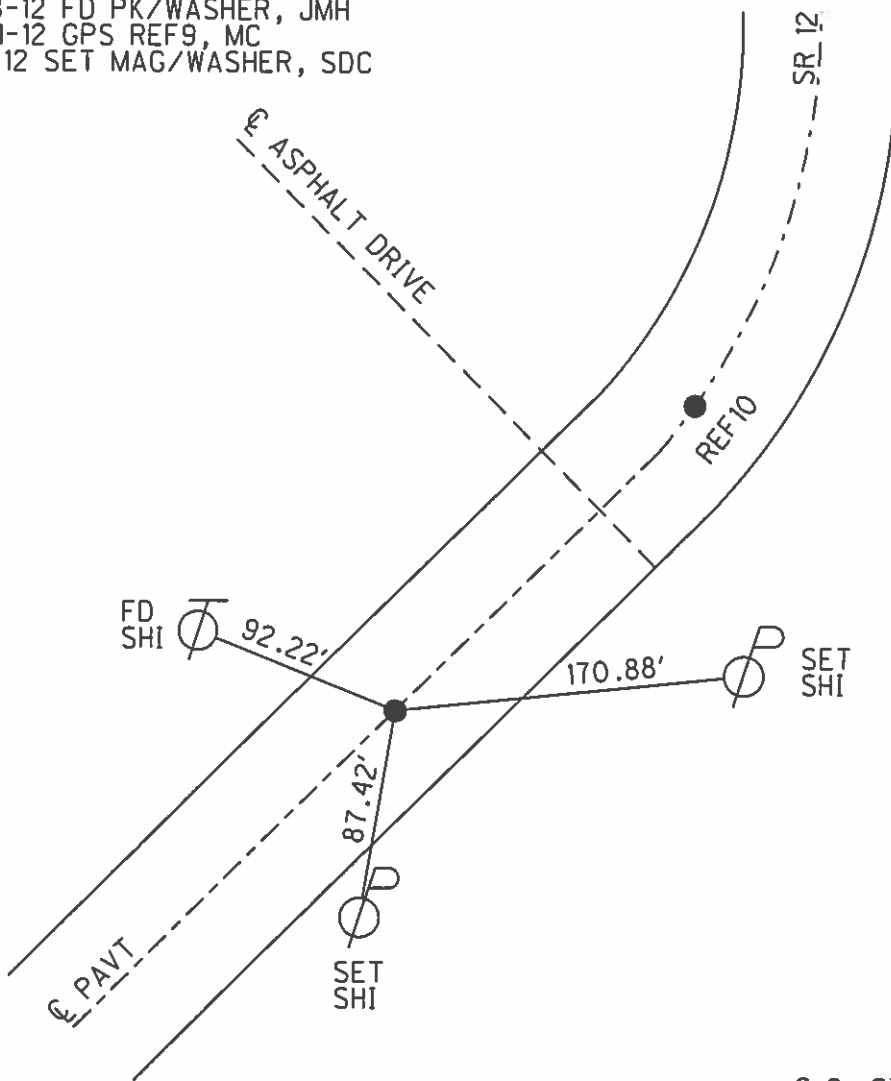
PERSONNEL	REFERENCE NO.	<u>9</u>	SHEET	<u>10</u>	OF	<u>70</u>
NOTES	<u>HARBAUGH</u>	DATE	<u>05-18-12</u>	ROUTE	<u>SR 12</u>	
H.C.	<u>ROUSOS</u>	WEATHER	<u>SUNNY</u>	COUNTY	<u>SENECA</u>	
R.C.	<u>HUSS</u>	TEMP.	<u>60°</u>	TOWNSHIP	<u>JACKSON</u>	
				SECTION	<u>27</u>	
				T. <u>3</u> N	R. <u>13</u> E	

TYPE MONUMENT \_\_\_\_\_ PK/WASHER \_\_\_\_\_  
 ON SURFACE - BELOW \_\_\_\_\_ ON \_\_\_\_\_  
 LEFT - ℄ PAV'T - RIGHT \_\_\_\_\_ ON \_\_\_\_\_  
10.3' TO RT EDGE PAVEMENT  
 S.L.M. \_\_\_\_\_ 269+40 \_\_\_\_\_



GRID: NORTHING: 556341.165 EASTING: 1734542.474

10-13-99 SET PK/WASHER  
 05-18-12 FD PK/WASHER, JMH  
 05-31-12 GPS REF9, MC  
 11-15-12 SET MAG/WASHER, SDC



RECORD: CROININ - 1987  
 STA 269+11  
 S.C. STA 253+29.05, RR SPIKE  
 SET BY OTHERS ATOP PK/WASHER  
 ATOP MINE SPIKE

# O.D.O.T. DISTRICT 2 SURVEY OFFICE

PERSONNEL

REFERENCE NO. 9 & 10 SHEET 8 OF 52

NOTES LOEHRKE

H.C. VAN DUSEN

R.C. ROUSOS

DATE 8-17-99

WEATHER FAIR

TEMP. +76

ROUTE S.R. 12

COUNTY Seneca

TOWNSHIP Jackson

SECTION 27

T 3 N R 13 E

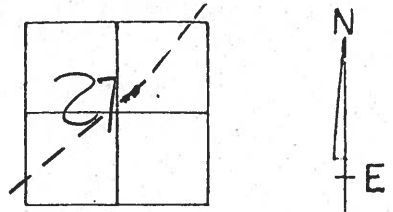
TYPE MONUMENT P.K. & WASHERS

ON SURFACE - BELOW 2" Below ON

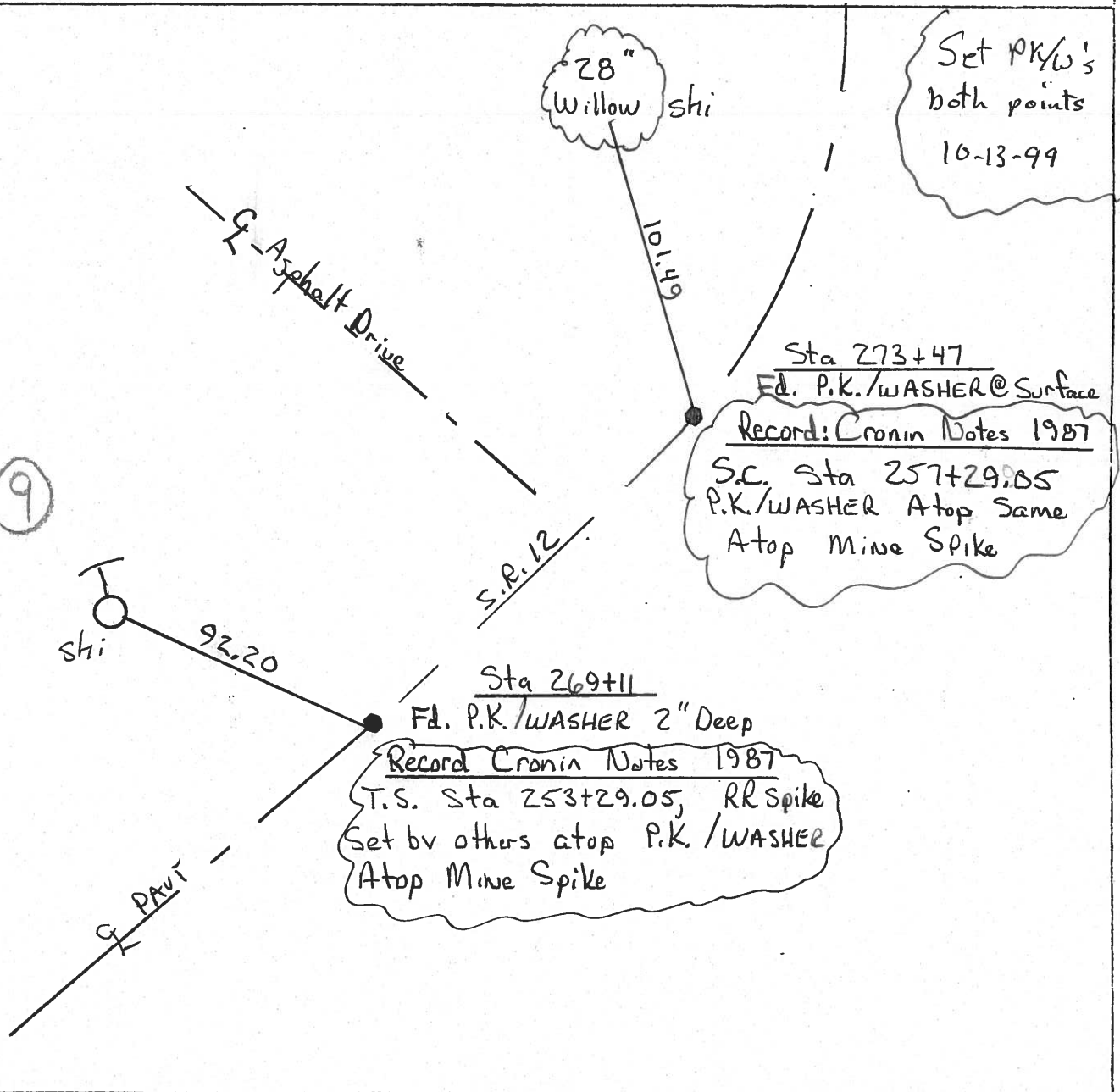
LEFT - PAV'T. - RIGHT Yes

TO EDGE PAVEMENT

S.L.M. 269+11 & 273+47



9



O.D.O.T. DISTRICT 2 SURVEY OFFICE

PERSONNEL

REFERENCE NO. 9

SHEET 8 OF     

NOTES Cronin

H.C. Ripple

R.C. Geyman

Barbour

DATE 1/22/87

WEATHER overcast

TEMP. 27°

ROUTE #12

COUNTY Seneca

TOWNSHIP Jackson

SECTION 27

T 3 N R 13 E

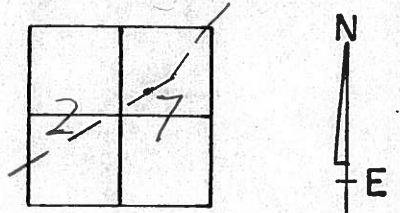
TYPE MONUMENT R.R. spike

ON SURFACE - BELOW on surface

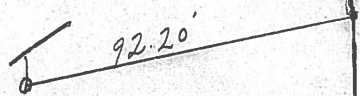
LEFT - € PAV'T. - RIGHT £ Pav't.

     TO      EDGE PAVEMENT

S.L.M.     



S.C.



T.S.  
253+2905  
R.R. spike set by others  
atop P.K. & washer  
atop mine spike??

S.S. #12

PERSONNEL TITLE PERSONNEL TITLE COUNTY Seneca DATE 10-13-72  
 S. R. 12 WEATHER Cool  
 SEC. 27 Jackson Twp. TEMP. 40°  
 DESCRIPTION Eastoria Corp. to Sand. Co. Line JOB NO. \_\_\_\_\_

