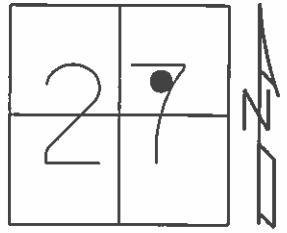


O.D.O.T. DISTRICT 2 SURVEY OFFICE (USE ONLY)

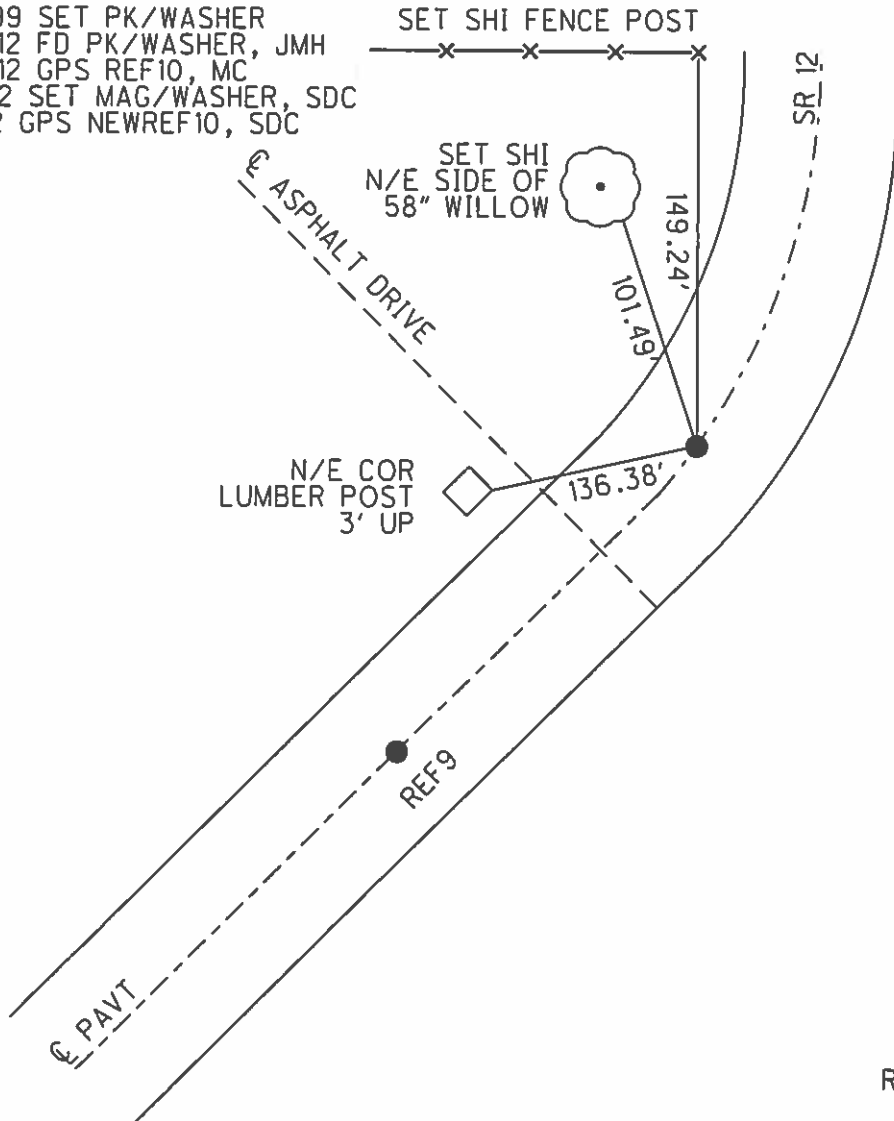
PERSONNEL	REFERENCE NO. <u>10</u>	SHEET <u>11</u> OF <u>70</u>
NOTES <u>HARBAUGH</u>	DATE <u>05-18-12</u>	ROUTE <u>SR 12</u>
H.C. <u>ROUSOS</u>	WEATHER <u>SUNNY</u>	COUNTY <u>SENECA</u>
R.C. <u>HUSS</u>	TEMP. <u>60°</u>	TOWNSHIP <u>JACKSON</u>
		SECTION <u>27</u>
		T <u>3</u> N R <u>13</u> E

TYPE MONUMENT PK/WASHER
 ON SURFACE - BELOW ON
 LEFT - Q PAV'T - RIGHT ON
10.1' TO LT EDGE PAVEMENT
 S.L.M. 273+42



GRID: NORTHING: 556571.309 EASTING: 1734869.549

- 10-13-99 SET PK/WASHER
- 05-18-12 FD PK/WASHER, JMH
- 05-31-12 GPS REF10, MC
- 10-21-12 SET MAG/WASHER, SDC
- 11-15-12 GPS NEWREF10, SDC



RECORD: CROININ - 1987
 STA 273+47
 S.C. STA 257+29.05
 PK/WASHER ATOP SAME
 ATOP MINE SPIKE

O.D.O.T. DISTRICT 2 SURVEY OFFICE

PERSONNEL

REFERENCE NO. 9 & 10 SHEET 8 OF 52

NOTES LOEHRKE

H.C. VAN DUSEN

R.C. ROUSOS

DATE 8-17-99

WEATHER FAIR

TEMP. +76

ROUTE S.R. 12

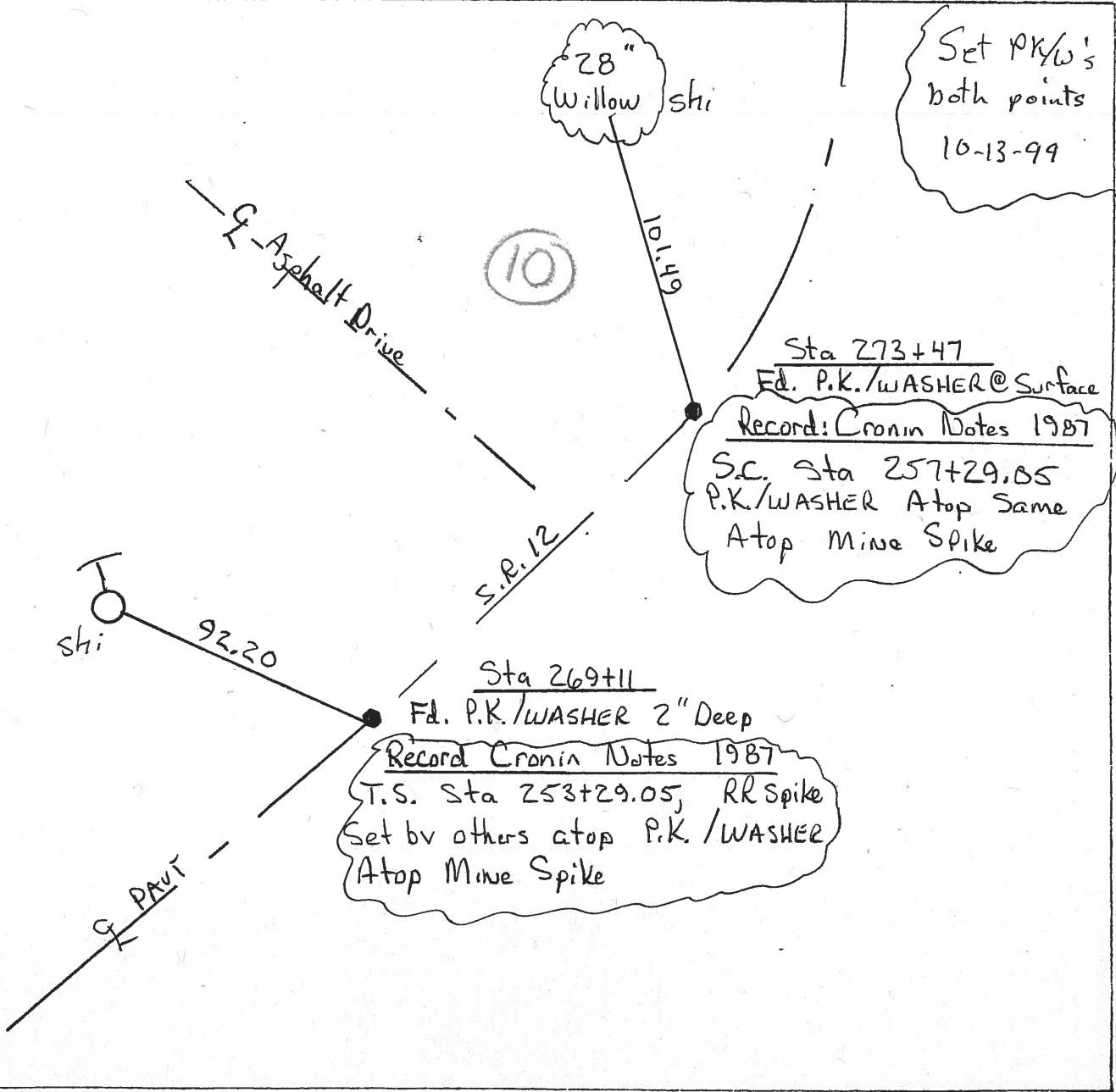
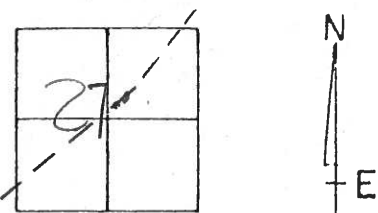
COUNTY Seneca

TOWNSHIP Jackson

SECTION 27

T 3 N R 13 E

TYPE MONUMENT P.K. & WASHERS
 ON SURFACE - BELOW 2" Below, ON
 LEFT - & PART - RIGHT Yes
 TO EDGE PAVEMENT
 S.L.M. 269+11 & 273+47



O.D.O.T. DISTRICT 2 SURVEY OFFICE

PERSONNEL

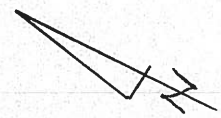
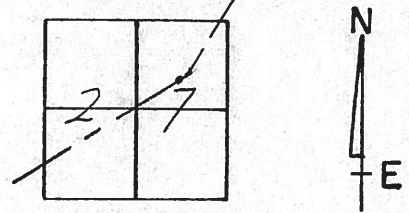
NOTES Cronin
 H.C. Ripple
 R.G. Geyman
Barbour

REFERENCE NO. 10
 DRAWN 1/22/87
 DATE 1/09/87
 WEATHER overcast
 TEMP. 27°

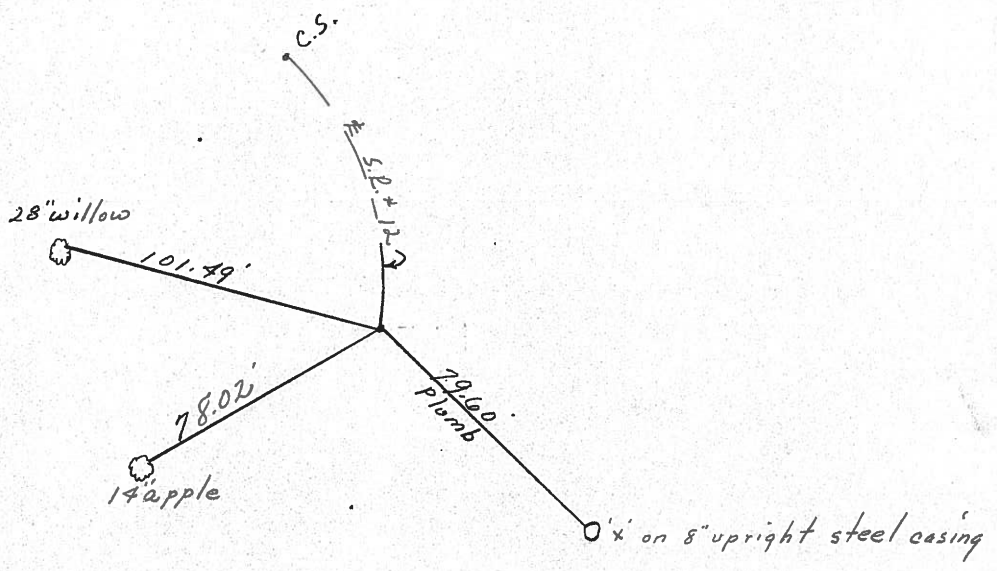
SHEET 9 OF

ROUTE #12
 COUNTY Seneca
 TOWNSHIP Jackson
 SECTION 27
T3 N R 13 E

TYPE MONUMENT P.K. & washer
 ON SURFACE - BELOW on surface
 LEFT - & PAV'T. - RIGHT & Pavt.
 TO EDGE PAVEMENT
 S.L.M.



S.C.
257+29.05
P.K. & washer atop same
atop mine spike



PERSONNEL TITLE PERSONNEL TITLE

COUNTY Seneca DATE 10-13-72

S. R. 12 WEATHER Cool

SEC. 27 Jackson Twp. TEMP. 40°

DESCRIPTION Fostoria Corp. to Sand. Co. Line JOB NO.

LEFT CENTER LINE RIGHT

