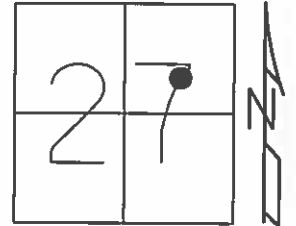


O.D.O.T. DISTRICT 2 SURVEY OFFICE (USE ONLY)

PERSONNEL	REFERENCE NO.	<u>11</u>	SHEET	<u>12</u>	OF	<u>70</u>
NOTES	<u>HARBAUGH</u>	DATE	<u>05-31-12</u>	ROUTE	<u>SR 12</u>	
H.C.	<u>CANTERBURY</u>	WEATHER	<u>CLOUDY</u>	COUNTY	<u>SENECA</u>	
R.C.	<u>COUCHER</u>	TEMP.	<u>67°</u>	TOWNSHIP	<u>JACKSON</u>	
				SECTION	<u>27</u>	
				T	<u>3</u>	R
					<u>N</u>	<u>13</u>
					<u>E</u>	

TYPE MONUMENT IRON PIN "  
 ON SURFACE - BELOW ON  
 LEFT - ℄ PAV'T - RIGHT 6.6'  
51.08' TO RT EDGE PAVEMENT BERM  
 S.L.M. CALC. 275+58.92

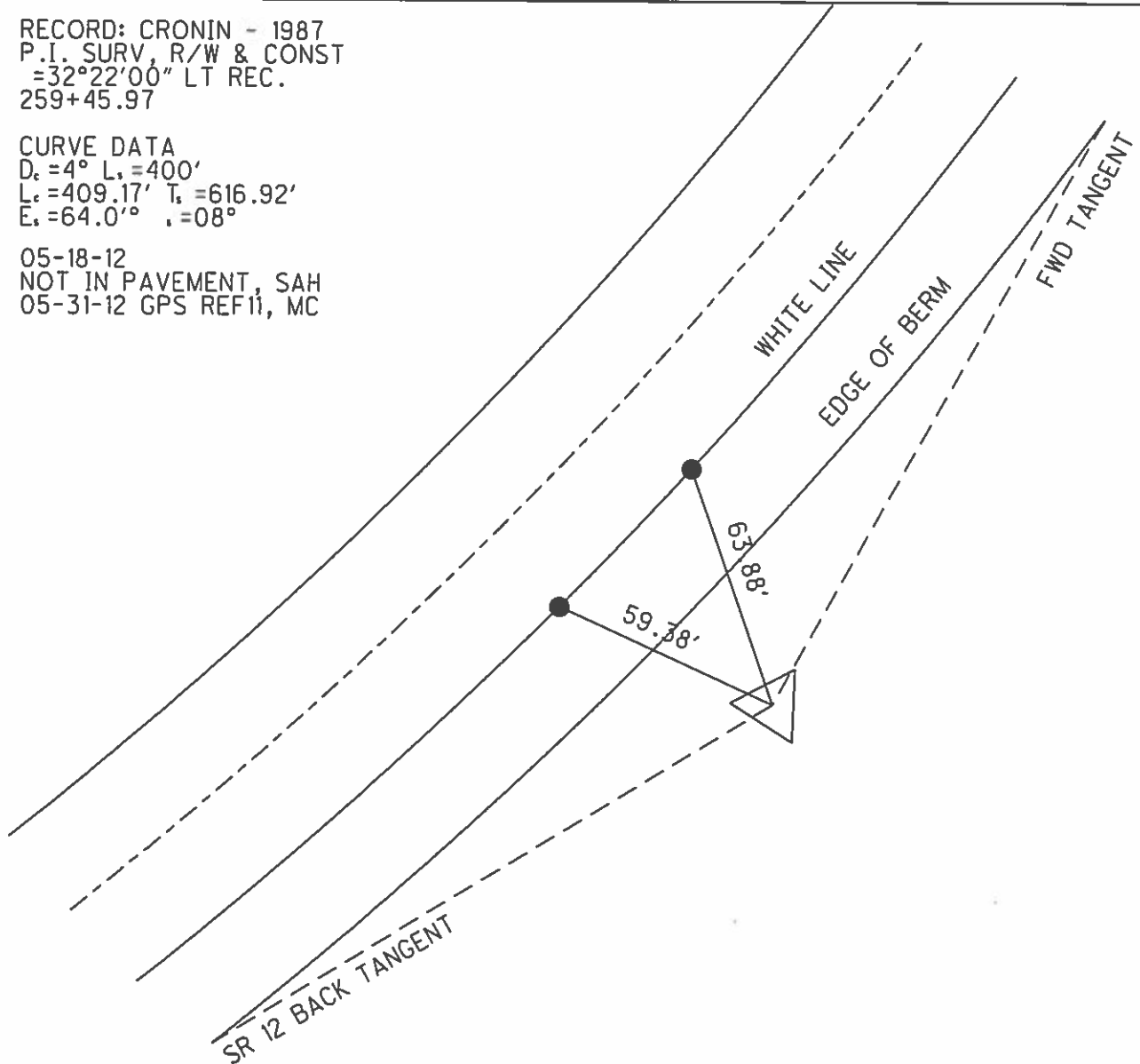


GRID: NORTHING: 556672.232 EASTING: 1735063.012

RECORD: CRONIN - 1987  
 P.I. SURV, R/W & CONST  
 =32°22'00" LT REC.  
 259+45.97

CURVE DATA  
 D<sub>c</sub> = 4° L<sub>c</sub> = 400'  
 L<sub>c</sub> = 409.17' T<sub>c</sub> = 616.92'  
 E<sub>c</sub> = 64.0'° Δ = 08°

05-18-12  
 NOT IN PAVEMENT, SAH  
 05-31-12 GPS REF 11, MC



O.D.O.T. DISTRICT 2 SURVEY OFFICE

PERSONNEL

REFERENCE NO. 11

SHEET 9 OF 52

NOTES hochrke

H.C. Huss

R.C. hochrke

DATE 4-12-00

WEATHER Bad

TEMP. +42°

ROUTE S.R. 12

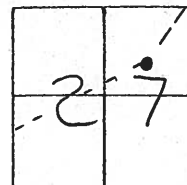
COUNTY Seneca

TOWNSHIP Jackson

SECTION 27

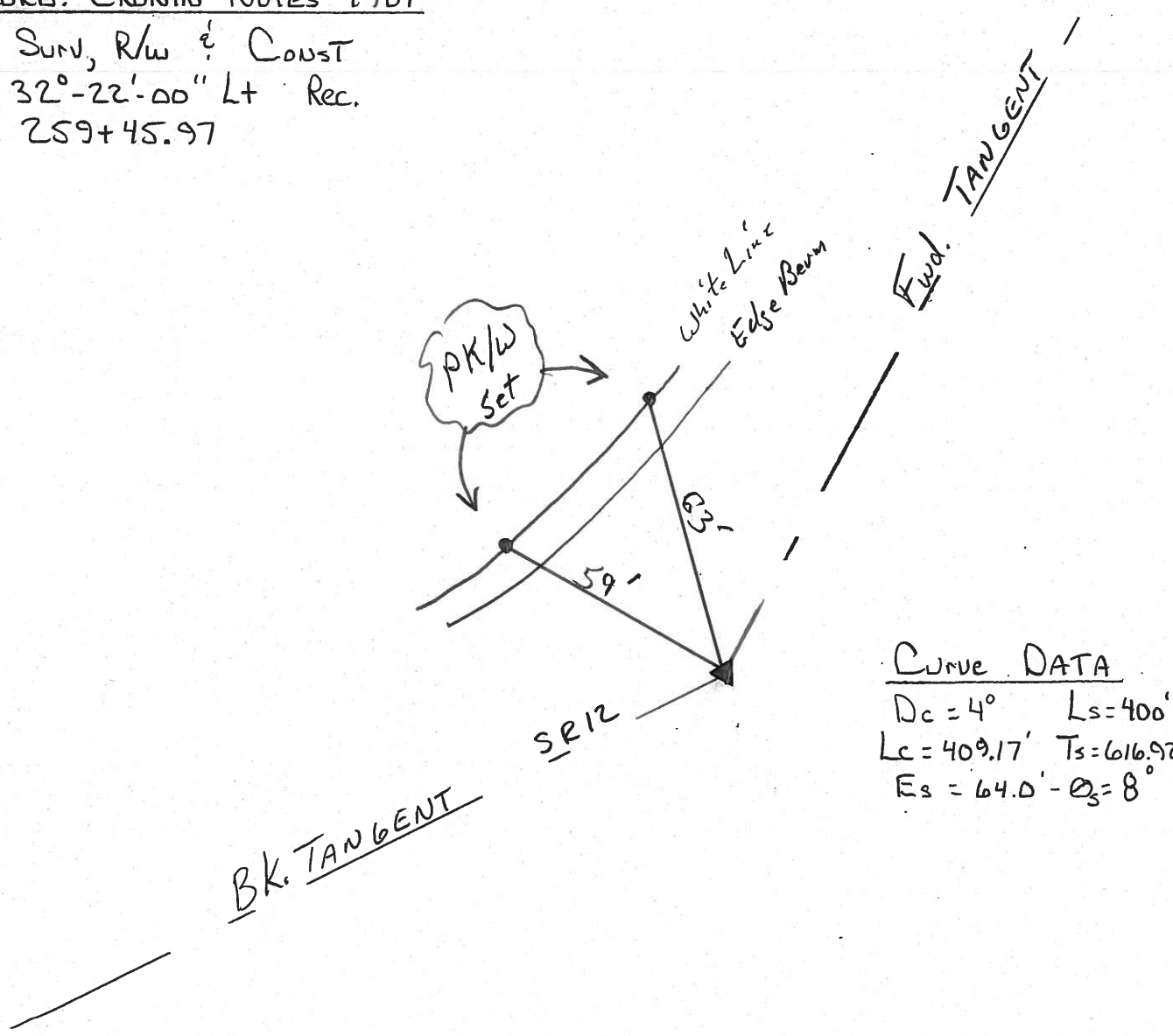
T3 N R 13 E

TYPE MONUMENT Iron Pin 7/8"  
 ON SURFACE - ~~BELOW~~ ON Surface - GROUND  
~~LEFT~~ - PAV'T. - RIGHT 64' Rt  
TO EDGE PAVEMENT  
 S.L.M. \_\_\_\_\_



RECORD: CRONIN NOTES 1987

P.I. SUN, R/W & CONST  
 $\Delta = 32^\circ - 22' - 00''$  Lt Rec.  
259+45.97



CURVE DATA  
 $D_c = 4^\circ$   $L_s = 400'$   
 $L_c = 409.17'$   $T_s = 616.92'$   
 $E_s = 64.0' - \theta_s = 8^\circ$

# O.D.O.T. DISTRICT 2 SURVEY OFFICE

PERSONNEL

NOTES Cronin  
 H.C. Ripple  
 R.G. Geyman  
Barbour

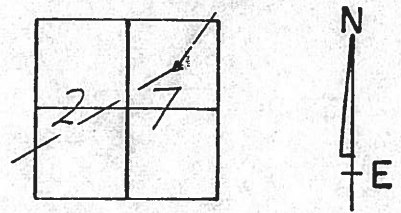
REFERENCE NO. 11

DRAWN 1/22/87  
 DATE 1/09/87  
 WEATHER overcast  
 TEMP. 27°

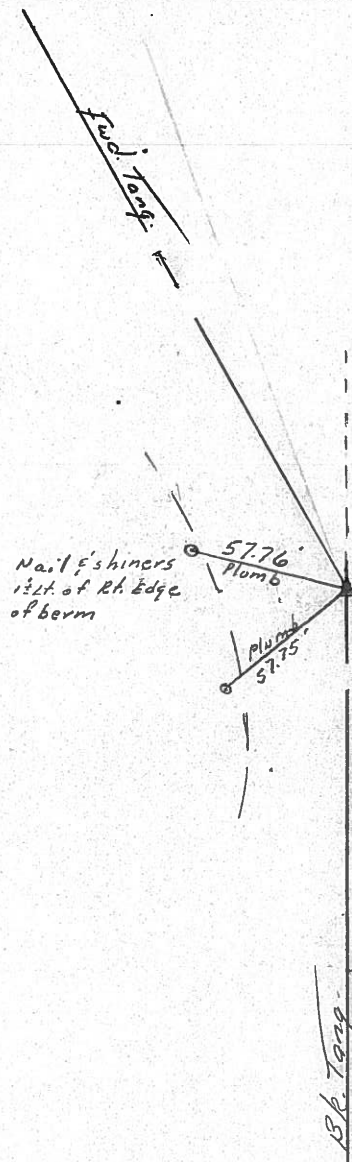
SHEET 10 OF     

ROUTE #12  
 COUNTY Seneca  
 TOWNSHIP Jackson  
 SECTION 27  
T 3 N R 13 E

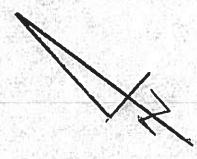
TYPE MONUMENT Iron Pin  
 ON SURFACE - BELOW on surface  
 LEFT - ℄ PAV'T. - RIGHT 64' Lt. & Pavt.  
     TO      EDGE PAVEMENT  
 S.L.M.     



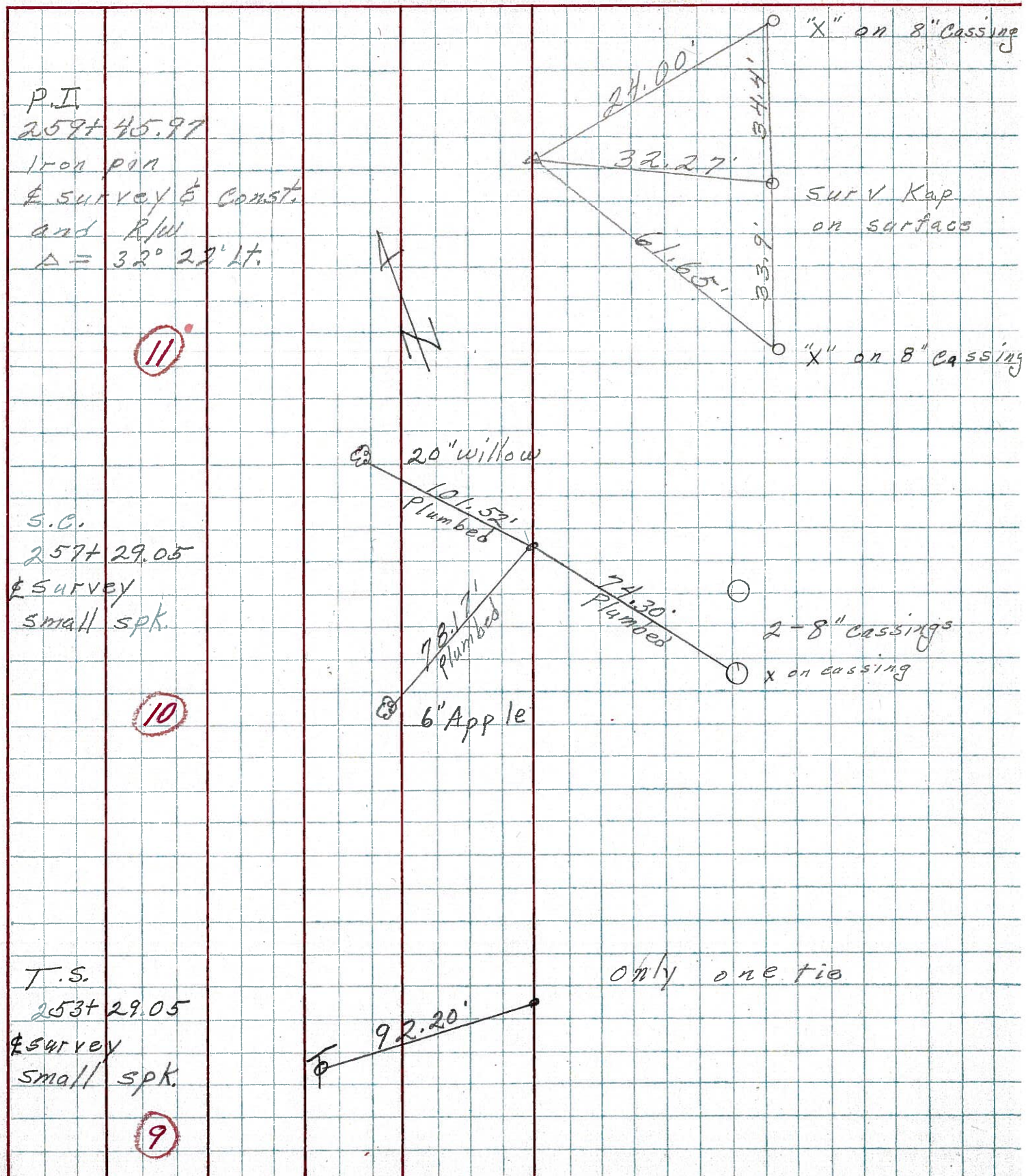
P.I. Sur; R/W & Const.  
Δ = 32°22'00" Lt. Rec.  
2594 45.97



Curve Data  
Dc = 4° Ls = 400  
Lc = 409.17 - Ts = 616.92  
Es = 64.0 - Os = 8°



PERSONNEL	TITLE	PERSONNEL	TITLE	COUNTY	DATE
				Seneca	10-13-72
				S. R. 12	WEATHER Cool
				SEC. 27 Jackson Twp.	TEMP. 40°
DESCRIPTION <u>Fortoria Corp. to Sand Co. Line</u>				JOB NO.	
LEFT		CENTER LINE		RIGHT	



only one tie

PERSONNEL TITLE PERSONNEL TITLE

COUNTY Seneca DATE 10-8-68

Schneider  
Barbour  
Redding  
Potts

S. R. 12 WEATHER Fair

SEC. Fosteria to San Co. Line TEMP. 70

DESCRIPTION Ties for Control Points

JOB NO.

LEFT CENTER LINE RIGHT

14

277+51.50  
Fd. Spk. on top  
8057

11

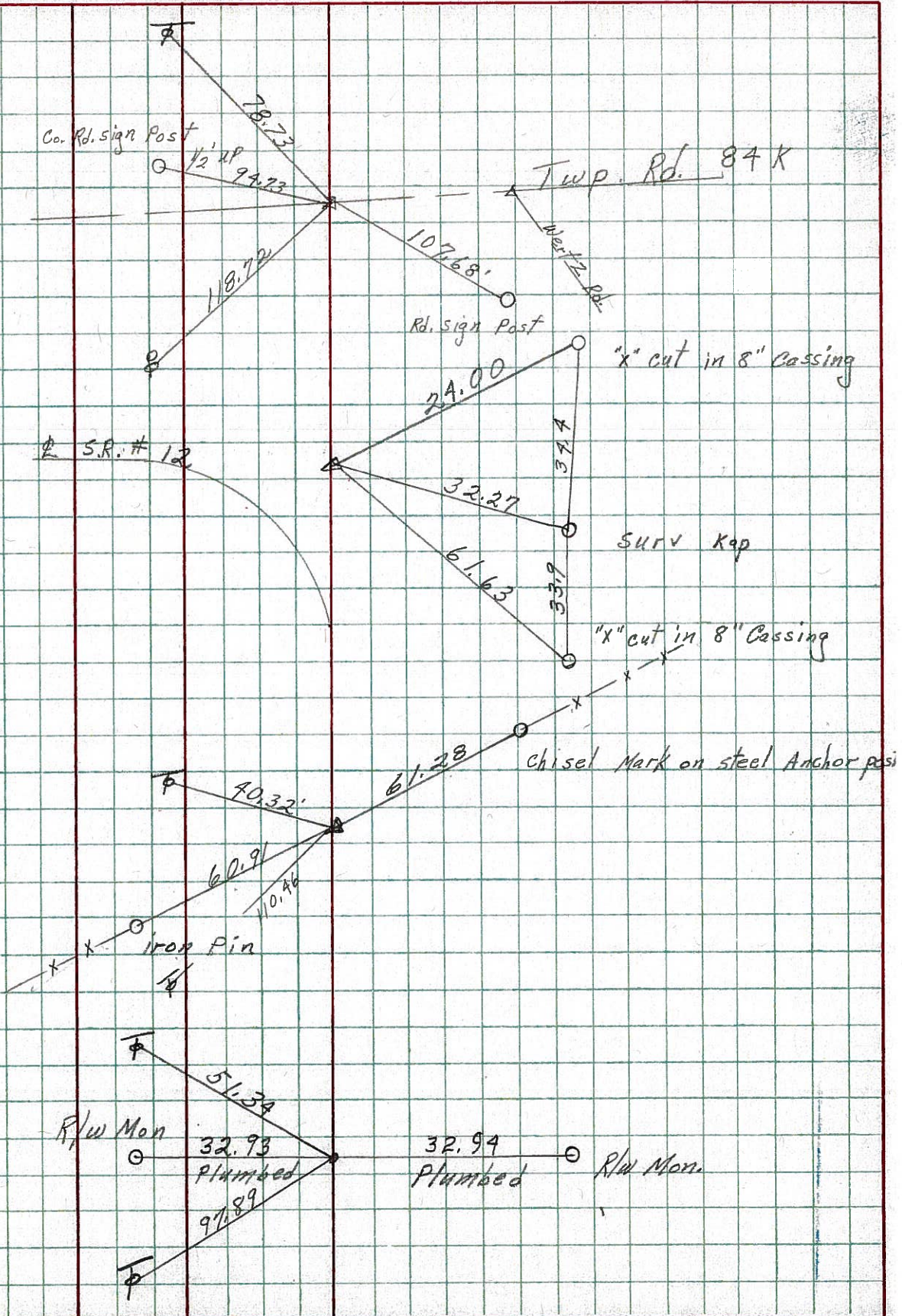
P.I.  
170+46.39  
Iron Pin  
8056

8

152+35.57  
Fd. Spk on top  
8055

6

120+00  
Fd. Spk. on top  
8054



PERSONNEL TITLE PERSONNEL TITLE

COUNTY Seneca DATE

S. R. 12-113 WEATHER

SEC. \_\_\_\_\_ TEMP. \_\_\_\_\_

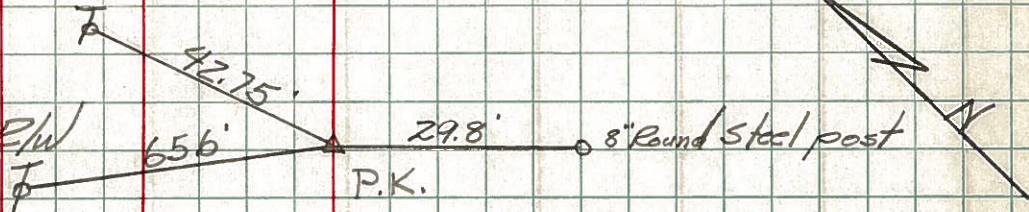
DESCRIPTION LEFT CENTER LINE RIGHT JOB NO.

Sta. 171+26.99

P.T.

Iron pin on  $\frac{1}{2}$  of R/W

#426

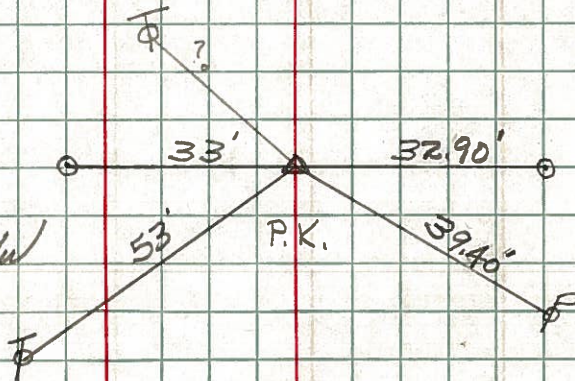


Sta. 199+93.44

P.C.

Iron pin on  $\frac{1}{2}$  of R/W

#427



Sta. 202+25.31

P.I.

Iron pin on  $\frac{1}{2}$  of R/W

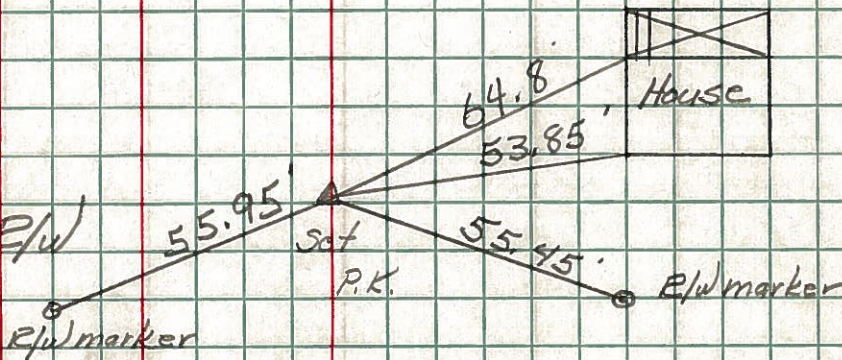
#428



Sta. 216+96

Iron pin on  $\frac{1}{2}$  of R/W

#429



Sta. 226+96

Iron pin on  $\frac{1}{2}$  of R/W

#430

