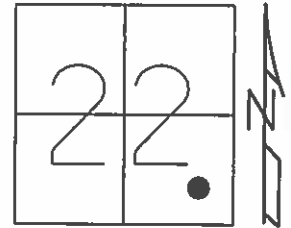


O.D.O.T. DISTRICT 2 SURVEY OFFICE (USE ONLY)

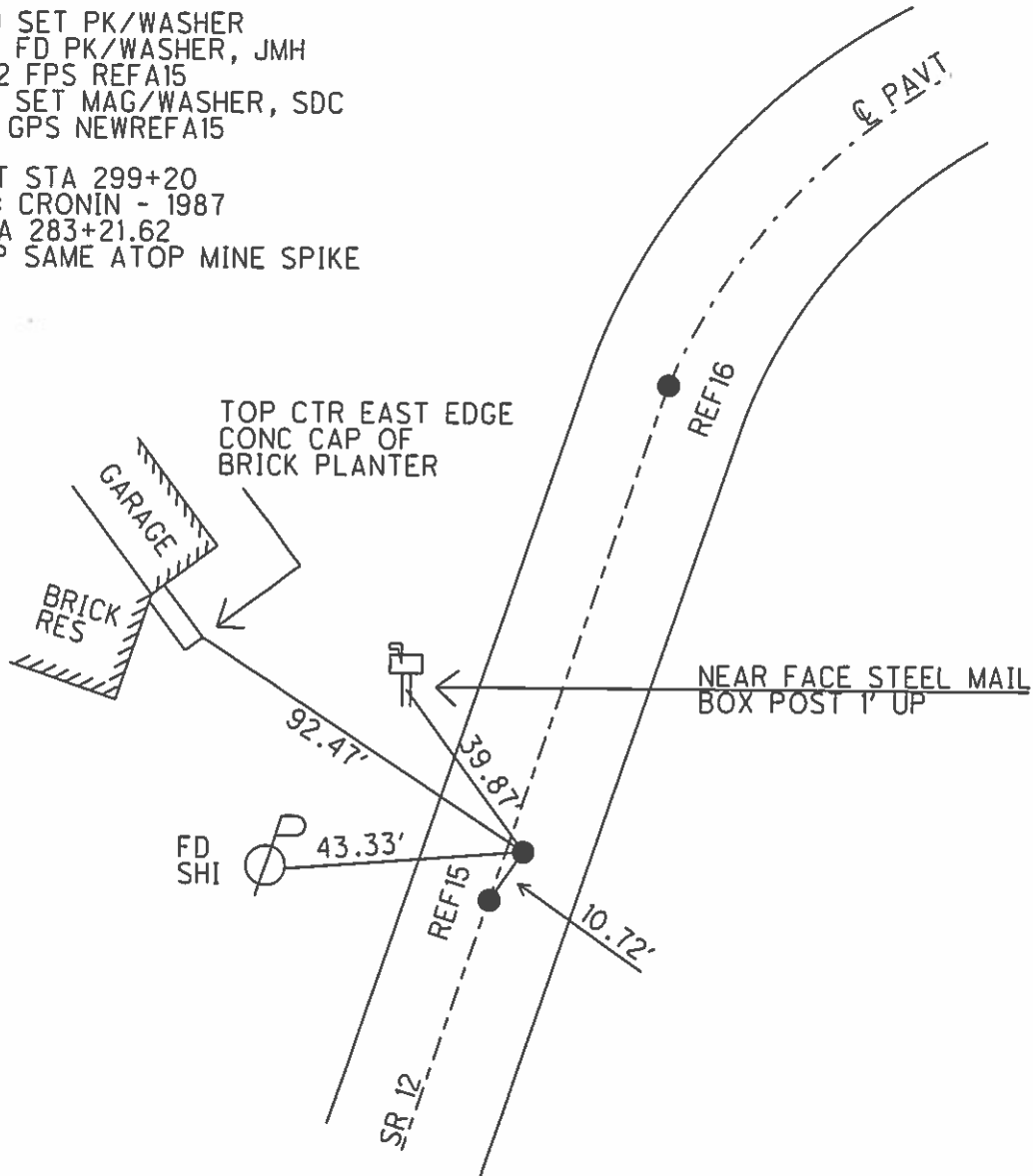
PERSONNEL	REFERENCE NO.	15-A	SHEET	17	OF	70
NOTES	HARBAUGH	DATE	05-18-12	ROUTE	SR 12	
H.C.	ROUSOS	WEATHER	SUNNY	COUNTY	SENECA	
R.C.	HUSS	TEMP.	60°	TOWNSHIP	JACKSON	
				SECTION	22	
				T	3	N
				R	13	E

TYPE MONUMENT \_\_\_\_\_ PK/WASHER \_\_\_\_\_  
 ON SURFACE - BELOW \_\_\_\_\_ ON \_\_\_\_\_  
 LEFT -  $\frac{1}{4}$  PAV'T - RIGHT \_\_\_\_\_ 2.4' \_\_\_\_\_  
 7.65' TO RT EDGE PAVEMENT  
 S.L.M. \_\_\_\_\_ 299+20 \_\_\_\_\_  
 GRID: NORTHING: 558834.323 EASTING: 1736081.363



10-13-99 SET PK/WASHER  
 05-18-12 FD PK/WASHER, JMH  
 06-04-12 FPS REFA15  
 10-22-12 SET MAG/WASHER, SDC  
 11-05-12 GPS NEWREFA15

PROJECT STA 299+20  
 RECORD: CRONIN - 1987  
 T.S. STA 283+21.62  
 PK ATOP SAME ATOP MINE SPIKE



O.D.O.T. DISTRICT 2 SURVEY OFFICE

PERSONNEL

REFERENCE NO. 15616

SHEET 12 OF 52

NOTES LOEHRYE

H.C. VAN DUSEN

R.C. ROUSOS

DATE 8-17-99

WEATHER FAIR

TEMP. +80

ROUTE S.R. 12

COUNTY Seneca

TOWNSHIP Jackson

SECTION 22

T3 N R 13 E

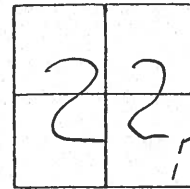
TYPE MONUMENT Set P.K./WASHER

ON SURFACE - ~~BELOW~~ Yes

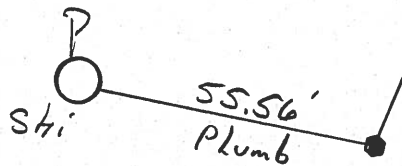
LEFT-☉ PAV'T. - RIGHT \_\_\_\_\_

TO \_\_\_\_\_ EDGE PAVEMENT

S.L.M. 299+20 303+17

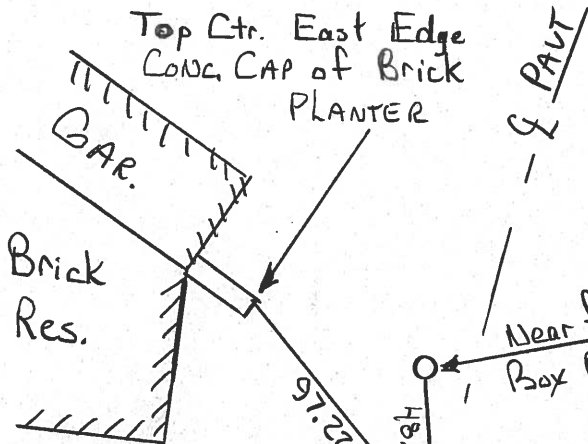


*Set PK/W's  
both points  
10-13-99*



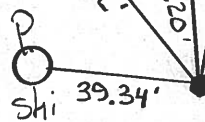
S.R. 12

Project Sta 303+17  
Fd. Mine Spike 2" Deep  
Record: CROWIN Notes 1987  
S.C. 287+21.62  
P.K./WASHER Atop Mine Spike



Near face Steel MAIL  
Box Post 1' up

(15)



Project Sta 299+20  
Fd. P.K./WASHER @ Surface  
Record: CROWIN Notes 1987  
T.S. Sta 283+21.62  
P.K. Atop Same Atop Mine Spike

# O.D.O.T. DISTRICT 2 SURVEY OFFICE

PERSONNEL

REFERENCE NO. 15

SHEET 14 OF     

NOTES Cronin

DRAWN 1/27/87

H.C. Ripple

DATE 5/06/87

R.C. Geyman

WEATHER sonny

Barbour

TEMP. 55°

ROUTE #12

COUNTY Seneca

TOWNSHIP Jackson

SECTION #22

T 3 N R 13 E

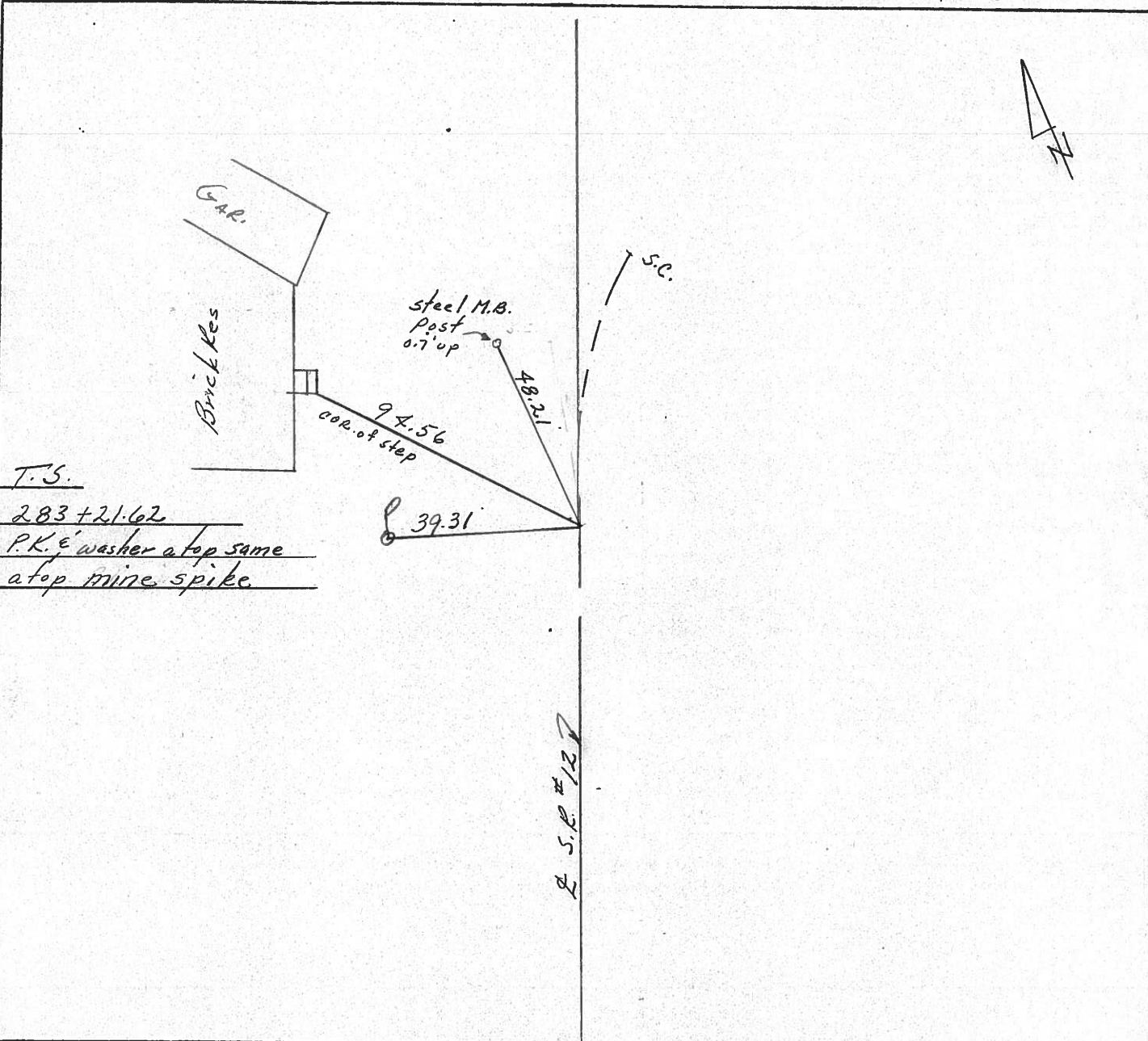
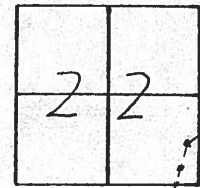
TYPE MONUMENT P.K.' washer

ON SURFACE - BELOW on surface

LEFT - € PAV'T. - RIGHT £ Pav't.

     TO      EDGE PAVEMENT

S.L.M.     



PERSONNEL	TITLE	PERSONNEL	TITLE
		COUNTY <u>Seneca</u>	DATE <u>10-16-72</u>
		S. R. <u>12</u>	WEATHER <u>Co 6/</u>
		SEC. <u>22 Jackson Twp.</u>	TEMP. <u>40°</u>
DESCRIPTION	<u>Fostoria to Sandusky Co. Line</u>		JOB NO.
	LEFT	CENTER LINE	RIGHT

