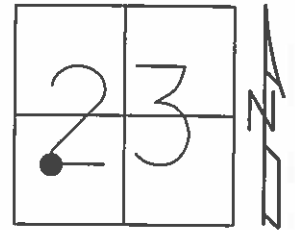


O.D.O.T. DISTRICT 2 SURVEY OFFICE (USE ONLY)

PERSONNEL _____ REFERENCE NO. 18 SHEET 20 OF 70
 NOTES HUSS DATE 05-21-12 ROUTE SR 12
 H.C. HUSS WEATHER FAIR COUNTY SENECA
 R.C. CANTERBURY TEMP. 84° TOWNSHIP JACKSON
 _____ SECTION 23
 _____ T 3 N R 13 E

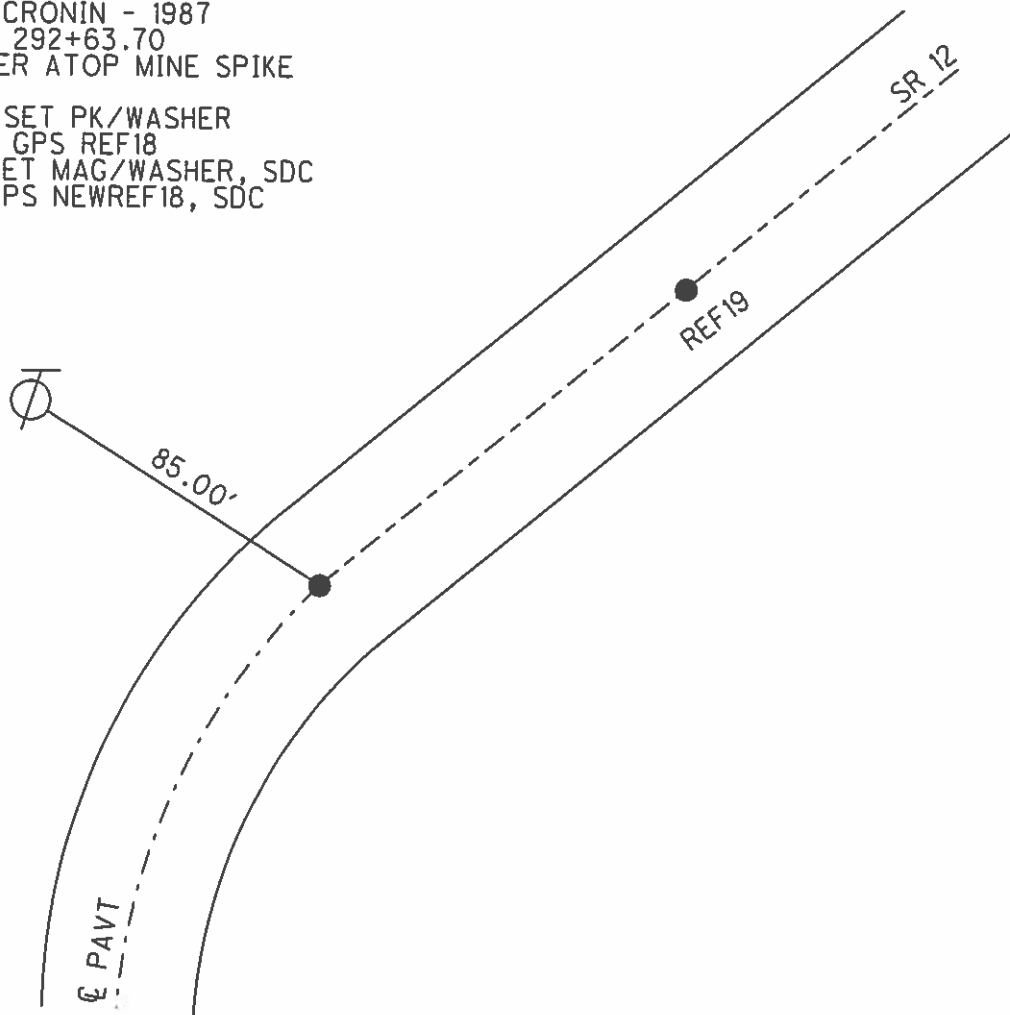
TYPE MONUMENT _____ PK/WASHER _____
 ON SURFACE - BELOW _____ ON _____
 LEFT - ϕ PAV'T - RIGHT _____ 0.3'
12.5' TO RT EDGE PAVEMENT
 S.L.M. _____ 308+57



GRID: NORTHING: 559566.230 EASTING: 1736636.419

PROJECT STA 308+57
 FD PK/WASHER 2" DEEP
 RECORD: CRONIN - 1987
 C.S. STA 292+63.70
 PK/WASHER ATOP MINE SPIKE

10-14-99 SET PK/WASHER
 06-04-12 GPS REF18
 11-15-12 SET MAG/WASHER, SDC
 11-15-12 GPS NEWREF18, SDC



O.D.O.T. DISTRICT 2 SURVEY OFFICE

PERSONNEL

REFERENCE NO. 18619

SHEET 14 OF 52

NOTES LOEHRKE

H.C. VAN DUSEN

R.C. ROUSOS

DATE 8-17-99

WEATHER FAIR

TEMP. +84°

ROUTE S.R. 12

COUNTY Seneca

TOWNSHIP Jackson

SECTION 23

T3 N R 13 E

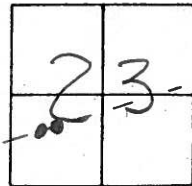
TYPE MONUMENT P.K./washer

ON SURFACE - BELOW 2"

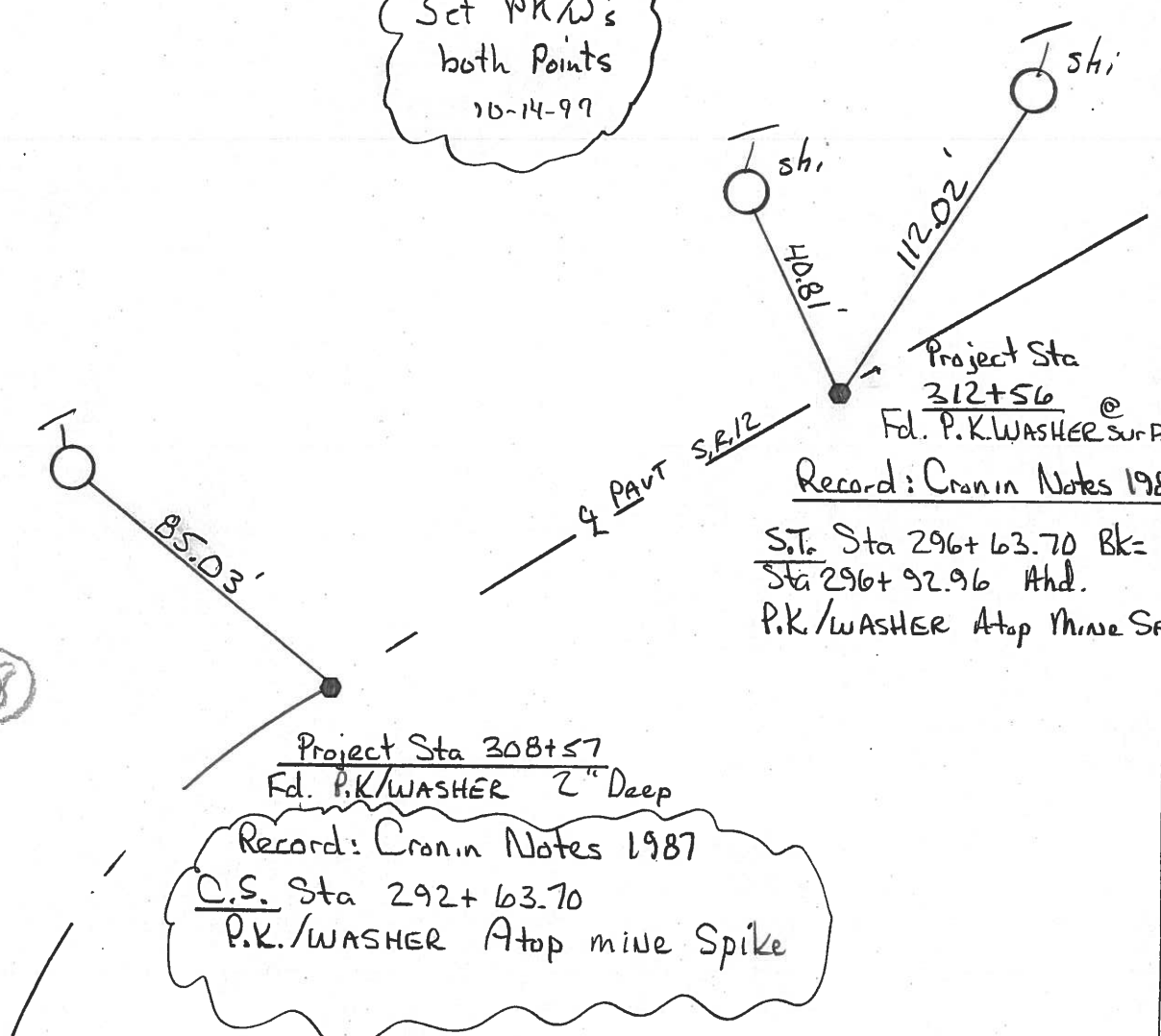
LEFT- & PAV'T. - RIGHT 0.3

12.5 TO RT EDGE PAVEMENT

S.L.M. 308+57 & 312+56



Set P.K.'s
both points
10-14-99



(18)

Project Sta
312+56
Fd. P.K./WASHER SURF
Record: Cronin Notes 1987
S.T. Sta 296+63.70 Bk=
Sta 296+92.96 Ahd.
P.K./WASHER Atop Mine Spk.

Record: Cronin Notes 1987
C.S. Sta 292+63.70
P.K./WASHER Atop mine Spike

O.D.O.T. DISTRICT 2 SURVEY OFFICE

PERSONNEL

NOTES Cronin
H.C. Ripple
R.C. Geyman
Barbour

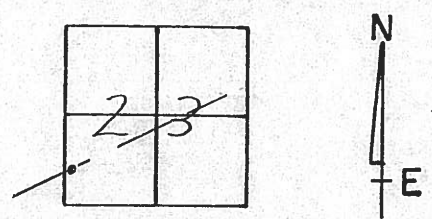
REFERENCE NO. 18

DRAWN - 1/27/87
DATE 5/06/87
WEATHER sunny
TEMP. 55°

SHEET 17 OF

ROUTE #12
COUNTY Seneca
TOWNSHIP Jackson
SECTION 23
T 3 N R 13 E

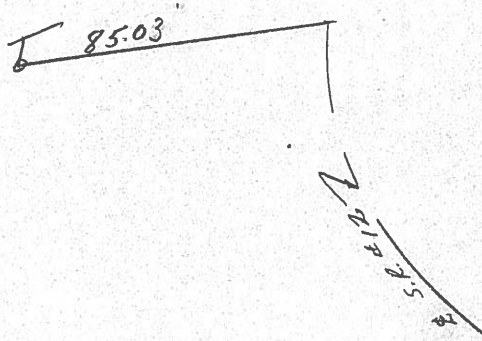
TYPE MONUMENT P.K. & washer
ON SURFACE - BELOW below surface
LEFT - ¢ PAV'T. - RIGHT E Pav't.
TO EDGE PAVEMENT
S.L.M.



C.S.

292 + 63.70

P.K. & washer atop
mine spike below surface



PERSONNEL TITLE PERSONNEL TITLE

COUNTY Seneca DATE 10-16-72

S. R. 12 WEATHER cool

SEC. 23 Jackson Twp. TEMP. 40°

DESCRIPTION Fostoria to Sandusky Co. Line JOB NO.

LEFT

CENTER LINE

RIGHT

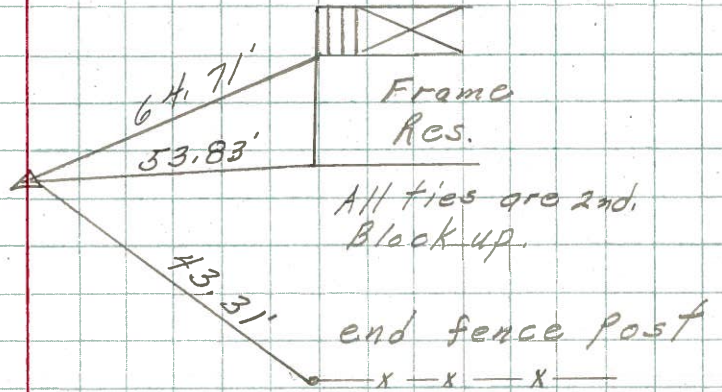
P.I.

305 + 95.40

small R.R. spk.

$\Delta = 0^{\circ} 07' \text{ Rt.}$

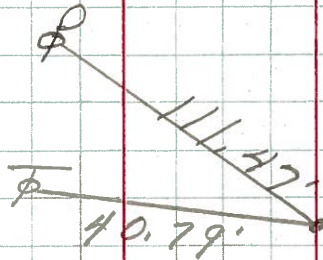
20



S.T.

296 + 63.70 Bk. =

296 + 92.96 Ahd.



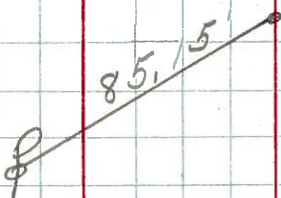
19



C.S.

292 + 63.70

small R.R. spk.



only one tie

18

PERSONNEL TITLE PERSONNEL TITLE

COUNTY Seneca DATE

S. R. 12-113 WEATHER

SEC. _____ TEMP. _____

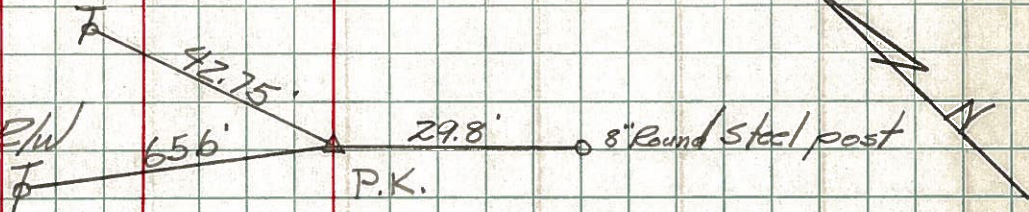
DESCRIPTION LEFT CENTER LINE RIGHT JOB NO.

Sta. 171+26.99

P.T.

Iron pin on $\frac{1}{2}$ of R/W

#426

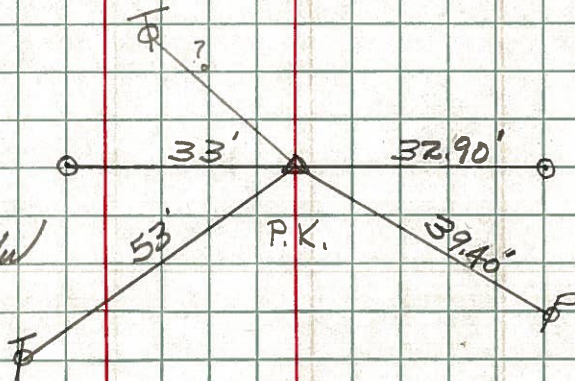


Sta. 199+93.44

P.C.

Iron pin on $\frac{1}{2}$ of R/W

#427



Sta. 202+25.31

P.I.

Iron pin on $\frac{1}{2}$ of R/W

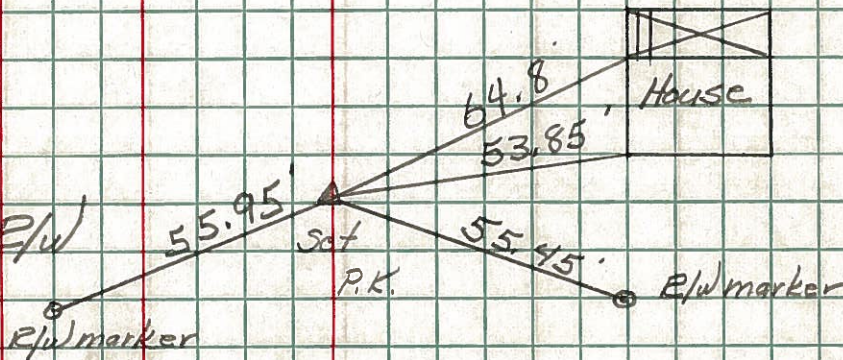
#428



Sta. 216+96

Iron pin on $\frac{1}{2}$ of R/W

#429



Sta. 226+96

Iron pin on $\frac{1}{2}$ of R/W

#430

