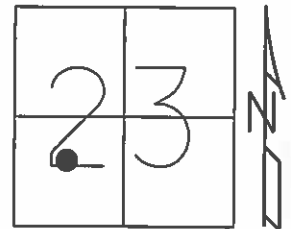


O.D.O.T. DISTRICT 2 SURVEY OFFICE (USE ONLY)

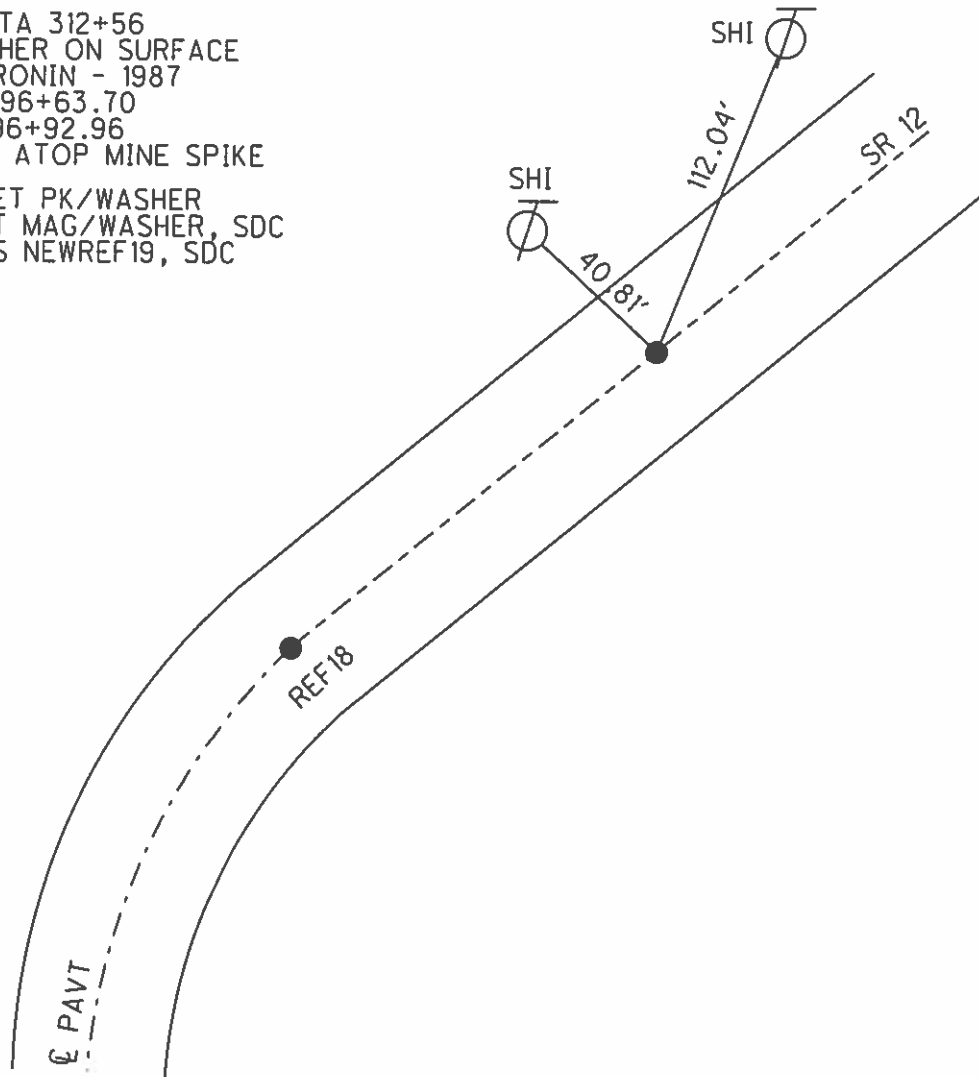
PERSONNEL	REFERENCE NO.	<u>19</u>	SHEET	<u>21</u>	OF	<u>70</u>
NOTES	DATE	<u>05-21-12</u>	ROUTE	<u>SR 12</u>		
H.C.	WEATHER	<u>FAIR</u>	COUNTY	<u>SENECA</u>		
R.C.	TEMP.	<u>84°</u>	TOWNSHIP	<u>JACKSON</u>		
			SECTION	<u>23</u>		
			T	<u>3</u>	N	R
				<u>13</u>		<u>E</u>

TYPE MONUMENT _____ PK/WASHER _____
 ON SURFACE - BELOW _____ ON _____
 LEFT - Q PAV'T - RIGHT _____ 0.3'
12.5' TO RT EDGE PAVEMENT
 S.L.M. _____ 312+56

GRID: NORTHING: 559764.828 EASTING: 1736983.382



PROJECT STA 312+56
 FD PK/WASHER ON SURFACE
 RECORD: CRONIN - 1987
 C.S. STA 296+63.70
 BK= STA 296+92.96
 PK/WASHER ATOP MINE SPIKE
 10-14-99 SET PK/WASHER
 11-15-12 SET MAG/WASHER, SDC
 11-15-12 GPS NEWREF19, SDC



O.D.O.T. DISTRICT 2 SURVEY OFFICE

PERSONNEL

REFERENCE NO. 18619

SHEET 14 OF 52

NOTES LOEHRKE

H.C. VAN DUSEN

R.C. ROUSOS

DATE 8-17-99

WEATHER FAIR

TEMP. +84°

ROUTE S.R. 12

COUNTY Seneca

TOWNSHIP Jackson

SECTION 23

T3 N R 13 E

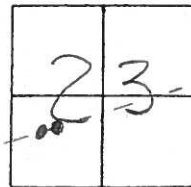
TYPE MONUMENT P.K./washer

ON SURFACE - BELOW 2"

LEFT- & PAV'T. - RIGHT 0.3

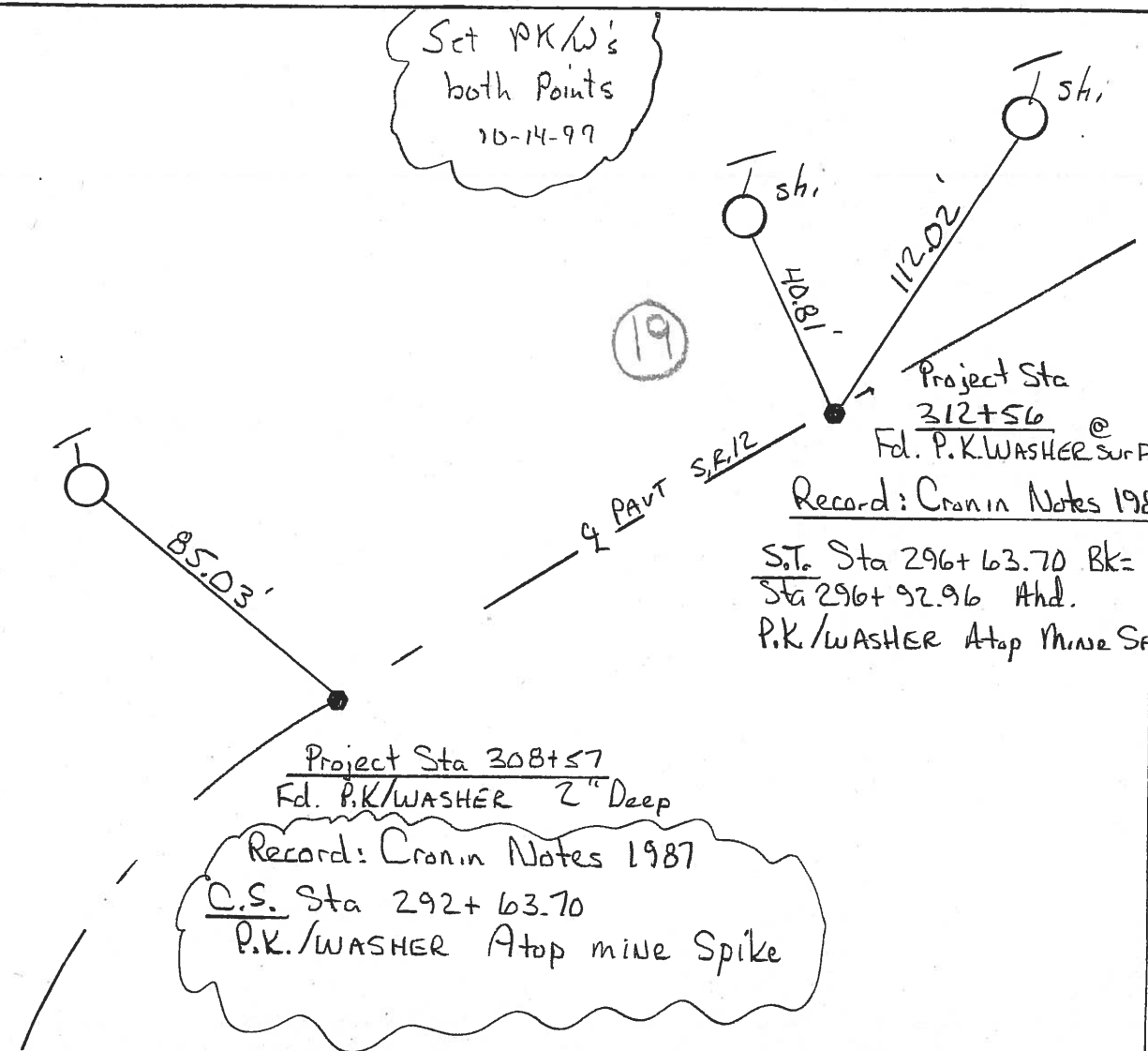
12.5 TO RT EDGE PAVEMENT

S.L.M. 308+57 & 312+56



Set PK/W's
both points
10-14-99

19



Project Sta
312+56
Fd. P.K./WASHER SURF

Record: Cronin Notes 1987

S.T. Sta 296+63.70 Bk=
Sta 296+92.96 Ahd.
P.K./WASHER Atop Mine Spk.

Project Sta 308+57
Fd. P.K./WASHER 2" Deep

Record: Cronin Notes 1987
C.S. Sta 292+63.70
P.K./WASHER Atop mine Spike

O.D.O.T. DISTRICT 2 SURVEY OFFICE

PERSONNEL

NOTES Cronin

H.C. Ripple

R.C. Geyman

Barbour

REFERENCE NO. 19

DRAWN 1/27/87

DATE 5/06/87

WEATHER sunny

TEMP. 55°

SHEET 18 OF

ROUTE #12

COUNTY Seneca

TOWNSHIP Jackson

SECTION 23

T 3 N R 13 E

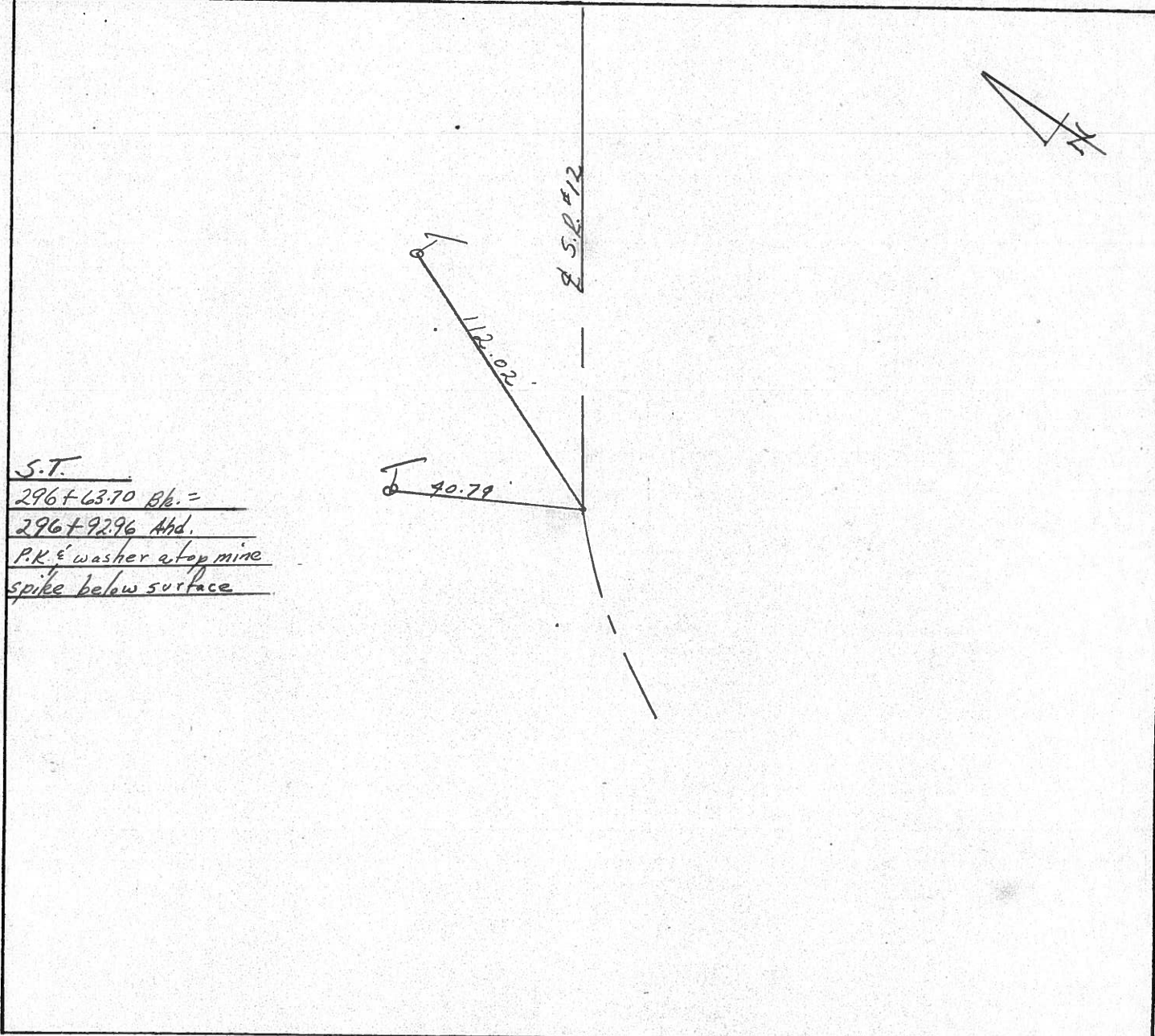
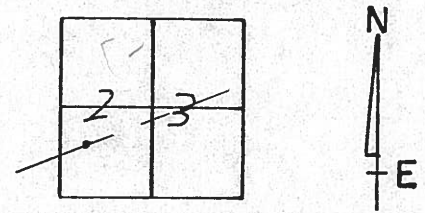
TYPE MONUMENT P.K. & washer

ON SURFACE - BELOW on surface

LEFT - ☉ PAV'T. - RIGHT & Pavt.

 TO EDGE PAVEMENT

S.L.M.



PERSONNEL TITLE PERSONNEL TITLE

COUNTY Seneca DATE 10-16-72

S. R. 12 WEATHER cool

SEC. 23 Jackson Twp. TEMP. 40°

DESCRIPTION Fostoria to Sandusky Co. Line JOB NO. _____

LEFT CENTER LINE RIGHT

<p>P.I. 305 + 95.40 small R.R. spk. $\Delta = 0^{\circ} 07' \text{ Rt.}$</p>	<p>(20)</p>		
<p>S.T. 296 + 63.70 Bk. = 296 + 92.96 Ahd.</p>	<p>(19)</p>		
<p>C.S. 292 + 63.70 small R.R. spk.</p>	<p>(18)</p>		<p>only one tie</p>